

PAPÍ PAPA — HORIZON



Судостроитель: HORIZON

Год постройки: 2016

Модель: Моторная яхта

Цена: **ЦЕНА ЯХТЫ ПО ЗАПРОСУ**

Местонахождение: United States

Длина общая: 122' 0" (37.19m)

Ширина: 26' 2" (7.98m)

Мин. осадка: 6' 8" (2.03m)

Крейс. скорость: 12 Kts. (14 MPH)

Макс. скорость: 18 Kts. (21 MPH)

Купить **Papí Papa — HORIZON** а также выбрать подходящую вам яхту из нашего каталога яхт вам поможет опытный яхтенный брокер Андрей Шестаков. На сегодняшний день компания **Shestakov Yacht Sales Inc.** имеет большое количество яхт в собственном списке продаж, а также тесно сотрудничает со всеми крупными яхтенными производителями по всему миру.

Для того чтобы купить яхту **Papí Papa — HORIZON** а также проконсультироваться по любому вопросу связанному с покупкой, продажей, чартером яхт позвоните по телефону **+7(918)465-66-44**.

ОГЛАВЛЕНИЕ

ОГЛАВЛЕНИЕ	2
ХАРАКТЕРИСТИКИ	7
Основная информация	7
Размеры	7
Скорость, вместимость и масса	7
Размещение	8
Корпус и палуба	8
Информация о двигателе	8
ПОДРОБНОЕ ОПИСАНИЕ	9
Quick Specs	9
Specifications	9
Forward and aft deck	9
Flybridge & Boat Deck	11
Engine Room & Propulsion details	12
Mechanical Systems	13
Electrical Systems	14
Interior design & equipment	15
Salon & Dining Room	15
Galley	16
Master Stateroom	17
Twin guest stateroom (2)	17
VIP Stateroom (2)	17
Crew Quarters	18
Crew Mess	18
Captains Cabin	18
Utility Room	19
PilotHouse	19
Electronics in PilotHouse	19

2018 Upgrades	20
Broker Remarks	20
Исключения	21
Отказ от ответственности	21
ФОТОГРАФИИ	22
Exterior Profile	22
Exterior Profile	22
Exterior Profile	22
Exterior Profile	22
Exterior Aerial	22
Exterior Profile	22
GA	23
Exterior Aerial	23
Salon	23
Salon	23
Formal Dining	23
Formal Dining / Salon	23
Day Head	24
Galley	24
Galley	24
Galley	24
Galley Sub Zero's	25
Pilothouse	25
Pilothouse	25
Pilothouse	25
Pilothouse	25
Flybridge	25
Flybridge	26
Flybridge	26

Flybridge	26
Flybridge	26
Flybridge Helm	26
Flybridge Helm	26
Flybridge	27
Flybridge	27
Flybridge	27
Bow Seating	27
Bow Seating	27
Bow Seating	27
Full Walk Around	28
Aft Deck Seating	28
Aft Deck Seating	28
Aft Deck Seating	28
Master Stateroom	28
Master Stateroom	28
Master Stateroom	29
Master Stateroom	29
Master Head	29
Master Stateroom	29
Master Head	30
Master Head	30
Master Head	30
Master Head	30
Port VIP Guest Stateroom	30
Port VIP Guest Stateroom	30
Port VIP Guest Stateroom	31
Port VIP Guest Stateroom	31
Port VIP Guest Head	31

Starboard VIP Guest Stateroom	31
Starboard VIP Guest Stateroom	31
Starboard VIP Guest Stateroom	31
Starboard VIP Guest Head	32
Port Guest Twin	32
Port Guest Twin Head	32
Starboard Guest Twin	32
Starboard Guest Twin Head	33
Starboard Guest Twin	33
Starboard Guest Twin Head	33
Garage / Beach Club	33
Garage / Beach Club	34
Garage / Beach Club	34
Crew Mess	34
Crew Mess	34
Captains Cabin	35
Captains Cabin	35
Crew Head	35
Twin Crew Bunk	35
Twin Crew Bunk	36
Crew Washer / Dryer	36
Wet Head in Garage	36
Engine Room	36
Engine Room	37
Engine Room	37
Engine Room	37
Engine Room	37
КОНТАКТЫ	38
Контактная информация	38

Телефоны	38
Время работы	38
Адрес	38

ХАРАКТЕРИСТИКИ

Основная информация

Тип судна: Моторная яхта

Модельный год: 2017

Год постройки: 2016

Страна: United States

Открытая палуба мостика: Да

Размеры

Длина общая: 122' 0" (37.19m)

Длина по ватерлинии: 103' 6" (31.55m)

Ширина: 26' 2" (7.98m)

Мин. осадка: 6' 8" (2.03m)

Скорость, вместимость и масса

Крейс. скорость: 12 Kts. (14 MPH)

Крейсерская скорость поворота: 1500 Kts.

Дальность на крейсерской скорости: 2100

Макс. скорость: 18 Kts. (21 MPH)

Макс. скорость поворота: 2325 Kts.

Дальность на макс. скорости: 720 Kts.

Водоизмещение: 357159 Pounds

Вместимость воды: 800 Gallons

Вместимость сточного бака: 320 Gallons

Объем топливного бака: 8000 Gallons

Размещение

Всего кают: 5

Спальные места: 10

Всего ком. состава: 9

Каюта капитана: Да

Каюты экипажа: 3

Койки экипажа: 5

Спальных мест экипажа: 5

Комм. состав экипажа: 2

Корпус и палуба

Материал корпуса: Fiberglass

Комплектация корпуса: Semi-Displacement

Дизайнер корпуса: In House

Дизайнер экстерьера: JC Espinosa

Дизайнер интерьера: Luca Dini

Информация о двигателе

Двигатели: 2

Производитель: CAT

Модель: C32

ПОДРОБНОЕ ОПИСАНИЕ

Quick Specs

Five en suite stateroom layout + crew Raised pilothouse helm + FB helm Tender garage + hydraulic swim platform ABT Zero Speed Stabilizers Bow/stern thrusters, 65HP Hydraulic Steelhead ES1500 davit on FB Headhunter sanitary treatment system Reverso fuel polishing system Boening monitoring & control system Atlas shorepower 75kW converter 208V/120V three phase electric, 60 Hz

Specifications

White gelcoat finish for hull above water line, exterior decks and furniture One piece hull cored lamination w/deep skeg and longitudinal girders Hull, deck & superstructure are built using VARTM for improved strength & less weight Fiberglass solid hull bottom High density foam cored hull sides, decks & superstructure Stringers with high density foam coring Interior structural components all properly bonded to hull Strong collision bulkhead structure for extra safety International anti-fouling bottom paint w/antiosmosis treatment BV Certificates (Stability and structure)

Forward and aft deck

High bulwark w/flush mounted courtesy lights

Fiberglass rub rail w/ S/S cap along hull side & swim platform

Heavy-duty S/S 2" handrail w/ 1-1/4" stanchions

Prewired for LED boat name on stern & 2 sides

(3) Hosemaster hose reels: FD 35', foredeck 100' & stern garage 100'

Nonskid foredeck

Large U-shaped settee & foredeck sunbathing cushion w/drink holders

Morton Marine umbrella for fwd seating

Bow teak step with cushion; extra shower head in FRP cabinet beneath step

(1) Pair of Fusion speakers fwd area

(2) Maxwell VWC6000 hydraulic windlasses w/

local plug in control, foot switches & remote (hidden windlass design)

(2) Maxwell electric rope winches on fwd deck

(2) 150kg S/S anchors w/ S/S protection plate

400' High tensile 1/2" anchor chains (2) w/chain stopper & tensioner

(2) Extra chain counters

Freshwater/sea water anchor chain manual washdown system Heavy-duty 316 S/S cleats and fairlead w/rollers on fwd & aft deck

2-foot swim platform extension at stern

(4) Bulwark doors at foredeck & aft deck for boarding

Deckhouse entrance doors (2) at galley and foyer

(4) Larger windows for VIP & Guest staterooms

(10) Large port lights

CE approved S/S portholes w/ storm covers for staterooms

Frameless windows, clear tempered laminated

Low-E glass for windshield & side windows

Teak aft deck, teak swim platform & teak steps to swim platform

Aft deck FRP settee w/Hi-Lo teak dining table (sliding)

Samsung 40" LED TV

(2) Pairs of Fusion speakers aft deck

Besenzoni hydraulic passerelle

Watertight door at the entrance to the utility room/garage from the swim platform

Teak hydraulic hi-lo swim platform w/1750 lbs

(800kg) load capacity & stairways to aft deck

Built-in shower with hot/cold water above swim platform

Besenzoni hydraulic swim ladder

2" Removable S/S rails around swim platform at stern

(2) Maxwell VC3500 electric rope winches w/rope roller on aft deck

Hawser holes on transom port & starboard sides

(2) Aft deck corner fairleads

Tender Garage w/hydraulic garage door

Besenzoni boat track system in garage Tender with tracks and rollers

Flybridge & Boat Deck

Teak on entire FB deck

Air conditioning on flybridge

S/S Rail with groove as lower track for EZ2CY

Oversize drains w/strainers on each deck corner

w/internal overboard drains, all w/check valves & vent holes

Acrylic glass for flybridge windscreens

Radar arch w/antenna bracket, (2) search

lights on either side of radar arch & Buell

Quadraplex air horn

(2) Flood lights illuminating flybridge aft deck, flush mounted in hard top & (2) flood lights

illuminating radar arch/mast

Removable hand rails w/acrylic panels around boat deck & stairway rails

Custom helm station w/carbon fiber dashboard

panel w/ZF Mather controls, compass & steering wheel

Custom bar w/sink, icemaker & fridge; adjacent storage area

Footrest around bar & (2) round stools for bar counter

(2) FRP settees & sliding teak tables per layout

(5) Person Jacuzzi with heater

FRP cabinet with Propane BBQ w/manual lift up function & extra deck wash faucet

FRP cover with sunpad above flybridge Jacuzzi

Hi-Lo SunBrite 46" LED TV in aft cabinet

(4) Pairs of Fusion speakers

(2) Life rafts

Engine Room & Propulsion details

Twin CAT C32A 1900 HP diesel engines w/ reduction gears - 675 Hours Platinum CAT Warranty until 12/21

Live SAE-C PTO on gear boxes for thrusters/ windlass & stabilizer power

SAE-A PTO on engines for hydraulic steering gear

ZF Mathers fixed engine control system in PH & FB - (1) handheld remote control plug-in receptacles on aft deck & FB

SS Aquamet HS 22# shafts

Spur line cutters for shafts

Spare rudder seals on the rudder shafts

High performance S-Class (5) blade propellers in NiA1Br

Main bronze struts w/backing plates

Shaft and rudder packing glands w/Tides Marine dripless seals

Underwater exhaust system

S/S rudder w/zinc plates

ABT hydraulic 16" variable speed bow & stern thrusters, 65 HP

ABT Zero speed stabilizers 440/20x

Reversible AC intake blowers (2) w/automatic speed control

Engine room ventilation openings (4) w/Delta T moisture eliminators

Double sound & heat insulated material w/foam & lead combination

Heavy-duty watertight engine room door;

watertight bulkheads fwd & aft

Air compressor

Vacuum cleaner system w/outlets throughout

Mechanical Systems

Reverso Nauafp 600 fuel polishing system

Dive compressor Bauer Junior II

Emergency shut-off fuel valve w/remote control

ISO grade fuel hose through entire system

Dual Racor 79/1000MA fuel filters/water

separator for each engine

(2) Racor 500MA fuel filters, one on each generator

Electric fuel transfer pump + one manual

emergency spare pump

Oil change pump system for engines & gens

Marine grade fuel tanks, total 8,000 gal in ER & fiberglass tank under bilge

FRP water tanks, total 800 gal w/electric level gauge

(3) Torrid 30 gallon water heaters w/circulation pump system

Instant hot water system

High-volume AC fresh water pressure pump &

(1) DC pump for back up

UV sterilizer for watermaker

(3) Charcoal filters plumbed into fresh water line

- fresh water pump, shore water inlet & galley

Marine Air chilled water, central AC compressor units w/soft start & reversible cycle heat (4)

function; air handler units w/individual controllers throughout boat

Back up sea water cooling pump & back up air conditioning circulation pump

320 Gallon holding tanks w/Y-Valve for holding tanks dockside pump out

Collecting sump tanks w/auto switch pumps for each shower & washer drainage area

Headhunter sanitary treatment system, fresh pump & toilet system

Grey water pump out dockside

Fire pump w/outlets and hydrants

Fire insulation in engine room

Fire resistant treatment for pipe penetrations

Fixed fire extinguisher FM200 or equivalent for engine room with remote pull station

Automatic shutdown system

Hand held fire extinguishers as required

Integrated fire alarm system in pilothouse w/ detectors in each cabin

Electrical Systems

Boeing monitoring and control system

Electrolysis bonding & grounding system

Atlas shore power 75kW converter (upgraded with seamless transfer)

AC Electrical system: 208V/120V 3 phase(4) wires, 60 Hz

(2) Glendinning 100 amp shorepower

cablemasters w/ 75' power cable

(2) Shorepower receptacles, 100 amp

Shorepower connection w/total 65KVA isolation transformer

Emergency power package & lighting system

GFI protection for all outlets in exterior, heads, galley & ER

Independent 24 volt to 12 volt converters for necessary equipment

(1) DC12 Volt receptacle

(2) Zinc anodes on transom

KVH TracVision HD7 and (2) M9 domes

(10) Underwater lights

(2) Stern docking lights

Extra camera on flybridge

Hubbell shore TV & telephone sockets

Wave WiFi booster system w/wireless routers onboard

Vimar internet outlet/socket

Panasonic PBX telephones w/intercom features in salon, pilothouse, master, VIP, guest rooms & crew mess; remaining cabins w/telephone outlet

AC/DC Main Power

(2) Kohler generators 65kW w/sound shield - 1800 Hours

(4) 255Ah Starting batteries for main engines & gens

(10) 210Ah AGM batteries for ship's DC 24V service power

(2) 210Ah emergency batteries above main deck w/independent battery charger Vapor proof battery switch Charles battery chargers for engine start & service Outback inverter power

Interior design & equipment

Custom Luca Dini interior design

Five en suite guest staterooms: on-deck Master

with four guest staterooms below deck + crew quarters aft

Dayhead on main deck per layout

Marble counter top, backsplash and floors in all guest heads

Salon & Dining Room

Electric curved salon entrance door

Dayhead on port side

Storage & TV cabinets w/adequate venting

L-shaped sofa with custom coffee table, chair & stools

Electric blinds

Custom-designed bar (stbd) w/marble top, storage, fridge & icemaker

Samsung 65" LED TV

Bose Lifestyle home theater with speakers

Samsung Blu-Ray Disc player

Apple TV

Storage cabinets on port & stbd

Custom dining table + chairs

Custom marble dining wall w/ (2) electric sliding doors to galley & hallway

Galley

Corian galley counter top and splash back

Cabinets & overhead locker per layout

Marble floors in galley

Full set of tableware + cookware for 12 guests

(2) SubZero galley refrigerators + (1) large capacity freezer

Miele range and oven

Miele microwave

Miele dishwasher with S/S trim kit

S/S Double sink per layout

Broan trash compactor

Kitchen Aid garbage disposal

SubZero wine cooler

Miele coffee machine

Master Stateroom

Bed size 80" x 76" Atlantic King size

Large walk-in closet

Port side desk w/stool; stbd storage per layout

TV located behind mirrored door

Electric blinds for windows including fixed skylight

En suite head with dual sinks, shower, Jacuzzi,
water closet and dual hanging lockers

(1) Pair Fusion speakers in head

Samsung 48" LED TV

Bose Lifestyle home theater w/ iPod dock & Bose speakers

Samsung Blu-Ray disc player

Apple TV

Twin guest stateroom (2)

(2) Single twin beds with drawers under

Double-door hanging lockers

Desk with chair

En suite head with shower, sink & toilet

Samsung 32" LED TV

(1) Pair of Fusion speakers

Samsung Blu-Ray disc player

Fusion w/Bluetooth DVD stereo (stbd guest only)

VIP Stateroom (2)

Queen size bed w/ drawers under

Vanity w/ stool

Large closet space

En suite head with sink, shower & separate water closet

Samsung 40" LED TV

Bose Lifestyle home theater

Bose soundbar, subwoofer & sound touch

wireless adapter

Samsung Blu-Ray disc player

Apple TV

Crew Quarters

Captain's cabin w/ bed & hanging lockers; ensuite head w/shower, sink & water closet

(2) Twin bunk rooms w/hanging locker

Head with sink, shower and toilet (shared b/n bunk rooms)

Stacked washer/dryer

Crew mess with L-shaped dinette, fridge/freezer, storage, microwave, & cooktop

Fusion w/Bluetooth DVD stereo

Pair of Fusion speakers

Crew Mess

Samsung 32" LED TV

Fusion w/Bluetooth DVD stereo

Pair of Fusion speakers

Captains Cabin

Samsung 24" LED TV

Fusion w/Bluetooth DVD stereo

Pair of Fusion speakers

Utility Room

S/S working counter top w/drawers under

Single deep S/S sink with faucet

Drained & ventilated wet locker

Storage lockers per layout

Dayhead per layout

PilotHouse

Integrated instrument panel on helm station w/ carbon fiber dashboard panel

Integrated general alarm & monitoring system for impt equip. (bilge pumps, blowers, nav lights)

International LED navigation lights

Ritchie magnetic compass for pilothouse & FB stations

Heavy-duty Speich S/S wipers & washer system, w/variable speed control

L-shaped leather settee w/ teak sliding table

Desk with storage & one chair

Surveillance camera for aft deck & ER

Upgrade to electric Besenzoni pilotchair P216

Pair of Fusion speakers

Electronics in PilotHouse

Raymarine navigation system, includes:

Raymarine Raystar GPS

Raymarine 48" 12kW 72nm open array and 72"

12kW 72nm open array radar system

(4) Raymarine 19" and (2) 15.4" multifunction displays

Raymarine fish finder and transducer

Raymarine autopilot system

Raymarine wind/depth/speed/temp transducers

Raymarine VHF with second station mic and built-in loudhailer

Raymarine AIS

2018 Upgrades

- Sub zero's in Galley
- Miele stacked washer and dryer in crew and guest
- Air conditioning in engine room
- (2) 2100 Gal per day spot zero water makers
- Upgraded Davit 3,000 lbs.
- 350 gallon p/ day ice maker added in beach club
- Teak freshly sanded
- Exterior compounded, waxed, and bottom painted
- All running gears serviced
- All flybridge cabinets refinished
- Noble tech navigation computer added to electronic / nav package
- Tow package
- V cool on all windows
- New custom leather sofa in salon
- Upgraded bunk covers in all staterooms
- Upgraded dining chairs (10)

Broker Remarks

This 2017 Horizon RP120 features a sleek exterior profile from U.S. designer JC Espinosa built atop Horizon's proven low resistance hull platform, which ensures superior seakeeping and comfort when under way. Famed Italian interior designer Luca Dini created a contemporary and elegant interior atmosphere; while there is a strong European influence. This Horizon RP120 also emphasizes comfort and usability. Her 26' 2" beam provides a functional five en suite guest stateroom layout— including an on-deck master—plus crew quarters aft of the engines. She includes numerous areas for entertaining and lounging found throughout, including foredeck seating and sunbathing areas, a spacious aft deck, and a flybridge deck level that provides an immense area for al fresco entertaining and relaxing. With a 6' 8" draft, Papi Papa is suited for

extended cruises, where her tender garage and hydraulic swim platform will provide hours of fun and relaxation. A truly comfortable, elegant, and sea-going luxury yacht, this Horizon RP120 will allow for you to cruise in luxury and comfort wherever your journey takes you!

Исключения

При продаже яхты исключаются личные вещи владельца.

Отказ от ответственности

Компания предоставляет описание судна или яхты добросовестно, но не может гарантировать точность этой информации, а также не ручается за техническое состояние. Покупатель должен проинструктировать своих агентов или оценщиков исследовать представленную информацию более подробно, по собственному желанию. Продажа судна или яхты, изменение цены или снятие с продажи будет происходить без предварительного уведомления.

ФОТОГРАФИИ

Exterior Profile



Exterior Profile



Exterior Profile



Exterior Profile



Exterior Profile



Exterior Aerial



GA

Exterior Aerial



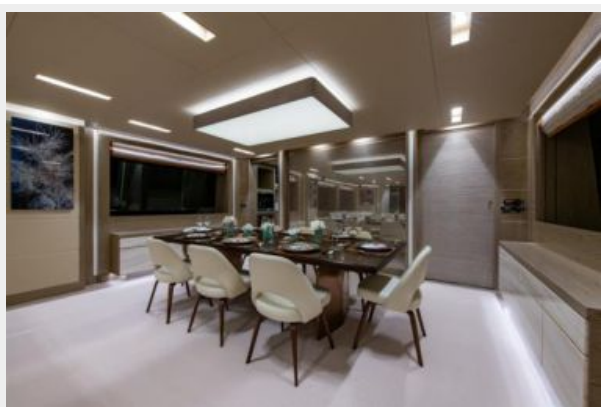
Salon



Salon



Formal Dining



Formal Dining / Salon



Day Head



Galley



Galley



Galley



Galley Sub Zero's



Pilothouse



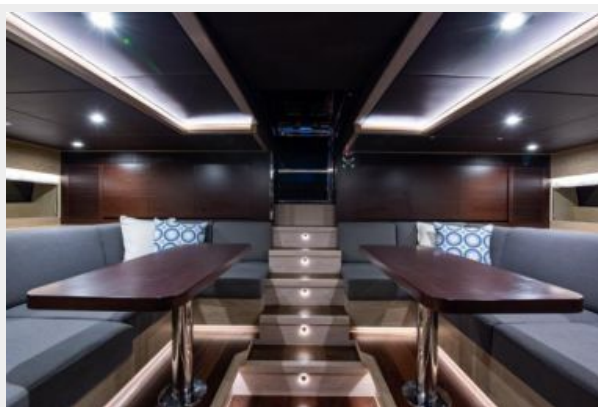
Pilothouse



Pilothouse



Pilothouse



Flybridge



Flybridge



Flybridge



Flybridge



Flybridge



Flybridge Helm



Flybridge Helm



Flybridge



Flybridge



Flybridge



Bow Seating



Bow Seating



Bow Seating



Full Walk Around



Aft Deck Seating



Aft Deck Seating



Aft Deck Seating



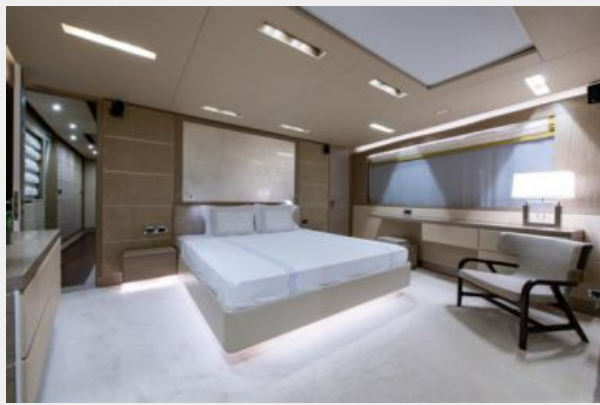
Master Stateroom



Master Stateroom



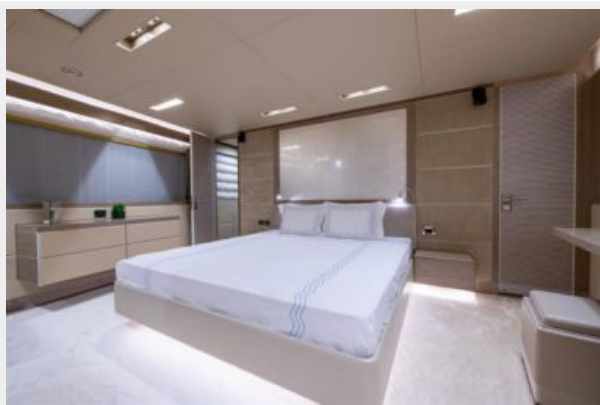
Master Stateroom



Master Stateroom



Master Stateroom



Master Head



Master Head



Master Head



Master Head



Master Head



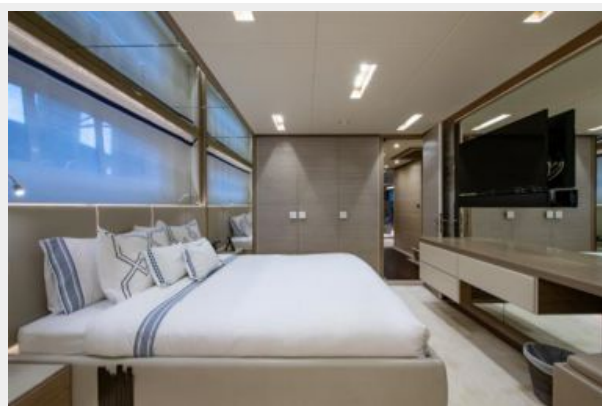
Port VIP Guest Stateroom



Port VIP Guest Stateroom



Port VIP Guest Stateroom



Port VIP Guest Stateroom



Port VIP Guest Head



Starboard VIP Guest Stateroom



Starboard VIP Guest Stateroom



Starboard VIP Guest Stateroom



Starboard VIP Guest Head



Port Guest Twin



Port Guest Twin Head



Starboard Guest Twin



Starboard Guest Twin



Starboard Guest Twin Head



Starboard Guest Twin Head



Garage / Beach Club



Garage / Beach Club



Garage / Beach Club



Crew Mess



Crew Mess



Captains Cabin



Captains Cabin



Crew Head



Twin Crew Bunk



Twin Crew Bunk



Crew Washer / Dryer



Wet Head in Garage



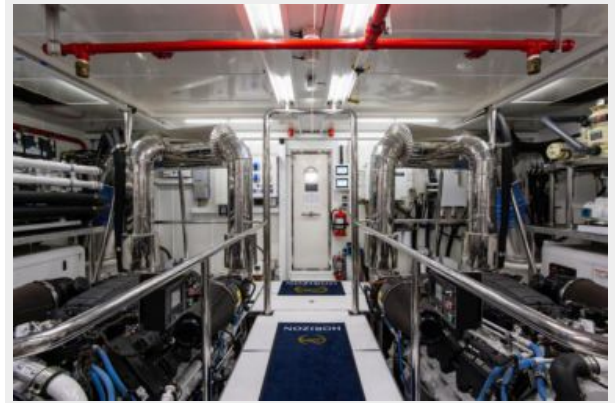
Engine Room



Engine Room



Engine Room



Engine Room



Engine Room



КОНТАКТЫ

Андрей Шестаков (Andrey Shestakov) – ведущий яхтенный брокер отдела продаж яхт и судов компании Shestakov Yacht Sales Inc. Официальный представитель Shestakov Yacht Sales Inc. для русскоговорящих клиентов в центральном офисе компании в Майами/Форт Лодердейл/Флорида/США.

Контактная информация

Email: andrey@shestakovyachtsales.com

Web: shestakovyachtsales.com

Телефоны

Краснодарский край: **+7(918)465-66-44**

США, Майами, Флорида: **+1(954)274-4435**

Время работы

Понедельник – Суббота: **9:00 - 21:00**
EDT

Воскресенье: **Закрето**

Адрес



Harbour Towne Marina, 850 NE 3rd St,
STE 213, Dania, FL 33004