

## SUNSEEKER 63 — SUNSEEKER



**Судостроитель:** [SUNSEEKER](#)

**Год постройки:** 2013

**Модель:** Моторная яхта

**Цена:** ЦЕНА ЯХТЫ ПО ЗАПРОСУ

**Местонахождение:** United States

**Длина общая:** 63' 0" (19.20m)

**Ширина:** 16' 0" (4.88m)

**Макс. осадка:** 5' 3" (1.60m)

**Крейс. скорость:** 23 Kts. (26 MPH)

**Макс. скорость:** 33 Kts. (38 MPH)

Купить Sunseeker 63 — SUNSEEKER а также выбрать подходящую вам яхту из нашего каталога яхт вам поможет опытный яхтенный брокер Андрей Шестаков. На сегодняшний день компания Shestakov Yacht Sales Inc. имеет большое количество яхт в собственном списке продаж, а также тесно сотрудничает со всеми крупными яхтенными производителями по всему миру.

Для того чтобы купить яхту Sunseeker 63 — SUNSEEKER а также проконсультироваться по любому вопросу связанному с покупкой, продажей, чартером яхт позвоните по телефону **+7(918)465-66-44**.

# ОГЛАВЛЕНИЕ

---

ОГЛАВЛЕНИЕ	2
ХАРАКТЕРИСТИКИ	4
Обзор	4
Основная информация	4
Размеры	4
Скорость, вместимость и масса	4
Размещение	5
Корпус и палуба	5
Информация о двигателе	5
ПОДРОБНОЕ ОПИСАНИЕ	6
Overview	6
Accommodations	6
Galley	7
Deck	7
Electronics	7
Engines	8
Safety	8
Updates	8
Remarks	8
Exclusions	8
Disclaimer	9
Исключения	9
Отказ от ответственности	9
ФОТОГРАФИИ	10
КОНТАКТЫ	23
Контактная информация	23
Телефоны	23
Время работы	23

---

Адрес

23

# ХАРАКТЕРИСТИКИ

## Обзор

**TRADES CONSIDERED! Just Listed! Excellent deal on a meticulously clean flybridge Sunseeker. USA Built, one Owner vessel!**

- Williams Jet Tender
- Volvo IPS with SkyHook
- HD SAT dome
- Hydraulic Swim Platform
- Water Maker
- 4 Guest Cabins Plus 2 Crew
- and much more...

## Основная информация

**Тип судна:** Моторная яхта

**Модельный год:** 2013

**Год постройки:** 2013

**Страна:** United States

## Размеры

**Длина общая:** 63' 0" (19.20m)

**Ширина:** 16' 0" (4.88m)

**Макс. осадка:** 5' 3" (1.60m)

## Скорость, вместимость и масса

**Крейс. скорость:** 23 Kts. (26 MPH)

**Макс. скорость:** 33 Kts. (38 MPH)

**Вместимость воды:** 218 Gallons

**Объем топливного бака:** 792 Gallons

## Размещение

---

**Всего кают:** 4

**Всего ком. состава:** 3

**Спальных мест экипажа:** 2

## Корпус и палуба

---

**Материал корпуса:** Fiberglass

## Информация о двигателе

---

**Двигатели:** 2

**Производитель:** Volvo

**Модель:** Penta IPS 1200

**Тип двигателя:** Inboard

**Тип топлива:** Diesel

# ПОДРОБНОЕ ОПИСАНИЕ

---

## Overview

---

Built and delivered in late 2013, this Sunseeker 63 is a one owner yacht from new, maintained daily to a meticulous standard.

She boasts **extremely low hours**, IPS Pod drives for responsiveness, performance and exceptional maneuverability, plus Volvo's Dynamic Positioning System. She features an extensive list of additions which include a 'one-of-a-kind' custom stainless steel hydraulic powered Bimini top. A completely customized sound system allows you to switch zones between salon, aft deck or fly bridge. Her OCEAN LED underwater lights add to the evenings fish sightings. With the added security system, you will sleep peacefully knowing your Captain will be notified of anyone coming onboard.

She Features Custom Royal Pedic mattresses as well as custom linens and bedding for the ultimate in comfort. High Definition Satellite Dish Network TV keeps you informed or entertained. A Williams 385TJ jet tender sits on her hydraulic swim platform ready to zip you to those remote beaches. The spacious flybridge is equipped with a wet bar offering a BBQ, ice maker and drink refrigerator making for another great entertaining area.

Finished with a stunning blue hull, sleek lines and a graceful profile, this Sunseeker 63 combines modern luxury with ultimate performance that is ideal for entertaining and extended cruising with family and guests. She is extremely versatile and is in impeccable condition.

The Sunseeker 63 is currently available for inspection in Fort Lauderdale, FL.

## Accommodations

---

Starting from her hydraulic lowering swim platform, she has teak sole stairways to each side to the main deck cockpit. The cockpit and stairways have a teak plank sole, as do the stairway leading up the starboard side of aft deck to fly bridge.

Walking up to the fly bridge also has teak plank sole. When you arrive on the fly bridge there is an island on its starboard side aft of the helm with icemaker, drink cooler, sink with hot/cold tap and electric barbecue under protective lid (an additional receptacle was added for a blender). Forward of the island to starboard is the helm with helmsman and companion pedestal seats with lifting knee bolsters. To port of the helm are double wide sun pad cushions with adjustable back supports. Aft of sun pad is bench seating along port coamings. Aft of forward port side bench seat is U shaped aft bench seating around an adjustable pedestal table. Storage areas beneath all bench seating provided.

The aft deck has an adjustable, folding teak table with a forward facing cushioned seat. Extra seating is nearby with four additional teak folding directors chairs. The sole is teak and sliding

glass doors give access to the main cabin. Teak steps lead up to side decks. The side decks have safety railings running their perimeter to bow.

The bow has a large sun pad with back supports amidships, anchor lockers and anchor pulpit with windlass. Large forward facing and side windows provide excellent lighting for salon and visibility for pilothouse helm station. The cabin is accessed either through aft cockpit sliding doors or the starboard side pilothouse door. On the transom is a lifting door starboard to access the crew's stateroom, which has a double berth and its own head with shower wand and head. There are also accommodations for 2 crew.

The transom also has a large trunk storage area with lifting hatch amidships. There is a shower wand on the starboard stairway and swinging gates to both stairways from swim platform.

The main cabin has its entertainment center to starboard side aft. There is a leather couch along starboard side and U shaped leather couch along port side. There is a queen berth and head with separate shower enclosure, mirrored vanity and storage areas beneath sinks. Cabinets provide storage for bar glasses and other items. Forward is the VIP stateroom with Queen berth in V-berth and it's own head and shower. Two more stairs down lead to the companionway, which has a port bunk cabin and a starboard cabin with two singles. A head is to starboard side and services both of these cabins.

Bench seating is provided for dinette table. Forward of dinette is helm with helmsman and companion 24V powered pedestal chairs with foot rests. The galley is to port side with teak sole, U shaped island granite counters, storage drawers and pantries, stovetop, microwave and stainless steel sink. Forward of galley to port side are teak steps leading to accommodation areas. The Main electrical panel is above steps and there is a freezer below steps lead to companionway.

---

## Galley

---

- Eurokera Stove/Cooktop
- Miele Integrated Slimline G1262 SCVI

---

## Deck

---

- 90 Metres of Galvanised 9.5mm anchor chain
- Hydraulic Swimming Platform
- Marine Electric BBQ Grill
- Tender Williams Jet 385TJ

---

## Electronics

---

- Raymarine Ray 240 VHF, Upper & Lower Helm
- Furuno Navnet 3D's GPS/Radar, 2 Screens Upper Helm & 2 Screens Lower Helm
- 2 x Autopilot Simrad AP28
- Volvo Dynamic Positioning System Upper & Lower Helms (upgraded)
- Raymarine ST60(Digital) Depth Sounder
- 6" Richie Compass at Upper & Lower Helms

## Engines

---

- Generator Cummins Onan Model: 21.5 MDK BR5185E (1,084 hours)
- Shore Power 50 amp single
- Tropical Marine Air A/C
- Village Marine Water Makers
- SidePower Bow Thruster
- Glendinning Cablemaster
- TrimTabs: 24v twin, hydraulic tabs

## Safety

---

Searchlights: Sanshin Twin Beam dual station control

## Updates

---

- All lights updated with LED's
- Larger capacity water heater installed

## Remarks

---

- Built for USA standards @ 60Hz
- Custom made stainless steel hydraulic powered Bimini top by pipe welders
- Dish network HD TV
- Custom sound system, inside and out
- Under water lights
- Hydraulic lowering platform
- Water maker
- All custom Royal Pedic mattresses incl crew

## Exclusions

---

Owners Personal Effects

---



---

## Disclaimer

---

The Company offers the details of this vessel in good faith but cannot guarantee or warrant the accuracy of this information nor warrant the condition of the vessel. A buyer should instruct his agents, or his surveyors, to investigate such details as the buyer desires validated. This vessel is offered subject to prior sale, price change, or withdrawal without notice.

---

## Исключения

---

При продаже яхты исключаются личные вещи владельца.

---

## Отказ от ответственности

---

Компания предоставляет описание судна или яхты добросовестно, но не может гарантировать точность этой информации, а также не ручается за техническое состояние. Покупатель должен проинструктировать своих агентов или оценщиков исследовать представленную информацию более подробно, по собственному желанию. Продажа судна или яхты, изменение цены или снятие с продажи будет происходить без предварительного уведомления.

# ФОТОГРАФИИ

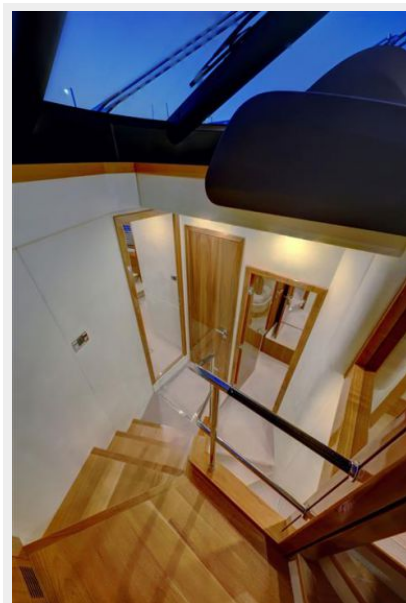


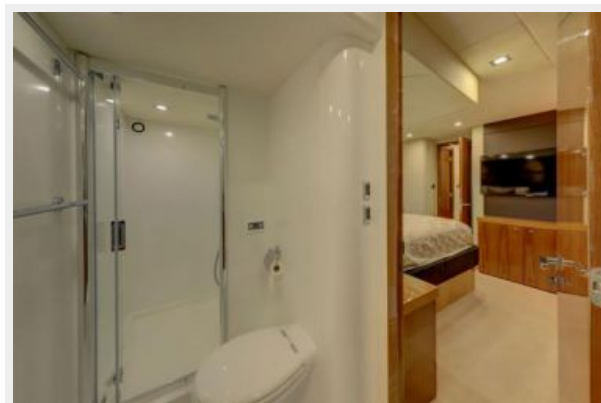




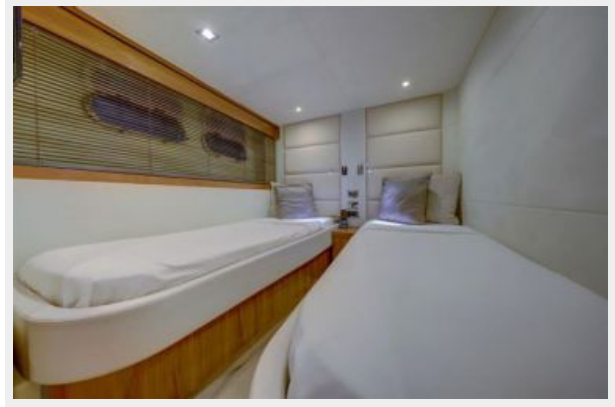






















# КОНТАКТЫ

---

Андрей Шестаков (Andrey Shestakov) – ведущий яхтенный брокер отдела продаж яхт и судов компании Shestakov Yacht Sales Inc. Официальный представитель Shestakov Yacht Sales Inc. для русскоговорящих клиентов в центральном офисе компании в Майами/Форт Лодердейл/Флорида/США.

## Контактная информация

---

Email: [andrey@shestakovyachtsales.com](mailto:andrey@shestakovyachtsales.com)

Web: [shestakovyachtsales.com](http://shestakovyachtsales.com)

## Телефоны

---

Краснодарский край: **+7(918)465-66-44**

США, Майами, Флорида: **+1(954)274-4435**

## Время работы

---

Понедельник – Суббота: **9:00 - 21:00**  
EDT

Воскресенье: **Закрито**

## Адрес

---



Harbour Towne Marina, 850 NE 3rd St,  
STE 213, Dania, FL 33004