

ZANTINO III — DENISON



Builder: DENISON

Year Built: 1986

Model: SHELBY

Price: PRICE ON APPLICATION

Location: United States

LOA: 106' 0" (32.31m)

Beam: 22' 8" (6.91m)

Min Draft: 6' 6" (1.98m)

Cruise Speed: 17 Kts. (20 MPH)

Max Speed: 22 Kts. (25 MPH)

Our experienced yacht broker, Andrey Shestakov, will help you choose and buy a yacht that best suits your needs **Zantino III — DENISON** from our catalogue. Presently, at Shestakov Yacht Sales Inc., we have a wide variety of yachts available on our sale's list. We also work in close contact with all the big yacht manufacturers from all over the world.

If you would like to buy a yacht **Zantino III — DENISON** or would like help answering any questions concerning purchasing, selling or chartering a yacht, please call **+1(954)274-4435**

TABLE OF CONTENTS

TABLE OF CONTENTS	2
SPECIFICATIONS	4
Overview	4
Basic Information	4
Dimensions	4
Speed, Capacities and Weight	5
Accommodations	5
Hull and Deck Information	5
Engine Information	5
DETAILED INFORMATION	6
Walk through and accomodations	6
Refits	6
Generator Room	7
Salon	7
Fly Bridge	7
Dining	8
Pilothouse	8
Galley	8
Crew Quarters	8
Foredeck	8
Master Stateroom	8
Exclusions	9
Exclusions	9
Disclaimer	9
PHOTOS	10
CONTACTS	15
Contact details	15
Telephones	15

Office hours	15
Address	15

SPECIFICATIONS

Overview

OWNER WANTS HER SOLD IN THE NEXT 2 MONTHS. 400k Price reduction!

With her timeless lines, her repowered main engines and replacement of her generators in 2011 this yacht performs Excellent. She sleeps comfortably 6 guests in 3 large cabins. Her Master stateroom has a California King bed with his and hers separate bathrooms. Her cruising is 16-17 knots @ 1950 RPM and 75% Load and a fuel consumption of 100 Gallons per hr on both engines with her Maximum speed: 20-21 knots @2300 RPM.

On December 2018 she went through her annual maintenance including cutlass bearings, zincs, prop reconditioning, shafts checks and complete alignment so the yacht would achieve her maximum rpm.

Other MAJOR REFITS where in 2007, 2010/11 (Year of Repowering and at the same time the yacht replaced the shaft logs and had a complete Paintjob) and 2016 took place at Rolly Marine Services.

Basic Information

Category: SHELBY

Sub Category: Raised Pilothouse

Model Year: 1986

Year Built: 1986

Refit Type: 2007/2011/2016: Repowering, interior, exterior, decks, running gear, shaft logs, exhausts, hydraulics

Country: United States

Registration #: 732810

Vessel Top: Bimini Top

Fly Bridge: Yes

Dimensions

LOA: 106' 0" (32.31m)

Beam: 22' 8" (6.91m)

Min Draft: 6' 6" (1.98m)

Clearance: 30' 0" (9.14m)

Speed, Capacities and Weight

Cruise Speed: 17 Kts. (20 MPH)

Cruise Speed RPM: 2000 Kts.

Cruise Speed Range: 1400

Max Speed: 22 Kts. (25 MPH)

Max Speed RPM: 2300 Kts.

Max Speed Range: 1300 Kts.

Gross Tonnage: 132 Pounds

Water Capacity: 900 Gallons

Holding Tank: 300 Gallons

Fuel Capacity: 8777 Gallons

Fuel Consumption: 100 Gallons

Accommodations

Total Cabins: 3

Total Berths: 6

Sleeps: 6

Total Heads: 5

Crew Cabin: 2

Crew Berths: 4

Crew Sleeps: 4

Crew Heads: 2

Hull and Deck Information

Hull Material: Aluminum

Deck Material: Teak over Aluminum

Hull Configuration: Semi-Displacement

Hull Finish: Aluminum

Engine Information

Engines: 2

Manufacturer: Caterpillar

Model: C 32

Engine Type: Inboard

Fuel Type: Diesel

DETAILED INFORMATION

Walk through and accomodations

The vessel is very spacious for her size. Entering from either the port or stbd side, you have the pilothouse forward and the two main salons aft. The aft salon has access to the side decks from two watertight doors to port and stbd. Continuing aft is the exterior aft deck. Via a spiral staircase located port side aft you can access the machinery/generator room and swim platform. Access to the generator and machinery room with actual emergency steering and AC units, is via a custom made watertight door with a view glass. Aft of the generator room is another watertight door from solid aluminum that gives you access to the swim platform. Moving back into the forward salon is a wide spiral staircase on the stbd side, leading to the three staterooms. Walking forward there is a Powder room with toilet and the pilothouse, which leads to the Flybridge. Continuing forward is the formal dining for 6 to 8 persons with a high gloss mahogany table, and custom cabinetry for storage of silverware, china and crystal settings. Via a swinging door, you enter the Galley and can continue forward to the crew quarters and Engine room. Zantino III has three (3) spacious staterooms, each with an en suite bathroom. These staterooms offer sleeping arrangements for 6 with a King berth, queen berth and twin berths. The master stateroom is extra spacious with King size bed and plenty of living space. There are his and her heads aft and to port and starboard. The stateroom can be easily split in two masters with each one having its own en suite bathroom. The nicely appointed VIP has a queen size bed with an en suite bathroom for privacy and convenience. This stateroom has a warm glow that is very inviting. The guest stateroom is located to starboard, and is the perfect spot for additional guests or kids with comfortable twin beds, all the comforts of home, and even an en suite bathroom.

Refits

2010 refit \$1M

2007 refit 400k

2016 150k

2010 Refit included: Engine repowering with Caterpillar C 32 Marine Engines 1400hp each Complete ZF marine transmissions service New Vulkan Couplers New paint throughout Fuel tanks recertification and repairs. Tanks have been tested at 3psi pressure by Hull Technologies of Fort Lauderdale Replacement of both shaft tunnels New Antifouling, New Zincs, New cutlass bearings Running gear complete service and balancing by High Seas Technologies. Shafts and propellers Replacement of Mercedes high hours 75kw generator, with Northern lights 80kw generator New exhausts Complete stabilizers service and rebuild as necessary. New Electronics New Audio/Visual including Satellite TVs Pilothouse reconditioning Crew quarters reconditioning New tile at guest bathrooms New underwater lights. Replacement of all necessary fuel, oil and water hoses throughout Major reconditioning of Engine Room and Lazarette

Room(pump/generator room)

2007 Refit included:Upgrading of Air Condition with new air handlers and chillers,Complete rebuild in all of her hydraulics.The electrical system has been also refitted completely by a Marine automation and electrical engineering company.Mechanical repairs included replacing or reconditioning of all pumps, bilge pumps.8 Delta T Systems fans in engine room and generator room in 2006.Fuel polishing system.New Groundfos water pumps with water filters assembly.Recondition of Crew quarters with new carpets and wall papers.Port generator new (John Deere) in 2005.New teak decks throughout 2007.The tender was replaced with 18 feet Tender Novurania.

Generator Room

- From the aft deck and a custom fabricated hatch you have access to a wide spiral staircase leading to the watertight door that seals the generator room. Entering and moving forward you will find two new A/C Chillers. Forward and to port you will find the two brand new self-prime water pumps with expansion tanks within the pumps. Also to port side is the John Deere genset with soft soundproof pads, the double raw water pumps and the 40gph watermaker.
- Custom made emergency steering also located in the center of the compartment - easily accessible.
- Stbd side fwd is one of the water heaters.
- The Northern lights 80kw generator with the bow thruster PTO pump is at the stbd side.
- In the same area are the main power units for capstans, davits and two electrical panels. Generator batteries and service batteries also located in this area.

Salon

The salon has a split configuration with the aft salon becoming private immediately with two doors. Two attractive couches in bright colors that foldout for additional overnight accommodations. Other features include an entertainment center, alternative seating spaces, Venetian blinds and decorative tables and home ware, as well as a small table with 4 upholstered parsons chairs appropriate for a card game or just a friendly gathering. The forward salon is a meeting and welcome area. Is also used as an office for the owners.

Fly Bridge

The fly bridge is a large area for entertainment with comfortable seating. Located at the center mast is a storage compartment and refrigerator. Navigation is simplified with two captain's chairs found at the helm. Aft of the seating area is the center storage for the Tender and chocks for double Jetskis. Outboard port and stbd of the Toys area are the two heavy duty hydraulic Cranes.

Dining

The Formal dining area is forward the pilothouse and aft of the galley. A Mahogany high gloss table with brightly upholstered parson's chairs seats 6-8 people. Custom cabinetry to stbd has an eye-catching granite top with 4 swinging cylindrical cabinets made out of stainless steel, as a base. Dining in this area can be as private as you and your guest would prefer.

Pilothouse

The electronics have been upgraded throughout the years; the most recent improvement is the installation of Satellite TV, Flat panel TV's throughout the vessel, wifi system, pilot house computer/plotter, etc in 2011. A complete alarm light panel with tank gauges for fuel, water and black water tanks is also found here. Other equipment includes Naiad stabilizer controls at both upper and lower stations, bow thruster controls, light switches and electrical panels. Under the helm station in the pilothouse is a large storage area with electronic equipment.

Galley

Equipment in the galley includes: New Sub Zero Double door stainless steel oversized combination refrigerator and freezer 2005, new dishwasher (2011), two additional smaller refrigerators, (2007) a separate icemaker (2005), microwave oven, New Jenn-Aire convection oven(2007), Jenn Aire extraction fan (2005), and a trash compactor.

Crew Quarters

This space is found via a staircase from the crew dinette and laundry area. Forward is the Captain's cabin with an oversized bed, en suite toilet and shower, and one extra bunk. Sleeping arrangements are for at least two crew within the Captain's cabin. Just aft of the staircase there is another Toilet/shower and the oversized door of the second crew cabin, with sleeping arrangements for two more crewmembers. TV's in each stateroom.

Foredeck

- Heavy-duty double anchor windlass by Ideal powered by A/C voltage with frequency drive, (upgraded from original) with center capstan for mooring and towing.
- Stockle anchors with in hull anchor guides and 300 feet of anchor chains.
- Foredeck guest seating includes comfortable seating and two sun beds one in each side of the bow.

Master Stateroom

The master stateroom is extra spacious with a California King size bed and plenty of living space. There are his and her heads aft and to port and starboard. The stateroom can be easily split in two masters with each one having its own en suite bathroom.

Exclusions

Owners personal effects

Art work and antique desks at main deck and Master stateroom

Exclusions

Owner's personal belongings.

Disclaimer

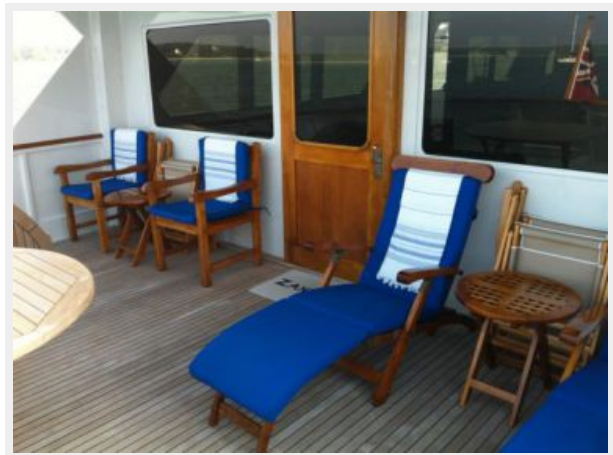
The Company offers the details of this vessel or yacht in good faith but cannot guarantee or warrant the accuracy of this information nor warrant the condition of the vessel. A buyer should instruct his representatives, agents, or his surveyors, to investigate such details as the buyer desires validated. This vessel or yacht is offered subject to prior sale, price change, or withdrawal without notice.

PHOTOS











CONTACTS

Andrey Shestakov, leading yacht broker of the sales department of Shestakov Yacht Sales Inc. Shestakov Yacht Sales Inc., the official representative of the Miami/Fort Lauderdale FL headquarters.

Contact details

Email: andrey@shestakovyachtsales.com

Web: shestakovyachtsales.com/en/

Telephones

USA: +1(954)274-4435

Office hours

Monday – Saturday: **9:00 - 21:00** EDT

Sunday: **closed**

Address



Harbour Towne Marina, 850 NE 3rd St,
STE 213, Dania, FL 33004