

SAVERY — ENDEAVOUR



Builder: ENDEAVOUR

Year Built: 1979

Model: Cruising Sailboat

Price: PRICE ON APPLICATION

Location: United States

LOA: 37' 0" (11.28m)

Beam: 11' 7" (3.53m)

Max Draft: 4' 6" (1.37m)

Our experienced yacht broker, Andrey Shestakov, will help you choose and buy a yacht that best suits your needs **Savery — ENDEAVOUR** from our catalogue. Presently, at Shestakov Yacht Sales Inc., we have a wide variety of yachts available on our sale's list. We also work in close contact with all the big yacht manufacturers from all over the world.

If you would like to buy a yacht **Savery — ENDEAVOUR** or would like help answering any questions concerning purchasing, selling or chartering a yacht, please call **+1(954)274-4435**

TABLE OF CONTENTS

TABLE OF CONTENTS	2
SPECIFICATIONS	3
Overview	3
Basic Information	3
Dimensions	3
Speed, Capacities and Weight	3
Accommodations	4
Hull and Deck Information	4
Engine Information	4
DETAILED INFORMATION	5
Accommodations & Layout	5
Galley	5
Sails & Rigging	6
Electronics & Navigation	6
Mechanical	6
Electrical	7
Deck & Hull	7
Exclusions	9
Disclaimer	9
Exclusions	9
Disclaimer	9
PHOTOS	10
CONTACTS	18
Contact details	18
Telephones	18
Office hours	18
Address	18

SPECIFICATIONS

Overview

- TURN KEY! New Arrival in Fort Pierce, Florida!
- Very nicely maintained and outfitted, desirable A Plan layout.
- Salon w/table and convertible berth in V plus 2 double berths aft.
- 4'6" draft, perfect for the Keys, Bahamas and beyond!
- Caribbean and Central America cruise ready with all flags, charts and guide books!
- Ready for the next owner!
- 2017 REBUILT 50hp Perkins 4-108 diesel engine, 62 hrs SMOH
- NEW 2017 Muir electric windlass
- NEW 2017 Achilles tender and 5hp Honda outboard
- Dinghy davits and outboard hoist
- 2006 New Mast and Standing Rigging
- Solar Panels
- C70 Chartplotter and Radar
- SSB
- extensive spares and much more

Basic Information

Category: Cruising Sailboat

Sub Category: Aft Cockpit

Model Year: 1979

Year Built: 1979

Country: United States

Dimensions

LOA: 37' 0" (11.28m)

LWL: 30' 0" (9.14m)

Beam: 11' 7" (3.53m)

Max Draft: 4' 6" (1.37m)

Speed, Capacities and Weight

Displacement: 20000 Pounds

Water Capacity: 100 Gallons

Holding Tank: 20 Gallons

Fuel Capacity: 55 Gallons

Accommodations

Total Cabins: 2

Sleeps: 5

Total Heads: 1

Hull and Deck Information

Hull Material: Fiberglass

Engine Information

Engines: 1

Manufacturer: Perkins

Model: 4-108

Engine Type: Inboard

Fuel Type: Diesel

DETAILED INFORMATION

Accommodations & Layout

- A Plan layout features an adaptable layout with configurations to have generous salon seating in V with a dining table that folds up against the mast, also converts to a very generous sleeping berth.
- Updated upholstered settee with 5" foam bottom cushions and memory foam top, new cushion covers 2016
- 6'3" headroom
- Curtains 2016
- Private double cabin aft to port
- double pilot berth to starboard
- Stand up nav table
- Single head w/shower, new countertop, sink, faucet 2017
- New manual toilet and sanitation hoses 2016
- Y valve, macerator and holding tank
- Galley mid ship
- Teak and holly sole, nicely varnished
- Teak interior cabinets and bulkheads
- (2) Large opening hatches (10) Opening ports, all re-bedded
- Bug screens for all ports and hatches
- (2) solar vents
- LED lights throughout the cabin

Galley

- Force 10 Gimballed 3 burner Propane stove/oven
- (3) Propane tanks
- Force 10 BBQ
- Solenoid shutoff switch
- Adler Barbour top loading refrigeration
- Double SS sink w/ new faucet
- Cutting board cover, serves dual purpose for stovetop and sink
- H & C Pressure water system
- Hot water heater 2016
- 100 gal water tank
- Good cabinet storage and provisioning space
- Deep bin storage
- Compass Rose dishes and silverware included

Sails & Rigging

- Fully battened Main , 3 reef points
- Harken Roller furler
- 135% UK Dacron Genoa w/white sacrificial cover (like new)
- Storm Jib
- Boom Vang preventer
- Spare halyard
- Keel stepped aluminum mast w/ single spreaders New 2006
- Standing rigging New 2006
- External chainplates
- (2) Lewmar #44 2 speed Self tailing winches on cockpit coamings
- (3) Lewmar #8 winches
- LED anchor light

Electronics & Navigation

- Raymarine C70 GPS, Chartplotter, Radar
- Raymarine ST6000 Autopilot
- New Windex 2018
- New Raymarine wind indicator 2018
- New Raymarine depth sounder
- Yaesu FT840 SSB
- Standard Horizon VHF new 2012
- Handheld VHF
- 6" Danforth Compass
- AM/FM w/ DVD
- 6 speakers inside, 2 cockpit speakers
- Epirb
- Weems and Plath barometer
- Trident clock

Mechanical

- 2017 Rebuild on Perkins 4-108 50 hp engine, 62 hrs SHO
- New Sea Water Strainer thru hull 2017
- reduction gear 2.57:1
- Freshwater cooled
- Racor fuel filter
- Dripless shaft seal
- 55 gal aluminum tank NEW 2007
- 1.25" SS shaft

- Upgraded Balmar 100amp alternator 2017
- Fuel polishing system
- spare parts, belts & filters inventory
- New heat exchanger 2014, pressure tested at rebuild 2017
- New raw water pump 2013, pressure teste at rebuild 2017
- Waterlift muffler
- Perko bronze strainer
- 2 bladed spare prop (LH17)
- 3 bladed 17" prop
- Edson steering
- Elk hide wrapped SS steering wheel
- Morse controls
- Emergency tiller
- ALL Bronze seacocks
- (2) 12vdc bilge pumps
- Manual bilge pump
- 12vdc shower sump pump
- New Hot water heater 2016
- New manual toilet and sanitation hoses 2016
- Y -valve, macerator 2010
- New bronze thru hull 2017
- New vanity sink, counter and faucet 2017
- Original Endeavour 37 manuals, engine manual and electronics manuals

Electrical

- 120VAC and 12vdc systems
- (4) 6vdc House batteries New 2016
- (1) Group 27 Start Battery New 2016
- Batteries relocated from interior compartment to stern lazarette
- Heart Interface Freedom 10, 50 amp charge/100 watt inverter
- Charles Industries 15 amp charger
- (2) Kyocera Solar panels, 235 total watts, mounted on davits
- Xantrex Controller/Regulator
- 12V and 110 V breaker panel
- Shore power cord

Deck & Hull

- NEW Muir Electric windlass 2017, cockpit and foot controls
- SS Double anchor roller
- Delta plow anchor 44# w 200' 3/8" chain and 150' rode

- Danforth 20H anchor w/40' chain and 140' rode
- Danforth 13S anchor w/rode
- Danforth lunch hook
- Mantus anchor bridle
- NEW Achilles Inflatable Dingy 2017
- NEW 5hp Honda 4 stroke Outboard 2017, 2.5 gal external tank
- SS Outboard motor davit
- SS St Croix Dingy Davits w/ Solar panel
- Dodger (2008) and Bimini (2010) with full eisenglass and screen enclosure
- Custom storage area for canvas when not installed
- Side gates
- SS bow and stern rails
- SS stanchions and double lifelines New 2008
- SS transom ladder
- Added H & C cockpit shower 2016
- Force 10 BBQ propane grill with 2018 valve, canvas cover
- 3 spacious cockpit lazarette lockers
- 2 propane lockers in cockpit coaming holds 2 10# aluminum tanks
- 1 rail mounted vertical propane tank 2017
- Docklines and fenders, spare lines
- Blue and tan cockpit cushions
- Sturdy bosun's seat w/ tool and parts pockets
- ACR Globalfix Epirb 2013
- Charts, Cruising Guides, Courtesy flags for Caribbean and Central America
- Lifesling
- 4 PFD's
- Flares
- Brinkman 12V Spotlight 2014
- Fire extinguishers
- Brass bell
- Portable horn
- Raised cabin top
- Teak handrails
- Deck painted and nonskid 2018
- Bottom stripped and barrier coated 2004
- Bottom paint 2016
- Teak caprails
- Teak rubrail with SS strake
- Canvas covers for almost everything
- Wide walkarounds
- Teak toerail
- All external teak freshly painted with Cetol October 2018

Exclusions

- Personal Tools and Fishing Gear
- (2) Honda generators
- TV

Disclaimer

The Company offers the details of this vessel in good faith but cannot guarantee or warrant the accuracy of this information nor warrant the condition of the vessel. A buyer should instruct his agents, or his surveyors, to investigate such details as the buyer desires validated. This vessel is offered subject to prior sale, price change, or withdrawal without notice.

Exclusions

Owner's personal belongings.

Disclaimer

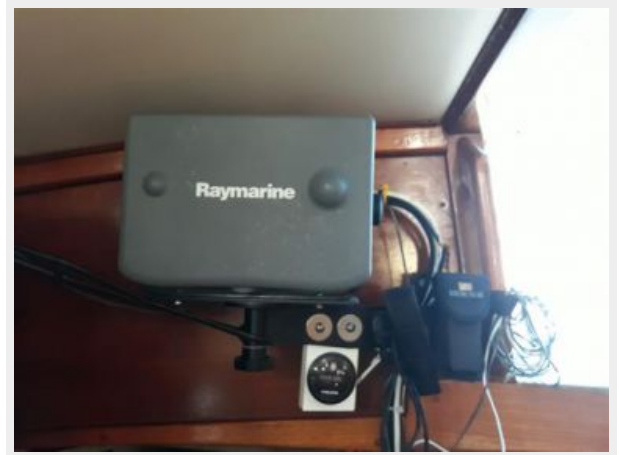
The Company offers the details of this vessel or yacht in good faith but cannot guarantee or warrant the accuracy of this information nor warrant the condition of the vessel. A buyer should instruct his representatives, agents, or his surveyors, to investigate such details as the buyer desires validated. This vessel or yacht is offered subject to prior sale, price change, or withdrawal without notice.

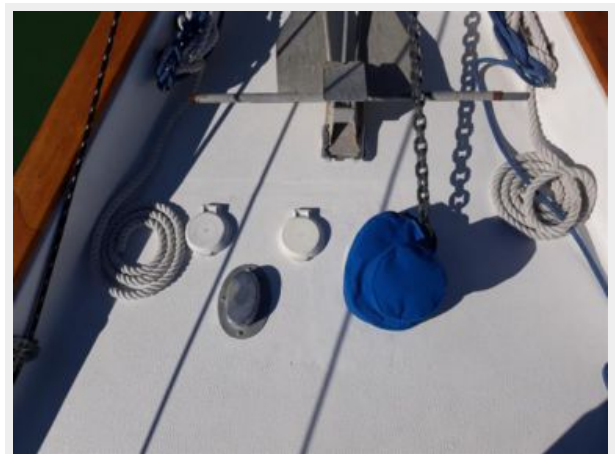
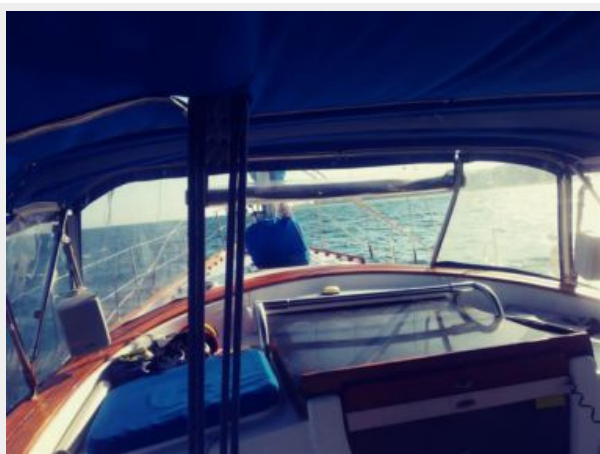
PHOTOS

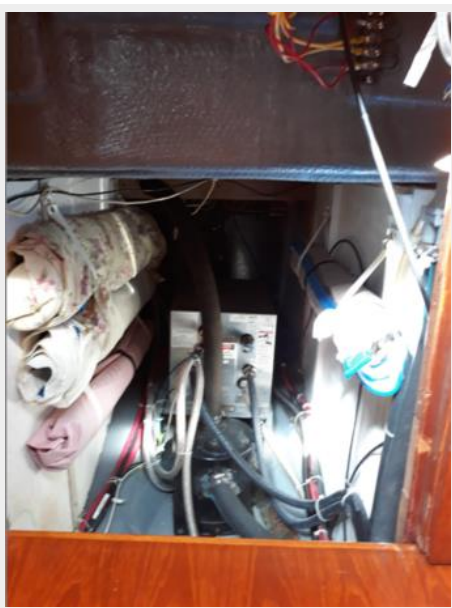
















CONTACTS

Andrey Shestakov, leading yacht broker of the sales department of Shestakov Yacht Sales Inc. Shestakov Yacht Sales Inc., the official representative of the Miami/Fort Lauderdale FL headquarters.

Contact details

Email: andrey@shestakovyachtsales.com

Web: shestakovyachtsales.com/en/

Telephones

USA: +1(954)274-4435

Office hours

Monday – Saturday: **9:00 - 21:00** EDT

Sunday: **closed**

Address



Harbour Towne Marina, 850 NE 3rd St,
STE 213, Dania, FL 33004