

## BIG P — SEA RAY



**Builder:** SEA RAY

**Year Built:** 2016

**Model:** Motor Yacht

**Price:** PRICE ON APPLICATION

**Location:** United States

**LOA:** 51' 0" (15.54m)

**Beam:** 15' 4" (4.67m)

**Max Draft:** 5' 5" (1.65m)

Our experienced yacht broker, Andrey Shestakov, will help you choose and buy a yacht that best suits your needs **BIG P — SEA RAY** from our catalogue. Presently, at Shestakov Yacht Sales Inc., we have a wide variety of yachts available on our sale's list. We also work in close contact with all the big yacht manufacturers from all over the world.

If you would like to buy a yacht **BIG P — SEA RAY** or would like help answering any questions concerning purchasing, selling or chartering a yacht, please call **+1(954)274-4435**

---

# TABLE OF CONTENTS

---

TABLE OF CONTENTS	2
SPECIFICATIONS	3
Basic Information	3
Dimensions	3
Speed, Capacities and Weight	3
Accommodations	3
Hull and Deck Information	3
Engine Information	4
DETAILED INFORMATION	5
Remarks	5
2016 Standard Equipment	5
Base & Options	5
Exclusions	6
Disclaimer	6
PHOTOS	7
CONTACTS	11
Contact details	11
Telephones	11
Office hours	11
Address	11

---

# SPECIFICATIONS

---

## Basic Information

---

**Category:** Motor Yacht

**Sub Category:** Flybridge

**Model Year:** 2016

**Year Built:** 2016

**Country:** United States

**Coast Guard #:** 1269247

**Fly Bridge:** Yes

## Dimensions

---

**LOA:** 51' 0" (15.54m)

**Beam:** 15' 4" (4.67m)

**Max Draft:** 5' 5" (1.65m)

## Speed, Capacities and Weight

---

**Displacement:** 46800 Pounds

**Water Capacity:** 130 Gallons

**Holding Tank:** 68 Gallons

**Fuel Capacity:** 500 Gallons

## Accommodations

---

**Total Cabins:** 3

**Total Heads:** 2

## Hull and Deck Information

---

**Hull Material:** Fiberglass

---

## Engine Information

---

**Engines:** 2

**Manufacturer:** Cummins

**Model:** ZEUS 600 QSC T3

**Fuel Type:** Diesel

## DETAILED INFORMATION

### Remarks

BIG P is a great example of a truly turn key 510 Sea Ray Flybridge. She is offered by her original owners who took delivery in 2016. Having only 143hrs on the clocks, she's been lightly cruised. ZEUS drives with joystick make her a breeze to maneuver. BIG P offers plenty of space and amenities for entertaining and accommodations for staying aboard in 3 staterooms. Many tasteful and functional custom items have recently been added including, new bedding in the staterooms, extended sofa backrests, flybridge Isinglass enclosures, upgraded to RayMarine GS125 displays with cameras etc. Hydraulic Marine lift swim platform, also, a set of unused spare propellers. Owners have found their next boat and are anxious for BIG P to find a new home. Preliminary listing here; additional listing details and high resolution photography coming soon.

### 2016 Standard Equipment

Bottom Paint Bow, Deck & Hand Rails, 316 Stainless Steel Cleats, Stainless Steel (8) Lights, Navigation Hatch, Deck Vent- Translucent w/ Locks & Sky Screen Cover Hull Windows, Smoked Acrylic Portlights (2, Opening) Swim Platform w/Concealed Stainless Steel Four-step Ladder w/ Integral Grab Handle Thru-Hull Fittings Stainless Steel Canvas (Sunbrella) Bridge Seats & Console Covers Cockpit Seat Covers Anchor, Galvanized Anchor Chute, Stainless Steel Anchor Rode/Chain w/ Foot Switch Anchor Washdown Spigot w/Hose Anchor Rope/Chain Storage w/ Gravity Assisted Hatches Beverage Holders Hatch, Bridge Access Bridge Lighting, Indirect LED Bridge Radar Arch

### Base & Options

White Hull Gelcoat Blue Canvas INT. PKG. A. Dark Cherry High Gloss INT. PKG. A. Light Carpet INT. PKG. A. Roman Shades PKG B Wood Flooring- Salon SS Finish for Sunroom Entry Way Door Door- Cabin Entry- Stainless Steel Interior Carpet Runners Master Strm- Opposing Seating Portlights, Opening -Each Stateroom Refrigerator/Freezer Upgrd Galley -Drawer Salon Ottoman Salon Sofa with Pull-out Bed Table Hi/Low - Salon Wine Cooler Cabin Audio Upgrd HK/Bose Spkr DSS Satellite TV System TV FS w/DVD & Gaming Port- Fwd Strm TV FS w/DVD & Gaming Port- Fwd Strm Macerator w/Seacock Interlock System Vacuum System, Central Washer/Dryer Combo Transformer Shore PWR ISO Boost Mesh Windshield Shade Canvas, Dash Cover Lower Helm (Blk Only) Sunbrella Cockpit & Bridge Fabric Upgrade Sun Pad w/ Drink Holders- Foredeck Aft Facing Bridge Camera Bridge Cover Canvas Grill & Sink on Bridge H-Top w/ Lighting/Sunroof/Retract Canvas Cockpit Icemaker n/a w/ Ckpt Refrigerator Cockpit Table Fiberglass Hydraulic Marine Lift Platform System Lighting, Underwater -Transom (4) Rod Holders- Cockpit Spotlight w/ Dual Halogen Bulbs (ACR) Table, High Gloss Teak -Cockpit Windshield w/ Manual Opening Side Window Lower Helm - Raymarine E125W- Aux Display Upper Helm- Raymarine E125W- Aux Display Stainless Steel Anchor Oil Exchange System

---

## Upgrade Lower Displays to GS125's Raymarine Network Interface Camera

---

### **Exclusions**

---

Owner's personal belongings.

---

### **Disclaimer**

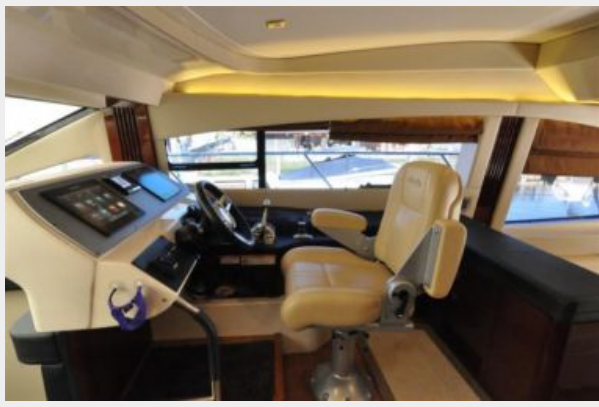
---

The Company offers the details of this vessel or yacht in good faith but cannot guarantee or warrant the accuracy of this information nor warrant the condition of the vessel. A buyer should instruct his representatives, agents, or his surveyors, to investigate such details as the buyer desires validated. This vessel or yacht is offered subject to prior sale, price change, or withdrawal without notice.

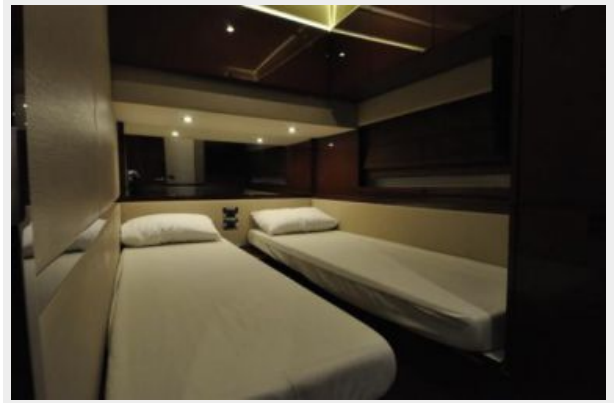
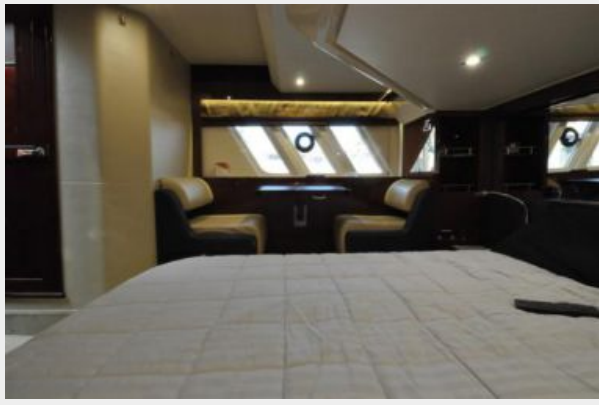
# PHOTOS













# CONTACTS

---

Andrey Shestakov, leading yacht broker of the sales department of Shestakov Yacht Sales Inc. Shestakov Yacht Sales Inc., the official representative of the Miami/Fort Lauderdale FL headquarters.

## Contact details

---

Email: [andrey@shestakovyachtsales.com](mailto:andrey@shestakovyachtsales.com)

Web: [shestakovyachtsales.com/en/](http://shestakovyachtsales.com/en/)

## Telephones

---

USA: +1(954)274-4435

## Office hours

---

Monday – Saturday: **9:00 - 21:00** EDT

Sunday: **closed**

## Address

---



Harbour Towne Marina, 850 NE 3rd St,  
STE 213, Dania, FL 33004