

## S/V SANCTUARY — SOVEREL YACHTS



**Builder:** SOVEREL YACHTS

**LOA:** 41' 0" (12.50m)

**Year Built:** 1982

**Model:** Cutter

**Price:** PRICE ON APPLICATION

**Location:** United States Virgin Islands

Our experienced yacht broker, Andrey Shestakov, will help you choose and buy a yacht that best suits your needs S/V Sanctuary — SOVEREL YACHTS from our catalogue. Presently, at Shestakov Yacht Sales Inc., we have a wide variety of yachts available on our sale's list. We also work in close contact with all the big yacht manufacturers from all over the world.

If you would like to buy a yacht S/V Sanctuary — SOVEREL YACHTS or would like help answering any questions concerning purchasing, selling or chartering a yacht, please call +1(954)274-4435

---

# TABLE OF CONTENTS

---

TABLE OF CONTENTS	2
SPECIFICATIONS	3
Overview	3
Basic Information	3
Dimensions	3
Accommodations	4
Hull and Deck Information	4
Engine Information	4
PHOTOS	5
CONTACTS	13
Contact details	13
Telephones	13
Office hours	13
Address	13

---

# SPECIFICATIONS

---

## Overview

---

**(LOCATION: Charlotte Amalie USVI) This Soverel 41 Cutter is a Bill Soverel designed blue water cruiser.** She is a rare find for those who appreciate the excellent design and fine build.

On deck we have a spacious cockpit with dodger, bimini, side curtains, and pedestal helm with wheel. Designed with a clean deck to insure optimum performance. She has an aluminum mast, stainless steel standing rigging, and stainless steel wire halyards. Auxiliary power is provided by a 1997 Yanmar diesel engine.

The spacious interior is ready overnight or extended getaways. The galley occupies the rear of the salon with facing settees forward with center drop leaf table. The galley is starboard with wood cabinets, solid surface counter, stainless steel sink. Opposite the galley is the nav station with chart table. There's a pilot berth aft of the nav station. Forward of the salon we have the enclosed head compartment, hanging locker, and forward stateroom with v-berth and under-berth storage. The roomy interior sleeps six with forward berth, settees, and pilot berth.

This Severol is ready for an owner with the appreciation of a fine cruiser that has been maintained by a knowledgeable owner. She is well equipped with: Raymarine Smartpilot autopilot, ICOM IC-M70 SSB radio, ICOM AT120 SSB tuner, Garmin 48 GPS, Garmin 12 handheld GPS, Standard Horizon Eclipse VHF radio, Furuno 1621 radar, Windex at masthead, Raymarine ST60+ depth sounder with speed and distance logs, 6" Ritchie Powerdamp bowl compass, 20" Sanyo television, Clarion CD/AM/FM (Sirius sat ready) stereo, Cabin and cockpit speakers, Sony DVD player, and barometer with 4" face. Call now to schedule a showing of this 41' cutter.

---

## Basic Information

---

**Category:** Cutter

**Sub Category:** Cruising Sailboat

**Model Year:** 1982

**Year Built:** 1982

**Country:** United States Virgin Islands

---

## Dimensions

---

**LOA:** 41' 0" (12.50m)

---

## Accommodations

---

**Total Cabins:** 1

**Total Heads:** 1

---

## Hull and Deck Information

---

**Hull Material:** Fiberglass

---

## Engine Information

---

**Engines:** 1

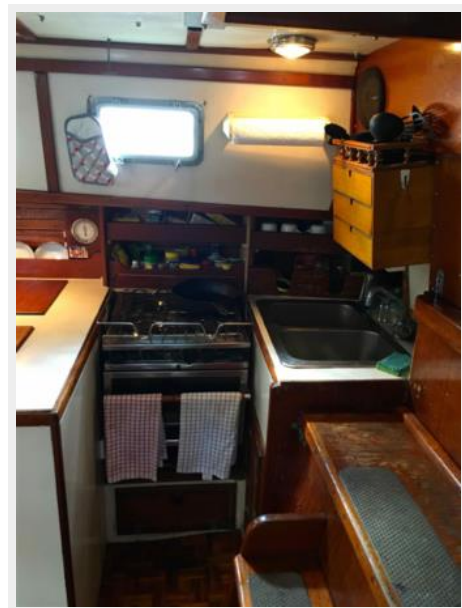
**Manufacturer:** Yanmar

**Engine Type:** Inboard

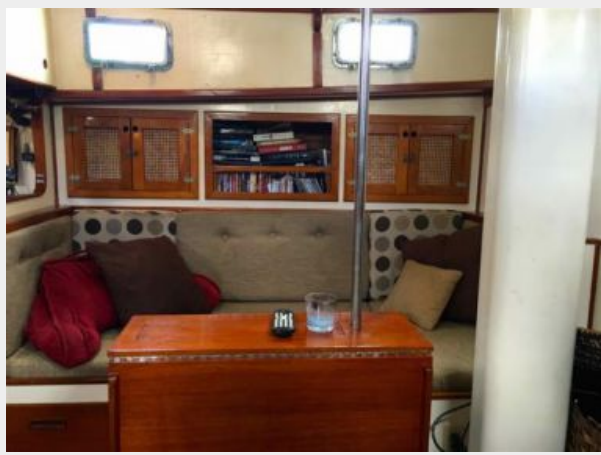
**Fuel Type:** Diesel

# PHOTOS



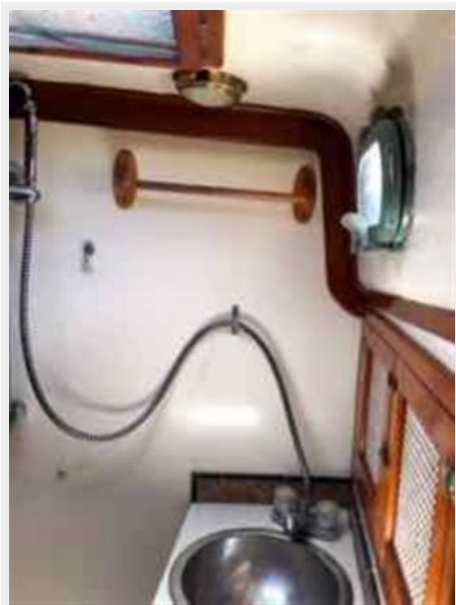




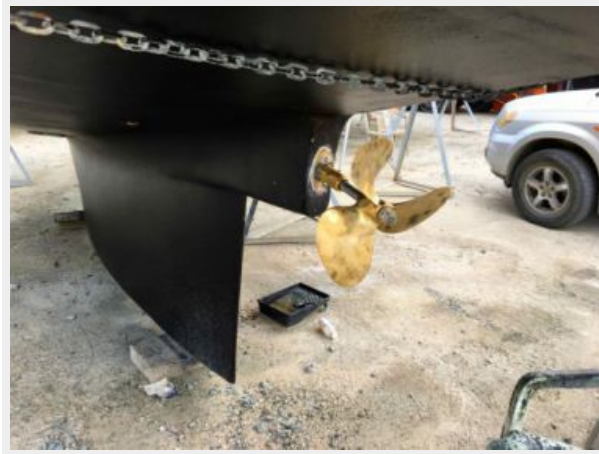












# CONTACTS

---

Andrey Shestakov, leading yacht broker of the sales department of Shestakov Yacht Sales Inc. Shestakov Yacht Sales Inc., the official representative of the Miami/Fort Lauderdale FL headquarters.

## Contact details

---

Email: [andrey@shestakovyachtsales.com](mailto:andrey@shestakovyachtsales.com)

Web: [shestakovyachtsales.com/en/](http://shestakovyachtsales.com/en/)

## Telephones

---

USA: +1(954)274-4435

## Office hours

---

Monday – Saturday: **9:00 - 21:00** EDT

Sunday: **closed**

## Address

---



Harbour Towne Marina, 850 NE 3rd St,  
STE 213, Dania, FL 33004