

SILVANA — HORIZON



Судостроитель: HORIZON

Год постройки: 2012

Модель: Моторная яхта

Цена: **ЦЕНА ЯХТЫ ПО ЗАПРОСУ**

Местонахождение: United States

Длина общая: 89' 4" (27.23m)

Ширина: 21' 0" (6.40m)

Макс. осадка: 5' 8" (1.73m)

Крейс. скорость: 18 Kts. (21 MPH)

Макс. скорость: 21 Kts. (24 MPH)

Купить **Silvana — HORIZON** а также выбрать подходящую вам яхту из нашего каталога яхт вам поможет опытный яхтенный брокер Андрей Шестаков. На сегодняшний день компания **Shestakov Yacht Sales Inc.** имеет большое количество яхт в собственном списке продаж, а также тесно сотрудничает со всеми крупными яхтенными производителями по всему миру.

Для того чтобы купить яхту **Silvana — HORIZON** а также проконсультироваться по любому вопросу связанному с покупкой, продажей, чартером яхт позвоните по телефону **+7(918)465-66-44**.

ОГЛАВЛЕНИЕ

ОГЛАВЛЕНИЕ	2
ХАРАКТЕРИСТИКИ	5
Основная информация	5
Размеры	5
Скорость, вместимость и масса	5
Размещение	5
Корпус и палуба	6
Информация о двигателе	6
ПОДРОБНОЕ ОПИСАНИЕ	7
Walk Through	7
Quick Specs	7
Flybridge & Boat Deck	8
Mechanical and Engine Details	9
Mechanical Systems	9
Electrical Systems	10
Interior decor and equipment	11
Salon	11
Galley	12
Electronics	12
pilothouse electronics	13
2017/2018 Upgrades	14
Broker Remarks	15
Tender	15
Исключения	15
Отказ от ответственности	16
ФОТОГРАФИИ	17
Exterior Profile	17
Exterior Profile	17

Exterior Profile	17
Exterior Profile	17
GA	18
Aft Deck	18
Aft Deck	18
Aft Deck	18
Salon	18
Salon	18
Salon / Formal Dining	19
Country Kitchen	19
Galley	19
Galley	19
Galley	19
Skylounge	19
Skylounge	20
Skylounge	20
Skylounge Head	20
Skylounge	20
Skylounge	20
Boat Deck	20
Boat Deck	21
Walk Around	21
Bow	21
Master Stateroom	21
Master Stateroom	21
Master Stateroom	21
Master Head	22
Master Stateroom	22
Master Head	22

Master Head	22
VIP Stateroom	23
VIP Stateroom	23
VIP Head	23
Twin Guest Stateroom	23
Twin Guest Head	24
Twin Bunk Guest Head	24
Twin Bunk Guest	24
Twin Guest Head	24
Twin Bunk Guest Head	25
Crew Mess	25
Crew	25
Captains Cabin	25
Crew Head	26
Crew Bunk	26
Engine Room Forward	26
Engine Room Aft	26
КОНТАКТЫ	27
Контактная информация	27
Телефоны	27
Время работы	27
Адрес	27

ХАРАКТЕРИСТИКИ

Основная информация

Тип судна: Моторная яхта

Модельный год: 2013

Год постройки: 2012

Страна: United States

Размеры

Длина общая: 89' 4" (27.23m)

Длина по ватерлинии: 75' 6" (23.01m)

Ширина: 21' 0" (6.40m)

Макс. осадка: 5' 8" (1.73m)

Скорость, вместимость и масса

Крейс. скорость: 18 Kts. (21 MPH)

Крейсерская скорость поворота: 2150 Kts.

Макс. скорость: 21 Kts. (24 MPH)

Макс. скорость поворота: 2300 Kts.

Водоизмещение: 190000 Pounds

Чистый вес: 85 Pounds

Вместимость воды: 500 Gallons

Объем топливного бака: 2700 Gallons

Размещение

Всего кают: 4

Спальные места: 8

Всего ком. состава: 7

Каюта капитана: Да

Каюты экипажа: 2

Койки экипажа: 3

Спальных мест экипажа: 4

Комм. состав экипажа: 1

Корпус и палуба

Материал корпуса: Fiberglass

Материал палубы: Fiberglass

Дизайнер корпуса: John Lindblom

Информация о двигателе

Двигатели: 2

Производитель: CAT

Модель: C32

ПОДРОБНОЕ ОПИСАНИЕ

Walk Through

With a 21' beam, the Horizon E88 contains generous interior volume. The main salon features walnut gloss finished wood. This full-beam salon features a starboard side day head, comfortable L-shaped sofa to port and loveseat to starboard. . Moving forward, formal dining is port with seating for (6) and starboard - stereo equipment, and a Sub Zero wine cooler. The country galley to port comes complete with granite countertops, beautiful cabinetry, generous storage and a leather U-shaped dinette forward with (2) stools. Starboard of the dinette is the staircase leading to the lower deck, which houses the master, VIP, twin guest and twin bunk staterooms with beech gloss finish wood throughout. To port of the companionway is the twin guest, hanging locker and ensuite head. To the starboard is the twin bunk and also features a hanging locker and private access to the head, washer/dryer in companionway. Forward is the VIP with a queen-size berth, (2) hanging lockers and a spacious ensuite head.

Moving aft to the mid-ship master stateroom with a king size bed, two night stands, to port a built in love seat and entrance to the master bath with a large shower, his and hers sinks and head inside a private water closet. On the starboard side of the master a vanity seating area with make-up mirror and large hanging locker.

The cavernous sky lounge has two Stidd helm chairs and to port a bank of cabinets with a pop-up TV and a day head. On the starboard side a large L-settee with a high low table.

Quick Specs

Hamann sanitary treatment system

Hydraulic steelhead davit SM 2500

Sea Recovery watermaker 900 gal/day

Zero Speed stabilizer

ABT Hydraulic bow/stern thruster

Octoplex system

100A Shorepower system

Reverso fuel polishing system

Delta-T engine room ventilation

White gel coat finish

One-piece hull lamination & longitudinal stringers

SCRIMP infusion process

Fiberglass solid hull bottom

High-density foam cored construction above waterline

Stringers with high density foam coring

Foam cored reinforcement for strength

Interior structural components all properly bonded to hull

Strong collision bulkhead for extra safety

International brand anti-fouling bottom paint w/ anti-osmosis treatment

Flybridge & Boat Deck

Nonskid boat deck

Removable S/S rails around boat deck

Custom FRP seating & table

FRP cabinet w/ sink & gas BBQ

Fiberglass radar arch w/antenna bracket

One Tokai Sunshine search light

Buell air horns on top of radar arch

Hydraulic dinghy davit Steelhead SM2500

Enclosed skylounge w/ S/S sliding door to boat deck with opening windows

(2) STIDD helm chairs

custom bar unit w/ fridge

dayhead

leather helm console

loose L-shaped seating & Hi/Lo dining table

Hi/Lo TV cabinet

Mechanical and Engine Details

Twin CAT C32A 1700 HP diesel engines w/reduction gears

S/S shafts Aquamet HS 22#

Main & intermediate bronze struts w/backing plates

Shaft & rudder packing glands w/ Tides seals

Docking station on aft deck stbd side

Glendinning engine controls w/ backup system & remote control

Hynautic power steering system

S/S rudder w/ zinc plates

S/S emergency tiller in rudder cabin

Hydraulic ABT bow thruster, 45 HP

Hydraulic ABT stern thruster, 46 HP

Zero Speed Stabilizer 300/9X

Hynautic heavy-duty trim tabs w/ indicators

Complete Delta-T engine room ventilation system

Fire insulation & insulated ER door

Engine alarm system for low oil pressure & high water temp

Air compressor

Central vacuum cleaner

Second Sea Recovery water maker

Mechanical Systems

Chilled water Marine Air air conditioning

2,700 Gallons Aluminum fuel tanks w/sight & electric gauges

Dual Racor 75/1000 MA fuel filters/water separator, each engine

Fuel transfer pump

Reverso FPS21S01 fuel polishing system

Oil change pump system for engines & generator

500 gallon fiberglass water tanks

Sea Recovery watermaker 900 gal/day

High-volume AC fresh water pressure pump & back up DC pump

Fresh water charcoal filters in main supply pipe & galley

Marine grade lines for fresh water system

Hot water circulation pump

Hamann sanitary waste treatment system

Tecma toilet system

200 gallon holding tank w/macerator pump

100 gallon sump tank

“Y” valve for holding tank with deck fitting for dockside pump out

Five electric Rule bilge pumps

(2) Manual bilge pumps in ER & forward cabin

Bilge exhaust ventilation fans

Fixed fire extinguisher (FM200) for ER w/ remote control

Auto shutdown system

Automatic fire damper system

(4) Portable fire extinguishers in recessed lockers

Electrical Systems

Octoplex switch panel system w/ Maretron monitoring system

(2) Onan 32kW generators w/ sound shield

100A shore power system w/ (2) 100A cable masters & (2) 100A ISO boost transformers

Fwd deck 100A shore power plugs

Inverter/Charger Xantrex XW4024

Guest battery switch (vapor proof)

(4) Engine start batteries

(8) 225 AH AGM batteries for ship's service power

(2) Emergency battery system batteries

Start battery for generator

GFI protection for all AC outlets in heads, galley & ER

Electrolysis bonding system

Cathodic protection w/ zinc anodes for shafts, struts, etc

(2) Underwater lights

(2) Stern docking lights

Interior decor and equipment

Guest accommodations include full beam master, port guest twin cabin, stbd bunk cabin & VIP, all en-suite Crew area has 2 staterooms, full head & crew galley/dinette w/ access from salon & transom

South American Walnut & Maitore burl hi-gloss on main deck & staterooms

Beech wood in crew

Dark silver lacquer wall finish & marble floors in galley & heads

Dayhead in skylounge & main salon

Godfrey Hirst carpet

Luxury interior package for soft goods & lighting

Salon

Custom marble floor at salon entrance

Custom dining table w/ 6 chairs

Leather L-shaped sofa, loveseat & custom chair

Galley

1: Upgraded Subzero Refrigerator/Freezer

2: (2) Subzero drawers

3: Black GE Profile Dishwasher

4: Broan trash compactor

5: GE 4- burner cooktop

6: Custom stainless vented exhaust hood & light

7: Wolf oven

Electronics

Panasonic PBX Telephone w/ intercom feature (outlets in salon, pilothouse, master & VIP)

Exterior connector for shore phone & TV

KVH HD7 satellite TV antenna & dummy dome

Wave WiFi system Panasonic PBX Telephone w/ intercom feature

(outlets in salon, pilothouse, master & VIP)

Exterior connector for shore phone & TV

KVH HD7 satellite TV antenna & dummy dome

Wave WiFi system

Aft Deck

32" Samsung LED TV

Bose Lifestyle stereo system

Salon

46" Samsung LED TV

Samsung Blu-ray player

Bose Lifestyle V35 home theatre system w/ iPod dock

Samsung Blu-ray player

Galley

32" Samsung LED TV

Bose Lifestyle stereo system

Master Stateroom

32" Samsung LED TV

Bose Lifestyle V25 home theatre system w/ iPod dock

Samsung Blu-ray player

Guest Staterooms

VIP 32" Samsung LED TV

Port Guest 22" Samsung LED TV

Sony stereo system in VIP, Port & Stbd Guest

Crew quarters

22" Samsung LED TV

Sony stereo system

Norcold freezer/fridge

GE microwave

pilothouse electronics

40" Samsung LED TV

Bose Lifestyle 235 home theatre system Samsung Blu-ray player

Display: (3) Raymarine E140W 14.1" widescreen hybrid touch

Radar: (1) Raymarine RA1048SHD 48" 4kW open array

(1) Raymarine RA3072SHD 72" 12kw open array

Raymarine RAYSTAR 125 plus and (1) backup unit

Raymarine DSM300 and Airmar B744V fishfinder/sounder

Raymarine Smart Pilot Core Pack Autopilot

(2) Raymarine ST70 Instrument display & ST70 autopilot display

Raymarine short arm wind transducer & ST70 wind transducer pod

Raymarine AIS650 transceiver module

Raymarine Ray128 VHF

Raymarine aft 4"/10W loud hailer & fwd 30W loud hailer

Furuno NX700B dual-channel NAVTEX receiver

Danforth magnetic compass

2017/2018 Upgrades

- CAT warranty thru December 2021.
- New titanium 48,000 btu chiller units x 3 replaced 2018
- Upgraded frequency drives 2018
- New air conditioning scott raw water pump replaced 2018
- New air conditioning glycol circ pump late 2018
- Generator heat exchangers & zincs replaced 2018
- Generator raw water pumps replaced 2018
- Generator insulation/sound shield replaced 2017
- Generator exhausts removed & inspected
- Generator thermostats replaced
- Generator internal circ pump replaced
- New bow thruster heat exchanger & zincs replaced late 2018
- Transmission heat exchangers removed & serviced mid 2018
- 3/16th custom aft deck sunshower & quick connects
- New boat deck stainless BBQ
- New boat deck custom storage locker & cushions

- New non skid boat deck
- New boat deck crane remote
- Bow windlass serviced 2018
- New windlass hand remotes late 2017
- Bridge Maretron control unit upgraded 2018
- Bridge information displays replaced 2018/screen failure
- New engine room raw water piping 2018
- Both water makers removed & serviced late 2017/remounted for access
- Eskimo ice machine removed & overhauled by domestic late 2018/relocated for access
- New carpet entire interior late 2017
- Flooring in galley re surfaced late 2017
- Swim platform locking mechanism upgraded late 2017
- Stabilizers removed & serviced late 2017
- Bow & stern thruster units removed & serviced late 2017
- Propellers removed & balanced late 2017
- Cutlass bearings replaced late 2017
- New spurs late 2017
- All raw water manifolds replaced in engine room

Broker Remarks

This 2013 Horizon E88 skylounge motoryacht Silvana built on a 21' beam features four staterooms with two crew cabins aft. A generous country galley, formal dining area, day heads on the main deck and in sky lounge. Powered with Twin CAT C-32 1700hp engines, waste treatment system, zero speed stabilizers, hydraulic swim platform, New AC chiller units, large ice chipper, extra exterior storage. hydraulic stern/bow thrusters, water maker, and octuplex system. This one owner motor yacht is seriously for sale and ready for its next owner.

Tender

2013 Williams Diesel Jet Boat

Исключения

При продаже яхты исключаются личные вещи владельца.

Отказ от ответственности

Компания предоставляет описание судна или яхты добросовестно, но не может гарантировать точность этой информации, а также не ручается за техническое состояние. Покупатель должен проинструктировать своих агентов или оценщиков исследовать представленную информацию более подробно, по собственному желанию. Продажа судна или яхты, изменение цены или снятие с продажи будет происходить без предварительного уведомления.

ФОТОГРАФИИ

Exterior Profile



Exterior Profile



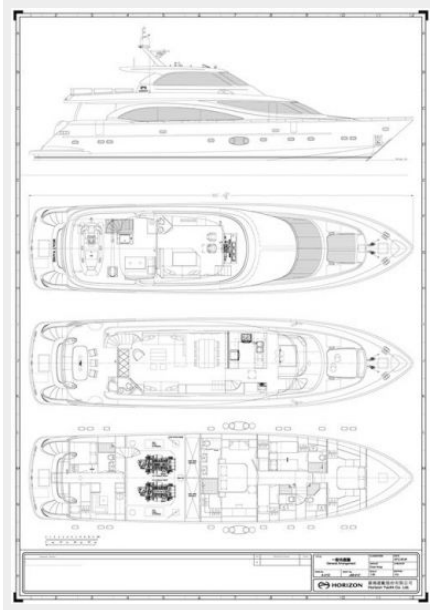
Exterior Profile



Exterior Profile



GA



Aft Deck



Aft Deck



Aft Deck



Salon



Salon



Salon / Formal Dining



Country Kitchen



Galley



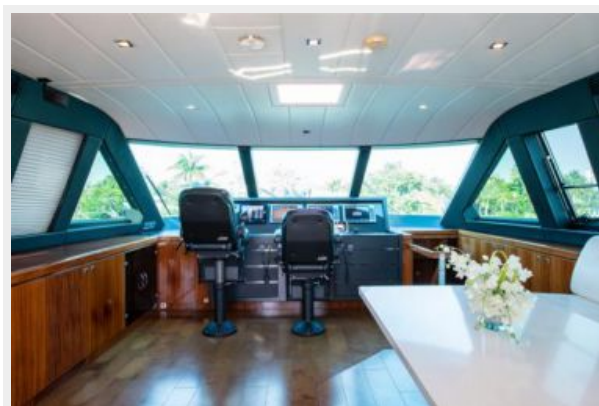
Galley



Galley



Skylounge



Skylounge



Skylounge



Skylounge Head



Skylounge



Skylounge



Boat Deck



Boat Deck



Walk Around



Bow



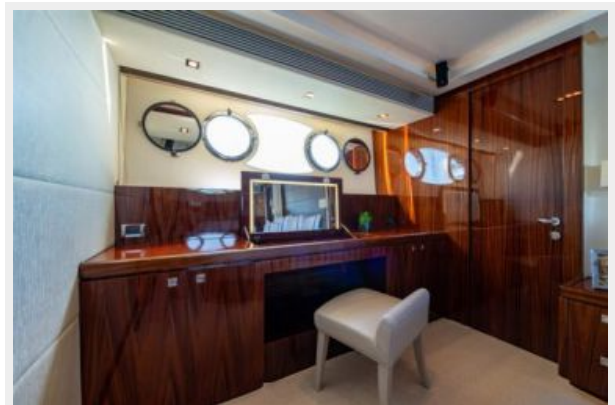
Master Stateroom



Master Stateroom



Master Stateroom



Master Stateroom

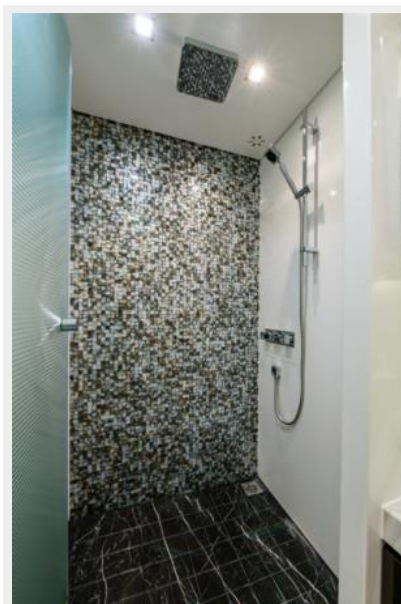


Master Head



Master Head

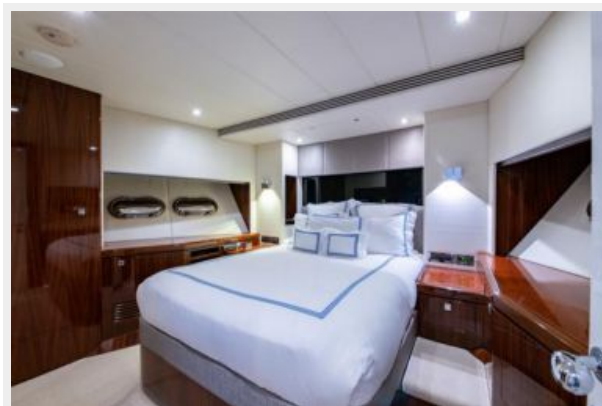
Master Head



VIP Stateroom



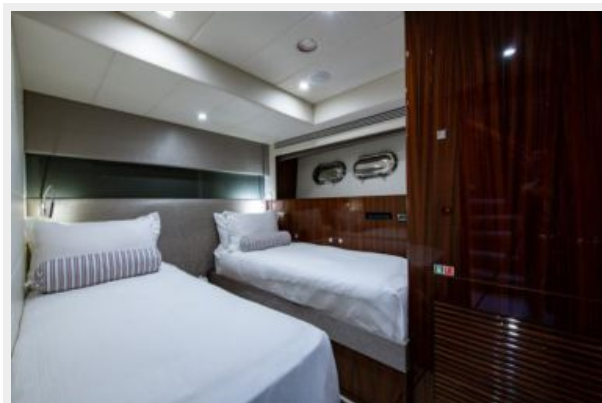
VIP Stateroom



VIP Head



Twin Guest Stateroom



Twin Guest Head



Twin Bunk Guest Head



Twin Bunk Guest



Twin Guest Head



Twin Bunk Guest Head



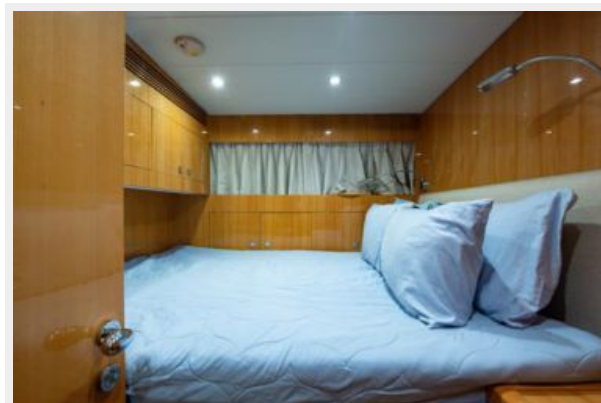
Crew Mess



Crew



Captains Cabin



Crew Head



Crew Bunk



Engine Room Forward



Engine Room Aft



КОНТАКТЫ

Андрей Шестаков (Andrey Shestakov) – ведущий яхтенный брокер отдела продаж яхт и судов компании Shestakov Yacht Sales Inc. Официальный представитель Shestakov Yacht Sales Inc. для русскоговорящих клиентов в центральном офисе компании в Майами/Форт Лодердейл/Флорида/США.

Контактная информация

Email: andrey@shestakovyachtsales.com

Web: shestakovyachtsales.com

Телефоны

Краснодарский край: **+7(918)465-66-44**

США, Майами, Флорида: **+1(954)274-4435**

Время работы

Понедельник – Суббота: **9:00 - 21:00**
EDT

Воскресенье: **Закрито**

Адрес



Harbour Towne Marina, 850 NE 3rd St,
STE 213, Dania, FL 33004