

REEL JANIE — MERRITT BOAT WORKS



Builder: MERRITT BOAT WORKS

Year Built: 1996

Model: Sport Fisherman

Price: PRICE ON APPLICATION

Location: United States

LOA: 75' (22.86mm)

Beam: 19.66

Max Draft: 5' 8" (1.73mm)

Cruise Speed: 27 Knots Kts. (31 MPH)

Max Speed: 33 Knots Kts. (38 MPH)

Our experienced yacht broker, Andrey Shestakov, will help you choose and buy a yacht that best suits your needs **REEL JANIE — MERRITT BOAT WORKS** from our catalogue. Presently, at **Shestakov Yacht Sales Inc.**, we have a wide variety of yachts available on our sale's list. We also work in close contact with all the big **yacht manufacturers** from all over the world.

If you would like to buy a yacht **REEL JANIE — MERRITT BOAT WORKS** or would like help answering any questions concerning purchasing, selling or chartering a yacht, please call **+1(954)274-4435**

TABLE OF CONTENTS

TABLE OF CONTENTS	2
SPECIFICATIONS	3
Overview	3
Basic Information	3
Dimensions	3
Speed, Capacities and Weight	3
Accommodations	3
Hull and Deck Information	4
Engine Information	4
PHOTOS	5
CONTACTS	13
Contact details	13
Telephones	13
Office hours	13
Address	13

SPECIFICATIONS

Overview

REEL JANIE is a cold molded pedigreed custom sportfish. Sea Keeper Stabilized 10/17. Stunning Interior with African Sapele and Sapele Parmalay Burl Wood. Museum Quality Fossilized Sandstone Countertops. Very Spacious 3 Stateroom 3 Head Layout With Large Salon and Galley. New (2) MTU 16V2000 1800 HP - 2001. New (2) Kilo-Pac 40 KW Gens - 2007. New Mezzanine - 2007. New Teak Decks - 2007

Basic Information

Category: Sport Fisherman

Model Year: 1996

Year Built: 1996

Country: United States

Dimensions

LOA: 75' (22.86mm)

Beam: 19.66

Max Draft: 5' 8" (1.73mm)

Speed, Capacities and Weight

Cruise Speed: 27 Knots Kts. (31 MPH) **Max Speed:** 33 Knots Kts. (38 MPH)

Water Capacity: 450 Gallons

Fuel Capacity: 2850 Gal Gallons

Accommodations

Total Cabins: 3

Total Berths: 5

Sleeps: 6

Total Heads: 3

Hull and Deck Information

Hull Material: Cold Molded

Hull Designer: Merritt's Boat & Engine Works

Exterior Designer: Merritt's Boat & Engine Works

Interior Designer: Merritt's Boat & Engine Works

Engine Information

Engines: 2

Manufacturer: MTU

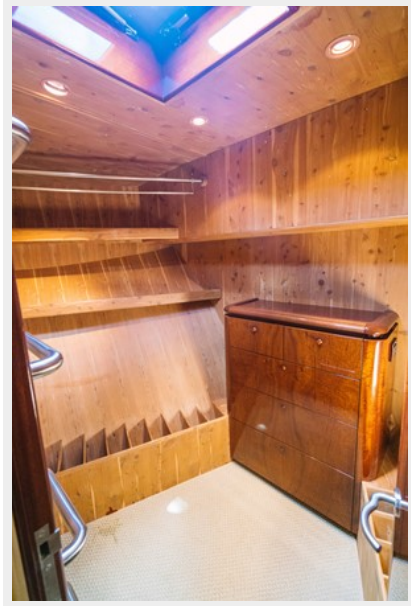
Engine Type: Inboard

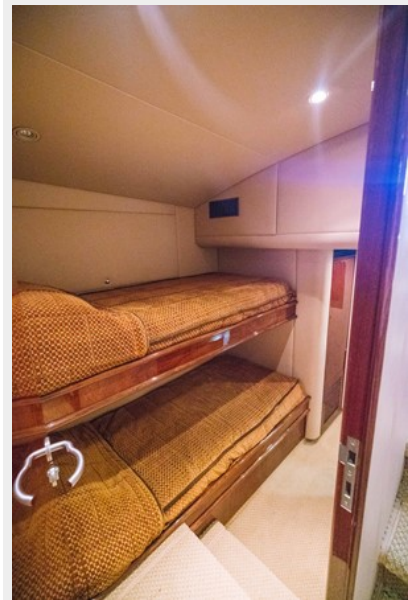
Fuel Type: Diesel

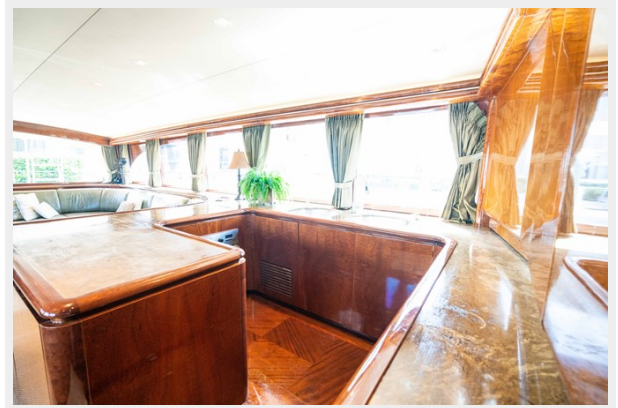
PHOTOS



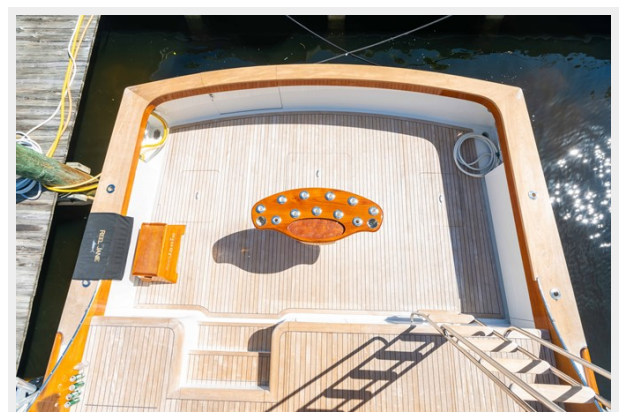














CONTACTS

Andrey Shestakov, leading yacht broker of the sales department of Shestakov Yacht Sales Inc. Shestakov Yacht Sales Inc., the official representative of the Miami/Fort Lauderdale FL headquarters.

Contact details

Email: **andrey@shestakovyachtsales.com**

Web: shestakovyachtsales.com/en/

Telephones

USA: **+1(954)274-4435**

Office hours

Monday – Saturday: **9:00 - 21:00** EDT

Sunday: **closed**

Address



Harbour Towne Marina, 850 NE 3rd St, STE 213, Dania, FL 33004