

## PC 60 — HORIZON



**Судостроитель:** HORIZON

**Год постройки:** 2021

**Модель:** Катамаран

**Цена:** ЦЕНА ЯХТЫ ПО ЗАПРОСУ

**Местонахождение:** United States

**Длина общая:** 60' 0" (18.29m)

**Ширина:** 24' 6" (7.47m)

**Макс. осадка:** 4' 9" (1.45m)

**Крейс. скорость:** 18 Kts. (21 MPH)

**Макс. скорость:** 21 Kts. (24 MPH)

Купить PC 60 — HORIZON а также выбрать подходящую вам яхту из нашего каталога яхт вам поможет опытный яхтенный брокер Андрей Шестаков. На сегодняшний день компания Shestakov Yacht Sales Inc. имеет большое количество яхт в собственном списке продаж, а также тесно сотрудничает со всеми крупными яхтенными производителями по всему миру.

Для того чтобы купить яхту PC 60 — HORIZON а также проконсультироваться по любому вопросу связанному с покупкой, продажей, чартером яхт позвоните по телефону **+7(918)465-66-44**.

# ОГЛАВЛЕНИЕ

---

ОГЛАВЛЕНИЕ	2
ХАРАКТЕРИСТИКИ	4
Обзор	4
Основная информация	4
Размеры	4
Скорость, вместимость и масса	4
Размещение	5
Корпус и палуба	5
Информация о двигателе	5
ПОДРОБНОЕ ОПИСАНИЕ	6
Exterior Deck and Equipment	6
Flybridge and Boat Deck Flybridge	7
Engine Propulsion and Steering System	7
Engine Room and Equipment	8
Electrical System	8
Navigation and Instrumentation	8
Mechanical System	9
Interior Design and Equipment/ Salon layout	9
Accommodations	10
Galley	11
Entertainment Systems	12
Hull and Main Structure	12
Disclaimer	12
Исключения	12
Отказ от ответственности	13
ФОТОГРАФИИ	14
КОНТАКТЫ	16
Контактная информация	16

---

Телефоны	16
Время работы	16
Адрес	16

---

# ХАРАКТЕРИСТИКИ

## Обзор

The Horizon PC60 power catamaran is a luxurious bluewater cruising yacht, specifically designed, engineered and built to meet the demands of the most discerning yacht owner. With a massive 24'6" beam, the PC60 has the accommodations of a much larger yacht and unsurpassed sea-keeping characteristics. The success of the Horizon PC60 speaks volumes and this PC60 hull #18 will continue the tradition.

A personal tour of this spectacular power catamaran (first on the West Coast) is highly recommended. Spring arrival to Seattle. This particular one is pre-sold but we will be showing it to take orders for a future PC60.

## Основная информация

**Тип судна:** Катамаран

**Модельный год:** 2021

**Год постройки:** 2021

**Страна:** United States

**Открытая палуба мостика:** Да

## Размеры

**Длина общая:** 60' 0" (18.29m)

**Длина по ватерлинии:** 53' 8" (16.36m)

**Ширина:** 24' 6" (7.47m)

**Макс. осадка:** 4' 9" (1.45m)

**Трапы:** 26' 5" (8.05m)

## Скорость, вместимость и масса

**Крейс. скорость:** 18 Kts. (21 MPH)

**Макс. скорость:** 21 Kts. (24 MPH)

**Водоизмещение:** 78985 Pounds

**Вместимость воды:** 279 Gallons

**Вместимость сточного бака:** 100 Gallons **Объем топливного бака:** 1000 Gallons

## Размещение

---

**Всего кают:** 3

**Всего ком. состава:** 3

## Корпус и палуба

---

**Материал корпуса:** Fiberglass

**Комплектация корпуса:** Катамаран

## Информация о двигателе

---

**Двигатели:** 2

**Производитель:** Cummins

**Модель:** QSM11

**Тип двигателя:** Inboard

**Тип топлива:** Diesel

# ПОДРОБНОЕ ОПИСАНИЕ

## Exterior Deck and Equipment

- Gunwale with external rub rail
- Fiberglass cap rail
- Mooring cleats with hawse pipes in gunwale
- Locker for 24V anchor windlass with foot switches
- Anchor control at flybridge
- Roller and S/S chain stopper for anchor
- Heavy-duty S/S handrail. Top Rail 1-1/2", stanchions 1-1/4" and mid rail 1"
- Pulpit seats at bow
- Deck hatch for access to 63kg S/S anchor 175 ft of high tensile 3/8" chain plus 100ft mooring rope
- Fresh water at chain locker
- Bow storage lockers (x2) with access through flush deck hatches
- Opening portlights (x6)
- Hull side frameless and flush mounted seam windows tinted and tempered glass for master & VIP cabin
- Deck hatches (x2) with blinds & screens
- Stainless steel framed salon door with 6ft opening
- Port and starboard sides boarding door
- Non-skid deck
- FRP curved seat with cushions
- Large, solid satin finished fixed height wood cockpit table
- Large curved steps (x2) down to large dive/swim platform
- Manual swim ladder (x2)
- Cockpit lockers for storage
- Cockpit LED down lights
- Courtesy lights
- Hot and cold fresh water shower (x2) recessed into aft coaming
- Fresh water deck wash tap and dock inlet at portside
- Canvas covers for helm console, Stidd helm chair, FRP lounge seating & table, BBQ on the flybridge, aft cockpit seating, and special padded cover for aft cockpit table
- Comfortable curved stairway with teak treads up to flybridge from aft deck
- Recessed fuel and water inlets
- Swim platform with S/S rails on each hull
- **Option - Anchor chain counter**
- **Option - Fuel gauges with fuel sensor at fill inlets**
- **Option - (3) Burnewin rod holders at transom**
- **Option - Aft deck bar with sink, fridge and icemaker**
- **Option - Aft deck TV cabinet (32' TV)**
- **Option - After deck teak table (Hi-gloss in lieu of satin)**

- **Option - (4) Underwater lights (blue)**
- **Option - (2) Morse stern docking lights**
- **Option - Synthetic PlasDeck decking (aft deck and stairs)**
- **Option - Pre-wire for stern LED name plate**

---

## Flybridge and Boat Deck Flybridge

---

- Non-skid flybridge cambered deck with ample drainage
- Navigation LED lights
- Ample locker space for storage
- Wet bar with sink, hot and cold water, fridge
- Indirect lighting under Corian bar counter
- Luxurious lounge seating
- Satin finished teak coffee table
- Helm station with S/S wheel
- Stidd pilot chair (x1)
- Instrument console with engine controls , chart plotters instrument monitors and panels, fuel tank monitoring system
- Remote controls for spot light and ship's horn
- Bilge pump monitors and controls
- Comfortable stairs for access to aft deck with stainless handrails
- Hard top ceiling lights
- Hardtop reinforced for Nav gear to be mounted on top
- Steelhead E1000 hydraulic crane for tender on flybridge
- S/S flag pole on stern
- **Option - Rail around flybridge aft deck coaming**
- **Option - (3) flybridge S/S swivel bar stools**
- **Option - hardtop hatch above console**
- **Option - Three clear glass front panels with center wiper**
- **Option - (3) sided flybridge isinglass enclosure with sliding windows and door**
- **Option - Extra bar with BBQ lid and cold fresh water wash down faucet**
- **Option - Pre-wire for Dometic freezer below Flybridge port bench seat**
- **Option - Air conditioning/heating (2 outlets)**
- **Option - Hi-Gloss teak table**
- **Option - Upgraded 4 1/2" compass**
- **Option - Single spigot flush mount wash down box**
- **Option - upgrade flybridge and aft deck bar counter to Corian**

---

## Engine Propulsion and Steering System

---

- Cummins QSM11 705 HP engines
- Dual Racor filters in each engine room

- S/S shafts AQUAMET HS 22# or equivalent
- High performance S class 4 blade propellers in NiAlBr
- Bronze P bracket
- Shaft and rudder packing glands with maintenance free Tides seals
- Stainless rudder with zinc plates
- Power Steering system
- Underwater exhaust system with bypass and mufflers

---

## Engine Room and Equipment

---

- Sound and heat insulated compartments
- Ventilation system with moisture eliminators
- 17 kW (60Hz) Onan generator with sound shield and air water separator
- Engine access through deck hatches in cockpit floor
- DC lights
- Automatic fire extinguisher outlets
- High water bilge pumps with alarms
- Oil change pump system for engine gears, and generators
- Marine Air – central air conditioning for each cabin and salon

---

## Electrical System

---

- 110V or 220v electrical supply from generator/shore power
- Shore power connector 50amp inlet
- Automatic transform switch for AC power supply
- Color-coded wiring for easy identification
- Premium DC distribution board with switches, voltmeter and amp meter
- Remote panel for generator
- Four 210Ah AGM batteries for ship's DC24V service power
- Premium AC panel with switches 110/220VAC, 50A dock inlet
- Navigation light selection panel
- Fresh, black water & diesel tank gauges
- Four 210Ah AGM start batteries for engines/generator
- 3KW inverter
- Vimar switches for lighting switches and receptacles
- Outlets in salon, bar, galley, cabins, flybridge, aft deck, and engine room
- AC and DC distribution panels
- **Option - 75' 50amp Cablemaster**
- **Option - Dimmer switch for aft deck ceiling lights**

---

## Navigation and Instrumentation

---



- Garmin GPS
- Garmin 48" 48mile open array radar system
- Garmin 15.5" (x2) multifunction displays
- Garmin Autopilot System
- Garmin Wind/Speed/Temp/Depth transducers
- Garmin VHF at flybridge (with built-in loudhailer) and interior navigation station
- Garmin AIS

## Mechanical System

---

- Washer and separate dryer including laundry cabinets and iron board
- 75 Gallon holding tanks (x2), Y valve for overboard discharge or dock side pump out
- 250 Gallon water tank
- Water and black tank integral to hull
- Color coded piping for easy identification
- High water bilge alarm
- Electric 24V bilge pumps (x6)
- Marine grade lines for fresh water system
- 60 Gallon hot water heater to genset
- Fuel transfer pumps
- High volume AC fresh water pump
- **Option - Reverso fuel polishing system**
- **Option - Fuel pump operational solenoid**
- **Option - Pre-wire 24DC / plumb for watermaker**
- **Option - Upgrade to Headhunter toilet system**

## Interior Design and Equipment/ Salon layout

---

- Standard layout: Ensuite staterooms (x3)
- Plush wool carpeting or hardwood flooring
- Tempered safety glass windows
- Luxurious salon sofa covered in fabric
- Soft furnishings including roman blinds
- Fabric headliner with recessed down lights
- Window valance
- Side tables with storage
- Satin wood finish on vertical and horizontal surfaces.
- LED Ceiling lights
- Office desk with chair
- Storage cabinets and drawers
- **Option - upgrade shower seat to Corian in (3) heads**
- **Option - install Silver Shell for splash wall in master/VIP heads**

- ***Option - New PC60 interior designer concept (see booklet)***
- ***Option - Upgrade to hi-gloss Eucalyptus Smoked wood for salon desk***
- ***Option - Custom salon folding table with hi-lo mechanism for dining and coffee table***

## Accommodations

---

### Master Stateroom

- Carpeted or wood flooring
- Soft furnishings include blinds on all side windows
- King size walk around bed with pocket spring mattress
- Reading lights and cabin lights
- Night stands with cupboard, light switches and outlets
- Headliner with recessed down lights
- Vanity desk with stool in passage way
- Large dressing area with full height closets, cedar lined
- Sound insulated bulkheads
- Big seam glass window in cabin and above vanity desk

### Master Stateroom – En Suite Bathroom

- Vanity with stool and mirror with large window
- Blind over port lights
- Large dual basin, cabinets, overhead lockers, and mirrors
- Luxury walk-in separate shower
- Toilet with basin and cabinets
- Large closets for linens/towels and clothes
- ***Option - Custom made laundry hamper***
- ***Option - Custom vanity with extra length countertop, mirror and special lighting***

### VIP Cabin

- King size bed – semi walk around
- Carpeted or wood flooring
- Soft furnishings including roman blind over large window
- Luxury pocket spring mattress
- Reading lights, cabin lights
- Night stands with cupboard, light switches and outlets
- Vanity with mirror and stool
- Closets, cedar lined
- Fabric headliner with recessed down lights
- En suite bathroom with walk-in shower, head and basin
- Opening port-light in shower room for natural light and ventilation
- Big scene glass window in cabin and head

## Guest Cabin

- Twin beds
- Carpeted or wood flooring
- Soft furnishings including roman blind over port light
- Luxury foam mattress
- Reading lights, cabin lights
- Opening port light in hull side
- Night stand with drawers, light switches and outlets
- Fabric headliner with recessed down lights
- En suite bathroom with walk-in shower, head and basin
- Opening port-lights for natural light and ventilation
- **Option - Insert for twin beds**
- **Option - Extra crew/kids room with bed, mattress, headboard, porthole in utility room**
- **Option - added pocket door between crew/kids room and laundry area**
- **Option - custom insert for stud room in bed to make into a queen**

## Galley

---

### Bar (Port of Salon)

- Corian bar counter
- Storage for drinks bottles and glasses
- Storage cupboards
- Recessed overhead lights
- Main control AC/DC panel

### Galley

- Corian counter tops and back splashes
- GE stainless steel refrigerator with freezer
- Cutlery & crockery drawers
- GE Dishwasher
- Pot and pan drawer & spice cupboard
- Additional storage drawers and cupboards
- Double sinks with garbage disposal
- Under counter trash drawer
- **Option - (3) bar stools**
- **Option - Summit Wine cooler**
- **Option - Upgraded GE Oven**
- **Option - Upgraded Electrolux gas cooktop with shut off solenoid**
- **Option - Upgraded Fisher Paykel refrigerator/freezer**

---

## Entertainment Systems

---

- Flybridge Fusion Marine Stereo (x1) and speakers (x4)
- Salon 40" LCD TV with Sonos Sound System and separate Blu-ray disc player
- Aft deck Fusion Marine Stereo (x1) and speakers (x2)
- Master cabin 32" LCD TV with Fusion Marine Stereo (x1) and SM speakers (x2)
- VIP cabin 19" LCD TV with Fusion Marine Stereo (x1) and SM speakers (x2)

---

## Hull and Main Structure

---

- ABS/DNV type approved fiber/resin & sandwich core material applied
- White gelcoat finish for hull above waterline, exterior decks and furniture
- One piece hull SCRIMP™ cored lamination w/deep skeg and longitudinal girders
- Hull, deck & superstructure are built with licensed process SCRIMP™ for improved strength and less weight
- Fiberglass solid hull bottom
- High-density Divinycell or equivalent foam cored hull sides, decks and superstructure
- Stringers with high density foam coring
- Interior structural components all properly bonded to hull
- Strong collision bulkhead structure for extra safety
- International anti-fouling bottom paint, w/anti-osmosis treatment
- PropSpeed/PropGold metal paint for underwater appendages
- Tunnels for reduced draft

---

## Disclaimer

---

The Company offers the details of this vessel in good faith but cannot guarantee or warrant the accuracy of this information nor warrant the condition of the vessel. A buyer should instruct his agents, or his surveyors, to investigate such details as the buyer desires validated. This vessel is offered subject to prior sale, price change, or withdrawal without notice.

---

## Исключения

---

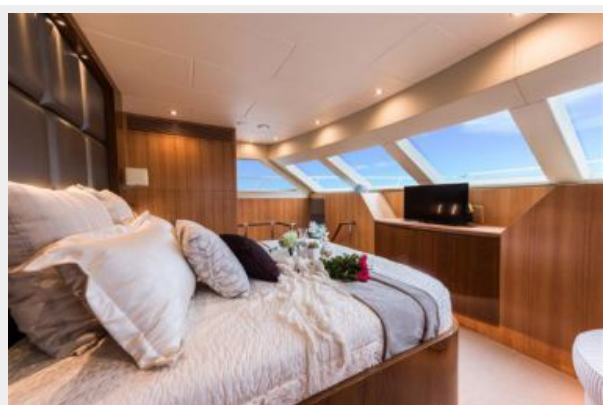
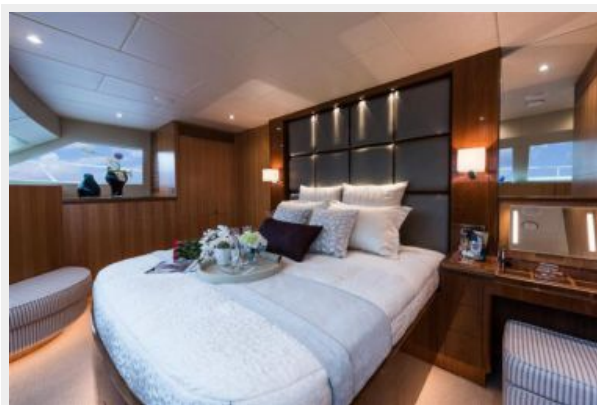
При продаже яхты исключаются личные вещи владельца.

## Отказ от ответственности

---

Компания предоставляет описание судна или яхты добросовестно, но не может гарантировать точность этой информации, а также не ручается за техническое состояние. Покупатель должен проинструктировать своих агентов или оценщиков исследовать представленную информацию более подробно, по собственному желанию. Продажа судна или яхты, изменение цены или снятие с продажи будет происходить без предварительного уведомления.

# ФОТОГРАФИИ





# КОНТАКТЫ

---

Андрей Шестаков (Andrey Shestakov) – ведущий яхтенный брокер отдела продаж яхт и судов компании Shestakov Yacht Sales Inc. Официальный представитель Shestakov Yacht Sales Inc. для русскоговорящих клиентов в центральном офисе компании в Майами/Форт Лодердейл/Флорида/США.

## Контактная информация

---

Email: [andrey@shestakovyachtsales.com](mailto:andrey@shestakovyachtsales.com)

Web: [shestakovyachtsales.com](http://shestakovyachtsales.com)

## Телефоны

---

Краснодарский край: **+7(918)465-66-44**

США, Майами, Флорида: **+1(954)274-4435**

## Время работы

---

Понедельник – Суббота: **9:00 - 21:00**  
EDT

Воскресенье: **Закрето**

## Адрес

---



Harbour Towne Marina, 850 NE 3rd St,  
STE 213, Dania, FL 33004