

LA BELLE EPOQUE — FAIRLINE



Судостроитель: FAIRLINE

Год постройки: 2013

Модель: Моторная яхта

Цена: ЦЕНА ЯХТЫ ПО ЗАПРОСУ

Местонахождение: United States

Длина общая: 65' 0" (19.81m)

Ширина: 17' 2" (5.23m)

Макс. осадка: 4' 11" (1.50m)

Купить La Belle Epoque — FAIRLINE а также выбрать подходящую вам яхту из нашего каталога яхт вам поможет опытный яхтенный брокер Андрей Шестаков. На сегодняшний день компания Shestakov Yacht Sales Inc. имеет большое количество яхт в собственном списке продаж, а также тесно сотрудничает со всеми крупными яхтенными производителями по всему миру.

Для того чтобы купить яхту La Belle Epoque — FAIRLINE а также проконсультироваться по любому вопросу связанному с покупкой, продажей, чартером яхт позвоните по телефону **+7(918)465-66-44**.

ОГЛАВЛЕНИЕ

ОГЛАВЛЕНИЕ	2
ХАРАКТЕРИСТИКИ	5
Обзор	5
Основная информация	5
Размеры	5
Скорость, вместимость и масса	6
Размещение	6
Корпус и палуба	6
Информация о двигателе	6
ПОДРОБНОЕ ОПИСАНИЕ	7
Notable Options	7
Salon	7
Galley	7
Master Stateroom	8
Master Stateroom	8
Master Head	9
Forward Stateroom	9
Starboard Guest Stateroom	10
Helm	10
Engines	11
Flybridge	11
Aft Cockpit	12
Deck	13
Hull Form and Construction	13
Disclaimer	14
Исключения	14
Отказ от ответственности	14
ФОТОГРАФИИ	16

Fairline 65 Squadron 2013 - Salon	16
Fairline 65 Squadron 2013 - Salon	16
Fairline 65 Squadron 2013 - Galley	16
Fairline 65 Squadron 2013 - Galley	16
Fairline 65 Squadron 2013 - Companionway	16
Fairline 65 Squadron 2013 - Galley	16
Fairline 65 Squadron 2013 - Master Stateroom	17
Fairline 65 Squadron 2013 - Master Stateroom	17
Fairline 65 Squadron 2013 - Master Stateroom	17
Fairline 65 Squadron 2013 - Master Stateroom Head	17
Fairline 65 Squadron 2013 - Guest Stateroom	17
Fairline 65 Squadron 2013 - Guest Head	17
Fairline 65 Squadron 2013 - Guest Stateroom	18
Fairline 65 Squadron 2013 - Helm	18
Fairline 65 Squadron 2013 - Helm	18
rFairline 65 Squadron 2013 - Electronics	18
Fairline 65 Squadron 2013 - Entertainment System	18
Fairline 65 Squadron 2013 - Cockpit	18
Fairline 65 Squadron 2013 - Transom	19
Fairline 65 Squadron 2013 - Cockpit	19
Fairline 65 Squadron 2013 - Flybridge	19
Fairline 65 Squadron 2013 - Flybridge Helm	19
Fairline 65 Squadron 2013 - Flybridge	19
Fairline 65 Squadron 2013 - Flybridge	19
Fairline 65 Squadron 2013 - Bow	20
Fairline 65 Squadron 2013 - Walk-Around	20
Fairline 65 Squadron 2013 - Foredeck	20
Fairline 65 Squadron 2013 - Fairline Logo	20
Fairline 65 Squadron 2013 - Logo	20

Fairline 65 Squadron 2013 - Profile	20
Fairline 65 Squadron 2013 - Profile	21
Fairline 65 Squadron 2013 - Profile	21
Fairline 65 Squadron 2013 - Profile	21
КОНТАКТЫ	22
Контактная информация	22
Телефоны	22
Время работы	22
Адрес	22

ХАРАКТЕРИСТИКИ

Обзор

If you're in search of a 65-70FT yacht, this 2013 Fairline 65 Squadron should be the first stop on your list. The massive flybridge with hydraulic bimini top separates this 65FT flybridge yacht from the others and allows it to compete with larger flybridge vessels in its class. As you enter through the sliding cockpit doors you move pass the award winning Bang and Olufsen TV and sound system in the saloon and continue forward to the state room entry you cannot help but imagine entertaining family and guest in the massive saloon and galley. Continuing below you are greeted with a generous VIP cabin forward with floating bed design. Included in the VIP cabin is an en suite head that rivals most master suite heads in other yachts. Moving to the stern of the vessel you pass a day head, a twin side by side berth and twin bunk berths just before entering the luxurious and open master suite. You cannot help but notice the massive feel of this master suite with the addition of the glass wall separating the head from the stateroom.

Conveniently located in St. Petersburg, Fl.

Основная информация

Тип судна: Моторная яхта	Подкатегория: Flybridge
Модельный год: 2013	Год постройки: 2013
Страна: United States	Регистрационный номер: 1245663
Открытая палуба мостика: Да	Кубрик: Да

Размеры

Длина общая: 65' 0" (19.81m)	Ширина: 17' 2" (5.23m)
Макс. осадка: 4' 11" (1.50m)	Длина привального бруса: 65' 0" (19.81m)

Скорость, вместимость и масса

Водоизмещение: 72510 Pounds

Вместимость воды: 305 Gallons

Объем топливного бака: 936 Gallons

Размещение

Всего кают: 3

Спальные места: 6

Всего ком. состава: 2

Корпус и палуба

Материал корпуса: Fiberglass

Информация о двигателе

Двигатели: 2

Производитель: Caterpillar

Модель: C-18

Тип двигателя: Inboard

Тип топлива: Diesel

ПОДРОБНОЕ ОПИСАНИЕ

Notable Options

- Tropical air conditioning w/22.5 kw generator
- Anchoring upgrade package
- 16FT BRIGG tender
- B&O 40" TV and sound system
- KVH M-7 Trac-vision Sat TV System
- Hydraulic bimini top w/ new canvas replaced 2019
- Garmin GC10 cameras (2)
- Teak side decks
- Teak flybridge flooring
- LCD fuel filler displays and fuel sight gauges
- Electrically adjustable helm and co-pilot seats
- Complete crew quarters w/ full head
- Blue LED exterior lighting
- Multi-Color LED accent lighting throughout entire vessel
- Underwater lights
- Passarelle
- Side-boarding ladder
- Hydraulic bow and stern thrusters with proportional control
- High Gloss Walnut interior wood
- Skysol shades in cabins

Salon

- Bang & Olufsen® 40" TV cinema system with 5 internal speakers and subwoofer and 2 cockpit speakers
- Drinks cabinets complete with 6 'Squadron' engraved lead crystal tumblers
- First aid kit
- Gold bullion venetian blinds
- Handrail
- LED ceiling lights
- Power lift TV feature
- Sideboard
- Sliding door to cockpit
- Sofa with storage lockers

Galley

- Avonite® work surface with covers
- Combination oven/microwave/grill
- Crockery stowage
- Electric induction hob
- Extractor fan
- FAIRLINE EDITION china dinner service and cutlery set
- Fire extinguisher
- First aid kit
- Freezer
- Integrated waste bin
- LED ceiling lights
- Power drop window
- Random teak floor
- Refrigerator
- Stowage cupboards and drawers
- Timber cupboard doors
- Twin sinks with hot and cold mixer tap
- Work surface lights

Master Stateroom

- 32" TV with Video iBoat dock
- Double bed with interior sprung mattress
- Drawer(s) under bed
- Feature windows with opening portholes
- Full-height standing headroom
- Full length mirror
- Full set of Heirlooms fine bed linen (includes pillows and duvet)
- Gold bullion Venetian blinds
- LED ceiling lights
- Reading lights
- Twin bedside tables
- Upholstered bedhead
- Vanity unit/bureau with chair
- Wardrobe with cedar linings

Master Stateroom

- 32" TV with Video iBoat dock
- Double bed with interior sprung mattress
- Drawer(s) under bed
- Feature windows with opening portholes

- Full-height standing headroom
- Full length mirror
- Full set of Heirlooms fine bed linen (includes pillows and duvet)
- Gold bullion Venetian blinds
- LED ceiling lights
- Reading lights
- Twin bedside tables
- Upholstered bedhead
- Vanity unit/bureau with chair
- Wardrobe with cedar linings

Master Head

- 220V/240V shaving point
- Automatic shower tray pump-out system
- Avonite® vanity unit with locker and twin basins with hot and cold pressurized water
- Electric silent-flush freshwater toilet
- Extractor fan
- Feature windows with opening portholes
- Full set of bathroom fittings
- Full standing height shower with hinged door
- Glass partition with timber venetian blinds to match bulkheads
- Gold bullion venetian blinds
- LED ceiling lights
- Lockers (overhead)
- Mirror
- Random teak floor
- Towel rail
- Towel set

Forward Stateroom

- Bedside stowage
- Double bed with interior sprung mattress
- Feature windows with opening portholes
- Full-height standing headroom
- Full length mirror
- Full set of Heirlooms fine bed linen (includes pillows and duvet)
- Gold bullion venetian blinds
- LED ceiling lights
- Large hatch with fly-screen and concealed blinds to foredeck
- Reading lights

- Skylight with electric blinds
- Upholstered bedhead
- Wardrobe(s)

Starboard Guest Stateroom

- Bedside stowage
- Drawer(s) under bed
- Feature windows with opening porthole
- Full length berths x2 with high-comfort interior sprung mattresses
- Full length mirror
- Full set of Heirlooms fine bed linen (includes pillows and duvet)
- Gold bullion Venetian blinds
- Hanging locker with mirror
- LED ceiling lights
- Lockers (mid-level)
- Reading lights
- Wardrobe with cedar linings

Helm

- 12V socket
- Access to deck via side door
- Adjustable/tilt steering wheel
- Bilge pump switches with integral operating warning lights and audible alarms
- Bow thruster controls
- Chart table and light
- Controls for engine bay fire extinguisher system
- Drinks holders
- Electronic single-lever throttle and gear controls for port and starboard engines
- Foghorn with siren and loudhailer facility
- Fuel gauges
- Full engine instrumentation including; tachometers, oil pressure gauges, temperature gauges, battery condition indicators, audible alarms and engine hour meters
- Garmin GHP 10 autopilot system with color display
- Garmin GMI 10 digital multi-function instrument system with color display
- Garmin GMR 504 Open Array Radar (4ft, 4kW)
- Garmin GPS 17x Antenna
- Garmin GPS 5012 (12") dual Display
- Garmin VHF 300i marine radio
- KVH M-7 Tracvision Sat TV System
- Helm position indicator

- High speed magnetic compass
- Mood lighting
- Powered steering
- Random teak floor
- Red night-light illumination to helm
- Remote anchor winch controls
- Searchlight controls
- Seat base stowage
- Trim tab controls
- Twin independent helm and co-pilot seats

Engines

- Access through cockpit hatch
- Aerodynamically designed engine air intakes
- Automatic bilge pumps for forward bilge, engine bay and rudder bay with manual 'on' override
- Automatic engine bay fire extinguisher system with warnings at both helms
- Bow thruster
- Dripless shaft seals
- Electric engine bay fan(s)
- Electric trim tabs with cathodic protection
- Engine bay lights
- Engine room soundproofing
- Exhaust overheat warning system
- High capacity emergency manual bilge pump system with changeover valves
- High corrosion-resistant TEMET shafts
- Manganese bronze 'P' brackets
- Manganese bronze propellers contra-rotating
- Seacocks on all inlets/outlets below waterline

Flybridge

- 12V heavy duty weatherproof socket
- Adjustable/tilt steering wheel
- Adjustable bolstered helm seating
- Bilge pump switches with integral operating warning lights and audible alarms
- Bow thruster controls
- Chaise Longue on port and starboard side with adjustable backrest
- Companion seating to helm
- Day beds
- Dedicated dining seating with large dining table

- Drinks holders
- Echo-sounder and speedometer/distance log repeater(s) with sea water temperature read out
- Electronic single-lever throttle and gear controls for port and starboard engines
- Ensign and staff
- FAIRLINE EDITION durable dinner service, ideal for outdoor use, white melamine with Fairline Shield (24-piece, 6 place settings)
- FAIRLINE EDITION durable tumblers, produced in shatter-proof polycarbonate, with Fairline Shield (set of 6)
- Flybridge access hatch
- Flybridge bar with refrigerator, icemaker, sink and electric griddle
- Furniture covers
- Helm position indicator
- High speed magnetic compass
- Instrument covers
- Large sunbathing area forward of helm position with non-absorbent foam-filled cushions
- MP3 connector with 100w amplifier
- Molded non-slip deck surface
- Powered steering
- Radar arch/mast
- Remote anchor winch controls
- Remote control searchlight with controls at both helm stations
- Repeat autopilot controls
- Repeat flybridge engine instrumentation, controls and electronics
- Stainless steel handrails
- Storage unit housing waste bin
- Teak laid oversize flybridge steps
- Teak table
- Trim tab controls
- VHF radio incorporating intercom
- Waterproof speakers
- Wind-deflecting screen with grab rail
- Garmin GPS 5012 (12") dual Display

Aft Cockpit

- 3 stage opening aft door
- 12V heavy duty weatherproof socket
- Access hatch to engine room and lazarette
- Access hatch to optional aft crew cabin
- Aft cockpit enclosure covers
- Bathing platform lights
- Blue LED lighting to cockpit

- Boat hook
- Flybridge access hatch
- Life raft stowage
- Manual bilge pump(s)
- Mooring warps
- Overhead handrail
- Teak laid floor throughout self-draining cockpit
- Teak table with 2 folding chairs
- Warp lockers
- White cockpit overhead lights

Deck

- Anchor chain locker
- Anchor winch controls
- Calibrated anchor chain
- Deck wash outlets
- External covers to windscreen
- Fender set
- Fender stowage
- Full set of IMCO navigation lights
- Hot and cold water transom shower
- Molded non-slip deck surface
- Recessed self-draining area on foredeck for coach-roof sun cushions
- 'Reticulated' non-absorbent foam cushions for forward sundeck
- Riding light
- Rigid swim ladder to bathing platform
- Rubbing strake
- Stainless steel bow, spring and stern cleats
- Stainless steel bow fairlead(s)
- Stainless steel grab rail(s) on each transom wing
- Stainless steel handrails
- Stainless steel pulpit
- Starboard side access door
- Teak laid bathing platform
- Transom gate from cockpit to hi/lo bathing platform
- Twin horns
- Water filler(s)
- Windscreen washers

Hull Form and Construction

- All gel coat and glass fibre hand laid with unidirectional, biaxial and woven rovings
- Antifouling protection to hull
- Bow thruster
- Deep 'V' forward; 18° deadrise aft
- Design, layout and detailing by the Fairline Design Team. Naval architecture and structural engineering by Bernard Olesinski
- Fire extinguisher
- Full length molded spray deflectors
- Holding tank(s) with electric pump
- Hull/deck join bolted and bonded
- Hydraulic hi/lo bathing platform for tender launching and recovery
- Integrally molded engine bearers
- Isophthalic gel coat backed by isophthalic resin-rich powder-bound glass mat
- The deck incorporates polyurethane foam cores for high strength and excellent thermal insulation
- The propellers are set in semi-tunnels enabling the engines to be located further aft, also reducing draught and improving efficiency by reducing the shaft angle
- Thermal insulation to forward cabin and upper deck roof space
- Transverse frames and longitudinal stringers throughout hull

Disclaimer

The Company offers the details of this vessel in good faith but cannot guarantee or warrant the accuracy of this information nor warrant the condition of the vessel. A buyer should instruct his agents, or his surveyors, to investigate such details as the buyer desires validated. This vessel is offered subject to prior sale, price change, or withdrawal without notice.

Mechanical Disclaimer Engine and generator hours are as of the date of the original listing and are a representation of what the listing broker is told by the owner and/or actual reading of the engine hour meters. The broker cannot guarantee the true hours. It is the responsibility of the purchaser and/or his agent to verify engine hours, warranties implied or otherwise and major overhauls as well as all other representations noted on the listing.

Исключения

При продаже яхты исключаются личные вещи владельца.

Отказ от ответственности

Компания предоставляет описание судна или яхты добросовестно, но не может гарантировать точность этой информации, а также не ручается за техническое состояние. Покупатель должен проинструктировать своих агентов или оценщиков

исследовать представленную информацию более подробно, по собственному желанию. Продажа судна или яхты, изменение цены или снятие с продажи будет происходить без предварительного уведомления.

ФОТОГРАФИИ

Fairline 65 Squadron 2013 - Salon



Fairline 65 Squadron 2013 - Salon



Fairline 65 Squadron 2013 - Galley



Fairline 65 Squadron 2013 - Galley



Fairline 65 Squadron 2013 - Galley



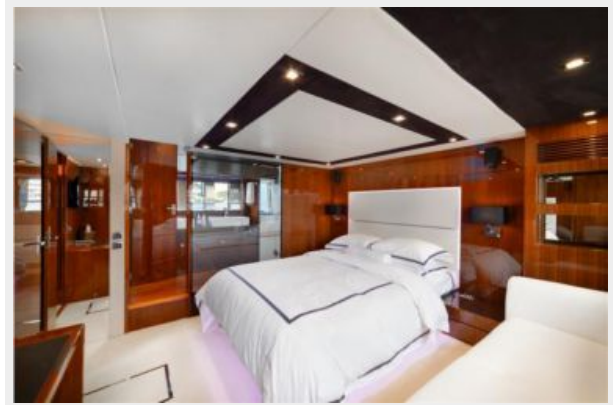
Fairline 65 Squadron 2013 - Companionway



Fairline 65 Squadron 2013 - Master Stateroom



Fairline 65 Squadron 2013 - Master Stateroom



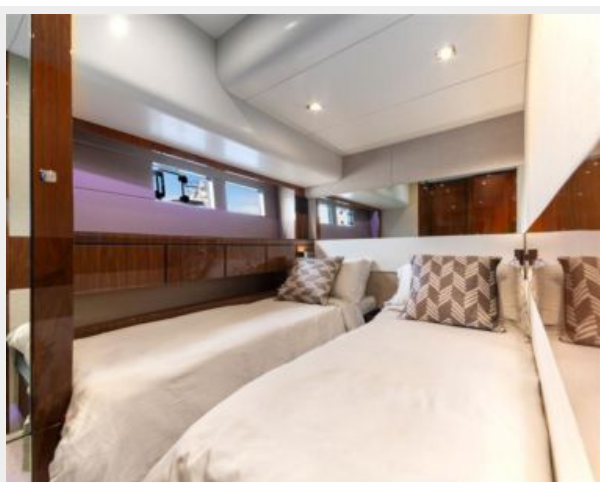
Fairline 65 Squadron 2013 - Master Stateroom



Fairline 65 Squadron 2013 - Master Stateroom Head



Fairline 65 Squadron 2013 - Guest Stateroom



Fairline 65 Squadron 2013 - Guest Head



Fairline 65 Squadron 2013 - Guest Stateroom



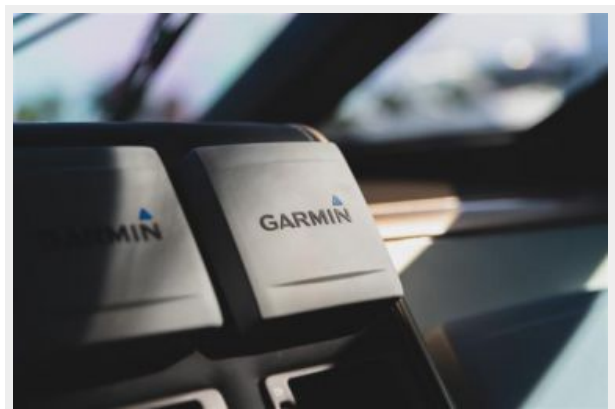
Fairline 65 Squadron 2013 - Helm



Fairline 65 Squadron 2013 - Helm



rFairline 65 Squadron 2013 - Electronics



Fairline 65 Squadron 2013 - Entertainment System



Fairline 65 Squadron 2013 - Cockpit



Fairline 65 Squadron 2013 - Transom

Fairline 65 Squadron 2013 - Cockpit



Fairline 65 Squadron 2013 - Flybridge



Fairline 65 Squadron 2013 - Flybridge Helm



Fairline 65 Squadron 2013 - Flybridge



Fairline 65 Squadron 2013 - Flybridge



Fairline 65 Squadron 2013 - Bow



Fairline 65 Squadron 2013 - Walk-Around



Fairline 65 Squadron 2013 - Foredeck



Fairline 65 Squadron 2013 - Fairline Logo



Fairline 65 Squadron 2013 - Logo



Fairline 65 Squadron 2013 - Profile



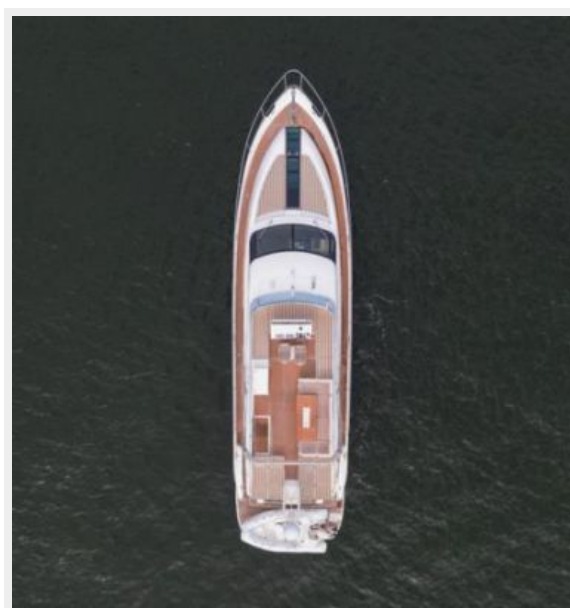
Fairline 65 Squadron 2013 - Profile



Fairline 65 Squadron 2013 - Profile



Fairline 65 Squadron 2013 - Profile



КОНТАКТЫ

Андрей Шестаков (Andrey Shestakov) – ведущий яхтенный брокер отдела продаж яхт и судов компании Shestakov Yacht Sales Inc. Официальный представитель Shestakov Yacht Sales Inc. для русскоговорящих клиентов в центральном офисе компании в Майами/Форт Лодердейл/Флорида/США.

Контактная информация

Email: andrey@shestakovyachtsales.com

Web: shestakovyachtsales.com

Телефоны

Краснодарский край: **+7(918)465-66-44**

США, Майами, Флорида: **+1(954)274-4435**

Время работы

Понедельник – Суббота: **9:00 - 21:00**
EDT

Воскресенье: **Закрето**

Адрес



Harbour Towne Marina, 850 NE 3rd St,
STE 213, Dania, FL 33004