

## YONDER — SEAWIND CATAMARANS



**Builder:** SEAWIND CATAMARANS

**Year Built:** 2000

**Model:** Catamaran

**Price:** PRICE ON APPLICATION

**Location:** United States

**LOA:** 32' 10" (10.01m)

**Beam:** 19' 6" (5.94m)

**Min Draft:** 3' 2" (0.97m)

Our experienced yacht broker, Andrey Shestakov, will help you choose and buy a yacht that best suits your needs **Yonder — SEAWIND CATAMARANS** from our catalogue. Presently, at Shestakov Yacht Sales Inc., we have a wide variety of yachts available on our sale's list. We also work in close contact with all the big yacht manufacturers from all over the world.

If you would like to buy a yacht **Yonder — SEAWIND CATAMARANS** or would like help answering any questions concerning purchasing, selling or chartering a yacht, please call **+1(954)274-4435**

---

# TABLE OF CONTENTS

---

TABLE OF CONTENTS	2
SPECIFICATIONS	3
Overview	3
Basic Information	4
Dimensions	4
Speed, Capacities and Weight	4
Accommodations	5
Hull and Deck Information	5
Engine Information	5
PHOTOS	6
CONTACTS	16
Contact details	16
Telephones	16
Office hours	16
Address	16

# SPECIFICATIONS

## Overview

**The Australian-built Seawind catamaran is far superior in quality to other cats in this size and price range. For her size and price, she offers tremendous value.** Her newer sistership just won the "Best Multihull" award from Cruising World Magazine's Boat of the Year judges, and for good reason. The systems on this boat are very easy to work on, the layout is innovative, and the performance is excellent.

Imagine sitting on the spacious bridge deck gazing at the stars while anchored on the Bahama Banks! This boat was made for sunsets and warm breezes. Come see her and let your imagination go! Recent survey available, many items updated including the following:

- **All new (2018) standing rigging by Mack Sails**
- **Featured in book "A Sailing Odyssey-Malaysia to the Mediterranean"**
- **Swim ladder extending from bow makes adventuring easy!**
- **Set up for being off the dock! Solar!**
- **New ATN trampolines**
- **New black water system**
- **New Rocna anchor**
- **US documented with FL registration.**
- **Raymarine EV-200 autopilot with ACU-200 control unit and P70 control head**
- **Raymarine C-120 chartplotter/ radar**
- **Raymarine ST60 wind speed & direction**
- **Raymarine P-70 depth sounder**
- **GME GR966 VHF radio**
- **405 W solar power**
- **Xantrex Prowatt SW2000 inverter**
- **2 2009 Yamaha high thrust 9.9hp engines**
- **Electric head**
- **Sails: Full batten main, jib, code 0, spinnaker, spare main**
- **Optional Avon 10' RIB with Torqeedo 1003**

Boat Name Yonder Specs Designer: Richard Ward Dimensions LOA: 32 ft 10 in Beam: 19 ft 6 in Maximum Draft: 3 ft 2 in Displacement: 8818 lbs Engines Engine 1: Engine Brand: Yamaha Year Built: 2009 Engine Model: 9.9 Engine Type: Outboard Engine/Fuel Type: Gas/Petrol Engine Power: 9 HP Engine 2: Engine Brand: Yamaha Year Built: 2009 Engine Model: 9.9 Engine Type: Outboard Engine/Fuel Type: Gas/Petrol Engine Power: 9 HP Tanks Fresh Water Tanks: (106 Gallons) Fuel Tanks: Aluminum (32 Gallons) Accommodations Number of single berths: 2 Number of double berths: 2 Number of cabins: 3 Number of heads: 1 Electronics Plotter Depthsounder VHF Log-speedometer Navigation center GPS Autopilot Wind speed and direction Sails Fully battened mainsail Furling genoa Inside Equipment Deep freezer Refrigerator Electric head Electrical Equipment Shore power inlet Outside Equipment/Extras

Solar panel Tender Davits Cockpit cushions Teak cockpit Swimming ladder

### Accomodations

This boat is just as comfortable on the interior as she is on deck! Her bridge deck/cockpit features a large salon table, where you will probably spend most of your time. It seats 8 comfortably! This way you can be out of the elements but in the open as well, talking with the person on watch or enjoying the scenery!

Entering the starboard hull, there is a double berth aft, a gallery centerline with generous storage and a very large refrigerator and freezer. Forward of the galley is a small dinette and a second v-berth arrangement.

The port hull features the master's cabin, with a large double berth, a generous navigation station/office to forward, and a large head to aft.

You will forget that this is only a 33' boat!

## Basic Information

---

**Category:** Catamaran

**Sub Category:** Cruising Sailboat

**Model Year:** 2000

**Year Built:** 2000

**Country:** United States

## Dimensions

---

**LOA:** 32' 10" (10.01m)

**Beam:** 19' 6" (5.94m)

**Min Draft:** 3' 2" (0.97m)

## Speed, Capacities and Weight

---

**Displacement:** 8818 Pounds

**Water Capacity:** 106 Gallons

**Fuel Capacity:** 32 Gallons

---

## Accommodations

---

**Total Cabins:** 3

**Total Berths:** 4

**Total Heads:** 1

---

## Hull and Deck Information

---

**Hull Material:** Fiberglass

---

## Engine Information

---

**Engines:** 2

**Manufacturer:** Yamaha

**Model:** 9.9

**Engine Type:** Outboard

**Fuel Type:** Gas/Petrol

# PHOTOS





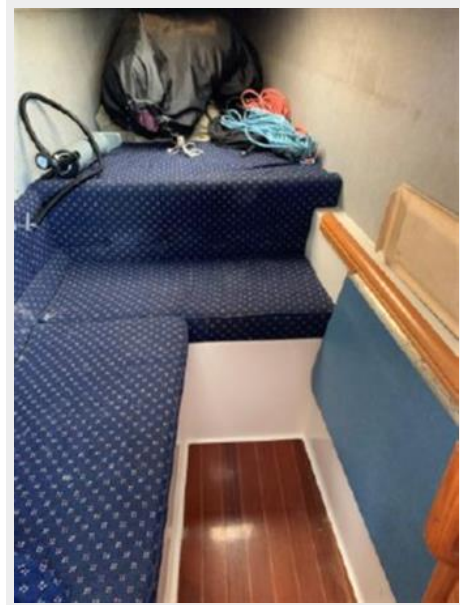
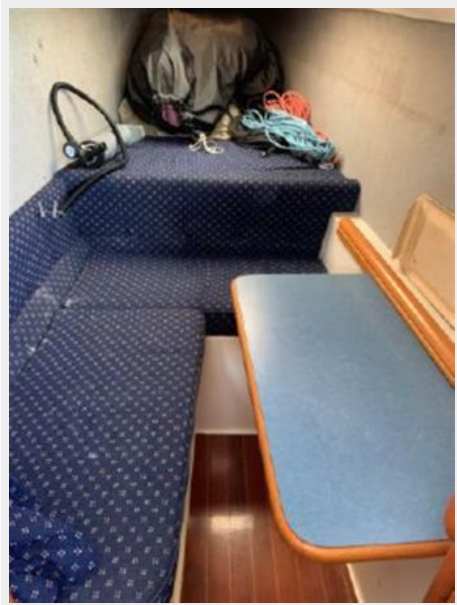




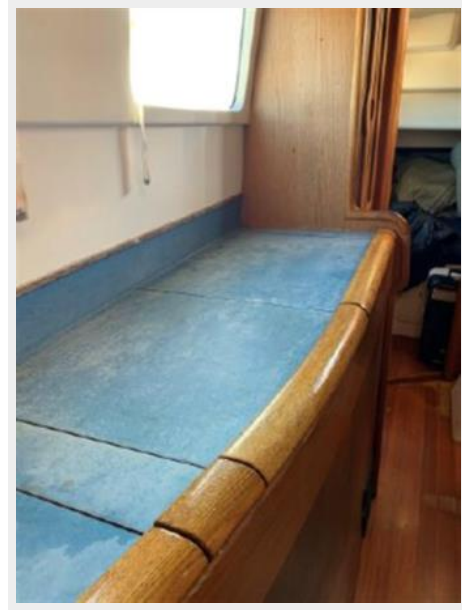


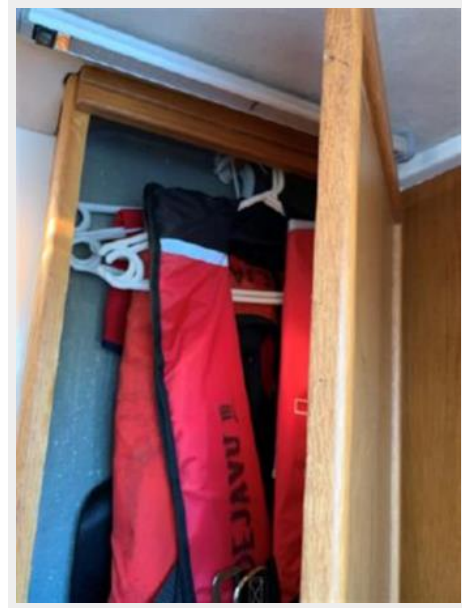








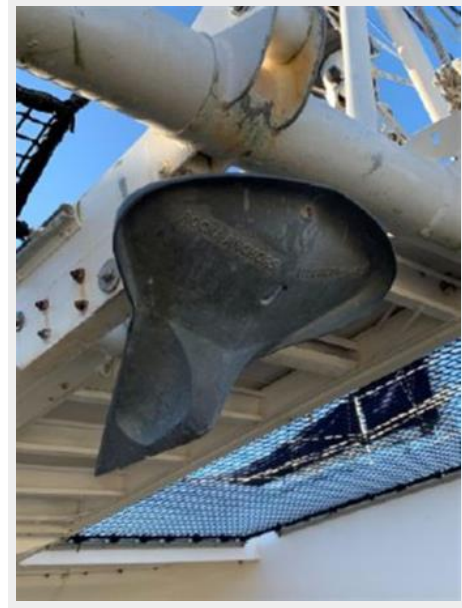












# CONTACTS

---

Andrey Shestakov, leading yacht broker of the sales department of Shestakov Yacht Sales Inc. Shestakov Yacht Sales Inc., the official representative of the Miami/Fort Lauderdale FL headquarters.

## Contact details

---

Email: [andrey@shestakovyachtsales.com](mailto:andrey@shestakovyachtsales.com)

Web: [shestakovyachtsales.com/en/](http://shestakovyachtsales.com/en/)

## Telephones

---

USA: +1(954)274-4435

## Office hours

---

Monday – Saturday: **9:00 - 21:00** EDT

Sunday: **closed**

## Address

---



Harbour Towne Marina, 850 NE 3rd St,  
STE 213, Dania, FL 33004