

SANDALWOOD — GRAND BANKS



Builder: GRAND BANKS

Year Built: 2001

Model: Trawler

Price: PRICE ON APPLICATION

Location: United States

LOA: 45' 5" (13.84m)

Beam: 14' 1" (4.29m)

Min Draft: 4' 0" (1.22m)

Max Draft: 4' 2" (1.27m)

Cruise Speed: 15 Kts. (17 MPH)

Our experienced yacht broker, Andrey Shestakov, will help you choose and buy a yacht that best suits your needs **Sandalwood — GRAND BANKS** from our catalogue. Presently, at Shestakov Yacht Sales Inc., we have a wide variety of yachts available on our sale's list. We also work in close contact with all the big yacht manufacturers from all over the world.

If you would like to buy a yacht **Sandalwood — GRAND BANKS** or would like help answering any questions concerning purchasing, selling or chartering a yacht, please call **+1(954)274-4435**

TABLE OF CONTENTS

TABLE OF CONTENTS	2
SPECIFICATIONS	4
Overview	4
Basic Information	4
Dimensions	4
Speed, Capacities and Weight	4
Accommodations	5
Hull and Deck Information	5
Engine Information	5
DETAILED INFORMATION	6
Equipment	6
Mechanical & Electrical System	7
Galley	7
Owners Stateroom	8
Head	8
Guest Cabin	8
Transmissions	9
Upgrades	9
Exclusions	9
Disclaimer	9
PHOTOS	10
Sandalwood - 13_DSC2689CC Fox -adj_1	10
Sandalwood - 14_DSC2691CC Fox -adj_1	10
Sandalwood - 15_DSC2704CC Fox -adj_1	10
Sandalwood - 16_DSC2711CC Fox -adj_1	10
Sandalwood - 17_DSC2681-EditCC Fox -adj_1	11
Sandalwood - 18_DSC2730CC Fox -adj_1	11
Sandalwood - 20_DSC2850CC Fox -adj_1	11

Sandalwood - 19_DSC2846CC Fox -adj_1	11
Sandalwood - 21_DSC2844CC Fox -adj_1	12
Sandalwood - 24_DSC2750CC Fox -adj_1 (1)	12
Sandalwood - 26_DSC2785CC Fox -adj_1	12
Sandalwood - 25_DSC2758CC Fox -adj_1	12
Sandalwood - 27_DSC2781CC Fox -adj_1	13
Sandalwood - 29_DSC2810CC Fox -adj_1	13
Sandalwood - 30_DSC2884CC Fox -adj_1	13
Sandalwood - 31_DSC2808CC Fox -adj_1	13
Sandalwood - 33_DSC2881CC Fox -adj_1	13
Sandalwood - 34_DSC2792CC Fox -adj_1	13
Sandalwood - 37_DSC2802CC Fox -adj_1	14
Sandalwood - 38_DSC2812CC Fox -adj_1	14
Sandalwood - 39_DSC2815CC Fox -adj_1	14
Sandalwood - 41_DSC2820CC Fox -adj_1	14
Sandalwood - 44_DSC2826CC Fox -adj_1	14
CONTACTS	15
Contact details	15
Telephones	15
Office hours	15
Address	15

SPECIFICATIONS

Overview

Sandalwood is one of the finest GB Europas Oxford Yacht Agency had imported and sold and serviced. She has excellent and preferred Cummins 6BT Diesel Engines, Aqua Drive, Northern lights generator. A custom battery system was installed by Oxford Yacht Agency in 2001 and kept up to date with the latest Xantrec Inverter System. Sandalwood's layout is preferred design with Island bed fwd, guest stateroom for a couple and a child, desk or 3 children, Helm seat, entertainment cabinet and spaces for chairs.

Basic Information

Category: Trawler

Sub Category: Europa

Model Year: 2001

Year Built: 2001

Country: United States

Vessel Top: Bimini Top

Fly Bridge: Yes

Dimensions

LOA: 45' 5" (13.84m)

LWL: 41' 0" (12.50m)

LOD: 43' 3" (13.18m)

Beam: 14' 1" (4.29m)

Min Draft: 4' 0" (1.22m)

Max Draft: 4' 2" (1.27m)

Speed, Capacities and Weight

Cruise Speed: 15 Kts. (17 MPH)

Displacement: 34000 Pounds

Gross Tonnage: 20 Pounds

Water Capacity: 278 Gallons

Holding Tank: 28 Gallons

Fuel Capacity: 600 Gallons

Accommodations

Total Cabins: 2

Total Berths: 4

Sleeps: 4

Total Heads: 1

Hull and Deck Information

Hull Material: Fiberglass

Deck Material: Teak

Hull Color: White

Hull Finish: Aluminum

Hull Designer: Kenneth Smith

Exterior Designer: Grand Banks

Interior Designer: Dick Loh

Engine Information

Engines: 2

Manufacturer: Cummins

Model: 6CTA.8.3-MS

Engine Type: Inboard

Fuel Type: Diesel

DETAILED INFORMATION

Equipment

4 Aft facing cameras read through Garmin Plotters

AIS with separate GPS and AIS antenna

ACR 75 Searchlight

Nico Fico Solar vent in head

Fire Suppression system

Directv KVH TV 5

2nd Carbon Monoxide detector apt off the engine room

Nova Kool Custom Large Capacity Top Loading refrigerator/freezer

Sub-zero Refrigerator 110v

ACR Epirb

Richie Compass added at lower helm

Garmin 7612 Chart Plotter/GPS (4)

Garmin Open Array High Def Radar

Garmin GXM 51 weather/XM receiver

Garmin GSD-22 Remote sounder

Glomex TV antenna for local channels

RD30 Furuno Depth & Smart sensor

2 VHF Radios

Curtains

Blinds

(2) Salon chairs

TV cabinet w/tv

Fusion stereo

Fwd window covers

Mechanical & Electrical System

50 amp fwd/aft w/Glenining bucket 4 feed

8kw Northern lights M753K

3kw Xantrex Freedom SW 3000 w/remote

Surge suppressor and battery flow divider

12v DC via 4 Recision 360 amp 6v deep cycle

Professional Mariner voltage meter and charging dial

Blue seas battery charge alarm

Marine Air reverse cycle

Bennett trim tabs with trim tab plane position indicators, extra large system

Sea water and fresh water washdowns on foredeck

Racor fuel filters

Hot and cold water shower in cockpit

Oil change system for engines and generator

Three 12-volt windshield wipers with washers

Fireboy/Xintex CMD-3M carbon monoxide detector in forward stateroom, Certified for 2019

Sharp Carousel microwave oven

Promariner battery voltage monitor

Lofrans Tigres bi-directional with remotes

Marine Air Systems (two units with digital controls)

Galley

Double Corian Sink

Electric cook top and propane stove w/2 gas bottles and 2 sensor safety switch

Owners Stateroom

Queen size Island bed with drawers beneath and storage at head and on either side

Teak cabinetry throughout including batten on hull sides

4 Drawer Bureau

Cedar lined hanging locker

Beveled changing mirror

Teak and Holly Cabin Sole

Head

Vacuflush toilet

Tankwatch 4

Cultured marble countertops and sink

Large shower with Grohe shower head, teak floor grate, teak shelving, clear Lexan accordian door

Teak cabinetry, teak and holly cabin sole

1 opening hatch

1 opening port

Guest Cabin

Double berth

Cedar lined Hanging locker

Bureau with two drawers and cabinet beneath

Two opening Ports

One opening hatch overhead

Teak cabinetry and teak and holly cabin sole upgraded w/extra shelves, desk convertible to a berth

Transmissions

Z F 301 P.2 2.7:1

Aqua Drive System "Sea Drive" 20680 Coupling

Shaft Seal: Duramax

Propellor: CJR 28x24x4

Shaft Aquamet: 22 2"x135

Upgrades

Dickerson/Harken dinghy "boom lift"

Avon 340 w/2018 Yamaha Electric Start 15HD

Cover for dinghy

Flybridge cover

(2) Alibert 4 position chairs & table

Exclusions

Owner's personal belongings.

Disclaimer

The Company offers the details of this vessel or yacht in good faith but cannot guarantee or warrant the accuracy of this information nor warrant the condition of the vessel. A buyer should instruct his representatives, agents, or his surveyors, to investigate such details as the buyer desires validated. This vessel or yacht is offered subject to prior sale, price change, or withdrawal without notice.

PHOTOS

Sandalwood - 13_DSC2689CC Fox -adj_1



Sandalwood - 14_DSC2691CC Fox -adj_1



Sandalwood - 15_DSC2704CC Fox -adj_1



Sandalwood - 16_DSC2711CC Fox -adj_1



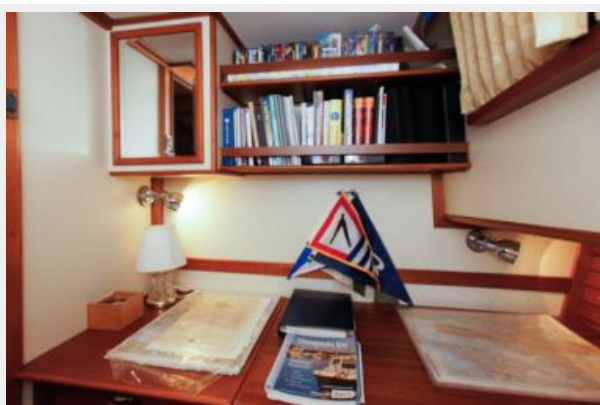
**Sandalwood - 17_DSC2681-EditCC Fox -
adj_1**



Sandalwood - 18_DSC2730CC Fox -adj_1



Sandalwood - 19_DSC2846CC Fox -adj_1



Sandalwood - 21_DSC2844CC Fox -adj_1



Sandalwood - 24_DSC2750CC Fox -adj_1 (1)



Sandalwood - 26_DSC2785CC Fox -adj_1

Sandalwood - 25_DSC2758CC Fox -adj_1



Sandalwood - 27_DSC2781CC Fox -adj_1



Sandalwood - 29_DSC2810CC Fox -adj_1



Sandalwood - 30_DSC2884CC Fox -adj_1



Sandalwood - 31_DSC2808CC Fox -adj_1



Sandalwood - 33_DSC2881CC Fox -adj_1



Sandalwood - 34_DSC2792CC Fox -adj_1



Sandalwood - 37_DSC2802CC Fox -adj_1



Sandalwood - 38_DSC2812CC Fox -adj_1



Sandalwood - 39_DSC2815CC Fox -adj_1



Sandalwood - 41_DSC2820CC Fox -adj_1



Sandalwood - 44_DSC2826CC Fox -adj_1



CONTACTS

Andrey Shestakov, leading yacht broker of the sales department of Shestakov Yacht Sales Inc. Shestakov Yacht Sales Inc., the official representative of the Miami/Fort Lauderdale FL headquarters.

Contact details

Email: andrey@shestakovyachtsales.com

Web: shestakovyachtsales.com/en/

Telephones

USA: +1(954)274-4435

Office hours

Monday – Saturday: **9:00 - 21:00** EDT

Sunday: **closed**

Address



Harbour Towne Marina, 850 NE 3rd St,
STE 213, Dania, FL 33004