

## TORTUGA VERDE — CATALINA



**Builder:** CATALINA

**Year Built:** 1988

**Model:** Cruising Sailboat

**Price:** PRICE ON APPLICATION

**Location:** United States

**LOA:** 36' 0" (10.97m)

**Beam:** 12' 0" (3.66m)

**Max Draft:** 4' 2" (1.27m)

Our experienced yacht broker, Andrey Shestakov, will help you choose and buy a yacht that best suits your needs **Tortuga Verde — CATALINA** from our catalogue. Presently, at Shestakov Yacht Sales Inc., we have a wide variety of yachts available on our sale's list. We also work in close contact with all the big yacht manufacturers from all over the world.

If you would like to buy a yacht **Tortuga Verde — CATALINA** or would like help answering any questions concerning purchasing, selling or chartering a yacht, please call **+1(954)274-4435**

---

# TABLE OF CONTENTS

---

TABLE OF CONTENTS	2
SPECIFICATIONS	3
Overview	3
Basic Information	11
Dimensions	11
Speed, Capacities and Weight	11
Accommodations	11
Hull and Deck Information	12
Engine Information	12
PHOTOS	13
CONTACTS	19
Contact details	19
Telephones	19
Office hours	19
Address	19

---

# SPECIFICATIONS

---

## Overview

---

### Highly Customized, Beautiful Catalina 36

**Tortuga Verde** is a very special, highly customized Catalina 36. Her knowledgeable and attentive owner has completed a long list of well thought out upgrades over the past several years. She has been converted to a cutter rig with a removable inner forestay that allows an optional staysail to be flown in heavy weather. Her beautiful canvas, two large staterooms, spacious galley, enormous head and custom davits make this a very desirable, turn key vessel. She is equipped with a shoal draft 4'2" wing Keel.

Take a look at the full specs for complete details.

### Highlights Include:

- **48' 6" Custom Mast height- Perfect for the Gulf Coast!**
- Removable Inner Forestay with Staysail to Rig As A Cutter
- B&G Vulcan 9" Touchscreen plotter w/ Wind and Depth (NEW 2018)
- Autopilot, Radar, SSB, and multiple VHF's
- 16,500 BTU Air Conditioning (NEW 2018)
- Mast and Boom Awlgripped and Rewired w/ All New Running Rigging (NEW 2018)
- Custom Arch with Davits, Wind Gen, Solar and Radar.
- Full Cockpit Canvas in Very Good Condition
- Backpack Mainsail storage (NEW 2018)
- Asymmetrical Spinnaker w/ Sock
- Beautiful Green Hull

Boat Name Tortuga Verde Specs Keel: Wing Dimensions LOA: 36 ft 0 in Beam: 12 ft 0 in Maximum Draft: 4 ft 2 in Displacement: 14100 lbs Bridge Clearance: 48 ft 6 in Engines Engine 1: Engine Brand: Universal Year Built: 1999 Engine Model: M25XPB Engine/Fuel Type: Diesel Engine Hours: 4077 Drive Type: Direct Drive Tanks Fresh Water Tanks: (70 Gallons) Fuel Tanks: (32 Gallons) Accommodations Number of cabins: 2 Number of heads: 1

### Full Specs

## ACCOMMODATIONS

The Catalina 36 offers unparalleled comfort in a 36' space. Entertain your family and friends in the spacious cushioned cockpit with folding teak table. Down below offers plenty of space

around the U-shaped dinette and leather cushioned settee with custom folding table. Opposite from the dinette are two additional cushioned seats and a center coffee table. Excellent 6'5" headroom in the salon. Sleeps 4 in 2 private cabins and 2-3 more on convertible salon settees. She features fantastic ventilation the many upgraded stainless steel ports and overhead hatches, 2 dorades and 3 12v fans.

- 16,500 BTU Webasto Air Conditioning with Soft Start. Can be run off Honda 2200w portable generator (NEW 2018- Generator not included)
- Spacious cushioned cockpit
- Cockpit teak folding table
- 6' 5" interior headroom
- Beautiful teak interior
- Salon U-shaped settee with green leather cushions
- Custom folding teak table serves salon U-shaped settee
- Salon double green leather cushioned seats aside table
- Forward private master cabin with v-berth custom innerspring mattress
- Aft private guest cabin with queen berth and settee
- Private head with wand shower, vanity, shower seat, marine head
- Shower sump system (NEW 2018)
- Manual Jabsco Head (NEW 2018)
- Plenty of fresh air ventilation flows through salon and cabins
- Stainless steel ports and overhead hatches
- Two dorades
- Three 12 volt cabin fans
- All LED and fluorescent lighting

## GALLEY

Fully equipped U-shaped galley every gourmet chef or casual cook will enjoy. The efficient Frigoboat refrigeration works wonderfully. Propane stove and ample storage for non perishables to keep your sailors well fed along any cruise.

- U-shaped galley with plenty of countertop work space
- Frigoboat refrigerator with compressor and thru-hull keel cooler (NEW evaporator 2018)
- Seaward propane gimballed 2 burner range and oven
- Sharp half pint microwave
- Double stainless steel sinks
- Hot/cold freshwater
- Manual salt/fresh water at galley sink
- PUR 5 gallon watermaker (currently pickled, cannot test operation)
- 5 gallon propane tank and spare tank with remote solenoid
- Large capacity of dry storage for nonperishable food, cookware
- Magma BBQ (NEW 2017)

## **ELECTRONICS:**

### **COCKPIT HELM:**

- B&G Vulcan V9 GPS/MFD (NEW 2018)
- B&G Wind and Depth displayed on MFD (NEW 2018)
- 8" Ritchie compass
- Standard Horizon handheld VHF radio

## NAVIGATION STATION:

- SITEX T-150 12 mile range radar with closed array dome
- Garmin 72 handheld GPS
- SEA 235 single side band radio
- SEA 156 VHF radio
- Ritchie 4" compass at chart table
- EPIRB with current registration
- ACR EPIRB (NEW 2017)

## ENTERTAINMENT ELECTRONICS:

- SONY AM/FM radio with speakers in cabin and cockpit

## SAILS AND RIGGING

This unique cutter rigged Catalina 36 with lower mast height (48' 6" rather than standard 50') and a removable inner forestay offers plenty of sail area and additional cruising flexibility to explore intracoastal waterways, canals, inland bays and rivers with lower bridge clearance.

- Mast and boom unstepped, and refurbished with Awlgrip Paint (NEW 2018)
- Stackpack mainsail storage system (NEW 2018)
- All new in mast wiring (NEW 2018)
- Chainplates replaced (NEW 2018)

- Lifelines replaced (NEW 2018)
- All Running rigging and halyards Replaced (NEW 2018)
- Full battened loose footed mainsail
- 135% Genoa with green sun guard on Furlex 2000 roller furler
- 90% Staysail with green sun guard/ Hank on
- Cruising asymmetrical spinnaker w/ sock
- Small anchor steadying sail
- 2 Lewmar 46 2 speed self-tailing primary winches
- 2 Lewmar 40 2 speed self-tailing secondary winches
- 1 Lewmar 30 self-tailing halyard winch
- 1 Lewmar 30 secondary halyard winch
- Standing rigging inspected in 2018, reported to be in very good condition
- Two double line clutches (NEW 2018)

## **ELECTRICAL**

Solid electrical systems built for long range worry-free cruising.

### **DC SYSTEM:**

- Blue Seas 12/120V breaker panel (NEW 2018)
- 4 Grp 31 AGM house batteries
- 2 Grp 24 AGM 90 amp. start batteries
- High Output 90A engine alternator

- Spare 90A alternator
- 100W solar panel
- KISS wind generator
- BlueSea Systems 8248 DC Multimeter voltage monitor
- Charge controller for solar panel and wind generator

## **AC SYSTEM:**

- Xantrex multistage 20 amp battery charger
- SINERGEX pure sine 1500 inverter

## **ENGINE AND MECHANICAL**

- Universal M25XPB diesel fresh water cooled engine, Replaced in 1999 w/ 4,007 hours
- Hurth transmission 2:1 ratio
- Cutlass Bearing (NEW 2018)
- 2 in-line Racor fuel filters
- Dripless thru-hull shaft bearing
- Heat Exchanger, fresh and raw water pumps, thermostat, hoses and gauge senders replaced. (NEW 2018)
- Aluminum 32 gallon fuel tank
- Remote fuel pump and engine fuel pump
- 3 blade bronze propeller 12x15
- 30 gallon fresh water tank in bow
- 25 gallon and 15 gallon fresh water tanks in aft



- 21 gallon holding tank
- PUR watermaker - Not Installed- but conveys with vessel
- Jabsco marine manual head (NEW 2017)
- Hot/cold pressurized water system
- Sea water manual pump to galley sink

## DECK AND HULL

- Bottom painted (NEW 2018)
- Hull waxed (2018)
- Clean, dual tone nonskid deck
- Green hull
- Wing keel with 4' 2" draft
- Double lifelines in stainless steel stanchions (NEW lifelines 2018)
- Stainless steel dorade guards
- Qwik electric anchor windlass with deck controls w/ wireless remote
- Double anchor roller
- 35# CQR anchor on 75' 3/8 chain and 250' nylon rode
- Fortress anchor w/ swivel on 25' 3/8 chain and 150' nylon rode
- Salt water washdown for bow (NEW 2018)
- Green lined canvas bimini with 3/4 cockpit enclosure
- Custom grab handles on dodger frame
- Green full dodger with new isinglass
- Green canvas mainsail cover
- Aluminum mast steps

- Large white canvas sunscreen for bow
- Large green canvas sunscreen for stern
- Forward hatch green canvas cover
- Custom dinghy davit with solar panel and wind generator
- Outboard engine hoist
- Stern folding swim ladder
- Stern seats with cushions (NEW 2018)
- Edson mount for dinghy outboard (NEW 2018)
- (7) Seven new bronze seacocks + thru-hulls (NEW 2018)
- (4) Fixed deadlights with new Lexan (NEW 2018)

#### ITEMS THAT DO NOT CONVEY:

- Dinghy and Outboard motor

#### Brokers Remarks

**Tortuga Verde** is a very special, highly customized Catalina 36. Her knowledgeable and attentive owner has completed a long list of well thought out upgrades over the past several years. She has been converted to a cutter rig with a removable inner forestay that allows an optional staysail to be flown in heavy weather. Her beautiful canvas, two large staterooms, spacious galley, enormous head and custom davits make this a very desirable, turn key vessel. She is equipped with a shoal draft 4'2" wing Keel.

Take a look at the full specs for complete details.

#### Highlights Include:

- **48' 6" Custom Mast height- Perfect for the Gulf Coast!**
- Removable Inner Forestay with Staysail to Rig As A Cutter
- B&G Vulcan 9" Touchscreen plotter w/ Wind and Depth (NEW 2018)
- Autopilot, Radar, SSB, and multiple VHF's

- 16,500 BTU Air Conditioning (NEW 2018)
- Mast and Boom Awlgrippped and Rewired w/ All New Running Rigging (NEW 2018)
- Custom Arch with Davits, Wind Gen, Solar and Radar.
- Full Cockpit Canvas in Very Good Condition
- Stackpack Mainsail storage (NEW 2018)
- Asymmetrical Spinnaker w/ Sock
- Beautiful Green Hull

---

## Basic Information

---

**Category:** Cruising Sailboat

**Model Year:** 1988

**Year Built:** 1988

**Country:** United States

---

## Dimensions

---

**LOA:** 36' 0" (10.97m)

**Beam:** 12' 0" (3.66m)

**Max Draft:** 4' 2" (1.27m)

**Clearance:** 48' 6" (14.78m)

---

## Speed, Capacities and Weight

---

**Displacement:** 14100 Pounds

**Water Capacity:** 70 Gallons

**Fuel Capacity:** 32 Gallons

---

## Accommodations

---

**Total Cabins:** 2

**Total Heads:** 1

---

## Hull and Deck Information

---

**Hull Material:** Fiberglass

---

## Engine Information

---

**Engines:** 1

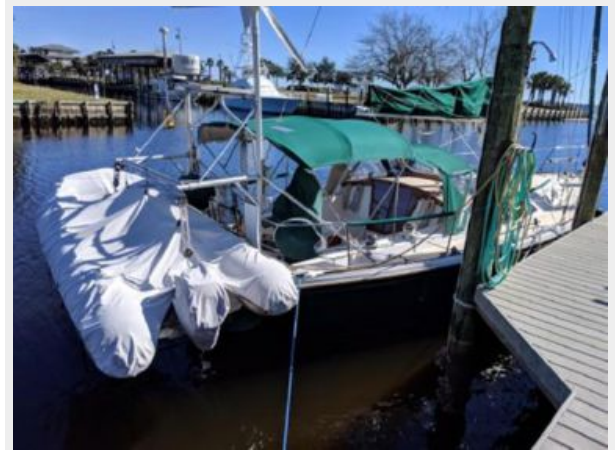
**Manufacturer:** Universal

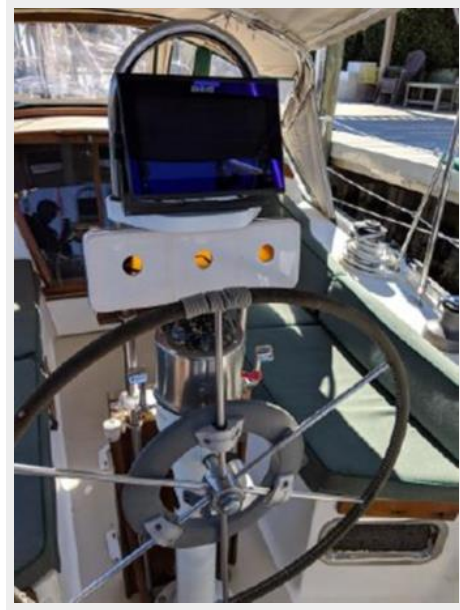
**Model:** M25XPB

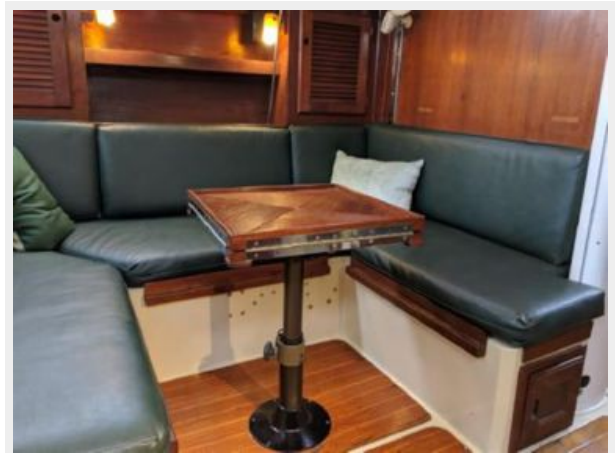
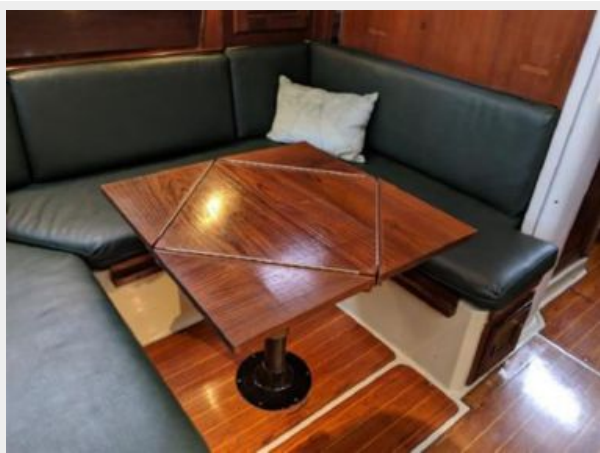
**Engine Type:** Inboard

**Fuel Type:** Diesel

# PHOTOS















# CONTACTS

---

Andrey Shestakov, leading yacht broker of the sales department of Shestakov Yacht Sales Inc. Shestakov Yacht Sales Inc., the official representative of the Miami/Fort Lauderdale FL headquarters.

## Contact details

---

Email: [andrey@shestakovyachtsales.com](mailto:andrey@shestakovyachtsales.com)

Web: [shestakovyachtsales.com/en/](http://shestakovyachtsales.com/en/)

## Telephones

---

USA: +1(954)274-4435

## Office hours

---

Monday – Saturday: **9:00 - 21:00** EDT

Sunday: **closed**

## Address

---



Harbour Towne Marina, 850 NE 3rd St,  
STE 213, Dania, FL 33004