

GOOD GRIEF — ALBIN



Builder: ALBIN

Year Built: 1993

Model: Cruising Yacht

Price: PRICE ON APPLICATION

Location: United States

LOA: 32' 0" (9.75m)

Beam: 12' 3" (3.73m)

Min Draft: 3' 6" (1.07m)

Cruise Speed: 18 Kts. (21 MPH)

Max Speed: 22 Kts. (25 MPH)

Our experienced yacht broker, Andrey Shestakov, will help you choose and buy a yacht that best suits your needs **Good Grief — ALBIN** from our catalogue. Presently, at Shestakov Yacht Sales Inc., we have a wide variety of yachts available on our sale's list. We also work in close contact with all the big yacht manufacturers from all over the world.

If you would like to buy a yacht **Good Grief — ALBIN** or would like help answering any questions concerning purchasing, selling or chartering a yacht, please call **+1(954)274-4435**

TABLE OF CONTENTS

TABLE OF CONTENTS	2
SPECIFICATIONS	5
Overview	5
Basic Information	5
Dimensions	5
Speed, Capacities and Weight	6
Accommodations	6
Hull and Deck Information	6
Engine Information	6
DETAILED INFORMATION	7
Accommodations	7
Mechanical	7
Exclusions	7
Disclaimer	7
PHOTOS	9
good grief stern with bridge	9
Albin2	9
good grief Port Stern	9
DSCN5369	9
DSCN5370	9
DSCN5371	9
DSCN5375	10
DSCN5374	10
DSCN5383	10
DSCN5384	10
DSCN5387	10
DSCN5376	10
DSCN5382	11

DSCN5377	11
DSCN5378	11
IMG_20190106_112359563 (1)	11
DSCN5385	11
DSCN5386	11
DSCN5379	12
IMG_20190106_112703933	12
IMG_20190106_112439496 - Copy (2)	12
IMG_20190106_112538986 - Copy (2)	12
DSCN5388	12
DSCN5389	12
DSCN5390	13
DSCN5391	13
DSCN5392	13
DSCN5394	13
DSCN5395	13
DSCN5396	13
DSCN5397	14
DSCN5398	14
DSCN5400	14
DSCN5401	14
DSCN5403	14
IMG_20181015_120855701_HDR - Copy	14
IMG_20181015_120832785_HDR	15
IMG_20181015_120842911_HDR - Copy (2)	15
IMG_20181015_120738390	15
IMG_20181015_120804379	15
IMG_20181015_160005809_HDR	15
IMG_20181210_082044496_HDR	15

IMG_20190106_112729059	15
IMG_20190106_114403419	15
IMG_20190106_114440746	16
IMG_20190106_115321869	16
IMG_20190106_115426996	16
IMG_20190106_115537645	16
IMG_20190106_115545009	16
IMG_20190106_115608027 - Copy	16
IMG_20190106_115626293	17
CONTACTS	18
Contact details	18
Telephones	18
Office hours	18
Address	18

SPECIFICATIONS

Overview

This is a great vessel for the Fisherman or someone looking to cruise very economically. She will sleep 4 comfortably in the cabin and room for some fisherman in the cockpit and bridge. The mechanic's on the boat are solid, having been rebuilt or new very recent making her safe and ready to go. Caterpillar Platinum warranty remaining until July 2019 on the engine, the ZF V-Drive is new since October 2017. New Cat engine gauge panel.

The Garmin Electronics are new including the Radar and Plotter. The Dingy is a West Marine and only 3 yrs old with a propane outboard motor.

The Viking six person Life raft is also less than two years old.

Reverso Oil Change system for the Motor and Gen Set.

The boat is wire and plumbed for a generator, however it was removed. The current owner used a Honda 2000 portable Generator which did run the AC on the boat. It is be sold with the boat.

Many additional New items.

She is ready for her next owner as the current owner is moving up in size!

Call for details, Thank you!

Basic Information

Category: Cruising Yacht

Sub Category: Sedan Cruiser

Model Year: 1993

Year Built: 1993

Country: United States

Vessel Top: Hardtop

Fly Bridge: Yes

Cockpit: Yes

Dimensions

LOA: 32' 0" (9.75m)

Beam: 12' 3" (3.73m)

Min Draft: 3' 6" (1.07m)

Speed, Capacities and Weight

Cruise Speed: 18 Kts. (21 MPH)

Max Speed: 22 Kts. (25 MPH)

Displacement: 15000 Pounds

Water Capacity: 26.4172052 Gallons

Holding Tank: 5.28344104 Gallons

Fuel Capacity: 63.40129248 Gallons

Accommodations

Total Cabins: 2

Total Berths: 2

Sleeps: 4

Total Heads: 1

Hull and Deck Information

Hull Material: Fiberglass

Deck Material: Fiberglass

Hull Configuration: Modified Deep Vee

Hull Color: Black

Hull Finish: Plastic

Engine Information

Engines: 1

Manufacturer: Caterpillar

DETAILED INFORMATION

Accommodations

The 32 Sportfish has a great Cabin design. Step into the Master Stateroom that has twin berths that convert to a Queen sleeping if desired. There is plenty of storage under berths as well as built in closet and several pull out drawers.

Progressing forward the galley is to Port and the Dinette is once again convertible to a queen Berth. A large head with shower is to starboard.

Mechanical

Caterpillar Shop Rebuild 3116 350hp with 635 hours. Transferable Caterpillar Platinum warranty good thru July 2019!!

This boat is turn key and ready to cruise or fish. • New Oct 2017 ZF V drive • AWLGRIP engine compartment bilge • New SOUNDOWN engine compartment insulation and sound shield • New PSS Dripless shaft seal • New cutlass bearings • New four blade MICHIGAN DQX propeller • New rudder tiller, SEA STAR cylinder and sand shoe bearing • New DESTROYER steering wheel • New AWLGRIP dashboard • New CATERPILLAR engine gauge panel • New Switch panels at helm • New GARMIN 1040xs with new GARNIN 24 HD radar and sounder • New SIMRAD AP 24 autopilot • New STANDARD HORIZON VHF with remote mic • New JENSEN stereo with FUSION speakers • New AFI Dual-Trumpet "Full Blast" Air Horn • New STAMIOD Canvas with isinglass zip outs • New PRONAUTIC 1250P battery charger with remote monitor • New WEBESTO 16,000 btu air conditioner with wireless remote • New JABSCO 12 volt marine toilet • New bilge pumps and float switches • New Diesel fuel fills and hoses. Tanks polished last year • New RACOR 900 fuel filter/water separator • New red anti-fouling paint this year • New cabin carpeting • New cockpit vinyl pad

Reverso Oil Change system for the Motor and V Drive.

Exclusions

Owner's personal belongings.

Disclaimer

The Company offers the details of this vessel or yacht in good faith but cannot guarantee or warrant the accuracy of this information nor warrant the condition of the vessel. A buyer should instruct his representatives, agents, or his surveyors, to investigate such details as the buyer desires validated. This vessel or yacht is offered subject to prior sale, price change, or withdrawal

without notice.

PHOTOS

Albin2



good grief stern with bridge



good grief Port Stern



DSCN5369



DSCN5370



DSCN5371



DSCN5375



DSCN5374



DSCN5383



DSCN5384



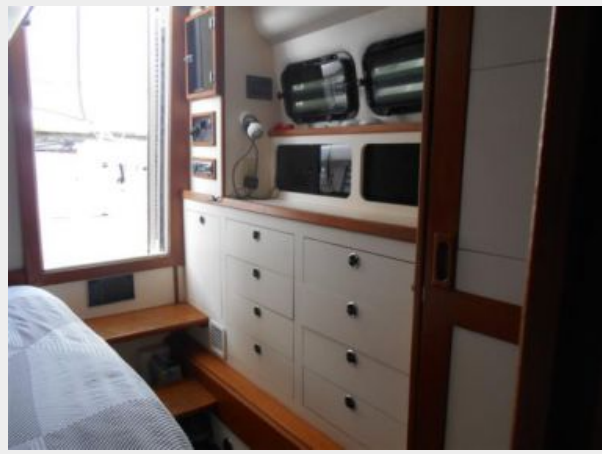
DSCN5387



DSCN5376



DSCN5382



DSCN5377



DSCN5378



IMG_20190106_112359563 (1)



DSCN5385



DSCN5386



IMG_20190106_112703933



DSCN5379



IMG_20190106_112439496 - Copy (2)



IMG_20190106_112538986 - Copy (2)



DSCN5388



DSCN5389



DSCN5390



DSCN5391



DSCN5392



DSCN5394



DSCN5395



DSCN5396



DSCN5397



DSCN5398



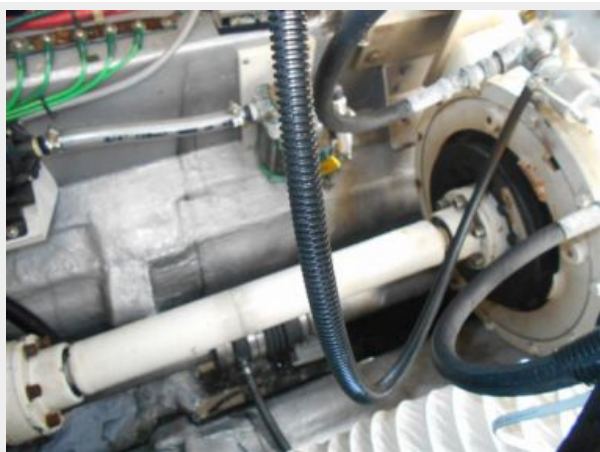
DSCN5400



DSCN5401



DSCN5403



IMG_20181015_120855701_HDR - Copy



IMG_20181015_120832785_HDR



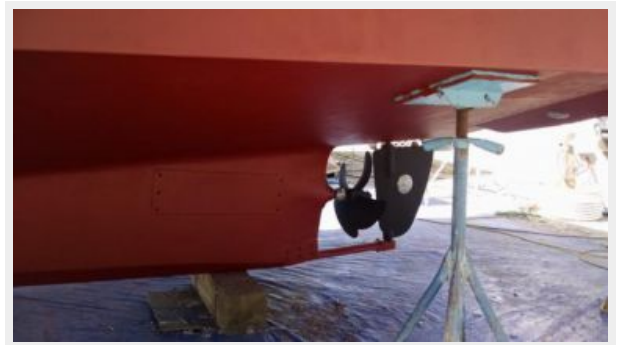
IMG_20181015_120842911_HDR - Copy (2)



IMG_20181015_120738390



IMG_20181015_120804379



IMG_20181015_160005809_HDR



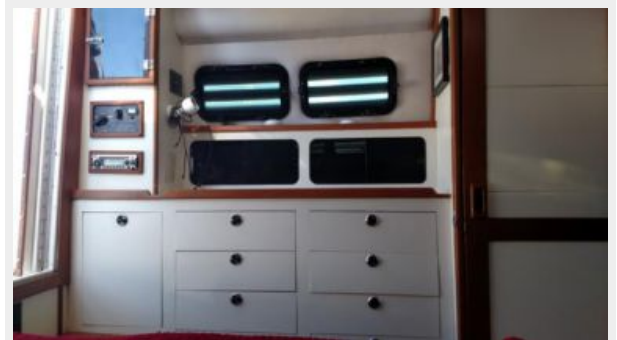
IMG_20181210_082044496_HDR



IMG_20190106_112729059



IMG_20190106_114403419



IMG_20190106_114440746



IMG_20190106_115321869



IMG_20190106_115426996



IMG_20190106_115537645



IMG_20190106_115545009



IMG_20190106_115608027 - Copy



IMG_20190106_115626293



CONTACTS

Andrey Shestakov, leading yacht broker of the sales department of Shestakov Yacht Sales Inc. Shestakov Yacht Sales Inc., the official representative of the Miami/Fort Lauderdale FL headquarters.

Contact details

Email: andrey@shestakovyachtsales.com

Web: shestakovyachtsales.com/en/

Telephones

USA: +1(954)274-4435

Office hours

Monday – Saturday: **9:00 - 21:00** EDT

Sunday: **closed**

Address



Harbour Towne Marina, 850 NE 3rd St,
STE 213, Dania, FL 33004