

## YOUNG LADY — GRAND BANKS



**Builder:** GRAND BANKS

**Year Built:** 2004

**Model:** Motor Yacht

**Price:** PRICE ON APPLICATION

**Location:** United States

**LOA:** 42' 0" (12.80m)

**Beam:** 14' 1" (4.29m)

**Max Draft:** 4' 2" (1.27m)

**Cruise Speed:** 9 Kts. (10 MPH)

Our experienced yacht broker, Andrey Shestakov, will help you choose and buy a yacht that best suits your needs **YOUNG LADY — GRAND BANKS** from our catalogue. Presently, at Shestakov Yacht Sales Inc., we have a wide variety of yachts available on our sale's list. We also work in close contact with all the big yacht manufacturers from all over the world.

If you would like to buy a yacht **YOUNG LADY — GRAND BANKS** or would like help answering any questions concerning purchasing, selling or chartering a yacht, please call **+1(954)274-4435**

---

# TABLE OF CONTENTS

---

TABLE OF CONTENTS	2
SPECIFICATIONS	3
Overview	3
Basic Information	3
Dimensions	3
Speed, Capacities and Weight	3
Accommodations	3
Hull and Deck Information	4
Engine Information	4
DETAILED INFORMATION	5
Accommodations	5
Galley	5
Helm Electronics	5
Deck Equipment	6
Mechanical	6
Exclusions	6
Disclaimer	6
PHOTOS	7
CONTACTS	14
Contact details	14
Telephones	14
Office hours	14
Address	14

---

# SPECIFICATIONS

---

## Overview

---

A Rick Obey & Associates Trade

The Grand Banks 42 Europa is the perfect platform for entertaining as well as a great live aboard yacht. A spacious salon opens onto the teak cockpit and swim platform. A fiberglass stairway gives easy access to the fly bridge. Below are comfortable accommodations for 4 in 2 en suite staterooms with the master forward and guest cabin midship with two twin berths.

This Grand Banks 42 Europa is powered with twin Cummins 6BTA M3 6-cylinder Turbo diesels.

## Basic Information

---

**Category:** Motor Yacht

**Sub Category:** Liveaboard

**Model Year:** 2004

**Year Built:** 2004

**Country:** United States

**Vessel Top:** Bimini Top

**Fly Bridge:** Yes

## Dimensions

---

**LOA:** 42' 0" (12.80m)

**Beam:** 14' 1" (4.29m)

**Max Draft:** 4' 2" (1.27m)

**MFG Length:** 43' 3" (13.18m)

## Speed, Capacities and Weight

---

**Cruise Speed:** 9 Kts. (10 MPH)

**Displacement:** 39000 Pounds

## Accommodations

---

**Total Cabins:** 2

**Total Heads:** 2

---

## Hull and Deck Information

---

**Hull Material:** Fiberglass

---

## Engine Information

---

**Engines:** 2

**Manufacturer:** Cummins

**Model:** 6BTA M3

**Engine Type:** Inboard

**Fuel Type:** Diesel

---

# DETAILED INFORMATION

---

## Accommodations

---

### SALON

- Burmese teak joinery
- L-settee w/table (P)
- 2 x Occasional chairs
- Bar w/icemaker
- 32" SONY TV
- Sirius SAT radio
- SONY Blu-Ray & CD players
- Engine room hatch

### MASTER CABIN-Forward

- Island double berth w/storage below
- Cabinet and drawer storage
- En suite head/shower

### GUEST CABIN-Midship

- Twin berths
- Cabinet and drawer storage
- Head and Shower

## Galley

---

- On-Deck
- Force 10 3-burner gas cooktop
- Sharp Microwave
- Norcold Refrigerator
- Icerette Icemaker

## Helm Electronics

---

- Furuno Navnet C-Map GPS/Chartplotter/radar (FB & Main Deck)
- Simrad AP25 Autopilot (FB & Main Deck)
- ICOM VHF (FB & Main Deck)
- Simrad Speed & Depth display (FB & Main Deck)
- Simrad Wind speed & direction display (FB)

- Ritchie Compass (FB & Main Deck)
- Cummins instrumentation display (FB & Main Deck)

---

## Deck Equipment

---

- Fully enclosed fly bridge (canvas & isinglass)
- 30 kg Bruce Anchor w/galvanized chain
- Lofrans electric windlass
- Teak decks
- 4 person Life Raft

---

## Mechanical

---

- Twin Cummins 6 BTA M3 6-cylinder Turbo diesels @370 hp each
- 9kW Onan generator
- Racor fuel filters
- Reverso Oil change system
- Aquamiser watermaker @1200 gpd
- MarineAir reverse-cycle A/C
- 20 gal. hot water heater
- 2 Automatic Rule bilge pumps
- 1 Manual bilge pump

---

## Exclusions

---

Owner's personal belongings.

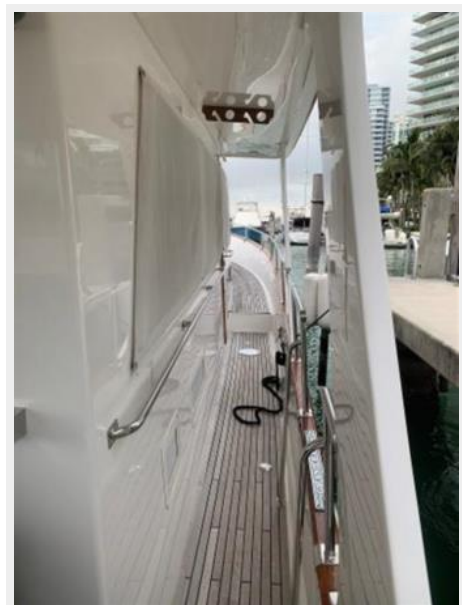
---

## Disclaimer

---

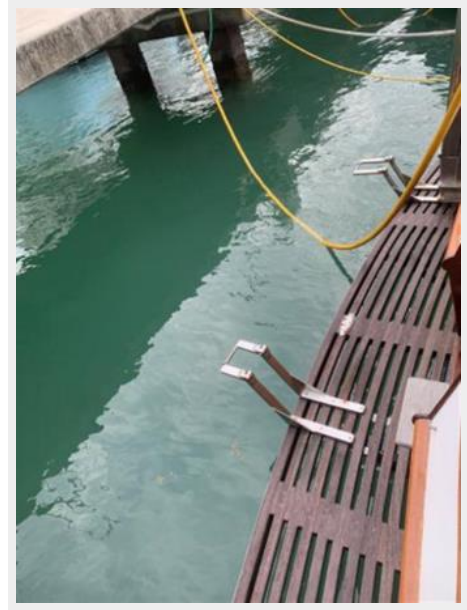
The Company offers the details of this vessel or yacht in good faith but cannot guarantee or warrant the accuracy of this information nor warrant the condition of the vessel. A buyer should instruct his representatives, agents, or his surveyors, to investigate such details as the buyer desires validated. This vessel or yacht is offered subject to prior sale, price change, or withdrawal without notice.

# PHOTOS



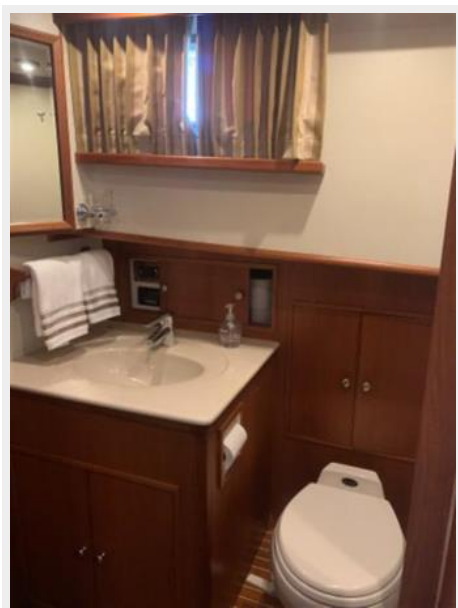
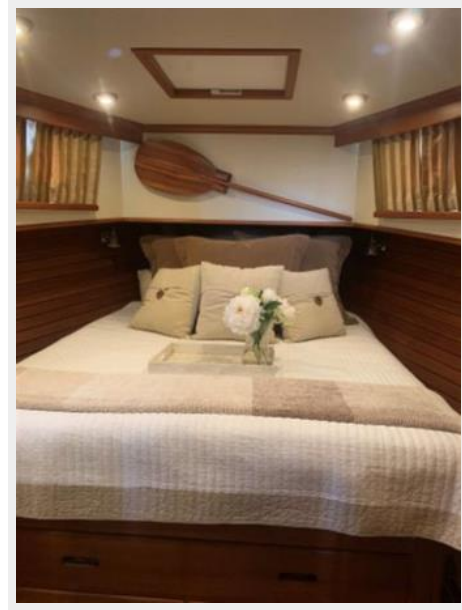














---

# CONTACTS

---

Andrey Shestakov, leading yacht broker of the sales department of Shestakov Yacht Sales Inc. Shestakov Yacht Sales Inc., the official representative of the Miami/Fort Lauderdale FL headquarters.

---

## Contact details

---

Email: [andrey@shestakovyachtsales.com](mailto:andrey@shestakovyachtsales.com)

Web: [shestakovyachtsales.com/en/](http://shestakovyachtsales.com/en/)

---

## Telephones

---

USA: +1(954)274-4435

---

## Office hours

---

Monday – Saturday: **9:00 - 21:00** EDT

Sunday: **closed**

---

## Address

---



Harbour Towne Marina, 850 NE 3rd St,  
STE 213, Dania, FL 33004