

WARSAN — WESMAC



Builder: WESMAC

Year Built: 2008

Model: Mega Yacht

Price: PRICE ON APPLICATION

Location: United Arab Emirates

LOA: 181' 0" (55.15m)

Beam: 37' 1" (11.29m)

Max Draft: 15' 6" (4.70m)

Cruise Speed: 13 Kts. (15 MPH)

Our experienced yacht broker, Andrey Shestakov, will help you choose and buy a yacht that best suits your needs Warsan — WESMAC from our catalogue. Presently, at Shestakov Yacht Sales Inc., we have a wide variety of yachts available on our sale's list. We also work in close contact with all the big yacht manufacturers from all over the world.

If you would like to buy a yacht Warsan — WESMAC or would like help answering any questions concerning purchasing, selling or chartering a yacht, please call +1(954)274-4435

TABLE OF CONTENTS

TABLE OF CONTENTS	2
SPECIFICATIONS	3
Overview	3
Basic Information	3
Dimensions	3
Speed, Capacities and Weight	3
Accommodations	4
Hull and Deck Information	4
Engine Information	4
PHOTOS	5
CONTACTS	14
Contact details	14
Telephones	14
Office hours	14
Address	14

SPECIFICATIONS

Overview

This bespoke yacht was designed to incorporate the classic features of the traditional Arabian Dhow. She brings together a combination of luxury and performance with an air of originality and sophistication. She set new benchmarks in blue water cruising for the most discerning of owners. She boasts 8 well-appointed cabins with accommodations for up to 22 guests. The open plan layout and furnishing of the spacious salon create the effect of a floating Majlis. With large windows on both beams giving her a light and airy feeling. The salon serves as a conversation and recreational area with full media entertainment systems and bar facilities.

Basic Information

Category: Mega Yacht

Model Year: 2008

Year Built: 2008

Country: United Arab Emirates

Fly Bridge: Yes

Dimensions

LOA: 181' 0" (55.15m)

LWL: 143' 3" (43.65m)

Beam: 37' 1" (11.29m)

Max Draft: 15' 6" (4.70m)

Speed, Capacities and Weight

Cruise Speed: 13 Kts. (15 MPH)

Displacement: 925941.5004 Pounds

Water Capacity: 5000 Gallons

Holding Tank: 2500 Gallons

Fuel Capacity: 17500 Gallons

Accommodations

Total Cabins: 8

Sleeps: 22

Captain Cabin: True

Crew Sleeps: 14

Hull and Deck Information

Hull Material: GRP

Engine Information

Engines: 2

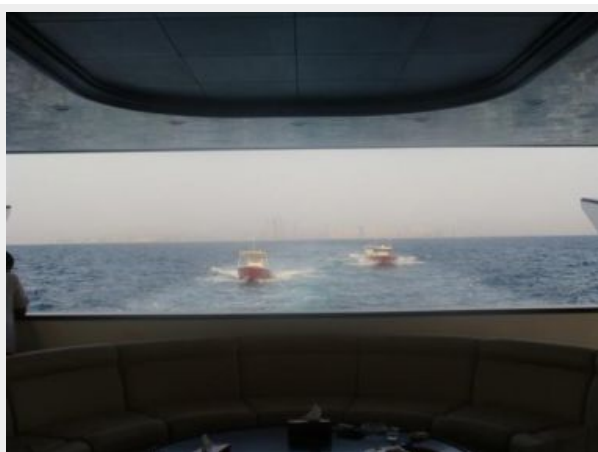
Manufacturer: Caterpillar

Model: 3508 B

Fuel Type: Diesel

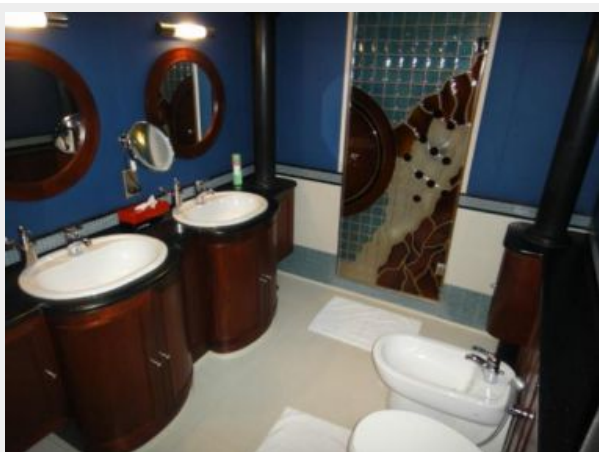
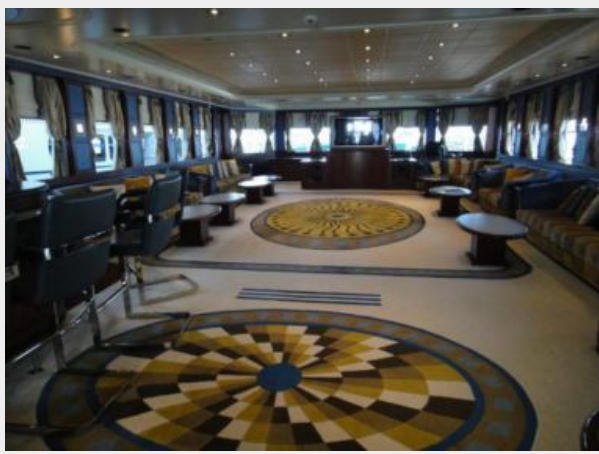
PHOTOS

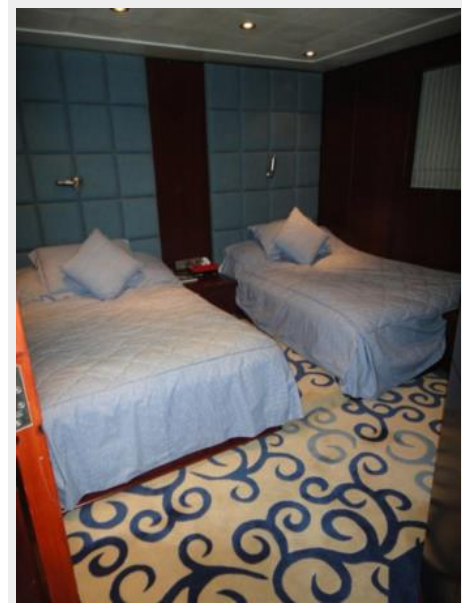


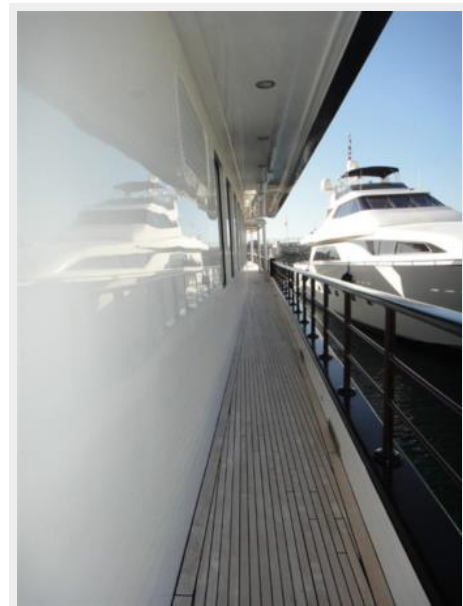


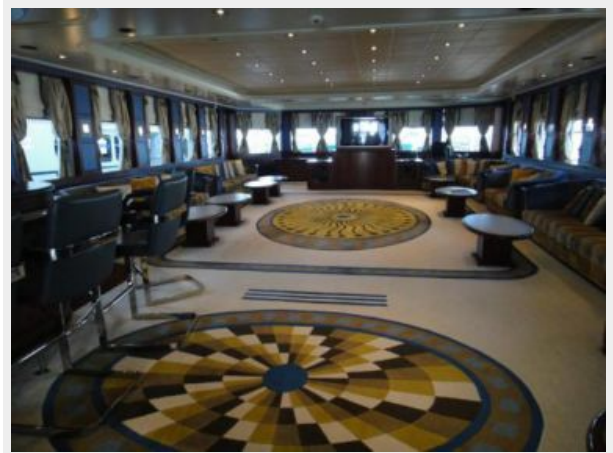






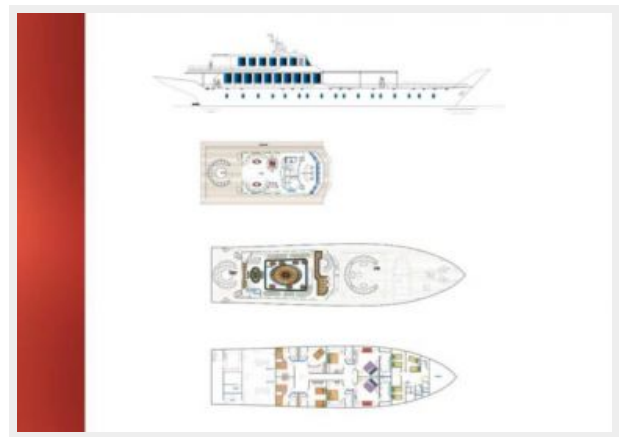






WARSAN SPECIFICATIONS

Main Dimensions	<ul style="list-style-type: none"> - Class Reinforced Plastic (GRP) Construction - 304 Length overall - 55.13m Hull length - 48.67m Length waterline - 43.63m Beam - 11.29m Depth - 4.7m Draft - 3.27m Displacement, full load - 320m Full load - 45.5m Speed - 12.8knots 	<ul style="list-style-type: none"> Make - Warsan, USA Model - 11.80p 	<ul style="list-style-type: none"> Make - GOMACHT s.r.l. Italy Model - 81 2.400 Quantity - 3
Deck capacities	<ul style="list-style-type: none"> Fuel - 17000/l/gal Water - 20000/gal Black water - 2000/gal Gray water - 2000/gal Ice oil - 4000/gal 	<ul style="list-style-type: none"> Wheel house - Deck x 24x40 x 2004 Wheel house - Deck x 12x40 x 1004 Engine room - 1 Deck x 24x40 x 2004 Engine room - Deck x 24x40 x 2004 	<ul style="list-style-type: none"> Quantity - 2 Make - GOMACHT s.r.l. Capacity - 1000m
Main engines	<ul style="list-style-type: none"> Make - Caterpillar Model - 3308 B Power power - 1300hp @1800rpm 	<ul style="list-style-type: none"> Make - GOMACHT, Italy Model - 81.6301, Deck, Forward Deck aft room - GOMACHT, Italy Model - VCS- 3070, Deck, Aft 	<ul style="list-style-type: none"> Quantity - 2 Type - Recreational Make - Hain, Australia Model - H8 11800
Generator	<ul style="list-style-type: none"> Make - Yanu Dies, Japan Model - HD 6020-60-A Reduction ratio - 2.45:1 	<ul style="list-style-type: none"> Engine room ventilation - Max 247100 Make - Model - Engine room fire fighting system - Electric Quantity - 2m Type - White water system Capacity - Deck x 60m 	<ul style="list-style-type: none"> Quantity - 2 Type - Fueloil Make - Hain, Australia Model - VC 6000
Stabilizers	<ul style="list-style-type: none"> Make - Swede Model - DG 91 HD 40 Capacity - 23000lb, 420h x 20h 	<ul style="list-style-type: none"> Fire fighting pumps - Type - Electric Quantity - 2m Engine room fire fighting system - White water system Type - Capacity - Deck x 60m Water meters - Quantity - 2m Model - 4438MCD Make - Capacity - 1000/gal/day 	<ul style="list-style-type: none"> Quantity - 2 Type - Electric Hydraulic Make - Lacombe Smith, France
Accommodation	<ul style="list-style-type: none"> Make - Nord Eymouth, Holland Model - 2m 	<ul style="list-style-type: none"> Air conditioning system - Make - GIB Hvacline Model - Type - Chilled water system Model - HCSO 136/9 and HCSA 384/9 	<ul style="list-style-type: none"> Quantity - 2 Make - Hain, Australia Model - VC 6000



CONTACTS

Andrey Shestakov, leading yacht broker of the sales department of Shestakov Yacht Sales Inc. Shestakov Yacht Sales Inc., the official representative of the Miami/Fort Lauderdale FL headquarters.

Contact details

Email: andrey@shestakovyachtsales.com

Web: shestakovyachtsales.com/en/

Telephones

USA: +1(954)274-4435

Office hours

Monday – Saturday: **9:00 - 21:00** EDT

Sunday: **closed**

Address



Harbour Towne Marina, 850 NE 3rd St,
STE 213, Dania, FL 33004