

ZINGARA — GRAND BANKS



Судостроитель: GRAND BANKS

Год постройки: 1989

Модель: Траулер

Цена: **ЦЕНА ЯХТЫ ПО ЗАПРОСУ**

Местонахождение: United States

Длина общая: 47' 1" (14.35m)

Ширина: 14' 9" (4.50m)

Макс. осадка: 4' 5" (1.35m)

Крейс. скорость: 10 Kts. (12 MPH)

Макс. скорость: 18 Kts. (21 MPH)

Купить Zingara — GRAND BANKS а также выбрать подходящую вам яхту из нашего каталога яхт вам поможет опытный яхтенный брокер Андрей Шестаков. На сегодняшний день компания Shestakov Yacht Sales Inc. имеет большое количество яхт в собственном списке продаж, а также тесно сотрудничает со всеми крупными яхтенными производителями по всему миру.

Для того чтобы купить яхту Zingara — GRAND BANKS а также проконсультироваться по любому вопросу связанному с покупкой, продажей, чартером яхт позвоните по телефону **+7(918)465-66-44**.

ОГЛАВЛЕНИЕ

ОГЛАВЛЕНИЕ	2
ХАРАКТЕРИСТИКИ	5
Обзор	5
Основная информация	5
Размеры	6
Скорость, вместимость и масса	6
Размещение	6
Корпус и палуба	6
Информация о двигателе	7
ПОДРОБНОЕ ОПИСАНИЕ	8
Electrical Equipment 12v	8
Electrical Equipment 24v	9
Electrical Equipment, 120v	9
Helm Controls/Electronics/Navionics/Communication (both bridges unless noted)	10
Lower Bridge	10
Fly-Bridge	11
Entertainment	11
Safety/Security	11
Galley	12
Heads (forward and aft)	12
Exterior Equipment	12
Flying Bridge	13
Dinghy	14
Accessories	14
Annual Maintenance	15
Maintenance: Fuel Tanks	15
Maintenance: Caterpillar Engines	15
Maintenance: Onan Generator	16

Maintenance: 2017	16
Maintenance: 2018	16
Maintenance: 2019	17
2012 Upgrades	18
Исключения	18
Отказ от ответственности	18
ФОТОГРАФИИ	19
Zingara (3) Nova Cool Units 12v/110v	19
Zingara	19
Zingara	19
Zingara	19
Zingara	19
Zingara	19
Zingara	19
Zingara	20
Zingara	20
Zingara	20
Zingara	20
Zingara	20
Zingara	20
Zingara	20
Zingara	20
Zingara	20
Zingara	21
Zingara	21
Zingara	21
Zingara	21
Zingara	21
Zingara	22
Zingara	22
Zingara	22
Zingara	22
Zingara	22
Zingara	22

Zingara	23
Zingara	23
Zingara	23
Zingara	23
Zingara	23
Zingara	23
Zingara	24
Zingara	24
Zingara	24
Zingara	24
Zingara	24
Zingara	25
Zingara	25
Zingara	25
Zingara	25
Zingara	25
Zingara	25
Zingara	26
Zingara	26
КОНТАКТЫ	27
Контактная информация	27
Телефоны	27
Время работы	27
Адрес	27

ХАРАКТЕРИСТИКИ

Обзор

This Grand Banks 46 Classic shines among the competition! ZINGARA (Italian for gypsy woman) is ready to cruise; all you need is provisioning and clothes. Her program of upgrades and preventive maintenance has prepared her to be a dependable and eye-catching cruiser for many years to come.

The queen-size walk-around bed and abundant drawer and closet space enhances liveability and comfort. The optional down galley layout includes spacious refrigeration (two refrigerators, one top loading freezer), and a laundry area forward. Central vacuum makes it easy to her keep clean. This vessel is well laid out for a liveaboard couple or long range cruising. Her twin Caterpillar 3208T/A engines provide smooth and efficient cruising at 9-10 knots at 1500-1600 rpm. An 8Kw generator with ample food, water and waste storage allows for journeys off the grid.

This vessel's tanks, decks and mechanical systems have been professionally maintained. These tanks are in above average condition; they have been inspected. ZINGARA's hull and superstructure receive periodic waxing and polishing. Her teak decks are dry, in good condition. Her varnish work has been maintained in excellent condition, including epoxy barrier coating to her transom topped with coats of Pettit 2015 varnish in 2018. Her bottom was professionally stripped in recent years and barrier coats applied. All maintenance records for this vessel are available onboard 24/7, including engine oil analysis since 2011.

ZINGARA provides a unique opportunity to acquire a polished and elegant motor vessel maintained by careful and knowledgeable owners and overseen by the boatyard which originally commissioned the boat. Since purchasing this vessel in 2017, she has exceeded the current owner's expectations for sea worthiness, liveaboard comfort and reliability over thousand of miles of cruising from the Great Lakes to Florida. Given the vessel's good shape and history of care by its prior owners, the current owners have taken the approach to be proactive on maintenance as well.

Основная информация

Тип судна: Траулер

Модельный год: 1989

Год постройки: 1989

Страна: United States

Верх: Bimini Top

Открытая палуба мостика: Да

Размеры

Длина общая: 47' 1" (14.35m)

Ширина: 14' 9" (4.50m)

Макс. осадка: 4' 5" (1.35m)

Скорость, вместимость и масса

Крейс. скорость: 10 Kts. (12 MPH)

Крейсерская скорость поворота: 10 Kts.

Дальность на крейсерской скорости:
900

Макс. скорость: 18 Kts. (21 MPH)

Водоизмещение: 39000 Pounds

Чистый вес: 20 Pounds

Вместимость воды: 276 Gallons

Вместимость сточного бака: 45 Gallons

Объем топливного бака: 600 Gallons

Размещение

Всего кают: 2

Всего коек: 2

Спальные места: 6

Всего ком. состава: 2

Корпус и палуба

Материал корпуса: Fiberglass

Материал палубы: Teak over Fiberglass

Комплектация корпуса: Semi-Displacement

Цвет корпуса: White

Отделка корпуса: Aluminum

Дизайнер корпуса: Kenneth Smith

Дизайнер экстерьера: Grand Banks

Дизайнер интерьера: Dick Loh

Информация о двигателе

Двигатели: 2

Производитель: Caterpillar

Модель: 3208TA

Тип двигателя: Inboard

Тип топлива: Diesel

ПОДРОБНОЕ ОПИСАНИЕ

Electrical Equipment 12v

Circuit breakers on all systems

Alternator, 51 amp each engine

Heavy duty 8D engine starting batteries with fiberglass box

Heavy duty 8D house batteries (2) with fiberglass box

Generator starting battery and box

Sentry Battery chargers (2)

Battery selector switch

Rule automatic bilge pumps, fore and aft

Bonding system

Galvanic isolator

Jabsco 250cfm engine room blowers (2)

Engine room lights (5)

Pressurized fresh water system, Groco Senior pump, 12 gpm, with accumulator tank

Refrigeration: Nova Kool units (2 refrigerators & one freezer)

Navigation lights; LED Anchor light, masthead; LED Spreader lights on mast (2)

AFI Model MRV H.D. Wiper system (3)

InstaTrim hydraulic trim tab motor

Windscreen washer

Fiamm Air Horn

Lofrans anchor windlass & Shurflo Pro-Blaster 5.0GPM marine wash down pump (on separate breaker, lower helm)

Dirt Devil CV950 central vacuum

Boom mounted Rule14 Series electric winch with 5/32" SS cable for dingy launch (no circuit breaker) 1400lb max rating

Xantrex Portawattz 300 watt power inverter inside lower helm storage

12V power plugs, cigar adapter, locations: fly-bridge, saloon adapter box near TV and aft cabin shelf, port side.

12V marine 2-pin plugs locations: lower helm; salon: behind TV and inside cabinet

Electrical Equipment 24v

Westmar DPC8E 8HP bow thruster (1999)

C-Charger 9000 series battery charger, 24 volt

24 volt battery with shut off switch (under v-berth)

Electrical Equipment, 120v

Circuit breakers on all systems

Ground fault circuit interrupters to outlets

Engine room lights florescent (2)

Onan MDKD 8 kW generator with sound shield

Holding tank macerator pump out

Shore power inlets at bow and stern

Reverse polarity indicator light

Shore or Generator selector switch

Shore or Generator A-C power amp and volt meters, switchable for House or Air Con circuits

Refrigeration: Nova Kool units (2 refrigerators & one freezer)

Raritan Hot Water heater

Whirlpool compact LC4900XS washer and LE4930XS dryer

HVAC (2) Marine Air Systems; (1) Pompanette Air:

Forward cabin 10,000 BTU, reverse cycle heat only, digital control panel

Main salon: 16,000 BTU, reverse cycle heat switchable to 120V strip heating

Aft cabin: 12,000 BTU, reverse cycle heat switchable to 120V strip heating

Engine room: 1000 GPH air conditioning pump

Helm Controls/Electronics/Navionics/Communication (both bridges unless noted)

Instrument panel, engine VDO gages (both bridges) port and starboard: RPM, water temp, oil pressure, transmission oil temp, voltage, charging amps

Alarm panel with indicators for: bilge pump (fore and aft); port and starboard engine oil pressure and water temperature, Engine room lights

Controls for Westmar bow thruster

Engine speed controls, port & starboard, push pull cable

Transmission shift controls, port & starboard, push pull cable

Glendinning engine synchronizer

Danforth Constellation compasses

InstaTrim hydraulic trim tabs controller switch, port and starboard

Furuno NAVpilot-700 autopilot system

Furuno Navnet 3D Ultra High Definition 24" 4KW Radar Dome

Furuno GP 330B NMEA 2000 GPS Sensor

Furuno NavNet 3D Hub 101

NEMA 2000 Network

New antennas for electronics

Furuno Transducer

Furuno FA 30 Black Box AIS Receiver

Lower Bridge

ICOM IC-M45A VHF marine transceiver

Raymarine C80 chart plotter

B&G Focus depth sounder

Lenovo ThinkPad w/ Nobeltec TimeZero Trident navigation software

Airmar / Glomex weather system

Fly-Bridge

ICOM IC-M604 Fixed Mount VHF w/ Command MIC 111 (new 2013)

Furuno Navnet 3D Color 12.1" MFD

NavPod Powerpod for MFD

Raymarine ST40 depth sounder

Borel Mfrg. dual raw water failure alarm

Entertainment

KVH Trackvision M1 antenna with Direct TV Receiver/Controller 12 V

Jensen 24" LED TV 12 V with digital antenna

Bose sound system, Onkyo stereo tuner/amp and & BlueRay DVD Player (120 volt)

Pioneer stereo radio/CD with Bluetooth (main salon) (2017)

Alpine CDA Full Marine CD Player Sirius Satellite Radio Interface with Tuner & Antenna. Four JBL Audio 7.7" Marine speakers. Alpine Remote 12V (fly-bridge)

Safety/Security

Carbon monoxide detectors (fore and aft), 9V

Life Ring, throw rope

13 adult life preservers (2 Type 1), 3 children's

Emergency throw rope

Flares (exp. June 2020); Shells (exp. Oct. 2019)

Fire: (1)) Badger 8lb, (1) Amerex 2.5lb and (1) Amerex 5lb ABC dry chemical (fore, aft and saloon); (1) 2.5lb. ABC dry chemical (fly-bridge); (1) Kidde 5lb CO2 (forward head); Fireboy manual/automatic 30lb Halon fire suppression system (engine room)

PAR model 33965 manual bilge pump, 3 strokes/gallon

Galley

Double stainless steel sink with Delta single lever faucet with retractable hose outlet

Seagull IV X1F Drinking Water System for Galley & Ice maker

Two refrigerators & one freezer (NovaKool replaced Gruenert in 2012)

U-Line Icemaker (new 2012)

Princess electric 3 burner stove and oven

Microwave: Sharp Convection Oven (new 2014)

Galley vent Jabsco 105cfm blower

Heads (forward and aft)

Vacu-Flush Land and Sea (2)

Exterior Equipment

Air horn

Standard Horizon 240SW 5x8" hailing horn

Anchor chain locker divided for rope & chain

Anchor platform fiberglass with stainless pulpit

Anchor windlass locker, fiberglass

Bronze chocks & cleats

Fiberglass deck box on foredeck

Bronze deck fillers for water, diesel & holding tanks

Vents for fuel & water tanks

Engine room vents

Flagstaff holders, with teak staffs, bow & stern

Salt water outlet forward with hose and nozzle

Shore water inlet in aft cockpit

Transom shower with Hot & cold water, aft cockpit

Stainless steel grab rails

Steps to fly bridge with SS railings

Teak name and hail boards

Teak navigation light boards

Teak bulwark caps/toe rail with scrolls

Teak safety rail on main deck with stainless steel stanchions

Teak transom with transom door

Teak decking on front, side, aft and fly-bridge, decks in above average condition

Extended teak swim platform with ladder, replaced in 2005

Hinged aluminum mast & boom GB 49 size

Boom crutch, aluminum

Port and starboard boarding gates with Grand Banks step plates

Lewmar Skylight hatches (3)

Lofrans anchor windlass

Hinged lazarette hatches (2), aft cockpit

Stainless steel scuppers, aft cockpit

Flying Bridge

Captain's chair at helm position

Bimini top and bimini extension

Canvas side panels

Teak lattice table

Large cooler

Custom cushions for bridge seats and seat backs, including settee

Dinghy

Zodiac 310 Cadet RIB (2012)

Yamaha F9.9SMHB 4-stroke outboard (new 2014) with 3.2 gallon tank, 2 gallon plastic container

Bench seat, oars, anchor with rode, repair kit, running light, hold down straps, towing bridle and canvas cover

Cabin top bunks to support and secure dingy

Accessories

50 Amp shore power cords (2)

Bruce 20kg anchor with 200' chain

Danforth 35H anchor with approx. 200' twisted 3/4" nylon rope

2 spare propellers: original Stone Marine Dia 30" X Pitch 27" X 4 Blade

3 Fenders, large

4 Fenders, medium

5 Dock lines, black

3 Dock lines, nylon

Snubber, anchor chain

Magma stainless steel propane grill

Shore water supply filter and 40psi pressure regulator

Flags: American, Bahamian and Canadian courtesy, Q flag

Bora 12V electric fan, aft cabin

Annual Maintenance

Annual Maintenance

Covered dry storage in off season

Oil Changed at the end of each season with oil sampling. Records since 2011

All systems winterized by Dickerson Harbor, Trappe, MD at the end of each season

Engine zincs checked periodically, replaced as necessary

Hull zincs checked annually, replaced as necessary

Maintenance: Fuel Tanks

A complete inspection was completed in November 2011. Report available on request for this vessel, previous name Windalin. Findings: The tanks were found to be in good condition. There was only a slight accumulation of sludge at the bottom of each tank and no sign of internal rust or other conditions that would compromise the internal integrity of the tanks. The sludge was removed during servicing. The welded seams were in good condition. The visible outsides of the tanks were also found to be in good condition. There was no rust or other signs of moisture accumulation on the top of the tanks, as would be noted if there was water leaking around the fill hose. The few spots of flaking paint and superficial rust spots were serviced as noted above

Maintenance: Caterpillar Engines

Install Racor Vacuum Gauges on fuel filters

Install AirSep air filters on both CAT engines

Both engine heat exchangers were cleaned in 2012

Engine raw water system cleaned with RidLyme 2017

Charge air coolers removed and cleaned 2017

Replace port engine alternator at 2691 hours 2017

Replaced primary and secondary fuel filters on CATs 2017

Fan belts replaced, starboard and port engines 2018

Alternator on starboard engine replaced with new. Old alternator tests good, is kept as spare

Impellers replaced, starboard and port engines 2018

Installed M+H ProVent 200 oil separation system to port and starboard engines 2018

Rig drain cans to ProVent system for port and starboard engines 2019

Pressure tested port engine cooling system for coolant leak. Replaced expansion tank pressure cap with new 13psi rating

Adjust alternator belt tension

Maintenance: Onan Generator

Heat exchanger and hoses replaced in 2013

Exhaust hose replaced in 2013

Alternator replaced in 2013

Fuel pump replaced 2013

Replaced primary and secondary fuel filters Onan 2017

Engine water pump replaced with new pump 2018

Water temperature sensor replaced and repaired cracked resonator 2017

Maintenance: 2017

Bow thruster motor disassembled to replace sheered Lovejoy coupling. Coupler modified with one inch steel extension welded and machined

Windlass, replace two broken mounting studs with custom 316 SS studs

Replaced aft VacuFlush pump bellows and motor with new quieter kit.

Repaint all 29 window frames.

Replaced Rule 500 GPH aft shower pump

Replace starboard engine room blower

Maintenance: 2018

Propellers removed and tuned by Black Dog Propellers. Align port engine propeller shaft

Replace hot water heater tank magnesium anode

Replace both rudder post studs with new bronze studs

Replace one leaking trim tab hose

Rebuild Groco freshwater pump with new impellers and seals

Salon and aft cabin A/C units professionally serviced

2 coats of Pettit 2015 varnish to handrails, toe rails and trim

Strip transom and apply 2 coats West marine Epoxy and 5 coats Pettit 2015 varnish

Remove transom door and remove and rebed door frame

Replace Krauss&Naimer switch with new. A/C Ammeter and voltmeter now indicate for house and air cond circuits

Groco fresh water pump motor rebuilt with new brushes and bearings. Function verified at Groco. New Johnson 5.2 gal/min pump onboard as backup

Air cond circulation pump bearings oiled and returned to operating. New pump onboard as spare.

Rudders removed to correct 'weepage' of water along seams. Water judged to be entering at rudder posts. Water drained. Rudder posts sealed with epoxy and Sikaflex. Rudder seams fiber glassed, sanded smooth and painted.

Furuno radar removed and sent to Furuno to diagnosis unit function

Port engine propeller replaced with spare after striking object in Dismay Swamp canal. Damage propeller repaired by Johnny's Propeller service, Detroit, MI.

New Furuno radar unit installed 12/30/18 (3 year warranty)

Maintenance: 2019

Replace port engine propeller with repaired propeller

Polish with Aquatech, entire boat

2 coats Pettit 2015 varnish to hardrails

Strip and repaint aft cabin windows, port side

2012 Upgrades

Rebuild and reupholster barrel chairs recover helmsman seat

Soda blast, barrier coat, and paint bottom

Sand, prime, and Awlgrip mast & boom. Upgrade dinghy lifting system with Harken hardware

Install new Furuno electronics

Add 2nd battery charger for house batteries

Add dedicated circuit breakers for battery chargers

Awl Grip boot stripe

Исключения

При продаже яхты исключаются личные вещи владельца.

Отказ от ответственности

Компания предоставляет описание судна или яхты добросовестно, но не может гарантировать точность этой информации, а также не ручается за техническое состояние. Покупатель должен проинструктировать своих агентов или оценщиков исследовать представленную информацию более подробно, по собственному желанию. Продажа судна или яхты, изменение цены или снятие с продажи будет происходить без предварительного уведомления.

ФОТОГРАФИИ

Zingara (3) Nova Cool Units 12v/110v



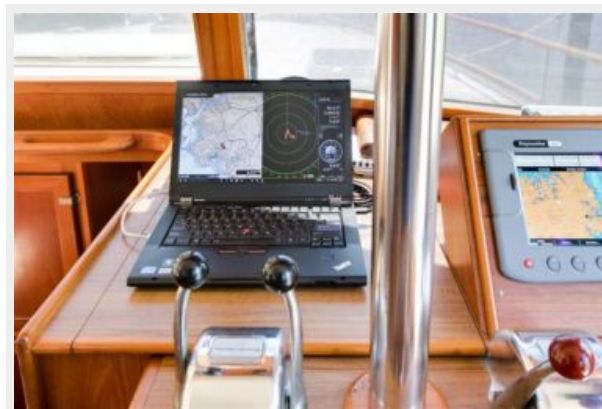
Zingara



Zingara



Zingara



Zingara



Zingara



Zingara



Zingara



Zingara



Zingara



Zingara



Zingara



Zingara



Zingara

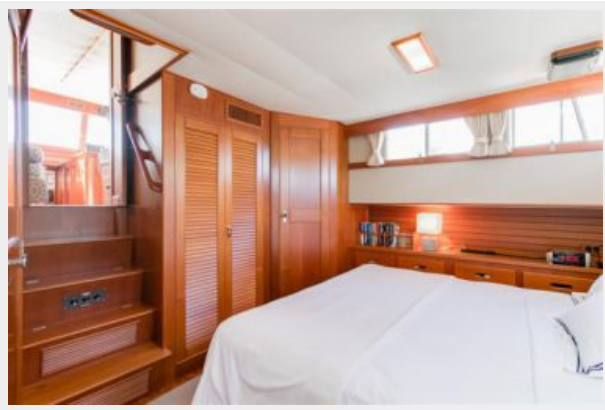


Zingara

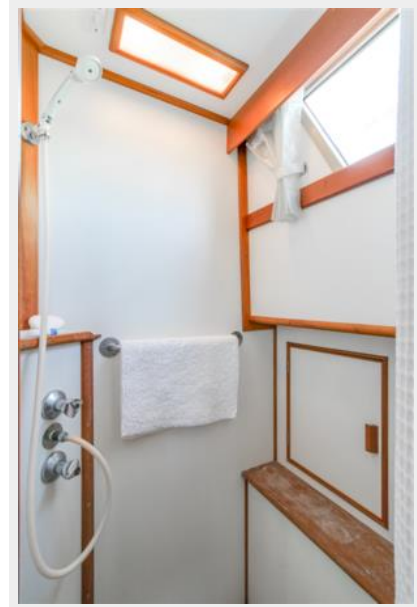
Zingara



Zingara



Zingara



Zingara



Zingara



Zingara



Zingara



Zingara



Zingara



Zingara



Zingara



Zingara



Zingara



Zingara



Zingara



Zingara

Zingara



Zingara



Zingara



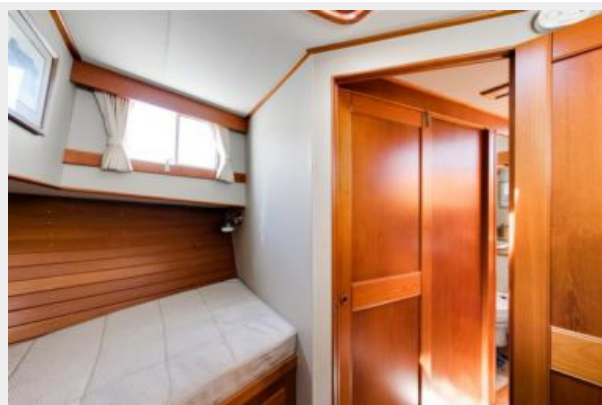
Zingara



Zingara



Zingara



Zingara



Zingara



Zingara



КОНТАКТЫ

Андрей Шестаков (Andrey Shestakov) – ведущий яхтенный брокер отдела продаж яхт и судов компании Shestakov Yacht Sales Inc. Официальный представитель Shestakov Yacht Sales Inc. для русскоговорящих клиентов в центральном офисе компании в Майами/Форт Лодердейл/Флорида/США.

Контактная информация

Email: andrey@shestakovyachtsales.com

Web: shestakovyachtsales.com

Телефоны

Краснодарский край: **+7(918)465-66-44**

США, Майами, Флорида: **+1(954)274-4435**

Время работы

Понедельник – Суббота: **9:00 - 21:00**
EDT

Воскресенье: **Закрито**

Адрес



Harbour Towne Marina, 850 NE 3rd St,
STE 213, Dania, FL 33004