

JEANNEAU 44 DECK SALOON — JEANNEAU



Builder: JEANNEAU

Year Built: 2012

Model: Deck Saloon

Price: PRICE ON APPLICATION

Location: United States

LOA: 44' 0" (13.41m)

Beam: 13' 10" (4.22m)

Min Draft: 5' 2" (1.57m)

Our experienced yacht broker, Andrey Shestakov, will help you choose and buy a yacht that best suits your needs Jeanneau 44 Deck Saloon — JEANNEAU from our catalogue. Presently, at Shestakov Yacht Sales Inc., we have a wide variety of yachts available on our sale's list. We also work in close contact with all the big yacht manufacturers from all over the world.

If you would like to buy a yacht Jeanneau 44 Deck Saloon — JEANNEAU or would like help answering any questions concerning purchasing, selling or chartering a yacht, please call +1(954)274-4435

TABLE OF CONTENTS

| | |
|---|----|
| TABLE OF CONTENTS | 2 |
| SPECIFICATIONS | 5 |
| Overview | 5 |
| Basic Information | 13 |
| Dimensions | 13 |
| Speed, Capacities and Weight | 13 |
| Accommodations | 14 |
| Hull and Deck Information | 14 |
| Engine Information | 14 |
| PHOTOS | 15 |
| Fantastic saloon area | 15 |
| Great cockpit and room to entertain | 15 |
| Modern galley with clean lines | 15 |
| Master king centerline aft | 15 |
| Centerline queen forward | 15 |
| In her slip | 15 |
| Clean, wide side decks keep things safe | 16 |
| Housetop deck is sleek and unobstructed | 16 |
| German main sheeting | 16 |
| All lines are led aft under the decks | 16 |
| The windlass is mounted below deck as well | 16 |
| A beefy Mantus anchor and all chain rode | 16 |
| Looking aft- clean lines and plenty of deck lounging space | 17 |
| Jib and double-ended main sheets go under the deck as well, reducing trip hazards | 17 |
| Dual wheels, a great cockpit table and plenty of seating for guests (or room to stretch out!) | 17 |
| In mast furling makes handling lines from the cockpit easy! | 17 |
| Touch screen multi display with custom guard | 18 |
| View forward from the helm | 18 |

| | |
|---|----|
| Great lounging space and three large cockpit lazarettes | 18 |
| Primary winches are within easy reach of each helm. | 18 |
| Harken Rewind two-speed reversing electric winches and a bow thruster make things easy | 19 |
| Electric two-speed halyard winch on port | 19 |
| Lines on starboard go around the Spinlock block and over to the electric winch | 19 |
| Line tails stow away beneath the self-stowing companionway boards | 19 |
| Clean lines and loads of storage in the galley | 19 |
| Looking down into the saloon | 19 |
| On port, the nav with double leather desktops and settee | 20 |
| Loads of storage beneath and behind the settees | 20 |
| ..Conceals the optional second fridge/freezer | 20 |
| Locker beneath the nav station.... | 20 |
| Leather top desk on port in the forward stateroom | 21 |
| The dinette on starboard with electrically operated table | 21 |
| Forward stateroom with centerline queen berth | 21 |
| With computer storage beneath the top | 21 |
| Looking into the forward ensuite head | 22 |
| Fresh water flush electric heads | 22 |
| Folding Plexiglass panels swing easily to separate the shower | 22 |
| Six lockers above the countertop and plenty of storage below as well | 22 |
| The sink cover folds and slides back to open up the sinks and provide a place for sponges and soap while you wash | 23 |
| Drawers and bin storage below | 23 |
| Sliding rack organizers and a bin freezer to the left | 23 |
| Above counter lockers all opened | 23 |
| Centerline king berth in the master stateroom aft; note the leather nightstand spaces | 24 |
| Double hanging lockers on starboard, with nice seating areas on either side | 24 |
| Lockers along the hull on either side; a tall locker with shelves on port | 24 |
| More storage beneath the nightstand spaces on either side | 24 |

| | |
|--|----|
| Plexiglass bi-fold panels swing into place for showering | 25 |
| Countertop extension folded up | 25 |
| Aft head is accessible from the aft cabin or saloon. Note the countertop extension over the head. Workbench? | 25 |
| A super clean Yanmar with under 400 hours! | 25 |
| Saildrive compartment looks almost new as well | 26 |
| 2016 Avon 10' RIB has hardly been used | 26 |
| Lifting crane for outboard | 26 |
| Yamaha electric start 15HP engine | 26 |
| "SUNDAY KINDA LOVE" at anchor | 27 |
| SUNDAY KINDA LOVE | 27 |
| Flying her chute | 27 |
| Off the wind | 27 |
| Jeanneau 44 DS sail plan | 28 |
| Jeanneau 44 DS deck layout | 28 |
| Experience you can depend on | 28 |
| Jeanneau 44 DS two cabin layout | 28 |
| CONTACTS | 29 |
| Contact details | 29 |
| Telephones | 29 |
| Office hours | 29 |
| Address | 29 |

SPECIFICATIONS

Overview

Designed for relaxation and exceptional comfort, the Sun Odyssey 44DS also delivers the thrill of responsive sailing. On deck and underway, this model features easy, responsive sailing for a short-handed crew. The cockpit is perfect for gathering with friends or family, while twin helm stations with centralized sail handling and electric winches make sailing a joy.

“SUNDAY KINDA LOVE” is a beautiful example of the Jeanneau 42 Deck Saloon. A 2012 model, she wasn’t commissioned until 2014 and shows very light use. A two cabin version, she features an island centerline queen berth with a desk and ensuite head forward and an island centerline king berth aft. Her owner has made a number of upgrades to her and kept her in superb condition, so you would be hard pressed to find a better choice.

A few of her more notable features include:

- Yanmar sail drive with under 400 hours
- Harken electric rewind primary winches and electric halyard winch
- Three zone reverse cycle heat/air conditioning
- CruiseAir electric auxiliary heating in the saloon for year-round living
- Jabsco Quiet Flush electric fresh water flush heads
- Bow thruster
- Avon 10’ RIB with Yamaha 15HP electric start outboard motor
- Davits, engine hoist and outboard motor pad
- Full cockpit enclosure
- Raymarine eSeries Hybrid Touch display and radar, autopilot and multi displays
- Bose sound system

Whatever your plans are, if you are looking for an exceptionally maintained boat in the 40’ to 50’ range, “SUNDAY KINDA LOVE” is certainly worthy of your personal inspection- you won’t be disappointed. Call and make an appointment to come see her today!

ACCOMMODATIONS (VESSEL WALK-THRU)

Forward VIP stateroom:The forward stateroom features a centerline queen berth that is a roomy 82” x 64”, with step-ups on either side and storage beneath it. The berth is positioned low, however, so it’s simply a matter of sitting down rather than climbing up and in. On either side is a nightstand and a reading light, as well as hullside windows with solid sliding shades for privacy. Tall fiddled shelves line the hullsides above and the length of the berth.

Aft of the berth on starboard there is a tall locker with shelving inside and a fiddled shelf above it. On port there is a leather topped desk with computer storage and a vertical locker beneath. Aft of the desk is a hanging locker, with a fiddled shelf above that.

Across from the desk on starboard is entry into the ensuite head as well as a full length dressing mirror.

Headroom in this cabin is 6'3"; there are three overhead lights, two reading lights, two hullside ports and an overhead hatch for lighting and ventilation.

Forward head: The ensuite forward head is located on starboard. As you enter, the sink is directly ahead of you. The look, as with the rest of the boat is simple and contemporary. The composite sink is spacious and has a locker beneath it. Above the sink is a mirror with a light; there are matching medicine cabinets framing the mirror on either side.

To the right of the sink is the shower and toilet space. There are folding smoke Plexiglass panels that open up to separate the shower and sink areas. Lighting and ventilation are provided by two LED lights and an overhead hatch.

Saloon: The lines in the saloon are as everywhere else on the 44DS- clean, open and elegant, with beautiful wood finishes and lots of recessed and natural light. The 6'5" headroom contributes even more to the feeling of spaciousness.

On the starboard side is a flip table top that can accommodate eight adults. The table is operated via an electric pedestal and can be positioned for dining, as a coffee table or to create an additional 85" x 56" berth. There is storage beneath the seat cushions and behind the back cushions along the hull. Above and behind the back cushions is a shelf and four drop-front lockers that run the length of the settee. Above the lockers is a shelf with a stainless steel rail fiddle to keep things in place. Behind that shelf are a pair of hullside ports, with curtains that can stow within the recess for the ports.

Across on port is a long bench settee, with a chaise lounge cushion on the forward end. There is storage beneath and behind these cushions as well. As on starboard, there is a shelf behind the back cushions, three drop-front lockers above that with another fiddled shelf above the lockers and two more hullside ports with curtains.

The deck saloon fixed lights wrap the saloon/nav/galley space and all have accordion shades. There are opposing double hatches on centerline, two hatches over the nav station side, two over the aft end of the dinette/galley area and one more aft in the galley, so there's plenty of good ventilation regardless of the wind angle. A recessed hand rail overhead provides safe passage fore and aft in a seaway. There are eight recessed LED lights overhead for additional lighting as well as floor courtesy lighting for at night.

Nav station: The nav station is on port and aft facing, utilizing the aft end of the settee. The desk top is leather covered and has two lifting tops, providing an exceptional amount of storage space not usually found in a nav station. There is a cubby outboard on the hull below the desk, a shelf outboard and a drop-front locker above. Electronics and electrical panels are easy to reach and along the hull side. Beneath the nav desk and aft is a large door which, when opened, reveals an additional refrigerator/freezer to augment the one in the galley.

Galley: The L-shaped galley is located on starboard and with its abundant storage perfect for cruising. The countertops and double sinks are a one-piece composite, with fiddles for handholds while underway; the sinks are oriented facing forward and have a sliding cover that flips open to provide a little more space and a place for cleaning supplies while doing dishes. On the centerline end of the sink is a drawer and a pull-out trash bin; beneath the sink are two large drawers.

Moving around along the hull there is a top loading refrigerator and freezer space with sliding wire bin storage. Aft of that is the two-burner stove and oven; a large drop-front locker beneath the stove provides great pots and pans storage. To the right of the stove is a pull-out wire rack storage unit

Behind the countertop along the hull side there are six drop-door lockers that provide loads of storage. An additional refrigerator is located beneath the nav station. Headroom in the galley is 6'6"; there are two overhead lights and two overhead hatches.

Aft head: The aft head can be accessed from the saloon or the master stateroom. Entering from the saloon, the sink and counter are a one-piece composite construction to your right and along the hull. Below the sink is a locker and above it a large mirror, with medicine cabinets on either side of the mirror. Bifold Plexiglass panels open and enclose this as the shower area, with an adjustable shower wand on a bar opposite the sink. Aft of the sink is the toilet, which is electric and fresh water flush. There is a countertop that can hinge down above the toilet for additional counter space or a work bench top. Headroom in here is 6'10". There is a fixed light port, an overhead and a mirror light and an overhead hatch for ventilation.

Aft master stateroom: The full width master stateroom is absolutely gorgeous. The 80" x 74" centerline berth is two inches narrower than a king and has seating on either side. Next to each side of the bed are leather topped surfaces with storage beneath them and table lamps. Outboard of those are four drop storage lockers that run the length of the berth, with shelving space above them. Forward of that on port is a tall locker with shelves and a fiddled shelf above it. On starboard there is a tall hanging locker with double doors and a fiddled shelf above that as well. Across from the foot of the bed is the engine box, which has a fiddled counter space and a locker above that.

With the beam carried far aft and the cockpit sole raised, the cabin is very spacious and open feeling, with good space above the bed as well.

Ventilation and lighting are great, with two hullside windows and four opening ports, including two behind the head of the bed. Headroom is 6'1" on either side and 5'4" in the walk-thru portion.

- Electric saloon table pedestal for easy conversion to cocktail table height or to make a double bunk
- Recessed LED overhead lighting
- LED reading lights
- LED floor courtesy lighting
- Leather seating throughout

- Electric saloon table lift easily converts dinette to double berth
- Sliding hullside port light shades in staterooms
- Curtains in saloon hullside port lights
- Accordion shades on saloon port lights
- Premium shade/screen units on all overhead hatches
- All locker interiors are finished

GALLEY

- Double composite sink with folding/sliding cover
- Single lever water mixer with pull-out sprayer wand
- Eno two burner LPG stove with oven and broiler
- Stainless steel oven safety bar
- Pot clamps
- Dedicated LPG storage locker with overboard drain
- Two 11# aluminum LPG bottles
- Propane solenoid safety switch
- Hose connection for LPG grill ('17)
- Magma LPG grill with rail mount ('17)
- Top loading ice box with wire sliding organizer bins
- Vitrofrigo 12v. refrigerator/freezer unit
- Waeco 12v. upright refrigerator/freezer

HEADS

Forward head

- Composite countertop and integral sink
- Single lever stainless steel water mixer
- Shower stall with Plexiglas panel doors
- Single lever stainless steel shower water mixer
- Sprayer wand on adjustable height bar
- Molded nonskid floor
- Electric shower sump pump
- Jabsco Quiet Flush electric fresh water flush head

Aft head

- Composite countertop and integral sink
- Single lever stainless steel water mixer
- Fold down countertop extension over the head
- Shower stall with Plexiglas panel doors

- Single lever stainless steel shower water mixer
- Sprayer wand on adjustable height bar
- Molded nonskid floor
- Electric shower sump pump
- Jabsco Quiet Flush electric fresh water flush head

WATER SYSTEMS

- Pressure hot and cold water
- Additional water tank option increases capacity from 83 to 150 gallons
- 120V Quick 10.5 gallon hot water heater with engine heat exchanger
- Anchor washdown ('17)
- Hot/cold cockpit shower
- Rule 1100 electric bilge pump
- Manual bilge pump at helm

HULL AND DECK

- Double stainless steel bow roller
- Mantus Anchor Mate ('16)
- Mantus 55# anchor with 200' of 5/16" chain ('16)
- Anchor snubber ('16)
- Deep anchor well with recessed windlass
- Quick 1000W electric anchor windlass with remote
- Double wire lifelines
- Port, starboard and transom gates
- Forward port lifelines modified with quick release pins to create additional gate between bow pulpit and #1 stanchion
- Six 12" stainless steel mooring cleats with rub strake chafe protection
- Composite teak toe rail needs no maintenance
- Pad eyes for jack lines (8)
- Cockpit pad eye at companionway
- Stainless steel grab rails (4)
- Wide side decks for safe movement on deck
- Walk-thru transom steps to swim platform
- Telescoping stainless steel swim ladder
- Dodger with Strataglass windows, side and aft grab bars
- Three bow oversized bimini with observation windows over each helm
- Connector
- Full cockpit enclosure ('16)
- 6'6" long cockpit seats provide lots of seating and sleeping under the stars
- Dual helm seats
- Teak cockpit sole and seats

- Three large cockpit lazarettes
- Centerline cockpit table with solid teak top and drop leaves, cup holders, bin storage, lamp and grab rails
- Self-stowing companionway door
- Companionway slider with Outland hatch cover for shade protection
- Line organizer locker under cockpit sole at companionway
- Sheet tail and winch wells under each outboard helm seat
- Eight topsides fixed ports
- Six housetop fixed lights in saloon and aft head
- Four opening ports
- Eleven overhead hatches with shade/screens
- Two coats of bottom paint using Micron CSC Black (11/17)

SAILS AND RIGGING

- Facnor roller furler
- Sparcraft deck stepped aluminum double spreader mast and boom
- In-mast furling
- Sparcraft rigid boom vang
- Inboard mounted 1 x 19 stainless steel shrouds keep the decks clear to move about
- All lines are led aft to the cockpit beneath a false deck
- Asymmetrical tack on bow roller
- Asymmetrical spinnaker with dousing sock
- Technique jib
- Jib serviced and UV protection replaced by North Sails ('18)
- Jib sheets replaced ('18)
- Technique in-mast mainsail
- German sheeting on main
- Spinlock deck organizer blocks (2)
- Spinlock Winchfeeder redirect block
- Spinlock triple clutches (4)
- Spinlock double clutches (2)
- Harken electric #40 two speed self-tailing control winch on housetop
- Harken electric Rewind #46 two speed self-tailing primary winches
- Courtesy flag halyard
- Winch handles

ENGINE AND MACHINERY

- Yanmar 4JH5E 54HP diesel engine with approximately 400 hours. SN# E12389
- Yanmar SD50 sail drive with Flex-O-Fold 3 blade prop

- Sail drive oil changed (11/17)
- 148 hours on the Hobbs meter (installed when Yanmar meter stopped working)
- XXX hours logged on Yanmar meter before it stopped
- Racor 500 fuel filter ('18)
- Oil changed (10/18)
- Fuel filter changed (8/18)
- Engine room exhaust blower
- Dual wheel steering
- Lewmar leather wrapped stainless steel destroyer wheels
- Lewmar steering system with stainless steel guards
- Wheel brakes
- Single lever engine control
- Max Power bow thruster
- Plastimo compasses (2)
- Navigraph fuel, water and battery monitor
- CruiseAir 8000BTU reverse cycle heat/air conditioning in forward stateroom
- Dometics 16000BTU reverse cycle heat/air conditioning in saloon upgraded ('18)
- CruiseAir HMDL2 2Kw auxiliary heating unit in saloon upgraded ('17)
- CruiseAir 8000BTU reverse cycle heat/air conditioning in aft stateroom
- CruiseAir control pad in saloon ('17)
- CruiseAir control board in saloon ('17)

ELECTRICAL

- 30A shore power connections (2)
- Two Marinco 25' EEL 30A shore power cords ('16)
- Two Marinco 50' EEL 30A shore power cords ('16)
- Marinco 50A>2-30A splitter ('19)
- Pro Mariner 60A galvanic isolator ('17)
- 120V electrical panel with amp meter
- 120V receptacles with USB ports throughout ('18)
- Additional Saloon 120V receptacle with USB port ('16)
- 12v electrical panel
- Cristec CPS3 30A battery charger
- West Marine Group 24 flooded cell batteries for windlass & bow thruster (2)
- Lifeline Group 31T AGM engine start battery ('17)
- Four Lifeline Group 31T AGM house batteries ('17)
- 12v receptacle at nav station
- LED navigation, deck and anchor lights
- Recessed LED overhead lighting
- LED floor courtesy lighting

ELECTRONIC

- Raymarine 4Kw 18" 48 mile radome
- Raymarine eSeries 9" Hybrid Touch multifunction display
- Scanstrut pivoting pod mount for display with custom safety bar around the plotter
- Raymarine p70 autopilot
- Raymarine i70 Multi displays at each helm wheel
- Airmar DST800 triducer ('18)
- Raymarine Ray55 VHF with DSC at nav
- Raymarine RAM mic at helm
- Two Standard Horizon HX100 floating VHF hand held radios ('18)
- Simrad Sonic Hub marine audio server with remote
- Fusion MS-NRX300 stereo (still in the box-not installed)
- Bose sound system with Bose Cube speakers and Bluetooth
- Cockpit speakers
- Samsung 24" LED flat screen TV on piloting bracket ('16)
- Hinkley loop masthead TV antenna
- Motorola SBG6580 Surfboard cable modem
- Cisco DPH-154 wireless cell signal booster

OTHER EQUIPMENT

- Apex 10' RIB ('16)
- Custom Kato Marine dinghy davits with reinforced mounts
- LED stern light relocated to davit spreader bar (not obstructed by dinghy)
- Yamaha 15HP 4 stroke outboard motor with electric start ('16)
- Kato outboard engine hoist
- Edson outboard motor pad
- Lifesling II MOB system ('17)
- PFD's
- Boat hooks
- Dock lines
- Fenders
- Horn, bell, flares, fire extinguishers
- Emergency tiller
- Custom closed cell foam cockpit cushions
- Winch handle holder
- Winch covers
- Cockpit table cover
- Yanmar parts kit
- Jeanneau owner's manual and ship's equipment papers
- Yanmar manuals
- Assorted service books (e.g. Nigel Calder's 12v. electric, diesel engine, etc.)

- Closed cell foam added for additional insulation in saloon; additional foam on board for further insulating
- Caframo Sirocco II fans- new in box, not installed (3)
- Hatch screen for companionway slider
- Yeti Tundra 65 cooler
- Taylor Made 3-step boarding steps
- Kasco deicer ('18)
- Bottom cleaned monthly in season

Basic Information

Category: Deck Saloon

Sub Category: Cruising Sailboat

Model Year: 2012

Year Built: 2012

Country: United States

Coast Guard #: 1253886

Vessel Top: Enclosed

Cockpit: Yes

Dimensions

LOA: 44' 0" (13.41m)

LWL: 39' 4" (11.99m)

LOD: 42' 7" (12.98m)

Beam: 13' 10" (4.22m)

Min Draft: 5' 2" (1.57m)

Clearance: 64' 4" (19.61m)

MFG Length: 43' 9" (13.34m)

Speed, Capacities and Weight

Displacement: 21495 Pounds

Water Capacity: 130 Gallons

Holding Tank: 25 Gallons

Fuel Capacity: 53 Gallons

Accommodations

Total Cabins: 2

Sleeps: 6

Total Heads: 2

Hull and Deck Information

Hull Material: Fiberglass

Deck Material: Fiberglass Sandwich

Hull Color: White

Hull Finish: Plastic

Hull Designer: Phillippe Briand

Exterior Designer: Phillippe Briand

Engine Information

Engines: 1

Manufacturer: Yanmar

Model: 4JH5E

Engine Type: Sail Drive

Fuel Type: Diesel

PHOTOS

Great cockpit and room to entertain



Fantastic saloon area



Modern galley with clean lines



Master king centerline aft



Centerline queen forward



In her slip



Clean, wide side decks keep things safe



Housetop deck is sleek and unobstructed



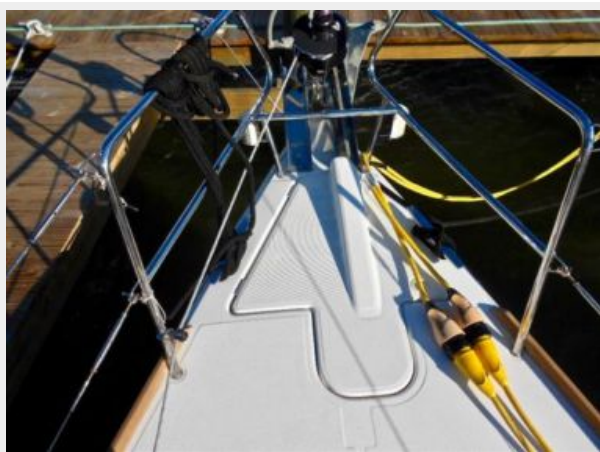
German main sheeting



All lines are led aft under the decks



The windlass is mounted below deck as well A beefy Mantus anchor and all chain rode



Looking aft- clean lines and plenty of deck lounging space



Jib and double-ended main sheets go under the deck as well, reducing trip hazards



In mast furling makes handling lines from the cockpit easy!



Dual wheels, a great cockpit table and plenty of seating for guests (or room to stretch out!)



Touch screen multi display with custom guard

View forward from the helm



Great lounging space and three large cockpit lazarettes

Primary winches are within easy reach of each helm.



Harken Rewind two-speed reversing electric winches and a bow thruster make things easy



Electric two-speed halyard winch on port



Lines on starboard go around the Spinlock block and over to the electric winch



Line tails stow away beneath the self-stowing companionway boards



Clean lines and loads of storage in the galley



Looking down into the saloon



On port, the nav with double leather desktops and settee



Loads of storage beneath and behind the settees



Locker beneath the nav station....



..Conceals the optional second fridge/freezer



The dinette on starboard with electrically operated table



Leather top desk on port in the forward stateroom



With computer storage beneath the top



Forward stateroom with centerline queen berth



Looking into the forward ensuite head



Fresh water flush electric heads



Folding Plexiglass panels swing easily to separate the shower



Six lockers above the countertop and plenty of storage below as well



Drawers and bin storage below



The sink cover folds and slides back to open up the sinks and provide a place for sponges and soap while you wash



Sliding rack organizers and a bin freezer to the left



Above counter lockers all opened



Centerline king berth in the master stateroom aft; note the leather nightstand spaces



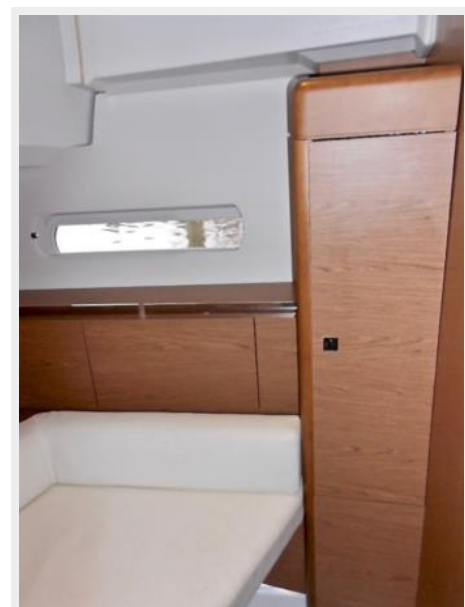
Double hanging lockers on starboard, with nice seating areas on either side



More storage beneath the nightstand spaces on either side



Lockers along the hull on either side; a tall locker with shelves on port



Countertop extension folded up



Plexiglass bi-fold panels swing into place for showering



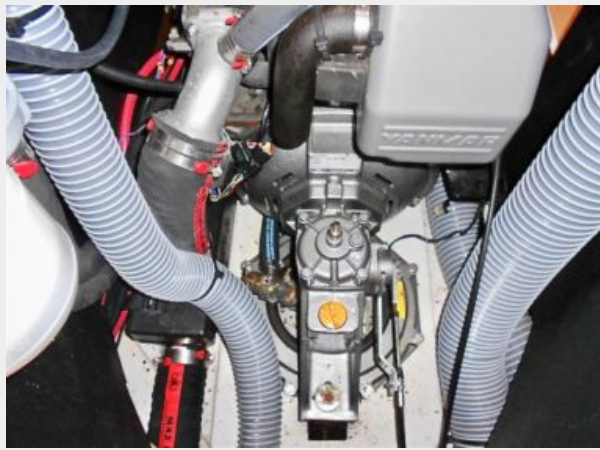
Aft head is accessible from the aft cabin or saloon. Note the countertop extension over the head. Workbench?



A super clean Yanmar with under 400 hours!



Saildrive compartment looks almost new as well



2016 Avon 10' RIB has hardly been used



Yamaha electric start 15HP engine



Lifting crane for outboard



"SUNDAY KINDA LOVE" at anchor



SUNDAY KINDA LOVE



Flying her chute



Off the wind



Jeanneau 44 DS sail plan



Jeanneau 44 DS deck layout



Jeanneau 44 DS two cabin layout



Experience you can depend on



CONTACTS

Andrey Shestakov, leading yacht broker of the sales department of Shestakov Yacht Sales Inc. Shestakov Yacht Sales Inc., the official representative of the Miami/Fort Lauderdale FL headquarters.

Contact details

Email: andrey@shestakovyachtsales.com

Web: shestakovyachtsales.com/en/

Telephones

USA: +1(954)274-4435

Office hours

Monday – Saturday: **9:00 - 21:00** EDT

Sunday: **closed**

Address



Harbour Towne Marina, 850 NE 3rd St,
STE 213, Dania, FL 33004