

NORMA JEAN — SCHUCKER



Builder: SCHUCKER

Year Built: 1978

Model: Motorsailor

Price: PRICE ON APPLICATION

Location: United States

LOA: 40' 0" (12.19m)

Beam: 14' 0" (4.27m)

Max Draft: 3' 8" (1.12m)

Our experienced yacht broker, Andrey Shestakov, will help you choose and buy a yacht that best suits your needs **Norma Jean — SCHUCKER** from our catalogue. Presently, at Shestakov Yacht Sales Inc., we have a wide variety of yachts available on our sale's list. We also work in close contact with all the big yacht manufacturers from all over the world.

If you would like to buy a yacht **Norma Jean — SCHUCKER** or would like help answering any questions concerning purchasing, selling or chartering a yacht, please call **+1(954)274-4435**

TABLE OF CONTENTS

TABLE OF CONTENTS	2
SPECIFICATIONS	6
Overview	6
Basic Information	6
Dimensions	6
Speed, Capacities and Weight	6
Accommodations	7
Hull and Deck Information	7
Engine Information	7
DETAILED INFORMATION	8
Features	8
Exclusions	9
Disclaimer	10
PHOTOS	11
Starboard Aft	11
Bow Starboard	11
Bow Port	11
Port	11
Port Aft	11
Dinghy w Outboard	11
Transom Storage	12
Transom Bench Seating	12
Stainless Steel Magna Grill	12
Rear Deck	12
Rear Deck Storage	12
Easy Access to Bow Starboard	12
Easy Access to Bow Port	13
Bow Top Side	13

Stairs to Upper Hard Top	13
Hard Top	13
2 - 15 Amp Solar Panels	13
Lowrance Radar	13
Wind Generator	14
Bow View From Hard Top	14
Interior View From Rear Entrance	14
Port Settee	14
Starboard Settee	14
Navigation Station	14
Electric Captains Chair	15
Helm	15
Lowrance GPS, Chart Plotter, Fish, Depth and Radar	15
Raymarine Auto Pilot	15
VHF Radio w Distress	15
Remote for Auto Pilot	15
Bow Thruster Controls	16
Anchor Windlass Controls	16
Gauges	16
Helm Breakers	16
Breaker Switches Below Helm	16
Overhead Breakers	16
Large U-Shaped Dinette	17
Galley to Rear	17
Galley To Forward	17
Microwave	17
Princess 3 Burner Stove and Oven - Gimbled	17
Refrigerator w Cold Plate	17
Regular Refrigerator	18

Refrigerator Opened	18
Forward Cabin	18
Queen Bed	18
Flat Screen Color TV	18
Enclosed Head w Seperate Shower	18
Composte Toilet	19
FW Sink	19
Fresh Water Shower	19
Hanging Closets	19
Hanging Closet Forward	19
hanging Closet Aft	19
Engine Room	20
Engine Room	20
Engine Room	20
Engine Room	20
Perkins 4-108	20
Transmission	20
Phasor Generator	21
GE Water Heater	21
Washer / Dryer	21
Spare Parts	21
Tool Box	21
15 Amp On Board Barttery Charger	21
Very Clean Bilge	22
Manufacture Drawings	22
CONTACTS	23
Contact details	23
Telephones	23
Office hours	23

Address

23

SPECIFICATIONS

Overview

Good Quality, High Demand, Motorsailer!! Must See!! Engine Room Spotless!! Seller is currently living aboard and uses it for sunset cruises. He is a Master Captain and the boat is kept ship shape. The has all of the features you would need and want for a live aboard on the hook. Water stored on the moorings in the Fabulous Florida Keys. *2ea. Mainsails, *2a. Furling Genoa, *Spinnaker, *Perkins 4108 Diesel Engine - 972 Hours (Complete rebuild by former owner - no receipts), *2015 Phasor Marine Generator - 1500 Hours, *Bow Thruster, *Anchor Windlass, *Hydraulic Steering, *All New Electronics, *GPS, *Chart Plotter, *Fish and Depth, *Radar, *Auto Pilot, *Air Conditioning and Heat, *Washer/ Dryer, *2ea. 15 Amp Solar Panels, * Wind Generator, *Hard Bottom Dinghy w Outboard, *

Basic Information

Category: Motorsailor

Model Year: 1978

Year Built: 1978

Country: United States

Dimensions

LOA: 40' 0" (12.19m)

LWL: 33' 0" (10.06m)

Beam: 14' 0" (4.27m)

Max Draft: 3' 8" (1.12m)

Clearance: 42' 0" (12.80m)

Speed, Capacities and Weight

Displacement: 26000 Pounds

Water Capacity: 200 Gallons

Fuel Capacity: 200 Gallons

Accommodations

Total Cabins: 1

Total Berths: 4

Total Heads: 1

Hull and Deck Information

Hull Material: Fiberglass

Engine Information

Engines: 1

Manufacturer: Perkins

Model: 4-108

Engine Type: Inboard

Fuel Type: Diesel

DETAILED INFORMATION

Features

BROKERS WALK THRU A very well cared for live aboard motorsailer that is used as a live aboard by a knowledgeable Master Captain. She is currently moored in the Florida Keys and is turn key and water ready. This boat is ready to run and ready to live aboard for the new buyers. She can be kept at her current moorings. Mooring fee is currently three hundred forty-eight dollars a month. With tax. This boat was just brought down from Titusville to Marathon in January 2019. She did 4 trips to the Bahamas in 2018 and ran perfectly. This boat is extremely clean, well cared for and in prime waters. It will not last long as she is very well priced.

MECHANICAL REBUILD The previous owner pulled the engine, rebuilt it and painted it. He repainted the engine room and it looks fantastic. Before installing the engine a brand new Generator was installed. There are no receipts on the engine rebuild. The work was done 2-3 years ago. SAILS AND RELATED

- 2 ea. Mainsails - Both Good Condition
- 2ea. Head Sails - Both Good Condition
- 1ea. Spinnaker - Brand New - Never Used
- Roller Furling for Head Sail
- Standing Rigging - Good
- Running Rigging - Fair
- 2ea. Two Speed 30 Lewmar Winches
- 4ea. One Speed 8 Lewmar Winches
- 1 ea. One Speed 6 Lewmar Winches
- Spinnaker Pole

INTERIOR ACCOMMODATIONS

- 3ea. Entry Doors. To Port, To Starboard and Rear Entry.
- Large Forward Cabin w Queen Berth and Two Huge Hanging Closets - Flat Screen Color TV
- Enclosed Head w Compost Toilet and a Separate Fresh Water Shower
- Large Step Down Galley w Ample Storage. In Counter Refrigerator w Cold Plate. Small Magic Chef Refrigerator. Princess 3 Burner Propane Stove and Oven Gimbled. Rival Microwave.
- Lower Helm w Steering Wheel, Electric Captains Chair AND NEW Electronics
- Settee's To Port and Starboard
- New Wood Flooring

MECHANICAL

- Absolute Immaculate Engine Room w Auto LED Lights
- Perkins Diesel 4108 50 HP - 972 Hours - Fresh Water Cooled
- 2016 Phasor Marine 7.5Kw Generator - 1500 Hours

- C-Marine Bow Thruster
- Anchor Windlass
- 2 ea. Bilge Pumps

ELECTRONICS

- Autohelm Digital Depth Finder
- New Raymarine Auto Pilot w Portable Remote and Docking Station
- New Lowrance HDS 10 Color GPS, Chart Plotter, Fish, Depth and Radar
- Flat Screen Color TV
- Marine VHF Radio w Distress

ELECTRICAL

- Twin 30 Amp Shore Power
- Air Conditioning and Heat 2 Units (1 - 12KW , 1 - 9Kw)
- Water Heater
- Splendide Washer / Dryer
- Battery Charger - On Board 15 Amp
- 3 Batteries
- Dual Battery Switch
- Xantrex Battery Monitor
- Blue Sky Solar Monitor
- 2 ea. Solar Panels - 15 Amps each
- Wind Generator
- Inverter
- Under Water Lights
- New LED Interior and Exterior Rope Lights - Look Magnificent at Night

MISC

- Swim Platform
- Swim Ladder
- Hard Bottom Dinghy
- 6 HP 4 Stroke Yamaha
- Home Made Dinghy Davits
- Splendide Washer / Dryer
- 1 - Plough Anchor
- 1 - Danforth Anchor

Exclusions

Owner's personal belongings.

Disclaimer

The Company offers the details of this vessel or yacht in good faith but cannot guarantee or warrant the accuracy of this information nor warrant the condition of the vessel. A buyer should instruct his representatives, agents, or his surveyors, to investigate such details as the buyer desires validated. This vessel or yacht is offered subject to prior sale, price change, or withdrawal without notice.

PHOTOS

Starboard Aft



Bow Starboard



Bow Port



Port



Port Aft



Dinghy w Outboard



Transom Storage



Transom Bench Seating



Stainless Steel Magna Grill



Rear Deck



Rear Deck Storage



Easy Access to Bow Starboard



Easy Access to Bow Port



Bow Top Side



Stairs to Upper Hard Top



Hard Top



2 - 15 Amp Solar Panels



Lowrance Radar



Wind Generator



Bow View From Hard Top



Interior View From Rear Entrance



Port Settee



Starboard Settee



Navigation Station



Electric Captains Chair



Helm



Lowrance GPS, Chart Plotter, Fish, Depth and Radar



Raymarine Auto Pilot



VHF Radio w Distress



Remote for Auto Pilot



Bow Thruster Controls



Anchor Windlass Controls



Gauges



Helm Breakers



Breaker Switches Below Helm



Overhead Breakers



Large U-Shaped Dinette



Galley to Rear



Galley To Forward



Microwave



**Princess 3 Burner Stove and Oven -
Gimble**



Refrigerator w Cold Plate



Regular Refrigerator



Refrigerator Opened



Forward Cabin



Queen Bed



Flat Screen Color TV



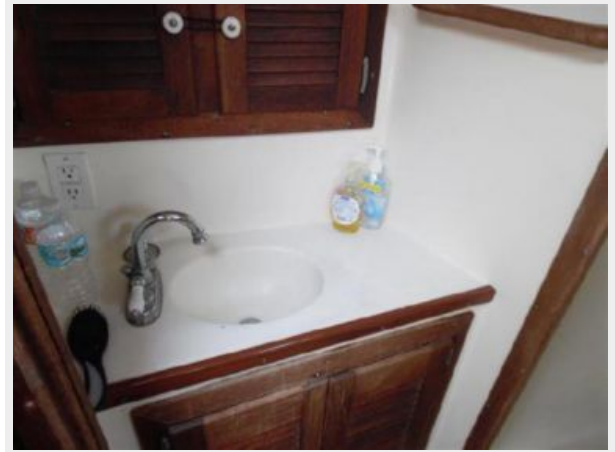
Enclosed Head w Seperate Shower



Composte Toilet



FW Sink



Fresh Water Shower



Hanging Closets



Hanging Closet Forward



hanging Closet Aft



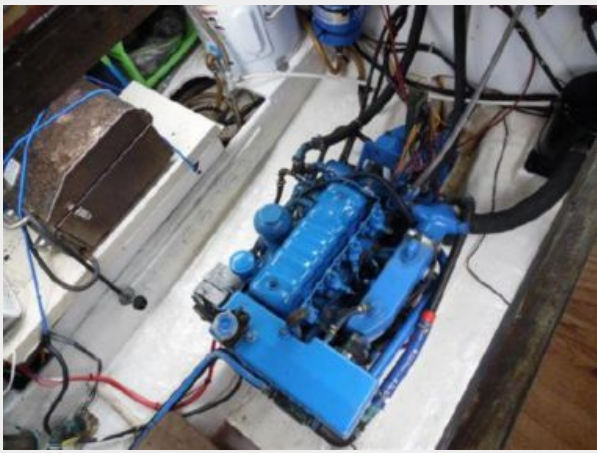
Engine Room



Engine Room



Engine Room



Engine Room



Perkins 4-108



Transmission



Phasor Generator



GE Water Heater



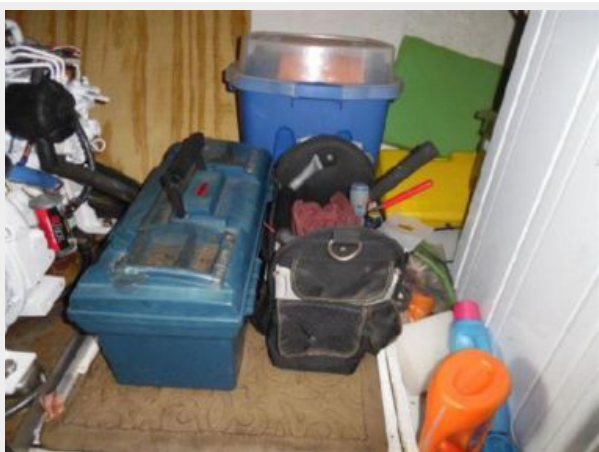
Washer / Dryer



Spare Parts



Tool Box



15 Amp On Board Battery Charger



CONTACTS

Andrey Shestakov, leading yacht broker of the sales department of Shestakov Yacht Sales Inc. Shestakov Yacht Sales Inc., the official representative of the Miami/Fort Lauderdale FL headquarters.

Contact details

Email: andrey@shestakovyachtsales.com

Web: shestakovyachtsales.com/en/

Telephones

USA: +1(954)274-4435

Office hours

Monday – Saturday: **9:00 - 21:00** EDT

Sunday: **closed**

Address



Harbour Towne Marina, 850 NE 3rd St,
STE 213, Dania, FL 33004