

## TABULARASA — RAMPAGE



**Судостроитель:** RAMPAGE

**Год постройки:** 2005

**Модель:** Sport Yacht

**Цена:** ЦЕНА ЯХТЫ ПО ЗАПРОСУ

**Местонахождение:** United States

**Длина общая:** 38' 0" (11.58m)

**Ширина:** 13' 9" (4.19m)

**Макс. осадка:** 3' 6" (1.07m)

Купить **Tabularasa — RAMPAGE** а также выбрать подходящую вам яхту из нашего каталога яхт вам поможет опытный яхтенный брокер Андрей Шестаков. На сегодняшний день компания **Shestakov Yacht Sales Inc.** имеет большое количество яхт в собственном списке продаж, а также тесно сотрудничает со всеми крупными яхтенными производителями по всему миру.

Для того чтобы купить яхту **Tabularasa — RAMPAGE** а также проконсультироваться по любому вопросу связанному с покупкой, продажей, чартером яхт позвоните по телефону **+7(918)465-66-44**.

# ОГЛАВЛЕНИЕ

ОГЛАВЛЕНИЕ	2
ХАРАКТЕРИСТИКИ	5
Обзор	5
Основная информация	5
Размеры	6
Скорость, вместимость и масса	6
Размещение	6
Корпус и палуба	6
Информация о двигателе	6
ПОДРОБНОЕ ОПИСАНИЕ	7
Main Cabin / Galley	7
Forward Stateroom	7
Head	7
Helm Deck	8
Electronics and Navigation Equipment	8
Engine Room and Mechanical Equipment	8
Deck Equipment	9
Hull and Construction	9
Disclaimer	9
Исключения	10
Отказ от ответственности	10
ФОТОГРАФИИ	11
Main Cabin	11
Cabin TV	11
Galley	11
Galley	11
Galley	11
Main Distribution Panel	11

Master Stateroom	12
Master Stateroom	12
Master Head	12
Master Stateroom	12
Mid Cabin Berth	13
Mid Cabin Berth	13
Lower Helm	13
Lower Helm Seating	13
Lower Helm Electronics	13
Electrical System	13
Engine Room	14
Engine Room	14
Engine Room	14
Engine Room	14
Engine Room	14
Engine Room	14
Engine Room	15
Cockpit Wetbar	15
Cockpit	15
Cockpit	15
Cockpit Fridge / Freezer	15
Cockpit Fishboxes	15
Cockpit Fishbox	16
Cockpit Livewell	16
Cockpit	16
Tower Helm	16
Tower Helm Seating	16
Life Raft and Radar	16
Epirb	17

---

Lift Raft	17
Cockpit from Tower	17
Walkway to Bow	17
Bow Railing	17
Foredeck	17
Foredeck	18
Anchor System	18
Profile	18
Profile	18
Profile	18
Profile	18
Profile	18
Profile	19
Profile	19
Profile	19
Profile	19
Profile	19
Profile	19
КОНТАКТЫ	20
Контактная информация	20
Телефоны	20
Время работы	20
Адрес	20

# ХАРАКТЕРИСТИКИ

## Обзор

This Rampage is truly turnkey and ready to fish! One of the few boats out there with a full tower, outriggers and swim platform.

The owner has recently upgraded all electronics on board and completed all engines service with after-cooler replacement. This boat is perfect for a couple that enjoys cruising and fishing. The boat handles rough water extremely well and recently completed a great trip around the Florida coast and the Bahamas exotic islands.

This boat has the upgraded Cummins diesel engines with electronics shifters which makes docking and maneuvering in the marina super easy.

- September 2018 new after-cooler
- September 2018 new bottom paint including prop speed on all running gear
- May 2018 Two New Simrad 12" touchscreen chart plotters at the main helm
- May 2018 New Simrad 9" touchscreen chart plotter in the tower
- May 2018 New Open Array Radar
- May 2018 New Fusion stereo with speakers at the helm and aft cockpit
- September 2017 New inverter installed
- Epirb
- Life Raft
- Engine, Transmission, and Generator service completed in June 2019

Conveniently Located in Tampa, Fl. Call today for a full showing.

## Основная информация

**Тип судна:** Sport Yacht

**Подкатегория:** Convertible

**Модельный год:** 2005

**Год постройки:** 2005

**Страна:** United States

**Регистрационный номер:** 00188729

**Открытая палуба мостика:** Да

**Кубрик:** Да

## Размеры

---

**Длина общая:** 38' 0" (11.58m)

**Ширина:** 13' 9" (4.19m)

**Макс. осадка:** 3' 6" (1.07m)

**Длина привального бруса:** 38' 0"  
(11.58m)

## Скорость, вместимость и масса

---

**Водоизмещение:** 24000 Pounds

**Вместимость воды:** 90 Gallons

**Вместимость сточного бака:** 30 Gallons

**Объем топливного бака:** 400 Gallons

## Размещение

---

**Всего кают:** 3

**Спальные места:** 6

**Всего ком. состава:** 2

## Корпус и палуба

---

**Материал корпуса:** Fiberglass

## Информация о двигателе

---

**Двигатели:** 2

**Производитель:** Cummins

**Модель:** QSC 8.3

**Тип двигателя:** Inboard

**Тип топлива:** Diesel

---

# ПОДРОБНОЕ ОПИСАНИЕ

---

## Main Cabin / Galley

---

- Satin finish cherry wood interior
- Teak & holly sole
- 7' headroom
- U-shaped lounge w/solid rectangular cherry wood table converts to double berth
- Skylight above dinette
- (4) opening portlights w/blinds & screens
- Aft bulkhead rod storage
- Clarion Stereo
- CO2 monitor
- Tappan microwave oven w/turntable
- Princess Gourmet (2) burner ceramic cooktop
- Tundra 4.2 cubic foot AC/DC refrigerator w/freezer compartment
- Solid surface counter top w/integrated sink & single lever faucet
- Overhead & under counter storage cabinets
- Sharp Aquos 15" LCD TV
- Panasonic DVD player
- Cruisair SMXir electronic climate controls

## Forward Stateroom

---

- Double berth mattress & storage beneath
- Under berth storage drawers
- Cedar lined hanging locker
- (3) Overhead storage cabinets
- Storage drawer
- Sharp Aquos 15" LCD TV
- (3) rod holders
- Forward mirror
- Privacy curtain
- Overhead Bomar hatch w/Oceanair sliding screen & shade

## Head

---

- Thetford Tecma marine toilet system
- Cherry wood vanity w/storage cabinet & sink
- Framed mirror
- Shower stall w/circular acrylic sliding shower door & handheld shower

- Ventilation fan Solid cherry wood door
- Overhead Bomar hatch w/Oceanair screen/shade
- Opening portlight w/screen

---

## Helm Deck

---

- Pompanette ladder back companion chair w/cushions
- L-shaped cushioned lounge seating w/storage below
- Centerline helm console w/tilting Edson stainless steel wheel w/control knob
- Tackle storage compartment
- Sliding bi-fold hatch w/acrylic lockable cabin door
- Chart compartment w/clear acrylic cover
- Cruisair 16,000 BTU reverse cycle air conditioning unit
- Anodized aluminum windshield w/electrically actuated center vent
- (4) sided enclosure

---

## Electronics and Navigation Equipment

---

All Simrad electronics were replaced 2018

Lower Helm:

- Twin Simrad NSS 12" touch screen multi function display
- Simrad Halo Pulse Compression Open Array Radar
- Simrad AP25 Autopilot
- Clarion Stere remote
- Icom IC-M604 VHF transceiver w/remote mic
- Ritchie compass
- SmartCraft engine display
- ACR RCL-75 remote control search light control
- ZF Mathers electronic control head

Tower Station:

- Simrad NSS 9" multi function display
- ACR RCL-75 remote search light control
- ZF Mathers electronic control head

---

## Engine Room and Mechanical Equipment

---

- Twin Cummins QSC 8.3 540 HP diesel engines w/1422 hrs.
- ZF reduction gears w/1.78:1 ratios & trolling valves
- (2) Separ SWK 2000 10D fuel filters (main engines)



- Separ 2000 5D fuel filter (generator)
- ZF Mathers electronic controls
- Oil change system
- Seastar hydraulic steering system
- Tides driplless shaft seals
- 4 blade nibral propellers
- Cruisair reverse cycle air conditioning, (2) compressors, 30,000 BTU total
- 11 gallon stainless steel water heater
- Bronze rudders
- Bronze struts
- Bennett hydraulic trim tabs
- Fireboy automatic halon fire suppression system
- (4) Rule 12V automatic manual bilge pumps
- 12V sump pump
- 12V macerator pump

---

## Deck Equipment

---

- 316 stainless steel 1 ¼" bow rail
- Bow pulpit w/polished stainless steel anchor roller
- Maxwell® RC 800 Windlass w/foot switches
- Fortress® Anchor w/25' of chain and 300' rode
- Heavy duty rubrail w/stainless steel insert
- (3) heavy duty windshield wipers w/self parking pantograph arms & washers
- International navigation lights
- ACR RCL-75 remote search light
- (3) Bomar deck hatches

---

## Hull and Construction

---

- Double stringer bulkhead construction
- 316 stainless steel hull side through-hull fittings
- Bronze underwater through-hull fittings
- Vinylester resin barrier coat

---

## Disclaimer

---

The Company offers the details of this vessel in good faith but cannot guarantee or warrant the accuracy of this information nor warrant the condition of the vessel. A buyer should instruct his agents, or his surveyors, to investigate such details as the buyer desires validated. This vessel is offered subject to prior sale, price change, or withdrawal without notice.

Mechanical Disclaimer Engine and generator hours are as of the date of the original listing and are a representation of what the listing broker is told by the owner and/or actual reading of the engine hour meters. The broker cannot guarantee the true hours. It is the responsibility of the purchaser and/or his agent to verify engine hours, warranties implied or otherwise and major overhauls as well as all other representations noted on the listing.

## **Исключения**

---

При продаже яхты исключаются личные вещи владельца.

## **Отказ от ответственности**

---

Компания предоставляет описание судна или яхты добросовестно, но не может гарантировать точность этой информации, а также не ручается за техническое состояние. Покупатель должен проинструктировать своих агентов или оценщиков исследовать представленную информацию более подробно, по собственному желанию. Продажа судна или яхты, изменение цены или снятие с продажи будет происходить без предварительного уведомления.

# ФОТОГРАФИИ

**Main Cabin**



**Cabin TV**



**Galley**



**Galley**



**Galley**



**Main Distribution Panel**



**Master Stateroom**



**Master Stateroom**



**Master Stateroom**



**Master Head**



**Mid Cabin Berth**



**Mid Cabin Berth**



**Lower Helm**



**Lower Helm Seating**



**Lower Helm Electronics**



**Electrical System**



**Engine Room**



**Engine Room**



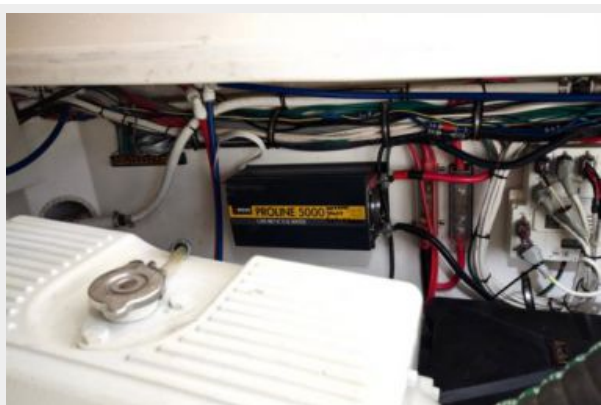
**Engine Room**



**Engine Room**



**Engine Room**



**Engine Room**



**Engine Room**



**Cockpit Wetbar**



**Cockpit**



**Cockpit**



**Cockpit Fridge / Freezer**



**Cockpit Fishboxes**



**Cockpit Fishbox**



**Cockpit Livewell**



**Cockpit**



**Tower Helm**



**Tower Helm Seating**



**Life Raft and Radar**





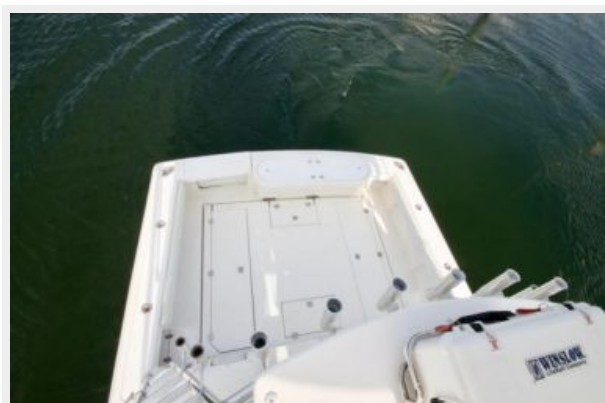
**Lift Raft**



**Epirb**



**Cockpit from Tower**



**Walkway to Bow**



**Bow Railing**



**Foredeck**



**Foredeck**



**Anchor System**



**Profile**



**Profile**



**Profile**



**Profile**



**Profile**



**Profile**



**Profile**



**Profile**



**Profile**



# КОНТАКТЫ

---

Андрей Шестаков (Andrey Shestakov) – ведущий яхтенный брокер отдела продаж яхт и судов компании Shestakov Yacht Sales Inc. Официальный представитель Shestakov Yacht Sales Inc. для русскоговорящих клиентов в центральном офисе компании в Майами/Форт Лодердейл/Флорида/США.

## Контактная информация

---

Email: [andrey@shestakovyachtsales.com](mailto:andrey@shestakovyachtsales.com)

Web: [shestakovyachtsales.com](http://shestakovyachtsales.com)

## Телефоны

---

Краснодарский край: **+7(918)465-66-44**

США, Майами, Флорида: **+1(954)274-4435**

## Время работы

---

Понедельник – Суббота: **9:00 - 21:00**  
EDT

Воскресенье: **Закрето**

## Адрес

---



Harbour Towne Marina, 850 NE 3rd St,  
STE 213, Dania, FL 33004