

NO NAME — SEA RAY



Судостроитель: SEA RAY

Год постройки: 2006

Модель: Крейсер

Цена: **ЦЕНА ЯХТЫ ПО ЗАПРОСУ**

Местонахождение: Canada

Длина общая: 45' 0" (13.72m)

Ширина: 14' 0" (4.27m)

Макс. осадка: 3' 5" (1.04m)

Крейс. скорость: 28 Kts. (32 MPH)

Макс. скорость: 32 Kts. (37 MPH)

Купить **No Name — SEA RAY** а также выбрать подходящую вам яхту из нашего каталога яхт вам поможет опытный яхтенный брокер Андрей Шестаков. На сегодняшний день компания **Shestakov Yacht Sales Inc.** имеет большое количество яхт в собственном списке продаж, а также тесно сотрудничает со всеми крупными яхтенными производителями по всему миру.

Для того чтобы купить яхту **No Name — SEA RAY** а также проконсультироваться по любому вопросу связанному с покупкой, продажей, чартером яхт позвоните по телефону **+7(918)465-66-44**.

ОГЛАВЛЕНИЕ

ОГЛАВЛЕНИЕ	2
ХАРАКТЕРИСТИКИ	3
Обзор	3
Основная информация	9
Размеры	9
Скорость, вместимость и масса	9
Размещение	9
Корпус и палуба	9
Информация о двигателе	10
ФОТОГРАФИИ	11
КОНТАКТЫ	16
Контактная информация	16
Телефоны	16
Время работы	16
Адрес	16

ХАРАКТЕРИСТИКИ

Обзор

The bold styling of the 44' Sundancer is unmistakable Sea Ray with her stylish European grace and bold American power. This 44' Sundancer comes exceptionally equipped with the upgraded Hardtop, Cummins QSC 500's, Sea Ray Navigator II package, Raymarine E-120 with radar and autopilot, and much more. The 44' Sundancer rides on a deep-V hull with prop pockets to reduce shaft angle and draft. Her cockpit is expansive with room to entertain a crowd. Access to machinery is provided at the touch of a button as the entire aft sole raises to provide a generous view of the engine room.

Below decks, the Sundancers lavish mid-cabin interior is an impressive display of lacquered cherry woodwork, leather settees, and deep pile carpeting. Privacy doors (not curtains) separate the cabins from the salon and the large galley area features generous storage and plenty of counter space. Topside, wide sidedecks provide secure access to the foredeck and sunpad. This very clean and rare Freshwater Sea Ray 44' Sundancer is well-equipped and has always been maintained carefully. We accept trade-ins and provide financing.

Standard Features

- Bow Rail, 316 Stainless Steel w/Welded Stanchions,
- Intermediate Rails & Life Lines
- Canvas Colors (Navy, Green, Tan, Black)
- Cleats, Custom Sea Ray® Thru- Bolted - Stainless Steel (8)
- Deck Fill Plates, Stainless Steel
- Deck Rails, 316 Stainless Steel
- Drain Plugs, Brass-Threaded - Garboard
- Gel Coat, Arctic White
- Graphics, Striping
- Handrails, 316 Stainless Steel
- Hatch, Deck Vent - Translucent w/Locks & Sky Screen Cover
- (20x20) Trapezoid
- Hull Windows, Stainless Steel - Fixed
- Lights, Navigation
- Light, Stern
- Portlights, Stainless Steel (2 Opening)
- Resin, High-Performance Vinylester
- Rub Rail, PVC w/Stainless Steel Insert
- Skylight, Flush-Mount w/Retractable Sunshade - Salon
- Storage, Transom Wall - (For Fenders & Gear)
- Stringer System, Fiberglass
- Swim Platform, Hydraulic
- Three-Step Swim Ladder w/Integral Grab Handle

- Thru-Hull Fittings, Stainless Steel
- Toe Rail, Molded Fiberglass - Deck
- Vent System, Engine Room - Integral
- Windshield, Tempered/Tinted Curved Glass w/Stainless Steel Frame, Electric Front Vent & Stainless Steel Supports
- Windshield Washer System
- Windshield Wipers w/Delay & Speed Control

Installed Options

- Twin Cummins QSC 500 (478 HP)
- Wheaton Carpet
- Cherrywood high gloss Finish
- ACR Spotlight with remote
- Cockpit A/C and Heat
- Dash Cover
- Raymarine E-120 Chartplotter
- Raymarine 48 Mile Radar with 4KW open array antenna
- Raymarine Depthsounder
- Raymarine Autopilot ST 7001
- Sea Ray Navigator II 12.1" LCD touchscreen plotter
- Cockpit LCD TV 17"
- Midberth LCD TV 15"
- Fiberglass Hardtop with Full Enclosure
- Upgraded Onan 9.0 kW Generator
- Macerator with Seacock interlocking system
- Cockpit refrigerator
- Rod Holders (2)
- Power-Assisted Steering
- Forward Deck Sunpad
- Vacuum System
- Yacht Flag and Flag pole
- Midnight Blue Hull Gelcoat
- Navy Sunbrella Canvas
- Interior Upgrade package (D Royal Ensemble) Includes counter tops, upholstery and soft goods

Galley

- Blinds, Wood
- Coffeemaker, 120V
- Countertop, Solid Surface
- Sink, Single-Lever Grohe® Faucet & Sink Cover
- Freezer, Under-Counter - Dual- Voltage - 120V/12V (Waeco®)
- Handrail, Stainless Steel

- Microwave/Convection Oven, 120V
- Outlet, 12V Accessory
- Power Vent, 12V, w/Stainless Grill
- Refrigerator, Under-Counter - Dual- Voltage - 120V/12V (Waeco)
- Storage, Drawers w/Cutlery Insert
- Storage, Upper & Lower w/Designated Plate & Glass Storage
- Stove, 120V Recessed Two-Burner w/Solid Surface Cover (Kenyon®)
- Trash Receptacle w/Chute & Solid Surface Cover

Salon

- Blinds, Wood End Table, Solid Surface w/Lift-Out Storage
- Mirror, Wall Accent
- Seating, L-shaped Sofa w/Storage Below - Converts to Bed w/Filler Cushions (Ultraleather HP™)
- Storage, Gunwale Cabinets
- Table, Dinette w/High-Gloss Wood Surface & Dedicated Storage
- TV, Flatscreen LCD, Drop Down
- (120V) w/Remote DVD Player
- Coax Outlet & Gain Control Panel

Forward Stateroom

- Bed, Full-Size Island-Style w/Innerspring Mattress, Pillows, Sheets, Coordinated Spread & Drawer Storage Below
- Door, Pocket - Privacy w/Mirror
- Hanging Locker w/Light & Shelves - Port
- Hanging Locker w/Light &
- Shelves - Starboard
- Mirrored Rope Locker Bulkhead
- Storage, Gunwale Cabinets - Starboard
- TV- Flatscreen w/Remote
- Mounted DVD Player

Forward Head (Port)

- Door, Privacy - Access from Forward Stateroom
- Handrails, Stainless Steel
- Head, VacuFlush®
- Power Vent, 12V, w/Stainless Grill
- Storage, Gunwale Cabinets
- Storage, Medicine Cabinet - Mirrored
- Vanity w/Solid Surface Countertop, Sink, Grohe Faucet & Storage Below

Forward Shower (Starboard)

- Clothes Hook
- Curtain, Shower
- Door, Privacy - Access from Forward Stateroom
- Handrails, Stainless Steel
- Shower w/Seat & Adjustable Grohe
- Shower Wand

Mid Stateroom

- Door, Privacy - Sliding Pocket
- Hanging Locker - Port
- Mirrored Bulkhead - Aft
- Portlight, Stainless Steel - Fixed
- Seating, Conversation Pit - Converts to Double Berth w/Slide-Out Base
- Storage, Cabinets - Starboard

Mid Stateroom Head/Shower

- Clothes Hook
- Curtain, Shower
- Door, Privacy - Access from Mid-Stateroom
- Handrail, Elliptical Stainless Steel
- Head w/Fiberglass Settee Lid & VacuFlush® Toilet
- Storage, Medicine Cabinet
- Vanity w/Solid Surface Countertop, Sink, Faucet w/Pullout Shower
- Sprayer & Storage Below

Electronics & Navigation

- Alarms, High-Water - Bilge & Cabin Compass
- Emergency Start System - Engines
- Dash - Gel-Coated Nickel
- Horns, Air (Concealed) - Dual Trumpet
- Instrument Panel
- Shift & Throttle Controls w/Gold Knobs
- SmartCraft™ Diagnostics:
- Instrumentation, Custom Sea Ray® SmartCraft 4-in-1 Multigauges (2) w/Low-Glare Blue Night Lighting & Chrome
- Bezels (Includes: Fuel Level, Oil Pressure, Voltmeter, Water Temperature)
- SmartCraft System View (Includes: Air & Water Temperature, Combined Fuel Flow/Range, Depth, Engine Alarms/Hourmeters, Engine Synchronizer, GPS Interface & Raymarine 125 GPS Antenna System Maintenance Records)
- Steering, Hydraulic
- Steering, Tilt Wheel
- Steering Wheel, Wood-Accent

- Switch Panel (Backlit)
- Switches, Illuminated Weatherproof Rockers & Dimmer Control
- Systems Monitor, Digital LCD - for
- Pump Monitoring

Electronics:

- Electronics Circuit, 50 Amp/12V
- VHF Radio w/Remote Speaker & 8'
- Fiberglass Antenna

Electrical System

- Batteries (5) w/Trays & Switches
- Battery Charger/Converter, 120V/40
- Amp/12V
- Battery Solenoid Switches, 12V
- Latching (2)
- Isolators, Galvanic (2)
- Panel, Circuit Breaker - Remote
- Panel, DC Main Breaker
- Panel, Main Distribution - AC
- Panel, Main Distribution - DC
- Shore Power, Dual 30 Amp/120V/60
- Cycle w/50' Cords & Adapters
- TV/Phone Inlet w/TV Antenna, TV Shore Cord & Phone Shore Cord
- Wiring, Color-Coded w/Chafe Protection

Deck Equipment

- Beverage Holders (10)
- Carpet Liner, Snap-In
- Door, Cabin Entry - Curved Acrylic
- Door, Transom - Acrylic
- Floor Liner, Fiberglass - Self-Bailing
- Hatch, Engine Room - Electrically Actuated
- Ice Bucket, Insulated - Built-In
- Ice maker, 120V
- Handrails, 316 Stainless Steel
- Lighting, Indirect
- Outlet, 12V Accessory
- Outlet, 120V GFI Protected
- Seating, Companion Bench w/Molded Fiberglass Storage Base & Euro-Style Backrest
- Seating, Helm w/Flip-Up Thigh-Rise
- Bolster, Armrests & Heavy-Duty Pedestal w/Slide, Swivel & Pneumatic Vertical Adjustment

- Seating, U-Shaped - Aft
- Ship's Bell
- Sport Spoiler, Molded Fiberglass (Seamless) w/Overhead Lighting & Stainless Steel Grab Rails
- Step, Molded Deck Access
- Storage, Side Panel - Starboard
- Table, Cockpit w/Corian® Insert & Dedicated Storage
- Wet Bar w/Sink & Faucet, Corian Countertop, Stainless Steel
- Handrail, Trash Receptacle & Storage Cabinet - Port
- Carbon Monoxide Monitors
- Carpet, Deep-Pile BCF - 44-Ounce
- Carpet Runners, Interior (Sunbrella)
- Handrails, Stainless Steel
- Interior Finish - Light or Dark Cherry
- Lighting, 12V Halogen
- Lighting, 12V Indirect
- Outlet, Phone
- Outlets, 120V GFI Protected
- Outlets & Switch Plates - Satin Nickel Finish
- Pillows, Accent
- Steps, Entryway - Cherry Wood
- Stereo, Clarion® 12V AM/FM Single CD, & Sirius® Satellite Receiver w/Antenna, w/6-Disc CD Changer,
- MP3 Port, Amplifier, Subwoofer,
- Speakers (8), Digital Cockpit
- Remote Control & Speaker
- Selector Switches
- Storage, In-Floor
- Wood Trim, Handcrafted

Canvas (Sunbrella®):

- Aft Curtain
- Aft Sunshade
- Bimini Top
- Canvas Storage Bag
- Front Curtains
- Side Curtains

Windlass System:

- Anchor, Galvanized
- Anchor Chute, Stainless Steel
- Anchor Rope/Chain Storage w/Hatches (2)
- Anchor Washdown Spigot

- Windlass, Rope/Chain w/Foot
- Switches (Lofrans® Project 1,000 Low Profile)

Основная информация

Тип судна: Крейсер

Подкатегория: Express

Модельный год: 2006

Год постройки: 2006

Страна: Canada

Верх: Hardtop

Размеры

Длина общая: 45' 0" (13.72m)

Ширина: 14' 0" (4.27m)

Макс. осадка: 3' 5" (1.04m)

Длина привального бруса: 44' 0"
(13.41m)

Скорость, вместимость и масса

Крейс. скорость: 28 Kts. (32 MPH)

Макс. скорость: 32 Kts. (37 MPH)

Водоизмещение: 22500 Pounds

Вместимость воды: 100 Gallons

Вместимость сточного бака: 42 Gallons

Объем топливного бака: 335 Gallons

Размещение

Всего кают: 2

Всего коек: 5

Всего ком. состава: 2

Корпус и палуба

Материал корпуса: Fiberglass

Цвет корпуса: Blue

Информация о двигателе

Двигатели: 2

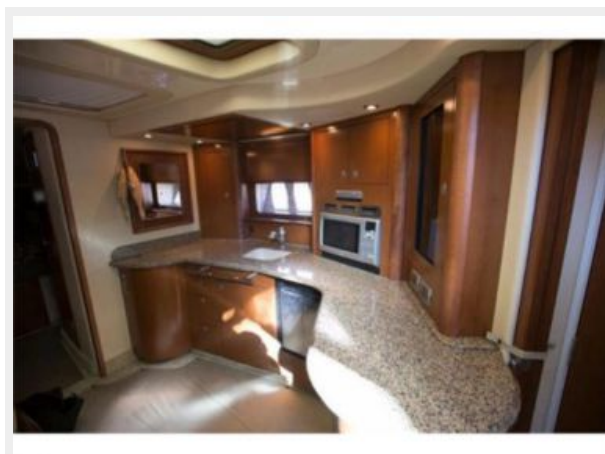
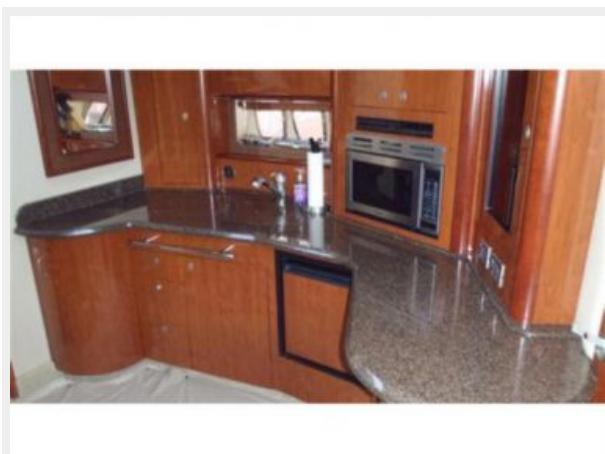
Производитель: Cummins

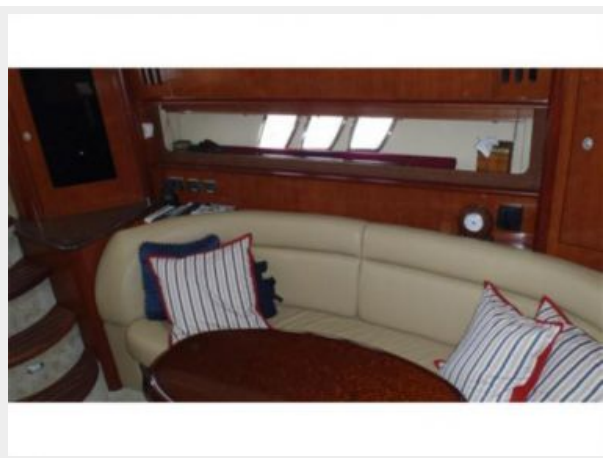
Модель: QSC 500

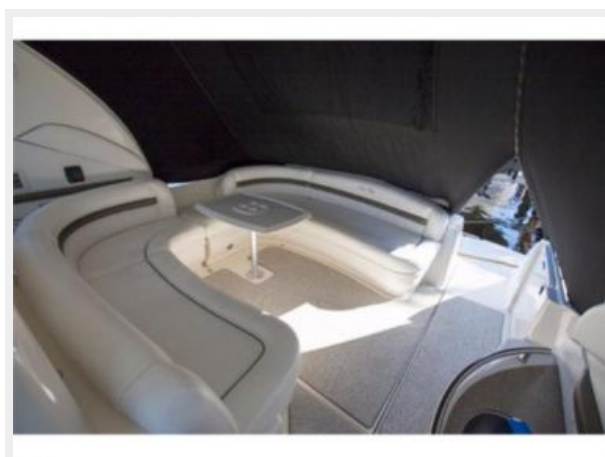
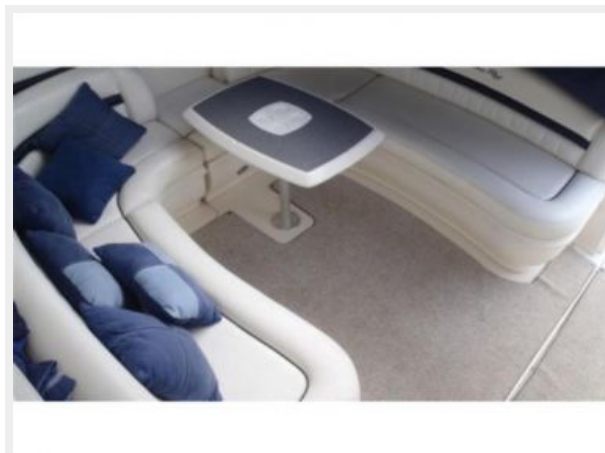
Тип двигателя: Inboard

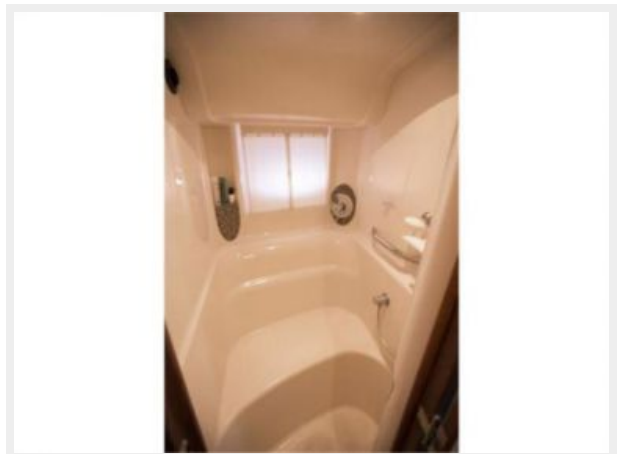
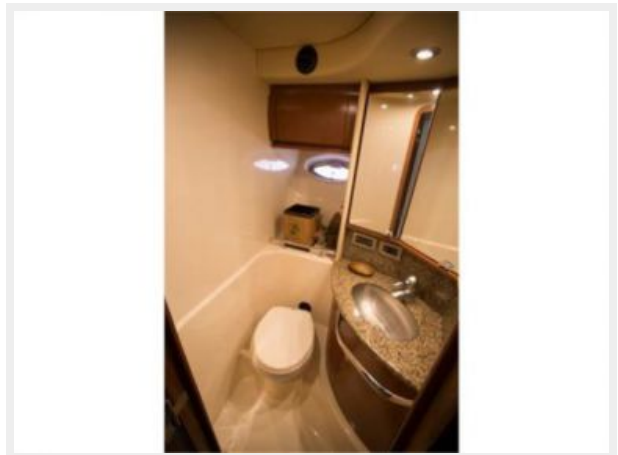
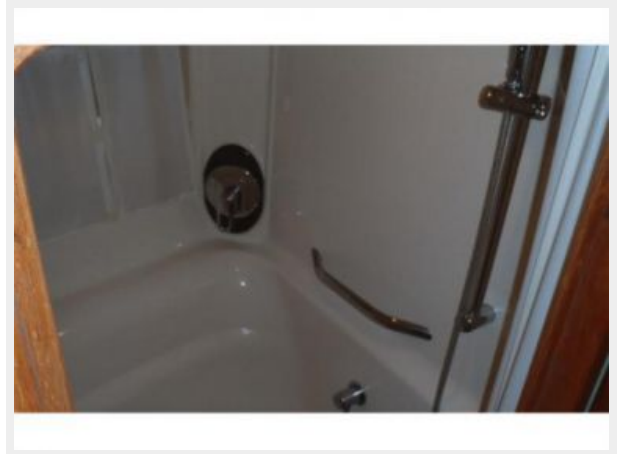
Тип топлива: Diesel

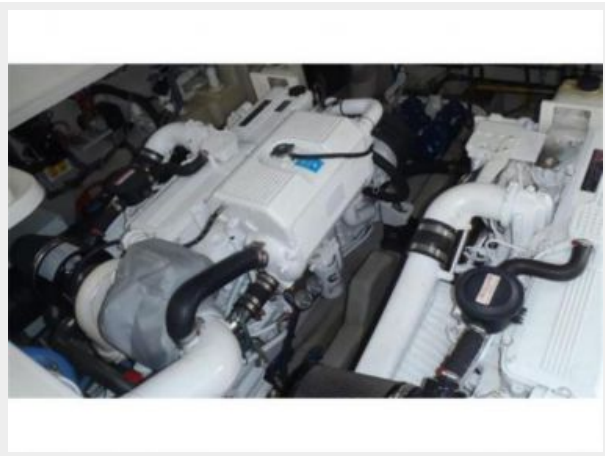
ФОТОГРАФИИ











КОНТАКТЫ

Андрей Шестаков (Andrey Shestakov) – ведущий яхтенный брокер отдела продаж яхт и судов компании Shestakov Yacht Sales Inc. Официальный представитель Shestakov Yacht Sales Inc. для русскоговорящих клиентов в центральном офисе компании в Майами/Форт Лодердейл/Флорида/США.

Контактная информация

Email: **andrey@shestakovyachtsales.com**

Web: shestakovyachtsales.com

Телефоны

Краснодарский край: **+7(918)465-66-44**

США, Майами, Флорида: **+1(954)274-4435**

Время работы

Понедельник – Суббота: **9:00 - 21:00**
EDT

Воскресенье: **Закрето**

Адрес



Harbour Towne Marina, 850 NE 3rd St,
STE 213, Dania, FL 33004