

ME — IAG



Builder: [IAG](#)

Year Built: 2014

Model: Motor Yacht

Price: PRICE ON APPLICATION

Location: United States

LOA: 127' 0" (38.71m)

Beam: 26' 3" (8.00m)

Max Draft: 7' 0" (2.13m)

Cruise Speed: 14 Kts. (16 MPH)

Max Speed: 17 Kts. (20 MPH)

Our experienced yacht broker, Andrey Shestakov, will help you choose and buy a yacht that best suits your needs **ME — IAG** from our catalogue. Presently, at Shestakov Yacht Sales Inc., we have a wide variety of yachts available on our sale's list. We also work in close contact with all the big yacht manufacturers from all over the world.

If you would like to buy a yacht **ME — IAG** or would like help answering any questions concerning purchasing, selling or chartering a yacht, please call **+1(954)274-4435**

TABLE OF CONTENTS

| | |
|----------------------------------|----|
| TABLE OF CONTENTS | 2 |
| SPECIFICATIONS | 3 |
| Overview | 3 |
| Basic Information | 3 |
| Dimensions | 3 |
| Speed, Capacities and Weight | 4 |
| Accommodations | 4 |
| Hull and Deck Information | 4 |
| Engine Information | 4 |
| DETAILED INFORMATION | 5 |
| Introduction | 5 |
| Navigational System Highlights | 5 |
| Mechanical Highlights | 6 |
| Appliances | 6 |
| Accessories | 7 |
| Ventilation and Air Conditioning | 7 |
| Comments | 7 |
| Exclusions | 7 |
| Disclaimer | 7 |
| PHOTOS | 8 |
| CONTACTS | 20 |
| Contact details | 20 |
| Telephones | 20 |
| Office hours | 20 |
| Address | 20 |

SPECIFICATIONS

Overview

\$200,000 Price Reduction. Best Priced Tri-deck Motor yacht on the market. Built to RINA Class-With accommodations for 12 guest in **six staterooms** the 127' IAG "ME" offers space and comfort only found on much larger yachts. The grandiose design provides a very open and inviting effect. In addition, the interior and exterior space flow seamlessly throughout. The salon and sky lounge each extend to an exterior covered deck that is accessed through automatic electric doors which makes each area great for entertaining. The fly-bridge with the her Jacuzzi and lounge area provides a great area to sun bathe and take in majestic view of surrounding ocean, The hand crafted Italian interior is a showcase of style and elegance. With a blend of minimalist features plus a play of natural wood veneers and stone accents, "ME" will continue to surprise and delight, both visually and to the touch.

Additional Photos and Video available upon request.

TRADES CONSIDERED.

Basic Information

Category: Motor Yacht

Sub Category: Tri-Deck

Model Year: 2014

Year Built: 2014

Country: United States

Fly Bridge: Yes

Dimensions

LOA: 127' 0" (38.71m)

LWL: 114' 7" (34.92m)

Beam: 26' 3" (8.00m)

Max Draft: 7' 0" (2.13m)

Speed, Capacities and Weight

Cruise Speed: 14 Kts. (16 MPH)

Cruise Speed Range: 1800

Max Speed: 17 Kts. (20 MPH)

Water Capacity: 1321 Gallons

Holding Tank: 264 Gallons

Fuel Capacity: 6075 Gallons

Accommodations

Total Cabins: 6

Total Heads: 8

Captain Cabin: True

Crew Cabin: 5

Crew Berths: 9

Crew Sleeps: 8

Crew Heads: 5

Hull and Deck Information

Hull Material: Fiberglass

Engine Information

Engines: 2

Manufacturer: Caterpillar

Model: C32 Acerts

Engine Type: Inboard

Fuel Type: Diesel

DETAILED INFORMATION

Introduction

The ***PrimaDonna Series*** is already seen as an ultra high quality Superyacht that has been designed, engineered and managed by very experienced and skilled Italian Naval Architects and artisans who are sharing their talents and secrets with the best Chinese craftsmen in Southern China, not by remote communication but by moving full-time to China to hands-on manage every aspect of the Shipyard operations. This 127 foot fiberglass composite motoryacht demonstrates great style while also offering a very high volume 3 deck design with a generous 26.5' beam. At 220 tons and with a semi displacement hull form, she offers 17 knot speed. The zero speed stabilization will keep all guests aboard in comfort even at anchor.

The builders of this series have been selected by the owners of the shipyard for their vast commercial and pleasure yacht experience in construction. The projects completed by them in Italy are literally a "who's who" of famous and widely acclaimed masterpieces.

The "*PrimaDonna 127*" series is aptly named as the first tri deck yacht line from this shipyard. Hull # 1 was launched in 2010 and debuted at the 2011 Miami Boat Show. She was sold in May of 2011 and was then exhibited at the 2011 Fort Lauderdale Boat Show as an example of the quality that IAG Yachts is capable of delivering. Over the past six years the yard has completed five yachts that range in size from 101'-140' and are in the process of completing a 133'. The 2014 127' IAG "ME" is currently available for sale in South Florida. With 6 staterooms for the owner and guests plus a crew accommodation for 8 with the captain on the bridge deck, the 127' series line will be a popular charter yacht design. Built to Rina Pleasure Class, these PrimaDonna series tri-deck motoryachts are a significant competitive offering from this shipyard.

While her exterior is fared and painted to perfection, her beauty is not only skin deep. The hand crafted Italian interior is a showcase of style and elegance. With a blend of minimalist features plus a play of natural wood veneers and stone accents, the "**ME**" will continue to surprise and delight, both visually and to the touch.

Achieving physical beauty inside and out is never enough in a highly competitive world market. She must also have the myriad of operational systems enough to match a small city and each system must be accepted by her Class and Registry to comply with flawless operations, safety and sanitary standards.

These points have all been achieved, which simply put, makes "ME" the best new yacht value in the world.

Navigational System Highlights

- Furuno X-band radar, FAR 2117, ARPA system w/ 6.5' open array antenna - 96 NM range

& video plotter function

- Chart plotter system-VEI Marci Pro
- GPS/AIS systems - GPS and transponder giving vessel date, position, heading, speed
- Sailor RT 5022 DSC Class A VHF
- Sailor RT 4001 w/ DSC class D VHF
- (2) portable Sailor SP 3520 GMDSS VHF
- Furuno N700 Navtex receiver
- Sailor 9 Ghz search & rescue transponder
- EPIRB
- SATCOM C
- FLEET - Sailor 500 broadband w/ 600 mm diameter antenna
- Sperry Marine Navipilot 4000 autopilot
- Monitoring & alarm system (Servowatch)
- TVCC system

Mechanical Highlights

- Twin Caterpillar C32 Acert
- 1000 Hr Engine service completed Fall 2018
- ZF 3050 Gear reduction with 3:1 gear ratio
- Non-retractable stabilizer fin system - designed to absorb 90% of rolling at speed of 16 kts.
- 65 kw Bow Thruster
- ENAFROID complete airconditioning system - 400 BTU capacity
- Twin Caterpillar 80kw diesel generators
- 480V three phase 50 Hz shore connection
- Frequency converter SAE electronic ASP 75 KVA
- Fuel Oil system-Self priming electro pump Gianneschi CP40
- Compressed air system
- Underwater Exhaust

Appliances

- Miele heavy duty washer - crew area
- Miele heavy duty dryer - crew area
- Stainless steel walk in freezer - crew area
- Stainless steel hood - galley
- Miele hot plates
- Miele grill
- Miele oven
- Miele microwave oven
- Miele dishwasher
- Stainless steel fridge/freezers Liebherr

- Gaggia coffee machine
- (3) SIMAG icemakers
- Liebherr wine cooler

Accessories

- Two Maxwell anchor Windlasses
- Anchor pockets
- Chain stopper and bow maneuvering island
- 2 x 125 M length galvanized 16 mm chain
- **Tender lifting devices**-OPAC Mare crane located on Flyybridge
- Cradle for two Wave runners on Flybridge
- Cradle for tender on Flybridge
- Dumbwaiter 50kg
- OPAC Mare Gangway
- Side ladder
- Swimming Ladder
- 4 self inflatable life rafts to accommodate 10 people each

Ventilation and Air Conditioning

- Enafrid Air conditioning system 400,000 BTU
- Engine room equipped with two exhaust fans
- AC serviced fall 2018

Comments

DETAILED FUEL CONSUMPTION AVAILABLE UPON REQUEST. TRADES CONSIDERED.

Exclusions

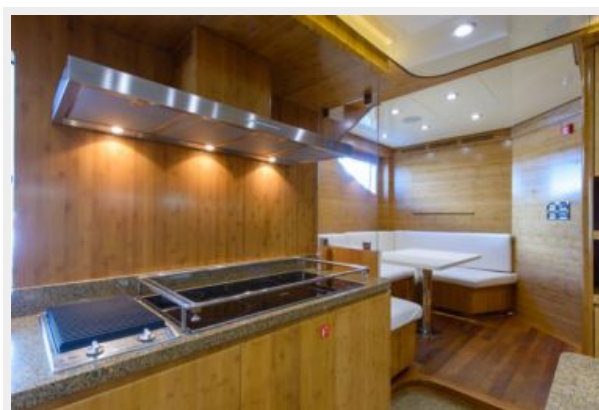
Owner's personal belongings.

Disclaimer

The Company offers the details of this vessel or yacht in good faith but cannot guarantee or warrant the accuracy of this information nor warrant the condition of the vessel. A buyer should instruct his representatives, agents, or his surveyors, to investigate such details as the buyer desires validated. This vessel or yacht is offered subject to prior sale, price change, or withdrawal without notice.

PHOTOS

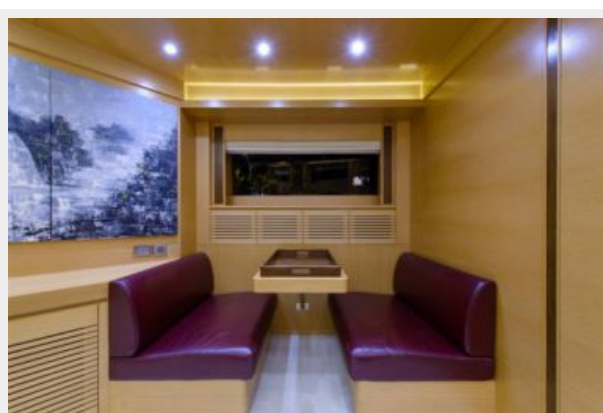








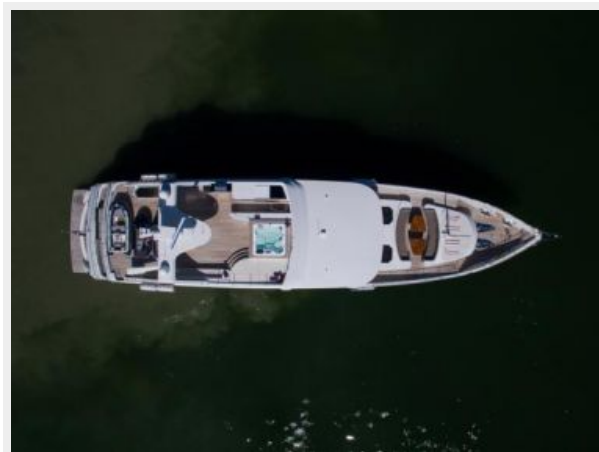
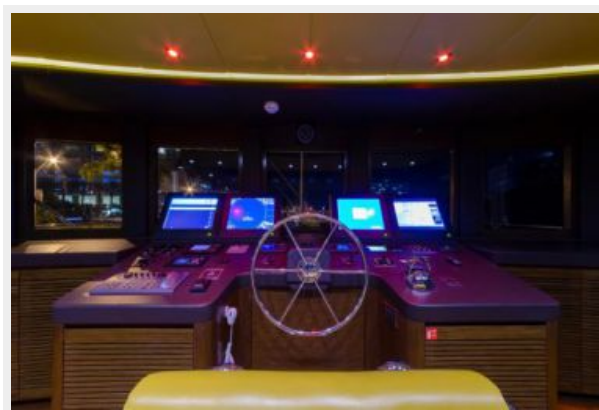


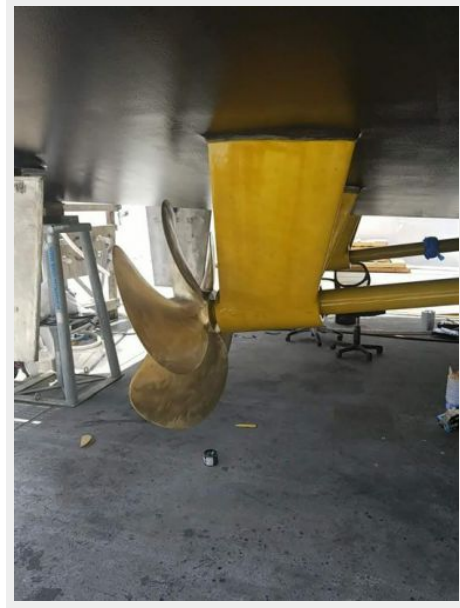














CONTACTS

Andrey Shestakov, leading yacht broker of the sales department of Shestakov Yacht Sales Inc. Shestakov Yacht Sales Inc., the official representative of the Miami/Fort Lauderdale FL headquarters.

Contact details

Email: **andrey@shestakovyachtsales.com**

Web: shestakovyachtsales.com/en/

Telephones

USA: **+1(954)274-4435**

Office hours

Monday – Saturday: **9:00 - 21:00 EDT**

Sunday: **closed**

Address



Harbour Towne Marina, 850 NE 3rd St,
STE 213, Dania, FL 33004