

OSPREY — ISLAND PACKET YACHTS



Builder: ISLAND PACKET YACHTS

Year Built: 1984

Model: Cruising Sailboat

Price: PRICE ON APPLICATION

Location: United States

LOA: 31' 0" (9.45m)

Beam: 11' 6" (3.51m)

Min Draft: 3' 0" (0.91m)

Our experienced yacht broker, Andrey Shestakov, will help you choose and buy a yacht that best suits your needs **Osprey — ISLAND PACKET YACHTS** from our catalogue. Presently, at Shestakov Yacht Sales Inc., we have a wide variety of yachts available on our sale's list. We also work in close contact with all the big yacht manufacturers from all over the world.

If you would like to buy a yacht **Osprey — ISLAND PACKET YACHTS** or would like help answering any questions concerning purchasing, selling or chartering a yacht, please call **+1(954)274-4435**

TABLE OF CONTENTS

TABLE OF CONTENTS	2
SPECIFICATIONS	3
Overview	3
Basic Information	3
Dimensions	3
Speed, Capacities and Weight	3
Accommodations	3
Hull and Deck Information	4
Engine Information	4
DETAILED INFORMATION	5
Features	5
Exclusions	6
Disclaimer	6
PHOTOS	7
CONTACTS	13
Contact details	13
Telephones	13
Office hours	13
Address	13

SPECIFICATIONS

Overview

This is a sail away vessel - extremely well maintained, bring your personal belongings and go. Rare centerboard model with only a 3 FT draft - Perfect for Florida & Caribbean cruising! In an article published by Cruising World Magazine, after surveying hundreds of sailboats, the Island Packet 31 was one of only 10 Sailboats Under \$50K identified as affordable capable cruisers...April 4, 2018 Upgrades and updates include: full cockpit enclosure and cushions (2016), newer sails including main and genoa (2013), new bottom paint (2017) , and standing rigging (2010). She also has a modified cutter rig with stay sail included.

Basic Information

Category: Cruising Sailboat

Model Year: 1984

Year Built: 1984

Country: United States

Dimensions

LOA: 31' 0" (9.45m)

LWL: 27' 9" (8.46m)

LOD: 30' 7" (9.32m)

Beam: 11' 6" (3.51m)

Min Draft: 3' 0" (0.91m)

Clearance: 43' 6" (13.26m)

Speed, Capacities and Weight

Displacement: 11000 Pounds

Water Capacity: 70 Gallons

Holding Tank: 14 Gallons

Fuel Capacity: 25 Gallons

Accommodations

Total Cabins: 3

Total Berths: 4

Total Heads: 1

Hull and Deck Information

Hull Material: Fiberglass

Hull Configuration: Centerboard

Engine Information

Engines: 1

Manufacturer: Yanmar

Model: 3GMF

Engine Type: Inboard

Fuel Type: Diesel

DETAILED INFORMATION

Features

Island Packet 32 ...Review excerpt by Blue Water Boats.org Jan 17, 2016 Island Packet 31
Author: Rosiemac Overview The Island Packet 31, designed by Bob Johnson, founder of Island Packet Yachts, was the riskiest and the most successful of the Island Packet lineage. Styled as a traditional cruiser but with more than a hint of broad hulled 'catboat' in her appearance, around 262 were produced between 1983 and 1989. She has the simplicity, roomy interior and shallow draft of the catboats, used for transport and fishing around the waters of the New England coast, as well as the wide 'codhead' hull. The Island Packet 31 doesn't come cheap for a 31 footer. Her huge interior and solid construction are a big part of her allure, notwithstanding the good name that the Island Packet Yachts brand has built. Not everyone is a fan of her unusual design but she's considered to be a comfortable classic liveaboard yacht, particularly in shoal waters.

History In 1979 in Largo, Florida, naval architect Bob Johnson, having designed boats for a number of years for other outfits such as Irwin and Endeavour, decided to set up on his own and began building small boats under the company name Traditional Watercraft Inc. In 1980, modifying old molds from an out-of-business Bombay Yachts, he created the Island Packet 26. The boat was marketed as the Mark I, Mark II and eventually the Island Packet 27 and was quite a success. In 1983 Bob took a leap of faith and put the company on the line essentially, in a time when many yacht builders were struggling to stay in business by designing the Island Packet 31 from scratch. His leap ended gracefully in 14 orders for the IP31 at the U.S. Sailboat show in Annapolis and saw the beginning of a seven-year production run which only ended in 1989 with the advent of the Island Packet 32. The excellent resale value of the Island Packet 31 on the used boat market reflects not only the popularity of the boat but also that of Island Packet Yachts. Over the years Island Packet have earned their place amongst the top producers of cruising yachts, not only for their proven designs but for the apparently outstanding level of customer service and support which they provide. It appears that no man with an Island Packet yacht is an island. Configuration and Layout Most Island Packet 31's come with a double-headed sloop rig, but 10% have the plain sloop rig that apparently works well with a 150% genoa. The quirky looks are bestowed by an almost perpendicular stern, short overhangs, sweeping sheer and a stubby bowsprit as well as the broad beam she carries almost throughout, with her maximum 11' 6" beam forward of amidships. On deck the flat expanse of cabin roof, full-length hand rails and wide side decks make working safe and easy. Inside, she's light and airy and has the accommodation of a much bigger boat. There are some clever features such as the folding door/fold down chart table combo which can be used to close off the double quarter berth aft. Plenty of headroom above, a generous sized head, several hanging lockers and a full-size wrap around galley fill out the plentiful available space. Design and Construction Island Packet market traditional designs married with modern construction techniques and although not a heavy boat, time has proven the IP31 solidly built. Island Packet use their own unique product, Polycore, for coring the deck and it appears to have stood the test of time with no reports of delamination. Although liners are used for the interior opinion has it that they are sensibly installed, leaving access to the bilges and other critical areas. Below the water, she carries Bob

Johnson's full foiled keel, a hallmark of Island Packets. It's essentially a fin keel but stretched lengthways fore and aft into a long keel in a nod to enhancing performance while preserving a shallow draft. As a result draft is only 4' and around 10% of 31's were built with centerboards, reducing the draft to 3' feet. The keel is not fastened to the hull but an integral part of it and according to Bob Johnson is something that's at the heart of an Island Packet. Accommodations Starting forward there is a large V-berth - aft to starboard is a head with vanity, hatch and opening port. Aft to port is a large hanging locker. The large salon is next with an L shaped settee to starboard and a straight settee to port - the galley is to port aft of this settee. On the starboard side aft of that settee is the Nav station and a large quarter berth with privacy panel and door. Galley The galley has a double stainless steel sink with pressure water, a Hillerange with two burner cook top and oven. There is a large Ice box and plenty of dry storage. Additional Information All winches are Lewmar - the primary's are #40, two speed and self-tailing. Secondary winches are Lewmar #8, single speed.

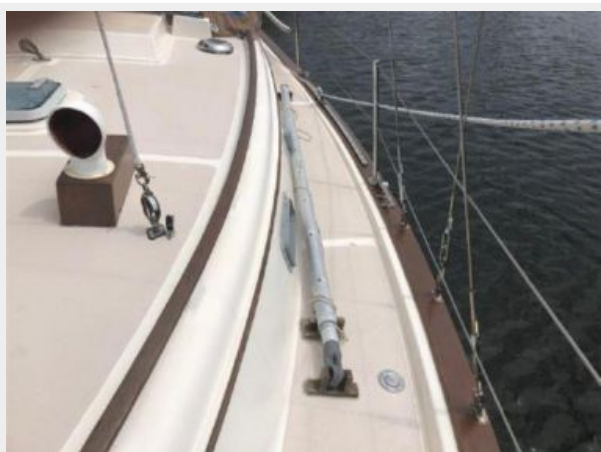
Exclusions

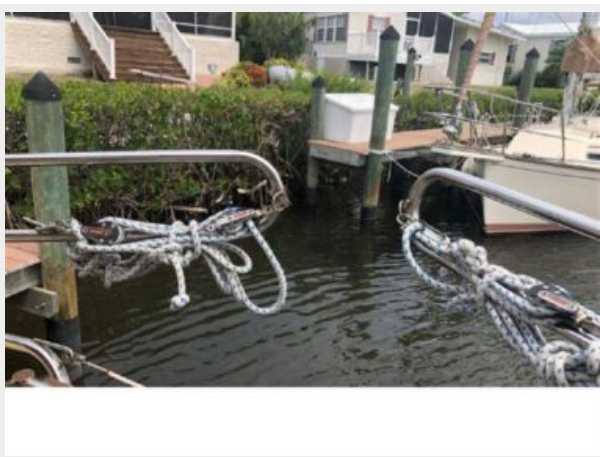
Owner's personal belongings.

Disclaimer

The Company offers the details of this vessel or yacht in good faith but cannot guarantee or warrant the accuracy of this information nor warrant the condition of the vessel. A buyer should instruct his representatives, agents, or his surveyors, to investigate such details as the buyer desires validated. This vessel or yacht is offered subject to prior sale, price change, or withdrawal without notice.

PHOTOS

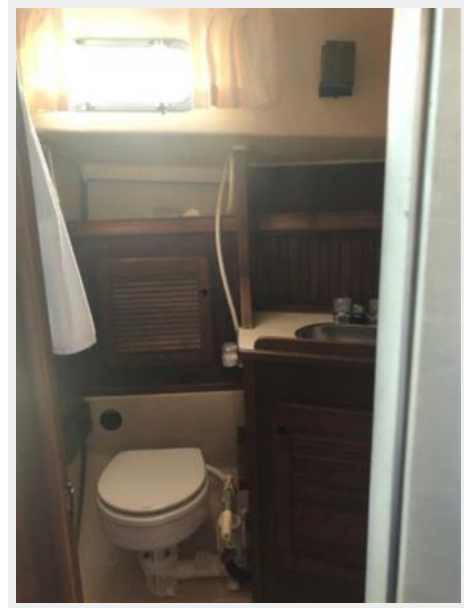












CONTACTS

Andrey Shestakov, leading yacht broker of the sales department of Shestakov Yacht Sales Inc. Shestakov Yacht Sales Inc., the official representative of the Miami/Fort Lauderdale FL headquarters.

Contact details

Email: andrey@shestakovyachtsales.com

Web: shestakovyachtsales.com/en/

Telephones

USA: +1(954)274-4435

Office hours

Monday – Saturday: **9:00 - 21:00** EDT

Sunday: **closed**

Address



Harbour Towne Marina, 850 NE 3rd St,
STE 213, Dania, FL 33004