

## OSPREY — ISLAND PACKET YACHTS



**Судостроитель:**

ISLAND PACKET YACHTS

**Год постройки:** 1984

**Модель:** Крейсерская яхта

**Цена:** ЦЕНА ЯХТЫ ПО ЗАПРОСУ

**Местонахождение:** United States

**Длина общая:** 31' 0" (9.45m)

**Ширина:** 11' 6" (3.51m)

**Мин. осадка:** 3' 0" (0.91m)

Купить Osprey — ISLAND PACKET YACHTS а также выбрать подходящую вам яхту из нашего каталога яхт вам поможет опытный яхтенный брокер Андрей Шестаков. На сегодняшний день компания Shestakov Yacht Sales Inc. имеет большое количество яхт в собственном списке продаж, а также тесно сотрудничает со всеми крупными яхтенными производителями по всему миру.

Для того чтобы купить яхту Osprey — ISLAND PACKET YACHTS а также проконсультироваться по любому вопросу связанному с покупкой, продажей, чартером яхт позвоните по телефону **+7(918)465-66-44**.

# ОГЛАВЛЕНИЕ

---

ОГЛАВЛЕНИЕ	2
ХАРАКТЕРИСТИКИ	3
Обзор	3
Основная информация	3
Размеры	3
Скорость, вместимость и масса	3
Размещение	3
Корпус и палуба	4
Информация о двигателе	4
ПОДРОБНОЕ ОПИСАНИЕ	5
Features	5
Исключения	6
Отказ от ответственности	6
ФОТОГРАФИИ	7
КОНТАКТЫ	13
Контактная информация	13
Телефоны	13
Время работы	13
Адрес	13

# ХАРАКТЕРИСТИКИ

## Обзор

This is a sail away vessel - extremely well maintained, bring your personal belongings and go. Rare centerboard model with only a 3 FT draft - Perfect for Florida & Caribbean cruising! In an article published by Cruising World Magazine, after surveying hundreds of sailboats, the Island Packet 31 was one of only 10 Sailboats Under \$50K identified as affordable capable cruisers...April 4, 2018 Upgrades and updates include: full cockpit enclosure and cushions (2016), newer sails including main and genoa (2013), new bottom paint (2017) , and standing rigging (2010). She also has a modified cutter rig with stay sail included.

## Основная информация

**Тип судна:** Крейсерская яхта

**Модельный год:** 1984

**Год постройки:** 1984

**Страна:** United States

## Размеры

**Длина общая:** 31' 0" (9.45m)

**Длина по ватерлинии:** 27' 9" (8.46m)

**Длина палубы:** 30' 7" (9.32m)

**Ширина:** 11' 6" (3.51m)

**Мин. осадка:** 3' 0" (0.91m)

**Трапы:** 43' 6" (13.26m)

## Скорость, вместимость и масса

**Водоизмещение:** 11000 Pounds

**Вместимость воды:** 70 Gallons

**Вместимость сточного бака:** 14 Gallons

**Объем топливного бака:** 25 Gallons

## Размещение

**Всего кают:** 3

**Всего коек:** 4

**Всего ком. состава:** 1

---

## Корпус и палуба

---

**Материал корпуса:** Fiberglass

**Комплектация корпуса:** Centerboard

---

## Информация о двигателе

---

**Двигатели:** 1

**Производитель:** Yanmar

**Модель:** 3GMF

**Тип двигателя:** Inboard

**Тип топлива:** Diesel

# ПОДРОБНОЕ ОПИСАНИЕ

## Features

Island Packet 32 ...Review excerpt by Blue Water Boats.org Jan 17, 2016 Island Packet 31  
Author: Rosiemac Overview The Island Packet 31, designed by Bob Johnson, founder of Island Packet Yachts, was the riskiest and the most successful of the Island Packet lineage. Styled as a traditional cruiser but with more than a hint of broad hulled 'catboat' in her appearance, around 262 were produced between 1983 and 1989. She has the simplicity, roomy interior and shallow draft of the catboats, used for transport and fishing around the waters of the New England coast, as well as the wide 'codhead' hull. The Island Packet 31 doesn't come cheap for a 31 footer. Her huge interior and solid construction are a big part of her allure, notwithstanding the good name that the Island Packet Yachts brand has built. Not everyone is a fan of her unusual design but she's considered to be a comfortable classic liveaboard yacht, particularly in shoal waters.

History In 1979 in Largo, Florida, naval architect Bob Johnson, having designed boats for a number of years for other outfits such as Irwin and Endeavour, decided to set up on his own and began building small boats under the company name Traditional Watercraft Inc. In 1980, modifying old molds from an out-of-business Bombay Yachts, he created the Island Packet 26. The boat was marketed as the Mark I, Mark II and eventually the Island Packet 27 and was quite a success. In 1983 Bob took a leap of faith and put the company on the line essentially, in a time when many yacht builders were struggling to stay in business by designing the Island Packet 31 from scratch. His leap ended gracefully in 14 orders for the IP31 at the U.S. Sailboat show in Annapolis and saw the beginning of a seven-year production run which only ended in 1989 with the advent of the Island Packet 32. The excellent resale value of the Island Packet 31 on the used boat market reflects not only the popularity of the boat but also that of Island Packet Yachts. Over the years Island Packet have earned their place amongst the top producers of cruising yachts, not only for their proven designs but for the apparently outstanding level of customer service and support which they provide. It appears that no man with an Island Packet yacht is an island. Configuration and Layout Most Island Packet 31's come with a double-headed sloop rig, but 10% have the plain sloop rig that apparently works well with a 150% genoa. The quirky looks are bestowed by an almost perpendicular stern, short overhangs, sweeping sheer and a stubby bowsprit as well as the broad beam she carries almost throughout, with her maximum 11' 6" beam forward of amidships. On deck the flat expanse of cabin roof, full-length hand rails and wide side decks make working safe and easy. Inside, she's light and airy and has the accommodation of a much bigger boat. There are some clever features such as the folding door/fold down chart table combo which can be used to close off the double quarter berth aft. Plenty of headroom above, a generous sized head, several hanging lockers and a full-size wrap around galley fill out the plentiful available space. Design and Construction Island Packet market traditional designs married with modern construction techniques and although not a heavy boat, time has proven the IP31 solidly built. Island Packet use their own unique product, Polycore, for coring the deck and it appears to have stood the test of time with no reports of delamination. Although liners are used for the interior opinion has it that they are sensibly installed, leaving access to the bilges and other critical areas. Below the water, she carries Bob

Johnson's full foiled keel, a hallmark of Island Packets. It's essentially a fin keel but stretched lengthways fore and aft into a long keel in a nod to enhancing performance while preserving a shallow draft. As a result draft is only 4' and around 10% of 31's were built with centerboards, reducing the draft to 3' feet. The keel is not fastened to the hull but an integral part of it and according to Bob Johnson is something that's at the heart of an Island Packet. Accommodations Starting forward there is a large V-berth - aft to starboard is a head with vanity, hatch and opening port. Aft to port is a large hanging locker. The large salon is next with an L shaped settee to starboard and a straight settee to port - the galley is to port aft of this settee. On the starboard side aft of that settee is the Nav station and a large quarter berth with privacy panel and door. Galley The galley has a double stainless steel sink with pressure water, a Hillerange with two burner cook top and oven. There is a large Ice box and plenty of dry storage. Additional Information All winches are Lewmar - the primary's are #40, two speed and self-tailing. Secondary winches are Lewmar #8, single speed.

---

## Исключения

---

При продаже яхты исключаются личные вещи владельца.

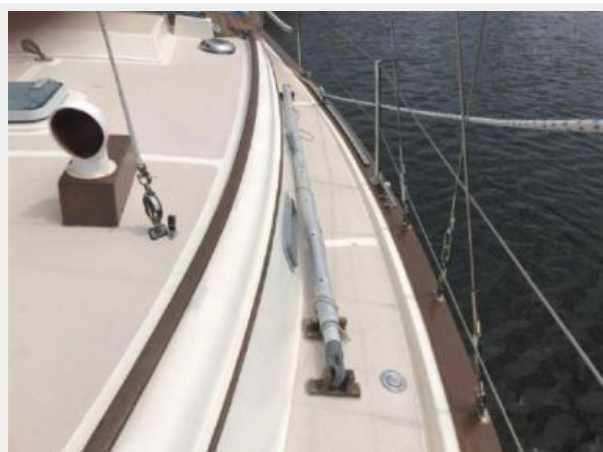
---

## Отказ от ответственности

---

Компания предоставляет описание судна или яхты добросовестно, но не может гарантировать точность этой информации, а также не ручается за техническое состояние. Покупатель должен проинструктировать своих агентов или оценщиков исследовать представленную информацию более подробно, по собственному желанию. Продажа судна или яхты, изменение цены или снятие с продажи будет происходить без предварительного уведомления.

# ФОТОГРАФИИ















# КОНТАКТЫ

---

Андрей Шестаков (Andrey Shestakov) – ведущий яхтенный брокер отдела продаж яхт и судов компании Shestakov Yacht Sales Inc. Официальный представитель Shestakov Yacht Sales Inc. для русскоговорящих клиентов в центральном офисе компании в Майами/Форт Лодердейл/Флорида/США.

## Контактная информация

---

Email: [andrey@shestakovyachtsales.com](mailto:andrey@shestakovyachtsales.com)

Web: [shestakovyachtsales.com](http://shestakovyachtsales.com)

## Телефоны

---

Краснодарский край: **+7(918)465-66-44**

США, Майами, Флорида: **+1(954)274-4435**

## Время работы

---

Понедельник – Суббота: **9:00 - 21:00**  
EDT

Воскресенье: **Закрито**

## Адрес

---



Harbour Towne Marina, 850 NE 3rd St,  
STE 213, Dania, FL 33004