

DON'T TELL MAMMA — AZIMUT



Builder: AZIMUT

Year Built: 2010

Model: Motor Yacht

Price: PRICE ON APPLICATION

Location: United States

LOA: 60' 0" (18.29m)

Beam: 16' 3" (4.95m)

Max Draft: 4' 7" (1.40m)

Cruise Speed: 26 Kts. (30 MPH)

Max Speed: 32 Kts. (37 MPH)

Our experienced yacht broker, Andrey Shestakov, will help you choose and buy a yacht that best suits your needs **Don't Tell Mamma — AZIMUT** from our catalogue. Presently, at Shestakov Yacht Sales Inc., we have a wide variety of yachts available on our sale's list. We also work in close contact with all the big yacht manufacturers from all over the world.

If you would like to buy a yacht **Don't Tell Mamma — AZIMUT** or would like help answering any questions concerning purchasing, selling or chartering a yacht, please call **+1(954)274-4435**

TABLE OF CONTENTS

TABLE OF CONTENTS	2
SPECIFICATIONS	4
Overview	4
Basic Information	4
Dimensions	4
Speed, Capacities and Weight	5
Accommodations	5
Hull and Deck Information	5
Engine Information	5
DETAILED INFORMATION	6
Overview	6
Accommodations	6
Salon	7
Master Stateroom	8
VIP Stateroom 1	9
Guest Stateroom 1	9
Master Head	9
Guest Head	9
Electronics	10
Bow & Stern	10
Engineer Room	11
Electrical Equipment	11
Exclusions	11
Disclaimer	11
PHOTOS	12
CONTACTS	22
Contact details	22
Telephones	22

Office hours	22
Address	22

SPECIFICATIONS

Overview

Perhaps Momma shouldn't be told, but everyone else should be aware that the 2010 60' Azimut DON'T TELL MOMMA is on the market and ready-to-be-sold. She has the type of extremely sophisticated yet supremely comfortable European-style interior for which Azimuts are famed. One recurring theme on the yacht is music & entertainment. There are only a handful of vessels in her class with as many high-end speakers on board as DON'T TELL MOMMA - even on the bow, where they are perfectly positioned to provide musical accompaniment while sunpad lounging. Powered by recently-serviced MAN R6s with low engine hours, this three-stateroom yacht is in good condition and runs well. This is no surprise, as she has been well-looked after and has had recent, significant work performed on her - including a complete wax job, teak refurbishment, new Raymarine monitors, bilge cleaning, Bimini Top cleaning, and VHF radio replacement. One of her A/C compressors was just replaced, and the other is less than a year old, so the entire vessel can be brought down to downright chilly conditions (if one were so inclined). Unlike some of her direct comps, DON'T TELL MOMMA also boasts a crew berth with a head, which is accessible off the transom. This doesn't make her any less of an ideal owner-operator yacht, but it certainly opens up the options. For anyone looking for a great Bahamas boat in the 55' to 70' range or a turn-key charter yacht - one that is capable of both day & term charters - look no further than DON'T TELL MOMMA.

Basic Information

Category: Motor Yacht

Sub Category: Flybridge

Model Year: 2010

Year Built: 2010

Country: United States

Dimensions

LOA: 60' 0" (18.29m)

Beam: 16' 3" (4.95m)

Max Draft: 4' 7" (1.40m)

Speed, Capacities and Weight

Cruise Speed: 26 Kts. (30 MPH)

Max Speed: 32 Kts. (37 MPH)

Water Capacity: 160 Gallons

Holding Tank: 87 Gallons

Fuel Capacity: 740 Gallons

Accommodations

Total Cabins: 3

Sleeps: 6

Total Heads: 3

Crew Berths: 1

Crew Sleeps: 1

Crew Heads: 1

Hull and Deck Information

Hull Material: Fiberglass

Hull Configuration: Semi-Displacement

Hull Color: Blue

Engine Information

Engines: 2

Manufacturer: MAN

Model: R6

Fuel Type: Diesel/Electric

DETAILED INFORMATION

Overview

Perhaps Momma shouldn't be told, but everyone else should be aware that the 2010 60' Azimut DON'T TELL MAMMA is on the market and ready-to-be-sold. She has the type of extremely sophisticated yet supremely comfortable European-style interior for which Azimuts are famed. One recurring theme on the yacht is music & entertainment. There are only a handful of vessels in her class with as many high-end speakers on board as DON'T TELL MAMMA - even on the bow, where they are perfectly positioned to provide musical accompaniment while sunpad lounging. Powered by recently-serviced MAN R6s with low engine hours, this three-stateroom yacht is in good condition and runs well. This is no surprise, as she has been well-looked after and has had recent, significant work performed on her - including a complete wax job, teak refurbishment, new Raymarine monitors, bilge cleaning, Bimini Top cleaning, and VHF radio replacement. One of her A/C compressors was just replaced, and the other is less than a year old, so the entire vessel can be brought down to downright chilly conditions (if one were so inclined). Unlike some of her direct comps, DON'T TELL MAMMA also boasts a crew berth with a head, which is accessible off the transom. This doesn't make her any less of an ideal owner-operator yacht, but it certainly opens up the options. For anyone looking for a great Bahamas boat in the 55' to 70' range or a turn-key charter yacht - one that is capable of both day & term charters - look no further than DON'T TELL MAMMA.

Accommodations

Upon entering the main salon, one immediately notices a sprawling, eight-person sofa to port. This area is ideally situated directly across from the yacht's entertainment center, including a flat-screen Samsung television. High-end B&W speakers, mounted around the salon, promise to provide all-encompassing surround sound to the movies and sports games of one's choosing. Moving forward through DON'T TELL MAMMA, there is a galley to port and a dinette to starboard. The dinette is comprised of a Decapé oak table with a fixed center panel and extending top - the perfect nook in which to enjoy breakfast or lunch, or perhaps to confer with the captain about the day's cruising plans. The galley, located opposite the dinette, is fully equipped with all of the equipment - like a stove top and Philco microwave - necessary to prepare a gourmet meal. There's a standalone freezer and refrigerator. There's also more than enough storage for china, glassware, plates, and cutlery. No one will be lacking for a space, even on an extended trip - such is the design prowess of Azimut. The lower helm station is conveniently-located just forward of both the dinette and galley. This helm station was designed to provide maximum visibility to the captain, and that it does. The Raymarine electronics and other instrumentation are well laid-out. Going below deck, one is treated to a major highlight of DON'T TELL MAMMA - her ultra-comfortable and compellingly-designed guest quarters. But first, before any staterooms are inspected, one is treated to a suede-lined hallway. Midship you will find independent access to the full-beam Master stateroom, allowing for maximum privacy. The Master is notable for a number of reasons, beyond just a well-appointed decor and rich, light-colored oak - there's a ton

of natural light, Azimut's iconic port windows, and a large desk, which gives a section of this stateroom something of a refined home office feeling. Moving out of the master, there are three steps leading up to a day head to port and a forward VIP. The day head can be accessed through a door in the VIP, rendering this luxury stateroom ensuite. The VIP has ample storage, a comfy double bed, and a flat screen LG television. Across from the day/VIP head, is the third guest cabin on DON'T TELL MAMMA. This cabin features a large closet, double bed and a flat-screen LG television. Given that there are all full-size beds on this Azimut, the set-up is perfect for three couples.

Salon

LOWER SEATING AREA

- 8-seat sofa on the port side
- Radio/CD player with remote control and two speakers

DINETTE

- Relaxation area for 5-6 persons
- Decapé oak table with fixed center panel and extending top.

HELM STATION

- Adjustable single pilot seat Desk for computer,
- Courtesy and night-time navigation lights (red)
- Power steering Height-adjustable steering wheel
- Winch control rev counter hour meter engine oil pressure gauge ?
- Marine gear oil pressure gauge
- Engine water thermometers ammeters engine alarm LED series alarm for water in the fuel shore-on LED
- Fresh water tank level gauge
- Fuel level gauge
- Rudder angle indicator
- Trim tabs control with indicators
- Washer-wiper controls
- Switches for: side windows that can be electrically opened, navigation lights, bilge pumps, chain washdown, battery parallel connection, instrument lights, horn, generator Switches for fans in the engine room (automatic and manual functioning with engines off)
- Electronic interfaced navigation instruments
- Control panel (control and selection of the power sources with bright indications and analogue instruments, bilge water alarm LEDs and high tank level)
- 12V cigarette lighter-type power socket
- CRUISE COMMAND electronic remote controls Engine start/off keys with button for engine Syncro operation
- Engine panel complete with optical and acoustic alarms

- Water and fuel level gauges
- Alternator ammeters.

GALLEY

- 3 burner ceramic-glass hob with fiddle rail
- Microwave oven
- Worktop in granulon with two stainless steel sinks
- Extractor hood 130
- I fridge with 220 V automatic power supplier + 56 l freezer
- Cabinets and drawer in decap  oak under worktop
- Walkway in decap  oak
- Cabinet for china, glasses and cutlery storage with crystal glass shelf
- Store room and service compartments adjacent to the cabin staircase.

Master Stateroom

- Queen-size bed with locker accessible from top
 - Leather bed rim, oak and leather headboard
 - Wardrobe with interior and inside shelves in natural cedar wood
 - Large wardrobe on port side with natural cedar wood interiors and full-length mirror
 - Built-in drawer unit starboard side
 - Vanity unit with drawers
 - Carpet Double curtains for windows
 - Emergency exit via ceiling above the vanity unit
 - Doors and frames in decap  oak
 - Direct access to the master head compartment
 - Azimut reading lights
 - TV installation
 - Wide windows in the hull that can be partially opened
-
- Queen-size bed with locker accessible from top
 - Leather bed rim, oak and leather headboard
 - Wardrobe with interior and inside shelves in natural cedar wood
 - Large wardrobe on port side with natural cedar wood interiors and full-length mirror
 - Built-in drawer unit starboard side
 - Vanity unit with drawers
 - Carpet Double curtains for windows
 - Emergency exit via ceiling above the vanity unit
 - Doors and frames in decap  oak
 - Direct access to the master head compartment
 - Azimut reading lights
 - TV installation
 - Wide windows in the hull that can be partially opened

VIP Stateroom 1

- Leather bed rim Decapé oak and leather headboard
- Shelves above the windows
- One wardrobe on each side, with dress hangers and shelves.
- Wardrobe interiors in natural cedar wood Panoramic windows
- Deck hatch with shade and mosquito net
- Azimut reading lights
- Decapé oak doors and frames
- Direct access to head compartment.

Guest Stateroom 1

- Twin beds Central nightstand and switches
- Built-in wardrobe with shelves and internal mirror (interior in natural cedar wood)
- Carpet Round porthole
- Azimut reading lights
- Shelf above the porthole in decapé oak
- Doors and frames in decapé oak.

Master Head

- Access from master cabin
- Separate shower with bench
- Shower column with soap tray and mixer taps
- Decapé oak wooden floor
- Air extractor
- TECMA WC V
- enetian blinds in wood
- Round porthole
- Storage cabinet behind the WC
- Storage behind the shower
- Shelf above sink with mirror.

Guest Head

- Access from VIP cabin and from corridor
- Round Plexiglas shower with wooden grating
- Shower column with soap tray and mixer tap
- Round porthole
- Decapé oak wooden floor

- Tecma WC
- Venetian blinds in wood
- Shelf above sink with mirror.
- Cabin access corridor/stairway Cabinet with shelves.

Electronics

- Raymarine Radar Antenna (24nm)
- Raymarine E120 Repeater on the flybridge
- Raymarine E120 in main helm
- Auto pilot
- Search light
- Compass
- Depth Sounder
- Log-Speedometer
- Radar
- Chart Plotter

Bow & Stern

Bow Details

- Anchor chain compartment
- 25kg DELTA anchor
- 75 m chain (dia. 10 mm)
- 1700W 24V winch
- Stainless steel anchor nose
- 2 fore cleats
- 3 electric wipers with windshield washer
- Sunbathing cushions
- Drinks holders
- Handrails

Stern Details

- Integrated fairleads in stainless steel
- Two stainless steel cleats
- Aft Antifouling paint
- Double salon door in stainless steel and tempered crystal glass
- Hydraulic Bathing platform/tender lift - maximum lifting capacity 450 kg (dimensions: 3.45m x 1.1m) with teak flooring
- Telescopic electro-hydraulic gangway (length 2.7 m) - lifting capacity 300kg
- Bathing platform steps in stainless steel and teak

- Mooring hook
- Shore power sockets
- Shower with hot/cold water
- Teak laid cockpit floor
- Cockpit bench dimmers for cockpit light

Engineer Room

- 2 x MAN R6 Engines - 919 Hours
- 1 x Cummins 21.5 Kw Generator - 5,829 Hours
- Racor Filters
- 2 x Cruisair A/C Compressors - 48,000 BTU/Hr
- Seafari Watermaker - 30 gallons/hour
- Seafire FD 1000M
- 8 x 12V Service Batteries (95ah)
- 4 x 12V Engine Batteries (95ah)
- 1 x 12V Gens Battery (75ah)
- Seakeeper - M7000

Electrical Equipment

DON'T TELL MAMMA is wired for 220/50hz - European specifications

Exclusions

Owner's personal belongings.

Disclaimer

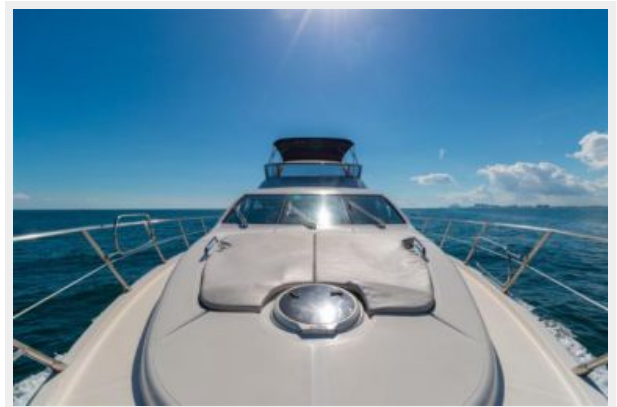
The Company offers the details of this vessel or yacht in good faith but cannot guarantee or warrant the accuracy of this information nor warrant the condition of the vessel. A buyer should instruct his representatives, agents, or his surveyors, to investigate such details as the buyer desires validated. This vessel or yacht is offered subject to prior sale, price change, or withdrawal without notice.

PHOTOS



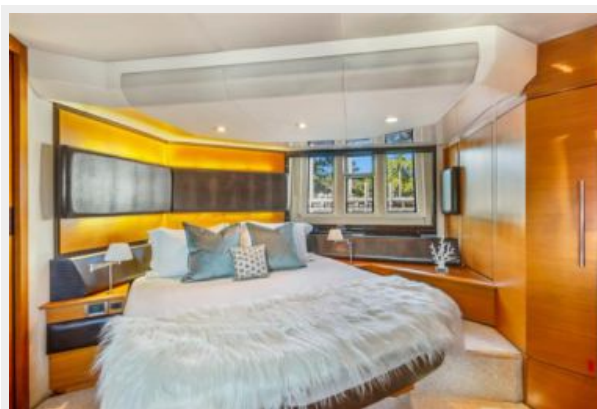
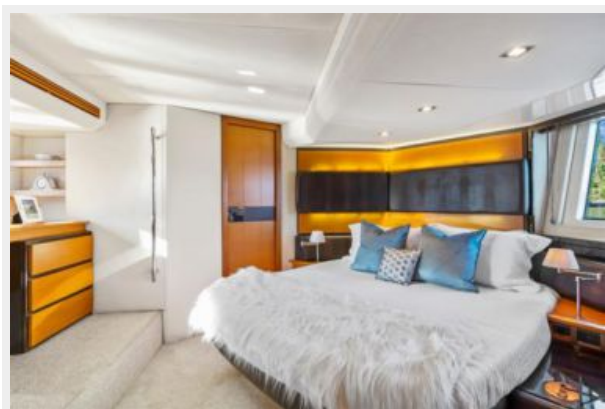




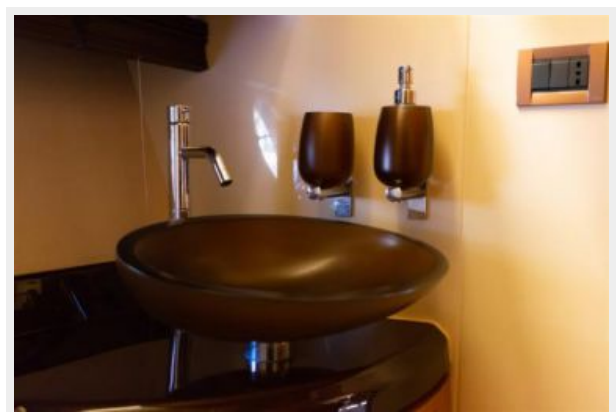














CONTACTS

Andrey Shestakov, leading yacht broker of the sales department of Shestakov Yacht Sales Inc. Shestakov Yacht Sales Inc., the official representative of the Miami/Fort Lauderdale FL headquarters.

Contact details

Email: **andrey@shestakovyachtsales.com**

Web: shestakovyachtsales.com/en/

Telephones

USA: **+1(954)274-4435**

Office hours

Monday – Saturday: **9:00 - 21:00 EDT**

Sunday: **closed**

Address



Harbour Towne Marina, 850 NE 3rd St,
STE 213, Dania, FL 33004