

MIZU — OCEANFAST



Builder: OCEANFAST

Year Built: 2004

Model: Mega Yacht

Price: PRICE ON APPLICATION

Location: United States

LOA: 174' 0" (53.04m)

Beam: 29' 0" (8.84m)

Max Draft: 8' 3" (2.50m)

Cruise Speed: 24 Kts. (28 MPH)

Max Speed: 28 Kts. (32 MPH)

Our experienced yacht broker, Andrey Shestakov, will help you choose and buy a yacht that best suits your needs **MIZU — OCEANFAST** from our catalogue. Presently, at Shestakov Yacht Sales Inc., we have a wide variety of yachts available on our sale's list. We also work in close contact with all the big yacht manufacturers from all over the world.

If you would like to buy a yacht **MIZU — OCEANFAST** or would like help answering any questions concerning purchasing, selling or chartering a yacht, please call **+1(954)274-4435**

TABLE OF CONTENTS

TABLE OF CONTENTS	2
SPECIFICATIONS	6
Overview	6
Basic Information	8
Dimensions	8
Speed, Capacities and Weight	8
Accommodations	8
Hull and Deck Information	9
Engine Information	9
DETAILED INFORMATION	10
Vessel Information	10
Specifications	10
Exclusions	12
Disclaimer	12
PHOTOS	13
Profile	13
Profile	13
Profile	13
Profile	13
Profile	13
Bow	14
Bow	15
Bow	15
Guest Head Newport	16
Stateroom Newport	16
Stateroom Newport	16
Guest Head Annapolis	17
Guest Head Annapolis	17

Guest Head Annapolis	17
Guest Head Charleston	17
Guest Head Charleston	18
Stateroom Charleston	18
Guest Head Norfolk	18
Stateroom Charleston	18
Guest Head Norfolk	19
Stateroom Norfolk	19
Captain Quarters	19
Crew Quarters	19
Crew Quarters	20
Crew Quarters	20
Crew Quarters	20
Crew Quarters	20
Crew Quarters	20
Crew Quarters	21
Crew Quarters	21
Dining	21
Dining	21
Galley	22
Galley	22
Galley	22
Galley	22
Hallway	23
Galley	23
Hallway	23
Stairs	23
Stairs	24
Stairs	24
Stairs	24

Master Closet	24
Master Bath	25
Master Bath	25
Master Bath	25
Master Stateroom	25
Master Stateroom	26
Master Salon	26
Master Salon	26
Master Salon Aft Deck	26
Master Salon Aft Deck	26
Master Salon Aft Deck	26
Master Salon Aft Deck	27
Pilot House	27
Pilot House	27
Pilot House	27
Pilot House	27
Pilot House	27
Salon	28
Salon	28
Salon	28
Sky Deck	28
Sky Deck	28
Sky Deck	28
Engine Room	29
Sky Deck	29
Engine Room	29
Engine Room	29
Engine Room	30
Engine Room	30

Engine Room	30
Engine Room	30
Engine Room	31
Engine Room	31
Engine Room	31
Engine Room	31
CONTACTS	32
Contact details	32
Telephones	32
Office hours	32
Address	32

SPECIFICATIONS

Overview

To schedule a private FaceTime or video tour, contact me and make arrangements.

In Japanese philosophy, there are five elements, of which Mizu or water is one. It represents all things fluid and flowing but also relates to adaptability, flexibility and magnetism. Renamed by her current owner in 2011 and extensively refit in 2016, 53m MIZU represents many characteristics attributed to her name. Her striking and almost military exterior exudes character and adventure. Her contemporary interior spaces are calm yet vibrant and an impressive range of entertainment features, including an on-deck jacuzzi and basketball court, evoke guest interaction and energy. With an exhilarating top speed of 28 knots and an impressive long-range cruising capability, this ocean-going yacht lives up to her name. ***Not available for sale to U.S. residents, while in U.S. waters***

Overview

The 53m yacht was custom built in 2004 by Oceanfast in Australia & was last refitted in 2016 with well over \$5m USD spent. Sam Sorgiovanni is responsible for her beautiful & unique exterior & interior design. Originally named Sea Bowld, "MIZU" is built to explore the world's oceans in style & comfort. Constructed with an Aluminium hull & Aluminium superstructure, she is capable of cruising at 24 knots, a max speed of 28 knots & affords a range of 4,500 nautical miles. "MIZU" is built to some of the highest standards in the world, giving her a perfect combination of luxury & grit.

Specifications Year Built - 2004 Builder - Oceanfast Type - Fast Performance Long Range Motor Yacht HSS Classification - Germanischer Lloyds + 100 A5 OC4 Motor Yacht + MC AUT Flag - Cayman Islands Hull Number - 078

Dimensions & Tankage Length O.A. - 53.03m (174') Beam - 8.84m (29') Draft - 2.5m (8' 2") Fuel Fuel - 88,300 Litres (23,326.38 US Gallons) Water - 15,200 Litres (4,015.42 US Gallons) Lube Oil - 2,200 Litres (581.18 US Gallons) Dirty Oil 2,300 Litres (607.60 US Gallons) Grey Water - 6,200 Litres (1,637.87 US Gallons) Black Water - 4,900 Litres (1,294.44 US Gallons) Bilge Oil - 2,000 Litres (528.34 US Gallons)

Tonnage Gross - 498 Tons Displacement - 378 Tons (Full Load)

Construction Hull & Superstructure - Aluminium Interior / Exterior Designer - Sam Sorgiovanni

Accommodations Guests - 10 Guests in 5 Cabins Crew - 8 Crew in 4 Cabins Plus 2 in Captain's Cabin

Refit Year Completed - 2016 Budget - Excess of \$5m USD, Full Breakdown Available

Mechanical Equipment Main Engines - 2 x MTU 16V4000 M90 Engine Hours August 2018 Port Main Engine - 3,485 hrs Starboard Main Engine - 3,485 hrs Gearbox - 2 x ZF Reverse Reduction Gearboxes (ZF7540) Fuel - Diesel Propulsion - Twin Screw Propellers - 2 x Brunton Fixed Pitch Propellers (1590mm) Rudder Angle - ± 35 Degrees Steering System - Seastate Hydraulic Steering System Stabilizers - Seastate Ride Control System Bow thruster - Quantum Thruster QT120 Generators - 2 x Northern Lights 150kW(E) (M6108AZ) Generator Hours August 2018 - Port: 10,533 HRS - Starboard: 3,861 HRS Electricity - 120/208/440V/60Hz Shore Power - 2 x 100Amp / 480V Main Engine Start - 24V DC Starting Batteries (4 x 12V, 200Ah) Service - 24V DC Power for Non-Essential Services Generator Start - 24V DC Starting Batteries (4 x 12V, 200Ah) Air Conditioning - N.R. Koeling BV, 3 x Air Handler Units Water Maker - H.E.M. Duplex 30/2100 RO Plants (16,000 litres/day total) Water System - H.E.M. Type 3300 Water Treatment Plant Toilet System - JETS Vacuum Toilet System Sewage System - Hamann Wassertechnik Sewage Treatment Plant (STP) Fuel Centrifuge - Alfa Laval MAB104 Fuel Separator - Racor Fuel Separator

Audio and Visual Savant Control System Sonance Interior Speakers JL Audio Exterior Speakers

Electronics, Communication and Navigation: Satellite Compass - Furuno SC-60 Gyro Compass - C-Plath Navigate 2100 / SR2100 Automatic Pilot - C-Plath Navipilot V HSC Echo Sounder - Furuno Navigational Echo Sounder FE-700 Radar - Furuno X-Band FAR-2127 Furuno S-Band FAR-2137S AIS - Furuno Universal AIS FA-150 GPS - Furuno GPS Navigator GP-170 Chart Plotter - Transas Navi-Sailor 4000 Navtex - 1 x Furuno NX-500 Searchlights - 2 x Sanshin S.D. Searchlight Camera(s) - 7 x Pelco CCTV Cameras with Central Recording Satellite Communications - KVH V3-IP SASS & LRIT - 2 x Furuno Inmarsat C IC-306 Fleet Broadband - KVH V3-IP VHF - 7 x ICOM IC-M602 Portable VHF - 12 x ICOM UHF Radios SSB - 2 x ICOM FM-8500 Landline/Intercom - 4G LTE SIM & Internal Intercom System **Anchoring System** Anchor Windlasses - 2 x MUIR VRC18000 Polished SS Vertical Anchor Windlass (2) MUIR VR18000 Polished SS Vertical Mooring Windlass Capstans (2) 675kg Fully Balanced HHP Poole Anchors (2) Sections of 192.5m of 24mm Grade U3 Galvanized Studlink Chain

Boat Cranes and Davits (2) Nautical Structures EZ-5500-LD-MCA Hydraulic Deck Cranes Passerelle - Yacht-Tec Retractable Passerelle (2) Mar-Quipt 12-Step Sea Stair Side boarding ladders Jacuzzi Swim Platform Removable Sun Awnings Over Sundeck and After Upper Deck

Galley Equipment Vulcan Six Ring Electric Cooktop Vulcan Electric Combination Oven (2) Hobart Electric Combination Oven and Steamer Vulcan VMB Single Broiler (Grille), Built-In Miele Electric Deep Fryer Amana Microwave Oven Kitchen Aid Under Sink Waste Disposal Unit Hobart Dishwasher Subzero Full Height Wine Storage Subzero Full Height Refrigerator Scotsman Under Counter Compact Cuber Ice Maker General Electric Trash Compactor Fire Suppression Systems SEMCO Hi-Fog Water Mist, Fixed Fire Fighting System Concilium Fire Detection System Engine Room CO2 Fire Extinguishing System Portable Fire Extinguishers Fire Hoses and Nozzles Fireman's Outfit and Breathing Apparatus Security (7) Pelco CCTV Cameras and Central Recording (5) Viewing Locations (Bridge, Captain's Cabin, Crew Mess, Engineer's Cabin, Engine Control Room)

Basic Information

Category: Mega Yacht

Model Year: 2004

Year Built: 2004

Refit Year: 2016

Country: United States

Registration #: MMSI-31993400

Fly Bridge: Yes

Dimensions

LOA: 174' 0" (53.04m)

Beam: 29' 0" (8.84m)

Max Draft: 8' 3" (2.50m)

Speed, Capacities and Weight

Cruise Speed: 24 Kts. (28 MPH)

Max Speed: 28 Kts. (32 MPH)

Displacement: 833347350.36 Pounds

Gross Tonnage: 498 Pounds

Water Capacity: 4015.4151904 Gallons

Holding Tank: 341.838635288 Gallons

Fuel Capacity: 23326.3921916 Gallons

Accommodations

Total Cabins: 5

Total Heads: 7

Captain Cabin: True

Crew Cabin: 5

Hull and Deck Information

Hull Material: Aluminum

Deck Material: Teak

Hull Color: Pearl

Exterior Designer: Sam Sorgiovanni

Interior Designer: Sam Sorgiovanni

Engine Information

Engines: 2

Manufacturer: MTU

Model: 16V 4000 M90

Engine Type: Inboard

Fuel Type: Diesel

DETAILED INFORMATION

Vessel Information

Not available for sale to U.S. residents, while in U.S. waters

Highlights and Key Features:

- **Pliske survey from the seller performed in summer of 2020 can be provided for qualified buyers**
- Freshly reconditioned teak decks (1/2020)
- New Lumishore jacuzzi underwater lights (1/2020)
- Full refit completed (2016)
- Bottom Job and Haulout (10/2019)
- Incredibly unique and head-turning design
- Germanischer Lloyds build classification + HSS Rated
- Extremely shallow draft of sub 8' 6"
- A remarkable range of 4,500 nautical miles at 13 knots (transpacific and transatlantic)
- Capable of reaching speeds in excess of 28 knots
- Dedicated Owner's deck stateroom
- Impressive sun deck with 14-person Jacuzzi pool, bar & sun loungers
- Storage for two 25' tenders on the aft deck
- Extremely quiet underway
- Expansive exterior decks for entertaining
- Oversized windows throughout
- Asian inspired Modern-Deco interior design
- Upper deck home theatre and latest AV/IT throughout

Specifications

The 53m yacht was custom built-in 2004 by Oceanfast in Australia & was last refitted in 2016 with well over \$5m USD spent. Sam Sorgiovanni is responsible for her beautiful & unique exterior & interior design. Originally named Sea Bowld, "MIZU" is built to explore the world's oceans in style & comfort. Constructed with an Aluminium hull & Aluminium superstructure, she is capable of cruising at 24 knots, a max speed of 28 knots & affords a range of 4,500 nautical miles. "MIZU" is built to some of the highest standards in the world, giving her a perfect combination of luxury & grit.

Specifications Year Built - 2004 Builder - Oceanfast Type - Fast Performance Long Range Motor Yacht HSS Classification - Germanischer Lloyds + 100 A5 OC4 Motor Yacht + MC AUT Flag - Cayman Islands Hull Number - 078

Dimensions & Tankage Length O.A. - 53.03m (174') Beam - 8.84m (29') Draft - 2.5m (8' 2") Fuel Fuel - 88,300 Litres (23,326.38 US Gallons) Water - 15,200 Litres (4,015.42 US Gallons) Lube Oil - 2,200 Litres (581.18 US Gallons) Dirty Oil 2,300 Litres (607.60 US Gallons) Grey Water - 6,200 Litres (1,637.87 US Gallons) Black Water - 4,900 Litres (1,294.44 US Gallons) Bilge Oil - 2,000 Litres (528.34 US Gallons)

Tonnage Gross - 498 Tons Displacement - 378 Tons (Full Load)

Construction Hull & Superstructure - Aluminium Interior / Exterior Designer - Sam Sorgiovanni

Accommodations Guests - 10 Guests in 5 Cabins Crew - 8 Crew in 4 Cabins Plus 2 in Captain's Cabin

Refit Year Completed - 2016 Budget - Excess of \$5m USD, Full Breakdown Available

Mechanical Equipment Main Engines - 2 x MTU 16V4000 M90 Engine Hours March 2020 Port Main Engine - 4,700 hrs Starboard Main Engine - 4,700 hrs Gearbox - 2 x ZF Reverse Reduction Gearboxes (ZF7540) Fuel - Diesel Propulsion - Twin Screw Propellers - 2 x Brunton Fixed Pitch Propellers (1590mm) Rudder Angle - ± 35 Degrees Steering System - Seastate Hydraulic Steering System Stabilizers - Seastate Ride Control System Bow thruster - Quantum Thruster QT120 Generators - 2 x Northern Lights 150kW(E) (M6108AZ) Generator Hours March 2020 - Port: 11,200 HRS - Starboard: 4,700 HRS Electricity - 120/208/440V/60Hz Shore Power - 2 x 100Amp / 480V Main Engine Start - 24V DC Starting Batteries (4 x 12V, 200Ah) Service - 24V DC Power for Non-Essential Services Generator Start - 24V DC Starting Batteries (4 x 12V, 200Ah) Air Conditioning - N.R. Koeling BV, 3 x Air Handler Units Water Maker - H.E.M. Duplex 30/2100 RO Plants (16,000 litres/day total) Water System - H.E.M. Type 3300 Water Treatment Plant Toilet System - JETS Vacuum Toilet System Sewage System - Hamann Wassertechnik Sewage Treatment Plant (STP) Fuel Centrifuge - Alfa Laval MAB104 Fuel Separator - Racor Fuel Separator

Audio and Visual Savant Control System Sonance Interior Speakers JL Audio Exterior Speakers

Electronics, Communication and Navigation: Satellite Compass - Furuno SC-60 Gyro Compass - C-Plath Navigate 2100 / SR2100 Automatic Pilot - C-Plath Navipilot V HSC Echo Sounder - Furuno Navigational Echo Sounder FE-700 Radar - Furuno X-Band FAR-2127 Furuno S-Band FAR-2137S AIS - Furuno Universal AIS FA-150 GPS - Furuno GPS Navigator GP-170 Chart Plotter - Transas Navi-Sailor 4000 Navtex - 1 x Furuno NX-500 Searchlights - 2 x Sanshin S.D. Searchlight Camera(s) - 7 x Pelco CCTV Cameras with Central Recording Satellite Communications - KVH V3-IP SASS & LRIT - 2 x Furuno Inmarsat C IC-306 Fleet Broadband - KVH V3-IP VHF - 7 x ICOM IC-M602 Portable VHF - 12 x ICOM UHF Radios SSB - 2 x ICOM FM-8500 Landline/Intercom - 4G LTE SIM & Internal Intercom System **Anchoring System** Anchor Windlasses - 2 x MUIR VRC18000 Polished SS Vertical Anchor Windlass (2) MUIR VR18000 Polished SS Vertical Mooring Windlass Capstans (2) 675kg Fully Balanced HHP Poole Anchors (2) Sections of 192.5m of 24mm Grade U3 Galvanized Studlink Chain

Boat Cranes and Davits (2) Nautical Structures EZ-5500-LD-MCA Hydraulic Deck Cranes Passerelle - Yacht-Tec Retractable Passerelle (2) Mar-Quipt 12-Step Sea Stair Side boarding ladders Jacuzzi Swim Platform Removable Sun Awnings Over Sundeck and After Upper Deck

Galley Equipment Vulcan Six Ring Electric Cooktop Vulcan Electric Combination Oven (2) Hobart Electric Combination Oven and Steamer Vulcan VMB Single Broiler (Grille), Built-In Miele Electric Deep Fryer Amana Microwave Oven Kitchen Aid Under Sink Waste Disposal Unit Hobart Dishwasher Subzero Full Height Wine Storage Subzero Full Height Refrigerator Scotsman Under Counter Compact Cuber Ice Maker General Electric Trash Compactor Fire Suppression Systems SEMCO Hi-Fog Water Mist, Fixed Fire Fighting System Concilium Fire Detection System Engine Room CO2 Fire Extinguishing System Portable Fire Extinguishers Fire Hoses and Nozzles Fireman's Outfit and Breathing Apparatus Security (7) Pelco CCTV Cameras and Central Recording (5) Viewing Locations (Bridge, Captain's Cabin, Crew Mess, Engineer's Cabin, Engine Control Room)

Exclusions

Owner's personal belongings.

Disclaimer

The Company offers the details of this vessel or yacht in good faith but cannot guarantee or warrant the accuracy of this information nor warrant the condition of the vessel. A buyer should instruct his representatives, agents, or his surveyors, to investigate such details as the buyer desires validated. This vessel or yacht is offered subject to prior sale, price change, or withdrawal without notice.

PHOTOS

Profile



Profile



Profile



Profile



Profile





Bow



Bow



Bow



Guest Head Newport



Stateroom Newport



Stateroom Newport



Guest Head Annapolis



Guest Head Annapolis



Guest Head Annapolis



Guest Head Charleston



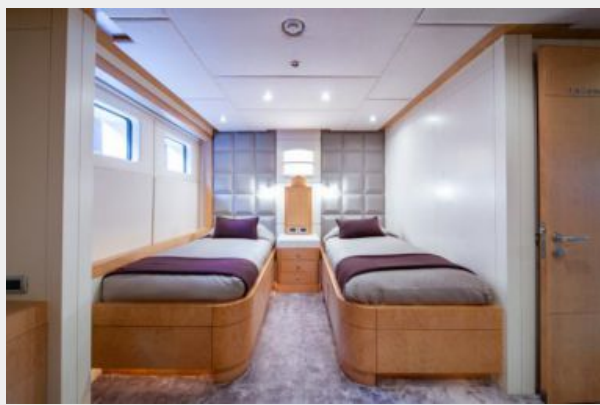
Guest Head Charleston



Stateroom Charleston



Stateroom Charleston



Guest Head Norfolk



Guest Head Norfolk



Stateroom Norfolk



Captain Quarters



Crew Quarters



Crew Quarters



Crew Quarters



Crew Quarters



Crew Quarters



Crew Quarters



Crew Quarters



Dining



Dining



Galley



Galley



Galley



Galley



Galley



Hallway



Hallway



Stairs



Stairs



Stairs



Stairs



Master Closet



Master Bath



Master Bath



Master Bath



Master Stateroom



Master Stateroom



Master Salon



Master Salon



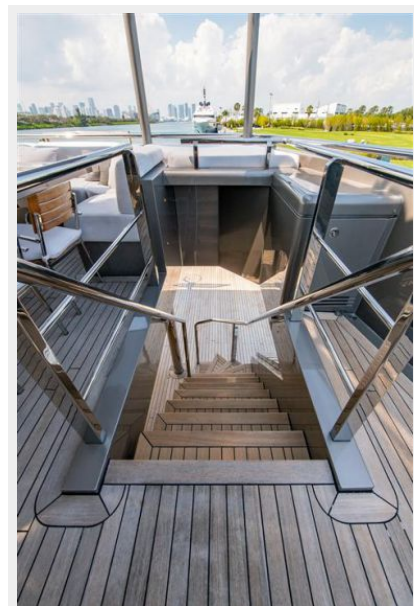
Master Salon Aft Deck



Master Salon Aft Deck



Master Salon Aft Deck



Master Salon Aft Deck



Pilot House



Pilot House



Pilot House



Pilot House



Pilot House



Salon



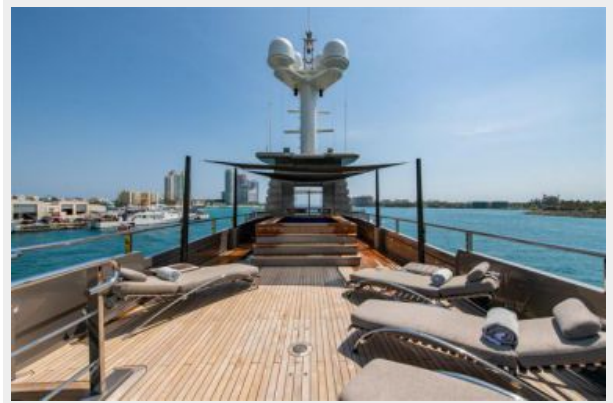
Salon



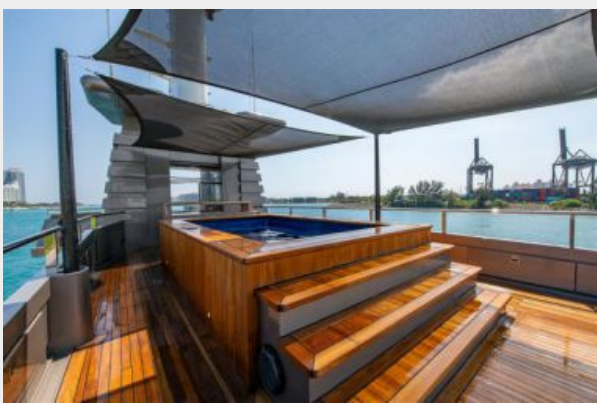
Salon



Sky Deck



Sky Deck



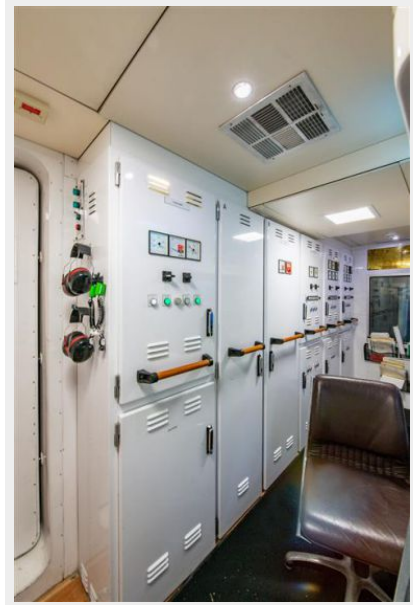
Sky Deck



Sky Deck



Engine Room



Engine Room



Engine Room



Engine Room



Engine Room



Engine Room



Engine Room



Engine Room



Engine Room



Engine Room



Engine Room



CONTACTS

Andrey Shestakov, leading yacht broker of the sales department of Shestakov Yacht Sales Inc. Shestakov Yacht Sales Inc., the official representative of the Miami/Fort Lauderdale FL headquarters.

Contact details

Email: andrey@shestakovyachtsales.com

Web: shestakovyachtsales.com/en/

Telephones

USA: +1(954)274-4435

Office hours

Monday – Saturday: **9:00 - 21:00** EDT

Sunday: **closed**

Address



Harbour Towne Marina, 850 NE 3rd St,
STE 213, Dania, FL 33004