

MS. MONICA — OUTER REEF YACHTS



Судостроитель: OUTER REEF YACHTS

Год постройки: 2006

Модель: SHELBY

Цена: ЦЕНА ЯХТЫ ПО ЗАПРОСУ

Местонахождение: United States

Длина общая: 80' 0" (24.38m)

Ширина: 21' 0" (6.40m)

Макс. осадка: 5' 6" (1.68m)

Купить **MS. MONICA — OUTER REEF YACHTS** а также выбрать подходящую вам яхту из нашего каталога яхт вам поможет опытный яхтенный брокер Андрей Шестаков. На сегодняшний день компания **Shestakov Yacht Sales Inc.** имеет большое количество яхт в собственном списке продаж, а также тесно сотрудничает со всеми крупными яхтенными производителями по всему миру.

Для того чтобы купить яхту **MS. MONICA — OUTER REEF YACHTS** а также проконсультироваться по любому вопросу связанному с покупкой, продажей, чартером яхт позвоните по телефону **+7(918)465-66-44**.

ОГЛАВЛЕНИЕ

ОГЛАВЛЕНИЕ	2
ХАРАКТЕРИСТИКИ	5
Обзор	5
Основная информация	5
Размеры	5
Скорость, вместимость и масса	5
Размещение	6
Корпус и палуба	6
Информация о двигателе	6
ПОДРОБНОЕ ОПИСАНИЕ	7
Overview	7
Main Salon	7
Master Stateroom	7
Lower Foyer	8
Lower Guest Stateroom Hallway	8
VIP Stateroom	8
Guest Stateroom	8
Crew Quarters	8
Galley	8
Pilothouse	9
Flybridge	9
Aft Deck	9
Swim Platform	10
Hull	10
Exterior Equipment	10
Communication and Navigation	10
Main Machinery	11
Electrical Equipment	11

Broker Comments	12
Exclusions	12
Исключения	12
Отказ от ответственности	12
ФОТОГРАФИИ	13
Main Salon	13
Main Salon Looking Aft	13
Galley	13
Galley	13
Galley	13
Galley	13
Aft Lower Foyer	14
Master Stateroom	14
Master Bath	14
Forward Stairway to Guest Staterooms	14
VIP Stateroom	14
Guest Bath	14
Twin Stateroom	15
Laundry Adjacent to Twin Stateroom	15
Pilothouse	15
Helm	15
Flybridge	15
Flybridge Seating	15
Upper Helm	16
Boat Deck	16
Side Deck	16
Aft Deck	16
Aft Deck	16
Crew Quarters	16

Captain Cabin	17
Crew Head	17
Engine Room	17
Engine Room	17
Port Bow Running	17
Port Stern Running	17
Starboard Running	18
Aerial	18
Layout	18
КОНТАКТЫ	19
Контактная информация	19
Телефоны	19
Время работы	19
Адрес	19

ХАРАКТЕРИСТИКИ

Обзор

MS. MONICA is a proven blue water vessel that was built for comfort and long range cruising. The full-time crew have maintained MS. MONICA to the highest standards. Cruise speeds in the upper teens make running from weather easy and hull-down operation increases efficiency for great range. Spacious living areas that encompass clever interior design allows access to the master stateroom from the salon staircase or through a door from the master walk-in closet to the forward guest stateroom hallway. All three staterooms have ensuite heads, A/V systems, and plenty of storage and hanging space. The crew quarters are quite large and can sleep four. Another unique feature MS. MONICA has to offer is a 2,200lb davit on the bridge deck, able to move and carry an 18' Novurania with a Yamaha F115 motor. When the tender is launched, the bridge deck becomes a huge entertainment or lounging area, in keeping with the other areas aboard which feel larger than most vessels in her size range. MS. MONICA is in pristine condition and well-maintained, she is exactly what our current market wants. Loads of custom features set this elegant and comfortable yacht apart from the rest of the market, especially in this size range. Please call for more details.

Основная информация

Тип судна: SHELBY

Подкатегория: Raised Pilothouse

Модельный год: 2007

Год постройки: 2006

Страна: United States

Размеры

Длина общая: 80' 0" (24.38m)

Ширина: 21' 0" (6.40m)

Макс. осадка: 5' 6" (1.68m)

Скорость, вместимость и масса

Водоизмещение: 180000 Pounds

Вместимость воды: 800 Gallons

Вместимость сточного бака: 200 Gallons **Объем топливного бака:** 3500 Gallons

Размещение

Всего кают: 3

Спальные места: 6

Всего ком. состава: 4

Каюта капитана: Да

Каюты экипажа: 2

Койки экипажа: 4

Спальных мест экипажа: 4

Комм. состав экипажа: 1

Корпус и палуба

Материал корпуса: Fiberglass

Информация о двигателе

Двигатели: 2

Производитель: Caterpillar

Модель: C32

Тип топлива: Diesel

ПОДРОБНОЕ ОПИСАНИЕ

Overview

MS. MONICA is a proven blue water vessel that was built for comfort and long range cruising. The full-time crew have maintained MS. MONICA to the highest standards. Cruise speeds in the upper teens make running from weather easy and hull-down operation increases efficiency for great range. Spacious living areas that encompass clever interior design allows access to the master stateroom from the salon staircase or through a door from the master walk-in closet to the forward guest stateroom hallway. All three staterooms have ensuite heads, A/V systems, and plenty of storage and hanging space. The crew quarters are quite large and can sleep four. Another unique feature MS. MONICA has to offer is a 2,200lb davit on the bridge deck, able to move and carry an 18' Novurania with a Yamaha F115 motor. When the tender is launched, the bridge deck becomes a huge entertainment or lounging area, in keeping with the other areas aboard which feel larger than most vessels in her size range. MS. MONICA is in pristine condition and well-maintained, she is exactly what our current market wants. Loads of custom features set this elegant and comfortable yacht apart from the rest of the market, especially in this size range. Please call for more details.

Main Salon

Large windows surround the salon. The covered side decks provide shade but still allow a tremendous amount of natural light to fill this room. It is open to the galley, separated by a breakfast bar with 3 stools on the forward end and double doors open to the aft deck. Seating is abundant on a large, sectional sofa and 2 chairs. The TV is housed in a cabinet on the starboard side. A stairway on the forward, starboard side leads down to a lower foyer leading to a day head, engine room and aft entrance to the master stateroom. • Custom sectional sofa with storage • 2 x Chairs • TV console • LED lighting • Carpeted sole • Storage cabinets • AV equipment housed forward of TV

Master Stateroom

The full-beam master stateroom has a large, walk-around, centerline berth with lots of natural light from 4 portlights. This warm space, loaded with semigloss cherry walls and cabinetry, may be entered by way of the lower foyer at the base of the salon stairway or through a hidden door which connects the master walk-in closet to the forward hallway to the guest staterooms. The master head has his and her sinks, as well as a toilet and shower. • Mid-ship location for least movement and quietest location aboard • Master berth with drawers beneath and upholstered headboard • Bedside tables with granite tops and storage • Reading lights on both sides • Walk-in closet • 4 x Opening port lights • Soji screens over portlights • Carpeted sole • Private entrance • Easy access to engine room and switch panel • TV • Sonos sound bar

Lower Foyer

This clever, custom feature allows private access to the master stateroom, forward access to the engine room and easy access to a day head from the salon. This head also may function as a second head for the master stateroom.

Lower Guest Stateroom Hallway

• Carpeted sole • Linen closet • Miele front-load washer and dryer • VIP stateroom • Guest stateroom

VIP Stateroom

The comfortable VIP Stateroom is located in the forepeak and is accessed from the pilothouse stairway. Natural light keeps this area light and bright. • Centerline queen-sized berth • 2 x Hanging lockers • Storage drawers • 2 x Opening port-lights • Overhead hatch • Reading lights • Carpeted sole • Ensuite head

Guest Stateroom

The Guest Stateroom is located on the port side, forward of the master stateroom. The side-by-side berths are large and comfortable. • 2 x Berths with bedside table between • Reading lights • Opening port light • Hanging locker • Storage drawers • Carpeted sole • Ensuite head

Crew Quarters

The main entrance to the crew quarters is through a watertight door in the transom. A roomy crew lounge has been customized to include a fold-down pullman berth in addition to a larger berth utilized by dropping the dinette table. A small galley is adjacent to the dinette. Aft of the galley is a large area with hanging space for clothes or dive gear, as well as 2 SubZero freezer drawers and a 2nd washer and dryer set. On the starboard side are the full crew head and a captain's room with a large, double berth and loads of storage cabinets. The engine room may be accessed from this area as well. • Accommodations for 4 crew • Full head • Crew dinette • Crew galley • Freezer drawers • Bosch washer and dryer • Under-counter refrigeration and freezer • Sink and faucet • Engine room access

Galley

Forward of the salon is 3 stools facing a breakfast bar and share a counter with the large, U-shaped galley on the port side. Another counter against the starboard side covers a dual-zone wine refrigerator, cocktail refrigerator and ice maker. This differs from other 80's, which have a

day head here rather than down the stairs. The galley is separated from the pilothouse, allowing for proper night-running with low light at the helm. • GE Profile ceramic cooktop • GE Profile convection oven • GE Profile convection microwave • Miele dishwasher • KitchenAid trash compactor • Jenn-air refrigerator/freezer • Stainless steel sink • Disposal • Insta-Hot water • Quartz counters • SubZero dual zone wine refrigerator • U-Line refrigerator • U-Line ice maker • Teak and holly sole

Pilothouse

The large pilothouse is separated from the galley by a bulkhead and door. An elevated, U-shaped seating area with dining table aft of the helm has great views. Twin Stidd chairs are positioned within easy reach of the controls and electronics. Sightlines are great and doors to port and starboard side decks are mere steps away. On the port side of the pilothouse, stairs lead up to the flybridge and another set of stairs lead down to staterooms.

Flybridge

The enormous Flybridge is accessed from the staircase on the aft deck or the staircase from the Pilothouse. The upper helm is forward on the centerline with full controls and instrumentation and 2 Stidd chairs. A 3-sided enclosure is attached to the hardtop, which covers the port and starboard seating as well as the helm area. Aft of that area are large, molded-in consoles to port and starboard housing a stainless steel gas grill, sink and Eskimo ice chipper with an insulated ice bin sectioned for long-term vegetable storage too. Aft of that area is a 2,200 lb davit for lifting the 18' Novurania 550DL with Yamaha F115. • ACR Globalfix 406/GPIRB CAT 1 satellite EPIRB w/autorelease mounted on boat deck • KVH Tracphone 252 Inmarsat worldwide coverage SAT phone connected to phone system • KVH Tracvision G6 24" SAT TV tracking system • 2 x Furuno 15" color displays-1 computer; 1 Furuno Navnet • Nauticomp 3 button, weather-proof mouse panel mount • Furuno FM 3000 VHF • 2 x Raymarine ST 50 Depth Systems w/transducers fore and aft • Simrad AP 25; full 2nd station autopilot control • Simrad R3000X handheld remote for autopilot • Simrad FU 25 follow up steering lever • 2 x Stidd helm chairs • 2 x L-shaped seating benches with storage • Eskimo ice chipper with insulated chest for ice storage and split for long term vegetable storage • Stainless Steel gas bbq • Sink and faucet • Cabinet storage • 2,200 lb Davit • 18' Novurania 550DL with Yamaha F115 • Hardtop with 3 sided enclosure

Aft Deck

The large aft deck is centered by a table which easily seats 6+ guests. A bench runs across the middle, aft section and 4 chairs surround the sides and forward side. Doors protect access to the stairs to the swim platform and the bulwarks port and starboard contain doors as well. Also, the covered side decks have canvas wing doors and a stairway leads to the flybridge. Double doors open to the salon and the beautiful teak sole has a full Sunbrella cover. • Easy access from

every side • LED overhead lighting • Storage inside aft bench • Teak table with cover • Teak sole with cover • Bosun's locker • Removable shade protects the aft bench and swim platform

Swim Platform

Curved, protected stairs to port and starboard lead to the swim platform from the aft deck and removable hoop rails run along the aft edge. • Teak stairs and platform • 2 x 50 amp service, one on Cablemaster • Tow cleats with backing plates • Freshwater shower • Shore water connection • Dive compressor air outlet • Water-tight transom door to crew quarters

Hull

• Hand laid-up FRP hull w/PVC core sandwich construction above waterline and vinylester lamination for osmosis protection • Full-length longitudinal engine stringers and athwartship stringers • Windows with 3/8 in. tempered glass in salon, 1/2 in. tempered glass in pilothouse • Rub rails with stainless steel capping • Built-in swim platform with stainless steel swim ladder and removable U-Rails. • Quiet-Roll integrated spray rail system

Exterior Equipment

• Quiet Roll integrated spray rail system • 2 x Maxwell VWC4000 hydraulic windlass & dual anchor rollers w/handheld remote • 105 lb. CQR type plow anchor w/400 ft. 1/2" HT chain • 105 lb. Bruce design SS anchor w/400 ft. 1/2" HT chain • 2 x Chain counter for windlass • Cablemaster forward w/90' of cable • Cablemaster aft w/90' of cable • 2 x Shore power inlets w/rotary select switches (fore & aft), shore water inlet and TV/Tel inlet on foredeck • Teak deck around pilothouse, side decks, aft deck and swim platform • SS spiral stairs from aft deck to boat deck • Storage lockers on foredeck • 2200 lb. hydraulic davit • Textiline sunscreens on all pilothouse windows

Communication and Navigation

• CAT electronic LED displays • Glendinning electronic, single lever controls for gears/throttles • 3 x ViewEra flat panel monitors • PC-Based system with Nobletech • Wireless keyboard and mouse • Simrad AP 25 Autopilot • Simrad FU 25 jog stick • 2 x Furuno NavNet control heads • Furuno 72 nm, 12 kw Navnet radar w/6 ft. antenna array • Furuno ARP target plotter • Furuno 48 nm, 4 kw Navnet radar w/3.5 ft. antenna array for close in contacts • 2 x Furuno GP 1920C Navnet for C-map charts • Furuno 600w/1kw sounder • Furuno FA-150 Universal AIS • 2 x Furuno GP-33 GPS • 2 x Furuno FM-3000 VHF • 2 x ACR Spotlight controls • VGA to NTSC converter converts computer video to television video so Furuno info is available in staterooms • Furuno 600w/1 kw Sounder • Simrad AP 25 Autopilot • Simrad FU 25 Followup steering lever • Simard R3000X hand-held remote for autopilot • 4 x Camera system for engine room and aft

deck w/pilothouse controller connected to Navnet systems • Xantrex ProSine 1000w 24v DC inverter for computer and screens • Raymarine ST 60 Speed System • Raymarine ST 60 Wind Speed and Direction Systems • 2 x Raymarine ST 60 Depth Systems (2 transducers, both fore and aft) • GSM fixmount cell phone connected to Panasonic phone system • Brother fax, scanner, printer and copy machine under pilothouse console • GEOSAT EC-01 High Gain WiFi Booster • 3 x Wireless Access (3 com access points located throughout vessel) • ABT Digital Stabilizer led control screen 7.5 sq. ft. fins • ABT Bow and stern thrusters • Windshield wiper and freshwater washer controls • Garmin GPSmap 7610

Main Machinery

The engine room is entered from the crew quarters or the lower foyer from the salon. It is clean and bright with plenty of room to service equipment. • Twin Caterpillar C32 engines (1550 hp ea.) w/ZF transmissions and instruments for dual stations • Aqua drive units • Glendinning engine controls for pilothouse and flybridge and remote control unit with 3 plug-ins (aft deck, Portuguese bridge, and center of flybridge) • ABT Trac hydraulic bow thruster, stern thruster, 38hp each • ABT Trac hydraulic stabilizers w/7.5 sq.ft. fins • Underwater blanketed ceramic exhaust system w/bypass and FRP mufflers • SS propeller shafts w/4-blade Nibral propellers. • Tides packless shaft seals • Second dripless shaft bearing • SS struts w/bearings • SS rudders w/bearings • 2 x Racor 75/1000 max dual fuel filters on main engines • 2 x Racor 75/1000 max single fuel filters for generators • Racor 75/1000 max dual filter for fuel polishing through transfer pump & day tank • Algae X fuel polishing system • Oil change pump for engines and generators • Chilled water A/C system • Max Q Model RO Watermaker 1800/gpd • Water purification system w/softener for washdowns and house use • Prop Speed paint on props, shafts & struts • 4 x Automatic 24v DC and 1 Engine driven bilge pumps • 2 x 220v AC 20 gal. water heaters w/heat exchangers

Electrical Equipment

• 2 x Northern Lights 25kw (60hz) generators w/sound shields • Electric distribution panel w/gauges and circuit breakers for 230/115v AC and 24/12v DC system • 2 x 50 AMP Shore power inlets (fore and aft w/automatic shut off) • 2 x 15 KVA Isolation transformers • 2 x Engine banks w/2 AGM 8DL-255 AH batteries for each bank • 2 x House banks w/2 AGM 8DL-255 AH batteries for each bank • 2 x Generator banks w/one (1) AGM 3IT-105AH battery each • 1 x 60 AMP (24v) and 1 x 20AMP (12v) battery chargers • Cantalupi 155 series 24v overhead halogen light fixtures throughout • 24v DC rope style valance lights in salon and staterooms • 24v DC step lights and automatic wardrobe lights • 2 x 115v AC and 2 x 24v DC engine room blowers • 3 x Exalto dual speed self-parking windshield wipers w/washdown system • One Kahlenburg D-2 dual trumpet air horn w/compressor • 2 x Danforth 5" magnetic compass • DC-DC Converter (24v to 12v) • 2 x Shaft brushes in engine room • Nutone Central vacuum system w/outlets in staterooms and salon/galley • Copper bonding system to all underwater fittings w/zinc anodes • 24v Forward bilge ventilation • Air compressor for horns, tools and fenders

Broker Comments

Ms. Monica is the perfect yacht for any destination of choice due to her shallow draft at only 5.6". She has been upgraded for dependability and is safe for extended periods of cruising in any waters. Previous owners and crew took exceptional care of her to the point she represents herself as a newer model vessel than she is. Ms. Monica warrants an inspection as one will not be disappointed in this vessel. She is ready to cruise at a minutes notice!

Exclusions

Owner's personal effects and artwork. A full inventory of exclusions to be provided at time of fully executed purchase agreement.

Исключения

При продаже яхты исключаются личные вещи владельца.

Отказ от ответственности

Компания предоставляет описание судна или яхты добросовестно, но не может гарантировать точность этой информации, а также не ручается за техническое состояние. Покупатель должен проинструктировать своих агентов или оценщиков исследовать представленную информацию более подробно, по собственному желанию. Продажа судна или яхты, изменение цены или снятие с продажи будет происходить без предварительного уведомления.

ФОТОГРАФИИ

Main Salon



Main Salon Looking Aft



Galley



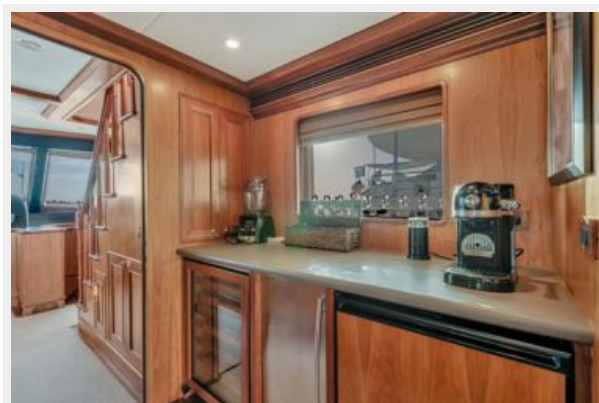
Galley



Galley



Galley



Aft Lower Foyer



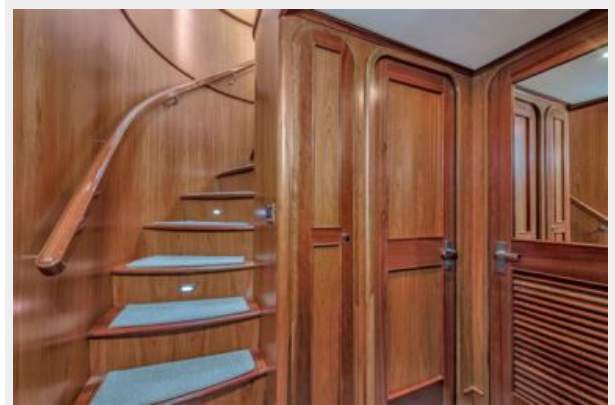
Master Stateroom



Master Bath



Forward Stairway to Guest Staterooms



VIP Stateroom



Guest Bath



Twin Stateroom



Laundry Adjacent to Twin Stateroom



Pilothouse



Helm



Flybridge



Flybridge Seating



Upper Helm



Boat Deck



Side Deck



Aft Deck



Aft Deck



Crew Quarters



Captain Cabin



Crew Head



Engine Room



Engine Room



Port Bow Running



Port Stern Running



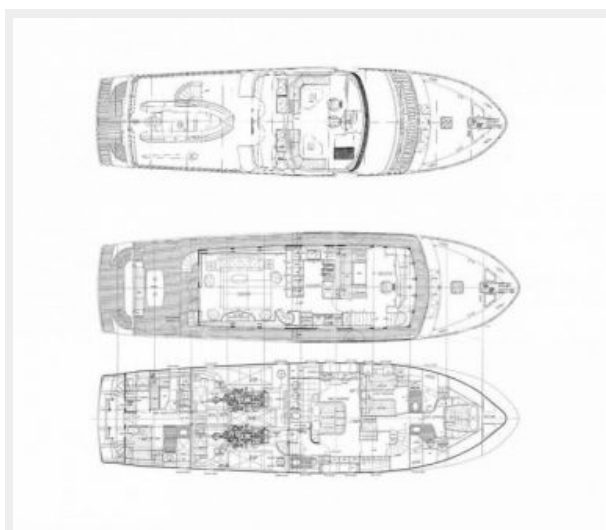
Starboard Running



Aerial



Layout



КОНТАКТЫ

Андрей Шестаков (Andrey Shestakov) – ведущий яхтенный брокер отдела продаж яхт и судов компании Shestakov Yacht Sales Inc. Официальный представитель Shestakov Yacht Sales Inc. для русскоговорящих клиентов в центральном офисе компании в Майами/Форт Лодердейл/Флорида/США.

Контактная информация

Email: andrey@shestakovyachtsales.com

Web: shestakovyachtsales.com

Телефоны

Краснодарский край: **+7(918)465-66-44**

США, Майами, Флорида: **+1(954)274-4435**

Время работы

Понедельник – Суббота: **9:00 - 21:00**
EDT

Воскресенье: **Закрито**

Адрес



Harbour Towne Marina, 850 NE 3rd St,
STE 213, Dania, FL 33004