

## CUT AND RUN — HORIZON



**Builder:** HORIZON

**Year Built:** 2014

**Model:** Cruiser

**Price:** PRICE ON APPLICATION

**Location:** United States

**LOA:** 52' (15.85mm)

**Beam:** 22

**Min Draft:** 4' 4" (1.32mm)

**Max Draft:** 4' 8" (1.42mm)

**Cruise Speed:** 18 Knots Kts. (21 MPH)

**Max Speed:** 21 Knots Kts. (24 MPH)

Our experienced yacht broker, Andrey Shestakov, will help you choose and buy a yacht that best suits your needs CUT AND RUN — HORIZON from our catalogue. Presently, at Shestakov Yacht Sales Inc., we have a wide variety of yachts available on our sale's list. We also work in close contact with all the big yacht manufacturers from all over the world.

If you would like to buy a yacht CUT AND RUN — HORIZON or would like help answering any questions concerning purchasing, selling or chartering a yacht, please call +1(954)274-4435

# TABLE OF CONTENTS

TABLE OF CONTENTS	2
SPECIFICATIONS	4
Overview	4
Basic Information	10
Dimensions	10
Speed, Capacities and Weight	10
Accommodations	10
Hull and Deck Information	11
Engine Information	11
PHOTOS	12
At Anchor	12
Flybridge Deck	12
Aft Deck	12
Sunbeds on Foredeck	12
EXTERIOR	12
AFT DECK TV	12
AFT DECK 1	13
AFT DECK 2	13
AFT DECK 3	13
SALON LOOKING FWD 2	13
SALON LOOKING FWD	13
SALON 1	13
SALON LOOKING AFT	14
SALON 2	14
MASTER 1	14
MASTER 2	14
MASTER VANITY	14
MASTER BATH	14

---

VIP STATEROOM	15
VIP BATHROOM	15
TWIN CABIN	15
WASHER AND SEPAERATE DRYER	15
FLYBRIDGE 2	15
FLYBRIDGE 1	15
TENDER & CRANE	16
Profile	16
Flybridge Layout	16
Salon Layout	16
Cabin Layout	16
CONTACTS	17
Contact details	17
Telephones	17
Office hours	17
Address	17

---

# SPECIFICATIONS

---

## Overview

---

### A. Hull and Main Structure:

1. White Gelcoat finish for hull above water line, exterior deck, furniture and superstructure.
2. One-piece hull lamination and longitudinal girders
3. Hull is built with licensed process SCRIMP™ for improved strength and less weight
4. High density foam cored construction bottom and topsides
5. Solid fiberglass laminate stem, keel.
6. Main Engine girders with high density foam coring
7. Deck & superstructure foam cored reinforcement for rigidity
8. International anti-fouling bottom paint, w/ anti-osmosis treatment

### B. Exterior Deck and Equipment:

1. Nonskid main deck (option: teak deck)
2. Teak covered aft deck & Steps (option).
3. Fiberglass cap rail.
4. S/S rub rail around hull deck joint.
5. Heavy-duty S/S #316 1-1/4" handrail w/1" (stanchions)
6. 10 Mooring cleats on deck.
7. Flag staff on back of flybridge.
8. Fuel and water inlets.
9. Locker for 24V anchor windlass.
10. 50KG DELTA anchor.
11. 150ft of high tensile 3/8" chain and 150ft warp.
12. Roller for anchor.

### Doors, Hatches, Windows & Port Holes

13. SS sliding salon door.
14. Two bow storage lockers with access through flush FRP deck hatches.
15. 2 x Deck hatches with blinds & screens.
16. Engine access through manual deck hatches in cockpit floor with manual struts.
17. Two large hull side frameless window.
18. Six oval portholes.

### Aft Deck Area

19. FRP Curved seat with cushions at aft. deck.
20. Teak cockpit table.
21. Comfortable stairs from aft deck to flybridge.
22. Two steps down to dive/swim platform.

23. Cockpit lockers for storage.
24. 2 side boarding doors
25. Second location bases for aft. deck table
26. S/S transom door with Horizon Logo
27. Dimmer switch for Aft. deck ceiling lighting

### **Swimming Platform Area**

28. Built-in shower with hot/cold water.
29. Swim ladder on STBD side.
30. S/S safety rail on swim platform

### **Light**

31. LED courtesy lights.
32. LED bulwark w/ flush mounted deck lights
33. LED ceiling lights
34. LED white light with 24VDC transformer on Horizon group logo in P&S.
35. Wiring for boat name on transom.
36. AQUA SIGNAL navigation lights.
37. Cockpit down lights.

### **C. Flybridge:**

1. Non-skid flybridge cambered deck with ample drainage.
2. Helm station with stainless wheel and instrument console.
3. Single STIDD helm chair
4. FRP Arch & FRP Hardtop.
5. Wet bar package:
  - FRP module bar with sink, with hot and cold water.
  - DC fridge in bar.
6. FRP table with seating.
7. Sunning bed/ Bench Seat stb side of helm console with cushions
8. Ample locker space for storage.
9. ES1000 Steelhead Crane
10. Covers for F/B Seating and console
11. Covers for aft deck seating, aft deck table and flybridge Table

### **E. Engine Room and Equipments:**

1. Sound and heat insulated compartments
2. Delta –T Moisture eliminators for engine rooms.
3. DC 24Volt lights.
4. One AC outlet.

### **F. Electrical system:**

## General

1. Color-coded wiring for easy identification.
2. Premium DC distribution board with switches, voltmeter and amp meter.
3. Outlets in Salon / bar / galley / cabins / fly-bridge / aft deck / engine room.
4. Vimar switches for lights and electrical outlets.

### AC/DC Main Power System

5. AC power supply from generator / shore power.
6. Selector switch for AC power supply.
7. Remote panel for generator.
8. Four AGM Batteries for engine & generator start up.
9. Two AGM Batteries for ship's service power.
10. BEP battery switch.
11. One battery charger for all batteries.
12. One inverter 3.0 KW.
13. Premium AC panel with switches

### Shore Power System

14. Glendenning shore power 50Amp connector with 100ft cord.

## G. Mechanical system:

### Fuel and Lube Oil System

1. Dual Racor 900FG filters for both engines.
2. One oil change pump for engines, generator and Gearboxes.

### Fresh Water System

3. 270 Gal of water tank integral to hull.
4. Color coded piping for easy identification.
5. Marine grade lines for fresh water system
6. One 17 Gal/110V or 220V water heater.
7. High volume 24V fresh water pump with accumulator tank.
8. Fresh water washdown for anchor.
9. Fresh Water Washdown on Aft Deck.
10. 170 Gal extra fuel tank with extra fuel transfer pump and gauge

### Sanitary System

11. 2 x 30 Gal of holding tank integral to hull
12. Electric fresh water flush toilets, pumps with Y valve for automatic discharge. and dock side

pump out (2).

### **Bilge Water System**

13. 4x electric 24V bilge pumps.
14. High level bilge water alarm.

### **Fire Safety System**

15. One Seafire automatic/manual fire extinguisher in each engine room.

### **Air Conditioning System**

16. Marine Air –central air conditioning for each cabins and salon.
17. Air Cond. Self cleaning system
18. Hyd. Trim tab system

## **H. Interior Design and Equipment:**

### **Interior Finish**

1. HardWood flooring.
2. Tempered safety glass windows.
3. Soft furnishings including roman blinds and accent wood finishing.

### **Heads and Showers General**

4. Wood floor.
5. Corian countertops.
6. Fabric blind over large window.
7. Portlights for ventilation.
8. Basin, cabinets and mirrors.
9. Walk-in separate shower.
10. Linen Cupboard inboard of the M/S shower.
11. Separate toilet.
12. Lights in Overhead.
13. Extractor fan.

### **Saloon**

14. Salon seating covered in fabric.
15. Cabinet for Crystal Glasses.
16. 42" TV in Salon.
17. Two hatches with screen on top of salon roof

### **Galley/ Dinette**

18. Wood floor.

19. Carporee Counter tops.
20. Sub Zero 700TCI with Icemaker
21. Double sinks with tap.
22. Custom accent wood carpentry.
23. Custom wooden carpentry for galley, cupboards and counters.
24. Cutlery & crockery drawers.
25. Pot drawer & spice drawers.
26. Additional storage drawers and cupboards.
27. Under counter trash drawer.
28. Fischer Paykel Dishwasher

#### **VIP stateroom:**

29. Queen bed, semi walk around.
30. Custom wood accent carpentry.
31. Carpeted floor
32. Deck hatch with screen & opening.
33. Fabric blind over large window.
34. Soft furnishings.
35. Night stands with light switches and outlets.

#### **Port Aft guest stateroom:**

36. Custom wood accent carpentry.
37. Carpeted floor.
38. Opening port lights in hull side.
39. Soft furnishings.
40. Twin Bunks with insert Queen size Bed
41. Storage beneath bed.
42. Cabin lights.
43. Shared bathroom with VIP cabin.

#### **Master Stateroom**

44. Custom carpentry for accent finishing.
45. Carpeted floor.
46. Deck hatch with screen & opening.
47. Fabric blinds over large window
48. Queen size bed, semi walk around.
49. Large full height closets.
50. Closets for linens / towels and clothes.
51. Cabin lights.
52. Night stands with light switches and outlets.

#### **Galley**



53. GE- 4 burner Elec. cook top.
54. Extractor over cooktop.
55. GE Microwave / Convection oven.
56. Sub Zero 700TCI refrigerator w/ freezer and Icemaker.

### 1. **Navigation & Instrumentation: & Audio Video Equipment:**

1. 2 x Garmin 8215 15" touch screen chart plotter with GPS antenna on Flybridge.
2. Garmin Auto pilot.
3. Garmin GMR 404 4ft open array 48 mile radar.
4. 2 x Garmin GSD 26 Depth transducers.
5. Additional GM120 display
6. Garmin VHF 300 on flybridge.
7. Garmin XM weather and Radio.
8. Sunshin Spotlight on Flybridge
9. Fusion UD750 Stereo on Flybridge
10. Sirius XM Module and Antenna
11. Fusion 51600 Amp
12. JL Audio Sub woofer & 4 x 7" JL Audio Speakers on Flybridge
13. Sonos Connect on Flybridge
14. Sonos Connect on Aft Deck with 2 x 7" JL Audio Speakers
15. Sonos Connect on Bow with 2 x 7" JL Audio Speakers
16. Sonos Playbar in Salon with 2 x Play 1 speakers and Sub woofer
17. Cisco Linksys router in Salon
18. Sonos Playbar in Master Cabin
19. 48" Samsung LED TV in Salon
20. 32" Samsung LED TV in Master
21. 32" Samsung LED TV in VIP
22. KVH HD7 Satellite TV with Dummy Dome
23. Apple TV in all Cabins
24. Bluray in Salon and Master
25. Sat TV displays on Flybridge Garmin
26. Cradlepoint Cellular Internet

### 1. **1. Additional Equipment:**

1. Aft Deck Sun Awning
2. Bow Deck Cushions
3. Flybridge Clear Enclosure
4. 700 Gal/day Water-maker

---

## Basic Information

---

**Category:** Cruiser

**Sub Category:** Cruiser

**Model Year:** 2015

**Year Built:** 2014

**Country:** United States

---

## Dimensions

---

**LOA:** 52' (15.85mm)

**LWL:** 46' (14.02mm)

**LOD:** 52' (15.85mm)

**Beam:** 22

**Min Draft:** 4' 4" (1.32mm)

**Max Draft:** 4' 8" (1.42mm)

---

## Speed, Capacities and Weight

---

**Cruise Speed:** 18 Knots Kts. (21 MPH)

**Cruise Speed Range:** 400

**Max Speed:** 21 Knots Kts. (24 MPH)

**Max Speed Range:** 300 Kts.

**Gross Tonnage:** 32 Pounds

**Water Capacity:** 250 Gallons

**Holding Tank:** 60 Gal Gallons

**Fuel Capacity:** 800 Gal Gallons

**Fuel Consumption:** 36 Gal Gallons

---

## Accommodations

---

**Total Cabins:** 3

**Total Berths:** 3

**Sleeps:** 6

**Total Heads:** 2

---

## Hull and Deck Information

---

**Hull Material:** Advanced Composites

**Deck Material:** Composite Fiberglass

**Hull Configuration:** Catamaran

**Hull Color:** WHITE

**Hull Designer:** ANGELO LAVRANOS

**Interior Designer:** LEIGH FORD

---

## Engine Information

---

**Engines:** 2

**Manufacturer:** Cummins

**Engine Type:** Inboard

**Fuel Type:** Diesel

# PHOTOS

**At Anchor**



**Flybridge Deck**



**Aft Deck**



**Sunbeds on Foredeck**



**EXTERIOR**



**AFT DECK TV**



**AFT DECK 1**



**AFT DECK 2**



**AFT DECK 3**



**SALON LOOKING FWD 2**



**SALON LOOKING FWD**



**SALON 1**



**SALON LOOKING AFT**



**SALON 2**



**MASTER 1**



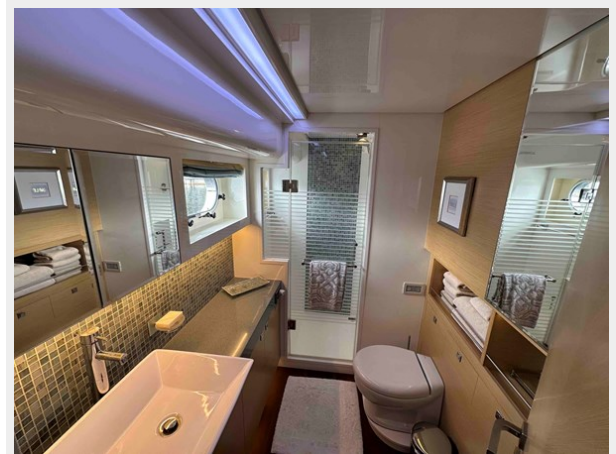
**MASTER 2**



**MASTER VANITY**



**MASTER BATH**



### VIP STATEROOM



### VIP BATHROOM



### TWIN CABIN



### WASHER AND SEPAERATE DRYER



### FLYBRIDGE 2



### FLYBRIDGE 1



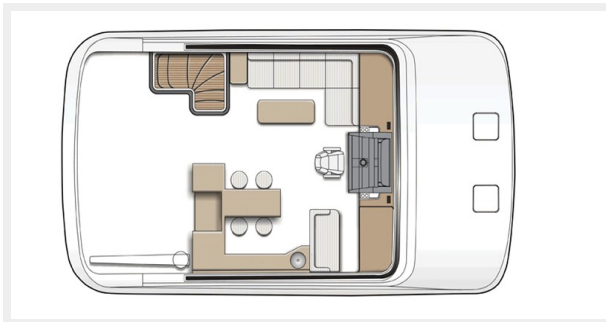
## TENDER & CRANE



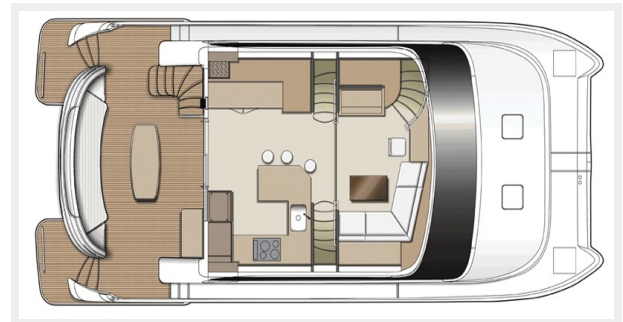
## Profile



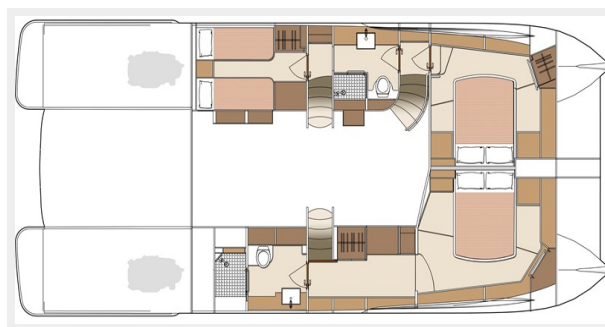
## Flybridge Layout



## Salon Layout



## Cabin Layout





---

# CONTACTS

---

Andrey Shestakov, leading yacht broker of the sales department of Shestakov Yacht Sales Inc. Shestakov Yacht Sales Inc., the official representative of the Miami/Fort Lauderdale FL headquarters.

---

## Contact details

---

Email: [andrey@shestakovyachtsales.com](mailto:andrey@shestakovyachtsales.com)

Web: [shestakovyachtsales.com/en/](http://shestakovyachtsales.com/en/)

---

## Telephones

---

USA: +1(954)274-4435

---

## Office hours

---

Monday – Saturday: **9:00 - 21:00** EDT

Sunday: **closed**

---

## Address

---



Harbour Towne Marina, 850 NE 3rd St,  
STE 213, Dania, FL 33004