

CUT AND RUN — HORIZON



Судостроитель: HORIZON

Год постройки: 2014

Модель: Крейсер

Цена: **ЦЕНА ЯХТЫ ПО ЗАПРОСУ**

Местонахождение: United States

Длина общая: 52' (15.85m)

Ширина: 22

Мин. осадка: 4' 4" (1.32m)

Макс. осадка: 4' 8" (1.42m)

Крейс. скорость: 18 Knots Kts. (21 MPH)

Макс. скорость: 21 Knots Kts. (24 MPH)

Купить **CUT AND RUN — HORIZON** а также выбрать подходящую вам яхту из нашего каталога яхт вам поможет опытный яхтенный брокер Андрей Шестаков. На сегодняшний день компания **Shestakov Yacht Sales Inc.** имеет большое количество яхт в собственном списке продаж, а также тесно сотрудничает со всеми крупными яхтенными производителями по всему миру.

Для того чтобы купить яхту **CUT AND RUN — HORIZON** а также проконсультироваться по любому вопросу связанному с покупкой, продажей, чартером яхт позвоните по телефону **+7(918)465-66-44**.

ОГЛАВЛЕНИЕ

ОГЛАВЛЕНИЕ	2
ХАРАКТЕРИСТИКИ	4
Обзор	4
Основная информация	10
Размеры	10
Скорость, вместимость и масса	10
Размещение	10
Корпус и палуба	11
Информация о двигателе	11
ФОТОГРАФИИ	12
At Anchor	12
Flybridge Deck	12
Aft Deck	12
Sunbeds on Foredeck	12
EXTERIOR	12
AFT DECK TV	12
AFT DECK 1	13
AFT DECK 2	13
AFT DECK 3	13
SALON LOOKING FWD 2	13
SALON LOOKING FWD	13
SALON 1	13
SALON LOOKING AFT	14
SALON 2	14
MASTER 1	14
MASTER 2	14
MASTER VANITY	14
MASTER BATH	14

VIP STATEROOM	15
VIP BATHROOM	15
TWIN CABIN	15
WASHER AND SEPAERATE DRYER	15
FLYBRIDGE 2	15
FLYBRIDGE 1	15
TENDER & CRANE	16
Profile	16
Flybridge Layout	16
Salon Layout	16
Cabin Layout	16
КОНТАКТЫ	17
Контактная информация	17
Телефоны	17
Время работы	17
Адрес	17

ХАРАКТЕРИСТИКИ

Обзор

A. Hull and Main Structure:

1. White Gelcoat finish for hull above water line, exterior deck, furniture and superstructure.
2. One-piece hull lamination and longitudinal girders
3. Hull is built with licensed process SCRIMP™ for improved strength and less weight
4. High density foam cored construction bottom and topsides
5. Solid fiberglass laminate stem, keel.
6. Main Engine girders with high density foam coring
7. Deck & superstructure foam cored reinforcement for rigidity
8. International anti-fouling bottom paint, w/ anti-osmosis treatment

B. Exterior Deck and Equipment:

1. Nonskid main deck (option: teak deck)
2. Teak covered aft deck & Steps (option).
3. Fiberglass cap rail.
4. S/S rub rail around hull deck joint.
5. Heavy-duty S/S #316 1-1/4" handrail w/1" (stanchions)
6. 10 Mooring cleats on deck.
7. Flag staff on back of flybridge.
8. Fuel and water inlets.
9. Locker for 24V anchor windlass.
10. 50KG DELTA anchor.
11. 150ft of high tensile 3/8" chain and 150ft warp.
12. Roller for anchor.

Doors, Hatches, Windows & Port Holes

13. SS sliding salon door.
14. Two bow storage lockers with access through flush FRP deck hatches.
15. 2 x Deck hatches with blinds & screens.
16. Engine access through manual deck hatches in cockpit floor with manual struts.
17. Two large hull side frameless window.
18. Six oval portholes.

Aft Deck Area

19. FRP Curved seat with cushions at aft. deck.
20. Teak cockpit table.
21. Comfortable stairs from aft deck to flybridge.
22. Two steps down to dive/swim platform.

23. Cockpit lockers for storage.
24. 2 side boarding doors
25. Second location bases for aft. deck table
26. S/S transom door with Horizon Logo
27. Dimmer switch for Aft. deck ceiling lighting

Swimming Platform Area

28. Built-in shower with hot/cold water.
29. Swim ladder on STBD side.
30. S/S safety rail on swim platform

Light

31. LED courtesy lights.
32. LED bulwark w/ flush mounted deck lights
33. LED ceiling lights
34. LED white light with 24VDC transformer on Horizon group logo in P&S.
35. Wiring for boat name on transom.
36. AQUA SIGNAL navigation lights.
37. Cockpit down lights.

C. Flybridge:

1. Non-skid flybridge cambered deck with ample drainage.
2. Helm station with stainless wheel and instrument console.
3. Single STIDD helm chair
4. FRP Arch & FRP Hardtop.
5. Wet bar package:
 - FRP module bar with sink, with hot and cold water.
 - DC fridge in bar.
6. FRP table with seating.
7. Sunning bed/ Bench Seat stb side of helm console with cushions
8. Ample locker space for storage.
9. ES1000 Steelhead Crane
10. Covers for F/B Seating and console
11. Covers for aft deck seating, aft deck table and flybridge Table

E. Engine Room and Equipments:

1. Sound and heat insulated compartments
2. Delta –T Moisture eliminators for engine rooms.
3. DC 24Volt lights.
4. One AC outlet.

F. Electrical system:

General

1. Color-coded wiring for easy identification.
2. Premium DC distribution board with switches, voltmeter and amp meter.
3. Outlets in Salon / bar / galley / cabins / fly-bridge / aft deck / engine room.
4. Vimar switches for lights and electrical outlets.

AC/DC Main Power System

5. AC power supply from generator / shore power.
6. Selector switch for AC power supply.
7. Remote panel for generator.
8. Four AGM Batteries for engine & generator start up.
9. Two AGM Batteries for ship's service power.
10. BEP battery switch.
11. One battery charger for all batteries.
12. One inverter 3.0 KW.
13. Premium AC panel with switches

Shore Power System

14. Glendenning shore power 50Amp connector with 100ft cord.

G. Mechanical system:

Fuel and Lube Oil System

1. Dual Racor 900FG filters for both engines.
2. One oil change pump for engines, generator and Gearboxes.

Fresh Water System

3. 270 Gal of water tank integral to hull.
4. Color coded piping for easy identification.
5. Marine grade lines for fresh water system
6. One 17 Gal/110V or 220V water heater.
7. High volume 24V fresh water pump with accumulator tank.
8. Fresh water washdown for anchor.
9. Fresh Water Washdown on Aft Deck.
10. 170 Gal extra fuel tank with extra fuel transfer pump and gauge

Sanitary System

11. 2 x 30 Gal of holding tank integral to hull
12. Electric fresh water flush toilets, pumps with Y valve for automatic discharge. and dock side

pump out (2).

Bilge Water System

13. 4x electric 24V bilge pumps.
14. High level bilge water alarm.

Fire Safety System

15. One Seafire automatic/manual fire extinguisher in each engine room.

Air Conditioning System

16. Marine Air –central air conditioning for each cabins and salon.
17. Air Cond. Self cleaning system
18. Hyd. Trim tab system

H. Interior Design and Equipment:

Interior Finish

1. HardWood flooring.
2. Tempered safety glass windows.
3. Soft furnishings including roman blinds and accent wood finishing.

Heads and Showers General

4. Wood floor.
5. Corian countertops.
6. Fabric blind over large window.
7. Portlights for ventilation.
8. Basin, cabinets and mirrors.
9. Walk-in separate shower.
10. Linen Cupboard inboard of the M/S shower.
11. Separate toilet.
12. Lights in Overhead.
13. Extractor fan.

Saloon

14. Salon seating covered in fabric.
15. Cabinet for Crystal Glasses.
16. 42" TV in Salon.
17. Two hatches with screen on top of salon roof

Galley/ Dinette

18. Wood floor.

19. Carporee Counter tops.
20. Sub Zero 700TCI with Icemaker
21. Double sinks with tap.
22. Custom accent wood carpentry.
23. Custom wooden carpentry for galley, cupboards and counters.
24. Cutlery & crockery drawers.
25. Pot drawer & spice drawers.
26. Additional storage drawers and cupboards.
27. Under counter trash drawer.
28. Fischer Paykel Dishwasher

VIP stateroom:

29. Queen bed, semi walk around.
30. Custom wood accent carpentry.
31. Carpeted floor
32. Deck hatch with screen & opening.
33. Fabric blind over large window.
34. Soft furnishings.
35. Night stands with light switches and outlets.

Port Aft guest stateroom:

36. Custom wood accent carpentry.
37. Carpeted floor.
38. Opening port lights in hull side.
39. Soft furnishings.
40. Twin Bunks with insert Queen size Bed
41. Storage beneath bed.
42. Cabin lights.
43. Shared bathroom with VIP cabin.

Master Stateroom

44. Custom carpentry for accent finishing.
45. Carpeted floor.
46. Deck hatch with screen & opening.
47. Fabric blinds over large window
48. Queen size bed, semi walk around.
49. Large full height closets.
50. Closets for linens / towels and clothes.
51. Cabin lights.
52. Night stands with light switches and outlets.

Galley

53. GE- 4 burner Elec. cook top.
54. Extractor over cooktop.
55. GE Microwave / Convection oven.
56. Sub Zero 700TCI refrigerator w/ freezer and Icemaker.

1. **Navigation & Instrumentation: & Audio Video Equipment:**

1. 2 x Garmin 8215 15" touch screen chart plotter with GPS antenna on Flybridge.
2. Garmin Auto pilot.
3. Garmin GMR 404 4ft open array 48 mile radar.
4. 2 x Garmin GSD 26 Depth transducers.
5. Additional GM120 display
6. Garmin VHF 300 on flybridge.
7. Garmin XM weather and Radio.
8. Sunshin Spotlight on Flybridge
9. Fusion UD750 Stereo on Flybridge
10. Sirius XM Module and Antenna
11. Fusion 51600 Amp
12. JL Audio Sub woofer & 4 x 7" JL Audio Speakers on Flybridge
13. Sonos Connect on Flybridge
14. Sonos Connect on Aft Deck with 2 x 7" JL Audio Speakers
15. Sonos Connect on Bow with 2 x 7" JL Audio Speakers
16. Sonos Playbar in Salon with 2 x Play 1 speakers and Sub woofer
17. Cisco Linksys router in Salon
18. Sonos Playbar in Master Cabin
19. 48" Samsung LED TV in Salon
20. 32" Samsung LED TV in Master
21. 32" Samsung LED TV in VIP
22. KVH HD7 Satellite TV with Dummy Dome
23. Apple TV in all Cabins
24. Bluray in Salon and Master
25. Sat TV displays on Flybridge Garmin
26. Cradlepoint Cellular Internet

1. **1. Additional Equipment:**

1. Aft Deck Sun Awning
2. Bow Deck Cushions
3. Flybridge Clear Enclosure
4. 700 Gal/day Water-maker

Основная информация

Тип судна: Крейсер

Подкатегория: Крейсер

Модельный год: 2015

Год постройки: 2014

Страна: United States

Размеры

Длина общая: 52' (15.85mm)

Длина по ватерлинии: 46' (14.02mm)

Длина палубы: 52' (15.85mm)

Ширина: 22

Мин. осадка: 4' 4" (1.32mm)

Макс. осадка: 4' 8" (1.42mm)

Скорость, вместимость и масса

Крейс. скорость: 18 Knots Kts. (21 MPH)

Дальность на крейсерской скорости:
400

Макс. скорость: 21 Knots Kts. (24 MPH)

Дальность на макс. скорости: 300 Kts.

Чистый вес: 32 Pounds

Вместимость воды: 250 Gallons

Вместимость сточного бака: 60 Gal
Gallons

Объем топливного бака: 800 Gal
Gallons

Расход топлива: 36 Gal
Gallons

Размещение

Всего кают: 3

Всего коек: 3

Спальные места: 6

Всего ком. состава: 2

Корпус и палуба

Материал корпуса: Advanced Composites **Материал палубы:** Composite Fiberglass

Комплектация корпуса: Катамаран **Цвет корпуса:** WHITE

Дизайнер корпуса: ANGELO LAVRANOS **Дизайнер интерьера:** LEIGH FORD

Информация о двигателе

Двигатели: 2

Производитель: Cummins

Тип двигателя: Inboard

Тип топлива: Diesel

ФОТОГРАФИИ

At Anchor



Flybridge Deck



Aft Deck



Sunbeds on Foredeck



EXTERIOR



AFT DECK TV



AFT DECK 1



AFT DECK 2



AFT DECK 3



SALON LOOKING FWD 2



SALON LOOKING FWD



SALON 1



SALON LOOKING AFT



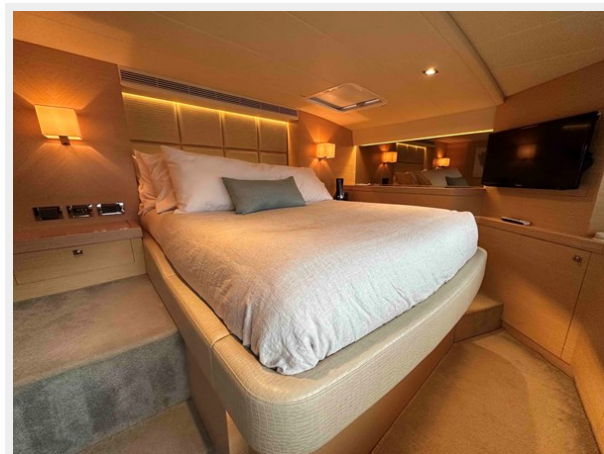
SALON 2



MASTER 1



MASTER 2



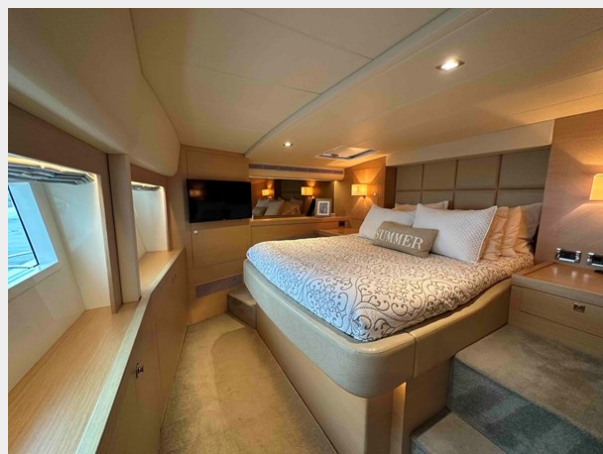
MASTER VANITY



MASTER BATH



VIP STATEROOM



VIP BATHROOM



TWIN CABIN



WASHER AND SEPAERATE DRYER



FLYBRIDGE 2



FLYBRIDGE 1



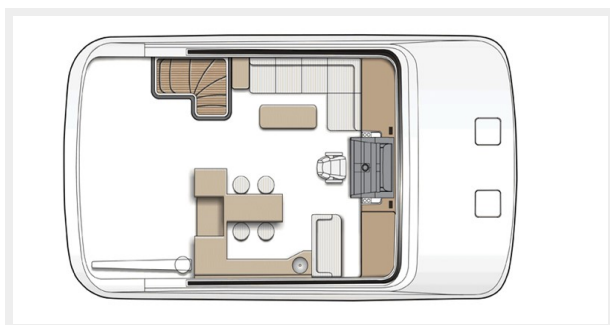
TENDER & CRANE



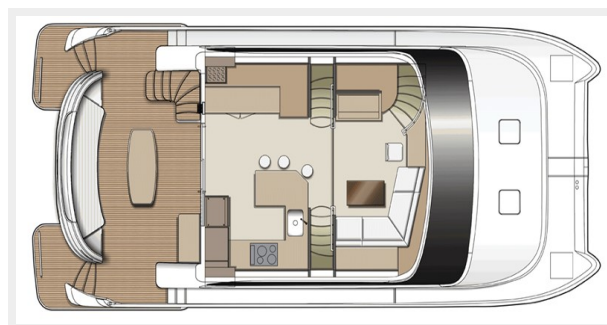
Profile



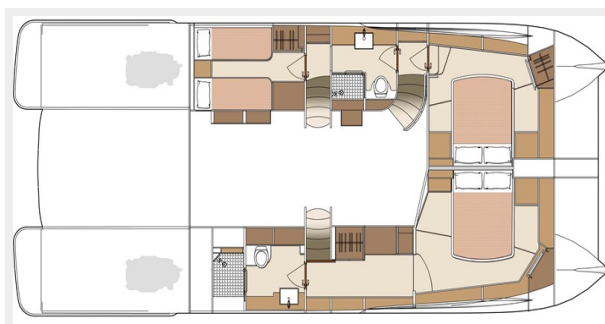
Flybridge Layout



Salon Layout



Cabin Layout



КОНТАКТЫ

Андрей Шестаков (Andrey Shestakov) – ведущий яхтенный брокер отдела продаж яхт и судов компании Shestakov Yacht Sales Inc. Официальный представитель Shestakov Yacht Sales Inc. для русскоговорящих клиентов в центральном офисе компании в Майами/Форт Лодердейл/Флорида/США.

Контактная информация

Email: andrey@shestakovyachtsales.com

Web: shestakovyachtsales.com

Телефоны

Краснодарский край: **+7(918)465-66-44**

США, Майами, Флорида: **+1(954)274-4435**

Время работы

Понедельник – Суббота: **9:00 - 21:00**
EDT

Воскресенье: **Закрито**

Адрес



Harbour Towne Marina, 850 NE 3rd St,
STE 213, Dania, FL 33004