

## KING OF HEARTS — AZIMUT



**Судостроитель:** [AZIMUT](#)

**Год постройки:** 2001

**Модель:** Моторная яхта

**Цена:** ЦЕНА ЯХТЫ ПО ЗАПРОСУ

**Местонахождение:** United States

**Длина общая:** 70' 0" (21.34m)

**Ширина:** 18' 3" (5.56m)

**Макс. осадка:** 5' 6" (1.68m)

Купить **King of Hearts — AZIMUT** а также выбрать подходящую вам яхту из нашего каталога яхт вам поможет опытный яхтенный брокер Андрей Шестаков. На сегодняшний день компания **Shestakov Yacht Sales Inc.** имеет большое количество яхт в собственном списке продаж, а также тесно сотрудничает со всеми крупными яхтенными производителями по всему миру.

Для того чтобы купить яхту **King of Hearts — AZIMUT** а также проконсультироваться по любому вопросу связанному с покупкой, продажей, чартером яхт позвоните по телефону **+7(918)465-66-44**.

# ОГЛАВЛЕНИЕ

ОГЛАВЛЕНИЕ	2
ХАРАКТЕРИСТИКИ	3
Обзор	3
Основная информация	10
Размеры	10
Размещение	10
Корпус и палуба	10
Информация о двигателе	10
ПОДРОБНОЕ ОПИСАНИЕ	11
Manufacturer's Description	11
General Specifications	15
Engine/Mechanical	15
Electrical Equipment	16
Lower Helm Station	16
Fly Bridge	16
Aft Deck	17
Foredeck	17
Deck Facilities	17
Исключения	17
Отказ от ответственности	18
ФОТОГРАФИИ	19
КОНТАКТЫ	25
Контактная информация	25
Телефоны	25
Время работы	25
Адрес	25

# ХАРАКТЕРИСТИКИ

## Обзор

**Specs** Designer: Stephano Righini Hull Shape: Deep Vee **Dimensions** LOA: 69 ft 11 in Beam: 18 ft 3 in Maximum Draft: 5 ft 6 in Deadrise: 14 ° at Transom Dry Weight: 105600 lbs **Engines** Total Power: 2300 HP Engine 1: Engine Brand: MTU 12V 183 TE 93 Year Built: 2000 Engine Model: MTU 12V 183 TE 93 Engine Type: Inboard Engine/Fuel Type: Diesel Engine Power: 1150 HP Engine 2: Engine Brand: MTU 12V 183 TE 93 Year Built: 2000 Engine Model: MTU 12V 183 TE 93 Engine Type: Inboard Engine/Fuel Type: Diesel Engine Power: 1150 HP **Tanks** Fresh Water Tanks: (397 Gallons) Fuel Tanks: (1190 Gallons) **Accommodations** Number of single berths: 9 Number of heads: 3

**Manufacturer Provided Description** The Azimut 70 Sea-Jet always has more room for unexpected guests. Just expand the table with the ingenious add-border. Gracious curves and elegant furnishing create an inviting ambiance. Elegance meets functionality in the 70 Sea-Jet: the TV and stereo cabinet with a sliding panel converts to the open galley. The owner's stateroom is spacious and tasteful, with the added plus of a full-height walk-in closet. A queen-sized berth, vanity and sofa are included in the VIP guest stateroom.

## Spec

The very spacious Aft Deck gives access to the Salon via stainless steel and glass sliding doors. The Salon features two curved sofas, high gloss cherry joinery and a semi-open Galley to starboard. A large dining settee is to port, opposite the full Lower Helm area.

The lower deck starts forward with a crew cabin for two (deck access only), then the spacious VIP Stateroom with en suite Head with stall shower. Next aft are two guest cabins to port and starboard. To port, three twin berths with an en suite Head with stall shower. To starboard two berths also with an en suite Head with stall shower. Next aft but accessed only from a private stairway located in the aft end of the Salon is the full-beam Master Stateroom with en suite Head with double sinks and stall shower.

Engine Room is accessed from the port side deck. Jet Sky garage is located in the stern off the swim platform.

## Salon

Entering from the dual stainless steel and glass sliding doors on centerline is a spacious and flowing interior of soft curves, high gloss cherry joinery and large windows. Immediately to port is a Dry Bar with icemaker and glassware/bottle storage. Above is a burlled countertop and three Lucite shelves between fluted cherry columns. A curved leather sofa with storage below is next forward. Outboard of the sofa are Roman shades and upholstered panels. In front of the sofa is a high gloss cherry and glass coffee table in a stylish half circle shape.

To starboard starting aft is a curved stairway leading to the private Master Stateroom. Forward of

this staircase is a curved leather sofa with storage below. Window treatments match the port side. Next forward is the Salon's entertainment center with a New Samsung FlatScreen TV and Fusion Stereo. Opposite is the curved seven step open tread access to the Flybridge with two more pull-out storage cabinets for glasses and dishes below.

Also in the Salon is a tray-type ceiling with rope lighting behind and an inset cherry burl area. In addition, there is rope lighting under the sofas plus nine (9) dimmable halogen mini spotlights above.

## Galley

The Galley is to starboard and forward of the Salon, open to the Salon via a tambour sliding cherry panel. Equipment in the Galley is as follows:

GE Profile 4-burner cooktop Exhaust fan with work light over cooktop GE Profile Performance dishwasher GE Profile microwave/convection oven GE trash compactor Stainless Liebherr 2 door Refrigerator and Freezer Marble countertops including area on pass through Double stainless steel sinks Pantograph access door to starboard sidedeck Pocket door & sliding countertop partition to completely close off Galley (8) Overhead Halon mini-spotlights Garbage disposal

## Dining

The Dining area is opposite the Galley to port and Lower Helm Area is to starboard and is open to the Salon aft. The sole is stone. The large settee has upholstered seating with storage below and seats six comfortably. The dining table has a removable center section. Both the fore and aft sections of the table open for storage. Forward is a lift-out storage caddy for dishes, etc. Aft is a dish, glass and flatware carousel that lifts out of the area behind the settee with the push of a button. Windows are covered with sheer Roman shades to match those of the Salon.

## Guest Companionway

Forward between the Lower Helm and the Dining Area are seven carpeted steps to the forward accommodation area. A Lucite handrail and step lights lead the way to the VIP Stateroom which is forward. Down two more steps is the landing with the Guest Head, two Guest Staterooms and the full size washer and dryer are hidden behind cherry cabinetry.

## Master SR

Accessed via a private stairway from the aft Salon the Master Stateroom is quiet and separate from the other guest cabins. Nine steps with Lucite handles and a storage locker are passed before entering through the high gloss cherry Master Stateroom door. Upon entry, there is a king-size berth off the forward bulkhead with four large storage drawers and rope lighting below. An upholstered headboard sits on the multi-panel beveled mirror bulkhead.

Built-in nightstands with burlwood tops are to both port and starboard; there is one storage drawer below and a four-shelf fiddled bookcase above. Cool air delivery comes from the top of

the bookcase so as not to blow directly on the berth. Twin sconce lights are over each nightstand.

Overhead is a tray-type inset oval with cherry burlwood trim, rope lighting and an inset lacquered panel. To starboard is a two-person upholstered settee followed by a large full-length hanging locker with auto light. To port starting forward is a hinged top burlwood vanity with an upholstered stool flanked by two drawers and two storage cabinets.

Next aft is a full-size hanging locker with a dressing mirror, a double door storage locker, and double doors that retract to store the TV above four cherry storage drawers. On the aft bulkhead is access to the en suite Master Head.

Also in this cabin are digital AC controls, two stainless steel port lights with Roman shades, Sony AM/FM/CD player and Sony speakers. Eight halogen mini spotlights provide additional lighting. Rope lighting behind the bookcase provides a soft nightlight

### Master Head

The private Master Head is located just aft of the Master and has a Crema Marafil marble sole, Vacuflush head and a large vanity. The vanity has six storage doors below the Crema Marafil marble top (to match the sole), two under mount china sinks with two-tone faucets and fixtures. Above is a large beveled mirror with two wing mirrored cabinets that open as medicine cabinets. The stall shower is to port with a bifold tempered glass door. The Head also includes five overhead mini spotlights and an exhaust fan.

### VIP SR

Entering the VIP Guest Stateroom, there is a queen-size berth forward on centerline with four drawers and rope lighting beneath the berth. The upholstered headboard sits on a multi-panel beveled mirror with hidden rope accent lighting on the borders. Both port and starboard are twin nightstands each with one drawer. Twin brass and frosted glass sconces are above the nightstands. Outboard of each nightstand is a full height hanging locker with auto light.

Aft to starboard is a two-person upholstered settee with four storage cabinets, an opening stainless steel porthole, Roman shades and a Sony stereo speaker above.

Access to the private VIP Head is located aft. On the port side is a hinged top burlwood vanity with fold-up mirror and an upholstered stool accompanied by two drawers and two storage cabinets. Above are four cabinet doors, an opening stainless steel porthole, Roman shades and a Sony stereo speaker. There is a Sony TV and VCR in this stateroom.

Also in this cabin are eight overhead halogen mini spotlights (two as reading lights), a burlwood oval with inset lacquered wood panel and rope lights overhead and digital AC controls.

### VIP Head

The private VIP Head is accessed only from the VIP Stateroom. The sole is Crema Marafil

marble, the toilet is a Vacuflush model. The vanity has two storage cabinet doors below and an under mount china sink with two-tone fixtures on a Creama Marafil marble countertop. An angled mirror above the sink, two additional cabinets to starboard and an opening stainless steel porthole above. The stall shower has a curved sliding clear enclosure, a fold-out seat, four body sprays and a hand-held or wall mountable fixture. Also in this area are four overhead mini spotlights and an exhaust fan.

#### Guest Stateroom – Port

Entering from the forward end are twin lower side-by-side berths each with two drawers facing the center walkway and rope lighting below. Between the berths is a bulwood top nightstand with one drawer below and a brass and glass sconce above. Above the inboard berth is a Pullman-style third bunk. Upholstered headboards sit on beveled mirror panels. Above the outboard berth is an opening stainless steel porthole behind Roman shades. At the foot of the outboard berth is a Samsung Flat screen TV and a Full-size hanging locker with auto light and dressing mirror. Above are six (6) overhead halogen mini spotlights and a burlwood trim panel.

#### Guest Head – Port

Located to port just forward of the Port Guest Cabin, the Port Guest Head has two entrances. One is from the main companionway allowing it to serve as a Day Head and the other is from the Port Guest Cabin. The sole is Creama Marafil marble, the toilet is a Vacuflush model. The vanity has two storage cabinet doors below and an under mount china sink with two-tone fixtures on a Creama Marafil countertop. An angled mirror is above the sink and two additional cabinets with an opening stainless steel porthole and Roman shades. The stall shower has a curved sliding clear enclosure, a fold-out seat, four body sprays and a hand-held or wall mountable fixture. Also in this area are four overhead mini spotlights and an exhaust fan.

#### Guest SR – Starboard

Entering from the forward end there are two over/under berths on the outboard side. The upper berth has a fold-up function. There are two storage drawers below the lower berth as well as rope lighting and a nightstand with drawer and burlwood top. A glass and brass sconce is above the nightstand. At the forward end of the cabin is a hanging locker with auto light and a washer/dryer (washer behind a hide-away door in companionway & dryer behind a hide-away door in stateroom). Also in this cabin is an opening stainless steel porthole with Roman shades above the upper berth, beveled mirrors on the aft bulkhead, a bookcase, five (5) overhead halogen mini spotlights and access to the private Head.

#### Guest Head – Starboard

Accessed only from the Starboard Guest Stateroom is a private Head with a sole of Creama Marafil marble and Vacuflush toilet. The vanity has two storage cabinet doors below and an under mount china sink with two-tone fixtures on a Creama Marafil countertop. Above is a mirrored medicine cabinet door. The stall shower has a bi-fold clear enclosure, a fold-out seat, four body sprays and a hand-held or wall mountable fixture. Also in this area are three (3)

overhead mini spotlights and an exhaust fan.

### Crew Quarters

The Crew Cabin is accessed only from the foredeck by a six step removable stainless ladder. There is a "V" berth configuration that sleeps two. Outboard of each berth are two cabinets and two shelves. In between the berths forward in a hanging locker is the central Vacuum system. Below the port berth is a storage drawer. In between the berths aft is a private head with a Vacuflush toilet, hand-held or wall mountable shower, vanity with sink above and a two door storage cabinet below. Above are two mirrored medicine cabinet doors. Also in this area is an air conditioning control, six (6) overhead halogen lights and an exhaust fan for the Head.

### Basic Information

Builder: AZIMUT Category: Motor Yacht Model: Azimut 70 Year Built: 2000

Flag: USA Current location: Ft. Lauderdale

Max Speed: 30 Knots

Cruise Speed: 24.5 Knots Cruise Speed Range: 275 Miles Max Speed RPM:

Displacement: 45.2 T Water Capacity: 1,500 liters – 400 Gal Fuel Capacity: 5,670 liters – 1,500 Gal Fuel consumption 400 l/h – 100 Gal

### Accommodations

Total Cabins: 4 (2x double, 2x Twin) Total Berths: 6 Sleeps: 9

Crew Cabin: 1 Crew Sleeps: 2

### Hull and Deck Information

Hull Material: GRP Deck Material: Teak Hull Color: White

Hull Designer: Azimut / Righini design Interior Designer: Carlo Galeazzi

### Engine Information

Manufacturer: MTU Model: 12V183TE93

Engine Count: Twin Fuel Type: Diesel

Engine Type: Inboard Transmission: V-drive

Power Hours Date registered Port Engine 1150 HP 3365 hrs on 3/25/19 Stbd Engine 1150 HP 3062 hrs on 3/25/19 Generator 1: Kohler 23 kW 5545 hrs on 3/25/19 Generators 2-3: Kohler 23 kW 5095 hrs on 3/25/19

## Lower Helm Station

To starboard and opposite the Dining Area is a fully functional Lower Helm station.

Raymarine 9a MFD Chartplotter / GPS 3 Raymarine i70 MDF's w/ Autopilot VHF Radio Bow Thruster Control Full MTU gauges Micro Commander controls Trim tab controls w/indicator Wiper controls Windlass controls Start/stop switches & keys Remote spotlight controls Horn Main AC/DC panel, on aft bulkhead of Lower Helm Area

## Flybridge

Full Bimini Top w/ removable Center Fly Double helm seat 220V Flybridge electric grill w/polished stainless steel heat shield Glass & stainless hatch to Salon Fiberglass radar arch w/(2) down lights 3 Person sun lounge w/storage below Expandable, adjustable height (Hi-Lo) table (with insert to convert to very large dining table) Curved seating aft w/storage below cushions Flybridge drink cooler w/remote mounted compressor Flybridge sink Helm and Seating covers (1) Life rings (2) KVH matching domes on arch wings Storage cabinet Flybridge stereo Deck lighting Flybridge deck drains

## Flybridge Helm Station

Garmin 5208 Chartplotter / GPS / Radar 3 Raymarine i70 MFD's w/ AutoPilot Bow Thruster Control VHF Radio Trim tab controls w/indicator Full MTU engine gauges Micro commander controls Remote spotlight controls Azimut varnished wood wheel Fusion Stereo Control Horn

## Deck Equipment

Stern warping winches Port or starboard bulwarks doors located both forward and aft Full walkaround, Windlass with washdown

## Foredeck

The Foredeck features a large sun pad, access to the crew cabin and chain locker

Lofrans vertical windlass w/wildcat & capstan Wired remote windlass controls Bow cushions Deck hatch access to Crew Cabin Navy style anchor w/all chain rode (6) Deck lights Flat oval Stainless steel handrails (2) Side access storage lockers International navigation lights Port & starboard flush mount boat hooks (3) Port & (3) Starboard overhead deck lights Starboard side water fill behind hinged door Pantograph Galley door (2) Anchor locker hatches Port side Pantograph Engine Room access door Stainless steel bow pennant (2) Port & Starboard built-in deck box storage areas in after portion of forward cabin top

## Aft Deck

Teak sole Hinged fiberglass boarding gates port & starboard Transom walk-up steps to aft deck both port & starboard (2) Stainless & plexiglass gates to swim platform (2) Lofrans chrome docking capstans on Aft Deck w/foot switches Benchseat aft w/removable cushions Teak dining



table on double pedestal Port & Starboard Azimut factory fiberglass top loading refrigerators/freezers w/remote compressors (11) Overhead recessed deck lights Retrieval winch & roller system for Jet Ski Hydraulic tender garage door Fiberglass integral swim platform w/non-skid decking Hidden remote control swim ladder Hot & cold shower on transom Swim ladder & garage hydraulic control switches Freshwater washdown Flat oval stainless steel rail over fiberglass bulwarks Lazarette access from portside steps

## Engine / Mechanical

Twin MTU 12V183TE93 engines at 1150hp each & Two (2) Generators;

ZF BW 165 V Drive transmissions 1.97 to 1 ratio Mathers Micro Commander controls 3" Stainless steel prop shafts (3) Auto manual bilge pumps G & R 80-liter water heater 24V fuel transfer pump 24V bilge pump w/manifold 24V fire pump 50 Gallon aluminum grey water tank High water bilge alarm system DC incandescent Engine Room lighting AC fluorescent Engine Room lighting Dual Racor 1000 fuel filters for main engines Remote compressor for Aft Deck & Flybridge drink cooler Electric fuel pump w/auto/manual settings for day tank 220V freshwater pumps w/expansion tank Hydraulic power pack for gauge door & swim ladder Six point oil change pump w/manifold (2) 220V Engine Room blowers Site gauge on aft starboard fuel tank Hydraulic power pack for trim tabs Hydraulic pump & motor for power steering Manual Engine Room bilge pump w/two position manifold 220V Engine Room bilge pump w/six position manifold (2) Racor 500 fuel filter for generators Start /Stop switches in Engine Room Seven Step stainless steel ladder from port side deck to Engine Room (4) Cruiseair AC compressors Auto air dampers for fire on 220V circulation fans/blowers 800 GPH Sea Recovery Watermaker

## Electrical

12V/24V DC electrical system 110V/220V 60Hz AC electrical system (2) a Lower and Upper Kholer 23 kW genset in soundshield Mastervolt MASS 24 volt 100 amp battery charger (2) 8D 12 volt batteries for 24 volt engine starting (2) 12 batteries for 12 volt generator starting (8) 8D 12 volt batteries for 24 volt house system Bonding system Newmar 24 to 12 volt converter for navigation electronics Hubbell telephone/TV outlets at transom (2) 50-amp 220V Cable Master units inlets aft (2) 50-amp 220V inlets Starboard side froward Pilothouse electrical panel by Cantalupi 21 Breaker protected 24V DC circuits (Pilothouse) 13 Breaker protected 220V AC circuits (Pilothouse) 8 Breaker protected 110V AC circuits (Pilothouse) Navigation light switches w/indicator diagram (Pilothouse) Bilge/grey/black water pump switches w/indicator diagram (Pilothouse) Navigation light switches w/indicator diagram (Pilothouse) Bilge/grey/black water pump switches w/indicator diagram (Pilothouse) Navigation light switches w/indicator diagram (Pilothouse) 24V volt meter (Engine Room) 24V amp meter (Engine Room) (2) Generator volt meter (Engine Room) (2) Shorepower volt meters (Engine Room) (2) Shorepower amp meters (Engine Room) Generator start/stop switches (Engine Room) Guest battery isolation transformer Main Engine Room panel Hz meter Main Engine Room panel volt meter 20 Breaker protected 220V circuits at Engine Room panel 32 Breaker protected 24V circuits at Engine Room panel Shore power indicator lights at Engine Room panel Generator power indicator lights at Engine Room panel

## Основная информация

Тип судна: Моторная яхта

Модельный год: 2001

Год постройки: 2001

Страна: United States

Открытая палуба мостика: Да

## Размеры

Длина общая: 70' 0" (21.34m)

Ширина: 18' 3" (5.56m)

Макс. осадка: 5' 6" (1.68m)

## Размещение

Всего кают: 4

Всего коек: 6

Спальные места: 8

Всего ком. состава: 4

Каюты экипажа: 1

Спальных мест экипажа: 2

Комм. состав экипажа: 1

## Корпус и палуба

Материал корпуса: Fiberglass

## Информация о двигателе

Двигатели: 2

Производитель: MTU

Модель: MTU 12V 183 TE 93

Тип двигателя: Inboard

---

# ПОДРОБНОЕ ОПИСАНИЕ

---

## Manufacturer's Description

---

The Azimut 70 Sea-Jet always has more room for unexpected guests. Just expand the table with the ingenious add-border. Gracious curves and elegant furnishing create an inviting ambiance. Elegance meets functionality in the 70 Sea-Jet: the TV and stereo cabinet with a sliding panel converts to the open galley. The owner's stateroom is spacious and tasteful, with the added plus of a full-height walk-in closet. A queen-sized berth, vanity and sofa are included in the VIP guest stateroom.

The very spacious Aft Deck gives access to the Salon via stainless steel and glass sliding doors. The Salon features two curved sofas, high gloss cherry joinery and a semi-open Galley to starboard. A large dining settee is to port, opposite the full Lower Helm area.

The lower deck starts forward with a crew cabin for two (deck access only), then the spacious VIP Stateroom with en suite Head with stall shower. Next aft are two guest cabins to port and starboard. To port, three twin berths with an en suite Head with stall shower. To starboard two berths also with an en suite Head with stall shower. Next aft but accessed only from a private stairway located in the aft end of the Salon is the full-beam Master Stateroom with en suite Head with double sinks and stall shower.

Engine Room is accessed from the port side deck. Jet Sky garage is located in the stern off the swim platform.

### Salon

Entering from the dual stainless steel and glass sliding doors on centerline is a spacious and flowing interior of soft curves, high gloss cherry joinery and large windows. Immediately to port is a Dry Bar with icemaker and glassware/bottle storage. Above is a burlled countertop and three Lucite shelves between fluted cherry columns. A curved leather sofa with storage below is next forward. Outboard of the sofa are Roman shades and upholstered panels. In front of the sofa is a high gloss cherry and glass coffee table in a stylish half circle shape.

To starboard starting aft is a curved stairway leading to the private Master Stateroom. Forward of this staircase is a curved leather sofa with storage below. Window treatments match the port side. Next forward is the Salon's entertainment center with a New Samsung FlatScreen TV and Fusion Stereo. Opposite is the curved seven step open tread access to the Flybridge with two more pull-out storage cabinets for glasses and dishes below.

Also in the Salon is a tray-type ceiling with rope lighting behind and an inset cherry burl area. In addition, there is rope lighting under the sofas plus nine (9) dimmable halogen mini spotlights above.

### Galley

The Galley is to starboard and forward of the Salon, open to the Salon via a tambour sliding cherry panel. Equipment in the Galley is as follows:

GE Profile 4-burner cooktop Exhaust fan with work light over cooktop GE Profile Performance dishwasher GE Profile microwave/convection oven GE trash compactor Stainless Liebherr 2 door Refrigerator and Freezer Marble countertops including area on pass through Double stainless steel sinks Pantograph access door to starboard sidedeck Pocket door & sliding countertop partition to completely close off Galley (8) Overhead Halon mini-spotlights Garbage disposal

## Dining

The Dining area is opposite the Galley to port and Lower Helm Area is to starboard and is open to the Salon aft. The sole is stone. The large settee has upholstered seating with storage below and seats six comfortably. The dining table has a removable center section. Both the fore and aft sections of the table open for storage. Forward is a lift-out storage caddy for dishes, etc. Aft is a dish, glass and flatware carousel that lifts out of the area behind the settee with the push of a button. Windows are covered with sheer Roman shades to match those of the Salon.

## Guest Companionway

Forward between the Lower Helm and the Dining Area are seven carpeted steps to the forward accommodation area. A Lucite handrail and step lights lead the way to the VIP Stateroom which is forward. Down two more steps is the landing with the Guest Head, two Guest Staterooms and the full size washer and dryer are hidden behind cherry cabinetry.

## Master SR

Accessed via a private stairway from the aft Salon the Master Stateroom is quiet and separate from the other guest cabins. Nine steps with Lucite handles and a storage locker are passed before entering through the high gloss cherry Master Stateroom door. Upon entry, there is a king-size berth off the forward bulkhead with four large storage drawers and rope lighting below. An upholstered headboard sits on the multi-panel beveled mirror bulkhead.

Built-in nightstands with burlwood tops are to both port and starboard; there is one storage drawer below and a four-shelf fiddled bookcase above. Cool air delivery comes from the top of the bookcase so as not to blow directly on the berth. Twin sconce lights are over each nightstand.

Overhead is a tray-type inset oval with cherry burlwood trim, rope lighting and an inset lacquered panel. To starboard is a two-person upholstered settee followed by a large full-length hanging locker with auto light. To port starting forward is a hinged top burlwood vanity with an upholstered stool flanked by two drawers and two storage cabinets.

Next aft is a full-size hanging locker with a dressing mirror, a double door storage locker, and double doors that retract to store the TV above four cherry storage drawers. On the aft bulkhead is access to the en suite Master Head.

Also in this cabin are digital AC controls, two stainless steel port lights with Roman shades, Sony AM/FM/CD player and Sony speakers. Eight halogen mini spotlights provide additional lighting. Rope lighting behind the bookcase provides a soft nightlight

### Master Head

The private Master Head is located just aft of the Master and has a Creama Marafil marble sole, Vacuflush head and a large vanity. The vanity has six storage doors below the Creama Marafil marble top (to match the sole), two under mount china sinks with two-tone faucets and fixtures. Above is a large beveled mirror with two wing mirrored cabinets that open as medicine cabinets. The stall shower is to port with a bifold tempered glass door. The Head also includes five overhead mini spotlights and an exhaust fan.

### VIP SR

Entering the VIP Guest Stateroom, there is a queen-size berth forward on centerline with four drawers and rope lighting beneath the berth. The upholstered headboard sits on a multi-panel beveled mirror with hidden rope accent lighting on the borders. Both port and starboard are twin nightstands each with one drawer. Twin brass and frosted glass sconces are above the nightstands. Outboard of each nightstand is a full height hanging locker with auto light.

Aft to starboard is a two-person upholstered settee with four storage cabinets, an opening stainless steel porthole, Roman shades and a Sony stereo speaker above.

Access to the private VIP Head is located aft. On the port side is a hinged top burlwood vanity with fold-up mirror and an upholstered stool accompanied by two drawers and two storage cabinets. Above are four cabinet doors, an opening stainless steel porthole, Roman shades and a Sony stereo speaker. There is a Sony TV and VCR in this stateroom.

Also in this cabin are eight overhead halogen mini spotlights (two as reading lights), a burlwood oval with inset lacquered wood panel and rope lights overhead and digital AC controls.

### VIP Head

The private VIP Head is accessed only from the VIP Stateroom. The sole is Creama Marafil marble, the toilet is a Vacuflush model. The vanity has two storage cabinet doors below and an under mount china sink with two-tone fixtures on a Creama Marafil marble countertop. An angled mirror above the sink, two additional cabinets to starboard and an opening stainless steel porthole above. The stall shower has a curved sliding clear enclosure, a fold-out seat, four body sprays and a hand-held or wall mountable fixture. Also in this area are four overhead mini spotlights and an exhaust fan.

### Guest Stateroom – Port

Entering from the forward end are twin lower side-by-side berths each with two drawers facing the center walkway and rope lighting below. Between the berths is a burlwood top nightstand with one drawer below and a brass and glass sconce above. Above the inboard berth is a Pullman-

style third bunk. Upholstered headboards sit on beveled mirror panels. Above the outboard berth is an opening stainless steel porthole behind Roman shades. At the foot of the outboard berth is a Samsung Flat screen TV and a Full-size hanging locker with auto light and dressing mirror. Above are six (6) overhead halogen mini spotlights and a burlwood trim panel.

#### Guest Head – Port

Located to port just forward of the Port Guest Cabin, the Port Guest Head has two entrances. One is from the main companionway allowing it to serve as a Day Head and the other is from the Port Guest Cabin. The sole is Creama Marafil marble, the toilet is a Vacuflush model. The vanity has two storage cabinet doors below and an under mount china sink with two-tone fixtures on a Creama Marafil countertop. An angled mirror is above the sink and two additional cabinets with an opening stainless steel porthole and Roman shades. The stall shower has a curved sliding clear enclosure, a fold-out seat, four body sprays and a hand-held or wall mountable fixture. Also in this area are four overhead mini spotlights and an exhaust fan.

#### Guest SR – Starboard

Entering from the forward end there are two over/under berths on the outboard side. The upper berth has a fold-up function. There are two storage drawers below the lower berth as well as rope lighting and a nightstand with drawer and burlwood top. A glass and brass sconce is above the nightstand. At the forward end of the cabin is a hanging locker with auto light and a washer/dryer (washer behind a hide-away door in companionway & dryer behind a hide-away door in stateroom). Also in this cabin is an opening stainless steel porthole with Roman shades above the upper berth, beveled mirrors on the aft bulkhead, a bookcase, five (5) overhead halogen mini spotlights and access to the private Head.

#### Guest Head – Starboard

Accessed only from the Starboard Guest Stateroom is a private Head with a sole of Creama Marafil marble and Vacuflush toilet. The vanity has two storage cabinet doors below and an under mount china sink with two-tone fixtures on a Creama Marafil countertop. Above is a mirrored medicine cabinet door. The stall shower has a bi-fold clear enclosure, a fold-out seat, four body sprays and a hand-held or wall mountable fixture. Also in this area are three (3) overhead mini spotlights and an exhaust fan.

#### Crew Quarters

The Crew Cabin is accessed only from the foredeck by a six step removable stainless ladder. There is a “V” berth configuration that sleeps two. Outboard of each berth are two cabinets and two shelves. In between the berths forward in a hanging locker is the central Vacuum system. Below the port berth is a storage drawer. In between the berths aft is a private head with a Vacuflush toilet, hand-held or wall mountable shower, vanity with sink above and a two door storage cabinet below. Above are two mirrored medicine cabinet doors. Also in this area is an air conditioning control, six (6) overhead halogen lights and an exhaust fan for the Head.

---

## General Specifications

---

Designer: Stephano Righini Hull Shape: Deep Vee

Hull Material: GRP Deck Material: Teak Hull Color: White

**Dimensions** LOA: 69 ft 11 in Beam: 18 ft 3 in Maximum Draft: 5 ft 6 in Deadrise: 14 ° at Transom  
Dry Weight: 105600 lbs

Max Speed: 30 Knots

Cruise Speed: 24.5 Knots Cruise Speed Range: 275 Miles Max Speed RPM:

Displacement: 45.2 T Water Capacity: 1,500 liters – 400 Gal Fuel Capacity: 5,670 liters – 1,500 Gal  
Fuel consumption 400 l/h – 100 Gal

Accommodations

Total Cabins: 4 (2x double, 2x Twin) Total Berths: 6 Sleeps: 9

Crew Cabin: 1 Crew Sleeps: 2

---

## Engine/Mechanical

---

Twin MTU 12V183TE93 engines at 1150hp each & Two (2) Generators;

Engine Count: Twin Fuel Type: Diesel

Engine Type: Inboard Transmission: V-drive

Power Hours Date registered

Port Engine 1150 HP 3365 hrs on 3/25/19 Stbd Engine 1150 HP 3062 hrs on 3/25/19 Generator  
1: Kohler 23 kW 5545 hrs on 3/25/19 Generators 2-3: Kohler 23 kW 5095 hrs on 3/25/19

ZF BW 165 V Drive transmissions 1.97 to 1 ratio

Mathers Micro Commander controls 3" Stainless steel prop shafts (3) Auto manual bilge pumps  
G & R 80-liter water heater 24V fuel transfer pump 24V bilge pump w/manifold 24V fire pump 50  
Gallon aluminum grey water tank High water bilge alarm system DC incandescent Engine Room  
lighting AC fluorescent Engine Room lighting Dual Racor 1000 fuel filters for main engines  
Remote compressor for Aft Deck & Flybridge drink cooler Electric fuel pump w/auto/manual  
settings for day tank 220V freshwater pumps w/expansion tank Hydraulic power pack for gauge  
door & swim ladder Six point oil change pump w/manifold (2) 220V Engine Room blowers Site  
gauge on aft starboard fuel tank Hydraulic power pack for trim tabs Hydraulic pump & motor for  
power steering Manual Engine Room bilge pump w/two position

220V Engine Room bilge pump w/six position manifold (2) Racor 500 fuel filter for generators Start /Stop switches in Engine Room Seven Step stainless steel ladder from port side deck to Engine Room (4) Cruiseair AC compressors Auto air dampers for fire on 220V circulation fans/blowers 800 GPH Sea Recovery Watermaker

## Electrical Equipment

12V/24V DC electrical system 110V/220V 60Hz AC electrical system (2) a Lower and Upper Kholer 23 kW genset in soundshield Mastervolt MASS 24 volt 100 amp battery charger (2) 8D 12 volt batteries for 24 volt engine starting (2) 12 batteries for 12 volt generator starting (8) 8D 12 volt batteries for 24 volt house system Bonding system Newmar 24 to 12 volt converter for navigation electronics Hubbell telephone/TV outlets at transom (2) 50-amp 220V Cable Master units inlets aft (2) 50-amp 220V inlets Starboard side forward Pilothouse electrical panel by Cantalupi 21 Breaker protected 24V DC circuits (Pilothouse) 13 Breaker protected 220V AC circuits (Pilothouse) 8 Breaker protected 110V AC circuits (Pilothouse) Navigation light switches w/indicator diagram (Pilothouse) Bilge/grey/black water pump switches w/indicator diagram (Pilothouse) Navigation light switches w/indicator diagram (Pilothouse) Bilge/grey/black water pump switches w/indicator diagram (Pilothouse) Navigation light switches w/indicator diagram (Pilothouse) 24V volt meter (Engine Room) 24V amp meter (Engine Room) (2) Generator volt meter (Engine Room) (2) Shorepower volt meters (Engine Room) (2) Shorepower amp meters (Engine Room) Generator start/stop switches (Engine Room) Guest battery isolation transformer Main Engine Room panel Hz meter Main Engine Room panel volt meter 20 Breaker protected 220V circuits at Engine Room panel 32 Breaker protected 24V circuits at Engine Room panel Shore power indicator lights at Engine Room panel Generator power indicator lights at Engine Room panel

## Lower Helm Station

Raymarine 9a MFD Chartplotter / GPS 3 Raymarine i70 MDF's w/ Autopilot VHF Radio Bow Thruster Control Full MTU gauges Micro Commander controls Trim tab controls w/indicator Wiper controls Windlass controls Start/stop switches & keys Remote spotlight controls Horn Main AC/DC panel, on aft bulkhead of Lower Helm Area

## Fly Bridge

Full Bimini Top w/ removable Center Fly Double helm seat 220V Flybridge electric grill w/polished stainless steel heat shield Glass & stainless hatch to Salon Fiberglass radar arch w/(2) down lights 3 Person sun lounge w/storage below Expandable, adjustable height (Hi-Lo) table (with insert to convert to very large dining table) Curved seating aft w/storage below cushions Flybridge drink cooler w/remote mounted compressor Flybridge sink Helm and Seating covers (1) Life rings (2) KVH matching domes on arch wings Storage cabinet Flybridge stereo



Deck lighting Flybridge deck drains

**Flybridge Helm Station** Garmin 5208 Chartplotter / GPS / Radar 3 Raymarine i70 MFD's w/ AutoPilot Bow Thruster Control VHF Radio Trim tab controls w/indicator Full MTU engine gauges Micro commander controls Remote spotlight controls Azimut varnished wood wheel Fusion Stereo Control Horn

---

## Aft Deck

---

Teak sole Hinged fiberglass boarding gates port & starboard Transom walk-up steps to aft deck both port & starboard (2) Stainless & plexiglass gates to swim platform (2) Lofrans chrome docking capstans on Aft Deck w/foot switches Benchseat aft w/removable cushions Teak dining table on double pedestal Port & Starboard Azimut factory fiberglass top loading refrigerators/freezers w/remote compressors (11) Overhead recessed deck lights Retrieval winch & roller system for Jet Ski Hydraulic tender garage door Fiberglass integral swim platform w/non-skid decking Hidden remote control swim ladder Hot & cold shower on transom Swim ladder & garage hydraulic control switches Freshwater washdown Flat oval stainless steel rail over fiberglass bulwarks Lazarette access from portside steps

---

## Foredeck

---

The Foredeck features a large sun pad, access to the crew cabin and chain locker

Lofrans vertical windlass w/wildcat & capstan Wired remote windlass controls Bow cushions Deck hatch access to Crew Cabin Navy style anchor w/all chain rode (6) Deck lights Flat oval Stainless steel handrails (2) Side access storage lockers International navigation lights Port & starboard flush mount boat hooks (3) Port & (3) Starboard overhead deck lights Starboard side water fill behind hinged door Pantograph Galley door (2) Anchor locker hatches Port side Pantograph Engine Room access door Stainless steel bow pennant (2) Port & Starboard built-in deck box storage areas in after portion of forward cabin top

---

## Deck Facilities

---

Stern warping winches Port or starboard bulwarks doors located both forward and aft Full walkaround, Windlass with washdown

---

## Исключения

---

При продаже яхты исключаются личные вещи владельца.

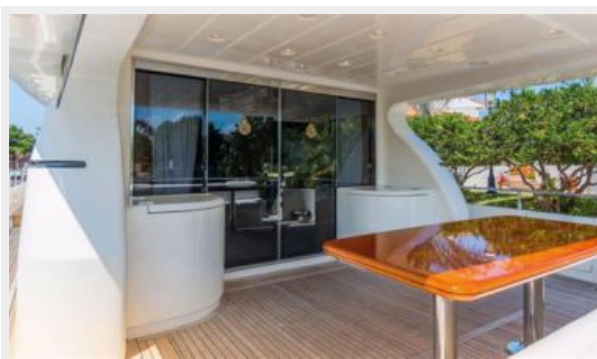
---

## Отказ от ответственности

---

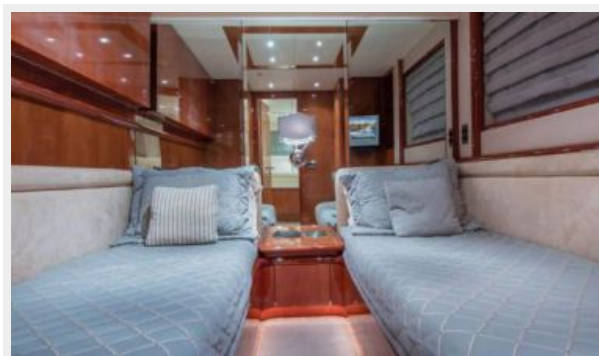
Компания предоставляет описание судна или яхты добросовестно, но не может гарантировать точность этой информации, а также не ручается за техническое состояние. Покупатель должен проинструктировать своих агентов или оценщиков исследовать представленную информацию более подробно, по собственному желанию. Продажа судна или яхты, изменение цены или снятие с продажи будет происходить без предварительного уведомления.

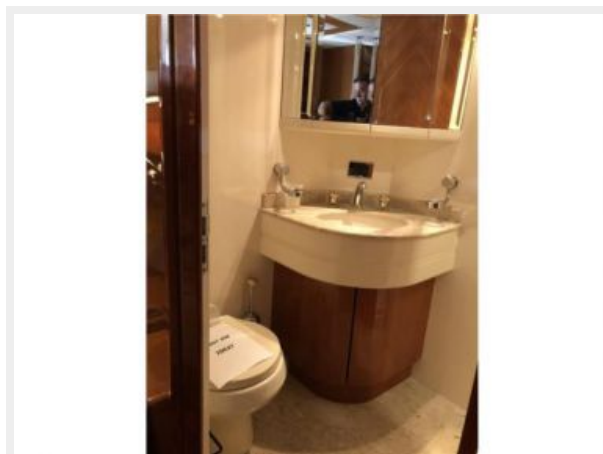
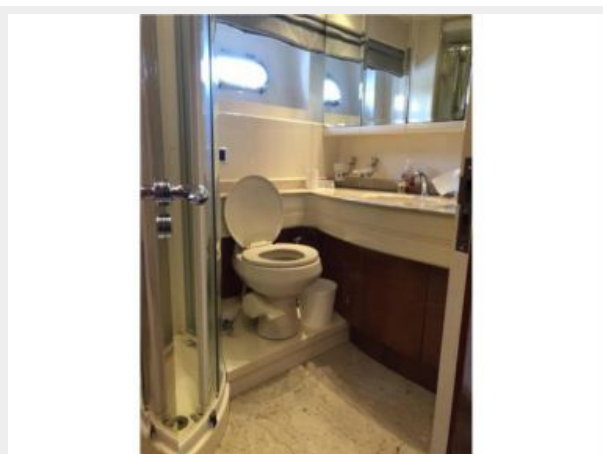
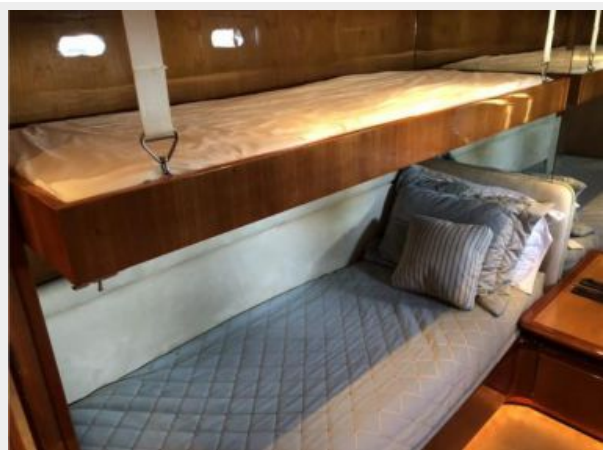
# ФОТОГРАФИИ

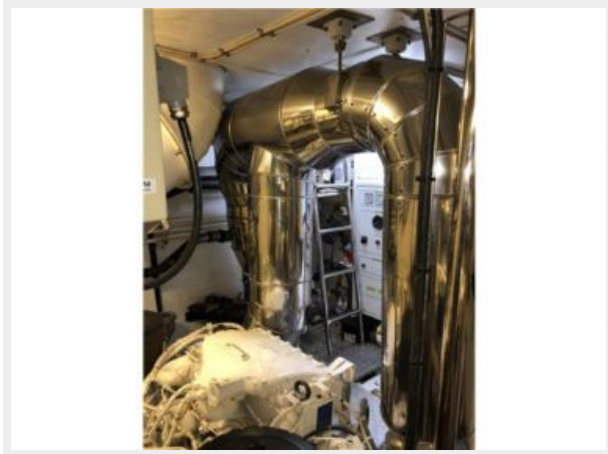














# КОНТАКТЫ

---

Андрей Шестаков (Andrey Shestakov) – ведущий яхтенный брокер отдела продаж яхт и судов компании Shestakov Yacht Sales Inc. Официальный представитель Shestakov Yacht Sales Inc. для русскоговорящих клиентов в центральном офисе компании в Майами/Форт Лодердейл/Флорида/США.

## Контактная информация

---

Email: [andrey@shestakovyachtsales.com](mailto:andrey@shestakovyachtsales.com)

Web: [shestakovyachtsales.com](http://shestakovyachtsales.com)

## Телефоны

---

Краснодарский край: **+7(918)465-66-44**

США, Майами, Флорида: **+1(954)274-4435**

## Время работы

---

Понедельник – Суббота: **9:00 - 21:00**  
EDT

Воскресенье: **Закрито**

## Адрес

---



Harbour Towne Marina, 850 NE 3rd St,  
STE 213, Dania, FL 33004