

DREAM



Year Built: 2004

Model: Cruising Yacht

Price: PRICE ON APPLICATION

LOA: 36' (10.97m)

Beam: 13.16

Max Draft: 3' 11" (1.19m)

Cruise Speed: 20 Knots Kts. (23 MPH)

Max Speed: 26 Knots Kts. (30 MPH)

Our experienced yacht broker, Andrey Shestakov, will help you choose and buy a yacht that best suits your needs **dream** — n/a from our catalogue. Presently, at Shestakov Yacht Sales Inc., we have a wide variety of yachts available on our sale's list. We also work in close contact with all the big yacht manufacturers from all over the world.

If you would like to buy a yacht **dream** — n/a or would like help answering any questions concerning purchasing, selling or chartering a yacht, please call **+1(954)274-4435**

TABLE OF CONTENTS

TABLE OF CONTENTS	2
SPECIFICATIONS	5
Overview	5
Basic Information	6
Dimensions	6
Speed, Capacities and Weight	6
Accommodations	6
Hull and Deck Information	6
Engine Information	6
PHOTOS	7
360 Carver SS - Salon Entry	7
360 Carver SS - Salon Couch	7
360 Carver SS - Salon	7
360 Carver SS - Galley	7
360 Carver SS - Galley	8
360 Carver SS - Galley	8
360 Carver SS - Microwave/Convection Oven	8
360 Carver SS - Coffe Maker	8
360 Carver SS - Distribution Panel	9
360 Carver SS - Dinette	9
360 Carver SS - Dinette	9
360 Carver SS - Electrical and Storage	9
360 Carver SS - Master Stateroom	10
360 Carver SS - Master Stateroom TV	10
360 Carver SS - Master Head	10
360 Carver SS - Master Shower	10
360 Carver SS - Guest Stateroom	11
360 Carver SS - Guest Stateroom	11

360 Carver SS - Guest Stateroom Storage	11
360 Carver SS - Helm	11
360 Carver SS - Helm and Electronics	12
360 Carver SS - Helm Covers	12
360 Carver SS - Bridge Enclosure	12
360 Carver SS - Bimini Top	12
360 Carver SS - Aft Bench Seat and Storage	13
360 Carver SS - Engine Room	13
360 Carver SS - Engine Room	13
360 Carver SS - Engine Room Sea Strainer	13
360 Carver SS - Engine Room Battery Chargers	14
360 Carver SS - Engine Room Battery Switches	14
360 Carver SS - Engine Room Oil Changer	14
360 Carver SS - Engine Room	14
360 Carver SS - Engine Room CB Panel and Windlass Breaker	15
360 Carver SS - Bow Spot Light	15
360 Carver SS - Anchor System	15
360 Carver SS - Cockpit	15
360 Carver SS - Profile	16
360 Carver SS - Profile	16
360 Carver SS - Profile	16
360 Carver SS - Profile	16
360 Carver SS - Profile	16
360 Carver SS - Profile	17
360 Carver SS - Profile	17
CONTACTS	18
Contact details	18
Telephones	18
Office hours	18
Address	18

SPECIFICATIONS

Overview

This is undoubtedly the nicest example of this very popular convertible cruising yacht on the market today and she's Volvo diesel powered! One glance around this boat will confirm the owners' dedication to proper upkeep and maintenance. A two-owner boat, she reflects the love and attention she has received from both owners. She has been meticulously cared for and maintenance records are available. The Carver 360 Sports Sedan is famous for packing a lot of useful space into a 36 footer. With two private state rooms (the guest state room has two singles or can be quickly converted to a queen) and a fold out double in the salon, plentiful storage throughout, she comfortably sleeps six. This is one of the most commodious family cruisers you will ever find and yet she is easily handled by two. Stepping into the salon feels like stepping into a much larger yacht and the abundant use of cherry wood and other fine materials adds to the luxury. She is well equipped with all the modern amenities you would expect such as coffee maker, microwave/convection oven, central vacuum system, two reverse cycle A/C units, large head and shower, Vacuflush holding tank system with macerator and overboard discharge system and thoughtfully placed LED lighting throughout. The boat is exceptionally clean throughout including the engine room and bilge. The current owners have cruised Florida extensively in this boat and are now moving to a larger boat for expanded cruising.

Some Recent Upgrades Include:

- Ceramic Window Film Tinting
- New Flybridge Vinyl
- New Flybridge Seat Covers
- New Salon Flat Screen TV
- Updated Garmin Touch Screen Chart Plotter/ Sounder
- New Bottom Paint - April 2018
- Less than 100 Hours on Genset Overhaul
- All Flybridge Curtains and Isinglass in Excellent Condition

The Volvo Penta KAMD 300 Diesels run beautifully and use no oil. The engines had a complete cooling system service in January 2018 and NEW Upgraded, composite mixing elbows were installed in 2015. The generator engine was overhauled in 2015.

Vessel is easy to see at Longboat Key Mooring.

Basic Information

Category: Cruising Yacht

Sub Category: Express

Model Year: 2004

Year Built: 2004

Dimensions

LOA: 36' (10.97mm)

Beam: 13.16

Max Draft: 3' 11" (1.19mm)

Speed, Capacities and Weight

Cruise Speed: 20 Knots Kts. (23 MPH)

Max Speed: 26 Knots Kts. (30 MPH)

Gross Tonnage: 12373 Pounds

Water Capacity: 75 Gallons

Holding Tank: 25 Gal Gallons

Fuel Capacity: 280 Gal Gallons

Accommodations

Total Cabins: 2

Sleeps: 6

Hull and Deck Information

Hull Material: Fiberglass

Deck Material: Fiberglass Sandwich

Engine Information

Engines: 2

PHOTOS

360 Carver SS - Salon Entry



360 Carver SS - Salon Couch



360 Carver SS - Salon



360 Carver SS - Galley



360 Carver SS - Galley



360 Carver SS - Galley



360 Carver SS - Coffe Maker



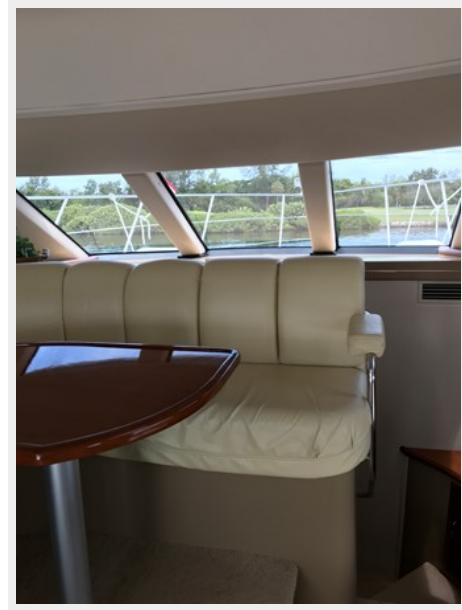
360 Carver SS - Microwave/Convection Oven



360 Carver SS - Distribution Panel



360 Carver SS - Dinette



360 Carver SS - Dinette



360 Carver SS - Electrical and Storage



360 Carver SS - Master Stateroom



360 Carver SS - Master Stateroom TV



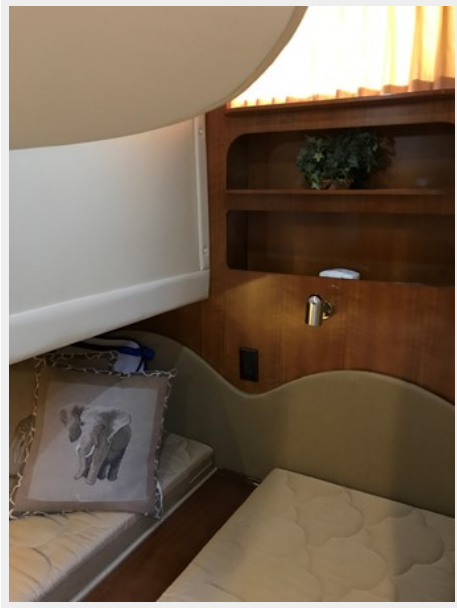
360 Carver SS - Master Head



360 Carver SS - Master Shower



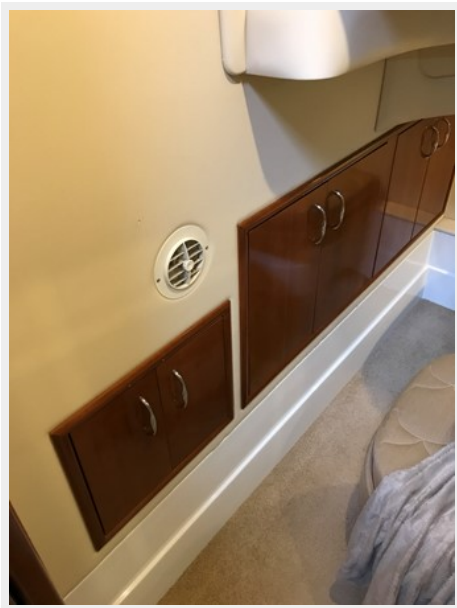
360 Carver SS - Guest Stateroom



360 Carver SS - Guest Stateroom



360 Carver SS - Guest Stateroom Storage



360 Carver SS - Helm



360 Carver SS - Helm and Electronics



360 Carver SS - Helm Covers



360 Carver SS - Bridge Enclosure



360 Carver SS - Bimini Top



360 Carver SS - Aft Bench Seat and Storage



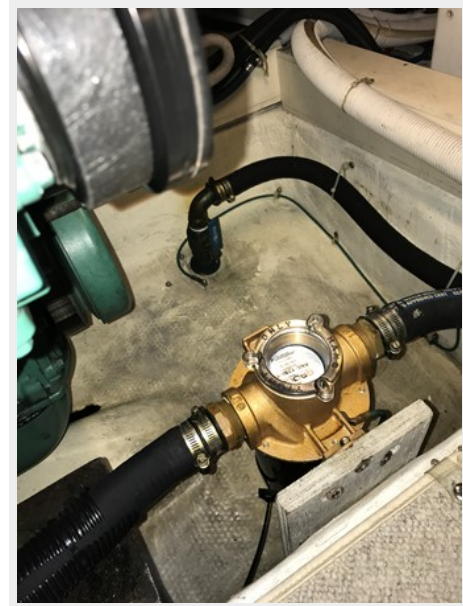
360 Carver SS - Engine Room



360 Carver SS - Engine Room



360 Carver SS - Engine Room Sea Strainer



360 Carver SS - Engine Room Battery Chargers



360 Carver SS - Engine Room Battery Switches



360 Carver SS - Engine Room Oil Changer



360 Carver SS - Engine Room



360 Carver SS - Engine Room CB Panel and Windlass Breaker



360 Carver SS - Bow Spot Light



360 Carver SS - Anchor System



360 Carver SS - Cockpit



360 Carver SS - Profile



360 Carver SS - Profile



360 Carver SS - Profile



360 Carver SS - Profile



360 Carver SS - Profile



360 Carver SS - Profile



CONTACTS

Andrey Shestakov, leading yacht broker of the sales department of Shestakov Yacht Sales Inc. Shestakov Yacht Sales Inc., the official representative of the Miami/Fort Lauderdale FL headquarters.

Contact details

Email: andrey@shestakovyachtsales.com

Web: shestakovyachtsales.com/en/

Telephones

USA: +1(954)274-4435

Office hours

Monday – Saturday: **9:00 - 21:00** EDT

Sunday: **closed**

Address



Harbour Towne Marina, 850 NE 3rd St,
STE 213, Dania, FL 33004