

## DREAM



**Год постройки:** 2004

**Модель:** Cruising Yacht

**Цена:** **ЦЕНА ЯХТЫ ПО ЗАПРОСУ**

**Длина общая:** 36' (10.97m)

**Ширина:** 13.16

**Макс. осадка:** 3' 11" (1.19m)

**Крейс. скорость:** 20 Knots Kts. (23 MPH)

**Макс. скорость:** 26 Knots Kts. (30 MPH)

Купить **dream** — н/д а также выбрать подходящую вам яхту из нашего каталога яхт вам поможет опытный яхтенный брокер Андрей Шестаков. На сегодняшний день компания **Shestakov Yacht Sales Inc.** имеет большое количество яхт в собственном списке продаж, а также тесно сотрудничает со всеми крупными яхтенными производителями по всему миру.

Для того чтобы купить яхту **dream** — н/д а также проконсультироваться по любому вопросу связанному с покупкой, продажей, чартером яхт позвоните по телефону **+7(918)465-66-44**.

# ОГЛАВЛЕНИЕ

ОГЛАВЛЕНИЕ	2
ХАРАКТЕРИСТИКИ	5
Обзор	5
Основная информация	6
Размеры	6
Скорость, вместимость и масса	6
Размещение	6
Корпус и палуба	6
Информация о двигателе	6
ФОТОГРАФИИ	7
360 Carver SS - Salon Entry	7
360 Carver SS - Salon Couch	7
360 Carver SS - Salon	7
360 Carver SS - Galley	7
360 Carver SS - Galley	8
360 Carver SS - Galley	8
360 Carver SS - Microwave/Convection Oven	8
360 Carver SS - Coffe Maker	8
360 Carver SS - Distribution Panel	9
360 Carver SS - Dinette	9
360 Carver SS - Dinette	9
360 Carver SS - Electrical and Storage	9
360 Carver SS - Master Stateroom	10
360 Carver SS - Master Stateroom TV	10
360 Carver SS - Master Head	10
360 Carver SS - Master Shower	10
360 Carver SS - Guest Stateroom	11
360 Carver SS - Guest Stateroom	11

360 Carver SS - Guest Stateroom Storage	11
360 Carver SS - Helm	11
360 Carver SS - Helm and Electronics	12
360 Carver SS - Helm Covers	12
360 Carver SS - Bridge Enclosure	12
360 Carver SS - Bimini Top	12
360 Carver SS - Aft Bench Seat and Storage	13
360 Carver SS - Engine Room	13
360 Carver SS - Engine Room	13
360 Carver SS - Engine Room Sea Strainer	13
360 Carver SS - Engine Room Battery Chargers	14
360 Carver SS - Engine Room Battery Switches	14
360 Carver SS - Engine Room Oil Changer	14
360 Carver SS - Engine Room	14
360 Carver SS - Engine Room CB Panel and Windlass Breaker	15
360 Carver SS - Bow Spot Light	15
360 Carver SS - Anchor System	15
360 Carver SS - Cockpit	15
360 Carver SS - Profile	16
360 Carver SS - Profile	16
360 Carver SS - Profile	16
360 Carver SS - Profile	16
360 Carver SS - Profile	17
360 Carver SS - Profile	17
<b>КОНТАКТЫ</b>	<b>18</b>
Контактная информация	18
Телефоны	18
Время работы	18
Адрес	18



---

# ХАРАКТЕРИСТИКИ

---

## Обзор

---

This is undoubtedly the nicest example of this very popular convertible cruising yacht on the market today and she's Volvo diesel powered! One glance around this boat will confirm the owners' dedication to proper upkeep and maintenance. A two-owner boat, she reflects the love and attention she has received from both owners. She has been meticulously cared for and maintenance records are available. The Carver 360 Sports Sedan is famous for packing a lot of useful space into a 36 footer. With two private state rooms (the guest state room has two singles or can be quickly converted to a queen) and a fold out double in the salon, plentiful storage throughout, she comfortably sleeps six. This is one of the most commodious family cruisers you will ever find and yet she is easily handled by two. Stepping into the salon feels like stepping into a much larger yacht and the abundant use of cherry wood and other fine materials adds to the luxury. She is well equipped with all the modern amenities you would expect such as coffee maker, microwave/convection oven, central vacuum system, two reverse cycle A/C units, large head and shower, Vacuflush holding tank system with macerator and overboard discharge system and thoughtfully placed LED lighting throughout. The boat is exceptionally clean throughout including the engine room and bilge. The current owners have cruised Florida extensively in this boat and are now moving to a larger boat for expanded cruising.

### Some Recent Upgrades Include:

- Ceramic Window Film Tinting
- New Flybridge Vinyl
- New Flybridge Seat Covers
- New Salon Flat Screen TV
- Updated Garmin Touch Screen Chart Plotter/ Sounder
- New Bottom Paint - April 2018
- Less than 100 Hours on Genset Overhaul
- All Flybridge Curtains and Isinglass in Excellent Condition

The Volvo Penta KAMD 300 Diesels run beautifully and use no oil. The engines had a complete cooling system service in January 2018 and NEW Upgraded, composite mixing elbows were installed in 2015. The generator engine was overhauled in 2015.

Vessel is easy to see at Longboat Key Mooring.

## Основная информация

Тип судна: Cruising Yacht

Подкатегория: Express

Модельный год: 2004

Год постройки: 2004

## Размеры

Длина общая: 36' (10.97mm)

Ширина: 13.16

Макс. осадка: 3' 11" (1.19mm)

## Скорость, вместимость и масса

Крейс. скорость: 20 Knots Kts. (23 MPH)

Макс. скорость: 26 Knots Kts. (30 MPH)

Чистый вес: 12373 Pounds

Вместимость воды: 75 Gallons

Вместимость сточного бака: 25 Gal  
Gallons

Объем топливного бака: 280 Gal Gallons

## Размещение

Всего кают: 2

Спальные места: 6

## Корпус и палуба

Материал корпуса: Fiberglass

Материал палубы: Fiberglass Sandwich

## Информация о двигателе

Двигатели: 2

# ФОТОГРАФИИ

**360 Carver SS - Salon Entry**



**360 Carver SS - Salon Couch**



**360 Carver SS - Salon**



**360 Carver SS - Galley**



**360 Carver SS - Galley**



**360 Carver SS - Galley**



**360 Carver SS - Coffe Maker**



**360 Carver SS - Microwave/Convection Oven**





**360 Carver SS - Distribution Panel**



**360 Carver SS - Dinette**



**360 Carver SS - Dinette**



**360 Carver SS - Electrical and Storage**



**360 Carver SS - Master Stateroom**



**360 Carver SS - Master Stateroom TV**



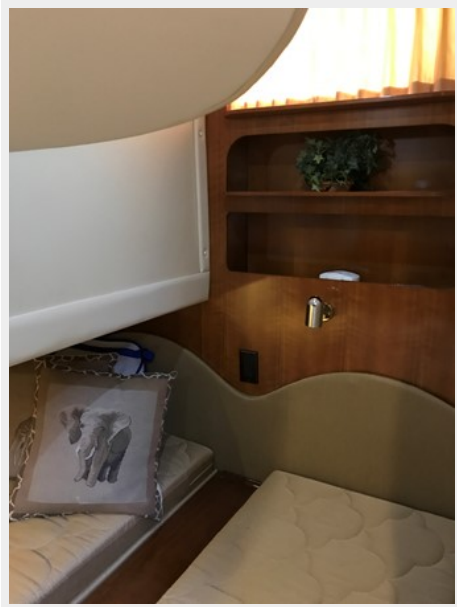
**360 Carver SS - Master Head**



**360 Carver SS - Master Shower**



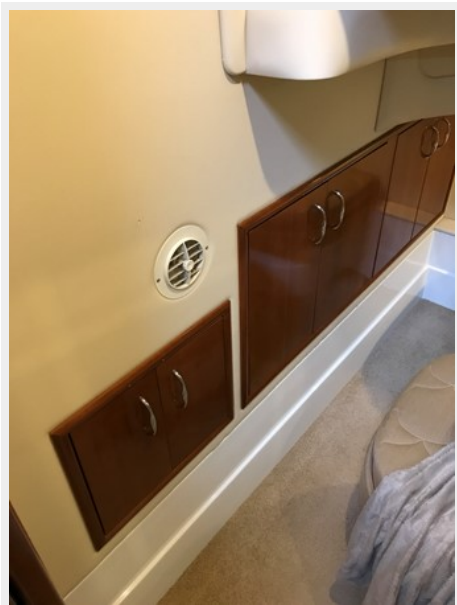
**360 Carver SS - Guest Stateroom**



**360 Carver SS - Guest Stateroom**



**360 Carver SS - Guest Stateroom Storage**



**360 Carver SS - Helm**



### 360 Carver SS - Helm and Electronics



### 360 Carver SS - Helm Covers



### 360 Carver SS - Bridge Enclosure



### 360 Carver SS - Bimini Top



**360 Carver SS - Aft Bench Seat and Storage**



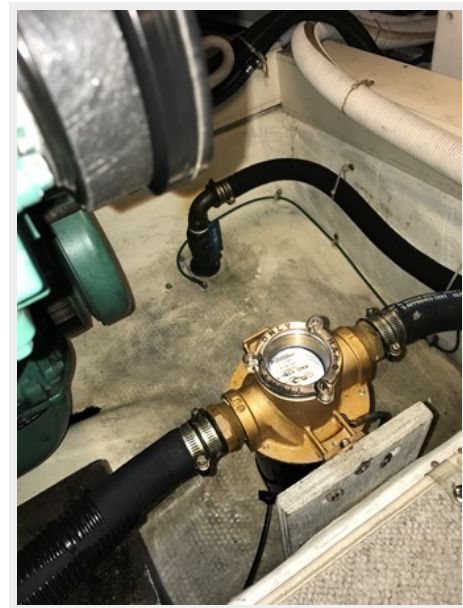
**360 Carver SS - Engine Room**



**360 Carver SS - Engine Room**



**360 Carver SS - Engine Room Sea Strainer**



### 360 Carver SS - Engine Room Battery Chargers



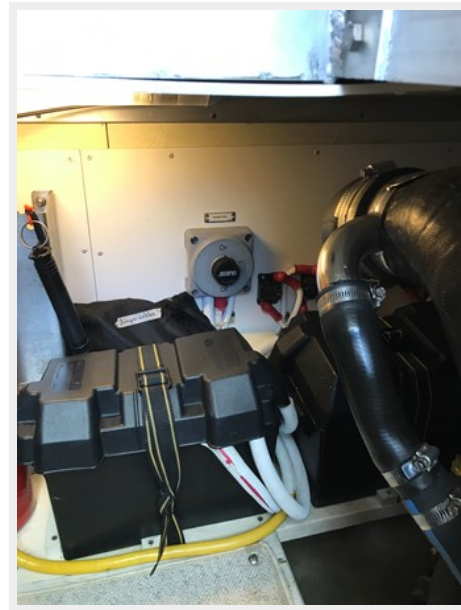
### 360 Carver SS - Engine Room Battery Switches



### 360 Carver SS - Engine Room Oil Changer



### 360 Carver SS - Engine Room



### 360 Carver SS - Engine Room CB Panel and Windlass Breaker



### 360 Carver SS - Bow Spot Light



### 360 Carver SS - Anchor System



### 360 Carver SS - Cockpit



**360 Carver SS - Profile**



**360 Carver SS - Profile**



**360 Carver SS - Profile**



**360 Carver SS - Profile**





**360 Carver SS - Profile**



**360 Carver SS - Profile**



# КОНТАКТЫ

---

Андрей Шестаков (Andrey Shestakov) – ведущий яхтенный брокер отдела продаж яхт и судов компании Shestakov Yacht Sales Inc. Официальный представитель Shestakov Yacht Sales Inc. для русскоговорящих клиентов в центральном офисе компании в Майами/Форт Лодердейл/Флорида/США.

## Контактная информация

---

Email: [andrey@shestakovyachtsales.com](mailto:andrey@shestakovyachtsales.com)

Web: [shestakovyachtsales.com](http://shestakovyachtsales.com)

## Телефоны

---

Краснодарский край: **+7(918)465-66-44**

США, Майами, Флорида: **+1(954)274-4435**

## Время работы

---

Понедельник – Суббота: **9:00 - 21:00**  
EDT

Воскресенье: **Закрето**

## Адрес

---



Harbour Towne Marina, 850 NE 3rd St,  
STE 213, Dania, FL 33004