

ENDLESS LOVE — TARTAN



Builder: TARTAN

Year Built: 1986

Model: Cruising Sailboat

Price: PRICE ON APPLICATION

Location: United States

LOA: 40' 0" (12.19m)

Beam: 12' 8" (3.86m)

Min Draft: 4' 9" (1.45m)

Max Draft: 8' 5" (2.57m)

Our experienced yacht broker, Andrey Shestakov, will help you choose and buy a yacht that best suits your needs **Endless Love — TARTAN** from our catalogue. Presently, at Shestakov Yacht Sales Inc., we have a wide variety of yachts available on our sale's list. We also work in close contact with all the big yacht manufacturers from all over the world.

If you would like to buy a yacht **Endless Love — TARTAN** or would like help answering any questions concerning purchasing, selling or chartering a yacht, please call **+1(954)274-4435**

TABLE OF CONTENTS

TABLE OF CONTENTS	2
SPECIFICATIONS	3
Overview	3
Basic Information	6
Dimensions	6
Speed, Capacities and Weight	6
Accommodations	6
Hull and Deck Information	6
Engine Information	7
PHOTOS	8
CONTACTS	11
Contact details	11
Telephones	11
Office hours	11
Address	11

SPECIFICATIONS

Overview

Is your goal to sail the blue waters of the world oceans. Maybe it's to explore the islands or it could be just having a beautiful classic cruiser/racer to excel around the marks and have a comfortable solid boat for those memorable family cruises; "Endless Love" is the vessel for you.

This Tartan T-40 has crisscrossed the Atlantic. With its swing center keel, it has maneuvered through "skinny waters" and with its sails trimming racing package: hydraulic back-stay and boom vang and the multi-track car system for fine tuning of the new (2019) 125% furling head-sail makes her a fierce competitor.

"Endless Love" has just finished an exhausted overhaul. The superstructure is sound the classic lines exciting and the interior beautiful.

2018 - total interior refinish - new teak and holly sole

2018 - Mack 125% furling genoa

2018 - Raymarine EV-400 Autopilot

2017 - Sea Hawk Cukote Copolymer bottom paint

Boat Name Endless Love Dimensions LOA: 40 ft 3 in Beam: 12 ft 8 in LWL: 31 ft 7 in Minimum Draft: 4 ft 9 in Maximum Draft: 8 ft 5 in Ballast: 7600 lbs Engines Engine 1: Engine Brand: Westerbeke Year Built: 1986 Engine Model: 46 Engine Type: Inboard Engine/Fuel Type: Diesel Engine Hours: 2932 Propeller: Folding propeller Drive Type: Direct Drive Engine Power: 42 HP Tanks Fresh Water Tanks: 2 Aluminum (50 Gallons) Fuel Tanks: 1 Aluminum (47 Gallons) Holding Tanks: 1 (16 Gallons) Accommodations Number of single berths: 1 Number of double berths: 3 Number of cabins: 2 Number of heads: 1 Electronics Depthsounder - Raymarine ST60 2015 Wind speed and direction - Raymarine ST60 2015 VHF Autopilot - Raymarine EV -400 - 2018 Navigation center - Raymarine Radar - Raymarine HD 18" Radome Log-speedometer - Raymarine ST60 2015 CD player Compass - Ritche Cockpit speakers - 2018 Sails Storm jib Furling genoa - Mack 125% 2019 Fully battened mainsail - with Lazyjacks Spinnaker Rigging Steering wheel Inside Equipment Marine head - all seals have been replaced Deep freezer Battery charger Electric bilge pump Refrigerator Heating Microwave oven Manual bilge pump Hot water - 6 gals. Oven - Propane 3 burner stovetop/oven Electrical Equipment Shore power inlet - 30 Amps Outside Equipment/Extras Cockpit table Electric windlass Covers Bimini Top - with side panels Genoa cover Mainsail cover Lazyjacks Spray hood

General Discription

Walking the dock to "Endless Love" you may be imagining a pedigree worn old boat. Then the bowsprit appears with its sparkling Suncor 45lbs. anchor. Taking a step closer the classic lines accented by the deep blue hull, rich color toe and hand rails, and clean white decks appears,

and you become conscious that there is nothing worn about this vessel. This Tartan T-40 is stunning!

This 1986 Tartan T-40 was built to accommodate the Bluewater sailor, the explorer that desires to live amongst the islands with the ability to find safe harbor by gunk-holing, or the highly competitive racer that wants the comfort and safety of a family cruiser.

“Endless Love” has lived many lives. The first owner was a racer who was haunted by obtaining that extra quarter of a knot. He installed the hydraulic back stay and boom vang (adjustments all within reach of the helm) and the block car system for adjusting the headsail for that perfect setting.

The second owner equipped it and venture across the Atlantic, lived on her and sailed the Med. Then sailed her back again.

The current owner fell in love with her and decided that she needed a first-rate renovation, it took five years – a true labor of love, to restore her original beauty and to bring her up into the twenty first century.

Sailing this fine vessel is a sheer joy. All lines lead back to the spacious cockpit. The full compliment of self-tailing winches aid in the ease of raising the mainsail and headsail handling.

The running rigging for the mainsail includes: clutched halyard, outhaul, downhaul, the two reef point lines – with the lazy jacks delivering a safe reef all performed from the cockpit, add the cabin top traveler/ mainsheet and the hydraulic backstay and boom vang makes getting that proper twist in the mainsail a breeze – no matter what the conditions are.

The headsail, 2019 furling Mack 125% genoa, with the block car system delivers the adjustability and power needed to take “Endless Love” to your destination.

Over the last four years all the electronics have been updated. The owner went with the full suite of Raymarine electronics: EV- 400 Autopilot (2018), 12.5” E125 Chartplotter, Tridata (wind, speed, depth) ST60, HD 18” Radome radar, AIS 350.

The 1986 Westerbeke 46 engine has 2,932 hours. Its been professionally maintained and all new belts, hoses and filters have been installed. With the aid of the Max Pro folding 2 bladed prop; this engine drives the boat at 5.5 knots at 2,200 rpm cruising speed.

The boat was hauled in 2017 and the bottom was inspected for blister, sanded and painted with Sea Hawk Cukote Copolymer bottom paint. The swing keel, 4’9” draft up and 8’5” down allows this boat to travel where other 40 footers wish they could.

The Suncor 45lb anchor with a brand new 100’ chain and 150’ of line rode is easily raised by the electric Ideal windlass, which can raise 500 lbs. – extremely heavy duty. There is a Fortress FX-27, 21 lbs. with 20’ of chain and a quantity of line rode, designed to be used as a storm anchor.

The cockpit has been designed with the coamings for comfort and safety. Its covered by a two section bimini that attached to a dodger. If desired the two side panels can be easily installed. Off the binnacle is a beautiful teak swing table.

Heading down the wide companionway you'll enter the main salon. Turning to starboard is the entrance to the aft cabin. Stepping into it the number of drawers and the hanging cedar lined closet provides a large amount of storage. This cabin has a large queen size berth.

Across from this cabin is the galley with the chart table next to it. The chart table has a redundant Chartplotter, VHF radio and the electrical panel, the refrigeration and freezer lockers are located in the galley; which has been upgraded with the Grunert AR50 cold plate units. Moving along the counter is the three-burner propane stove and oven combo. Above the stove is the microwave.

The "J" shaped galley turns towards the right where the deep stainless-steel sink with a cutting board is located.

The main salon is bright and airy. This is due to the new ports that the owner has installed that are 25% bigger than the originals.

The salon has a starboard lounge with a lee cloth for sleeping under way, has ample storage behind it, across to center is a winged table and a "U" shape settee. Heading forward is the V Berth with a private entrance into the head with a separate shower stall.

The teak and holly sole is new this year. It enhances the beautiful cherry interior.

Sail Inventory

Full baton Mainsail

125% Mack furling Genoa

Storm Jib

Spinnaker

Cutter Jib

Broker Note

I have sailed this beauty. She performed extremely well from the time we left the dock until we returned. All the electronic were working. The engine started without a hitch and easily pushed this vessel. The sails are in excellent condition. Setting them was a real joy. The cockpit allows plenty of space. This boat has so many advantages in the way its rigged and the interior would please any family. It's twenty first century vessel with the classic charm

Basic Information

Category: Cruising Sailboat

Sub Category: Racing Sailboat

Model Year: 1986

Year Built: 1986

Country: United States

Dimensions

LOA: 40' 0" (12.19m)

LWL: 31' 7" (9.63m)

Beam: 12' 8" (3.86m)

Min Draft: 4' 9" (1.45m)

Max Draft: 8' 5" (2.57m)

Speed, Capacities and Weight

Water Capacity: 50 Gallons

Holding Tank: 16 Gallons

Fuel Capacity: 47 Gallons

Accommodations

Total Cabins: 2

Total Heads: 1

Hull and Deck Information

Hull Material: Fiberglass

Hull Finish: Aluminum

Engine Information

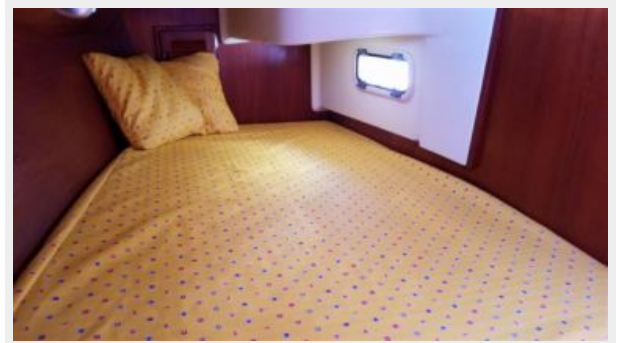
Engines: 1

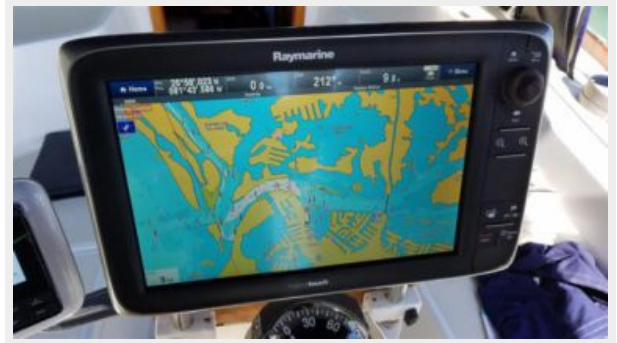
Manufacturer: Westerbeke

Model: 46

Fuel Type: Diesel

PHOTOS







CONTACTS

Andrey Shestakov, leading yacht broker of the sales department of Shestakov Yacht Sales Inc. Shestakov Yacht Sales Inc., the official representative of the Miami/Fort Lauderdale FL headquarters.

Contact details

Email: andrey@shestakovyachtsales.com

Web: shestakovyachtsales.com/en/

Telephones

USA: +1(954)274-4435

Office hours

Monday – Saturday: **9:00 - 21:00** EDT

Sunday: **closed**

Address



Harbour Towne Marina, 850 NE 3rd St,
STE 213, Dania, FL 33004