

## LIL HAP — BELZONA MARINE



**Судостроитель:** [Belzona Marine](#)

**Год постройки:** 2014

**Модель:** Яхты с центральной консолью

**Цена:** **ЦЕНА ЯХТЫ ПО ЗАПРОСУ**

**Местонахождение:** United States

**Длина общая:** 32' 6" (9.91m)

**Ширина:** 10' 8" (3.25m)

**Мин. осадка:** 2' 4" (0.71m)

**Макс. осадка:** 2' 6" (0.76m)

**Крейс. скорость:** 32 Kts. (37 MPH)

**Макс. скорость:** 43 Kts. (49 MPH)

Купить **LIL HAP — Belzona Marine** а также выбрать подходящую вам яхту из нашего каталога яхт вам поможет опытный яхтенный брокер Андрей Шестаков. На сегодняшний день компания **Shestakov Yacht Sales Inc.** имеет большое количество яхт в собственном списке продаж, а также тесно сотрудничает со всеми крупными яхтенными производителями по всему миру.

Для того чтобы купить яхту **LIL HAP — Belzona Marine** а также проконсультироваться по любому вопросу связанному с покупкой, продажей, чартером яхт позвоните по телефону **+7(918)465-66-44**.

# ОГЛАВЛЕНИЕ

---

ОГЛАВЛЕНИЕ	2
ХАРАКТЕРИСТИКИ	6
Основная информация	6
Размеры	6
Скорость, вместимость и масса	6
Размещение	6
Корпус и палуба	6
Информация о двигателе	7
ПОДРОБНОЕ ОПИСАНИЕ	8
Layout	8
Bow	8
Console	9
Cockpit Aft	10
Interior	11
Electrical	12
Remarks	12
History of Hours	12
Notes on Builder	13
Exclusions	13
Disclaimer	13
Исключения	14
Отказ от ответственности	14
ФОТОГРАФИИ	15
Enclosed Windlass, S/S Anchor	15
Custom Tow Eye	15
Bow Seat	15
Bow Seating	15
Starboard Side Seat Up	15

Starboard Side Seat Down	15
Starboard Side Seat Down	16
Forward Seat Storage	16
Forward Under Deck Storage	16
Forward Well W/Macerator	16
One Piece Windshield	16
Forward Console Seating	16
Forward Console	17
Wide Walkways	17
Helm Area	17
Helm Seat Bolster Position	17
Helm Seat Position	17
Aft Hardtop	17
Helm Area	18
Helm	18
Helm	18
Helm Area	18
Helm Glovebox	18
Helm Area	18
Console Storage	19
Console Storage	19
Console Storage	19
Touchscreen Furuno	19
Yamaha Gauge	19
Hardtop Forward	19
Hardtop, Aft	20
Inside Console	20
Console VHF & Stereo	20
Console Sink/Shower	20

Console Electrical Panel	20
Console Dead Lights	20
Starboard Sliding Door	21
Starboard Sliding Door	21
Starboard Sliding Door	21
Sliding Door Closed	21
Telescoping Swim Ladder	21
Aft Seats Folded	21
Aft Seats Deployed	22
Optional Transom Door	22
Transom Live Well	22
Night Lighting	22
Night Lighting	22
Night Lighting	22
Toilet System	23
Battery Compartment	23
Clean Bilge, Sunshade Supports	23
Engines Fully Above Water	23
Engines Always Covered	23
Transom	23
Tender	24
Pampered Life	24
Great Side Entry Door	24
Jan 2014 Hull Construction Looking Forward	24
Jan 2014 Hull Construction Aft	24
Jan 2014 Beefy Transom Section	25
Jan 2014 Deck Piece Looking Forward	25
Jan 2014 Deck Piece Looking Aft	25
КОНТАКТЫ	26

---

Контактная информация	26
Телефоны	26
Время работы	26
Адрес	26

# ХАРАКТЕРИСТИКИ

## Основная информация

Тип судна: Яхты с центральной консолью **Модельный год:** 2014

**Год постройки:** 2014

**Страна:** United States

**Верх:** Hardtop

## Размеры

**Длина общая:** 32' 6" (9.91m)

**Ширина:** 10' 8" (3.25m)

**Мин. осадка:** 2' 4" (0.71m)

**Макс. осадка:** 2' 6" (0.76m)

## Скорость, вместимость и масса

**Крейс. скорость:** 32 Kts. (37 MPH)

**Макс. скорость:** 43 Kts. (49 MPH)

**Водоизмещение:** 12000 Pounds

**Чистый вес:** 6 Pounds

**Вместимость воды:** 41 Gallons

**Вместимость сточного бака:** 10 Gallons

**Объем топливного бака:** 280 Gallons

## Размещение

**Всего ком. состава:** 1

## Корпус и палуба

**Материал корпуса:** Fiberglass

**Материал палубы:** Fiberglass

**Комплектация корпуса:** Deep Vee

**Дизайнер корпуса:** Belzona

**Дизайнер экстерьера:** Belzona

**Дизайнер интерьера:** Belzona

## Информация о двигателе

---

**Двигатели:** 2

**Производитель:** Yamaha

**Модель:** F 300

**Тип двигателя:** Outboard

**Тип топлива:** Gas

---

# ПОДРОБНОЕ ОПИСАНИЕ

---

## Layout

---

Classic Center Console layout with a twist! Fold away seats fore and aft maximize deck space. A 16 sq. ft. Center Console cabin offers a head, sink and shower.

Unique sliding starboard side door with foldout ladder makes water sports a breeze!

Hull and underside of hardtop is Marlin Blue gel coat.

## Bow

---

Flip up navigation bow lights

Anchor locker with stainless steel plow anchor, chain & rope Stainless steel anchor strike plate at bow

Lewmar windlass with controls at helm and bow Coiled wash down hose mounted at anchor locker

Freshwater hose with quick disconnect in anchor locker

Small Danforth secondary anchor with line and chain

(2) Bow rod holders

Hand rail at bow

Forward bow seat with insulated storage box

Port and starboard seating folds out of hull side

Forward LED spreader light

(2) JL Audio speakers forward

Forward insulated fish box with overboard pump out underdeck

Upgraded 5 HP Lewmar bow thruster

Stainless steel side deck rails

Stainless steel helm rail

(6) Gunwale rod holders



Padded cockpit bolsters

(6) 8" Flush stainless pull up cleats

Forward shade with stainless steel poles

Nonskid fiberglass decks

(3) Rule automatic bilge pumps 2000 GPH each

## Console

---

Forward console seating with (4) stainless drink holders and storage below

One piece windshield, forward facing for reduced glare & rapid water shedding

Low profile integrated hard top with single FRP leg aft, windshield supports forward

Fiberglass helm tilts forward for maintenance

(2) Helm chairs with flip up bolsters

Heavy stainless steel rails

(4) Rod holders

(2) Drink holders

Flip up footrest to starboard

Fiberglass molded footrest to port

Edson stainless steel helm wheel with speed knob with Yamaha power assist steering

(12) Breaker protected switches for lights and pumps

(4) Overhead LED lights in red, white and blue

White or blue lights around perimeter of console

Lenco trim tab controls

Lewmar windlass control

Yamaha binnacle engine control

Icom Command mic for VHF mounted in cabin

Fusion stereo remote for stereo mounted in the cabin

Lewmar joystick bow thruster control

Ritchie 4" magnetic compass

Hinged glove box with 12 volt outlet and USB

Single Yamaha key switch

Yamaha push to start system

Yamaha Engine data display

15" Furuno touch screen radar, depth and plotter

Removable Helm enclosure (close to console) wraps around seating

Removable Helm enclosure with spray wings to outside gunwale

(2) 15' Radial mounted Taco Grand Slam outriggers

Taco center rigger

Shakespeare VHF antenna

Shakespeare AM/FM antenna

Furuno 20" Raydome

Trumpet Horn

(2) Acrylic tackle drawers

Acrylic storage cabinet

Blue LED courtesy light around leaning post

(3) Sea Blaze 3 by Lumitech underwater lights blue or white

5 Gallon hot water heater Room for second 15" nav screen

---

## Cockpit Aft

---

3.5' Starboard sliding door in hull side

Armstrong 4 step telescoping swim ladder under FRP Hatch at starboard side

Fold Away aft bench seat in transom trunk

Fold away seat to starboard

Live well

(2) 254 qt. insulated fish boxes with overboard pumps

(3) Aft rod holders

(2) Stainless steel cup holders

Salt water washdown

Cockpit shower

Waste pump out

(2) LED spreader lights

Lenco stainless steel trim tabs with auto retractor

Cockpit shade aft with stainless steel poles (stored below)

Self bailing cockpit Optional portside walk through door to transom Pullout swim ladder at aft door, retracts into transom (2) Racor fuel/water separators Stainless steel seacocks at above water outlets Bronze seacocks below waterline

## Interior

---

Sliding lockable acrylic door

(2) Teak steps to enter cabin

Vacuflush toilet

Hot and cold sink with removable sprayer for shower

Corian countertops

GFI outlet

Icom M604 VHF

Fusion MS – ip600 AM/FM Stereo

Storage Shelf

Blue LED lighting

(4) Stainless dead lights

Molded fiberglass liner

Deck drain Airmar transducer - mounts on interior of hull

## Electrical

---

12 Volt DC electric system(4) Group 31 batteries, (2) house batteries (new 4/20)

120 Volt AC electric system

30 Amp shore cord inlet

(3) 120 volt breaker protected circuits

Pro Mariner 12V 20 amp 3 bank battery charger (new 4/20)Battery parallel system

(4) Blue Seas electronic battery shut off switches

(15) 12 Volt breaker protected circuits

Overhead LED lights blue or white

Dometic holding tank gauge with pump out key

Analog volt meterGalvanic isolator30 Amp power cord

## Remarks

---

LIL HAP has led a pampered life as a yacht tender. Built in Miami under the supervision of the listing broker LIL HAP shows well inside and out.

September 2019 bottom paint and \$4,600.00 full engine service with excellent compression readings (results available).

LIL HAP is ready to go!

## History of Hours

---

Total time on the engines is 1244 hours. A download of the engine data by a Yamaha technician on July 3, 2019 showed the following load profile:

Engine speed less than 1000 RPM	561.4 hours	Engine speed 1000 – 2000 RPM	370.5
hours		Engine speed 2000 - 3000 RPM	63 hours
hours		Engine speed 3000 - 4000 RPM	143.3
hours		Engine speed 4000 - 5000 RPM	151.6 hours
hours		Engine speed 5000 - 6000 RPM	6
			1244 total hours

The technician stated that the cruise speed hours are very low and obviously the boat has spent

the majority of its life trolling or in other low speed operation.

---

## Notes on Builder

---

The Belzona difference is unique throughout the world of boat building. It represents a company with strong ideals and a definite view about how to approach things. Above all, however, it stands for the dream of one man and one company, who was not satisfied with simply following the trail set forth by others.

“I’ve been an avid boater since I was very young. I created Belzona Marine because I knew that boats could be better tailored to the way people really use them: fishing or scuba diving one day and taking the family to the local sandbar the next.” – Joel Swendsen, Owner and CEO

This philosophy provides us with the motivation we need to always do our best. We continually try to redefine our limits and set new standards for the industry, to never forget where we have come from and to set focus on what we do best. The difference between our boats and all others in today’s market is simple: we are here to make the best boats money can buy and they will always be built for the way you live.

With over 60 years of providing repair composites for the Marine industry, Belzona extended into the boat building industry. Belzona Marine is based on the same principles which have allowed Belzona to thrive and the owners of Belzona plan on providing customers with yet another company that will exceed industry standards and will be a lasting success. Hard work, dedication, revolutionary technologies, quality products, investments into research and development and excellent customer service are all values which drive Belzona Marine forward.

---

## Exclusions

---

While every effort was made to list all pertinent included equipment aboard LIL HAP, there are some personal belongings aboard. Prospective purchasers should assume any item not specifically mentioned herein will not convey at closing.

---

## Disclaimer

---

Specifications are provided for informational purposes only. Data was obtained from sources believed reliable but is not guaranteed by owner or brokers. Buyer assumes responsibility to verify all speeds, capacities, consumption’s and other measurements contained herein and otherwise provided and agrees to instruct his agents to confirm such details prior to purchase. Vessel is subject to prior sale, price and inventory changes and withdrawal from market without notice.

---

## Исключения

---

При продаже яхты исключаются личные вещи владельца.

---

## Отказ от ответственности

---

Компания предоставляет описание судна или яхты добросовестно, но не может гарантировать точность этой информации, а также не ручается за техническое состояние. Покупатель должен проинструктировать своих агентов или оценщиков исследовать представленную информацию более подробно, по собственному желанию. Продажа судна или яхты, изменение цены или снятие с продажи будет происходить без предварительного уведомления.

# ФОТОГРАФИИ

**Enclosed Windlass, S/S Anchor**



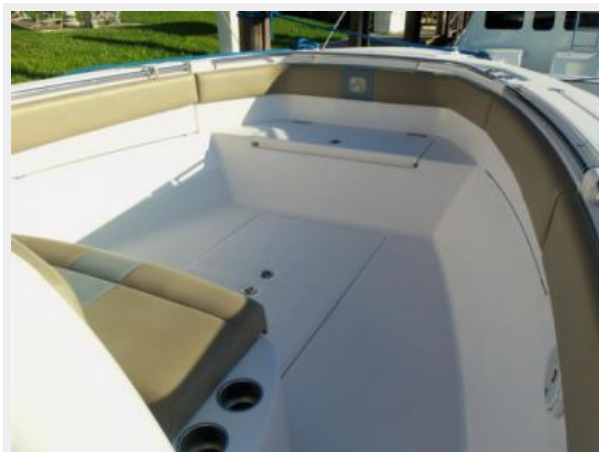
**Custom Tow Eye**



**Bow Seat**



**Bow Seating**



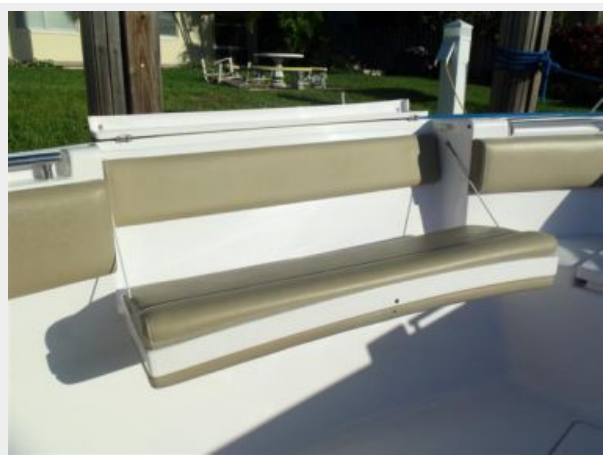
**Starboard Side Seat Up**



**Starboard Side Seat Down**



**Starboard Side Seat Down**



**Forward Seat Storage**



**Forward Under Deck Storage**



**Forward Well W/Macerator**



**One Piece Windshield**



**Forward Console Seating**





**Forward Console**



**Wide Walkways**



**Helm Area**



**Helm Seat Bolster Position**



**Helm Seat Position**



**Aft Hardtop**



**Helm Area**



**Helm**



**Helm**



**Helm Area**



**Helm Glovebox**



**Helm Area**





**Console Storage**



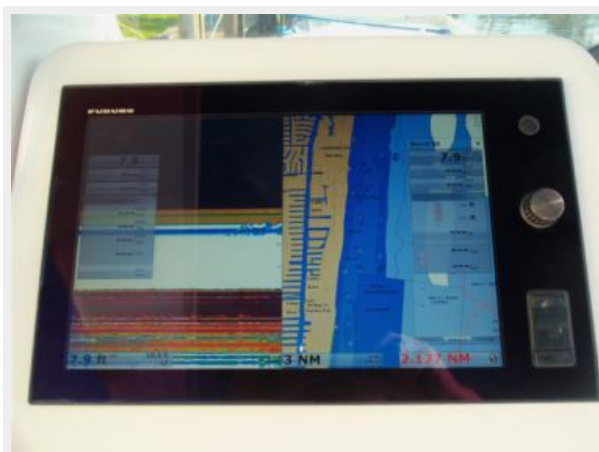
**Console Storage**



**Console Storage**



**Touchscreen Furuno**



**Yamaha Gauge**



**Hardtop Forward**



**Hardtop, Aft**



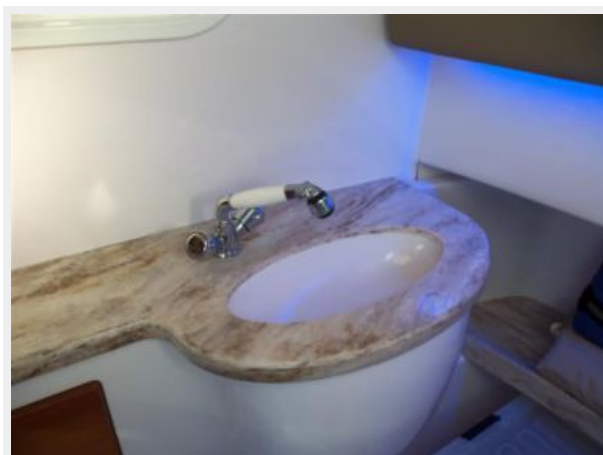
**Inside Console**



**Console VHF & Stereo**



**Console Sink/Shower**



**Console Electrical Panel**



**Console Dead Lights**



**Starboard Sliding Door**



**Starboard Sliding Door**



**Starboard Sliding Door**



**Sliding Door Closed**



**Telescoping Swim Ladder**



**Aft Seats Folded**





**Aft Seats Deployed**



**Optional Transom Door**



**Transom Live Well**



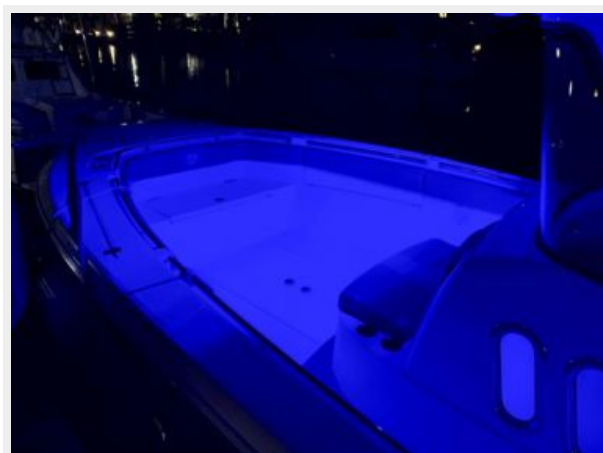
**Night Lighting**



**Night Lighting**



**Night Lighting**



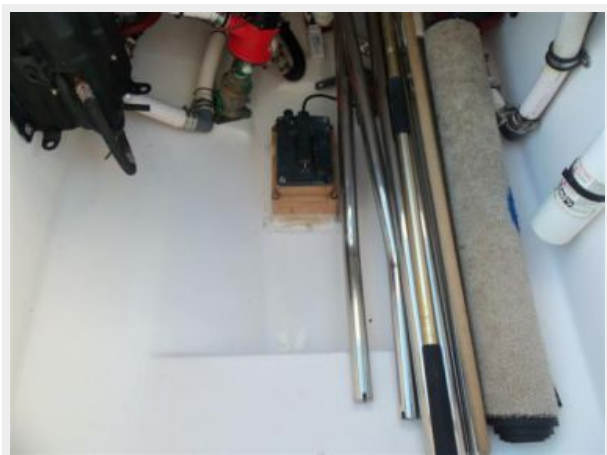
**Toilet System**



**Battery Compartment**



**Clean Bilge, Sunshade Supports**



**Engines Fully Above Water**



**Engines Always Covered**



**Transom**





**Tender**



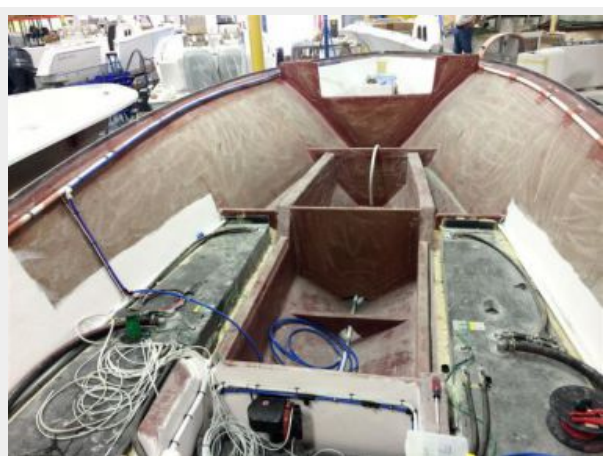
**Pampered Life**



**Great Side Entry Door**



**Jan 2014 Hull Construction Looking Forward**



**Jan 2014 Hull Construction Aft**

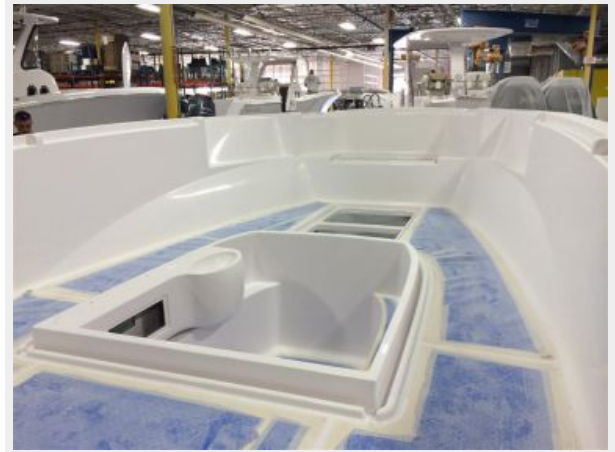




**Jan 2014 Beefy Transom Section**



**Jan 2014 Deck Piece Looking Forward**



**Jan 2014 Deck Piece Looking Aft**



# КОНТАКТЫ

---

Андрей Шестаков (Andrey Shestakov) – ведущий яхтенный брокер отдела продаж яхт и судов компании Shestakov Yacht Sales Inc. Официальный представитель Shestakov Yacht Sales Inc. для русскоговорящих клиентов в центральном офисе компании в Майами/Форт Лодердейл/Флорида/США.

## Контактная информация

---

Email: [andrey@shestakovyachtsales.com](mailto:andrey@shestakovyachtsales.com)

Web: [shestakovyachtsales.com](http://shestakovyachtsales.com)

## Телефоны

---

Краснодарский край: **+7(918)465-66-44**

США, Майами, Флорида: **+1(954)274-4435**

## Время работы

---

Понедельник – Суббота: **9:00 - 21:00**  
EDT

Воскресенье: **Закрито**

## Адрес

---



Harbour Towne Marina, 850 NE 3rd St,  
STE 213, Dania, FL 33004