

PHATSARA — SILKLINE



Builder: [SILKLINE](#)

Year Built: 2012

Model: Motor Yacht

Price: PRICE ON APPLICATION

Location: Thailand

LOA: 121' (36.88m)

Beam: 27.41

Min Draft: 7' 5" (2.26m)

Max Draft: 8' 2" (2.49m)

Cruise Speed: 20 Knots Kts. (23 MPH)

Max Speed: 25 Knots Kts. (29 MPH)

Our experienced yacht broker, Andrey Shestakov, will help you choose and buy a yacht that best suits your needs **PHATSARA — SILKLINE** from our catalogue. Presently, at Shestakov Yacht Sales Inc., we have a wide variety of yachts available on our sale's list. We also work in close contact with all the big yacht manufacturers from all over the world.

If you would like to buy a yacht **PHATSARA — SILKLINE** or would like help answering any questions concerning purchasing, selling or chartering a yacht, please call **+1(954)274-4435**

TABLE OF CONTENTS

TABLE OF CONTENTS	2
SPECIFICATIONS	3
Overview	3
Basic Information	4
Dimensions	4
Speed, Capacities and Weight	4
Accommodations	4
Hull and Deck Information	5
Engine Information	5
PHOTOS	6
CONTACTS	12
Contact details	12
Telephones	12
Office hours	12
Address	12

SPECIFICATIONS

Overview

The 121-foot (37m) power catamaran PHATSARA offers volume, range and speed that will open up a vast range of cruising possibilities.

At the time of her build, PHATSARA was the largest private power catamaran ever constructed. Designed by the world-leading multihull naval architects, Incat Crowther, with composite technologies built by High Modulus and instruction from Sikline International to create a high-tech, multi-purpose luxury yacht. As a catamaran, PHATSARA offers excellent natural stability, efficiency and a shallow draft, which allows her to travel and anchor to many idyllic secluded places. The luxury yacht has a maximum speed of 25-plus knots and a 2,000-nautical-mile range at nine to 10 knots.

The luxury power catamaran showcases a spacious interior that lends itself to comfortable, private passage making or commercial use, if desired. PHATSARA is able to accommodate 26 guests and 10 crew; eight guests are accommodated in three luxurious staterooms while 18 guests are accommodated in standard single berths in the lower deck hulls. She features a lovely main-deck master stateroom with a private cinema room, office, and an en-suite bath complete with a digital shower and Jacuzzi. Also on the main deck are two divine VIP staterooms each with a double bed and a Pullman.

PHATSARA's exterior decks are well versed, allowing for multi-purpose use. Her rooftop provides the ideal space for relaxing and enjoying the spectacular views that surround, while her Portuguese deck is the perfect spot to sit back while you cruise. The catamaran showcases two davits that allow for a 17-foot (5.2m) tender, Jet Skis or other water toys as well as a hydraulic platform aft — enabling easy use of the tender and toys. **Key Features**

- PHATSARA is a blank canvas that would lend herself to multiple applications of private or commercial use
- Long nautical mile range at low speeds or medium nautical mile range at high speeds— all with catamaran stability
- Commercial galley with high volume refrigeration and commercial ice maker
- Total berths of 36 —unlimited possibilities to carry guests and crew
- Construction and assembly in Thailand, the vessel was prefabricated by leading composite manufacturer, High Modulus who monitored construction for quality control
- Extensive entertaining and deck space
- Low engine and generator hours
- Has never been chartered and has had very limited use by the owner

Basic Information

Category: Motor Yacht

Sub Category: Motor Yacht

Model Year: 2012

Year Built: 2012

Country: Thailand

Dimensions

LOA: 121' (36.88mm)

Beam: 27.41

Min Draft: 7' 5" (2.26mm)

Max Draft: 8' 2" (2.49mm)

Speed, Capacities and Weight

Cruise Speed: 20 Knots Kts. (23 MPH)

Max Speed: 25 Knots Kts. (29 MPH)

Gross Tonnage: 265 Pounds

Water Capacity: 6000 Gallons

Fuel Capacity: 4226.75 Gal Gallons

Accommodations

Total Cabins: 9

Total Berths: 36

Total Heads: 5

Crew Berths: 6

Crew Heads: 1

Hull and Deck Information

Hull Material: Composite

Deck Material: Composite

Hull Configuration: Catamaran

Hull Color: White

Hull Designer: Incat Crowther

Exterior Designer: Incat Crowther

Interior Designer: Incat Crowther

Engine Information

Engines: 2

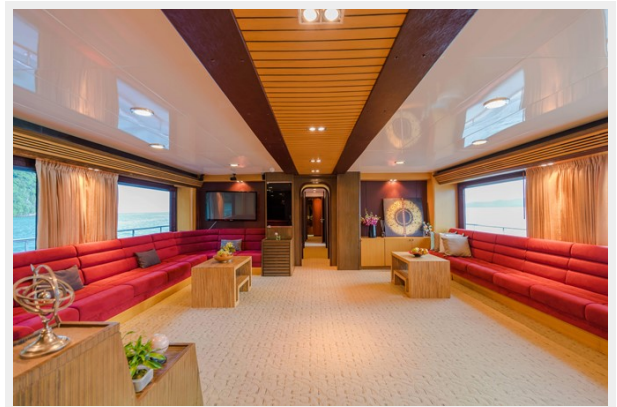
Manufacturer: Caterpillar

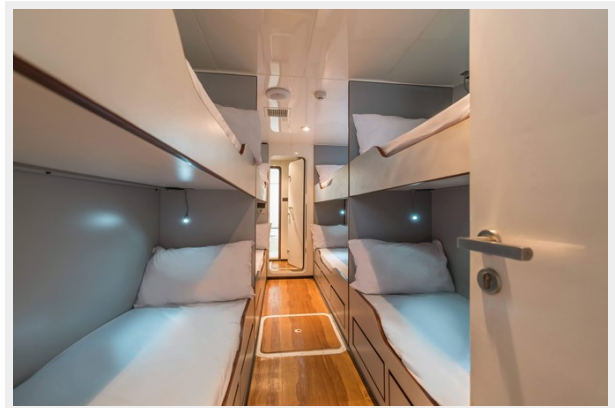
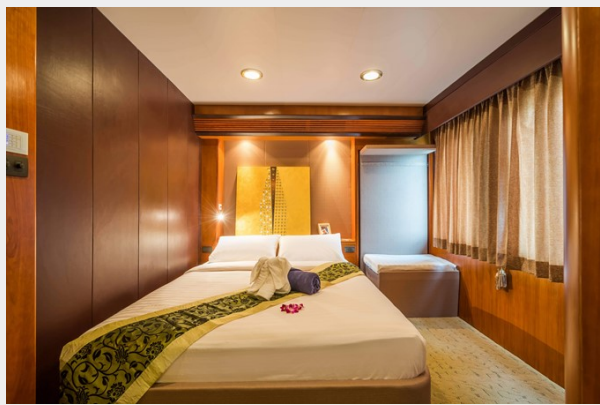
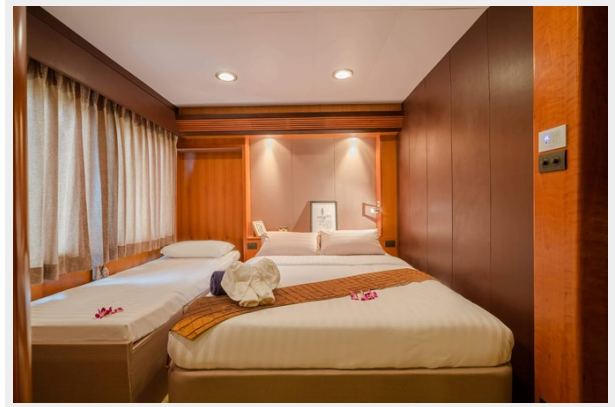
Engine Type: Inboard

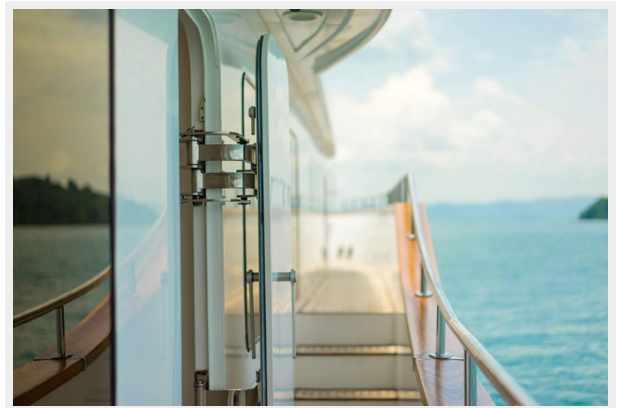
Fuel Type: Diesel

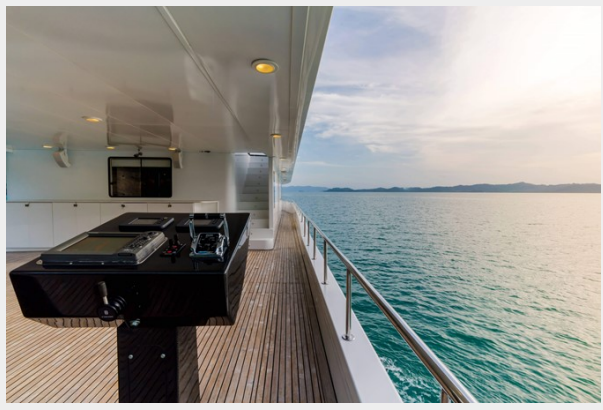
PHOTOS

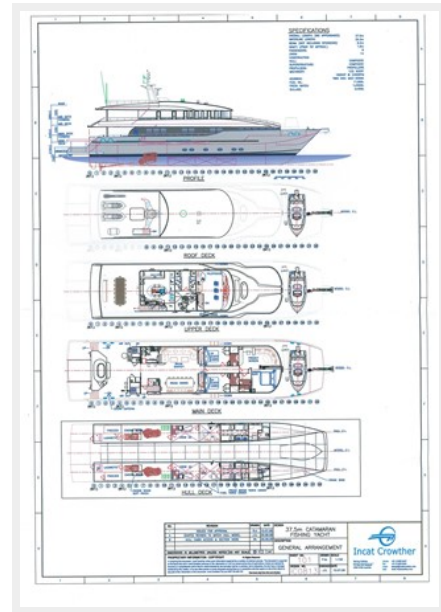












CONTACTS

Andrey Shestakov, leading yacht broker of the sales department of Shestakov Yacht Sales Inc. Shestakov Yacht Sales Inc., the official representative of the Miami/Fort Lauderdale FL headquarters.

Contact details

Email: andrey@shestakovyachtsales.com

Web: shestakovyachtsales.com/en/

Telephones

USA: +1(954)274-4435

Office hours

Monday – Saturday: **9:00 - 21:00** EDT

Sunday: **closed**

Address



Harbour Towne Marina, 850 NE 3rd St,
STE 213, Dania, FL 33004