

SOLSTICE — CAPE DORY



Builder: CAPE DORY

Year Built: 1987

Model: Cruising Sailboat

Price: PRICE ON APPLICATION

Location: United States

LOA: 30' 0" (9.14m)

Beam: 11' 5" (3.48m)

Max Draft: 3' 7" (1.09m)

Our experienced yacht broker, Andrey Shestakov, will help you choose and buy a yacht that best suits your needs **Solstice — CAPE DORY** from our catalogue. Presently, at Shestakov Yacht Sales Inc., we have a wide variety of yachts available on our sale's list. We also work in close contact with all the big yacht manufacturers from all over the world.

If you would like to buy a yacht **Solstice — CAPE DORY** or would like help answering any questions concerning purchasing, selling or chartering a yacht, please call **+1(954)274-4435**

TABLE OF CONTENTS

TABLE OF CONTENTS	2
SPECIFICATIONS	3
Overview	3
Basic Information	3
Dimensions	3
Speed, Capacities and Weight	3
Accommodations	3
Hull and Deck Information	4
Engine Information	4
DETAILED INFORMATION	5
Features	5
Exclusions	6
Disclaimer	6
PHOTOS	7
CONTACTS	19
Contact details	19
Telephones	19
Office hours	19
Address	19

SPECIFICATIONS

Overview

Sellers are going to spend some time in Europe and will not be sailing for two years. Just finished cruising for the winter 2019 season, she is just now in storage. The perfect island cruiser. One of only 47 examples of this sought-after design she sails and powers amazingly. With sail area equal to most pure sailboats her size she points, reaches and runs effortlessly. She looks great, too, A major refit in 2009 has been enhanced by constant, careful upgrades. *Refit in 2009, *Boat is outstanding and turn key, *Westerbeke 46 Diesel Fresh Water Cooled, *11' Dinghy w 15 HP Yamaha, *All LED Lighting, *Raymarine Auto Pilot, *GPS Chart Plotter

Basic Information

Category: Cruising Sailboat

Model Year: 1987

Year Built: 1987

Country: United States

Dimensions

LOA: 30' 0" (9.14m)

LWL: 26' 6" (8.08m)

Beam: 11' 5" (3.48m)

Max Draft: 3' 7" (1.09m)

Speed, Capacities and Weight

Displacement: 11500 Pounds

Water Capacity: 60 Gallons

Holding Tank: 40 Gallons

Fuel Capacity: 50 Gallons

Accommodations

Total Cabins: 1

Total Berths: 4

Total Heads: 1

Hull and Deck Information

Hull Material: Fiberglass

Hull Finish: Plastic

Engine Information

Engines: 1

Manufacturer: Westerbeke

Model: 46

Engine Type: Inboard

Fuel Type: Diesel

DETAILED INFORMATION

Features

BROKERS WALK THRU Cape Dory has a serious following among Sailors and Trawler enthusiasts alike. The 300 MS is no exception. This will be the 3rd 300 MS I have listed and will eventually sell. It is also the nicest one of the bunch, so I am hoping and thinking it will not be on the market long. Sellers have owned this boat for 11 years (3rd owners) and have cared for her wonderfully. You will be very hard pressed to find a nicer one, and I'm willing to bet it's the best on market. EQUIPMENT

Westerbeke W46 with rebuilt Hurth V-drive - Heat Exchanger Removed, Flushed, Brand New Zincs Installed and Re-installed. Smart Regulator Recent AGM Batteries Solar Panel with Blue Sky Controller Full Batten Main w/Macpack Roller jib/ ProFurl Frigoboat Keel Cooled System 100% LED lighting Raymarine 6000 below deck Autopilot Garmin GPS MAP454 Depth and Speed gauges 33 lb Bruce, Lofrans Royal manual windlass with 70 3/8 chain/120 nylon rode. Danforth 20 HT secondary anchor with chain/nylon rode. 2 speed Lewmar 40ST primary winches INTERIOR

•

Ultra suede cushions in dinette which converts to double bunk. Large comfortable v-berth forward. Well equipped galley with Force 10 3-burner gas stove. Recent head rebuild with holding tank allowing deck or overboard pump out. Poly water 60 gallon tank, aluminum 50 gal fuel. Bilge sniffer/LPG controller. 2 20lb fiberglass tanks. SAILS AND RELATED Sails: 120% Genoa 2010..recent re-stitching of Dacron sun screen. Full Batten Main is in good condition with recent service. 2 reef points with MacStack cover and lazy jacks. Brand New Standing Rigging 2009 - Very Good Condition Running Rigging is Fair to Good. BELOW WATER LINE Bottom: No Blisters.. 2009 Application of Interprotect 1000/2000 12 mils thickness. Ablative bottom paint Applied Fresh 2017. DINGHY 2008 11' AB Dinghy - No Leaks - Great Shape 15 HP Yamaha Outboard - 4 Stroke - Excellent TIMING OF UPGRADES / MAINTENANCE 2009 135 Watt Solar Panel Blue Sky Solar Regulator Automatic Battery Combiner Link 1000 Battery Monitor High Output Voltage Regulator LED Lighting Installation Everywhere - Inside and Out Imron Hull Painted "Solstice Blue" - Looks Fabulous New Stereo CD w Auxiliary and Boston Acoustics Salon Seating Rebuilt New Foam and Ultra Suede Fabric Force 10, 3 Burner propane Stove Frigoboat Refrigerator Raymarine ST6000 Auto Pilot w Linear Drive 2010 Icom VHF w High Output Mast Antenea Garmin GPS Chart Plotter w Bahamas Blue Chart Card Iota 30 Amp Charger 2011 New Deck Awlgrip "Sandstone" 2012 Rebuilt Transmission 2014 New Alternator 2015 New Fuel Injector Pump New Fiberglass Propane Tanks 2017 Manual Lofrans Windlass SPARE PARTS ENGINE: Engine Belts Starter Alternator Water Pump Parts Kit Injector Electrical Fuel Pump Major Gasket Kit Racor Fuel Filters HEAD COMPARTMENT: Pumps Joker Valves Plastic Pieces OB ENGINE: Dog Ears Pull Cord Oil Filter Fuel Line and Bulb Pump FRIGOBOAT Filter / Drier 2ea. Thermostats PAINTS AND VARNISHES Original Imron Sandstone Awlgrip Wood Finishes - Interior and Exterior OTHER: Assorted Hoses

Assorted LED Bulbs DISCLOSED Masthead Anchor Light LED Bulb not Functioning
Windshield Wiper Motor Inoperable Masthead Windex Is Missing Reflector Head Shower
Currently Disconnected

Exclusions

Owner's personal belongings.

Disclaimer

The Company offers the details of this vessel or yacht in good faith but cannot guarantee or warrant the accuracy of this information nor warrant the condition of the vessel. A buyer should instruct his representatives, agents, or his surveyors, to investigate such details as the buyer desires validated. This vessel or yacht is offered subject to prior sale, price change, or withdrawal without notice.

PHOTOS



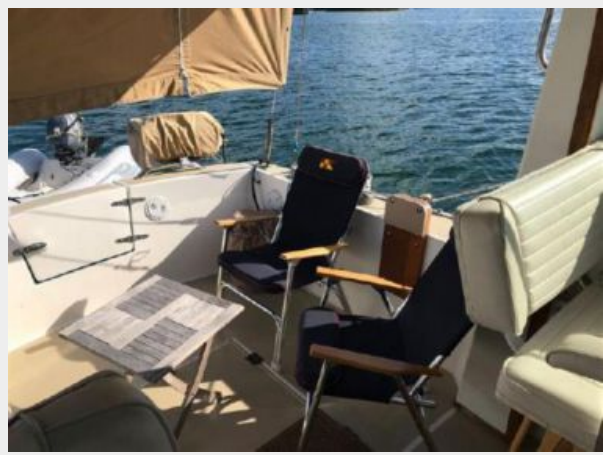


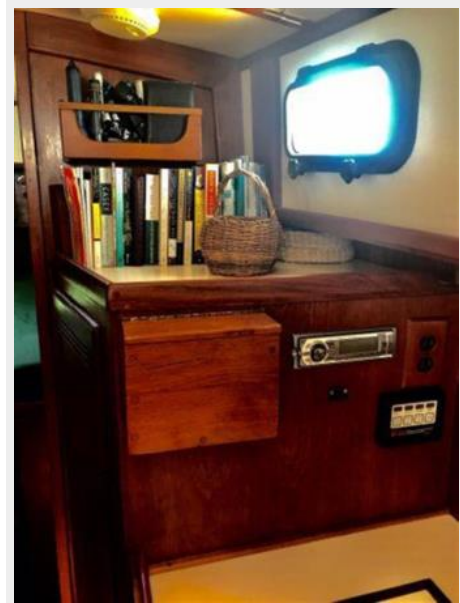
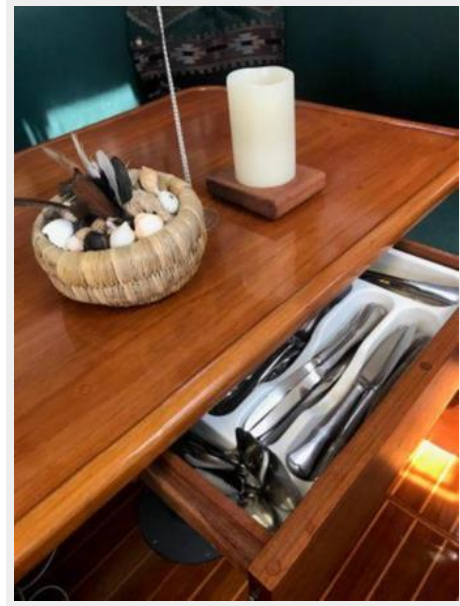


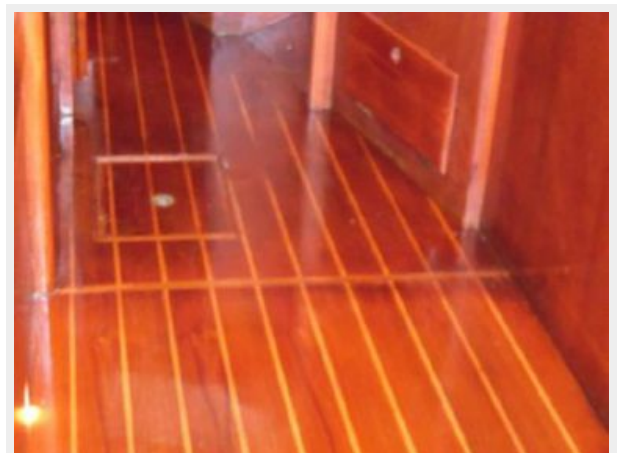
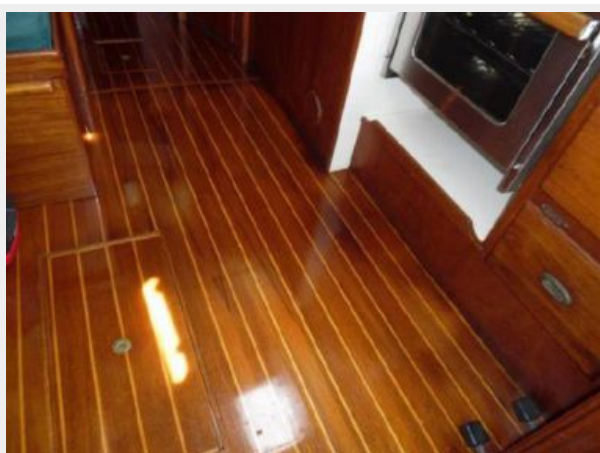




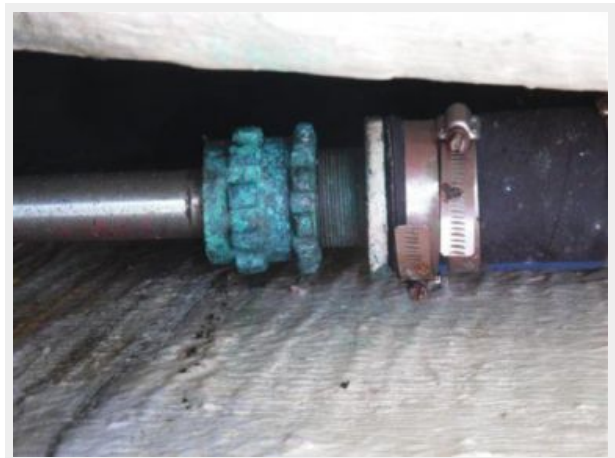














CONTACTS

Andrey Shestakov, leading yacht broker of the sales department of Shestakov Yacht Sales Inc. Shestakov Yacht Sales Inc., the official representative of the Miami/Fort Lauderdale FL headquarters.

Contact details

Email: andrey@shestakovyachtsales.com

Web: shestakovyachtsales.com/en/

Telephones

USA: +1(954)274-4435

Office hours

Monday – Saturday: **9:00 - 21:00** EDT

Sunday: **closed**

Address



Harbour Towne Marina, 850 NE 3rd St,
STE 213, Dania, FL 33004