

HAPPY DAZE — MAINSHIP



Builder: MAINSHIP

Year Built: 1995

Model: Cruiser

Price: PRICE ON APPLICATION

Location: United States

LOA: 31' 0" (9.45m)

Beam: 11' 10" (3.61m)

Max Draft: 2' 0" (0.61m)

Our experienced yacht broker, Andrey Shestakov, will help you choose and buy a yacht that best suits your needs **Happy Daze — MAINSHIP** from our catalogue. Presently, at Shestakov Yacht Sales Inc., we have a wide variety of yachts available on our sale's list. We also work in close contact with all the big yacht manufacturers from all over the world.

If you would like to buy a yacht **Happy Daze — MAINSHIP** or would like help answering any questions concerning purchasing, selling or chartering a yacht, please call **+1(954)274-4435**

TABLE OF CONTENTS

| | |
|------------------------------|---|
| TABLE OF CONTENTS | 2 |
| SPECIFICATIONS | 3 |
| Overview | 3 |
| Basic Information | 3 |
| Dimensions | 3 |
| Speed, Capacities and Weight | 3 |
| Accommodations | 3 |
| Hull and Deck Information | 4 |
| Engine Information | 4 |
| PHOTOS | 5 |
| CONTACTS | 9 |
| Contact details | 9 |
| Telephones | 9 |
| Office hours | 9 |
| Address | 9 |

SPECIFICATIONS

Overview

This Beautiful Mainship Bridge boat offers a spacious and comfortable layout. With twin Marine Power 350HP 454's with less than 700 hours, A/C and a Generator. She's worth taking a look at!!! Boat Name Happy Daze Dimensions LOA: 31 ft 0 in Beam: 11 ft 10 in Maximum Draft: 2 ft 0 in Dry Weight: 16000 lbs Engines Engine 1: Engine Brand: Marine Power Year Built: 1995 Engine Model: 454's Engine Type: Inboard Engine/Fuel Type: Gas/Petrol Location: Starboard Engine Hours: 675 Engine Power: 350 HP Engine 2: Engine Brand: Marine Power Year Built: 1995 Engine Model: 454's Engine Type: Inboard Engine/Fuel Type: Gas/Petrol Location: Port Engine Hours: 675 Engine Power: 350 HP Tanks Fresh Water Tanks: (50 Gallons) Fuel Tanks: (200 Gallons) Holding Tanks: (20 Gallons) Accommodations Number of single berths: 2 Number of double berths: 1 Number of heads: 1 Electronics Cockpit speakers Autopilot GPS Depthsounder Compass Inside Equipment Electric bilge pump Microwave oven Heating Marine head Hot water Air conditioning Refrigerator Electrical Equipment Shore power inlet Generator Outside Equipment/Extras Cockpit cushions Swimming ladder Hydraulic windlass

Basic Information

Category: Cruiser

Model Year: 1995

Year Built: 1995

Country: United States

Dimensions

LOA: 31' 0" (9.45m)

Beam: 11' 10" (3.61m)

Max Draft: 2' 0" (0.61m)

Speed, Capacities and Weight

Displacement: 16000 Pounds

Accommodations

Total Cabins: 2

Total Heads: 1

Hull and Deck Information

Hull Material: Fiberglass

Engine Information

Engines: 2

Manufacturer: Marine Power

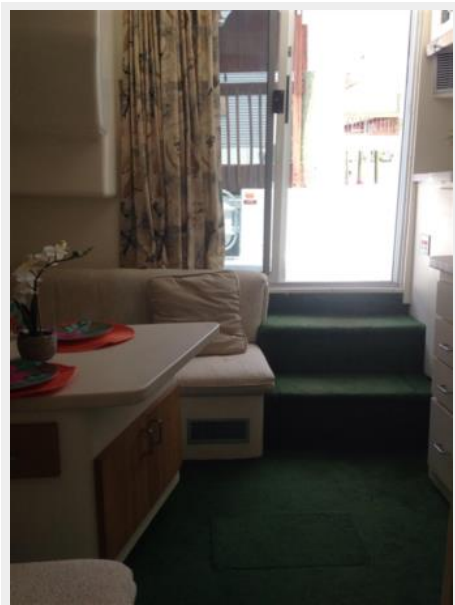
Model: 454's

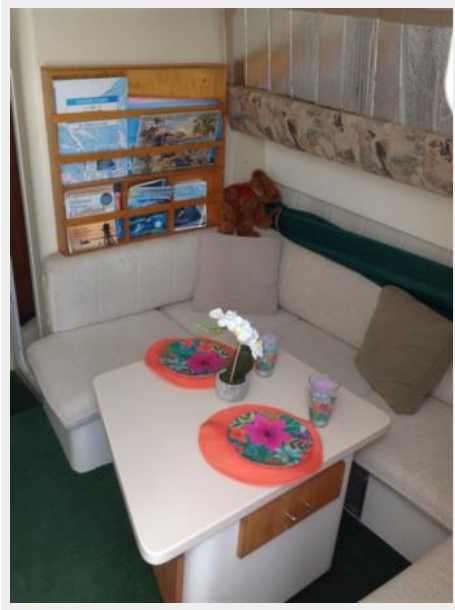
Engine Type: Inboard

Fuel Type: Gas/Petrol

PHOTOS









CONTACTS

Andrey Shestakov, leading yacht broker of the sales department of Shestakov Yacht Sales Inc. Shestakov Yacht Sales Inc., the official representative of the Miami/Fort Lauderdale FL headquarters.

Contact details

Email: andrey@shestakovyachtsales.com

Web: shestakovyachtsales.com/en/

Telephones

USA: +1(954)274-4435

Office hours

Monday – Saturday: **9:00 - 21:00** EDT

Sunday: **closed**

Address



Harbour Towne Marina, 850 NE 3rd St,
STE 213, Dania, FL 33004