

SABINE — ISLAND TRADER



Судостроитель: ISLAND TRADER

Год постройки: 1979

Модель: Крейсерская яхта

Цена: ЦЕНА ЯХТЫ ПО ЗАПРОСУ

Местонахождение: United States

Длина общая: 40' 3" (12.27m)

Ширина: 12' 0" (3.66m)

Мин. осадка: 6' 0" (1.83m)

Купить Sabine — ISLAND TRADER а также выбрать подходящую вам яхту из нашего каталога яхт вам поможет опытный яхтенный брокер Андрей Шестаков. На сегодняшний день компания Shestakov Yacht Sales Inc. имеет большое количество яхт в собственном списке продаж, а также тесно сотрудничает со всеми крупными яхтенными производителями по всему миру.

Для того чтобы купить яхту Sabine — ISLAND TRADER а также проконсультироваться по любому вопросу связанному с покупкой, продажей, чартером яхт позвоните по телефону **+7(918)465-66-44**.

ОГЛАВЛЕНИЕ

ОГЛАВЛЕНИЕ	2
ХАРАКТЕРИСТИКИ	4
Обзор	4
Основная информация	5
Размеры	5
Скорость, вместимость и масса	5
Размещение	5
Корпус и палуба	5
Информация о двигателе	6
ПОДРОБНОЕ ОПИСАНИЕ	7
Accommodations	7
Galley	7
Electrical Equipment	8
Electronics & Navigation	8
Engine & Mechanical	8
Hull & Deck	9
Sails and Rigging	9
Other	10
Owner's Remarks	10
Исключения	11
Отказ от ответственности	11
ФОТОГРАФИИ	12
forward head	18
forward head	18
New cabin sole and compression post footing	19
galley	19
Nav station	19
Aft head	20

Aft Cabin	20
Aft head	20
Aft Head	20
КОНТАКТЫ	24
Контактная информация	24
Телефоны	24
Время работы	24
Адрес	24

ХАРАКТЕРИСТИКИ

Обзор

HUGE PRICE DROP. OWNER'S NEW BOAT HAS ARRIVED. GREAT OPPORTUNITY.

Sabine is an Island Trader 41' Center Cockpit Ketch. She turns heads with her classic look and character of a William Garden design, offers the charm and comfort of a hand-crafted teak interior, and a solid, seaworthy hull that will take you anywhere.

Sabine is a rare find. Her current owners have been excellent caretakers and have lavished *Sabine* with constant updates and improvements over their tenure. The lucky next owner will enjoy the benefits of their hard work and expense without having to tackle some of the typical problems associated with older boats of this type. Her extensive updating and maintenance regimen make *Sabine* the nicest Island Trader 41 available in quite some time. Here is a sampling of some key updates under their ownership.

- Teak decking removed, core repaired, decks professionally glassed and awlgripped.
- Original engine replaced with a 56hp Yanmar diesel
- Potable water, diesel and holding tanks replaced
- Hull professionally painted
- Bottom stripped and barrier-coated
- Standing rigging replaced
- Sails and jib furler replaced
- Electronics updated
- Full canvas enclosure added
- Cabin sole replaced
- Winches replaced with Lewmar dual speed self-tailing winches
- Compression post footing rebuilt to stronger than new
- Countless electrical and plumbing updates and additions
- Comes with custom made Fairclough cover system for winter storage
- and much more. See full specs for additional details.

Sabine is easily single handed, handles heavy seas with ease, and is an ideal platform for a cruising couple. You can learn more about *Sabine* and her story at followsabine.com.

Основная информация

Тип судна: Крейсерская яхта

Подкатегория: Крейсерский кеч

Модельный год: 1979

Год постройки: 1979

Страна: United States

Номер регистрации в береговой охране: 957657

Размеры

Длина общая: 40' 3" (12.27m)

Длина по ватерлинии: 32' 0" (9.75m)

Ширина: 12' 0" (3.66m)

Мин. осадка: 6' 0" (1.83m)

Скорость, вместимость и масса

Водоизмещение: 29000 Pounds

Вместимость воды: 160 Gallons

Вместимость сточного бака: 30 Gallons

Объем топливного бака: 85 Gallons

Размещение

Всего кают: 2

Корпус и палуба

Материал корпуса: Fiberglass

Материал палубы: Fiberglass Sandwich

Комплектация корпуса: Full Displacement

Отделка корпуса: Plastic

Дизайнер корпуса: William Garden

Информация о двигателе

Двигатели: 1

Производитель: Yanmar

Модель: 4JH3E

Тип двигателя: Inboard

Тип топлива: Diesel

ПОДРОБНОЕ ОПИСАНИЕ

Accommodations

Sabine features a beautifully hand-crafted teak interior with two private cabins, a large main saloon, full galley, spacious engine compartment, two heads, and massive storage capacity. LED lighting throughout and plenty of light and air. Cabin sole replaced with teak & holly.

Forward Cabin: Large V-berth forward with storage shelving along each side and drawers underneath. There is a hanging locker and other storage compartments just aft of the berth. Two new overhead hatches and two opening ports let in plenty of light and air. The chain locker is forward of the berth.

Forward Head: Located aft of the forward cabin to port, the forward head was converted to a dedicated full-standing shower with tile walls, and a vanity forward. There is a double shelf locker behind and a locker beneath the sink. **Main Cabin:** L-shaped dinette to port with a settee to starboard that pulls out to form a double berth. The large drop-leaf center-line dining table has a sliding top panel to access storage inside the table. There are locker spaces behind both settees as well as double lockers above. Four opening ports and an overhead butterfly hatch let in plenty of light & air. New cushion upholstery in **2017**.

Nav Station: Just aft of the main cabin to port is a full-size Nav Station featuring a pull-out desk and storage lockers above and below.

Galley: The Galley is located aft of the main saloon along the starboard walk-way leading into the aft cabin. Storage is located in lockers behind the entire length of the galley as well as lockers above the engine room. There is access to starboard side of the engine in the galley area

Aft Cabin: Features a large double berth lying athwartships. An overhead hatch, four large windows and two opening ports provide light and ventilation. Storage includes a hanging locker forward and two sets of double door lockers on each side of the cabin, with additional storage aft of the bunk, and under. Ensuite head to port.

Aft Head: The aft head has been completely refurbished and shows nearly new. It is accessed from the aft cabin port side, with new solid teak flooring, ample cabinet storage, and updated modern fixtures. Access panel to port side of engine. New 30g holding tank installed.

Galley

Galley located to starboard at the base of the companionway, with good access to both the cockpit and main saloon.

- Isotherm 20g hot water heater (Engine and electrically driven)

- High-output Impeller 40psi Water Pump w/ inline bladder
- Inline carbon water filtration system
- (2) Custom made poly 80G water tanks (160 gallon total capacity)
- Frigoboat keel-cooled refrigeration
- NEW Force (**2019**) 10 LPG stove & oven (uninstalled) to replace current 3-burner stove
- Microwave oven

Electrical Equipment

- 400 Watts Renogy Monocrystalline Flexible solar panels
- Rover Li 40 AMP MPPT Solar charge Controller
- (6) 120Ah Deep Cycle AGM Marine House Bank Batteries (new in **2018**)
- (1) AGM Starting Battery (New **2019**)
- Heart Interface 5000 Inverter
- Heart Interface Link 2000 battery monitor
- 30 amp shore power system w/ 110 outlets throughout the boat
- LED lighting throughout the boat
- Electric trumpet horn
- LED spreader lights

Electronics & Navigation

- Raymarine C-Series Radar
- Raymarine C120 chartplotter at helm
- WAAS Differential Marine GPS
- TackTick Wind & Tri-Data instruments at helm
- Standard Horizon Matrix AIS/GPS Enabled Marine VHF with cockpit remote
- Autohelm ST6000 Autopilot
- Fusion Bluetooth Audio System

Engine & Mechanical

- Yanmar 56hp 4JH3E Marine Diesel Engine (**2003**) with 1432 hours
- New Engine Mounts
- Dripless shaft seal
- Balmar 120 amp High Output Alternator
- Balmar Serpentine Belt System Upgrade
- RACOR 200micron Fuel / Water Separator
- 85 Gallon custom made aluminum fuel tanks (installed **2010**)
- Fixed 3-blade prop in aperature
- Hydraulic steering refurbished

- Engine spare parts & spare zincs

Hull & Deck

Hull is hand-laid solid fiberglass with a full keel and attached rudder. Ballast is encapsulated in the keel and believed to be iron set in epoxy. Deck is fiberglass with balsa core. Original teak overlay was removed and the deck was re-cored and glassed over in 2004. Deck and Hull have been professionally awlgripped in 2008

- Deck features high bulwarks for safety
- New Lewmar deck hatches to replace original wood-framed hatches
- Butterfly hatch over main cabin
- Side-mount swim ladder
- New teak seating in cockpit
- Dodger & Bimini with full canvas enclosure for cockpit
- Folding wheel to free up cockpit space at anchor
- Cockpit cushions
- Cockpit speakers
- Custom Canvas covers for hatches and teak hand rails
- F/W shower on aft deck
- Custom dinghy davits
- Taffrail completely removed, re-sealed and re-installed, **2015**
- Magma Catalina Grill

Ground Tackle:

- Lofrans Tigress powered anchor windlass (chain and rope capable) with remote
- bowsprit with integral double rollers
- 45 lb. CQR Anchor w/ 300' of chain, 35 lb. CQR on second roller
- Spare Danforth Anchor

Sails and Rigging

Sabine has a ketch rig with deck-stepped aluminum masts

- Lewmar dual speed winches (new **2017**)
- New Selden halyard winches on mast (**2018**)
- Fully battened main sail (New **2012**)
- Dutchman flaking system
- Schaefer Roller Furling Jib (New **2013**)
- Battened Mizzen Sail (New **2014**)
- Lewmar low-friction mast track sail car system
- Aluminum Whisker Pole

- Boom vang
- Masthead Windex wind indicator
- Main Mast Compression Post keel support was completely redone and stronger than new.

Other

- Adequate fenders & mooring lines
- Custom Fairclough Canvas Boat Cover for Winter storage
- Ship's Bell
- Ship's Clock
- Two Sport-a-Seats
- Misc. spare parts
- Life Jackets
- Lifebuoy throwable safety device
- Personal items not included some of which may appear in pictures.

Owner's Remarks

Sabine is an Island Trader 41' full-keeled cruising ketch that was built in the Tai Chao shipyard in Formosa (Taiwan). These boats weren't built on assembly lines, they were put together by craftsman that loved their work. Just look below at the hand carved doors and you'll understand how each of these boats is totally unique.

When we found her, she was named "Tara Vana" (Tahitian for "Crazy Man") and she needed a lot of TLC. However, over the past 18 years we've put a lot of love into her. Many hours of paint, sanding, varnish, and mechanical work have resulted in a boat that could take you anywhere your heart desires.

Although she spent many years of her life in the south, Sabine is a boat that is perfect for the Northeast. Like a lot of boats from the Tai Chao yard, she's built like a tank! With her full keel and keel hung rudder, you won't have to worry if you accidentally ground the boat. Didn't see that lobster pot? No worries! That line will run along the bottom of the keel and then pop out the back. Since the shaft and prop are protected, there's no chance of snagging.

At the water line, the fiberglass is almost 2" thick in places, making her as strong a boat as you will find. Over the years, we've opted for larger than needed rigging / furlers / winches so that we never have to worry about load failures. We wanted a boat that was strong and would get us to our destination safely. In that regard, Sabine has never let us down.

Sabine is looking for the right owners. As an older boat she will have regular maintenance that's needed. Right at the moment, she needs the varnish on her rails attended to. However, if you are willing to put in the love, she will return the favor. Sabine is always the bell of the ball in any anchorage or port. With her long bowsprit, classic lines, and wineglass transom she turns heads

everywhere she goes.

We've loved this boat since the day we saw her tied up in a mooring field in Noank, CT. We picked up the mooring next to her, and for two days we stared at the for-sale sign. 2 months later, we sailed her home. Sabine deserves someone that will love her as much as we do and who craves the adventure and satisfaction that comes from being the custodian of a boat that instantly reminds you that we are all bound to the sea.

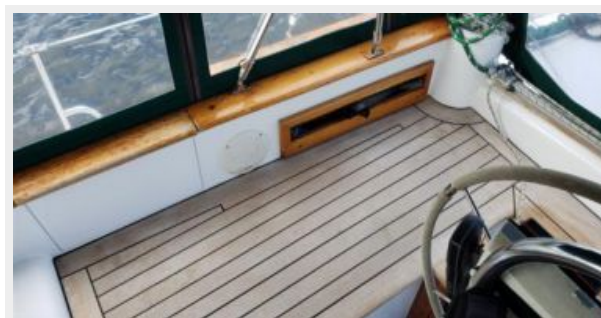
Исключения

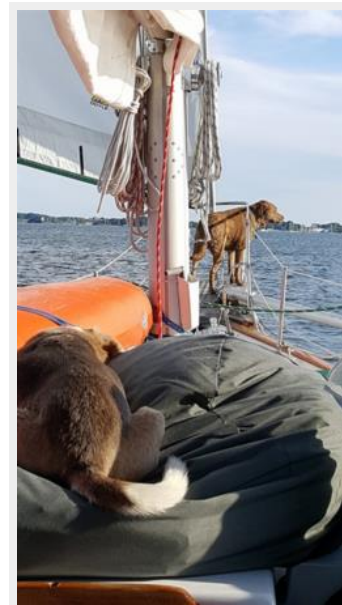
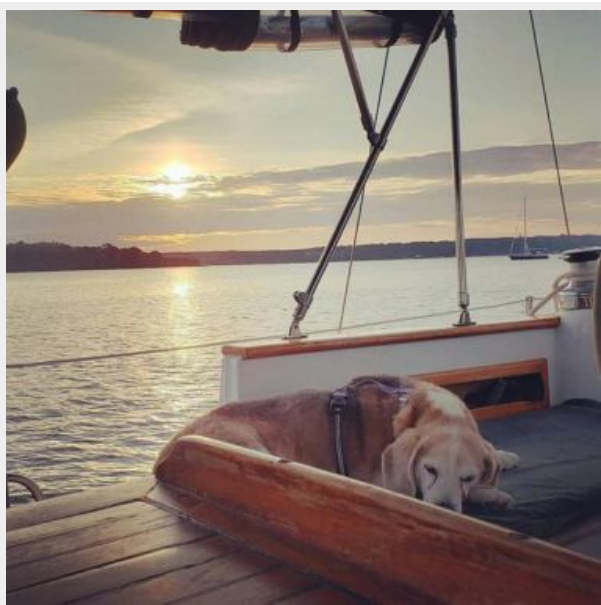
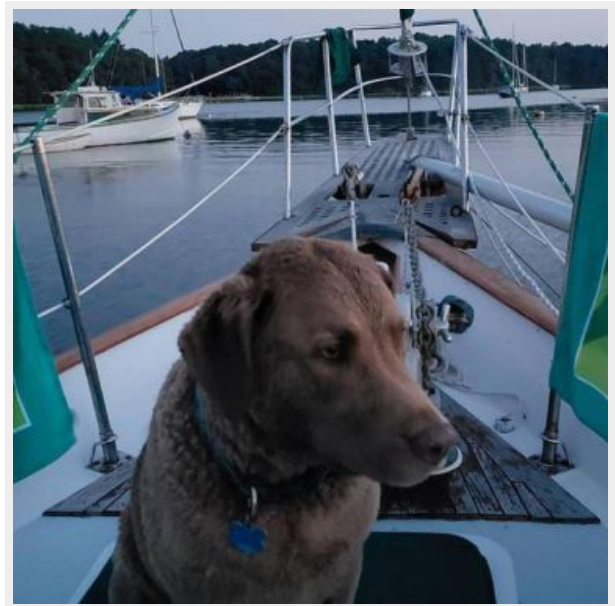
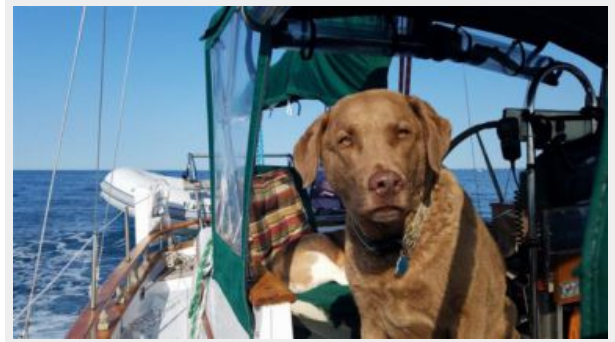
При продаже яхты исключаются личные вещи владельца.

Отказ от ответственности

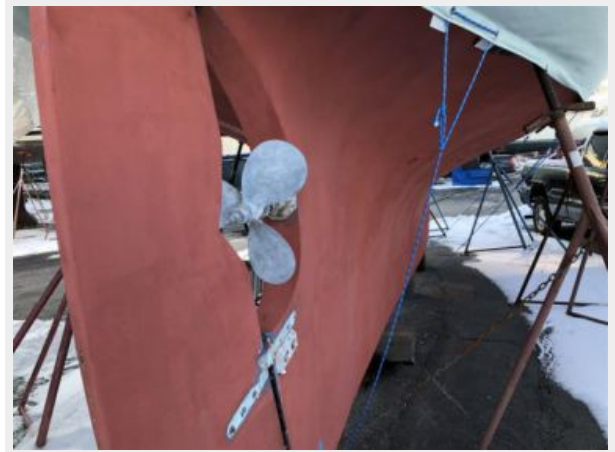
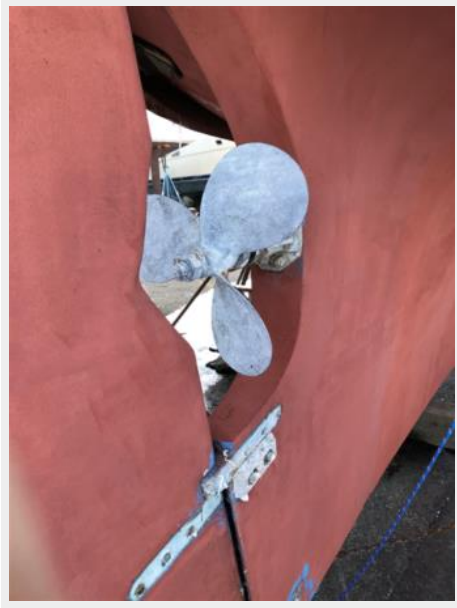
Компания предоставляет описание судна или яхты добросовестно, но не может гарантировать точность этой информации, а также не ручается за техническое состояние. Покупатель должен проинструктировать своих агентов или оценщиков исследовать представленную информацию более подробно, по собственному желанию. Продажа судна или яхты, изменение цены или снятие с продажи будет происходить без предварительного уведомления.

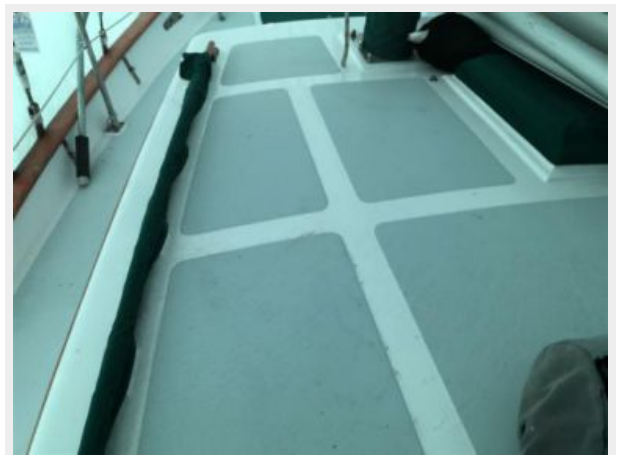
ФОТОГРАФИИ

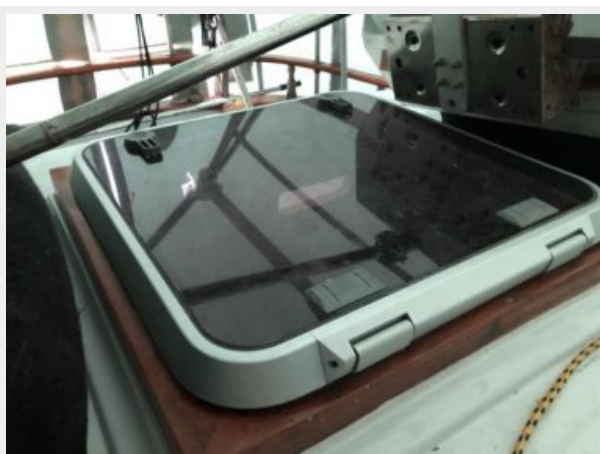
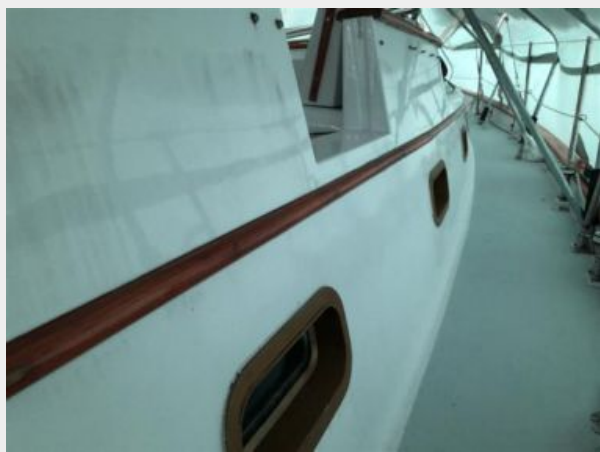














forward head



forward head



New cabin sole and compression post footing



galley



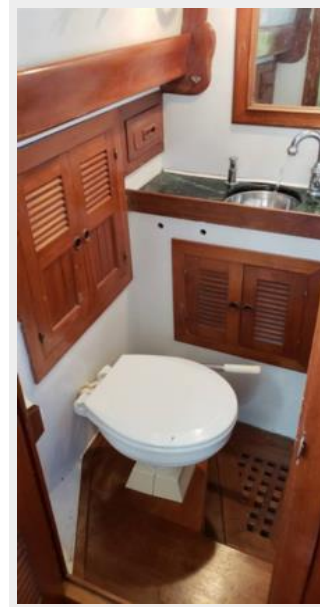
Nav station



Aft Cabin



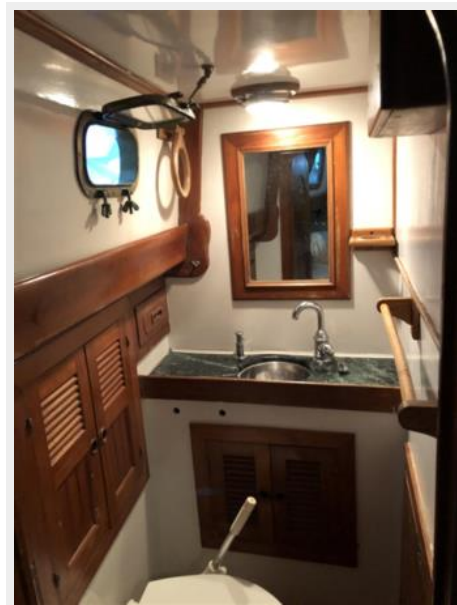
Aft head

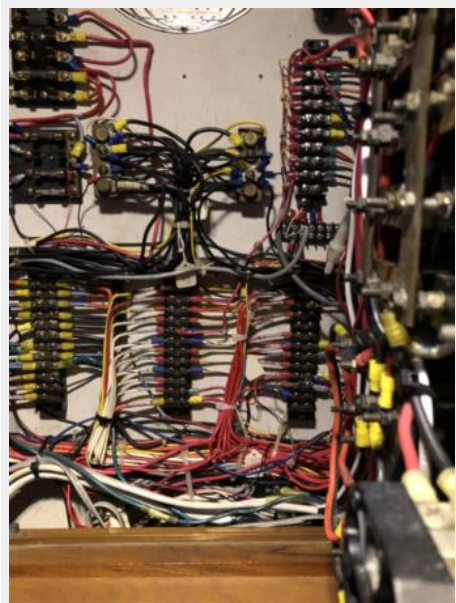


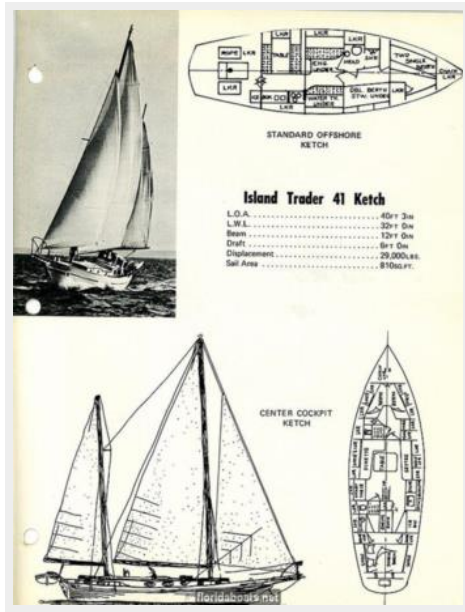
Aft head

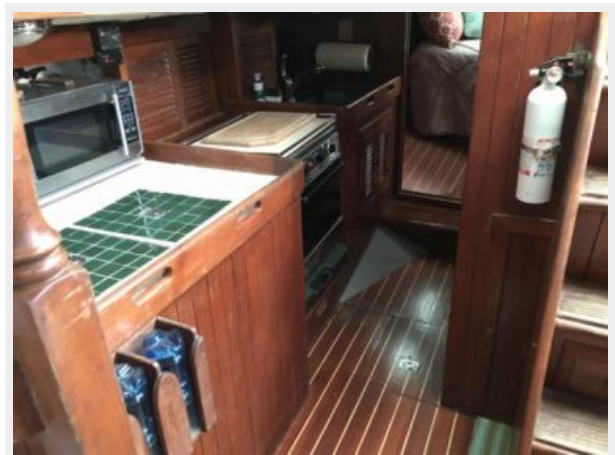


Aft Head









КОНТАКТЫ

Андрей Шестаков (Andrey Shestakov) – ведущий яхтенный брокер отдела продаж яхт и судов компании Shestakov Yacht Sales Inc. Официальный представитель Shestakov Yacht Sales Inc. для русскоговорящих клиентов в центральном офисе компании в Майами/Форт Лодердейл/Флорида/США.

Контактная информация

Email: andrey@shestakovyachtsales.com

Web: shestakovyachtsales.com

Телефоны

Краснодарский край: **+7(918)465-66-44**

США, Майами, Флорида: **+1(954)274-4435**

Время работы

Понедельник – Суббота: **9:00 - 21:00**
EDT

Воскресенье: **Закрето**

Адрес



Harbour Towne Marina, 850 NE 3rd St,
STE 213, Dania, FL 33004