

## SOUTHERN STAR — WESTPORT



**Судостроитель:** WESTPORT

**Год постройки:** 2006

**Модель:** Моторная яхта

**Цена:** **ЦЕНА ЯХТЫ ПО ЗАПРОСУ**

**Местонахождение:** United States

**Длина общая:** 112' 0" (34.14m)

**Ширина:** 23' 6" (7.16m)

**Мин. осадка:** 5' 6" (1.68m)

**Крейс. скорость:** 22 Kts. (25 MPH)

**Макс. скорость:** 26 Kts. (30 MPH)

Купить **SOUTHERN STAR — WESTPORT** а также выбрать подходящую вам яхту из нашего каталога яхт вам поможет опытный яхтенный брокер Андрей Шестаков. На сегодняшний день компания **Shestakov Yacht Sales Inc.** имеет большое количество яхт в собственном списке продаж, а также тесно сотрудничает со всеми крупными яхтенными производителями по всему миру.

Для того чтобы купить яхту **SOUTHERN STAR — WESTPORT** а также проконсультироваться по любому вопросу связанному с покупкой, продажей, чартером яхт позвоните по телефону **+7(918)465-66-44**.

# ОГЛАВЛЕНИЕ

ОГЛАВЛЕНИЕ	2
ХАРАКТЕРИСТИКИ	4
Обзор	4
Основная информация	4
Размеры	4
Скорость, вместимость и масса	4
Размещение	5
Корпус и палуба	5
Информация о двигателе	5
ПОДРОБНОЕ ОПИСАНИЕ	6
Accommodations	6
Main Salon & Dining Area	6
Galley & Laundry Equipment	7
Master Stateroom	7
VIP Guest Stateroom, Forward	8
Queen Guest Stateroom, Port	8
Queen Guest Stateroom, Starboard	9
Captain & Crew Quarters	9
Pilothouse Equipment	10
Flybridge Equipment & Tender	10
Electronics & Navigational Equipment	11
Aft Deck & Swim Platform	12
Deck Equipment	12
Electrical Equipment	13
Engine & Mechanical Equipment	13
2018 Upgrades/Improvements	14
Exclusions	14
Исключения	14

---

Отказ от ответственности	14
ФОТОГРАФИИ	16
КОНТАКТЫ	25
Контактная информация	25
Телефоны	25
Время работы	25
Адрес	25

---

# ХАРАКТЕРИСТИКИ

## Обзор

## Основная информация

<b>Тип судна:</b> Моторная яхта	<b>Подкатегория:</b> Raised Pilothouse
<b>Модельный год:</b> 2006	<b>Год постройки:</b> 2006
<b>Страна:</b> United States	<b>Верх:</b> Hardtop
<b>Открытая палуба мостика:</b> Да	

## Размеры

<b>Длина общая:</b> 112' 0" (34.14m)	<b>Длина по ватерлинии:</b> 112' 0" (34.14m)
<b>Длина палубы:</b> 112' 0" (34.14m)	<b>Ширина:</b> 23' 6" (7.16m)
<b>Мин. осадка:</b> 5' 6" (1.68m)	<b>Длина привального бруса:</b> 112' 0" (34.14m)

## Скорость, вместимость и масса

<b>Крейс. скорость:</b> 22 Kts. (25 MPH)	<b>Макс. скорость:</b> 26 Kts. (30 MPH)
<b>Водоизмещение:</b> 275000 Pounds	<b>Вместимость воды:</b> 1000 Gallons
<b>Вместимость сточного бака:</b> 600 Gallons	<b>Объем топливного бака:</b> 5480 Gallons

## Размещение

---

**Всего кают:** 4

**Спальные места:** 8

**Всего ком. состава:** 9

**Каюта капитана:** Да

**Каюты экипажа:** 3

**Койки экипажа:** 4

**Спальных мест экипажа:** 8

**Комм. состав экипажа:** 8

## Корпус и палуба

---

**Материал корпуса:** Fiberglass

**Цвет корпуса:** Awlgrip White

**Дизайнер корпуса:** Westport

**Дизайнер экстерьера:** Westport/Taylor Olson

**Дизайнер интерьера:** Westport

## Информация о двигателе

---

**Двигатели:** 2

**Производитель:** Detroit Diesel/MTU

**Модель:** 16V-2000's

**Тип двигателя:** Inboard

**Тип топлива:** Diesel

---

# ПОДРОБНОЕ ОПИСАНИЕ

---

## Accommodations

---

SOUTHERN STAR accommodates up to eight owners/guests in four ensuite staterooms, each with private baths. Crew quarters are located below with three cabins. The teak aft deck features a high-gloss teak table that rotates for seating fore, aft and athwartship. A full bar is to port with sink, refrigerator & ice maker. Three teak bar stools and flat 42" Sunbrite HDTV flush mounted behind bar. The main salon features two upholstered sofas, three lounge chairs, cocktail table and game table with two chairs. A walk-up bar with sink, refrigerator, icemaker, glass storage & liquor cabinet is to port aft corner. To starboard is a flush mounted Samsung 60" HDTV with storage cabinet. The Dining area forward features a dining table that seats eight, raised buffet cabinets to port and starboard with custom Lucite fitted storage for china, stemware and silverware. Forward to starboard is the main entrance foyer and day head. Continuing forward is hanging locker and galley entrance. The gourmet galley features updated appliances, a raised upholstered dinette to port along with a U-shaped countertop with new Cambria stone countertops and 43" HDTV. Forward of the galley and down private staircase is the VIP Stateroom which offers an island centerline queen berth, walk-in wardrobe, built-in settee, bookshelves, TV and private ensuite bath with marble vanity and shower. A laundry center/pantry is forward of the formal dining area to port with a stacked washer/dryer, additional refrigerator with freezer, storage cabinets and drawers. A 3/4 door allows access under the raised Pilothouse to the 'dog house' for additional storage. A stairway on the port side entrance leads to the lower deck accommodations with a midship foyer separating the Master Stateroom forward and two additional Guest Staterooms aft. The Master Stateroom features a double entrance with centerline king berth, nightstands, sofa with two end tables/storage cabinets on each side. There is a 15-drawer dresser to starboard, two walk-in cedar-lined wardrobes and built-in safe. The master bath is located forward with marble vanity top, enclosed shower with built-in seat, multiple shower heads and sprayers along with a single enclosed water closet. Aft of the lower foyer are two additional Guest Staterooms to port and starboard featuring queen berths, TV's with separate receivers, DVD & CD players, cedar-lined hanging lockers and private baths with vanity and showers.

## Main Salon & Dining Area

---

- Custom cherry joinery throughout
- (2) Upholstered sofas w/throw pillows
- (2) Matching upholstered swivel club chairs
- Oversized woven rattan chair w/cushions
- (2) Mahogany end tables w/decorative table lamps
- Mahogany game table w/ (2) chairs
- Raised buffets port & stbd, w/granite tops & storage below
- Oval cherry wood dining table w/ (8) upholstered dining chairs

- Mirrored bulkhead w/cherry panels forward
- (2) Decorative sconces
- Oval soffit w/decorative light fixture over dining table
- Built-in storage buffet w/custom lucite storage for china, stemware & silverware
- Samsung 50" HD TV, wall mounted aft stbd corner of salon
- DVD/CD player, Apple TV, Integra sound system & Crestron control
- Walk-up bar cabinet w/ sink, refrigerator & glass shelves w/lighting, aft port side
- Custom pleated Vertiglide blinds
- Custom carpeting throughout ('18)
- Aft stainless steel double entry doors

## Galley & Laundry Equipment

---

- Custom Cambria stone countertops
- Elkay stainless steel double sink ('18)
- Kitchen Aid refrigerator w/freezer
- New Wolf induction glass stovetop ('18)
- New Viking microwave oven ('18)
- New Wolf oven ('18)
- Asko stainless steel dishwasher
- Insta-hot water
- Insinkerator disposal
- Raised dinette w/built-in upholstered U-shaped seating & table
- (2) Counter bar stools
- Samsung 43" HDTV
- U-Line wine cooler

### Pantry / Midship Laundry Center:

- Miele Novotronic washer/dryer
- Maytag refrigerator w/ freezer
- Storage cabinet w/ (4) drawers
- Door to dog house under pilothouse

## Master Stateroom

---

- California king berth w/storage underneath
- Mirrored bulkhead & panels behind berth
- (2) Built-in nightstands w/drawers below
- (2) Swing-arm reading lights above nightstands
- Built-in dresser w/15 drawers to stbd
- Opening port-lights w/Shoji screens & privacy covers
- Upholstered love seat sofa, to port

- (2) Built-in end cabinets w/drawer storage, (each end of sofa)
- Custom overhead headliner (new '18)
- Custom wallcovering
- Custom soffit w/ rope lighting above berth
- Indirect rope accent lighting below berth & above soffits
- Samsung 44" HDTV ('18), DVD/CD player, satellite TV receiver
- (2) Walk-in cedar-lined closets
- Built-in safe located in aft wardrobe closet Master Bath:
- Marble vanity top
- Mirrored bulkhead & lighted vanity mirror
- New headliner ('18)
- Large marble shower w/built-in bench & glass enclosure
- Custom wallcovering
- Linen locker & hamper
- Enclosed water closet w/ custom wallcovering
- Headhunter Royal flush hydro vac head
- Marble flooring

---

## VIP Guest Stateroom, Forward

---

- Queen berth w/storage below, custom spread & shams
- Mirrored bulkhead behind berth
- (2) Swing are reading lamps, port & stbd side
- Recessed halogen overhead lights
- Indirect rope accent lighting under berth & above soffit
- Escape hatch over berth
- Walk-in cedar lined closets
- Shoji screen panels
- (2) Built-in bookcases each side of berth
- Entertainment center w/ cherry doors, Samsung 25" HDTV, DVD/CD player & Sat receiver
- VIP Bath:
- Vanity w/ marble countertop
- Headhunter Royal Flush Hydro Vac toilet
- Large shower w/glass enclosure
- Halogen overhead lights
- Decorative framed mirror
- Custom wallcovering
- Linen cabinet
- Custom hardware & fixtures

---

## Queen Guest Stateroom, Port

---



- Queen berth w/storage below, custom spread & shams
- Mirrored bulkhead w/upholstered panels behind berth
- (2) Swing-arm reading lights
- (2) Built-in nightstands
- Built-in dresser w/(9) drawers
- Entertainment center w/Samsung HDTV, Sat receiver, DVD/CD player & speakers
- Indirect rope accent lighting under berth
- New headliner ('18)
- Custom wallcovering
- Cedar-lined closet Private Bath:
- Vanity w/ marble countertops
- Custom wallcovering
- Headhunter Royal Flush Hydro Vac toilet
- Molded fiberglass shower enclosure w/glass door
- Kohler sink & custom fixture

---

## Queen Guest Stateroom, Starboard

---

- Queen berth w/storage below, custom spread & shams
- Mirrored bulkhead w/upholstered panels behind berth
- (2) Built-in nightstands
- Built-in dresser w/ (8) drawers
- Entertainment center w/Samsung 25" HDTV, DVD/CD player, Sat receiver & speakers
- Indirect rope accent lighting under berth
- New headliner ('18)
- Custom wallcovering
- Cedar-lined closet Private Bath:
- Vanity w/ marble countertops
- Custom wallcovering
- Headhunter Royal Flush Hydro Vac toilet
- Molded fiberglass shower enclosure w/glass door
- Kohler sink & custom fixture

---

## Captain & Crew Quarters

---

The Crew Quarters are located below accessed from the aft deck transom watertight door. There are three crew cabins to include the captain's cabin with walk-around double berth, private head and shower to starboard. A side-by-side twin berth cabin and a single berth cabin share the second head with shower. The second set of washer/dryer is flush-mounted forward along with a chest freezer and additional storage cabinets located aft.

- Captain's cabin w/ walk-around full berth w/storage below, night stand, cedar-lined hanging

locker, Samsung 25" HDTV, private bath w/vanity & shower

- Crew cabin to starboard w/ twin berths, drawer storage, hanging locker & Samsung 25" HDTV
- Crew cabin w/single berth w/storage below, hanging locker & Samsung 25" HDTV
- Shared crew head w/ vanity & shower
- Recessed halogen overhead lights
- 24v DC reading lights
- Northstar 6000 GPS
- Raytheon depthfinder
- Refrigerator
- Samsung 24" HDTV crew area
- GE washer & dryer
- Chest freezer
- Storage cabinets

## Pilothouse Equipment

---

- Navigation, communication & safety monitoring systems displayed on hi-resolution flat screens
- Leather helm chair w/stainless steel pedestal
- Raised woven leather settee aft
- Table w/stainless steel grab rails & stainless steel pedestals
- Captain's desk to port
- Wooden 24" destroyer type wheel
- Electronic MTU engine controls
- MTU/DDEC engine instrumentation panel
- NEC LCD monitors
- Fully-integrated digital phone system
- Additional built-in seat, port
- Overhead bookshelf above desk
- Emergency overhead lights (red lens)

## Flybridge Equipment & Tender

---

Up four steps from the pilothouse to the flybridge with (3) Stidd helm chairs, wrap-around settee to starboard with teak hi/lo tables and Triconfort teak chairs. Wing stations are located port and starboard with MTU single lever controls, jog control, thruster control, engine start and stop switches, rudder angle indicators. Walk-behind bar area aft with granite top, refrigerator, icemaker, sink, electric Chef Grill, storage cabinets and two refrigerated drawers. Down two steps from the bridge going aft is the boat deck area. A 15' hard bottom inflatable tender is aft. The davit and emergency life raft are to port. An "L-shaped" settee with teak table is located forward across from the Jacuzzi that doubles up as a raised sun pad area. A sliding hatch gives access to the

spiral staircase down to the aft deck area.

- Factory hardtop w/ recessed overhead lights
- EZ2CY Eisenglass flybridge enclosure (2018)
- Helm station w/engine controls, instrumentation & electronics
- VHF radio, Garmin GPS & depthsounder
- 24" Destroyer stainless steel wheel
- Wing stations, port & stbd, w/ MTU single lever controls, jog & thruster control, engine start/stop switches & rudder angle indicators
- Built-in L-shaped settee w/cushions & cover
- Jacuzzi tub w/ cushion top for raised sun pad area
- Sun pads w/cushions & cover
- Bar w/granite top, U-line refrigerator w/ (2) refrigerator drawers, Scotsman icemaker, sink, storage cabinets & (3) bar stools
- Cabinet w/stainless electric Chef grill
- High gloss teak hi-lo table
- (2) Triconfort teak chairs
- 24" Destroyer stainless steel wheel
- Aft helm station to port
- 15' Nautica wide body hard bottom inflatable w/Yamaha 90HP O/B
- Nautical Structures 2000lb davit w/ power telescoping hydraulic boom & rotation (rebuilt '18)
- Removable chocks for tender

## Electronics & Navigational Equipment

---

- (2) Furuno radars w/ 18" LCD display (repeater on flybridge)
- Northstar 6000I GPS
- Garmin 545 GPS
- Simrad AP50 Autopilot w/ repeater on FB
- Furuno depthsounder w/ 15" LCD monitor
- Furuno touch-screen GPS ('15)
- Furuno AIS
- B&G wind, depth & speed w/full-function
- Nobeltec Odyssey navigation/electronic chart system w/18" LCD display
- Sea Tel HD Satellite system ('18)
- (2) Icom M602 VHF radios
- Furuno SSB transceiver FS
- Jastrom rudder angle indicators
- Nat GPIRB
- Pep Wave Max Wi-Fi system ('14)
- Tellular cellular phone system
- (2) Hailer horns integrated w/ VHF's

- Panasonic 16-station phone system w/ 10 phones
- KVH Trac phone 252 Satellite telephone
- Westport's VIC Security monitoring system
- Elbex hi-resolution color cameras (aft deck & engine room)
- Ships Clock & barometer
- Ships Barometer
- Night Vision

## Aft Deck & Swim Platform

---

- Teak decks
- Granite top bar w/ icemaker, refrigerator & sink
- (3) Teak bar stools w/cushions
- Built-in bench seating settee aft w/ cushions & cover
- High-gloss teak dining table w/inlay
- (4) Triconfort teak dining chairs
- Sunbrite 42" TV ('15)
- (9) Storage lockers in bulwarks, port & stbd
- Teak lounge chair w/ ottoman
- Stainless steel, double entry glass doors into salon
- CCTV aft deck camera w/ zoom & tilt
- Courtesy deck lighting under bench seating & bar area
- Overhead dimmable recessed lighting
- Spiral staircase to bridge w/stainless steel hand rails, teak steps & sliding hatch
- Dual stairways w/teak treads & handrails to swim platform, port & stbd
- Teak swim platform
- Manual passerelle
- Teak swim ladder
- Fresh water washdown
- Watertight transom door to engine room & crew quarters
- (4) Removable U-shaped stainless steel rails w/ sockets
- (2) Stainless steel 6" pop-up cleats for tender
- 100-gallon gas tank
- (2) Maxwell 2200lb windlass
- (6) Underwater lights

## Deck Equipment

---

- Circular seating on fore deck w/filler cushion allowing for large sunlounge area
- Circular hi-lo table
- Raised settee w/ cushions, forward bow
- (2) Maxwell 4500lb windlass

- (2) 300lb Anchors w/chain
- Storage area for fenders, lines & cleaning supplies
- Port & starboard deck entrances w/ bulwark gates
- Marquipt 7-step tide ride boarding ladder w/ hand rails & mounting brackets, port & stbd
- Nautical Structures 2000lb davit on bridge (rebuilt '18)
- All new exterior cushions ('18)
- Emergency life raft Hull / Exterior:
- Awlgrip stark white hull & topsides paint job ('18)
- Bottom paint job ('18)
- Props balanced, prop speed & new cutlass shaft bearings ('18)

## Electrical Equipment

---

- (2) Northern Light 65KW generators (Port: 7205 Hrs / Stbd: 7206 Hrs)
- (2) 100 Amp isolation transformers w/automatic voltage adjustment
- Lightning protection w/ hull Dyna plate & lightning antenna
- (2) Glendenning cablemaster cord reels, port
- 100 amp, 240v single phase
- TV & Phone outlets w/100' TV/Phone cord
- Perko navigation lights
- 70 Amp 12v DC battery charger for electronics
- 95 Amp 24v DC for ship's service bank
- 40 Amp 12v DC charger for main engine bank
- 40 Amp 12v DC charger for generator bank

## Engine & Mechanical Equipment

---

- Twin MTU/DDC 16V-2000's, 2000 HP each
- American 16" hydraulic bow thruster
- Naiad stabilizer system w/ new actuators, rams & seals in '18
- (2) Sea Recovery 1400 GPD Watermakers
- (3) Aqua Air 5-ton chilled water A/C system w/ (2) new compressors ('17)
- New A/C ducting and new blowers by Blue Star ('19)
- Sea Pro 300 fuel filter for each main engine
- VIC monitoring system w/sensors throughout vessel
- Cast Urethane foil-shaped rudders w/stainless steel stocks
- MDEC controls in (4) stations
- Air compressor 220v 2HP to operate horn w/inline water separator & regulator
- Aquamet 4" stainless steel shafts
- Jastram power steering w/dual engine driven pump
- (8) Remote 24v electric bilge pumps w/ manual & automatic switches & alarms on pumps
- Fuel gauges sight tubes located in engine room & VIC monitoring system

- Fuel transfer pump w/flow meter & timer
- Fire suppression FM200 system w/manual & automatic controls
- Lube oil tank 60-gal w/deck fill, fill spigot, 50-gallon lube oil waste tank w/drain spigot & portable extraction pump w/quick disconnects on pump and engines
- Head Hunter Tidal Wave 2 MSD system

## 2018 Upgrades/Improvements

---

- Complete exterior Awlgrip paint job at Lauderdale Marine Center (6/18)
- Full bottom paint job
- Prop speed
- New shaft seals & cutlass bearings
- Props balanced
- Sea Tel HD Satellite system
- Nautical Structures davit rebuilt
- New Cambria stone countertops in galley
- New Elkay stainless steel double sink
- New Viking microwave
- New Wolf induction glass cooktop
- New Wolf oven
- New custom carpeting
- New EZ2CY flybridge enclosure
- New exterior cushions throughout
- (2) A/C compressors (new '17)

## Exclusions

---

- The name "Southern Star" is registered and does not convey
- All owners & crew personal items
- Detailed list will be provided upon request

## Исключения

---

При продаже яхты исключаются личные вещи владельца.

## Отказ от ответственности

---

Компания предоставляет описание судна или яхты добросовестно, но не может гарантировать точность этой информации, а также не ручается за техническое состояние. Покупатель должен проинструктировать своих агентов или оценщиков исследовать представленную информацию более подробно, по собственному желанию.

Продажа судна или яхты, изменение цены или снятие с продажи будет происходить без предварительного уведомления.

# ФОТОГРАФИИ



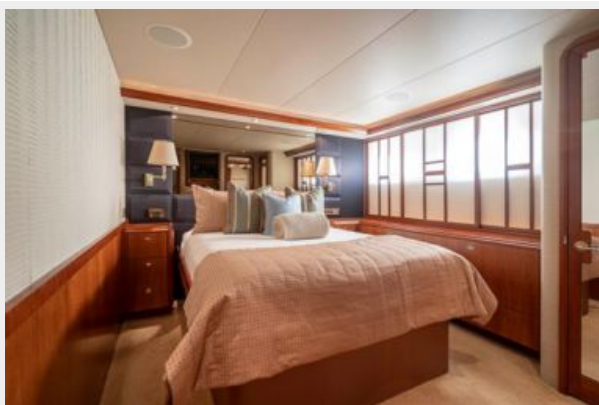












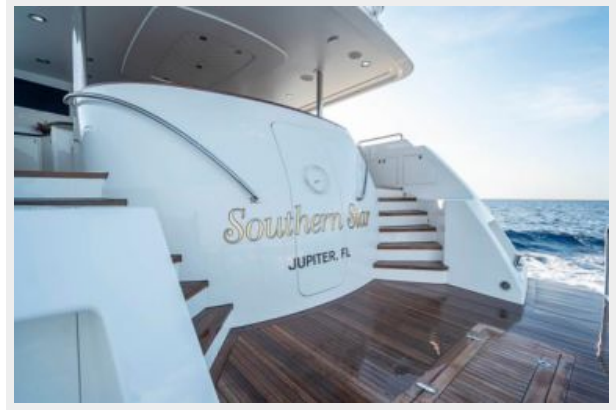














# КОНТАКТЫ

---

Андрей Шестаков (Andrey Shestakov) – ведущий яхтенный брокер отдела продаж яхт и судов компании Shestakov Yacht Sales Inc. Официальный представитель Shestakov Yacht Sales Inc. для русскоговорящих клиентов в центральном офисе компании в Майами/Форт Лодердейл/Флорида/США.

## Контактная информация

---

Email: [andrey@shestakovyachtsales.com](mailto:andrey@shestakovyachtsales.com)

Web: [shestakovyachtsales.com](http://shestakovyachtsales.com)

## Телефоны

---

Краснодарский край: **+7(918)465-66-44**

США, Майами, Флорида: **+1(954)274-4435**

## Время работы

---

Понедельник – Суббота: **9:00 - 21:00**  
EDT

Воскресенье: **Закрето**

## Адрес

---



Harbour Towne Marina, 850 NE 3rd St,  
STE 213, Dania, FL 33004