

## SMILE — BENETEAU



**Судостроитель:** BENETEAU

**Год постройки:** 2015

**Модель:** Sloop

**Цена:** ЦЕНА ЯХТЫ ПО ЗАПРОСУ

**Местонахождение:** United States

**Длина общая:** 48' 0" (14.63m)

**Ширина:** 15' 7" (4.75m)

**Макс. осадка:** 7' 1" (2.16m)

Купить Smile — BENETEAU а также выбрать подходящую вам яхту из нашего каталога яхт вам поможет опытный яхтенный брокер Андрей Шестаков. На сегодняшний день компания Shestakov Yacht Sales Inc. имеет большое количество яхт в собственном списке продаж, а также тесно сотрудничает со всеми крупными яхтенными производителями по всему миру.

Для того чтобы купить яхту Smile — BENETEAU а также проконсультироваться по любому вопросу связанному с покупкой, продажей, чартером яхт позвоните по телефону **+7(918)465-66-44**.

# ОГЛАВЛЕНИЕ

ОГЛАВЛЕНИЕ	2
ХАРАКТЕРИСТИКИ	4
Обзор	4
Основная информация	4
Размеры	4
Скорость, вместимость и масса	4
Размещение	4
Корпус и палуба	5
Информация о двигателе	5
ПОДРОБНОЕ ОПИСАНИЕ	6
Construction	6
Deck Equipment	6
Interior	8
Salon	8
Galley	9
Master Stateroom	9
Master Head	9
Guest Cabins	10
Engine and Mechanical Details	11
Electrical Equipment	11
Plumbing and Propane	11
Additional Equipment	12
Mechanical Disclaimer	12
Исключения	12
Отказ от ответственности	12
ФОТОГРАФИИ	14
КОНТАКТЫ	24
Контактная информация	24

---

Телефоны	24
Время работы	24
Адрес	24

# ХАРАКТЕРИСТИКИ

## Обзор

“SMILE” - Apart from her performance at sea and the huge amount of space that sets this boat apart, this layout makes optimal use of the cockpit beam. An incredibly efficient deck plan makes her wonderfully safe and easy to use. The furling mast, self-tailing jib and all the halyards and sheets brought back to a single winch at each of the helm stations, make maneuvering simple when short-handed sailing. Many upgrades have been added. “SMILE” has been properly cared for, maintained and pampered! This Vessel is ready to SET SAIL!

**MAJOR PRICE REDUCTION!!! OWNER CONSIDERING ALL OFFERS!! BOAT MUST GO!!**

## Основная информация

Тип судна: Sloop

Подкатегория: Крейсерская яхта

Модельный год: 2015

Год постройки: 2015

Страна: United States

## Размеры

Длина общая: 48' 0" (14.63m)

Ширина: 15' 7" (4.75m)

Макс. осадка: 7' 1" (2.16m)

## Скорость, вместимость и масса

Вместимость воды: 98 Gallons

Объем топливного бака: 106 Gallons

## Размещение

Всего кают: 3

Всего ком. состава: 2

---

## Корпус и палуба

---

**Материал корпуса:** Fiberglass

---

## Информация о двигателе

---

**Двигатели:** 1

**Производитель:** Yanmar

**Тип двигателя:** Inboard

**Тип топлива:** Diesel

# ПОДРОБНОЕ ОПИСАНИЕ

## Construction

- Design made following European Directive requirements and according to EC certification
- Monolithic hull in polyester
- Monolithic structural hull liner bonded to the hull
- Injection molded deck in glass fiber/balsa sandwich. Covered with \*diamond-point\* non-slip coating
- Deck hull joint screwed, bonded and banded with 1 solid wood buowark
- Cast iron keel fixed with bolts and stainless steel backing plates
- Rudder hung with glass compound stock
- White colored hull-grey metal hull decoration

## Deck Equipment

### Cockpit:

- Self-bailing Cockpit
- 2 Cockpit lockers
- 2 Lockers in cockpit floor under Helm's feet
- 1 Liferaft locker under helm seat
- 1 Gas locker for bottle(s) under the port helm seat
- Natural solid wood slatted cockpit benches
- 2 Steering wheel consoles: Stainless Steel Steering Wheels-Covered in Leather-Steering gear at the Helm Station-Metal cable transmission system-Stainless Steel handrail-Navigation instrument pod- Glass holder
- 1 Deck plate for access to tiller system + Power supply access hatch
- 1 Emergency tiller
- 2 Steering compass on console
- Portside engine control and control panel
- Polyester cockpit table- 2 Flaps- Glove boxes- 2 Large Storage space- Stainless steel handrail- 12 V Power outlet- Lamp with shade
- Cold water cockpit shower
- 1 Fixed composite arch- Built-in lighting
- 1 Shore power socket to port
- 2 Hinged PMMA companion way doors- Sliding hatch made of PMMA

### Swim Deck/Stern Deck:

- Fully opening transom, convertible into swim platform

- Electrically controlled opening
- Natural solid wood decking on swim platform
- 1 Stainless steel swim/boarding ladder – Solid wood steps - Folding

### **Rigging:**

- Standard mast 9/10 anodized aluminum installed on the deck, 2 sets of spreaders
- Anodized aluminum boom
- Discontinuous stainless steel standing rigging
- 2 Backstays with turnbuckles
- Rigid boom vang
- Genoa furling system with drum on the deck
- 2 Blocks Stand Up on mainsheet arch
- 2 Genoa tracks with piston adjusted traveler cars
- 2 Genoa sheet return blocks
- Rigging run back to cockpit (except boom topping lift)
- Complete running rigging: Main Halyard, Genoa Halyard with clutch on mast and cleat, Boom topping lift with cleat on mast, Mainsheet, 2 Genoa sheets, 2 Reefing lines and 1 Manual reef
- 8 Line stoppers
- 2 Halyard bags

### **Winches:**

- 2 Self-tailing genoa sheet winches (H60.2 STC)
- 2 Self-tailing coach roof winches (H46.2 STC)
- 2 Aluminum Winch Handles Speed Grip
- 2 Winch Handle Holders

### **Sails:**

- Furling Genoa with UV protective strip
- Semi full batten written sail with slider and roller slider
- System: System Lazy Jack and Lazy bag in Natural color

### **Mooring-Anchoring:**

- Self-bailing chain locker- Clench bolt- Hatch cover
- Stainless steel bow fitting 2 rollers
- 12 V-1500 W Vertical electrical windlass- Remote Control
- 6 Aluminum Mooring cleats- Stainless steel deck line protection

## Sail Locker:

- Access through deck hatch T60
- Stainless Steel ladder
- Cubby hole lockers

## Safety On Deck:

- 1 Open Stainless Steel forward pulpit
- 2 Stainless Steel aft pushpits
- 1 Ring lifebuoy bracket
- 1 Outboard engine bracket
- 1 Flag pole socket
- Double lifelines and Stainless Steel Stanchions- Door to Port and to Starboard in lifeline

## Interior

---

- Woodwork- Alpi Mahogany
- Parquet type laminated floors
- Cloth hull spar ceilings in salon and cabins
- Fabric upholstery
- Marine mattresses in the cabins
- Head room at 6'6"
- Wooden salon companionway with molded wood hanging steps with non-slip surface
- 2 Leather covered stainless steel handrails

## Salon

---

- Headroom at 6'6"
- U-shaped salon bench- Double density foam
- Seating on pantograph with backrest
- Salon table in 1 piece- Varnished wood top with inley- Aluminum legs
- Mirror on bulkhead
- Cupboards- Cubby hole lockers and storage along the hull – Storage under bench seats
- Cubbyholes with Stainless Steel beading
- 2 Panoramic deck house windows with concertina blinds
- 2 Hull portholes with curtain
- 2 Opening portholes on coaming in side windows
- 1 Opening deck hatch with shutter/Mosquito screen

## Chart Table (Port Side) –



- Sliding, can be configured with the armchairs-Placed against the forward bulkhead, against the galley or between the 2 mobile seats
- Table with flap-Molded wood beading
- Switch panel on bulkhead for access to electrical functions
- Navigation instrument panel
- 1 White Reading light/ Red

---

## Galley

---

- Headroom at 6' 3"
- L-shaped galley with separate sink located below companionway
- Synthetic solid surface countertop in Jenna "Sand"
- 1 Stainless steel sink 2 rectangular basins- 1 Mixer tap cold water/hot water, under pressure
- 1 Gas stove with two (2) burners – Stainless steel oven on mountings- Stainless steel protection handrail
- 1 12 V 100 L ice box (26 gal), top opening
- 1 12 V 130 L refrigerator (34 gal), front opening
- Fitted cupboards and closed cubbyholes (Shelving, Garbage bin)
- 1 Lower cupboard: 1 Drawer – 2 Shelves
- Storage space along the hull
- 2 Opening ports on coaming with curtains on side windows

---

## Master Stateroom

---

- Headroom at 6'4"
- Central double bed
- Hanging locker
- Glove Box
- Cubby Hole Locker
- Lower Cupboard
- Storage space under bed
- 2 Flush deck hatches with shutter/Mosquito screen
- 2 Hull portholes with curtain

- 

---

## Master Head

---

**To Starboard:**

- Moulded basin in grey work surface, Mixing tap hot water/Cold water
- 1 Washroom storage Cabinet
- 1 Mirror
- 1 Glass shower cabin with flush access and storage on the bulkhead
- 1 Flush deck hatch with shutter/mosquito screen

**To Port:**

- Separate WC
- Storage space along the hull
- 1 Flush deck hatch with shutter/ Mosquito screen

---

## Guest Cabins

---

**Starboard Aft Cabin:**

- Headroom at 6'1"
- 1 Double bed
- Access door to starboard aft washroom
- Cupboards
- Hanging locker
- Closed cubbyholes
- Storage on both sides of berth
- 1 Large size hull port with curtain
- 1 Opening deck hatch with shutter/Mosquito screen
- 1 Opening cockpit port with curtain
- 1 Glazing on companionway bulkhead

**Starboard Aft Head:**

- Headroom at 6'4"
- Access through salon and the starboard aft cabin
- Separate shower- 1 Mixing tap hot water/ Cold water – Storage on bulkhead
- 1 Manual marine toilet
- 1 Rigid Holding tank (17 gal)
- Sink-1 Mixing tap Hot water/Cold water
- 2 Mirrors
- Toilet accessories
- 1 Opening portlight with curtains in side windows in the coaming

**Port Aft Cabin:**

- Headroom at 6'1"

- 1 Double bed
- Cupboards
- Hanging Locker
- Closed cubbyholes
- 1 Large size hull port with curtain
- 1 Opening deck hatch with shutter/mosquito screen
- 1 Opening cockpit port with curtain
- 1 Glazing on companionway bulkhead

---

## Engine and Mechanical Details

---

- Yanmar 80hp Diesel Engine
- Engine Control panel in the port cockpit
- Engine compartment: Soundproofing foam- Ventilation: 1 air intake and 1 air outlet
- 1 Alternator 12 V
- 1 Rotomolded diesel tank (53 gal- under port aft berth)- Electronic gauge-Low level alarm and 1 Deck filler
- Filters: Sea Water-Diesel-Decanter
- Fixed three blade propeller
- 1 Engine access through companionway (opening with 2 gas pistons)- 2 Engine access through aft cabins

---

## Electrical Equipment

---

- 12 V Circuit
- 2 Service batteries (140 Ah)
- 1 Engine battery (110 Ah)
- 1 Charge divider
- 12 V Electrical panel (Fuses-Voltmeter-Water gauge-Fuel Gauge-Battery warning-Fuel warning-Water warning)
- 1 12 V Power Outlets
- Lighting: Overhead lights-Reading lights - Reading light White/red- White striplighting
- Navigation Lights: 1 Forward and aft navigation lights - 1 engine navigation light/ Deck light forward of mast – 1 Mooring light on masthead
- Wire runs for options cables
- Full 220 V system (Interior power outlet 220 V, 40 Amperes battery charger, Shore power socket)

---

## Plumbing and Propane

---

- 1 Rotomolded freshwater tank (330 L / 87 US Gal Forward cabin) - 2 Deck fillers - Separate

tank filling - Tank selection with 1/4 by-pass valves

- Water pressure system - Expansion tank - Inline filter
- 40 L Electric water heater / 11 US Gal (engine run)
- 1 Rigid holding tank 64L / 17 US Gal
- Delayed shower draining and electric shower drain pumps
- 1 Electric bilge pump - 1 Manual bilge pump
- 1 Electric ice box drain pump
- • 1 Propane Gas bottle box in the cockpit (diameter 0,34 m x 0,53 m / 1'1" x 1'9")
- • Regulator and solenoid

---

## Additional Equipment

---

- Kato S/S Radar Arch w/Davits
- Superwind Wind Generator (less than 100 hours)
- 320 Watts Solar
- Iridium Go w/Remote Antenna
- Water maker – 27 gal per hour
- Bimini, Connector panel and dodger
- Seat Cushions
- Quantum Trisail and genoa, full cutter rigging
- Custom Spinnaker
- 8 hp Outboard Motor
- 10'3" Dinghy
- Complete Safety Package included: Life Sling, DanBoy, 4 Man-24 Hr Life raft with S/S deck Cradle, Coast Life Jackets

---

## Mechanical Disclaimer

---

\* Engine hours are as of the date of the original listing and are a representation of what the listing broker is told by the owner and/or actual reading of the engine hour meters. The broker cannot guarantee the true hours. It is the responsibility of the purchaser and/or his agent to verify engine hours, warranties implied or otherwise and major overhauls as well as all other representations noted on the listing brochure.

---

## Исключения

---

При продаже яхты исключаются личные вещи владельца.

---

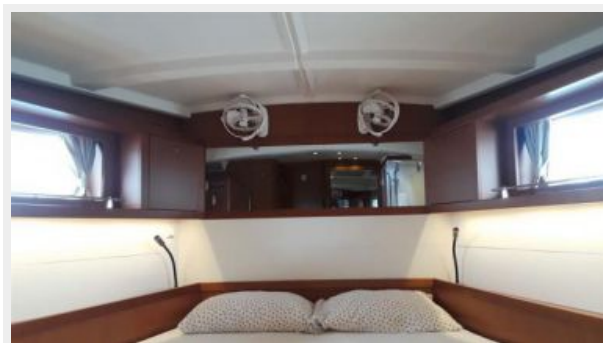
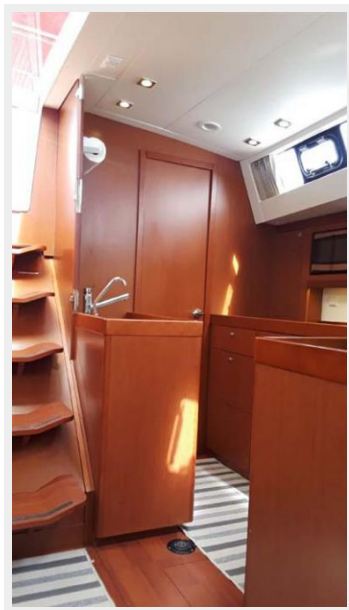
## Отказ от ответственности

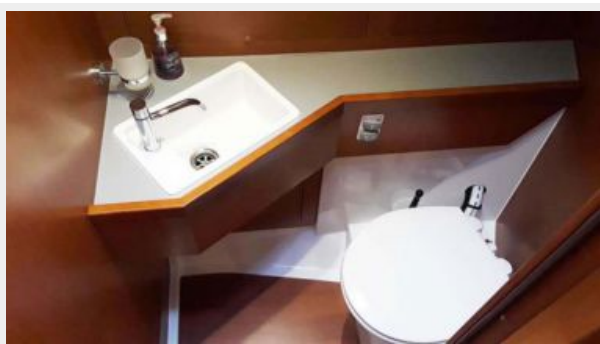
---

Компания предоставляет описание судна или яхты добросовестно, но не может

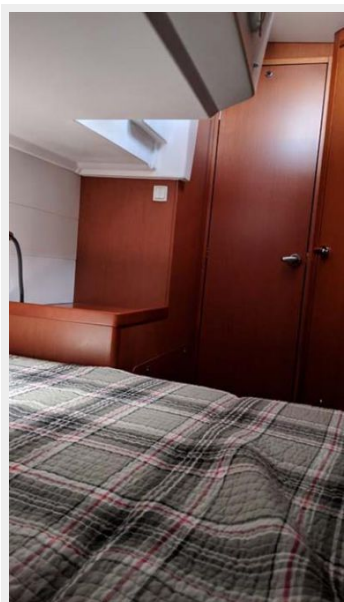
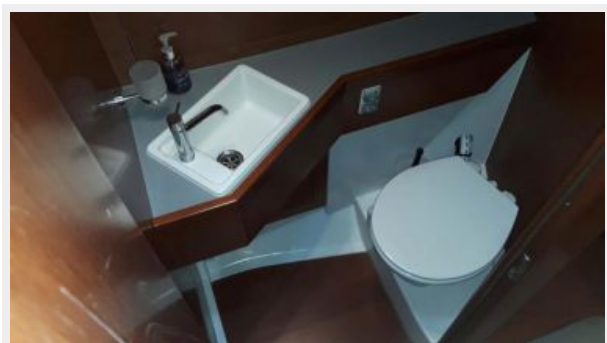
гарантировать точность этой информации, а также не ручается за техническое состояние. Покупатель должен проинструктировать своих агентов или оценщиков исследовать представленную информацию более подробно, по собственному желанию. Продажа судна или яхты, изменение цены или снятие с продажи будет происходить без предварительного уведомления.

# ФОТОГРАФИИ









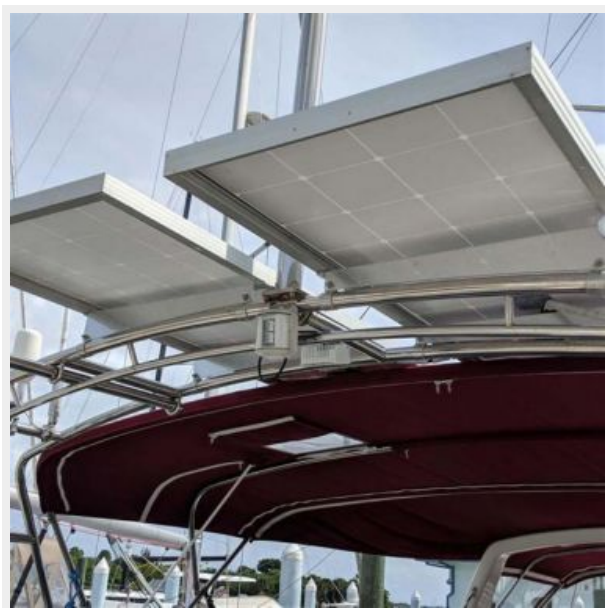






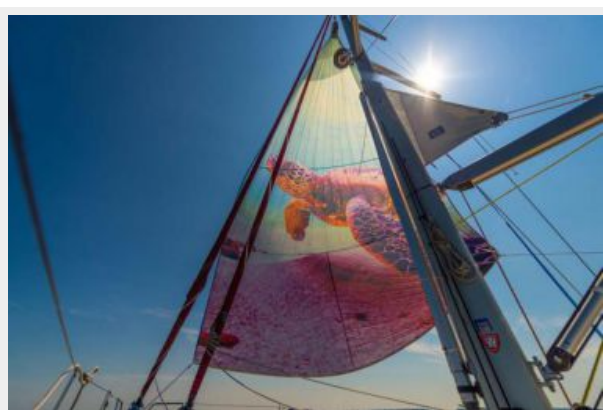














# КОНТАКТЫ

---

Андрей Шестаков (Andrey Shestakov) – ведущий яхтенный брокер отдела продаж яхт и судов компании Shestakov Yacht Sales Inc. Официальный представитель Shestakov Yacht Sales Inc. для русскоговорящих клиентов в центральном офисе компании в Майами/Форт Лодердейл/Флорида/США.

## Контактная информация

---

Email: [andrey@shestakovyachtsales.com](mailto:andrey@shestakovyachtsales.com)

Web: [shestakovyachtsales.com](http://shestakovyachtsales.com)

## Телефоны

---

Краснодарский край: **+7(918)465-66-44**

США, Майами, Флорида: **+1(954)274-4435**

## Время работы

---

Понедельник – Суббота: **9:00 - 21:00**  
EDT

Воскресенье: **Закрето**

## Адрес

---



Harbour Towne Marina, 850 NE 3rd St,  
STE 213, Dania, FL 33004