

## VITA



**Year Built:** 2010

**Model:** Motor Yacht

**Price:** PRICE ON APPLICATION

**LOA:** 88' 3" (26.9mm)

**Beam:** 20.66

**Max Draft:** 6' 6" (1.98mm)

**Cruise Speed:** 23 Knots Kts. (26 MPH)

**Max Speed:** 30 Knots Kts. (35 MPH)

Our experienced yacht broker, Andrey Shestakov, will help you choose and buy a yacht that best suits your needs **VITA** — n/a from our catalogue. Presently, at Shestakov Yacht Sales Inc., we have a wide variety of yachts available on our sale's list. We also work in close contact with all the big yacht manufacturers from all over the world.

If you would like to buy a yacht **VITA** — n/a or would like help answering any questions concerning purchasing, selling or chartering a yacht, please call **+1(954)274-4435**

---

# TABLE OF CONTENTS

---

TABLE OF CONTENTS	2
SPECIFICATIONS	3
Overview	3
Basic Information	3
Dimensions	3
Speed, Capacities and Weight	3
Accommodations	3
Hull and Deck Information	4
Engine Information	4
PHOTOS	5
CONTACTS	7
Contact details	7
Telephones	7
Office hours	7
Address	7

---

# SPECIFICATIONS

---

## Overview

---

VITA is a perfect example of the extremely popular Sunseeker 88 Yacht. Built in 2010, this particular 88 Yacht was specially constructed for family use with practicality and luxury in mind. Her striking navy blue hull, opening hard top, Trac Digital fin stabilizers and a pair of MTU 2000 M93 engines propel her to a comfortable cruising speed of 21 knots and a maximum speed of 30 knots. Accommodating up to 8 guests in 4 en-suite staterooms, the 88 Yacht is extremely well proportioned and allows for generous accommodation.

## Basic Information

---

**Category:** Motor Yacht

**Sub Category:** Motor Yacht

**Model Year:** 2010

**Year Built:** 2010

## Dimensions

---

**LOA:** 88' 3" (26.9mm)

**Beam:** 20.66

**Max Draft:** 6' 6" (1.98mm)

## Speed, Capacities and Weight

---

**Cruise Speed:** 23 Knots Kts. (26 MPH)

**Max Speed:** 30 Knots Kts. (35 MPH)

**Water Capacity:** 1500 Gallons

**Fuel Capacity:** 7500 Gal Gallons

## Accommodations

---

**Total Cabins:** 4

**Sleeps:** 8

**Crew Cabin:** 3

---

## Hull and Deck Information

---

**Hull Material:** Fiberglass

**Hull Configuration:** Planing

---

## Engine Information

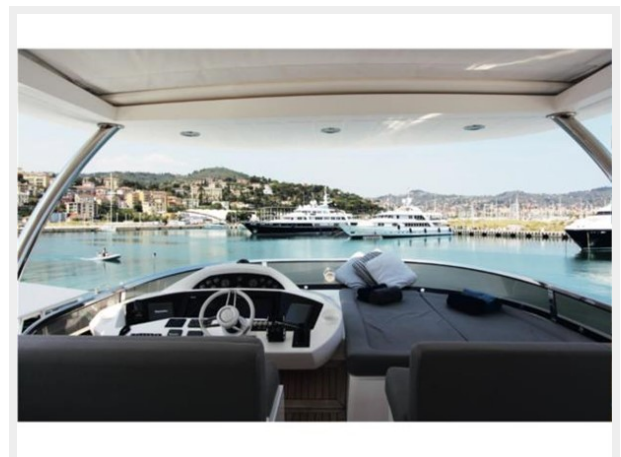
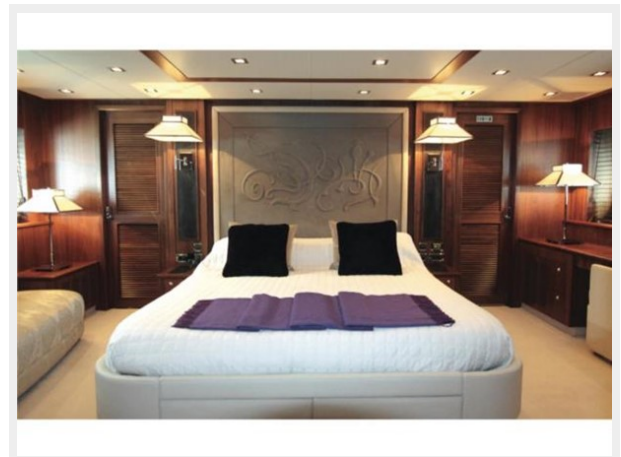
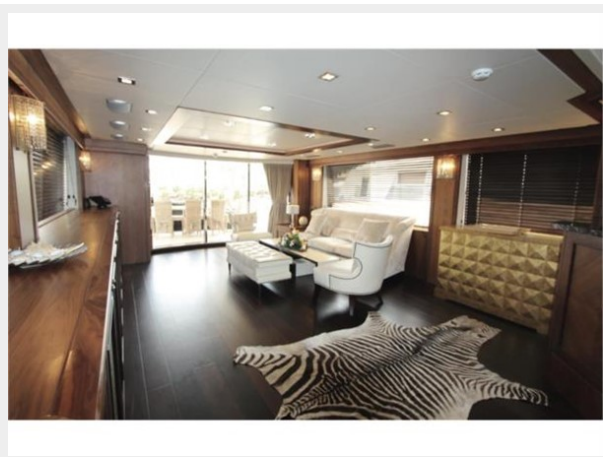
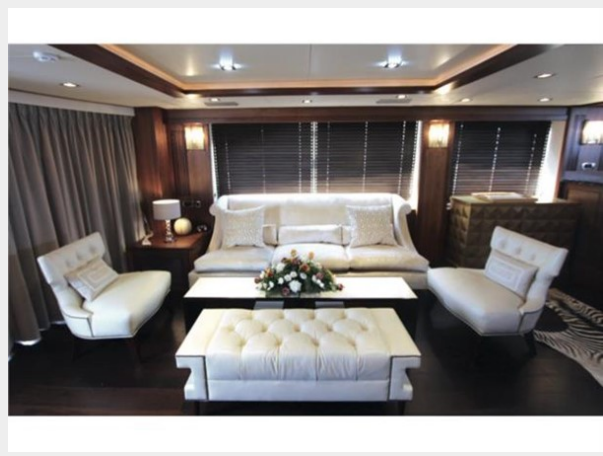
---

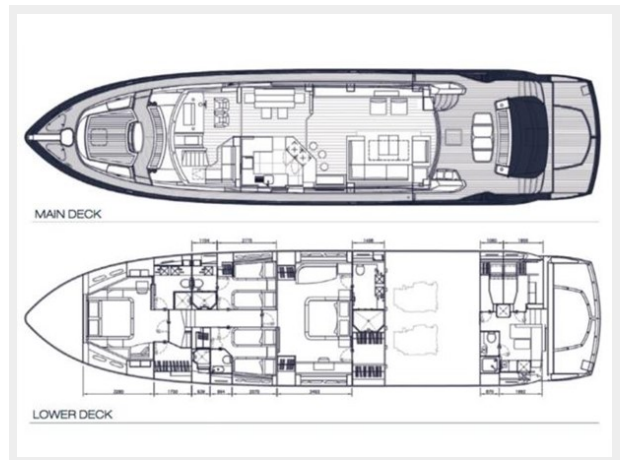
**Engines:** 2

**Manufacturer:** MTU

**Fuel Type:** Diesel

# PHOTOS





---

# CONTACTS

---

Andrey Shestakov, leading yacht broker of the sales department of Shestakov Yacht Sales Inc. Shestakov Yacht Sales Inc., the official representative of the Miami/Fort Lauderdale FL headquarters.

---

## Contact details

---

Email: [andrey@shestakovyachtsales.com](mailto:andrey@shestakovyachtsales.com)

Web: [shestakovyachtsales.com/en/](http://shestakovyachtsales.com/en/)

---

## Telephones

---

USA: +1(954)274-4435

---

## Office hours

---

Monday – Saturday: **9:00 - 21:00** EDT

Sunday: **closed**

---

## Address

---



Harbour Towne Marina, 850 NE 3rd St,  
STE 213, Dania, FL 33004