

## IMPULSIVE — NORSHIP



**Builder:** NORSHIP

**Year Built:** 1994

**Model:** Motor Yacht

**Price:** PRICE ON APPLICATION

**Location:** United States

**LOA:** 126' 0" (38.40m)

**Beam:** 23' 7" (7.19m)

**Max Draft:** 7' 6" (2.29m)

**Cruise Speed:** 26 Kts. (30 MPH)

**Max Speed:** 32 Kts. (37 MPH)

Our experienced yacht broker, Andrey Shestakov, will help you choose and buy a yacht that best suits your needs **IMPULSIVE — NORSHIP** from our catalogue. Presently, at Shestakov Yacht Sales Inc., we have a wide variety of yachts available on our sale's list. We also work in close contact with all the big yacht manufacturers from all over the world.

If you would like to buy a yacht **IMPULSIVE — NORSHIP** or would like help answering any questions concerning purchasing, selling or chartering a yacht, please call **+1(954)274-4435**

---

# TABLE OF CONTENTS

---

TABLE OF CONTENTS	2
SPECIFICATIONS	3
Basic Information	3
Dimensions	3
Speed, Capacities and Weight	3
Accommodations	3
Hull and Deck Information	3
Engine Information	4
DETAILED INFORMATION	5
Overview	5
Accommodations	5
Mechanical	5
Equipment	6
Extras	6
Exclusions	6
Disclaimer	7
PHOTOS	8
CONTACTS	17
Contact details	17
Telephones	17
Office hours	17
Address	17

---

# SPECIFICATIONS

---

## Basic Information

---

**Category:** Motor Yacht

**Model Year:** 1994

**Year Built:** 1994

**Refit Year:** 2019

**Country:** United States

## Dimensions

---

**LOA:** 126' 0" (38.40m)

**Beam:** 23' 7" (7.19m)

**Max Draft:** 7' 6" (2.29m)

## Speed, Capacities and Weight

---

**Cruise Speed:** 26 Kts. (30 MPH)

**Max Speed:** 32 Kts. (37 MPH)

**Water Capacity:** 1500 Gallons

**Fuel Capacity:** 9500 Gallons

## Accommodations

---

**Total Cabins:** 4

**Sleeps:** 8

**Total Heads:** 5

## Hull and Deck Information

---

**Hull Material:** Composite

---

## Engine Information

---

**Engines:** 2

**Manufacturer:** MTU

**Model:** 12V396TE94

---

# DETAILED INFORMATION

---

## Overview

---

\* OFFERED FOR SALE AS-IS. STARBOARD ENGINE IS INOPERABLE \*IMPULSIVE's interior was originally designed by Paola D Smith & associates and finished at the Codecasa shipyard in Italy. Since then she has undergone refits in 2006, 2008, 2010, 2012 and now from 2018-2019. As you enter the main salon, A Full service bar to port providing seating for 4 as well as a plush dining for five guests looking out of four large port side windows. Front and center of salon is the entertainment center providing TV and media visible from all area's and a lush couch to starboard and a convenient day head to port. Walking forward, is the full size galley boasting commercial grade stainless appliances with enough room to make any onboard chef feel at home. Continuing forward is the VIP Suite with port and starboard windows. Extra large TV, En-Suite Head, and closet space compliment the rooms size. Taking the staircase down lands you in a beautiful foyer with access to the staterooms. One unique trait of IMPULSIVE is the unique shaping to each staterooms. With round and flowing lines bringing a feeling of more open space to each stateroom makes an alarming difference. Aft is the Master Suite boasting port and starboard windows, a vanity to port and settee to starboard. His and hers head with shower, garden tub, and closets. Forward of the master is two double staterooms with en-suite heads, closets, and flat screen tv's. Taking the Spiral staircase to the top level and you will arrive in the skylounge. With beautiful 360 views, an illuminated starlight ceiling and lounge area makes this one of the most comfortable interior areas of the vessel. Double glass doors provide access to the expansive bridge deck with an outdoor bar, jacuzzi, incredible sun lounge area and retractable sun shade. Taking the Aft deck stairs down will bring you to the expansive main deck. Boasting her own full service bar and alfresco dining area for all of your guests to enjoy. Taking the side decks forward will bring you to the forward lounge pad for those evening cruises. In the garage is all of the IMPULISVE brand toys she's known for. 2x Three person sea-doo's, SeaBobs, 20x20 Inflatable lounge and in water pool, and Inflatable slide all continuing off the Opacmare transformer swim platform/gangway that's unique to IMPULSIVE make her one of the most fun vessels at anchor. She currently carries a crew of 8 to adhere to IMPULSIVE owner's intensive luxury and service standards. IMPULSIVE is now seriously for sale taking into consideration her recent refit costs and gorgeous condition. She has a draft of only 5.1ft that makes her the perfect yacht for the shallow Bahamas and Caribbean waters.

## Accommodations

---

Her interior layout consists of 4 Cabins: - 1 Master Cabin w/ En-Suite Head + Jacuzzi + Vanity + Closet + Office + Safe - 1 VIP Cabin w/ En-Suite Head + Closet + Safe - 2 Double Cabins w/ En-Suite Heads + Closet + Safe

## Mechanical

---

Engines: 2 X MTU 12v 396 TE94 2,252 HP (2,100 Hours SMOH) Generators: 2 x 60KW Northern Lights (Euro and US) (8,240 & 7,896 hrs) Draft: 1.65m/5.6ft Displacement: 100 Tons Gross Tonnage: 219 GTN Fuel Tank: 36,100L / 9,500 US Gal Water Tank: 5,700L / 1,500 US Gal Cruising Speed: 24 Knots Maximum Speed: 32 Knots Consumption: 650 L/H - 900 L/H

## Equipment

---

- WiFi
- Saloon with Updated Electronics
- Outdoor Tv's
- Surround Sound
- Ipod Stations
- SATCOM
- Commercial Kitchen
- Exterior Full Bar
- Interior Full Bar
- Interior Dining Table
- AFT Deck Dining Table
- Fly Bridge Dining
- Sun Lounge on Bridge Deck
- Sun Bed Foreward
- Opacmare "Transformer" Gangway Swim Platform
- Naiad Stabilizers
- Exterior Hi-Fi
- Jacuzzi

## Extras

---

- Skylounge and Salon Bar
- Giant Sundeck with Jacuzzi, Sunbeds, and Alfresco Dining
- 2 X 3 Person Sea-Doo's
- 2 X Sea-Bobs
- Waterslide
- 20ft X 20ft Inflatable Pool and Lounge
- Waterskis
- Wakeboards
- Towable Tube
- Beach Toys
- Scuba Gear

## Exclusions

---

Owner's personal belongings.

## Disclaimer

---

The Company offers the details of this vessel or yacht in good faith but cannot guarantee or warrant the accuracy of this information nor warrant the condition of the vessel. A buyer should instruct his representatives, agents, or his surveyors, to investigate such details as the buyer desires validated. This vessel or yacht is offered subject to prior sale, price change, or withdrawal without notice.

# PHOTOS





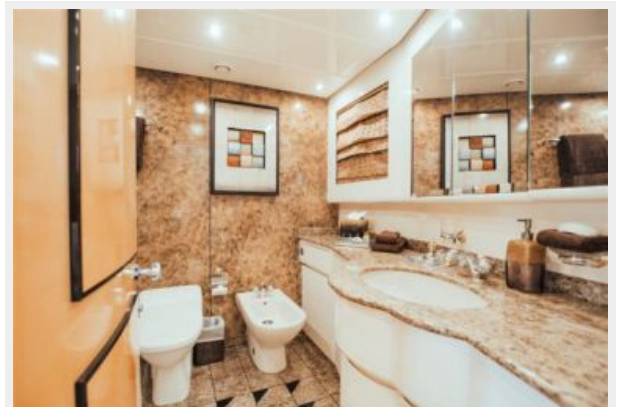


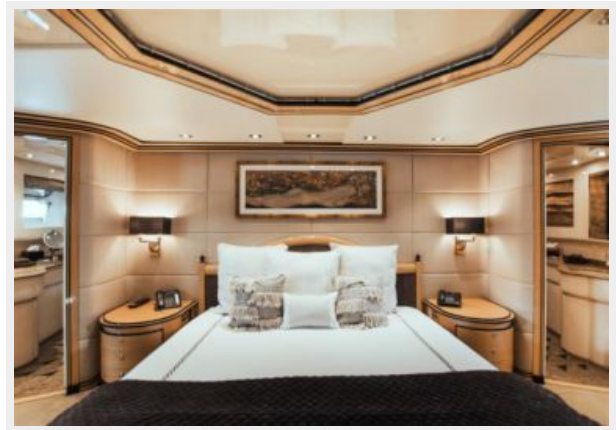


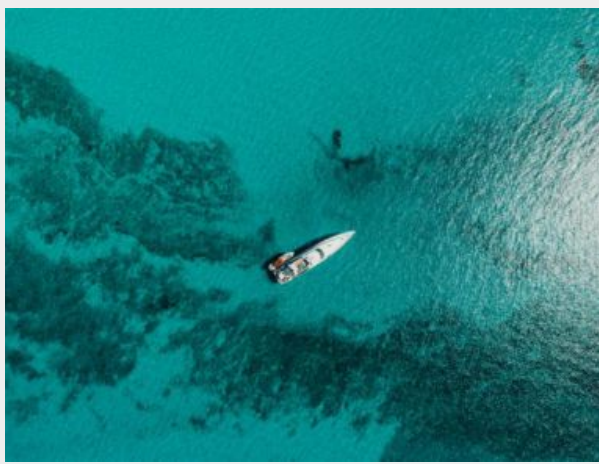














# CONTACTS

---

Andrey Shestakov, leading yacht broker of the sales department of Shestakov Yacht Sales Inc. Shestakov Yacht Sales Inc., the official representative of the Miami/Fort Lauderdale FL headquarters.

## Contact details

---

Email: [andrey@shestakovyachtsales.com](mailto:andrey@shestakovyachtsales.com)

Web: [shestakovyachtsales.com/en/](http://shestakovyachtsales.com/en/)

## Telephones

---

USA: +1(954)274-4435

## Office hours

---

Monday – Saturday: **9:00 - 21:00** EDT

Sunday: **closed**

## Address

---



Harbour Towne Marina, 850 NE 3rd St,  
STE 213, Dania, FL 33004