

MISS VICTORIA — VIKING



Судостроитель: VIKING

Год постройки: 2015

Модель: Катер для спортивной рыбалки

Цена: **ЦЕНА ЯХТЫ ПО ЗАПРОСУ**

Местонахождение: United States

Длина общая: 76' 0" (23.16m)

Ширина: 20' 3" (6.17m)

Макс. осадка: 5' 5" (1.65m)

Крейс. скорость: 32 Kts. (37 MPH)

Макс. скорость: 44 Kts. (51 MPH)

Купить **Miss Victoria — VIKING** а также выбрать подходящую вам яхту из нашего каталога яхт вам поможет опытный яхтенный брокер Андрей Шестаков. На сегодняшний день компания **Shestakov Yacht Sales Inc.** имеет большое количество яхт в собственном списке продаж, а также тесно сотрудничает со всеми крупными яхтенными производителями по всему миру.

Для того чтобы купить яхту **Miss Victoria — VIKING** а также проконсультироваться по любому вопросу связанному с покупкой, продажей, чартером яхт позвоните по телефону **+7(918)465-66-44**.

ОГЛАВЛЕНИЕ

ОГЛАВЛЕНИЕ	2
ХАРАКТЕРИСТИКИ	5
Основная информация	5
Размеры	5
Скорость, вместимость и масса	5
Размещение	5
Корпус и палуба	6
Информация о двигателе	6
ПОДРОБНОЕ ОПИСАНИЕ	7
Decor	7
Salon	8
Salon Day Head	9
Galley	9
Dinette	10
Master Stateroom	10
Master Stateroom Head	10
FWD Stateroom	11
FWD Stateroom Head	11
Starboard Stateroom	11
Starboard Head	12
Port Aft Stateroom	12
Port Stateroom	13
Port Head	13
Companionway	13
Flybridge	13
Cockpit	14
Deck	15
Engine Room	16

Hull	16
new Updates and Customization	17
Исключения	19
Отказ от ответственности	19
ФОТОГРАФИИ	20
miss victoria profile.jpg 2	20
miss victoria salon	20
miss victoria salon	20
miss victoria salon2	20
miss victoria salon5	20
miss victoria master 4	20
miss victoria master 3	21
miss victoria VIP	21
miss victoria VIP2	21
miss victoria master head	21
miss victoria head	21
miss victoria crew2	21
miss victoria dinnerware	22
miss victoria head	22
miss victoria crew	22
miss victoria galley	22
miss victoria electronics	22
miss victoria eng rm	22
miss victoria eng rm	23
КОНТАКТЫ	24
Контактная информация	24
Телефоны	24
Время работы	24
Адрес	24

ХАРАКТЕРИСТИКИ

Основная информация

Тип судна: Катер для спортивной рыбалки

Подкатегория: Convertible

Модельный год: 2015

Год постройки: 2015

Страна: United States

Верх: Hardtop W/Tower

Открытая палуба мостика: Да

Кубрик: Да

Размеры

Длина общая: 76' 0" (23.16m)

Ширина: 20' 3" (6.17m)

Макс. осадка: 5' 5" (1.65m)

Скорость, вместимость и масса

Крейс. скорость: 32 Kts. (37 MPH)

Крейсерская скорость поворота: 1950 Kts.

Макс. скорость: 44 Kts. (51 MPH)

Макс. скорость поворота: 2450 Kts.

Водоизмещение: 136000 Pounds

Вместимость воды: 425 Gallons

Вместимость сточного бака: 257 Gallons **Объем топливного бака:** 2945 Gallons

Размещение

Всего кают: 5

Всего ком. состава: 4

Корпус и палуба

Материал корпуса: Fiberglass

Материал палубы: Fiberglass

Цвет корпуса: White

Отделка корпуса: Aluminum

Информация о двигателе

Двигатели: 2

Производитель: MTU

Модель: 16V2000-M94

Тип двигателя: Inboard

Тип топлива: Diesel

ПОДРОБНОЕ ОПИСАНИЕ

Decor

Appliqued bedspread and shams in Master Stateroom

Custom decor

Salon door type catches on state room doors

Sofa upgraded style

Wrapped hatch carpet

Custom wallpaper material

Custom headliner material throughout

Brushed nickel hardware throughout

Brushed nickel coverplates for switches and receptables throughout

Satin nickel interior light trim throughout

LED interior lights throughout

Prestige decor

Galley accessory kit

Teak interior doors

Carpet throughout

Flybridge cushions in ultraleather brisa

Mezzanine seating with bolsters top and leg in ultraleather brisa

Armrest for mezzanine seating

Vessel sinks in heads with wall mounted faucets

Custom interior hardware throughout

Satin walnut interior finish throughout

Modern style interior wood design

Wallcover in headliner material

Master Stateroom walls in 3 sections, top and bottom in Majilite Hammered Metal Legend Parchment, Center in Majilite Novasuede Legend Sand

Companion walls in 3 sections, top and bottom in Majilite Hammered Metal Legend Parchment, Center in Majilite Novasuede Legend Sand

Hull sealers / barfront in Hammered metal Legend Parchment

Helm and companion chairs in ultraleather brisa

Viking Yachts Symbol on all hand towels and on an accent pillow for each stateroom

All faucets are deck mounted, except MSR which is wall mounted

All heads with Kohler rectangular sinks

All Staterooms with crown molding

Water delivery kit with tool set

Salon

Electric salon door

Overhead teak handrail

Carpet runner, full, canvas

Dimmers for quartz lights

Teak trim where attic meets carpet

Custom Amtico flooring

55" Samsung pop up TV in entertainment center

Teak valances

AC receptacle under dinette table

Teak strips in headliner

Day head in salon

Thicker side profile for cocktail and dinette table

Bose V35 entertainment system with Blu Ray

Carpet runners same color as 76619

Light block above dinette. Block to follow the shape of the table with 2 lights inside

Salon Day Head

Mirror ceiling

Custom Amtico flooring

Brushed nickel towel bars and rings

Satin nickel faucet

Vanity tops to be sequoia brown, leathered

Hammered nickel sink

Galley

Dishwasher

Trash compactor

110V outlet next to switch on bottom of upper cabinet above sink

Undermount stainless steel sink

Mount range burner surface

Amtico flooring

Sating nickel faucet

Backsplash mirror

Recessed cooktop in granite with lids

Small storage cabinet against outboard wall

Granite countertop sequoia brown

Crown molding over galley and dinette areas

Dinette

Teak table with teak pedestal

AC receptacle under table

Dimmer on overhead led lights

Additional TV over dinette (46" LED TV)

Master Stateroom

Mattress viking slumber #8

Additional telephone outlet

Teak on end table tops

55" Flat Screen TV

Frame around TV

Rope lightning in soffit

Custom L-Shape seating area

Extended teak wall covering above desk area

Mirror above desk area

Full sofa

Master Stateroom Head

Mirror ceiling

Mirror around upper vanity insert

Teak face on lower vanity

Custom Amtico flooring

Shower fixtures in satin nickel

Towel bars and rings in brushed nickel

Satin nickel faucet

Vanity tops in sequoia brown, leathered

FWD Stateroom

Mattress viking slumber #6

26" Flat screen TV

FWD Stateroom Head

Mirror ceiling

Teak face on lower vanity

Mirror around upper vanity insert

Custom Amtico flooring

Satin nickel shower fixtures

Brushed nickel towel bars and rings

Brushed aluminum shower door

Satin nickel faucet

Vanity tops in sequoia brown, leathered

Starboard Stateroom

Teak top on locker

19" Flat screen TV

12V DVD/CD Stereo

Dimmer on overhead led lights

Mattress viking slumber #6

Side by side bunk beds

Entry door moved to washer and dryer do

Starboard Head

Mirror ceiling

Mirror around upper vanity insert

Teak face on lower vanity

Custom amtico flooring

Chrome shower door

Shower fixtures in satin nickel

Towel bars and rings in brushed nickel

Satin nickel faucet

Vanity tops in sequoia brown, leathered

Port Aft Stateroom

19" Flat screen TV

12V DVD/CD Stereo

Mattress viking slumber #6

Port Stateroom

12V Stereo/CD/DVD player

Teak top on locker storage

19" Flat screen TV

Large bunk bed

Upper bunk pullman style

Port Head

Mirror ceiling

Teak face on lower vanity

Custom antico flooring

Chrome shower door

Satin nickel shower fixtures

Brushed nickel towel bars and rings

Faucet in satin nickel

Vanity tops in sequoia brown, leathered

Companionway

Costa canvas carpet runner with step covers

Vertical teak strips between wall panels

Flybridge

Electronic trolling valves

Recessed electronic valves

A/C at Helm

Hatch over bridge ladder opening

Push button for electronic boxes

Fresh water outlet on bridge

Bridge freezer box

VHF Radio ICOM-604

Refrigerate bridge drink box

Dedicated batteries for electronics

Teak helm pod

Switch in radiobox for electronic drop-down overhead box in hardtop

Single lever control handles with bow thruster button in handles

MTU bridge controls

Handrail on side of helm console above helm access door

Release Marine upgraded helm chairs

Clam shells on electronic box lids

Compass installed on top of console

Watermaker display at helm

Split lids for radio boxes

Cockpit

Mezzanine in cockpit

Crushed ice machine with discharge in port mezzanine box W/new compressor

(2) Rod holders in each haunch (for a total of 4) 3 additional on tower leg

Bluewater Fighting chair

Awlgrip lazarette

Plumb transom box

Live well with glass window and lights

Y-Valve for fresh and salt water washdowns

Refrigerated cockpit step box

Transom custom littering

Transom coaming with gate and fish box

Teak cockpit sole

Storage lockers under port and starboard coamings

Split lid for cockpit fish box

Cruisair "cool breeze" mezzanine and ladder treads

Tri colored lights in overhang (red, white and blue)

(4) step armstrong ladder under transom door

Deck

Fresh water washdown at bow inside anchor locker

White rub rail

Anchor bracket in anchor locker

Recessed trim tab covers

SS gas springs for anchor locker hatch

Salon forward window mask

Side mounted handrails, following top of salon window

Lewmar C4 hydraulic capstan

Extended handrails above salon window 48" wrapping around house

White rope lightning under bridge forward overhang

Oval style port light

Bottom painted black

Bootstripe same as 70722

Tri-colored rope lightning under forward bridge overhang: Red, White and Blue

Custom anchor chute

Engine Room

Awlgrip brass thru-hulls and sea strainers in it plus forward bilges

Dual power steering pumps IPO of standard single on Port Engine

Headhunter fresh water pump

110V outlet on aft bulkhead at entranceway

Clear acrylic shaft log access covers

Tool boxes, 16" wide

All pumps snow white color, except fresh water pump

Generator gas-water separators for both generators

Charles autophase C-Power shore power transformer

1400 GPD Watermaker with auto backflush

Hull

Additional Forward Fuel tank (3 tanks total)

Fiberglass side thru-hulls

Prop pockets

Hydraulic bow thruster

Seakeeper Gyro SK26

Hull color snow white

Boot stripe viking standard black

Bottom painted viking black

Boot stripe black

new Updates and Customization

2017 UPDATES INCLUDE:

Palm Beach Towers Tower

G7 SAT HD Dome

Expansion VHF radios

All New Garmin Electronics

Cockpit VHF speakers

Hydraulic Outrigger package

Fusion bridge stereo

Refit of both glove boxes

Air compressor

Latest FLIR camera system

All antennas on buggy top

Custom flat black paint on buggy top

Entire hydraulic system gone through

All bridge chair cushions replaced -2018

Custom Bridge Lounge table Bluewater

Air conditioning added under console and brow

EZ2CY enclosure

Bunk added in pantry (6th stateroom) 2018

Casper mattress (6th stateroom)

Carpet runners throughout 2018

Cellinoids for heads

Direct TV added to new pantry stateroom 2018

WIFI System

411 Transducer

Chirp boxes

All carpets, pillows, shams, mats and couches steam cleaned 2019

Custom carbon fiber dash

17" Garmin display cockpit

Teak bridge ladder steps

Cockpit freezer

Lumishore underwater lights (10) Full color

Updated 26SK Seakeeper w/warranty until July 2020

Faux Toerail

Complete Bottom refit

All bearings

Props tuned

Micron CSC bottom paint

Prop speed

Temp sensor and wheel

Complete Hull and topsides wax

Engine Alignment

Teak sanded

Brow cover

Transom cover

Watermaker membranes 2019

Glasscoat on outriggers

12 & 24volt plugs in cockpit

Warranty added on engines through Feb. 2020 or 3000 hrs

Seakeeper warranty through July 2020 or 3000 hrs

Исключения

При продаже яхты исключаются личные вещи владельца.

Отказ от ответственности

Компания предоставляет описание судна или яхты добросовестно, но не может гарантировать точность этой информации, а также не ручается за техническое состояние. Покупатель должен проинструктировать своих агентов или оценщиков исследовать представленную информацию более подробно, по собственному желанию. Продажа судна или яхты, изменение цены или снятие с продажи будет происходить без предварительного уведомления.

ФОТОГРАФИИ

miss victoria profile.jpg 2



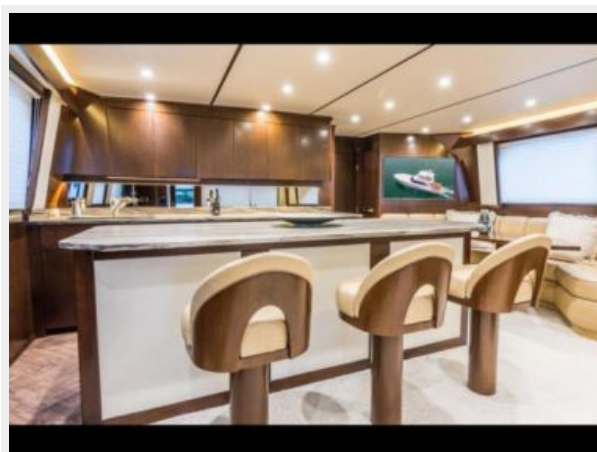
miss victoria salon



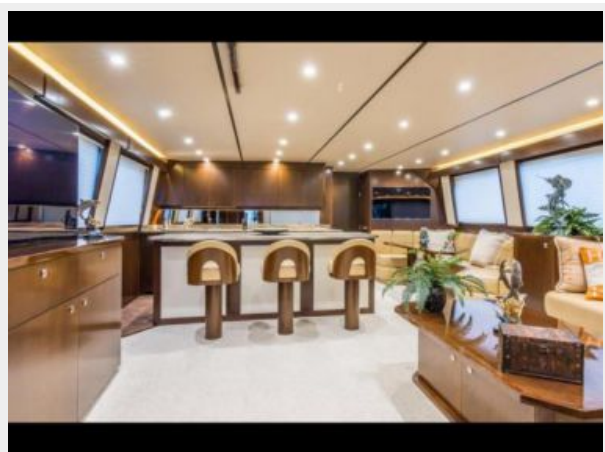
miss victoria salon



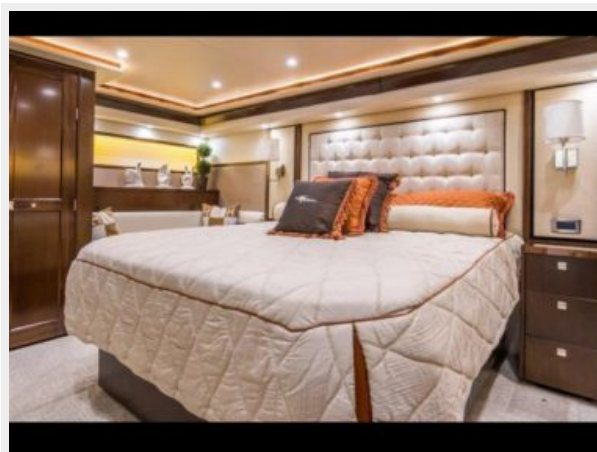
miss victoria salon2



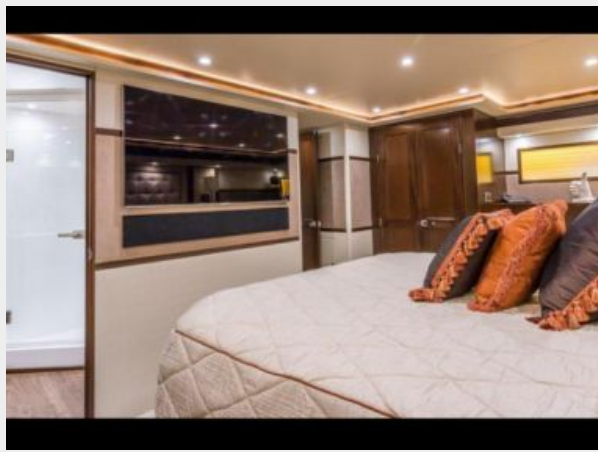
miss victoria salon5



miss victoria master 4



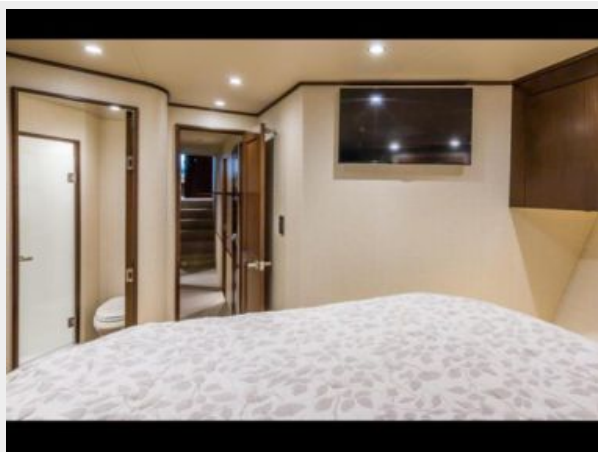
miss victoria master 3



miss victoria VIP



miss victoria VIP2



miss victoria master head



miss victoria head



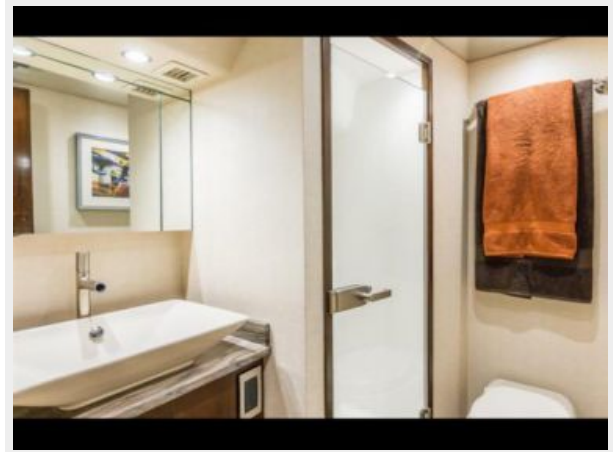
miss victoria crew2



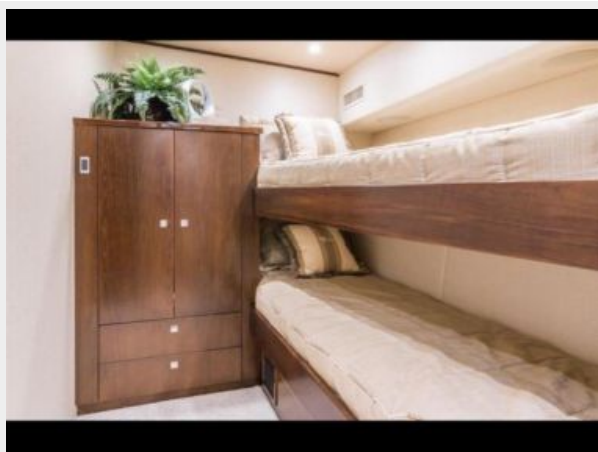
miss victoria dinnerware



miss victoria head



miss victoria crew



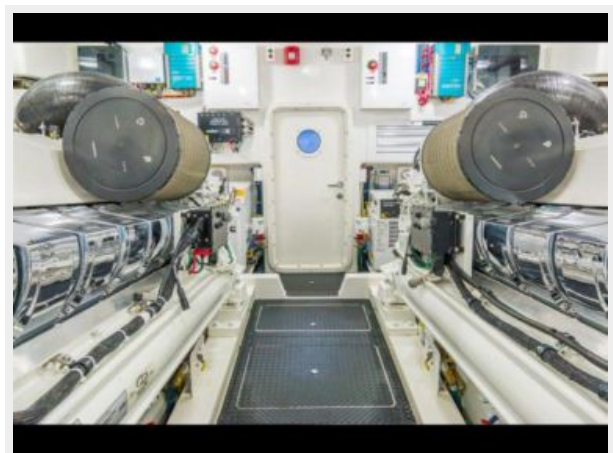
miss victoria galley



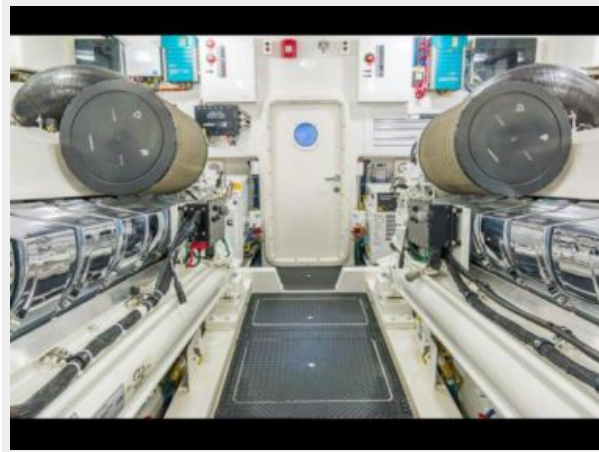
miss victoria electronics



miss victoria eng rm



miss victoria eng rm



КОНТАКТЫ

Андрей Шестаков (Andrey Shestakov) – ведущий яхтенный брокер отдела продаж яхт и судов компании Shestakov Yacht Sales Inc. Официальный представитель Shestakov Yacht Sales Inc. для русскоговорящих клиентов в центральном офисе компании в Майами/Форт Лодердейл/Флорида/США.

Контактная информация

Email: andrey@shestakovyachtsales.com

Web: shestakovyachtsales.com

Телефоны

Краснодарский край: **+7(918)465-66-44**

США, Майами, Флорида: **+1(954)274-4435**

Время работы

Понедельник – Суббота: **9:00 - 21:00**
EDT

Воскресенье: **Закрито**

Адрес



Harbour Towne Marina, 850 NE 3rd St,
STE 213, Dania, FL 33004