

## SASQUATCH — HATTERAS



**Builder:** HATTERAS

**Year Built:** 1981

**Model:** Motor Yacht

**Price:** PRICE ON APPLICATION

**Location:** United States

**LOA:** 61' 0" (18.59m)

**Beam:** 18' 2" (5.54m)

**Cruise Speed:** 15 Kts. (17 MPH)

**Max Speed:** 18 Kts. (21 MPH)

Our experienced yacht broker, Andrey Shestakov, will help you choose and buy a yacht that best suits your needs **SASQUATCH — HATTERAS** from our catalogue. Presently, at Shestakov Yacht Sales Inc., we have a wide variety of yachts available on our sale's list. We also work in close contact with all the big yacht manufacturers from all over the world.

If you would like to buy a yacht **SASQUATCH — HATTERAS** or would like help answering any questions concerning purchasing, selling or chartering a yacht, please call **+1(954)274-4435**

# TABLE OF CONTENTS

|                              |    |
|------------------------------|----|
| TABLE OF CONTENTS            | 2  |
| SPECIFICATIONS               | 4  |
| Basic Information            | 4  |
| Dimensions                   | 4  |
| Speed, Capacities and Weight | 4  |
| Accommodations               | 4  |
| Hull and Deck Information    | 4  |
| Engine Information           | 5  |
| DETAILED INFORMATION         | 6  |
| VESSEL WALKTHROUGH           | 6  |
| GALLEY                       | 6  |
| DECKS                        | 6  |
| ELECTRONICS                  | 7  |
| ENGINES AND MECHANICAL       | 7  |
| A/C SYSTEM                   | 8  |
| ELECTRICAL SYSTEM            | 8  |
| BROKER COMMENTS              | 8  |
| Exclusions                   | 9  |
| Disclaimer                   | 9  |
| PHOTOS                       | 10 |
| At dock                      | 10 |
| At dock                      | 10 |
| Transom                      | 10 |
| Flybridge                    | 10 |
| Flybridge                    | 11 |
| Flybridge                    | 11 |
| Galley                       | 11 |
| Galley                       | 11 |

---

|                 |    |
|-----------------|----|
| Dinette         | 12 |
| Dining          | 12 |
| dining          | 12 |
| Salon           | 12 |
| Salon           | 13 |
| Salon           | 13 |
| Master          | 13 |
| Master          | 13 |
| Master Head     | 14 |
| Master Head     | 14 |
| Helm            | 14 |
| Helm            | 14 |
| Helm            | 15 |
| Helm            | 15 |
| Crew            | 15 |
| Crew Head       | 15 |
| Engine          | 16 |
| Engine          | 16 |
| CONTACTS        | 17 |
| Contact details | 17 |
| Telephones      | 17 |
| Office hours    | 17 |
| Address         | 17 |

---

# SPECIFICATIONS

---

## Basic Information

---

**Category:** Motor Yacht

**Model Year:** 1981

**Year Built:** 1981

**Country:** United States

**Fly Bridge:** Yes

## Dimensions

---

**LOA:** 61' 0" (18.59m)

**Beam:** 18' 2" (5.54m)

## Speed, Capacities and Weight

---

**Cruise Speed:** 15 Kts. (17 MPH)

**Max Speed:** 18 Kts. (21 MPH)

**Displacement:** 85000 Pounds

**Water Capacity:** 350 Gallons

**Fuel Capacity:** 1100 Gallons

## Accommodations

---

**Total Cabins:** 3

**Total Heads:** 2

**Crew Cabin:** 1

**Crew Heads:** 1

## Hull and Deck Information

---

**Hull Material:** Fiberglass

---

## Engine Information

---

**Engines:** 2

**Manufacturer:** Detroit Diesel

**Model:** 12-71 TI

**Fuel Type:** Diesel

---

# DETAILED INFORMATION

---

## VESSEL WALKTHROUGH

---

"**Sasquatch**" a classic Hatteras Motor Yacht offers the 3 staterooms with an office/study below. As you step from the starboard side deck below is the study with built in desk, large storage room with mirrored doors and a love seat. Forward is the crew quarters with ensuite head and stacked berths. Further aft is the laundry area with a Maytag washer and dryer to starboard. To port is the head for the double berth guest stateroom. The Master Stateroom is full beam with a king size bed and built in vanity draws, cabinetry, a large ensuite head with tub and a spacious Cedar lined closet. A companionway to starboard side of the office leads up to the pilot house which has a large bench seat, port and starboard doors that go to side decks .and an under counter freezer and plenty of storage. The galley was recently renovated with cabinetry, countertops , and appliances. As you go further aft the wide open salon has wrap around seating, dining table for family and friends, a wet bar with U-Line icemaker and entertainment console. A recent refit on the Salon bulkhead features a new large window and glass door leading to the aft deck. The flybridge is spacious with plenty of seating for entertaining family and guests.

## GALLEY

---

- Amtico Faux wood planked sole
- Custom raised panel etched white cabinets
- Corian counter top & sink
- Single lever spigot, spray hose, garbage disposal
- G.E. 4 burner range w/oven
- Kitchen Aid stainless dbl. door refrig/freezer
- Kitchen Aid dish washer
- Panasonic microwave
- Jenn Air trash compactor

## DECKS

---

- Custom FB fiberglass hard top
- Custom spray rails
- Hatteras anchor pulpit
- Galley Maid BBHW windless
- 65Lb Fortress anchorA
- 85Lb Danforth Hi-tensile
- 300 Ft Chain rode & 200 Ft nylon rode
- Swim platform w/ ladder
- (2) Marquipt tide ride sea-stairs- 5 & 7 step

- 13 ft Boston Whaler w/ 50 hp Yamaha
- Marquipt Davit
- Docking lights Fwd & Aft
- 2-Dunnage boxes on foredeck
- Dual air horns
- P & S fender racks on bow
- Bimini extension off FB hardtop
- Bimini extension off aft deck

## ELECTRONICS

---

### New Electronics (4/15)

- Garmin 8212 12" touchscreen display with pinch to zoom functions (2):  
Includes BlueChart g2 US coastal maps built in  
Includes GPS antenna and NMEA2000 kitMR 18xHD 4kW 18" radome radar
- Garmin GMR 18xHD 4kW 18" radome radar
- Garmin GSD 24 Sounder module
- Miscellaneous nmea2k connectors
- RD33 4.3" Color LCD Navigation Data Display (4)
- Ultrasonic weather station. Measures wind speed and direction, barometric pressure, air temp, humidity, heading and pitch/roll
- Icom IC-M506 VHF w/ hailer (4)
- ACR RCL-100D 12VDC remote control spotlight includes point pad and URC controller
- ACR URP-102 Point Pad for RCL-100D searchlights
- Wave Wifi RougePro with stainless steel barrel
- Shakespeare 5309-R VHF antenna 23' 9dB two piece
- KVH TV5 with North American LNB
- Eagle Aspen 3X8 powered multiswitch
- Power supply for multiswitch S2180CE-PS
- Direct TV H25 Receiver SWM and non- SWM non DVR
- Samsung 40" television
- Samsung 32" television (2)
- Jabasco Flangemount Exhaust Blower (2) P/N 36760-0115
- B744V-8G fits Garmin 8 pin (GSD24). Depth, Speed Temp. 600W. Paddle wheel removable
- DST-800-BV-N2 Bronze thru hull. From 0-22 degree deadrise. Depth, speed, temp
- 110 VAC to 24 VDC power supply for TV series antennas P/N KVH-72-0669

## ENGINES AND MECHANICAL

---

- Twin 650 Hp. 12-71 TI Detroit Diesels- Port: 1922.4 Stbd: 1922.9 Hrs. SMOH

- (2) generators Port: 1550.6 Stbd: 1438.3 3/20/19
- Air Seps
- Dual Racor fuel filters
- Leguin Filters
- Engines Awlgrip painted
- Engine room Awlgrip painted
- Emergency stops
- Oil change system
- Glendinning sync
- Co2 Fire system
- 40 gal water heater
- Naiad stabilizers
- 110V air compressor
- 4 Bilge pumps
- High water alarm
- Hynautic hydraulic controls & steering
- Spare props & stub shaft
- New exhaust system (5/13)
  
- Sidepower electric bow thruster

---

## A/C SYSTEM

---

(2) New A/C condensing units (10/13)

---

## ELECTRICAL SYSTEM

---

- 2-21 KW Kohler generators w/ sound shields 1171 & 1174 Hrs SMOH
- 2-50 Amp shore cables
- 32 V DC electrical system
- 8-8 volt batteries in covered boxes
- 100 Amp alternators on mains
- 40 Amp Sentry battery charger
- Battery parallel switch
- 2- 50 Amp & 1-30 Amp Iso/ boost transformers
- 2-50 Amp shore inlets P&S

---

## BROKER COMMENTS

---

This classic 61 Hatteras Motoryacht offers a custom layout with only 3 staterooms and 3 heads.



The 4th has been converted to a large office/study with a built-in desk and large storage room with mirrored doors and a love seat. Totally updated "galley-up" kitchen including new appliances and Corian counter top. Twin 650/hp Detroit engines. New electronics in 2015. Gorgeous custom flybridge hardtop. Owners live-aboard during Season proving her to be a perfect liveaboard yacht. Located in Palm Beach.

## **Exclusions**

---

Owner's personal belongings.

## **Disclaimer**

---

The Company offers the details of this vessel or yacht in good faith but cannot guarantee or warrant the accuracy of this information nor warrant the condition of the vessel. A buyer should instruct his representatives, agents, or his surveyors, to investigate such details as the buyer desires validated. This vessel or yacht is offered subject to prior sale, price change, or withdrawal without notice.

# PHOTOS

At dock



At dock



Transom



Flybridge



**Flybridge**



**Flybridge**



**Galley**



**Galley**



**Dinette**



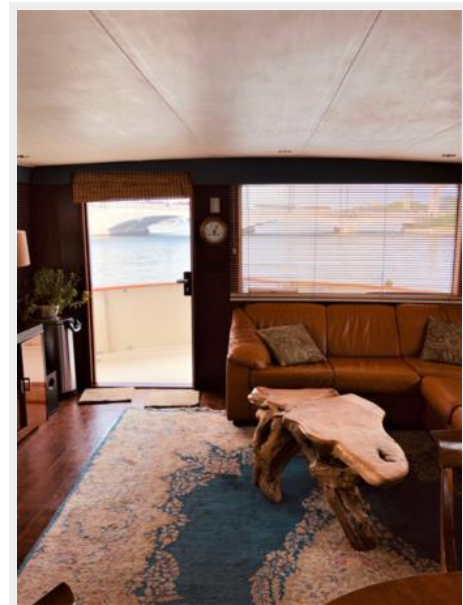
**Dining**



**dining**



**Salon**



Salon



Salon



Master



Master



**Master Head**



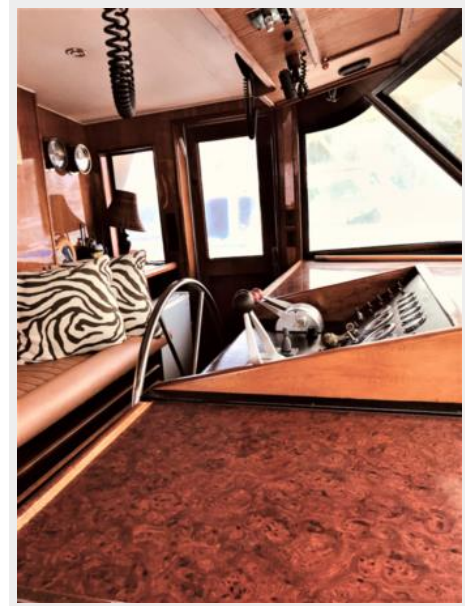
**Master Head**



**Helm**



**Helm**



Helm



Helm



Crew



Crew Head



**Engine**



**Engine**





---

# CONTACTS

---

Andrey Shestakov, leading yacht broker of the sales department of Shestakov Yacht Sales Inc. Shestakov Yacht Sales Inc., the official representative of the Miami/Fort Lauderdale FL headquarters.

---

## Contact details

---

Email: [andrey@shestakovyachtsales.com](mailto:andrey@shestakovyachtsales.com)

Web: [shestakovyachtsales.com/en/](http://shestakovyachtsales.com/en/)

---

## Telephones

---

USA: +1(954)274-4435

---

## Office hours

---

Monday – Saturday: **9:00 - 21:00** EDT

Sunday: **closed**

---

## Address

---



Harbour Towne Marina, 850 NE 3rd St,  
STE 213, Dania, FL 33004