

ATHENA — SUNREEF



Судостроитель: [SUNREEF](#)

Год постройки: 2017

Модель: Катамаран

Цена: **ЦЕНА ЯХТЫ ПО ЗАПРОСУ**

Местонахождение: Turkey

Длина общая: 68' 0" (20.73m)

Ширина: 34' 3" (10.44m)

Макс. осадка: 3' 8" (1.12m)

Крейс. скорость: 16 Kts. (18 MPH)

Макс. скорость: 24 Kts. (28 MPH)

Купить **Athena — SUNREEF** а также выбрать подходящую вам яхту из нашего каталога яхт вам поможет опытный яхтенный брокер Андрей Шестаков. На сегодняшний день компания **Shestakov Yacht Sales Inc.** имеет большое количество яхт в собственном списке продаж, а также тесно сотрудничает со всеми крупными яхтенными производителями по всему миру.

Для того чтобы купить яхту **Athena — SUNREEF** а также проконсультироваться по любому вопросу связанному с покупкой, продажей, чартером яхт позвоните по телефону **+7(918)465-66-44**.

ОГЛАВЛЕНИЕ

ОГЛАВЛЕНИЕ	2
ХАРАКТЕРИСТИКИ	4
Основная информация	4
Размеры	4
Скорость, вместимость и масса	4
Размещение	4
Корпус и палуба	5
Информация о двигателе	5
ПОДРОБНОЕ ОПИСАНИЕ	6
Description	6
Highlights	6
Exterior	6
Aft Deck	7
Salon	7
Master Stateroom	8
Master Head	8
Galley	8
Starboard Stateroom 1 (VIP)	9
Starboard Guest Head 1 (VIP)	9
Starboard Stateroom 2	9
Starboard Guest Head 2	10
Port Stateroom	10
Port Guest Head	11
Flybridge	11
Helm/Electronics	11
Crew Quarters	12
Engine Room	12
Exclusions	13

Исключения	13
Отказ от ответственности	13
ФОТОГРАФИИ	14
КОНТАКТЫ	23
Контактная информация	23
Телефоны	23
Время работы	23
Адрес	23

ХАРАКТЕРИСТИКИ

Основная информация

Тип судна: Катамаран	Модельный год: 2017
Год постройки: 2017	Страна: Turkey
Верх: Electronic Sunroof	Открытая палуба мостика: Да

Размеры

Длина общая: 68' 0" (20.73m)	Ширина: 34' 3" (10.44m)
Макс. осадка: 3' 8" (1.12m)	

Скорость, вместимость и масса

Крейс. скорость: 16 Kts. (18 MPH)	Макс. скорость: 24 Kts. (28 MPH)
Чистый вес: 58 Pounds	Вместимость воды: 264 Gallons
Объем топливного бака: 1849 Gallons	

Размещение

Всего кают: 4	Всего коек: 5
Спальные места: 8	Всего ком. состава: 4
Каюты экипажа: 1	Койки экипажа: 2
Спальных мест экипажа: 2	Комм. состав экипажа: 1

Корпус и палуба

Материал корпуса: Fiberglass

Материал палубы: Teak

Комплектация корпуса: Катамаран

Дизайнер корпуса: Sunreef Yachts

Дизайнер экстерьера: Sunreef Yachts

Дизайнер интерьера: Sunreef Yachts

Информация о двигателе

Двигатели: 2

Производитель: Volvo

Модель: IPS 1050

Тип двигателя: Inboard

Тип топлива: Diesel

ПОДРОБНОЕ ОПИСАНИЕ

Description

Not for sale to US residents in US waters.

Highlights

- 4 Staterooms, 4 Heads + Crew Quarters with Galley Down and Full Beam Master on Main Level
- Twin Volvo Penta IPS 1050 Engines at 800HP Each (739 Hours as of 3/2019)
- Twin Cummins 17.5KW Generators (2252 and 2238 Hours as of 3/2019)
- (2) VOLVO Dynamic Docking Positioning Stations
- Teak Deck on All Exterior
- Bow Thruster w/ Controls
- Jacuzzi on Bow
- Large Aft Garage w/ Dinghy Launching System
- Hydraulic Gangway (Passerelle)
- Sea Recovery Aquamatic 1400 GPD Watermaker
- Hand Shower on Aft Deck
- KVH Satellite TV6
- Internet 4G/LTE/WiFi
- Freezer in Aft Garage
- (2) Outside Cameras for Docking
- Bar on Flybridge w/ BBQ
- Dumbwaiter Lift from Galley, to Salon, to Flybridge
- Custom Interior w/ Exclusive Finishing
- Bose Sound System Throughout
- Electric Blinds in Salon and Master Stateroom
- 65" TV in Salon
- Extra Isolation in Master Stateroom Between Salon, Ceiling, and Flooring
- Magic Glass in Master Head
- Fire Alarms in All Staterooms
- Alfa Laval Diesel Fuel Separator Filter
- Extra Insulation in Both Engine Rooms
- Fire Alarm in Engine Rooms
- Fire Extinguishers in Engine Rooms

Exterior

- Teak Deck on All Exterior: **UPGRADE**

- Jacuzzi on Bow: **UPGRADE**
- Large Aft Garage w/ Dinghy Launching System: **UPGRADE**
- Hydraulic Gangway (Passerelle): **UPGRADE**
- (2) Outside Cameras for Docking: **UPGRADE**
- Freezer and Storage in Garage: **UPGRADE**
- E-Glass Laminate on Hull, Deck, and Bridge
- Port Lights with Windows
- Swim Ladder
- LED Lighting
- Round Sitting Cushions on Bow
- Freshwater Shower on Bow and Transom
- Hull and Deck in White Gel Coat
- Galvanized Anchor w/ 120m Chain
- Additional Anchor
- Cleats and Mooring Ropes at Transom
- Stainless Steel Hailing Port Inscriptions
- Backlit Logo
- Wide Boarding Steps on Port and Starboard
- Sun Bathing Cushions on Bow

Aft Deck

- Hand Shower: **UPGRADE**
- Teak Deck: **UPGRADE**
- Reclining Sofa with Cushions and Table
- Large Walk-Arounds to Bow
- Stairs to Flybridge
- Large Sliding Glass Doors to Salon
- Cupboard for Shoes Under Stairs

Salon

- Custom Interior w/ Exclusive Finishing: **UPGRADE**
- Bose Sound System Throughout: **UPGRADE**
- Electric Blinds: **UPGRADE**
- 65" TV: **UPGRADE**
- Dumbwaiter Lift: **UPGRADE**
- LED Lighting
- Engine Control on Dual Navigation Screens
- Cabinets Below TV
- Large Sliding Glass Doors to Aft Deck and Sides
- Safe

- Bar
- Quickstep Flooring
- Furniture and Panels - Waterproof Plywood
- Custom Curtains
- U-Shaped Couch w/ Storage
- Shelving and Storage
- Chandelier
- Glass Coffee Table
- (2) Chairs w/ Small Table

Master Stateroom

- Electric Blinds: **UPGRADE**
- Extra Isolation in Master Stateroom Between Salon, Ceiling, and Flooring: **UPGRADE**
- Fire Alarm: **UPGRADE**
- Bose Sound System: **UPGRADE**
- LED Lighting
- Full Beam
- On Main Deck
- Queen Berth w/ Custom Headboard
- Plexi Glass Mirror Behind Berth
- (2) Glass Nightstands
- Large Hull Windows
- Private Access to Head
- Vanity to Port w/ Chair and Mirror
- Counter w/ Storage Under
- Door to Side Deck
- Quickstep Flooring

Master Head

- Magic Glass in Master Head: **UPGRADE**
- White Tile Flooring: **UPGRADE**
- Electric Toilet w/ Freshwater Flush
- Water Outlet Next to Toilet for Water Spray
- Walk In Shower w/ Removable Shower Wand
- Shelving in Shower
- Sink w/ Backlit Mirror

Galley

- Dumbwaiter Lift: **UPGRADE**
- Galley-Down Layout
- LED Lighting
- Quickstep Flooring
- Ora-Ito Microwave
- (4)-Burner Stove Top
- Oven
- Refrigerator w/ Freezer
- Dishwasher
- Cooker Hood
- Access to Supply Room w/ Washer/Dryer and Cleaning Supplies

Starboard Stateroom 1 (VIP)

- Bose Sound System: **UPGRADE**
- Fire Alarm: **UPGRADE**
- Quickstep Flooring
- LED Lighting
- Queen Berth w/ Headboard
- Plexi Glass Mirror Behind Berth
- Seating Ledge Under Windows
- Private Access to Head
- (2) Side Tables/Ledge
- Steps to Berth
- Padded Panels

Starboard Guest Head 1 (VIP)

- White Tile Flooring: **UPGRADE**
- Electric Toilet w/ Freshwater Flush
- Water Outlet Next to Toilet for Water Spray
- LED Lighting
- (2) Large Sinks
- Storage Under Vanity
- Glass Shower Enclosure
- Walk-In Shower w/ Removable Shower Wand
- Bench in Shower
- Towel Rack

Starboard Stateroom 2

- Bose Sound System: **UPGRADE**
- Fire Alarm: **UPGRADE**
- Quickstep Flooring
- LED Lighting
- Lighting Under Berth
- Double Berth w/ Headboard
- Plexi Glass Mirror Behind Berth
- (2) Side Tables/Ledge
- Private Access to Head
- Steps to Berth
- Padded Panels
- Countertop Under Windows w/ Storage Below
- Large Hull Windows

Starboard Guest Head 2

- White Tile Flooring: **UPGRADE**
- Electric Toilet w/ Freshwater Flush
- Water Outlet Next to Toilet for Water Spray
- LED Lighting
- Large Sink
- Full Vanity w/ Mirror
- Glass Shower Enclosure w/ Removable Shower Wand
- Walk-In Shower
- Ledge in Shower
- White Tile Flooring

Port Stateroom

- Bose Sound System: **UPGRADE**
- Fire Alarm: **UPGRADE**
- Quickstep Flooring
- LED Lighting
- Lighting Under Berth
- (2) Twin Berths w/ Headboard
- Plexi Glass Mirror Behind Berth
- (2) Side Tables/Ledge
- Private Access to Head
- Steps to Berth
- Padded Panels
- Countertop Under Windows w/ Storage Below
- Large Hull Windows

Port Guest Head

- White Tile Flooring: **UPGRADE**
- Electric Toilet w/ Freshwater Flush
- Water Outlet Next to Toilet for Water Spray
- LED Lighting
- Large Sink
- Full Vanity w/ Mirror
- Glass Shower Enclosure w/ Removable Shower Wand
- Walk-In Shower
- Ledge in Shower
- White Tile Flooring

Flybridge

- Teak Deck: **UPGRADE**
- Bose Sound System: **UPGRADE**
- Bar w/ BBQ: **UPGRADE**
- Dumbwaiter Lift: **UPGRADE**
- Teak Table with Cup Holders in Middle: **UPGRADE**
- (4) Chairs w/ Cushions
- (2) Helm Chairs
- Bench w/ Cushion - Forward
- (5) Sun Bathing Cushions - Forward
- Hard Top w/ Sunroof Openings
- Ladder to Top

Helm/Electronics

- (2) VOLVO Dynamic Docking Positioning Stations: **UPGRADE**
- Bow Thruster Controls: **UPGRADE**
- KVH Satellite TV6: **UPGRADE**
- Internet 4G/LTE/WiFi: **UPGRADE**
- Raymarine 470sc Night Vision: **UPGRADE**
- (2) 16.5" Raymarine Multifunction Color Display Screens
- Compass
- Raymarine GPS
- Raymarine Radar 3K
- Raymarine Autopilot w/ Gyrocompass
- Raymarine Smart Controller
- VHF Ray260 Handset & Speaker
- (2) Sailor GMDSS

- Outdoor Walkie Talkie
- Raymarine Integrated System
- Rotating Deck Search Light
- Hydraulic Steering Wheel
- (2) Emergency Tillers
- Navigation Lights

Crew Quarters

- Fire Alarm: **UPGRADE**
- (2) Single Berths
- Table/Ledge Separating Berths
- (2) Reading Lights
- Padded Panels
- LED Lighting
- Private Access to Head
- Electric Toilet w/ Freshwater Flush
- Full Vanity w/ Mirror and Storage

Engine Room

- Twin Volvo Penta IPS 1050 Engines at 800HP Each (739 Hours as of 3/2019): **UPGRADE**
- Twin Cummins 17.5KW Generators (2252 and 2238 Hours as of 3/2019): **UPGRADE**
- Bow Thruster: **UPGRADE**
- Sea Recovery Aquamatic 1400 GPD Watermaker: **UPGRADE**
- Prop Line Cutter: **UPGRADE**
- Alfa Laval Diesel Fuel Separator Filter
- Air Conditioning/Heating System 42,000 BTU
- AC Blowers
- Extra Insolation
- Fire Alarm
- Fire Extinguishers
- Shore Power Cord
- Shore Power Inlet
- DC-24V
- Main Switchboard
- 24V House Batteries
- (2) Starting Batteries
- DC Distribution
- Starting Battery Chargers
- (2) Manual Bilge Pump
- Additional Bilge Pump

- Additional Drainage for Cold Devices
- Additional Filtration on Freshwater Inlet
- 24V Windlass

Exclusions

- All Owner's Personal Items

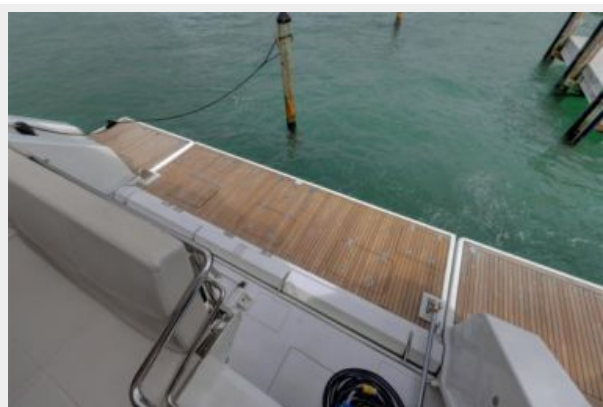
Исключения

При продаже яхты исключаются личные вещи владельца.

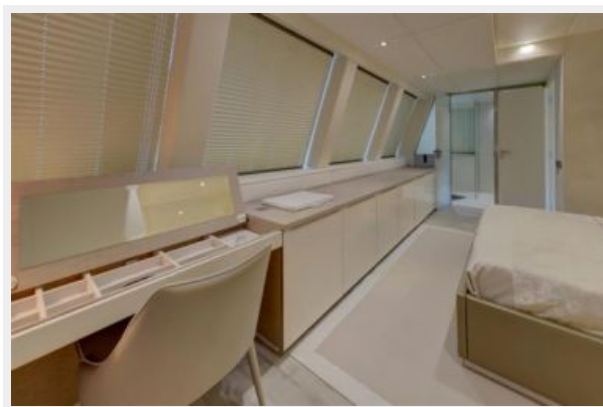
Отказ от ответственности

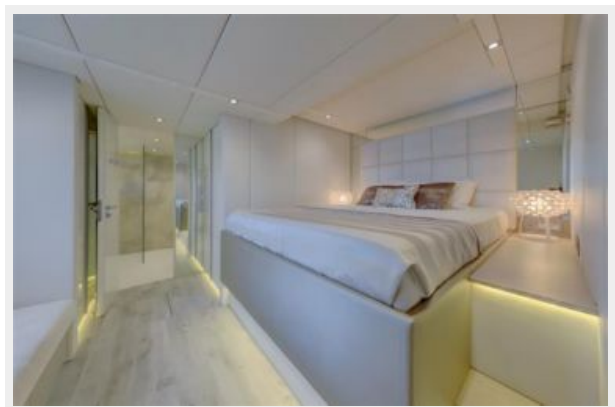
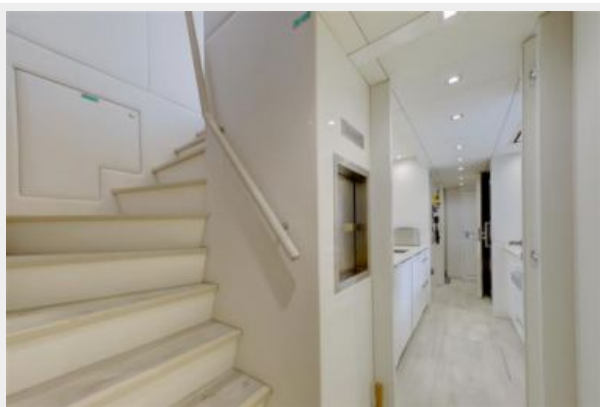
Компания предоставляет описание судна или яхты добросовестно, но не может гарантировать точность этой информации, а также не ручается за техническое состояние. Покупатель должен проинструктировать своих агентов или оценщиков исследовать представленную информацию более подробно, по собственному желанию. Продажа судна или яхты, изменение цены или снятие с продажи будет происходить без предварительного уведомления.

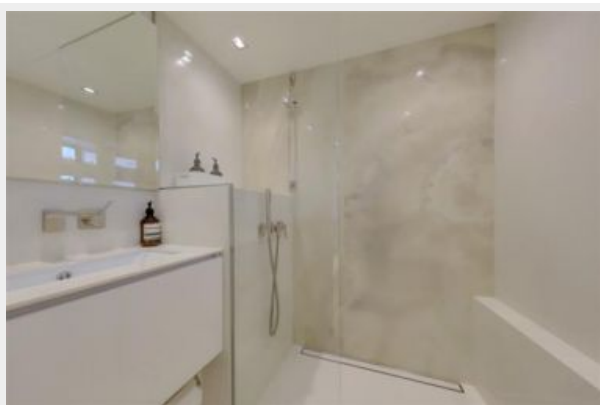
ФОТОГРАФИИ



















КОНТАКТЫ

Андрей Шестаков (Andrey Shestakov) – ведущий яхтенный брокер отдела продаж яхт и судов компании Shestakov Yacht Sales Inc. Официальный представитель Shestakov Yacht Sales Inc. для русскоговорящих клиентов в центральном офисе компании в Майами/Форт Лодердейл/Флорида/США.

Контактная информация

Email: andrey@shestakovyachtsales.com

Web: shestakovyachtsales.com

Телефоны

Краснодарский край: **+7(918)465-66-44**

США, Майами, Флорида: **+1(954)274-4435**

Время работы

Понедельник – Суббота: **9:00 - 21:00**
EDT

Воскресенье: **Закрито**

Адрес



Harbour Towne Marina, 850 NE 3rd St,
STE 213, Dania, FL 33004