

MON SHERI — BROWARD



Судостроитель: BROWARD

Год постройки: 1990

Модель: Моторная яхта

Цена: **ЦЕНА ЯХТЫ ПО ЗАПРОСУ**

Местонахождение: United States

Длина общая: 105' 0" (32.00m)

Ширина: 20' 0" (6.10m)

Мин. осадка: 5' 6" (1.68m)

Макс. осадка: 5' 8" (1.73m)

Крейс. скорость: 13 Kts. (15 MPH)

Макс. скорость: 15 Kts. (17 MPH)

Купить **MON SHERI — BROWARD** а также выбрать подходящую вам яхту из нашего каталога яхт вам поможет опытный яхтенный брокер Андрей Шестаков. На сегодняшний день компания **Shestakov Yacht Sales Inc.** имеет большое количество яхт в собственном списке продаж, а также тесно сотрудничает со всеми крупными яхтенными производителями по всему миру.

Для того чтобы купить яхту **MON SHERI — BROWARD** а также проконсультироваться по любому вопросу связанному с покупкой, продажей, чартером яхт позвоните по телефону **+7(918)465-66-44**.

ОГЛАВЛЕНИЕ

ОГЛАВЛЕНИЕ	2
ХАРАКТЕРИСТИКИ	7
Основная информация	7
Размеры	7
Скорость, вместимость и масса	7
Размещение	7
Корпус и палуба	8
Информация о двигателе	8
ПОДРОБНОЕ ОПИСАНИЕ	9
Walkthrough	9
Salon	10
Dining Area	10
Day Head	11
Pilothouse	11
Galley	11
Crew Area	12
Accommodation Companionway	12
Starboard Master Stateroom	12
Starboard Master Head	13
Port Master Stateroom	13
Port Master Stateroom Head	13
Portside Queen Berth Cabin	13
Portside Queen Cabin Head	14
Starboard Twin Stateroom	14
Twin Head	14
Foredeck	14
Flybridge	15
Flybridge Helm Equipment	15

Boat Deck Equipment	15
Tender	16
Aft Deck	16
Swim Platform	16
Lazarette	16
Engine Room	16
Electrical	17
Update Notes	17
May/June Yard Visit	18
Remarks	18
Exclusions	19
Disclaimer	19
Исключения	19
Отказ от ответственности	19
ФОТОГРАФИИ	20
Salon Looking Forward	20
Salon Couch to Port	20
Salon to Port	20
Salon to Starboard	20
Salon to Starboard	20
Salon Looking Forward	20
Salon Looking Aft	21
Dining Area	21
Dining Area Looking Aft	21
Dining Area Looking Aft	21
Dining Area Looking Starboard	21
Forward of Dining Area	21
Starboard Companionway	22
Day Head	22

Pilothouse Entrance	22
Pilothouse	22
Pilothouse Helm Seat	22
Galley	22
Galley	23
Galley	23
Crew Cabin	23
Galley	23
Lower Companionway	23
Crew Head	23
Owner Washer/Dryer	24
Crew Laundry	24
Starboard Master	24
Starboard Master	24
Starboard Master	24
Master Head	24
Starboard Master Tub	25
Port Master	25
Port Master	25
Port Master	25
Port Master Head	25
Port Master	25
Port Master Shower	26
Port Queen VIP	26
Port Queen VIP	26
Port Queen VIP	26
Port Queen VIP Head	27
Port Queen VIP	27
Port Queen VIP Shower	27

Starboard Twin Cabin	27
Starboard Twin Pullman	27
Starboard Twin Cabin	27
Starboard Twin Cabin Shower	28
Starboard Twin Cabin Head	28
Bow Area	28
Bow Sun Lounge	28
Side Deck Entrance	28
Aft Deck Seating	28
Aft Deck Seating	29
Aft Deck Seating	29
Aft Deck Seating	29
Aft Deck Seating	29
Aft Deck Dining	29
Aft Deck Sunshade	29
Aft Deck Boat Deck Stairs	30
Aft Deck Bar	30
Lazarette Storage	30
Lazarette Chest Freezer	30
Lazarette	30
Lazarette Commercial Icemaker	30
Flybridge Sun Lounge	31
Flybridge Looking Forward	31
Flybridge Looking Aft	31
Flybridge Looking Aft	31
Flybridge Helm	31
Flybridge Helm	31
Flybridge Helm Seat	32
Boat Deck Hot Tub	32

Toys Stowed	32
Boat Deck Looking Forward	32
Boat Deck	32
New Sea Doo 1	32
New Sea Doo 2	33
Walker Bay Tender	33
Walker Bay Tender	33
Engine Room Looking Aft	33
Starboard Engine	33
December 2018 Yard Visit	33
December 2018 Yard Visit	34
Stabilizer Fin	34
Extension Photo	34
Underwater Lights	34
December 2018 Yard Visit	34
December 2018 Yard Visit	34
New Underwater Lights	35
Alternate Profile	35
Alternate Profile	35
Evening	35
Alternate Profile	35
Transom	35
Mon Sheri	36
КОНТАКТЫ	37
Контактная информация	37
Телефоны	37
Время работы	37
Адрес	37

ХАРАКТЕРИСТИКИ

Основная информация

Тип судна: Моторная яхта

Подкатегория: Raised Pilothouse

Модельный год: 1990

Год постройки: 1990

Страна: United States

Верх: Raised Pilothouse

Открытая палуба мостика: Да

Размеры

Длина общая: 105' 0" (32.00m)

Ширина: 20' 0" (6.10m)

Мин. осадка: 5' 6" (1.68m)

Макс. осадка: 5' 8" (1.73m)

Скорость, вместимость и масса

Крейс. скорость: 13 Kts. (15 MPH)

Макс. скорость: 15 Kts. (17 MPH)

Чистый вес: 76 Pounds

Вместимость воды: 1600 Gallons

Вместимость сточного бака: 1000 Gallons

Объем топливного бака: 10500 Gallons

Размещение

Всего кают: 4

Всего коек: 6

Спальные места: 9

Всего ком. состава: 5

Койки экипажа: 3

Корпус и палуба

Материал корпуса: Aluminum

Материал палубы: Teak

Комплектация корпуса: Semi Vee

Отделка корпуса: Aluminum

Дизайнер корпуса: Broward

Дизайнер экстерьера: Broward

Дизайнер интерьера: Broward

Информация о двигателе

Двигатели: 2

Производитель: Detroit Diesel

Модель: 12V92

Тип двигателя: Inboard

Тип топлива: Diesel

ПОДРОБНОЕ ОПИСАНИЕ

Walkthrough

Boarding MON SHERI is easy from a floating dock via the extended Med style transom and easy stairs to the Aft Deck.

Alternately there are four boarding gates from a fixed dock via a Tide Ride ladder.

MON SHERI offers the largest most comfortable Aft Deck that you will find on a boat less than 1.5 million dollars.

The Aft Deck is arranged with a dining table and eight loose chairs well forward. Aft, but still under the extended hardtop is a seating group with a three section sofa, two large easy chairs and a coffee table.

Other Aft Deck amenities include a wet bar, flat panel TV and circular steps to the Flybridge.

The Salon is entered via a center opening door; being full beam this area is immense and stretches forward into a formal Dining Area. To port is a large C shaped upholstered settee to seat six to eight people. To starboard are two swivel occasional chairs slightly in front of a popup TV. Next forward are the steps to the four en suite Guest Cabins.

Large side and aft windows add an incredible amount of daylight.

Forward is the Dining Area for eight with service cabinets port, forward and starboard.

A side deck access door is to port followed by steps to the Pilothouse. To starboard is access to the Main Deck Companionway with a side deck door, Day Head and secondary Pilothouse access and a Companionway to the Galley and all the way forward Crew and Engine Room access.

The Galley is Country Kitchen style with appliances aft, a large curved bar mid Galley and an "eat in" table forward with fixed seating for four and loose chairs for three.

To starboard are steps to the Crew Area with a raised double berth forward with private head, a double cabin to port with a pullman and an open berth to starboard with the Laundry Area. The standup Engine Room is next aft.

From the Salon steps lead to the four en suite staterooms in the Owner's party.

Aft to port is athwartship walkaround queen berth en suite cabin.

Aft to starboard is a twin berth en suite cabin.

Unique to this Broward, the midship area is split with two king size bed staterooms each with en suite head. The Starboard Cabin has a tub/shower and the port a large shower.

This unusual arrangement makes the best use of the yacht's accommodation area.

The huge Flybridge also benefitted by the yacht's extension. Large port and starboard seating areas flank the centerline helm followed by a walk behind bar, sunbed and centerline Jacuzzi.

Room for a large tender and two Jet Skis is aft. Steps lead to the Aft Deck.

Salon

Entered via a centerline sliding door there are two large sidelights, all floor to ceiling. Immediately to port is an upholstered sofa to seat up to eight people. It is C shaped. A three level elongated oval coffee table lies in front. Built in cabinets in the fore and aft corners offer a place for a table lamp and or artwork.

To starboard upon entering are two upholstered swivel chairs with a small end table between.

Further outboard is a six door ash cabinet that houses a popup Samsung 50" LED TV. Within drawers and cabinets is a Samsung Blue Ray player, Bose receiver and a DC powered, JVC AM/FM/CD player.

In the overhead are five channel speakers and seven down lights. Very large side windows are covered with retractable shades (aft sides included) and demi drapes.

Next forward is the stairs to the accommodations below enclosed in an attractive glass and wood enclosure.

The carpet in the Salon is covered with a Sunbrella carpet runner over the traffic area.

Dining Area

Next forward and open to the Salon is the Dining Area.

A walnut table with six upholstered chairs is centerline. Overhead are three dedicated down lights.

To port are six cabinet doors most with a slim drawer and storage inside. To starboard are three cabinet doors with shelves and drawers for glass storage within.

Forward are three more large cabinets. The center holds the KVH tuner and a rack for the five Sat receivers. Either side are five drawers for dining ware behind matching cabinet doors.

Above is a glass countertop and decorative mirror.

Outboard to port is a sliding door to the side deck and three steps to the Pilothouse.

Outboard to starboard is a sliding door to the starboard side deck and inboard the Day Head.

Day Head

The Day Head has been updated to have glass tile walls, an onyx countertop and an above counter glass vessel sink with vanity storage below. Above the vanity is a three sided mirror.

The toilet is an upgraded Head Hunter model. The sole is marble tile.

Outside the Day Head the marble tiles continue forward to the Galley and steps to the Pilothouse.

Pilothouse

Teak & holly sole 2 Person helm seat w/fold down footrest, (3) drawers below (2) Large chart drawers under footrest 15" VEI screen computer based nav system Robertson AP 9 Mark II autopilot Simrad AR77 gyro compass Garmin autopilot VEI 15" Nav Screen nav screen VEI 12" Nav Screen for Furuno radar Panish engine controls VDO full engine gauges Robertson RI45 Rudder angle indicator Furuno GP36 GPS Navigator B&G 20 20 digital depth B&G 20 20 digital speed Garmin 4" data readout Kahlenberg horn & whistle control Flowscan fuel monitor w/digital tachometers Icom M602 VHF w/remote mic Sea 222 side band w/remote mic Icom M602 VHF w/remote mic Koopnautic stabilizer controls HP computer tower for plotting software Tank tender pneumatic fuel level system Head Hunter LED tank sentry fuel level Capac corrosion monitor ACR searchlight control w/joystick 6" Danforth Constellation magnetic compass Synchronizer controls Broward high water alarm panel, engine alarm panel Icom Command mic for Flybridge VHF Opening side windows (6) Steps to Flybridge w/2 piece hatch

Galley

Galley is forward and two steps down from Starboard Side Companionway. The sole is wood planks, the countertops are black Galaxy granite.

Features include: Jenn Air stainless steel three door fridge/freezer Dacor stainless steel oven & 4 burner glass cook top Jenn Air stainless steel microwave GE Monogram stainless dishwasher GE Profile stainless compactor GE Monogram stainless steel two drawer refrigerator Miele steam oven DG4080 (new 2019) 29" LED Samsung TV on swivel mount (5) Stainless steel cabinet doors (6) stainless steel drawers J shaped island w/(6) wood drawers, (6) cabinet doors facing forward Large size windows w/rope lighting behind valance (9) Overhead dimmable lights

Country Kitchen is forward with loose and fixed seating to fit seven with a varnished wood high gloss table. There is additional storage under the seating. Forward are five three shelf cabinets. The settee terminates into a built in end table with cabinet and drawer below.

Crew Area

Down six starboard side steps from the Galley is the Crew Area.

At the foot of the stairs one can go forward to the recently modified Captain's Cabin with a raised double berth to port with two storage cabinets below. Aft is a large hanging locker. Overhead is a deck hatch. Forward is an access hatch to the anchor locker. Port and starboard are opening portholes with drapes.

Aft, outside of the cabin, is the Crew Head with a marble topped vanity, above counter vessel sink, medicine cabinet, Microphor head and a stall shower with a bi fold glass door.

This head serves the entire Crew Area.

Down three steps is a double berth to port with a fold down pullman above. The cabin has a cedar lined hanging locker, a Pioneer stereo and a sliding Soji screen door.

Across the open Companionway is an oversize single bunk with a half height hanging locker, six storage cabinets and a separate Whirlpool washer and dryer. This cabin also has a sliding Soji screen door.

Accommodation Companionway

Down nine carpeted steps is the yacht's Companionway leading to her four en suite staterooms below. Behind three ash doors are full size Frigidaire washer and dryer units and two large stewardess lockers. Also in this area are four overhead lights and a marble sole with contrasting stone accents.

Immediately forward are MON SHERI's matching Master Staterooms to port and starboard. Both feature a king size bed.

Aft in the Companionway is the Queen Cabin to port and the Twin Berth Cabin to starboard.

Starboard Master Stateroom

Entered from the aft end the king size berth is arranged athwartship off the outboard bulkhead. There are four locking drawers and two cabinets under the berth. Both fore and aft of the berth are large three drawer nightstands. Outboard of the berth are two opening portholes behind sliding Soji screens. Aft is a bi fold door into a cedar lined hanging locker. Forward is the entrance in the private head.

Also in this cabin are four overhead lights, two stereo speakers, new wall papered bulkheads, a dressing mirror, new headliner and a newly carpeted sole.

Starboard Master Head

The private head has a marble tile sole and a vanity with two cabinet doors and three drawers below. The onyx countertop has an undermount china sink and a two tone fixture above. There are three sides of mirrors around the countertop.

The toilet is a Microphor model. Inboard is a Jacuzzi tub with a shower fixture. There are marble framed mirrors fore and aft of the tub. Also in the head are six accent lights around the mirror, three overhead mini spots, a GFCI outlet and a ventilation fan.

Port Master Stateroom

Entered from the aft end the king size berth is arranged athwartship off the outboard bulkhead. Both fore and aft of the berth are large three drawer nightstands. Outboard of the berth are two opening portholes behind sliding Soji screens. Aft is a hinged door into a walk in cedar lined hanging locker plus an adjacent 42" Samsung TV with two cabinet doors below for A/V equipment including a Denon AV/AM/FM/CD receiver, an Isotherm drink fridge and a digital safe. Forward is the entrance in the private head.

Also in this cabin are four overhead lights, two stereo speakers, new wall papered bulkheads, a dressing mirror, new headliner and a newly carpeted sole.

Port Master Stateroom Head

The private head has a marble tile sole. The vanity has an onyx counter with an undermount china sink and two tone wide spread faucets. The vanity has one drawer and two cabinet doors below. Three sides of mirrors surround the vanity.

The large stall shower has a sliding frameless glass door and sidelight as well as marble tiled walls and a wall mounted shower fixture and two lights. The toilet is a Head Hunter model.

Also in the head are two overhead mini spots, six mirror accent lights, a GFCI outlet and an exhaust fan.

Portside Queen Berth Cabin

The Queen Berth Cabin is entered from the forward end with the berth located athwartship off the outboard bulkhead. There are four drawers located under the berth. Both fore and aft are large chests with three drawers aft and six forward. These chests serve as nightstands and have table lamp atop.

Outboard are two opening portholes behind sliding Soji screens. Aft is a bi fold door into the

cedar lined hanging locker and a small corner shelf/vanity under a small LED TV. Forward is the entrance to the Forward Head. Also in this cabin are two stereo speakers, five overhead mini spots and a carpeted sole.

Portside Queen Cabin Head

The private head is forward and has a planked wood sole and a vanity with a single drawer and cabinet door. Above is a cultured marble countertop and sink with a two tone fixture.

The toilet is a Head Hunter model. The fiberglass stall shower has a bi fold frosted glass door and a handheld or wall mounted fixture.

Also in the head is a large three shelf medicine cabinet, two overhead lights, an eight bulb vanity fixture and a ventilation fan as well as an opening porthole with drapes.

Starboard Twin Stateroom

Entered from the forward end looking aft are two twin beds with upholstered headboards and a closet with a sliding door between. Above the inboard berth is a fold down pullman berth followed by a vanity with stool adjacent to the entry door. Above the outboard berth are two opening portholes behind sliding Soji screens. At the foot of the outboard berth is a chest of six full size drawers. Furthest forward is the entrance to the private head.

Twin Head

The sole is planked wood. The vanity has one cabinet door and one drawer below a cultured marble top with molded sink and two tone fixtures.

The head is a Microphor model. The fiberglass stall shower has an obscure glass bi fold door and a handheld or wall mounted fixture.

Also in the head is a large three shelf medicine cabinet, an eight bulb vanity light, a GFCI outlet and an opening porthole with curtain.

Foredeck

Nonskid aluminum decks King size sun pad w/new cushions & cover Storage under sun pad Broward style bow staff Ideal windlass w/250' of 3/8" chain up/down foot switches Forfjord style anchor on bow roller Bow roller Stainless steel bow rail Steps to Coach Roof above Galley Chrome bell Painted covering boards Deck hatch to Captain's Cabin Stainless steel fairleads Triple spring line cleats Inboard gunwale Engine Room vents (3) Windshield wipers New Textulene windshield cover Glendinning 100 amp shore cord reel Midship boarding gates Side

deck cameras at sliding entrance doors

Flybridge

The Flybridge on MON SHERI is massive. It stretches almost 40' from end to end.

Centerline forward is the complete Upper Helm. A large Bimini top extends forward of the helm and aft to the open radar arch.

The helm has a three person raised bench seat with new Sunbrella cushions, a cover, a fold down footrest and is entirely open to storage with port and starboard access doors.

Incorporated into the helm seat is a walk behind bar with a Fire Magic stainless steel BBQ grill, a single Isotherm drawer fridge, a Whirlpool trash compactor, Granite countertops, an undermount stainless steel sink and a storage cabinet.

To both port and starboard are 8' bench seats facing inward with new Sunbrella cushions and covers with storage below. Both benches terminate in cabinets with storage below that also function as end tables for the seating.

There is another 8' bench seat to port with a 6' version to starboard. In the center is a king size sunbed with new Sunbrella cushions, cover and massive storage below.

A hinged gate to port separates this area from the Boat Deck.

Other equipment on the Flybridge: (5) Low level deck lights (4) Stereo speakers Hinged aluminum radar arch w/sun cutouts Aft facing CCTV camera (5) Downlights on arch (2) Quartz lights facing Boat Deck Non-skid painted aluminum sole Bimini top zip in extension KVH Trac Vision 7 Sat TV dome Meal/absent lights (2) 6' Furuno radar scanners ACR remote searchlight Various GPS sensors (4) VHF antennas

Flybridge Helm Equipment

Garmin 7616 touchscreen plotter, depth, CCTV Furuno Nav Net 10" GPS/radar Robertson AP9MK II autopilot Garmin autopilot Garmin 4" data readout Garmin 4" data readout Icom M506 VHF w/DSC Furuno GPS/WAAS Navigator GP 32 Panish engine controls JVC Marine stereo Start/stop buttons for engines Bow thruster controls VDO full engine gauges including tachometers Robertson RI 45 rudder angle indicator ACR joystick searchlight control Engine synchronizer controls Helm cover Plexi Venturi windscreen Stainless steel helm wheel

Boat Deck Equipment

FRP hot tub w/hard cover in aluminum frame Nonskid painted aluminum decking Life ring

w/retrieval line Circular stairs & safety rail to Aft Deck Sunshade aft of arch (2) 2018 GTISE Sea Doos w/covers Custom mounting chocks for Sea Doos Custom mounting chocks for RIB tender (2) New Revere 8 person life rafts Marquipt 2000lb. hydraulic tender davit Stern flagstaff permanently mounted Safety rail when tender removed

Tender

2015 Walker Bay Generation 450 15' RIB with 70 HP Yamaha 4 stroke outboard Teak step pad at bow Navigation lights Full cover L shaped seating in bow Popup cleats Center console Standard Horizon VHF Yamaha tach & speed Lifting bundle 12 Volt accessory outlet 12 Volt battery Teak step pad aft Battery shutoff switch

Aft Deck

Hand laid teak over aluminum decking Teak dining table w/(8) teak chairs Wet bar w/sink & GE refrigerator/freezer Circular stairs to Boat Deck w/(6) teak treads (4) Overhead speakers (2) Custom storage lockers Centerline sliding door to Salon Port & starboard boarding gates & 10 overhead stainless steel trimmed light rail breaks Stainless steel safety rails sides & aft Port & starboard stainless steel Boat Deck supports (2) Teak easy chairs Teak coffee table Teak 3 cushion sofa Textulene sunshade aft Aft cleats & stainless steel fairleads (2) Cameras, (1) forward, (1) aft (2) Quartz lights facing aft (10) Overhead stainless steel trimmed lights 7 Step Marquipt Tide Ride ladder

Swim Platform

Six curved steps from the port or starboard Aft Deck lead to an integral nonskid Swim Platform.

Features include: (3) Tender cleats Freshwater wash down Salt water wash down Water tight Lazarette door, centerline (3) Port, (3) starboard step lights (2) Hoop rails

Lazarette

(2) Dead lights on hull sides (4) Overhead fluorescent lights(2) Spare props, mounted on bulkheadDry deck decking on soleOverhead rod storage (8)18 Compartment bin storage systemTwo piece tool chest Dedicated air conditioning for Lazarette areaSeveral GFI outletsHead Hunter tank sentry for aft water tank(4) New underwater lights(9) 110 Volt breakers for Lazarette equipment

Engine Room

Port engine new remanufactured from Detroit Diesel Feb, 2019, 12V92 TA 1080 HPZF BW

190/BW 195 transmissions w/2.571 to 1 ratio 50 Lb. 1301 Halon system by Delta Crash pumps on each main engine Glendinning engine synchronizer Panish engine controls 3" Diameter prop shafts HPS 4 blade hydraulic bow thruster in 12" tube Koopnautic hydraulic stabilizer w/42" x 35" fins 50 Gallon used oil tank below port engine Marine Air 12 ton chilled water AC system chiller #3 new Nov 2018 Watermakers Inc. 2000 GPD watermaker Triple Racor filters fore each generator 200 PSI air compressor (rebuilt 1/19) 12V Submersible electric/auto bilge pump w/high water alarm Electric fuel transfer pump to manifold w/digital gauge and auto timer Auto oil change pump for both engines Power steering system Delta T air intake system (2) Head Hunter Mach 5 water pumps Elben Engine Room CCTV camera Racor fuel filters for each generator New exhaust blankets (2) Opening portholes Airsep crankcase ventilation system Head Hunter LED fuel gauge Fuel transfer pump w/fill rite counter Engine start/stop switches Generator manual gauges plus volt/hertz/amp meter (2) Racor 900 fuel filters for generator Hynautic power steering reservoir Vacuum gauges for Racor (3) Racor filters for fuel transfer system Manual Engine Room gauges Workbench w/vise

Electrical

12/24 Volt DC electrical system 120/240 Volt AC electrical system Phasar/Kabuta 40 KW genset 4570 hours since new 2009 in sound shield Cummins/Stamford 40 Kw generator in sound shield 12 Volt 40 amp Charles charger 24 Volt 30 amp Mastervolt charger Magnatek DC converter (2) Statco voltage regulators # AVR24130 (2) Acme 15 KVA isolation transformers (3) x 12 Volt 8D batteries forward of port engine (3) x 12 Volt 8D batteries forward of starboard engine (5) Battery shutoff switches 24 Volt incandescent Engine Room lights 110 Volt fluorescent Engine Room lights (2) 100 Amp shore power inlets (1) 100 amp Glendinning cable reel inlet Capac corrosion monitor Main Engine Room panel with: (14) DC breaker protected circuits (40) AC breaker protected circuits (2) Rotary selector switches for port shore/gen starboard shore/gen DC voltmeter DC amp meter (2) AC voltmeters (2) AC amp meters Frequency meter

Update Notes

2018/2019 Updates:

- Newly remanufactured long block for starboard engine from Detroit Diesel, rebuilt by RPM Diesel 12/18
- Chiller number 3 replaced
- Two new raw water a/c pumps
- Four new 8D starting batteries
- New exhaust jackets
- November 2018 bottom job, props overhauled, prop speed
- November 2018 stabilizer full service
- New line cutters on shafts
- Four new underwater lights
- Exterior compound and wax, waterline up
- New EPIRB
- Two new Revere 8-man life rafts with hydrostatic release
- All new exterior Sunbrella cushions and covers
- New tender cover
- 16' x 16' aft sunshade over boat deck
- New storage system in Lazzaretto
- 3 microphor toilets overhauled
- Rebuild of primary air compressor
- Two new Sea Doos

Of special note is the fact that the king bed master has been converted to two king bed masters,

each with their own private head and entrance. All soft goods in these cabins (and others) are new including window shade, wall coverings, bedspreads, air handler, TV, etc.

Vessel is fully found with new linens, towels, bath accessories, Galley cookware, silverware, dinnerware, small appliances, etc.

2015/2016 Updates:

- Glendenning 100-amp shore cord reel in bow with 120' cable
- Garmin 7616 plotter
- Garmin autopilot
- Garmin AIS
- Garmin depth sounder
- Garmin speed indicator
- KVH HD 7 24" SAT Dome
- Aft deck soft goods
- Jacuzzi rebuilt
- New dining room table and chairs
- (3) New headhunter toilets
- New standpipes on engine intakes
- Rebuilt Kubota Engine on Phasor Genset
- New power steering pump
- All new valves on standpipes in Engine Room
- New BOSE sound system and Samsung 4K Ultra HD TV in Salon
- \$10,000 upgrade of Day Head
- New 15' Walker Bay Tender and outboard

May/June Yard Visit

Complete bottom sanding \$7800.00
Micron CSC black bottom paint \$6900.00
All zincs \$3400.00
Prop speed on props
Replace portside shaft log bearings (2) \$6200.00
Replace Tides shaft seals port & starboard \$11,000
Replace plumbing for shaft seal lubrication
Rebuild shaft spurs(4)
New underwater lights & wiring

Total over \$49,000.00

Remarks

"MON SHERI" was purchased in late 2018 by an owner who just sold his business and was set to start the cruise of a lifetime..., now back ashore, he needs to again, take control of his business and regrettably put "MON SHERI" up for sale.

Please review the serious list of updates from this owner and the previous owner.

This highly customized Michigan built Broward (originally 94' LOA) offers a Flybridge, Aft Deck and Lazarette only found on extended vessels. The Aft Deck must be seen to be appreciated.

With her customized four cabin arrangement she offers the perfect charter arrangement with four nearly equal staterooms.

Owner MIGHT consider partial ownership offers.

At her new \$795K asking price MON SHERI is unquestionably the best deal in this size yacht, Broward or otherwise!

Exclusions

While every effort was made to list all pertinent included equipment aboard MON SHERI, there are some personal belongings aboard. Prospective purchasers should assume any item not specifically mentioned herein will not convey at closing.

Disclaimer

Specifications are provided for informational purposes only. Data was obtained from sources believed reliable but is not guaranteed by owner or brokers. Buyer assumes responsibility to verify all speeds, capacities, consumption's and other measurements contained herein and otherwise provided and agrees to instruct his agents to confirm such details prior to purchase. Vessel is subject to prior sale, price and inventory changes and withdrawal from market without notice.

Исключения

При продаже яхты исключаются личные вещи владельца.

Отказ от ответственности

Компания предоставляет описание судна или яхты добросовестно, но не может гарантировать точность этой информации, а также не ручается за техническое состояние. Покупатель должен проинструктировать своих агентов или оценщиков исследовать представленную информацию более подробно, по собственному желанию. Продажа судна или яхты, изменение цены или снятие с продажи будет происходить без предварительного уведомления.

ФОТОГРАФИИ

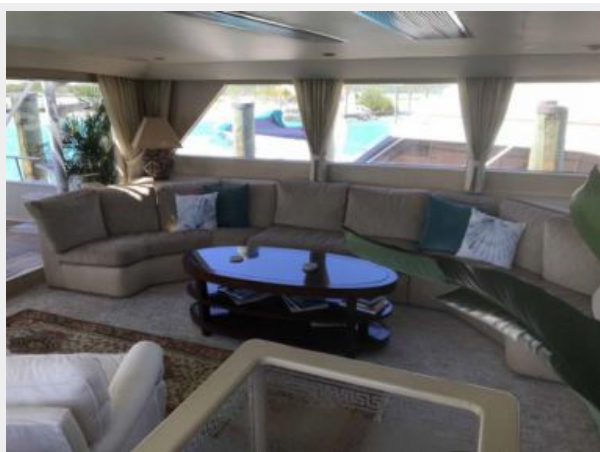
Salon Looking Forward



Salon Couch to Port



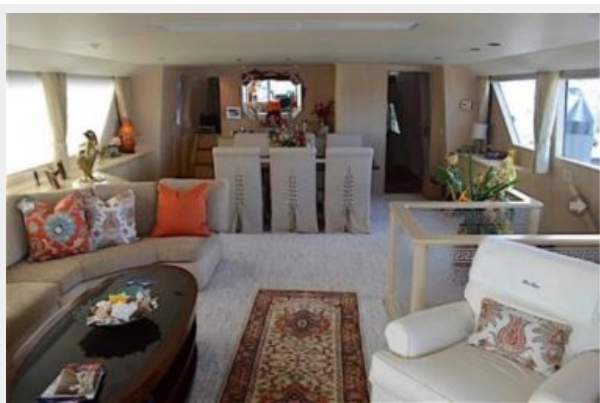
Salon to Port



Salon to Starboard



Salon Looking Forward



Salon to Starboard



Salon Looking Aft



Dining Area



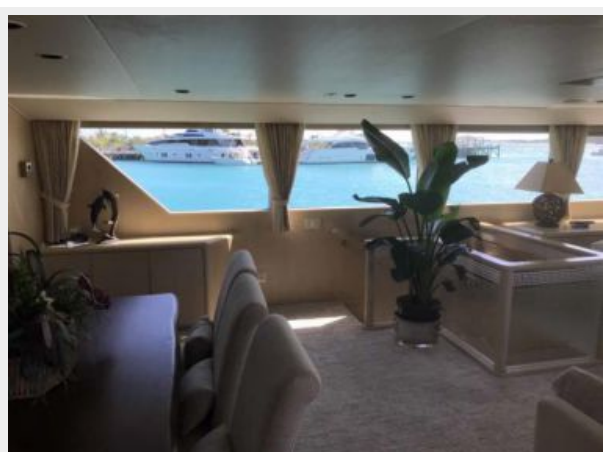
Dining Area Looking Aft



Dining Area Looking Aft



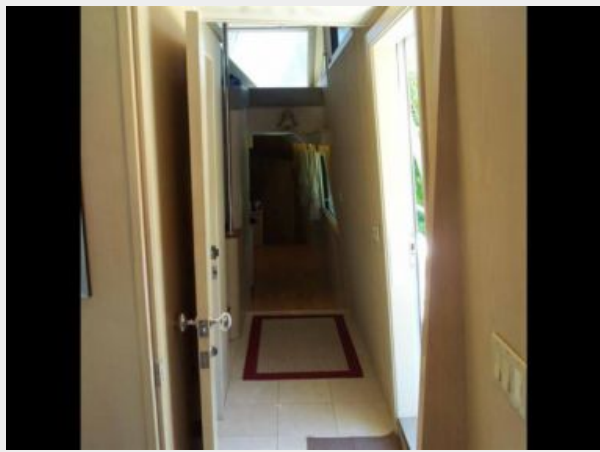
Dining Area Looking Starboard



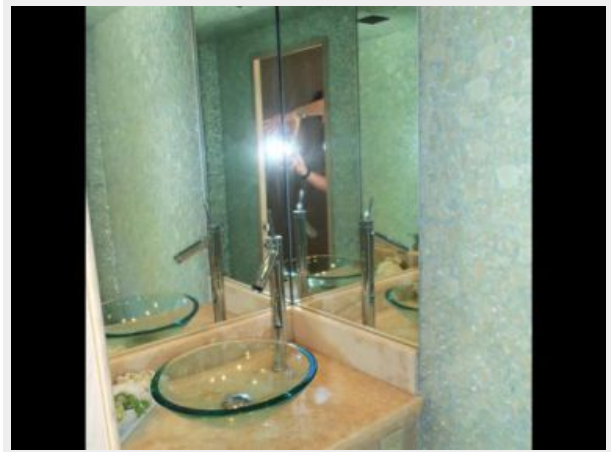
Forward of Dining Area



Starboard Companionway



Day Head



Pilothouse Entrance



Pilothouse



Pilothouse Helm Seat



Galley



Galley



Galley



Galley



Crew Cabin



Crew Head



Lower Companionway



Crew Laundry



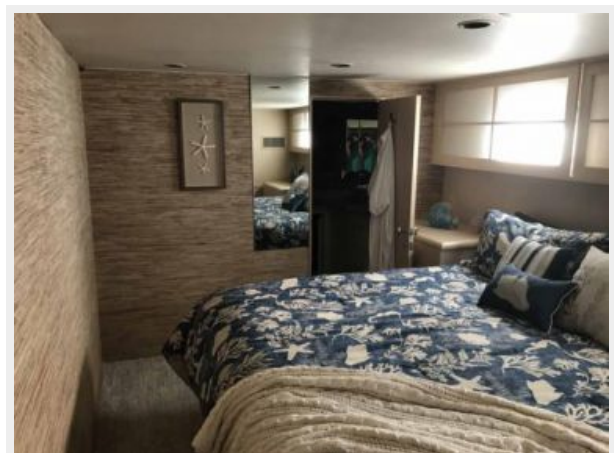
Owner Washer/Dryer



Starboard Master



Starboard Master



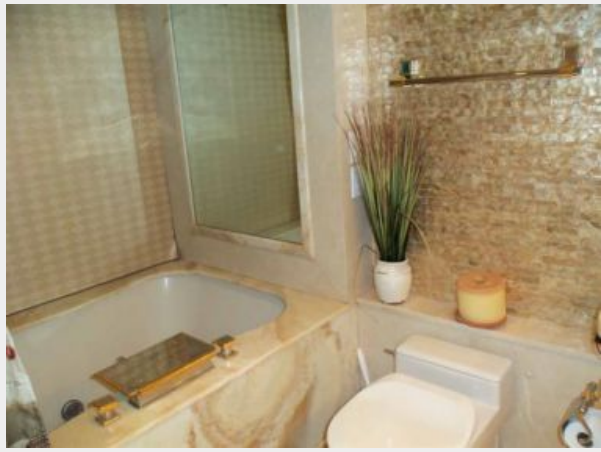
Starboard Master



Master Head



Starboard Master Tub



Port Master



Port Master



Port Master



Port Master



Port Master Head



Port Master Shower



Port Queen VIP



Port Queen VIP



Port Queen VIP



Port Queen VIP



Port Queen VIP Head



Port Queen VIP Shower



Starboard Twin Cabin



Starboard Twin Pullman



Starboard Twin Cabin



Starboard Twin Cabin Head



Starboard Twin Cabin Shower



Bow Area



Bow Sun Lounge



Side Deck Entrance



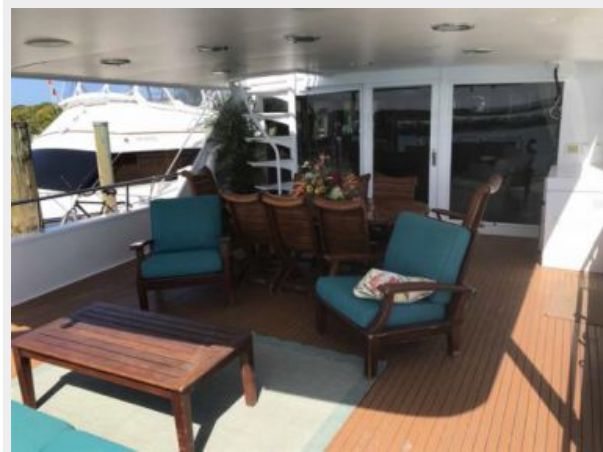
Aft Deck Seating



Aft Deck Seating



Aft Deck Seating



Aft Deck Seating



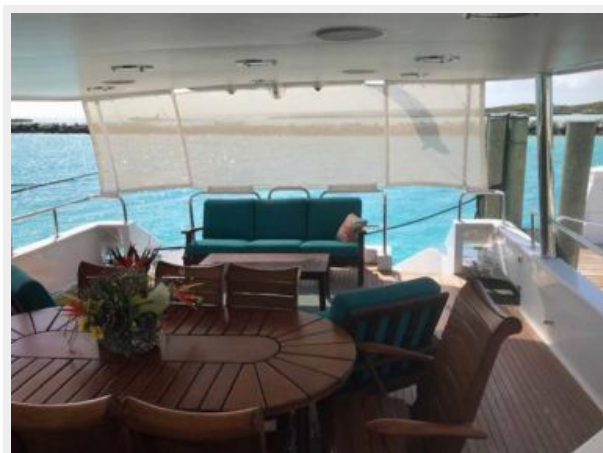
Aft Deck Seating



Aft Deck Dining



Aft Deck Sunshade



Aft Deck Bar



Aft Deck Boat Deck Stairs



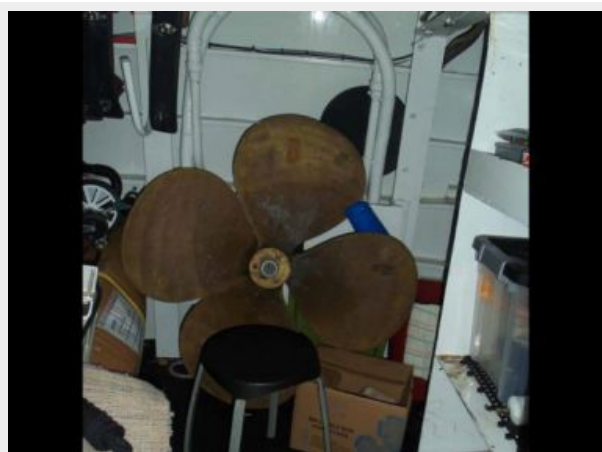
Lazarette Storage



Lazarette Chest Freezer



Lazarette



Lazarette Commercial Icemaker



Flybridge Sun Lounge



Flybridge Looking Forward



Flybridge Looking Aft



Flybridge Looking Aft



Flybridge Helm



Flybridge Helm



Flybridge Helm Seat



Boat Deck Hot Tub



Toys Stowed



Boat Deck Looking Forward



Boat Deck



New Sea Doo 1



New Sea Doo 2



Walker Bay Tender



Walker Bay Tender



Engine Room Looking Aft



Starboard Engine



December 2018 Yard Visit



December 2018 Yard Visit



Stabilizer Fin



Extension Photo



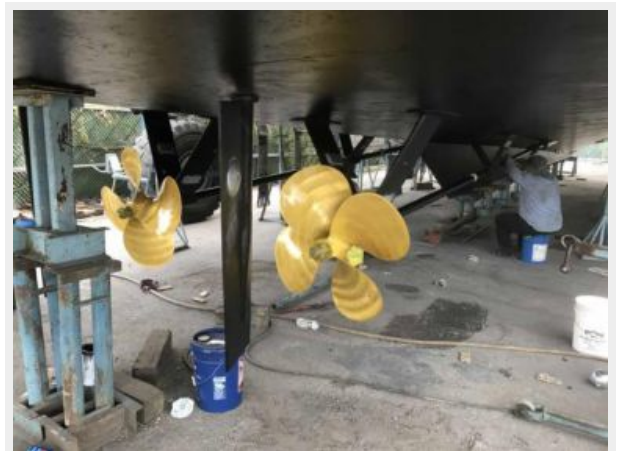
Underwater Lights



December 2018 Yard Visit



December 2018 Yard Visit



New Underwater Lights



Alternate Profile



Alternate Profile



Evening



Alternate Profile



Transom



Mon Sheri



КОНТАКТЫ

Андрей Шестаков (Andrey Shestakov) – ведущий яхтенный брокер отдела продаж яхт и судов компании Shestakov Yacht Sales Inc. Официальный представитель Shestakov Yacht Sales Inc. для русскоговорящих клиентов в центральном офисе компании в Майами/Форт Лодердейл/Флорида/США.

Контактная информация

Email: andrey@shestakovyachtsales.com

Web: shestakovyachtsales.com

Телефоны

Краснодарский край: **+7(918)465-66-44**

США, Майами, Флорида: **+1(954)274-4435**

Время работы

Понедельник – Суббота: **9:00 - 21:00**
EDT

Воскресенье: **Закрето**

Адрес



Harbour Towne Marina, 850 NE 3rd St,
STE 213, Dania, FL 33004