

## 46' MERIDIAN 2007 — MERIDIAN



**Builder:** MERIDIAN

**Year Built:** 2007

**Model:** Motor Yacht

**Price:** PRICE ON APPLICATION

**Location:** Venezuela

**LOA:** 46' (14.02mm)

**Beam:** 14.33

**Max Draft:** 3' 10" (1.17mm)

**Cruise Speed:** 17 Knots Kts. (20 MPH)

**Max Speed:** 22 Knots Kts. (25 MPH)

Our experienced yacht broker, Andrey Shestakov, will help you choose and buy a yacht that best suits your needs 46' Meridian 2007 — MERIDIAN from our catalogue. Presently, at Shestakov Yacht Sales Inc., we have a wide variety of yachts available on our sale's list. We also work in close contact with all the big yacht manufacturers from all over the world.

If you would like to buy a yacht 46' Meridian 2007 — MERIDIAN or would like help answering any questions concerning purchasing, selling or chartering a yacht, please call +1(954)274-4435

---

# TABLE OF CONTENTS

---

TABLE OF CONTENTS	2
SPECIFICATIONS	3
Overview	3
Basic Information	3
Dimensions	3
Speed, Capacities and Weight	4
Accommodations	4
Hull and Deck Information	4
Engine Information	4
PHOTOS	5
CONTACTS	15
Contact details	15
Telephones	15
Office hours	15
Address	15

---

# SPECIFICATIONS

---

## Overview

---

Motorboat Meridian 46 feet year 2007, 2 Motors QSB-380 with approx. 600 hours of use. With all maintenance up to date. Vessel cruises between 17 and 20 knots and top speed is 22 knots. Desalination plant almost new w/ only 20 hours of use. Stern and bow thrusters. 8 recently changed bilge pumps. Fire extinguishing system in the engine room. 8 Batteries installed 6 months ago. 100 amp battery charger and also works inverter for 110 Volt. Onan generator – 13 kW w/ approx. 1120 hours. 4 air conditioners/heaters - 1 in each room and 2 in the main salon. A great Number of accessories and spare parts for the maintenance of the vessel and of the engines. 1 radio antenna, radar, gps, depth sounder. Autopilot - North Star, Direct Tv antenna, Kenwood sound system in the main salon w/ iPOD/USB ports w/ 2 additional remote controls & JL speakers throughout. LED lighting. All new enclosures throughout. 1 Small fridge and freezer in the cockpit. Umbrellas and aluminum beach chais included. 2 cabins with TV/DVD built in. The 2 cabins are matrimonial and with incorporated baths. Electric kitchen w/ 4 burners, 2-door refrigerator, microwave oven, large sink, washer and dryer that runs at 12 volts. Also Includes RIB w/ 15 HP Honda motor and cover.

## Basic Information

---

**Category:** Motor Yacht

**Sub Category:** Motor Yacht

**Model Year:** 2007

**Year Built:** 2007

**Country:** Venezuela

## Dimensions

---

**LOA:** 46' (14.02mm)

**Beam:** 14.33

**Max Draft:** 3' 10" (1.17mm)

---

## Speed, Capacities and Weight

---

**Cruise Speed:** 17 Knots Kts. (20 MPH)

**Max Speed:** 22 Knots Kts. (25 MPH)

**Gross Tonnage:** 30700 Pounds

**Water Capacity:** 90 Gallons

**Holding Tank:** 55 Gal Gallons

**Fuel Capacity:** 330 Gal Gallons

---

## Accommodations

---

**Total Cabins:** 2

**Total Heads:** 2

---

## Hull and Deck Information

---

**Hull Material:** Fiberglass

---

## Engine Information

---

**Engines:** 2

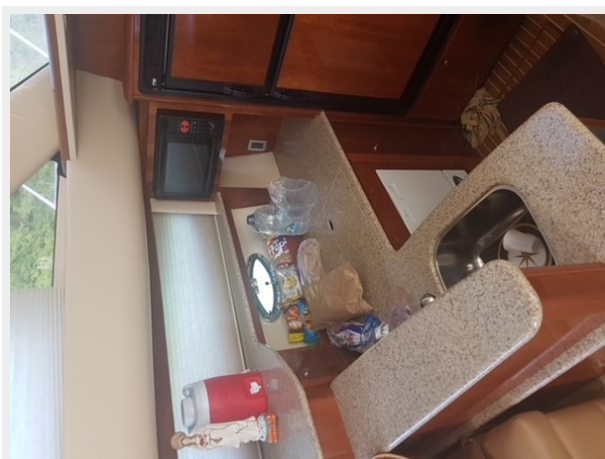
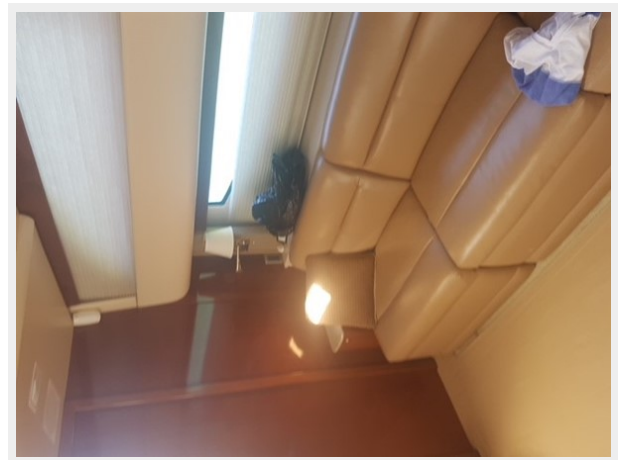
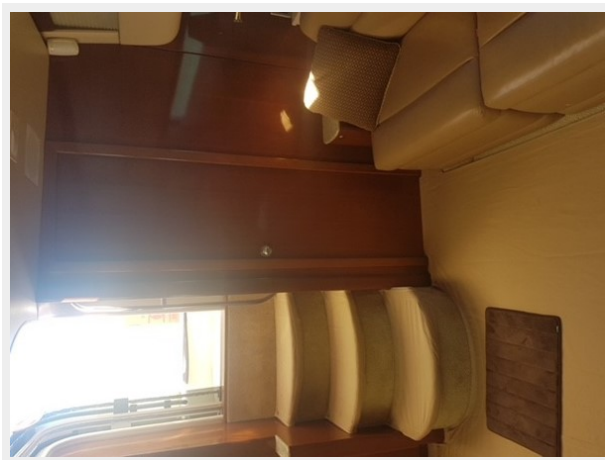
**Manufacturer:** Cummins

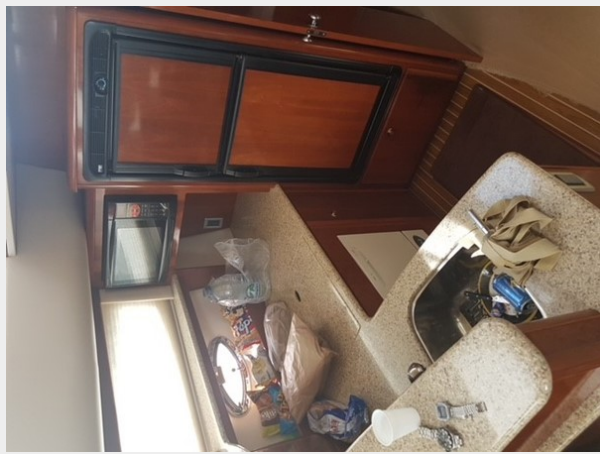
**Engine Type:** Inboard

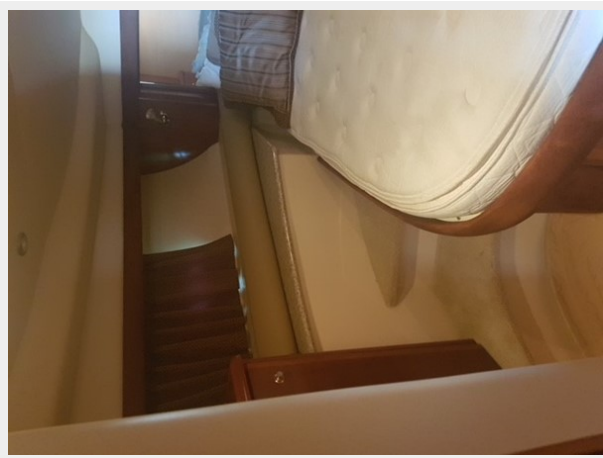
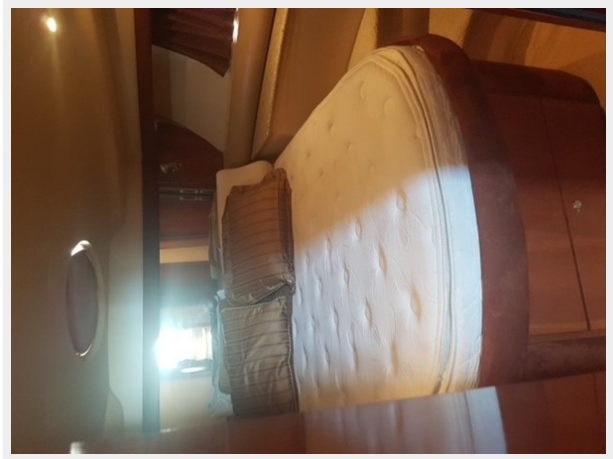
**Fuel Type:** Diesel

# PHOTOS

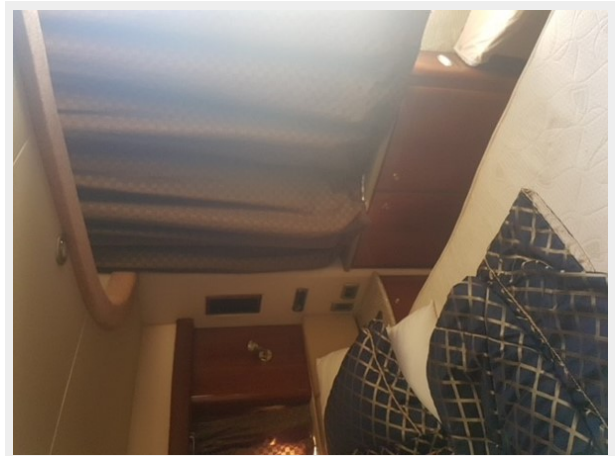


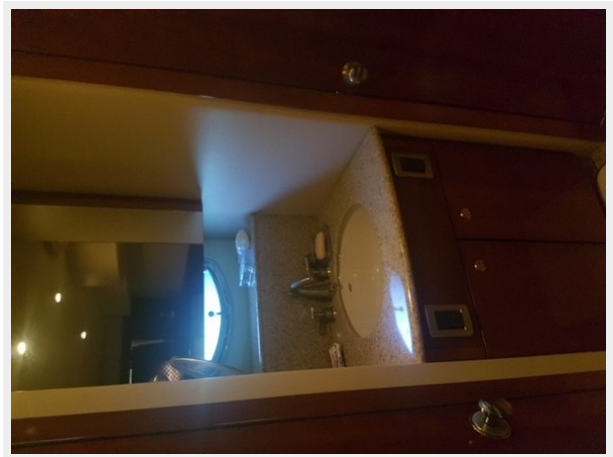
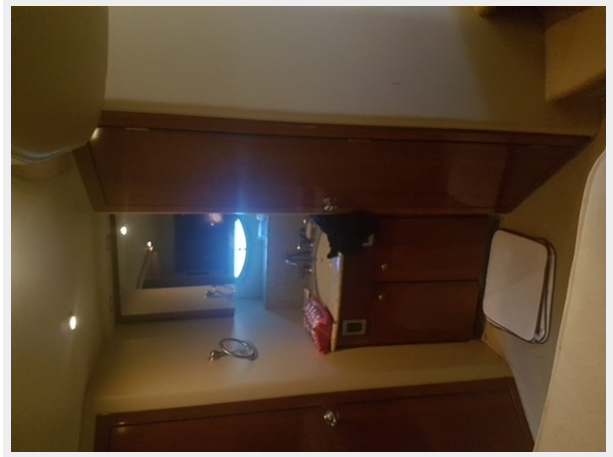
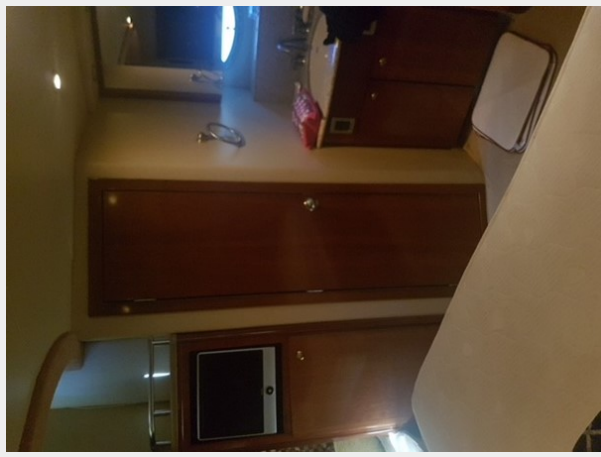




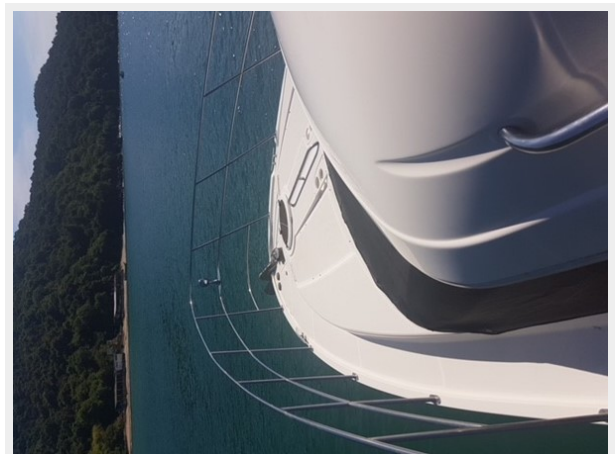


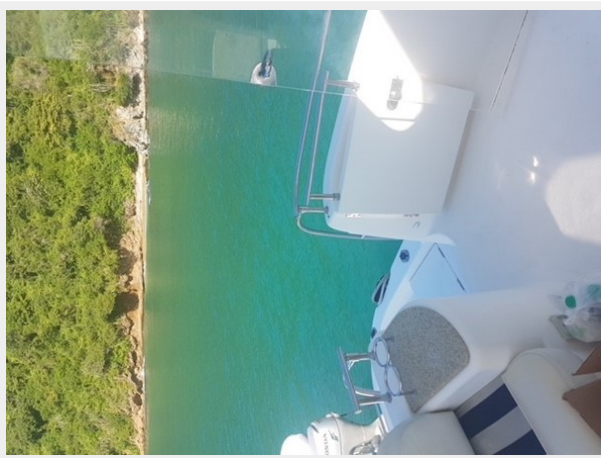














---

# CONTACTS

---

Andrey Shestakov, leading yacht broker of the sales department of Shestakov Yacht Sales Inc. Shestakov Yacht Sales Inc., the official representative of the Miami/Fort Lauderdale FL headquarters.

---

## Contact details

---

Email: [andrey@shestakovyachtsales.com](mailto:andrey@shestakovyachtsales.com)

Web: [shestakovyachtsales.com/en/](http://shestakovyachtsales.com/en/)

---

## Telephones

---

USA: +1(954)274-4435

---

## Office hours

---

Monday – Saturday: **9:00 - 21:00** EDT

Sunday: **closed**

---

## Address

---



Harbour Towne Marina, 850 NE 3rd St,  
STE 213, Dania, FL 33004