

## REWIND — BENETEAU



**Судостроитель:** BENETEAU

**Год постройки:** 2014

**Модель:** Крейсер

**Цена:** ЦЕНА ЯХТЫ ПО ЗАПРОСУ

**Местонахождение:** United States

**Длина общая:** 49' 0" (14.94m)

**Ширина:** 14' 0" (4.27m)

**Макс. осадка:** 3' 7" (1.09m)

**Крейс. скорость:** 24 Kts. (28 MPH)

**Макс. скорость:** 27 Kts. (31 MPH)

Купить **Rewind — BENETEAU** а также выбрать подходящую вам яхту из нашего каталога яхт вам поможет опытный яхтенный брокер Андрей Шестаков. На сегодняшний день компания **Shestakov Yacht Sales Inc.** имеет большое количество яхт в собственном списке продаж, а также тесно сотрудничает со всеми крупными яхтенными производителями по всему миру.

Для того чтобы купить яхту **Rewind — BENETEAU** а также проконсультироваться по любому вопросу связанному с покупкой, продажей, чартером яхт позвоните по телефону **+7(918)465-66-44**.

# ОГЛАВЛЕНИЕ

---

ОГЛАВЛЕНИЕ	2
ХАРАКТЕРИСТИКИ	5
Обзор	5
Основная информация	5
Размеры	5
Скорость, вместимость и масса	5
Размещение	6
Корпус и палуба	6
Информация о двигателе	6
ПОДРОБНОЕ ОПИСАНИЕ	7
Transom and Cockpit	7
Upper Salon	7
Helm	7
Lower Salon and Galley	8
Master Stateroom	8
VIP Cabin	8
Bow	9
Hard Top	9
Electrical	9
Mechanical	10
Exclusions	10
Disclaimer	10
Исключения	10
Отказ от ответственности	10
ФОТОГРАФИИ	12
Profile Port	12
Port Bow	12
At Rest	12

Overhead	12
Swim Platform	12
Transom	12
Tender Garage (Tender Not Included)	13
Cockpit	13
Seating with Dinette	13
Cockpit Port	13
Entertainment Station with Fridge Below	13
Cockpit Docking Station	13
Upper Salon	14
Dinette to Port	14
Expandable Table	14
Pop-Up TV Down	14
Ice Maker	14
Pop-Up TV Up	14
Salon Aft	15
Helm	15
Fusion Stereo and AC Controls	15
Helm 1	15
Joystick	16
Helm 2	16
Lower Salon 1	16
Lower Salon 2	16
Lower Salon	16
Galley to Port	16
Master Stateroom Entrance	17
Lower Salon Facing Aft	17
Full Beam Master	17
Full Beam Master 2	17

Hull-Side Windows	17
Full Beam Master 3	17
Master Head 1	18
Master Head 2	18
VIP Stateroom	18
VIP Stateroom Aft	18
VIP Head	19
VIP Stateroom Stbd	19
VIP head	19
Bow	19
Sunpad	19
Windlass and Anchor	19
Bow Facing AFt	20
Glass Windshield	20
Radar Arch with SAT TV and FLIR	20
Engine Room Access	20
Engine Room 2	20
Engine Room 3	20
Engine Room 4	21
Tender Garage Access from Cockpit	21
Photo-54	21
Photo-55	21
<b>КОНТАКТЫ</b>	<b>22</b>
Контактная информация	22
Телефоны	22
Время работы	22
Адрес	22

# ХАРАКТЕРИСТИКИ

## Обзор

*Rewind* is a beautiful Beneteau 49GT 2014 for sale in Key Biscayne and one of the lowest-priced in the US. Two Volvo joystick docking stations along with a bow thruster allow for very easy maneuverability.

### Key Features:

- Only 330hrs on Volvo IPS600's
- Cockpit Joystick Docking Station
- FLIR Thermal Camera
- Raymarine Electronics Package
- Full Beam Ensuite Master
- Teak Cockpit and Swim Platform

## Основная информация

Тип судна: Крейсер

Подкатегория: Sport Cruiser

Модельный год: 2014

Год постройки: 2014

Страна: United States

## Размеры

Длина общая: 49' 0" (14.94m)

Ширина: 14' 0" (4.27m)

Макс. осадка: 3' 7" (1.09m)

## Скорость, вместимость и масса

Крейс. скорость: 24 Kts. (28 MPH)

Макс. скорость: 27 Kts. (31 MPH)

Водоизмещение: 33000 Pounds

Вместимость воды: 170 Gallons

Объем топливного бака: 344 Gallons

## Размещение

---

**Всего кают:** 2

**Всего коек:** 2

**Всего ком. состава:** 2

## Корпус и палуба

---

**Материал корпуса:** Fiberglass

## Информация о двигателе

---

**Двигатели:** 2

**Производитель:** Volvo

**Модель:** D6 IPS 600

**Тип двигателя:** Inboard

**Тип топлива:** Diesel

---

# ПОДРОБНОЕ ОПИСАНИЕ

---

## Transom and Cockpit

---

- Teak Swim Platform with Ladder
- Tender Garage with Storage for Fenders and Swim Ladder, Electric Winch for Tender, and Major Access to Engines
- Teak Cockpit
- Cockpit IPS Joystick Docking Station
- Seating for 6 with Dinette that Converts to Sun Pad
- Cockpit Entertainment Station with Sink, Grill, Refrigerator, and Storage
- Fusion Stereo and Water Tight Bose Speakers
- Cockpit Shower Hose
- Storage for Life Raft on Starboard Side
- 1 Grab Rail Behind the Cockpit Bench Seat
- LED Lighting
- (4) Cleats

## Upper Salon

---

- 3-Leaved Sliding Window Door Entrance with Curtains (Mirror Tinted)
- U-Shaped Settee with Expandable Salon Table Matching Joinery with Electric Pedestal
- Bar with Panoramic View (Storage Space in Bar Unit and Under Bench Seats)
- Ice Maker
- 37" LCD TV Mounted on Electric "Disappearing" Stand
- Fusion MS-AV700i - CD player - AM/FM Radio
- Retractable Sunroof
- (2) Crusair Air Conditioning Units
- Transparent Windscreen, Black-Lacquered Uprights
- Mirror Tinted Side Windows with Blinds
- 2 Windscreen Wipers with Washers

## Helm

---

- Pilot and Copilot Bench with Bolster Function
- Instrument Panel Painted with Silk Finish (Chestnut Paint)
- Dual Raymarine Hybrid Touch MFDs (Chart Plotter; Depth Sounder, GPS, Radar, FLIR, Fish Finder, Etc.)
- Raymarine Autopilot
- Raymarine VHF
- Volvo IPS Joystick and Throttles

- Compass, Revolution counter, Tiller Angle Indicator
- Engine Function Indicators on 7" Volvo Digital Display
- Quick Bow Thruster Control
- Spotlight Control
- 12v Socket Outlet
- Glove Box

---

## Lower Salon and Galley

---

- L-Shaped Settee
- Flat Screen TV
- Optimum storage space - Introducing Magic Corner (Lazy Susan)
- Stainless Steel Sink with Mixer Tap
- Kenyon Cooktop (2 Burners)
- White Corian Countertops
- 24L Microwave Oven
- 270L Refrigerator/Freezer
- Trash and Recycling Bin
- Cutlery Storage
- Opening Hull Porthole
- Dark Oak Laminate Floors
- Beige-Lacquer Finished Cabinetry

---

## Master Stateroom

---

- Full Beam Master
- Double Berth (6'7" x 5'7" Strut-Mounted Bed) with Marine Mattress Padded Bedstead (Alcantara)
- Fusion Stereo
- Wardrobes, Hanging Closets, Storage
- Spotlight and Reading Lighting
- 2 Panoramic Opening Porthole-Fitted Port Lights with Blinds
- Large Flat Screen TV
- Master Head with VacuFlush Electric Toilet, Shower Separated with 3 Swing Doors, Basin with Mixer Tap, Mirror and Storage Space

---

## VIP Cabin

---

- Island Queen Berth with Marine Mattress
- Flat Screen TV



- Panoramic Opening Porthole
- Fitted Portlights with Blinds
- Fusion Stereo
- Closets and Storage Drawers
- Ivory carpet
- 2 Drawers Beneath Bunk for Stowage
- Strut-Mounted Bed
- Spotlight and Reading Light
- Mirror
- VIP Head with VacuFlush Electric Toilet, Shower Separated with 2 Swing Doors, Basin with Mixer Tap, and Mirror and Storage Space

## Bow

---

- MAXPOWER Bow Thruster
- Forward Sun Deck: 7'7" x 6'7"
- Forward Sun Pad with Back Rests and (4) up Holders
- Teak Decking on Forward Peak
- Half Open Pulpit in SS with Guard Rail and Hand Rail
- 2 SS Handrails on Access to Catwalk Steps
- Fender Rings Underneath Hand Rails

## Hard Top

---

- Retractable Sunroof
- SAT TV: KVH TracVision TV3
- Raymarine Closed Array Radar
- FLIR Thermal Camera
- (2) Air Horns
- Spot Light
- Anchor Light
- VHF Antenna
- Navigation Lights

## Electrical

---

- 8 Batteries 12V (4 Engine batteries 50Ah + Service Batteries 140Ah)
- 3 Bilge Pumps: 2 Electric pumps - 1 Manual Pump
- 2 Extinguishers
- Inverter 12V/24V Battery Isolator
- BatteryCharger 24V/60Ah

- Cummins Onan 13kW Generator 220V (630hrs)
- Shorepower (1 x 50 amp on Glendenning)

---

## Mechanical

---

- Propulsion IPS: 2 x Volvo D6 IPS 600 - 2 x 435 HP Diesel (330hrs)
- Fuel filter with Decanter
- Sea Water Filter
- Air Intakes on the Deck for Engine Compartment Cooling
- Hot Air Extraction Forced by Electric Ventilators
- Engine Room Foam Soundproofed
- Fire Extinguishing System Activated from the Helm
- Stainless Steel Fuel Filler

---

## Exclusions

---

- Viking Raft
- Dinghy and Electric Motor
- Paddle Board
- Personal Effects

---

## Disclaimer

---

The Company offers the details of this vessel in good faith but cannot guarantee or warrant the accuracy of this information nor warrant the condition of the vessel. A buyer should instruct his agents, or his surveyors, to investigate such details as the buyer desires validated. Hours listed may vary from actual hours due to recent use. Purchaser is encouraged to verify hours prior to purchase. This vessel is offered subject to prior sale, price change, or withdrawal without notice.

---

## Исключения

---

При продаже яхты исключаются личные вещи владельца.

---

## Отказ от ответственности

---

Компания предоставляет описание судна или яхты добросовестно, но не может гарантировать точность этой информации, а также не ручается за техническое состояние. Покупатель должен проинструктировать своих агентов или оценщиков исследовать представленную информацию более подробно, по собственному желанию. Продажа судна или яхты, изменение цены или снятие с продажи будет происходить без

предварительного уведомления.

# ФОТОГРАФИИ

**Profile Port**



**Port Bow**



**At Rest**



**Overhead**



**Swim Platform**



**Transom**



**Tender Garage (Tender Not Included)**



**Cockpit**



**Seating with Dinette**



**Cockpit Port**



**Entertainment Station with Fridge Below**



**Cockpit Docking Station**





**Upper Salon**



**Dinette to Port**



**Expandable Table**



**Pop-Up TV Down**



**Ice Maker**



**Pop-Up TV Up**



Salon Aft



Helm



Fusion Stereo and AC Controls



Helm 1





**Helm 2**



**Joystick**



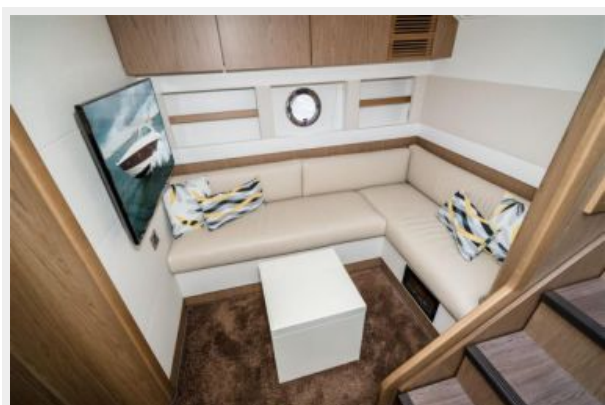
**Lower Salon 1**



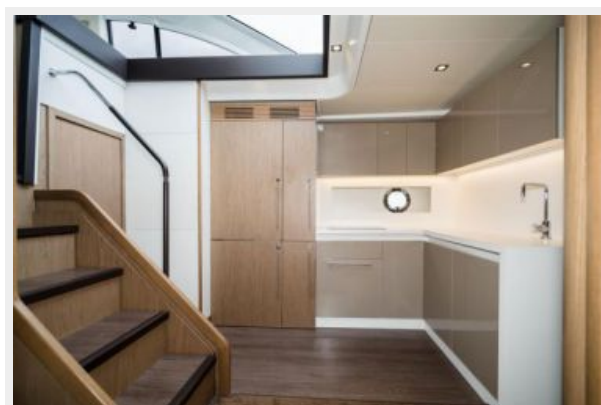
**Lower Salon 2**



**Lower Salon**



**Galley to Port**





**Lower Salon Facing Aft**



**Master Stateroom Entrance**



**Full Beam Master**



**Full Beam Master 2**



**Hull-Side Windows**



**Full Beam Master 3**



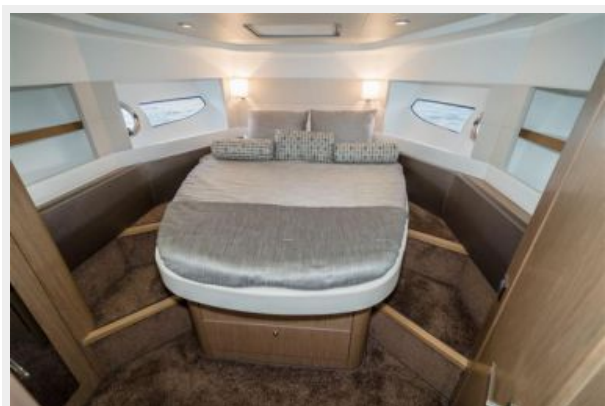
**Master Head 1**



**Master Head 2**



**VIP Stateroom**



**VIP Stateroom Aft**



**VIP Stateroom Stbd**



**VIP Head**



**VIP head**



**Bow**



**Sunpad**



**Windlass and Anchor**





**Bow Facing Aft**



**Glass Windshield**



**Radar Arch with SAT TV and FLIR**



**Engine Room Access**



**Engine Room 2**



**Engine Room 3**



**Engine Room 4**



**Tender Garage Access from Cockpit**



**Photo-54**



**Photo-55**



# КОНТАКТЫ

---

Андрей Шестаков (Andrey Shestakov) – ведущий яхтенный брокер отдела продаж яхт и судов компании Shestakov Yacht Sales Inc. Официальный представитель Shestakov Yacht Sales Inc. для русскоговорящих клиентов в центральном офисе компании в Майами/Форт Лодердейл/Флорида/США.

## Контактная информация

---

Email: [andrey@shestakovyachtsales.com](mailto:andrey@shestakovyachtsales.com)

Web: [shestakovyachtsales.com](http://shestakovyachtsales.com)

## Телефоны

---

Краснодарский край: **+7(918)465-66-44**

США, Майами, Флорида: **+1(954)274-4435**

## Время работы

---

Понедельник – Суббота: **9:00 - 21:00**  
EDT

Воскресенье: **Закрито**

## Адрес

---



Harbour Towne Marina, 850 NE 3rd St,  
STE 213, Dania, FL 33004