

## WILD DUCK — HORIZON



**Судостроитель:** HORIZON

**Год постройки:** 2015

**Модель:** Моторная яхта

**Цена:** **ЦЕНА ЯХТЫ ПО ЗАПРОСУ**

**Местонахождение:** United States

**Длина общая:** 94' 0" (28.65m)

**Ширина:** 21' 0" (6.40m)

**Мин. осадка:** 5' 4" (1.63m)

**Макс. осадка:** 5' 8" (1.73m)

**Крейс. скорость:** 19 Kts. (22 MPH)

**Макс. скорость:** 21 Kts. (24 MPH)

Купить **WILD DUCK — HORIZON** а также выбрать подходящую вам яхту из нашего каталога яхт вам поможет опытный яхтенный брокер Андрей Шестаков. На сегодняшний день компания **Shestakov Yacht Sales Inc.** имеет большое количество яхт в собственном списке продаж, а также тесно сотрудничает со всеми крупными яхтенными производителями по всему миру.

Для того чтобы купить яхту **WILD DUCK — HORIZON** а также проконсультироваться по любому вопросу связанному с покупкой, продажей, чартером яхт позвоните по телефону **+7(918)465-66-44**.

# ОГЛАВЛЕНИЕ

|  |    |
|--|----|
| ОГЛАВЛЕНИЕ                             | 2  |
| ХАРАКТЕРИСТИКИ                         | 9  |
| Обзор                                  | 9  |
| Основная информация                    | 9  |
| Размеры                                | 9  |
| Скорость, вместимость и масса          | 9  |
| Размещение                             | 10 |
| Корпус и палуба                        | 10 |
| Информация о двигателе                 | 10 |
| ПОДРОБНОЕ ОПИСАНИЕ                     | 11 |
| WALKTHROUGH                            | 11 |
| Foredeck                               | 11 |
| Side Decks                             | 12 |
| Flybridge                              | 12 |
| Boat Deck Grill                        | 13 |
| Flybridge Electronics                  | 13 |
| Aft Deck                               | 14 |
| Main Salon                             | 14 |
| Main Deck Day Head                     | 15 |
| Galley                                 | 15 |
| Lower Helm                             | 16 |
| Master Stateroom                       | 17 |
| Master Head                            | 17 |
| Forward Companionway                   | 18 |
| Forward and Starboard Guest Staterooms | 18 |
| Port and Starboard Guest Heads         | 18 |
| VIP Stateroom                          | 19 |
| VIP Head                               | 19 |

|                             |    |
|-----------------------------|----|
| Crew Quarters               | 19 |
| Crew Galley                 | 20 |
| Crew Quarters Companionway  | 20 |
| Electronics Cabinet         | 20 |
| Captains Cabin              | 21 |
| Crew Cabin                  | 21 |
| Swim Platform               | 22 |
| Hydraulic Swim Platform     | 22 |
| Engine Room                 | 23 |
| Mechanical Systems          | 23 |
| Oil Change System           | 23 |
| Polishing                   | 24 |
| Ventilation System          | 24 |
| Fuel Tanks                  | 24 |
| Fuel Transfer Pump          | 24 |
| Generators                  | 24 |
| Electrical Systems          | 25 |
| Battery Chargers/Batteries  | 25 |
| A/Sea Converter             | 25 |
| Hydraulic System            | 25 |
| Thrusters                   | 25 |
| Stabilizers                 | 26 |
| Davit                       | 26 |
| Watermaker                  | 26 |
| Water System                | 26 |
| Saltwater Wash Down         | 26 |
| Head System                 | 27 |
| Central Vac System (Nutone) | 27 |
| Bilge Pumps                 | 27 |

|  |           |
|--|-----------|
| Fire System                                      | 27        |
| Anchor Systems                                   | 27        |
| Ladders  | 28        |
| Props  | 28        |
| Air Conditioning System                          | 28        |
| C.C.T.V. Systems Cameras                         | 28        |
| Octoplex Digital Breaker System (UPGRADE)        | 29        |
| Air Draft  | 29        |
| Additional Features                              | 29        |
| Recent Upgrades June 2019                        | 29        |
| Brokers Comments                                 | 29        |
| Exclusions                                       | 30        |
| Disclaimer                                       | 30        |
| Исключения                                       | 30        |
| Отказ от ответственности                         | 30        |
| <b>ФОТОГРАФИИ</b>                                | <b>31</b> |
| Foredeck Chaise Lounges with Adjustable Backrest | 31        |
| Foredeck Seat                                    | 31        |
| Foredeck   | 31        |
| Foredeck   | 31        |
| Foredeck Seat                                    | 31        |
| Dual Anchor System                               | 31        |
| Sidedeck   | 32        |
| Flybridge  | 32        |
| Flybridge  | 32        |
| Flybrige Helm / Custom Windshield                | 32        |
| Flybridge Helm                                   | 32        |
| Flybridge  | 32        |
| Flybridge  | 33        |

|  |    |
|--|----|
| Flybridge Stand Behind Bar                                 | 33 |
| Flybridge Bar  | 33 |
| Flybridge  | 33 |
| Flybridge  | 33 |
| Flybridge  | 33 |
| Flybridge Flip Down TV                                     | 34 |
| Flybridge  | 34 |
| Flybridge  | 34 |
| Flybridge Gas Grill  | 34 |
| Flybridge Gas Grill  | 34 |
| Flybridge Boat Deck  | 34 |
| Flybridge Boat Deck  | 35 |
| DSC04500   | 35 |
| Aft Deck   | 35 |
| Afr Deck   | 35 |
| Aft Deck   | 35 |
| Aft Deck   | 35 |
| Aft Deck Custom Cabinet                                    | 36 |
| Aft Deck   | 36 |
| Aft Deck Custom Glass / Ice Maker and Refrigerator Cabinet | 36 |
| Aft Deck Lighting / Passerelle Cabinet                     | 36 |
| Aft Deck Remote Decking Station                            | 37 |
| Main Salon   | 37 |
| Main Salon   | 37 |
| Main Salon   | 37 |
| Breakfast Bar  | 37 |
| Main Salon   | 37 |
| Main Salon   | 38 |
| Main Salon   | 38 |

|  |    |
|--|----|
| Custom Wine / Stemware / Glass / Wine Coolers        | 38 |
| Main Salon   | 38 |
| Custom Wine / Stemware / Glass / Wine Cooler Cabinet | 38 |
| On Deck Day Head                                     | 38 |
| Country Kitchen Style Galley                         | 39 |
| Galley Dinette                                       | 39 |
| Galley 32" TV  | 39 |
| Galley   | 39 |
| Galley Lower Helm                                    | 39 |
| Galley   | 39 |
| Master Stateroom                                     | 40 |
| Master Stateroom                                     | 40 |
| Master Stateroom                                     | 40 |
| Master Stateroom                                     | 40 |
| Master Stateroom / 48" Swing Out TV                  | 40 |
| Master Stateroom                                     | 40 |
| Master Head / Heated Granite Floor                   | 41 |
| Master Head  | 41 |
| Forward Companionway Optional Laundry Center         | 41 |
| Forward Owner / Guest Companionway                   | 41 |
| Forward Staircase to Owners / Guests Quarters        | 41 |
| Forward Staircase / Companionway                     | 41 |
| Port Guest Stateroom                                 | 42 |
| Port Guest Starboard                                 | 42 |
| Port Guest Stateroom                                 | 42 |
| Port Guest Stateroom                                 | 42 |
| Starboard Guest Stateroom                            | 42 |
| Starboard Guest Stateroom                            | 42 |
| Port Guest Stateroom Head                            | 43 |

|  |    |
|--|----|
| Starboard Guest Stateroom Head                       | 43 |
| Forward VIP Guest Stateroom                          | 43 |
| Forward VIP Guest Stateroom                          | 43 |
| VIP Stateroom  | 43 |
| VIP Stateroom  | 43 |
| Forward VIP Stateroom Guest Head                     | 44 |
| Crew Galley  | 44 |
| Crew Galley  | 44 |
| Crew Galley  | 44 |
| Crew Galley  | 44 |
| Crew Galley  | 44 |
| Crew Galley  | 44 |
| Aft Crew Quarters Stairwell                          | 45 |
| Crew Stairwell from Main Salon                       | 45 |
| Crew Quarters Companionway / Engine Room Access Door | 45 |
| Crew Washer / Dryer                                  | 45 |
| Captains Head  | 46 |
| Captains Cabin                                       | 46 |
| Crew Cabin   | 46 |
| Captains Ensuite Head                                | 46 |
| Crew Cabin   | 47 |
| Crew Cabin Ensuite Head                              | 47 |
| Crew Cabin Ensuite Head                              | 47 |
| Engine Room Forward                                  | 47 |
| Engine Room Aft                                      | 47 |
| CAT Engine Monitor                                   | 47 |
| Starboard Main Engine                                | 48 |
| Port Main Engine                                     | 48 |
| Engine Room  | 48 |
| Transom / Passerelle                                 | 48 |

---

|                             |    |
|-----------------------------|----|
| Transom                     | 48 |
| TNT Hydraulic Swim Platform | 48 |
| Transom Crew Access Door    | 49 |
| Cruising 19 Knots           | 49 |
| DSC04631                    | 49 |
| Cruising 19 Knots           | 49 |
| LAYOUT                      | 49 |
| КОНТАКТЫ                    | 50 |
| Контактная информация       | 50 |
| Телефоны                    | 50 |
| Время работы                | 50 |
| Адрес                       | 50 |



# ХАРАКТЕРИСТИКИ

## Обзор

“WILD DUCK” was custom built for her present original owner. This is his second Horizon and is presently building a larger Horizon M.Y. No expense has been spared from her extensive list of equipment, upgrades and care from her full-time crew since delivery.

“WILD DUCK” represents as a new yacht without the new boat construction time wait. A must see if you desire a well optioned perfectly clean yacht.

## Основная информация

Тип судна: Моторная яхта

Модельный год: 2016

Год постройки: 2015

Страна: United States

Верх: Hardtop

Открытая палуба мостика: Да

## Размеры

Длина общая: 94' 0" (28.65m)

Ширина: 21' 0" (6.40m)

Мин. осадка: 5' 4" (1.63m)

Макс. осадка: 5' 8" (1.73m)

## Скорость, вместимость и масса

Крейс. скорость: 19 Kts. (22 MPH)

Макс. скорость: 21 Kts. (24 MPH)

Чистый вес: 85 Pounds

Вместимость воды: 500 Gallons

Вместимость сточного бака: 300 Gallons Объем топливного бака: 2700 Gallons

## Размещение

---

Всего кают: 4

Спальные места: 8

Всего ком. состава: 6

Каюта капитана: Да

Каюты экипажа: 1

Койки экипажа: 4

## Корпус и палуба

---

Материал корпуса: Fiberglass

Материал палубы: Fiberglass

Комплектация корпуса: Modified V-Hull

Дизайнер корпуса: John Lindblohm

## Информация о двигателе

---

Двигатели: 2

Производитель: Caterpillar

Модель: C-32 Acert

Тип двигателя: Inboard

Тип топлива: Diesel

---

# ПОДРОБНОЕ ОПИСАНИЕ

---

## WALKTHROUGH

---

"Wild Duck" features four well appointed staterooms each with ensuite Heads.

Her Main Deck features custom hydraulic swim platform with access to Aft Deck from port & stbd. stairwells. Aft Deck features a large builtin Settee with dining table, port and stbd. boarding gates, teak decking, wet bar, access to Main Salon and port & stbd. walk around side decks, access to Flybridge/boat deck.

Main Salon features access stairwell to Crew/Engine Room. Custom open forward bulkhead to Main Deck Galley with breakfast bar and bar stools. To starboard on deck Day Head. Access stairwell to Flybridge.

Forward of Main Salon Country Kitchen Style Galley with large forward viewing windows, "U" shaped Dinette, inclement weather Lower Helm, access to Lower Deck Owner/Guest Quarters.

Owner/Guest Quarters features full beam Master with king berth, large port and stbd. viewing port lights, companionway with optional stack washer and dryer, port and stbd. Twin Berth Staterooms, forward bow VIP Guest Stateroom with centerline queen berth. All Staterooms with ensuite Heads. Access to Flybridge from starboard side Galley or Aft Deck, Forward Center Helm with port and stbd. Companion Seats, custom solid windshield with EZ2CY side enclosures, custom stand behind bar with 3 stools. To stbd. large "U" Settee with tables, aft to stbd. side grill center and boat deck. All in air condition comfort. Crew Quarters aft access by stairwell. Aft port corner of Main Salon and Transom Door. Captain and Crew Cabins for (4) Crew members each Cabin with ensuite Heads with stall showers, Crew Galley with Dinette.

## Foredeck

---

- Forepeak seat with cushions, cover, storage below
- Bow flag staff 26' stainless steel removable
- Stereo speakers (2) 5" Bose®
- Deck courtesy lights
- Chain locker access/(Note) divided chain locker
- Port and stbd. anchor windlass's with up and down deck controls
- Port and stbd. stainless steel 18" cleats w/ fairleads with rollers
- Nonskid paint deck
- Foredeck seat with cushions and cover
- VIP Stateroom escape hatch
- Sunpad with cushions, covers, adjustable back rest, port and stbd. drink holders, stainless steel grab rails
- Port and stbd. trunk cabin storage lockers

- Raised bulwarks 36"
- Plug in for remote anchor control with holder
- 2 ¼ stainless steel bulwarks grab rail
- Galley forward viewing windows with textiline black shade cover
- (3) 43" Windshield Wipers with washers and stainless steel wiper arms (**Speich**)

---

## Side Decks

---

- 17" width/nonskid side decks/deck drains
- Raised bulwarks 36"/courtesy deck lights
- Port and stbd. ¼ and ¾ 13" stainless steel cleats with fairleads
- Port and stbd. boarding gates / (**Note**) open inboard
- 2 ¼ stainless steel bulwarks grab rail
- Port and stbd. side deck / freshwater fill, fuel, holding tank
- Portside deck/hold tank/water/fuel deck fittings
- Port and side decks with overhead white LED lights

---

## Flybridge

---

- Headroom 6'11"
- Hardtop with custom glass windshield
- EZ2CY polycarbon side curtains
- Painted nonskid deck
- Access from Main Cabin or Aft Deck stairwell
- Aft Deck stairwell with sliding safety/weather hatch
- Sliding stainless/ Lexan hatch from Main Cabin
- Centerline Helm Seat with armrest/footrest and cover (**Stidd**)
- Centerline Helm Console with cover
- Port and stbd. bench companion seats with cushions and cover
- Flagstaff 55" removable polished stainless steel
- Overhead LED lights on dimmers
- Air conditioning reverse cycle
- (2) units: (1) 36,000 BTU/ (1) 24,000 BTU
- (4) 5" Bose® Stereo Speakers
- TV 32" **Samsung** fold up with Bose Lifestyle Stereo Amplifier
- Flybridge TV with DSS receiver - US and Latin America receiver
- Stbd. side 10 person "U" shaped Settee with cushions, cover and storage
- Hi/Lo stainless/glass dining/cocktail tables
- Portside stand behind bar with (4) bar stools
- Bar stools with back rest, swivel, stainless steel bases with footrest's
- Bar storage cover and bar stool covers
- Safety Euro rails around boat deck

- **(Note)** VHF antennas positioned for ease to lower
- Flybridge Exterior Cabin non-skidded for maintenance ease
- Flybridge bar with Corian counter and tinted glass bar top, ice maker/Raritan, undercounter refrigerator/Dometic, stainless steel sink with Corian lid, faucet with pull out sprayer (Grohe)

## Boat Deck Grill

---

- Stainless steel 22" W x 13" D LP gas with lid and storage cover
- Storage below with fire extinguisher
- Corian countertop with storage below

## Flybridge Electronics

---

- (2) \*8215 Garmin Multi-function Display's 15"
- (1) Radar 4' open array / 72 miles / 12 kW
- Radar 6' open array / 72 miles / 12 kW
- Autopilot / with rudder indicator / Garmin
- Satellite weather
- Compass magnetic 4" Ritchie
- Log, wind-speed, direction, time, GPS position, etc. Garmin
- VHF Garmin GHS-10 black box with remote speaker's and handset's
- AIS receiver 600 class B transceiver
- Night vision camera (Flir) with cover
- Search lights (2) Sanshin HR-1012 (1) face fwd (1) face aft
- 15" display screen / CCTV's / Ships Systems (Maretron)
- Trim tabs / Bennett with position light monitors
- Stabilizer control unit (ABT Trac)
- Port and stbd. anchor up / down controls with chain counters / Maxwell AA560
- Head alarm system (Hamann)
- Engine Room ventilation control system
- Horns dual trumpet Buells with compressor
- Fire system control unit (Seafire)
- Generator remote start / stop and gauge displays
- Cat electronic clutch/ throttles with synchronizer and backup system
- Windshield wipers (3) 31" with washers (Speich)
- Bow and Stern hydraulic thruster controls (ABT Trac)
- Helm Wheel 24" destroyer style stainless steel
- Main Engine start / stops and low idle
- EPIRB ACR
- Life ring 24" with holder

## Aft Deck

---

- 7'3" Headroom
- 10' Length
- Teak decking
- Port and stbd. boarding gates / **(Note)** Open inboard
- Port and stbd. child safety gate to swim platform
- Wet bar with Corian counter top with storage cover
- Undercounter stainless steel refrigerator with freezer (Dometic)
- Icemaker stainless steel / Raritan
- Custom glassware cabinet
- Upgraded cabinet with Aft Deck lights / 110v outlet / underwater lights, switches
- Lights / docking lights / name boards / Passerelle controls / D.C. shutoff
- Overhead LED lights on dimmer
- CCTV camera color with pan and zoom
- Aft Deck table / Hi-Lo + In-Out slide
- Port and stbd. stainless steel 19" Aft Deck cleats with upgrade tender tow backing
- Port and stbd. stainless steel fairleads with rollers
- Aft Deck Settee with cushions, storage below, port and stbd. drink holders, decorator pillows, storage cover
- Port and stbd. stairwells to swim platform with teak steps and courtesy lights
- Circular stairwell with teak steps and courtesy lights to Flybridge
- Access sliding glass door to Main Salon
- Overhead speakers (2) 6" Bose®
- Raised bulwarks 42"
- Port locker with remote control with 25' cord with starts and stops Main Engines

## Main Salon

---

- **Headroom 6'9"**
- Access through glass sliding door from Aft Deck manual
- Recessed deco ceiling with LED lighting on dimmers
- Deco ceiling white satin lacquer
- Paneling satin finished (Maple)
- Power window shades
- Flooring (Walnut)
- Area rug (**Eberson Slate**)
- Aft glass bulkhead / entry door with privacy curtain
- (2) 20 bottle champagne / wine coolers (Sub-Zero's)
- Built in liquor / glass / stemware cabinets
- A/V locker
- TV 54" Samsung flat screen with DSS receiver - US and Latin America receiver
- To port sectional sofa with storage below with end table

- Ottoman coffee table with tray
- End table
- (2) Swivel arm barrel chairs
- Additional storage lockers behind sectional sofa
- Additional locker with stemware and glasses
- Forward breakfast bar with 3 stools fixed with chrome bases and footrests
- To stbd. love seat with storage below and end tables
- Cabinet with storage and Scotsman clear ice cube machine
- Marble entrance floor
- White mullions with sconce lighting
- Bose® Home Theater System with Subwoofer
- Blue Ray disc player
- Apple TV media player
- In ceiling speakers
- Digital air condition control
- Smoke & Carbon Monoxide detectors

---

## Main Deck Day Head

---

- **Headroom 6'11"**
- Located forward stbd. corner of Main Salon
- Mirrored ceiling with LED lighting
- Window with privacy curtain
- Freshwater (Tecma) Head
- Vanity with under counter sink and storage below
- Vanity wall mirror
- Satin finished Maple cabinetry
- Granite flooring
- Air condition duct
- Granite counter top
- Hand towel holder
- Single lever chrome faucet (Grohe)
- Soap dispenser
- Privacy door
- Exhaust fan

---

## Galley

---

### Headroom 7'2"

---

Located forward of Main Salon is a Country Kitchen Style Dinette, large forward viewing windows with wipers, manual privacy blinds, exterior textiline cover, access to forward Owners / Guest Cabins, concealed full instrumentation Lower Helm, comfortable “U” shaped Dinette with upgraded leather upholstery. Dinette table Walnut with Granite inlay, additional swing out bar stool. Walnut hardwood flooring, overhead lacquered ceiling with LED lights on dimmers. Maple satin finish walls, grey lacquered under Granite counter cabinets, overhead hanging cabinets, Hi-Lo partition at breakfast bar to separate Main Salon. Two additional Sub-Zero drawers / built-in Sub-Zero Freezer and Refrigerator with Sub-Zero drawer below 2 each, 4 burner cook-top stove, GE / Profile with sea rails, oven GE / ADVANTIUM120 Convection, built-in GE Convection Microwave, GE Dishwasher, double stainless steel sink with garbage disposal, Granite flooring in Galley area. Privacy shades on port and stbd. corner windows. Built-in 32” Samsung remote control TV with DSS receiver. (2) 8” Bose® overhead speakers, Mareron 13” systems monitor screen in recessed cabinet, storage under Dinette, central vac outlet. Overhead smoke detector and Carbon Monoxide detector.

## Lower Helm

---

- Located just right of “U” shaped Dinette
- Recessed in a concealed cabinet
- Large forward viewing windows with retractable shades
- Windshield wipers (3) 43” Speich with washers
- Black Textiline windshield Cover
- (2) Garmin 8208 Remote Screens 8” with screen selector control
- Caterpillar electronic engine monitors
- Engine start / stops with low idle control
- Compass magnetic 4” Ritchie
- Helm Wheel 12”
- Electronic clutch and throttle with synchronizer
- Autopilot with rudder indicator (Garmin)
- Knot Log (Garmin)
- Stabilizer Control (ABT/Trac)
- Trim Tabs with indicator position lights (Bennett)
- Bow and Stern thruster control / hydraulic (ABT/Trac)
- Windshield wiper control 3 speed (Speich)
- Searchlight control remote (Sanshin HR-1012)
- Horn
- VHF (Garmin GHS) handset with remote speaker
- Anchor in/out remote switches



---

## Master Stateroom

---

- **Headroom 7'3"**
- Located Midship Full Beam
- Centerline king berth with nightstands and reading lights
- Deco ceiling white lacquer with white satin finish
- Carpeted flooring
- TV 48" Samsung with Bose® Home Theater System with DSS receiver-US and Latin America receiver
- Blue Ray Disc Player (Samsung)
- Apple TV media
- To starboard built in desk with file drawer and printer cabinet
- Desk chair
- Cedar lined hanging locker
- **(Note)** TV located fwd. bulkhead swings out
- Walk-in Cedar lined closet with safe
- Maple joinery work satin finish /Wedgewood bullnose's
- Fuel tanks between Engine Room and Master Stateroom
- Fuel tanks and sound proofing for additional quietness to Master Stateroom
- Headboard white leather
- Overhead LED lights on dimmers
- Air condition digital thermostat
- Small refrigerator
- Window with privacy and blackout curtain stbd. side
- Smoke and Carbon Monoxide detectors
- Overhead escape hatch 25" x 25" with ladder

---

## Master Head

---

- **Headroom 6'11"**
- Located to port of Master Stateroom
- Pocket privacy doors / waterfall glass
- Ceiling / acrylic mirror
- Overhead LED lights on dimmers
- Granite flooring / Coffee Velvet with stainless steel boarder
- Maple satin finish / cabinetry
- Stall shower with seat / soap / shampoo holders / hand sprayer
- Shower and Head stall with glass, stone Mosaic walls / Granite flooring
- Head counter top / Coffee Velvet Granite
- Freshwater Head (Тecma)
- His and Her sinks
- Window with privacy curtain and blackout shade
- Floor heated

---

## Forward Companionway

---

- **Headroom 7'**
- Access from circular stairwell in Galley
- Carpeted stairs
- Hand rail leather wrapped
- Overhead with LED lights on dimmer
- **(optional) Washer/Dryer (Bosch/Axxis) stack units**
- Carpeted flooring
- Access to Master, port and starboard Guest Cabins, Forward VIP Stateroom

---

## Forward and Starboard Guest Staterooms

---

- **Headroom 7'**
- Twin Berths with drawers under inboard berth
- Overhead with LED lights on dimmers
- Opening Port lights with blackout privacy shades
- Maple cabinetry
- Nightstand
- Headboard / dark brown leather
- Upper headboard / Grey mirror
- Reading lamps
- Privacy doors with locks
- Air condition digital thermostats
- Cedar lined hanging lockers
- Carpet flooring
- Smoke and Carbon Monoxide detectors

---

## Port and Starboard Guest Heads

---

- **Headroom 6'8"**
- Ensuite with staterooms
- Privacy doors
- Overhead LED lighting
- Air condition duct
- Maple satin finish cabinetry
- Granite countertop with back splash
- Opening port light with privacy shade
- Soap / shampoo holders
- Shower hand sprayer
- Mirrored medicine cabinet
- Granite flooring

---

## VIP Stateroom

---

- **Headroom 6'8"**
- Centerline queen berth with drawers below
- Overhead with LED lights on dimmers
- Overhead reading lamps
- Headboard leather
- Upper headboard beveled light Grey mirror
- Port & stbd. Deco wall panels with wall lamps
- Opening port lights with blackout privacy shades
- Carpeted flooring
- Maple satin finish paneling
- TV 32" Samsung with DSS receiver / US and Latin America receiver
- Stereo with DVD player with speakers (Fusion)
- Port and stbd. dressers
- Privacy door with lock
- Overhead escape hatch
- Smoke and Carbon Monoxide detectors

---

## VIP Head

---

- **Headroom 6'9"**
- Ensuite
- Overhead acrylic mirror with LED lights
- Stall shower with soap / shampoo holder
- Opening port light with privacy shade
- Granite flooring
- Freshwater (Tecma) Head
- Maple satin finish cabinetry
- Granite counter top
- White lacquered walls
- Mirrored medicine cabinet
- Air condition duct
- Exhaust fan
- Privacy door

---

## Crew Quarters

---

- **Headroom 6'6"**
- Located Aft

- Access from Transom Door or Port rear stairwell of Main Salon

## Crew Galley

---

- (2) Burner electric cooktop stove (Kenyon)
- Electric under counter oven (Fisher Paykel) convection
- Single stainless steel sink with pull out sprayer faucet
- Paper towel holder
- Microwave (Bosch)
- All appliances stainless steel
- Corian countertop
- Phone / intercom
- Opening port light with privacy drape
- Maple satin finish paneling
- Over and under counter storage lockers
- Overhead with LED lights on dimmers
- TV 27" Samsung with DSS receiver / U.S. and Latin America
- Stainless steel, stand up refrigerator with freezer (Summit)
- Access to rudder area
- "L" Settee with storage below and Dinette table
- Flooring PVC style (Formax) Walnut color
- Smoke and Carbon Monoxide detectors

## Crew Quarters Companionway

---

- **Headroom 6'6"**
- Overhead LED lighting
- Access hatches to tanks and bilges (4)
- Washer / built-in (Bosch)
- Dryer / built-in (Bosch)
- Storage / Soap cabinet
- Forward access door to Engine Room

## Electronics Cabinet

---

- DSS receiver for Galley TV / US and Latin America receiver
- DSS receiver for Captain's Cabin TV
- 4 in 1 HDMI switcher

- Stereo / Fusion with (6) - 9" flush mounted ceiling speakers
- Lift up steps (3) to rudder area

---

## Captains Cabin

---

- **Headroom 6'5"**
- Twin berths / each 6' L x 33" W
- Storage shelves under outboard berth
- Overhead LED lights
- Nightstand with drawers
- Cedar lined hanging locker
- (2) Opening port lights with privacy curtain
- TV 27" Samsung flat screen / Flush mounted with DSS receiver / US and Latin America receiver
- 4 in 1 HDMI switcher
- Stereo fusion with (2) x 9" speakers
- Outboard storage lockers
- Digital air condition control
- Smoke / heat / carbon monoxide monitors
- Privacy door with lock
- Ensuite Head with stall shower
- Shower with hand sprayer
- Opening port light with privacy curtain
- **Note:** Shower door swings in
- Vanity with locker below
- Air condition duct
- Mirrored medicine cabinet
- Techma freshwater Head
- Bath and hand towel racks
- Overhead LED lights
- Privacy Door
- Smoke and Carbon Monoxide detectors

---

## Crew Cabin

---

- **Headroom 6'5"**
- Located stbd. side
- Upper and lower berths 6'6" L x 30 " W
- Opening port light with privacy blind
- Cedar lined hanging locker
- Digital air condition control
- Nightstand with drawers

- Privacy door with lock
- Upper and lower berth overhead reading lights
- Digital air condition control
- Stereo / Fusion with (2) x 9" overhead speakers
- Access door to ensuite Head
- Head with stall shower with opening port light
- **Note:** Shower door swings in
- Shower with hand held sprayer
- Tecma freshwater Head
- Air condition duct
- Vanity with storage below
- Mirrored medicine cabinet
- Head access door from Crew Companionway

---

## Swim Platform

---

- 4'6" teak decking
- Port and stbd. stairwells with teak steps to Aft Deck with stainless grab rails
- Transom crew access water tight door with lock
- Removable custom stainless steel swim ladder 6 step with teak step pads
- Custom hand rails for swim ladder
- Flush storage deck locker for swim ladder
- Port & stbd 13" stainless steel cleats
- Concealed Transom hot/cold freshwater shower
- Sea water wash down
- Dockside water inlet with pressure regulator
- Port & stbd. 100 AMP x 80' Cablemaster / single phase
- Removable stainless steel Euro staple rails 2"
- **Passerelle** retractable 12' with left and right-hand rails and remote
- Recessed locker for hydraulic swim platform lift / lower switch

---

## Hydraulic Swim Platform

---

- 5' with teak decking
- Flush mount deck fitting for chocks and tie downs
- **(Note)** Waverunner is an exclusion
- Port & stbd. 10" stainless steel pop-up cleats
- (5) 2" stainless steel removable Euro rails
- Stainless steel rub rail

- Lift / lower switch located in Transom locker

## Engine Room

---

- **Headroom 6'6"**
- Full beam walk-in with watertight door with viewing window
- **Upgraded** diamond plate style flooring
- **Upgraded** workbench with 4" vice
- Soundproof insulation
- Paper towel holder
- Overhead rod holders (8)
- Fore and aft CCTV cameras with pan & zoom
- Manual fixed bilge pump with manifold
- Generators located outboard Main Engines
- Compressed air outlet with 15' x 1/4 " hose
- Fill valve for chilled air condition loop with pressure gauge
- Overhead LED lights 24v / 115v
- Batteries located on Centerline under floor
- Fuel tanks with sight gauges
- Vapor proof battery switches with battery parallel
- Stainless steel Engine beds
- Overhead stainless steel grab rails

## Mechanical Systems

---

- **Upgrade** Main Engines from Cat 1600 HP to **1900 HP Acerts**
- **Extended engine warranties until Nov 9<sup>th</sup>, 2020 or 1500 hrs.**
- Twin Caterpillar C-32 Acerts 1900 HP with 1031 hours
- Main Engine / Start / Stop with gauge monitors
- Dual turbo air sep's
- Manual fuel prime on primary filters
- Upgraded all sea strainers to Groco for ease of parts
- Gear / ZF 3055A / Ratio 2:520.1
- Shaft 4" with shaft electrolysis brushes / Aquamet 22 HS / SS
- Dripless seals with spare with crossover coolant line
- Dual 1000 Racor Fuel Filters with selector valve and vacuum gauges
- Stainless steel drip pans on Racors
- Down angle gears
- Main Engine block heaters

## Oil Change System

---

- **Upgrade** to 110V Oberdorf Brass Impeller Pump 1/3 HP
- Mains, gears, gensets selector valve

## Polishing

---

### (FUEL SYSTEM)

- Reverso 110V with Racor Element Filter and algae X with vacuum gauge
- Water separator filter

## Ventilation System

---

- Delta T Demister Filters
- Fore and Aft Engine Room intake / exhaust blowers
- Manual and auto pressure sensitive fan motors
- Auto shut down on all blowers with fire system

## Fuel Tanks

---

- Total capacity 2700 gallons / aluminum
- (3) Tanks with sight gauges
- Port and stbd. deck fills
- Tanks self-equalize port and starboard
- Forward tank fill by fuel transfer 680 gallon

## Fuel Transfer Pump

---

- 24v pump (Gianneschi) 25 G.P.M.

## Generators

---

- **(2) Onan upgraded** to 29 kW Port 1279.4 hrs. Starboard 1285.0 hrs.
- Sound shields
- Remote starts / crew stairwell / Flybridge remotes with digital screens
- Auto oil change
- Racor 500 water/separator filters with stainless drip bowl pans
- Water / Exhaust separator mufflers



---

## Electrical Systems

---

- 12v/24v/115v/240v single phase
- (2) 100 AMP x 80' shore cords on Cablemasters / Stern, port and starboard
- (1) 100 AMP Inlet / Port Foredeck locker / **Note:** No manual cord
- ISO boost on shore cords
- **(2) 25 KVA / A-Sea 50/60 cycle converters**
- **Upgraded** (2) 100 AMP shore services from (2) 50 AMP services

---

## Battery Chargers/Batteries

---

- Charles / 50 AMP /5000 SP series
- Start and house batteries
- Batteries (4) 255 AH/AGM start for Engines and Gen Sets
- Batteries (8) 210 AH/AGM ships 24v DC power / loc. VIP
- Batteries (2) 210 AH/AGM Emergency with 20-AMP charger / loc. under Bridge Helm
- Vapor proof battery switches
- All batteries in boxes with lids

---

## A/Sea Converter

---

- (2) 50/60 Cycle converters
- 25 KVA each
- Loc. Engine Room

---

## Hydraulic System

---

- ABT Trac / Oil reservoir 20 gallon with oil filter
- Power takeoffs port and starboard Main Engine Gears
- Hydraulic steering with pumps on port and starboard Engines
- Stabilizers, thrusters, anchors off Mains
- Davit and Passerelle have own hydraulic unit and platform

---

## Thrusters

---

- Bow thruster / hydraulic 45 HP / 16" tube
- Stern thruster / hydraulic 45 HP / 16" tube **optional**
- P.T.O. off port and stbd. Main Engines
- Dual prop / 5 blades Bow and Stern

---

## Stabilizers

---

- ABT Trac / Zero Speed / Digital
- 9 sq. Ft fins
- Next seal replacement / Nov. 2020 / every 5 years' service per Trac spec
- Located forward Engine Room port and starboard
- Controls up and lower Helms

---

## Davit

---

- Steelhead 2000lbs / hydraulic / **upgraded from 1500lbs**
- Boom and rotation, extends

---

## Watermaker

---

- Sea Recovery / Aqua Matic / Model A14C 1400-2
- Auto Flush / every 7 days
- 279 hours
- UV light filter
- 1400 G.P.D.

---

## Water System

---

- (2) Torro / 30 gal. / 1500 watts / 240 volt water heaters
- (1) Engine Room / (1) Master Stateroom
- (1) 110v Fresh water pump (Gianneschi)
- (1) 24v back up
- Stern deck dockside water inlet
- Water tank 500-gallon fiberglass
- 10" charcoal filter / canister style
- Freshwater wash downs / Flybridge / Foredeck / Transom
- Hot and cold water shower transom
- Hot water circulation pump 110v
- Port and stbd. deck fills

---

## Saltwater Wash Down

---

- 24V with pressure gauge and accumulator tank
- Wash downs Foredeck, Transom

---

## Head System

---

- Hamann Super Mini Plus / Model 230v
- USCG approved treatment plant
- Dockside pump out / overboard discharge pump 24v
- Holding tank 125 gal. and 75 gal tanks
- Maretron level audible alarm
- Freshwater Heads (Tecma)
- Overboard air vent inline charcoal filter
- 200 gallon holding tank with Hull vents with charcoal filters / fiberglass
- 100-gallon grey water tank with sump pump / fiberglass
- **Upgraded** Headhunter hoses on black water system

---

## Central Vac System (Nutone)

---

- Outlets, Galley, VIP, Master Stateroom, Crew Quarters

---

## Bilge Pumps

---

- (5) Auto / manual pumps
- (5) High water bilge alarms
- Bilge exhaust fans / manual
- (2) Hand pump manual bilge pumps
- Tied into Maretron System for high water notification

---

## Fire System

---

- Certification good until **Oct. 25th 2020**
- All handhelds in all cabin's certification until **Oct. 25th, 2020**
- Sea Fire 209 lbs. with auto and manual release
- Flybridge Remote Panel

---

## Anchor Systems

---

- Port and stbd. vertical windlass hydraulic off Main Engines / Maxwell 3500
- Port and stbd. polished stainless steel navy style 80 kg. anchors

- Port and stbd. anchor chain 250' x ½ " high tensile
- Stainless steel rollers with anchor pockets
- Stainless steel Bow Stem Strike plate
- Anchor freshwater wash down with manual operation switch
- Deck in/out foot switches
- Upgraded Bulwarks plug in handheld remote
- Remote Lower Helm and Flybridge Anchor in/out switches

## Ladders

---

- (4) Step vertical ladder with teak steps (Marquipt)
- (7) Step Sea Stair with teak handrail (Marquipt)
- Ladder boat deck to top of Hardtop

## Props

---

- **Upgraded** (5) blade
- 41" x 44.7" x 4" Nibral
- "S" Class / Dynamically balanced
- **Upgraded** from standard 4 blade

## Air Conditioning System

---

- Marine Air / Chilled Water System / Reverse Cycle
- (3) A/C / Chiller Compressors
- Back up air cond. pump on separate valves / raw water pump
- Digital thermostats in all Cabins
- Chill water fill valve with pressure gauge
- Flybridge 36,000 BTU + 24,000 BTU reverse cycle

## C.C.T.V. Systems Cameras

---

- (2) in Engine Room (1) Forward (1) Aft, (1) Aft Deck overhang

---

## Octoplex Digital Breaker System (UPGRADE)

---

- Monitors / stairwell base at Crew Quarters and stairwell
- Guest area
- AC breaker panels (4) Flybridge / 2 Forward Cabin / 5 Aft Cabins

---

## Air Draft

---

- Top of Antennas            38'
- Top of Mast                31'

---

## Additional Features

---

- U.S. Duty Paid
- Exterior detailed and waxed 2-18-19
- (2) Stainless Steel drink holders Flybridge Helm
- (1) Owner / Custom built
- Rare (4) Stateroom and Crew

---

## Recent Upgrades June 2019

---

- 1000-Hour Service performed / C-32 CATS
- Bottom prepped and painted (2) coats, Black Micron CSC
- Prop speed bow & stern thrusters, rudders, shafts, props, struts, trim tabs, TNT Lift Mechanism
- Zincs replaced, shafts, rudders, trim tabs, TNT Lift, port & stbd. Transom
- Replace tail and intermediate Cutlass Bearings
- Drop and replace rudder Cutlass Bearings
- Remove / reinstall, true and balance 5 blade props
- Replace dripless seals on rudders

---

## Brokers Comments

---

“WILD DUCK” was custom built for her present original owner. This is his second Horizon and is presently building a larger Horizon M.Y. No expense has been spared from her extensive list of equipment, upgrades and care from her full-time crew since delivery.

“WILD DUCK” represents as a new yacht without the new boat construction time wait. A must see if you desire a well optioned perfectly clean yacht.

---

## Exclusions

---

- Aft Deck Chairs

---

## Disclaimer

---

Specifications are provided for informational purposes only. Data was obtained from sources believed reliable but is not guaranteed by owner or brokers. Buyer assumes responsibility to verify all speeds, capacities, consumption's and other measurements contained herein and otherwise provided and agrees to instruct his agents to confirm such details prior to purchase. Vessel is subject to prior sale, price and inventory changes and withdrawal from market without notice.

---

## Исключения

---

При продаже яхты исключаются личные вещи владельца.

---

## Отказ от ответственности

---

Компания предоставляет описание судна или яхты добросовестно, но не может гарантировать точность этой информации, а также не ручается за техническое состояние. Покупатель должен проинструктировать своих агентов или оценщиков исследовать представленную информацию более подробно, по собственному желанию. Продажа судна или яхты, изменение цены или снятие с продажи будет происходить без предварительного уведомления.

# ФОТОГРАФИИ

**Foredeck Chaise Lounges with Adjustable Backrest**



**Foredeck Seat**



**Foredeck**



**Foredeck**



**Foredeck Seat**



**Dual Anchor System**



**Siddeck**



**Flybridge**



**Flybridge**



**Flybridge Helm / Custom Windshield**



**Flybridge Helm**



**Flybridge**





**Flybridge**



**Flybridge Stand Behind Bar**



**Flybridge Bar**



**Flybridge**



**Flybridge**



**Flybridge**



**Flybridge**



**Flybridge Flip Down TV**



**Flybridge**



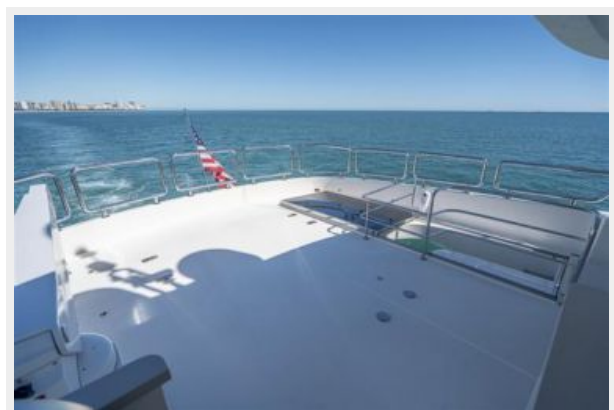
**Flybridge Gas Grill**



**Flybridge Gas Grill**



**Flybridge Boat Deck**



**Flybridge Boat Deck**



**DSC04500**



**Aft Deck**



**Afr Deck**



**Aft Deck**



**Aft Deck**



**Aft Deck**



**Aft Deck Custom Cabinet**



**Aft Deck Custom Glass / Ice Maker and Refrigerator Cabinet**



**Aft Deck Lighting / Passerelle Cabinet**



### Aft Deck Remote Decking Station



### Main Salon



### Main Salon



### Main Salon



### Breakfast Bar



### Main Salon



**Main Salon**



**Main Salon**



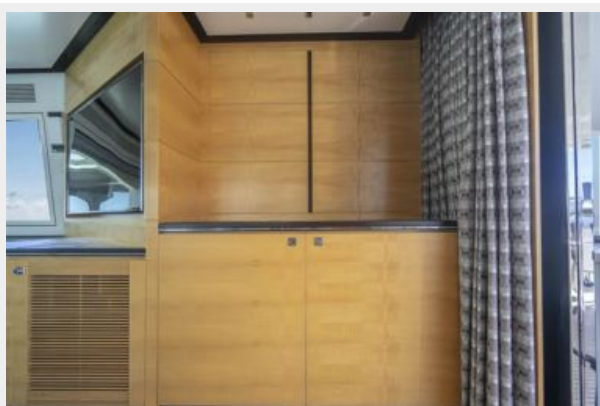
**Custom Wine / Stemware / Glass / Wine Coolers**

**Main Salon**



**Custom Wine / Stemware / Glass / Wine Cooler Cabinet**

**On Deck Day Head**



**Country Kitchen Style Galley**



**Galley Dinette**



**Galley 32" TV**



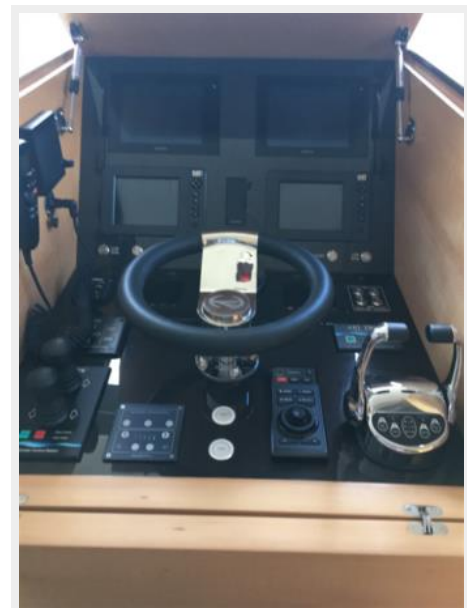
**Galley**



**Galley**



**Galley Lower Helm**



**Master Stateroom**



**Master Stateroom**



**Master Stateroom**



**Master Stateroom**



**Master Stateroom / 48" Swing Out TV**



**Master Stateroom**





**Master Head / Heated Granite Floor**



**Master Head**



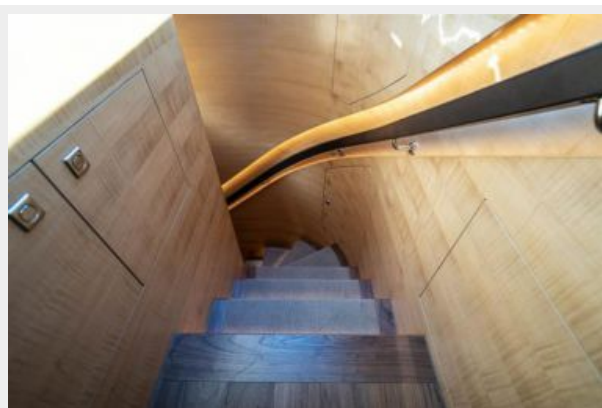
**Forward Owner / Guest Companionway**



**Forward Companionway Optional Laundry Center**



**Forward Staircase to Owners / Guests Quarters**



**Forward Staircase / Companionway**



**Port Guest Stateroom**



**Port Guest Starboard**



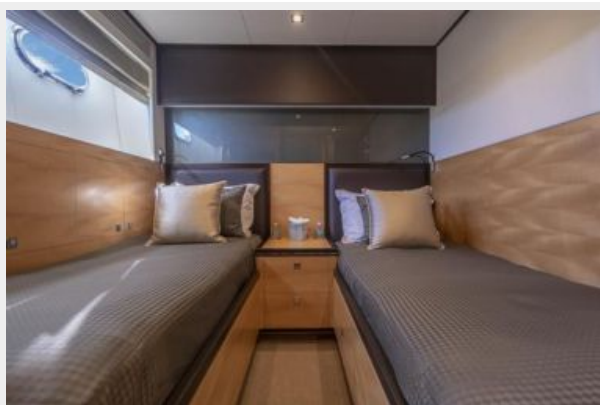
**Port Guest Stateroom**



**Port Guest Stateroom**



**Starboard Guest Stateroom**



**Starboard Guest Stateroom**



**Port Guest Stateroom Head**



**Starboard Guest Stateroom Head**



**Forward VIP Guest Stateroom**



**Forward VIP Guest Stateroom**



**VIP Stateroom**



**VIP Stateroom**



**Forward VIP Stateroom Guest Head**



**Crew Galley**



**Crew Galley**



**Crew Galley**



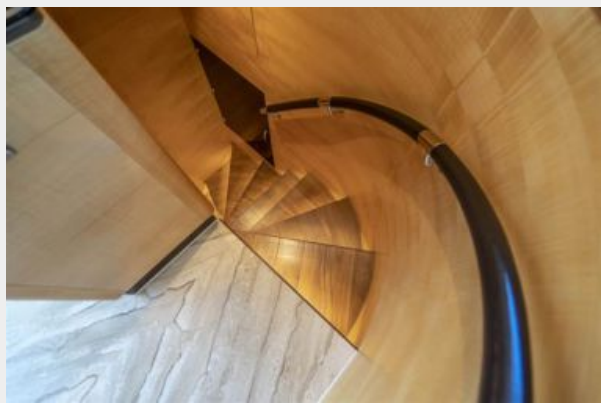
**Crew Galley**



**Crew Galley**



**Crew Stairwell from Main Salon**



**Aft Crew Quarters Stairwell**



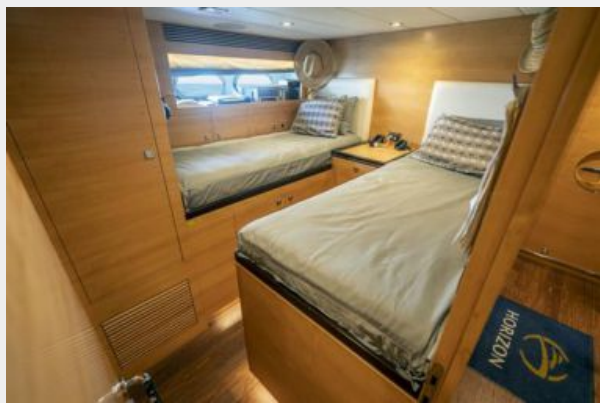
**Crew Washer / Dryer**



**Crew Quarters Companionway / Engine Room Access Door**



**Captains Cabin**



**Captains Head**



**Captains Ensuite Head**



**Crew Cabin**



**Crew Cabin**



**Crew Cabin Ensuite Head**



**Crew Cabin Ensuite Head**



**Engine Room Forward**



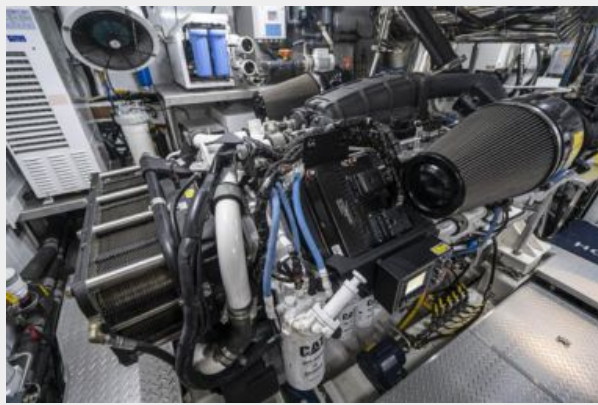
**Engine Room Aft**



**CAT Engine Monitor**



**Starboard Main Engine**



**Port Main Engine**



**Engine Room**



**Transom / Passerelle**



**Transom**



**TNT Hydraulic Swim Platform**





### Transom Crew Access Door



### Cruising 19 Knots

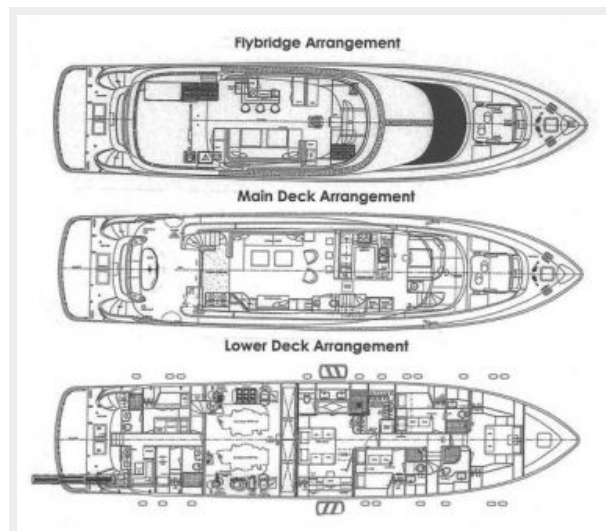


### DSC04631

### Cruising 19 Knots



### LAYOUT



# КОНТАКТЫ

---

Андрей Шестаков (Andrey Shestakov) – ведущий яхтенный брокер отдела продаж яхт и судов компании Shestakov Yacht Sales Inc. Официальный представитель Shestakov Yacht Sales Inc. для русскоговорящих клиентов в центральном офисе компании в Майами/Форт Лодердейл/Флорида/США.

## Контактная информация

---

Email: [andrey@shestakovyachtsales.com](mailto:andrey@shestakovyachtsales.com)

Web: [shestakovyachtsales.com](http://shestakovyachtsales.com)

## Телефоны

---

Краснодарский край: **+7(918)465-66-44**

США, Майами, Флорида: **+1(954)274-4435**

## Время работы

---

Понедельник – Суббота: **9:00 - 21:00**  
EDT

Воскресенье: **Закрето**

## Адрес

---



Harbour Towne Marina, 850 NE 3rd St,  
STE 213, Dania, FL 33004