

40FT 2007 DORAL MEDITERRA — DORAL



Builder: DORAL

Year Built: 2007

Model: Cruising Yacht

Price: PRICE ON APPLICATION

Location: United States

LOA: 40' (12.19mm)

Beam: 13.25

Max Draft: 3' 8" (1.12mm)

Cruise Speed: 30 Knots Kts. (35 MPH)

Max Speed: 40 Knots Kts. (46 MPH)

Our experienced yacht broker, Andrey Shestakov, will help you choose and buy a yacht that best suits your needs 40ft 2007 Doral Mediterra — DORAL from our catalogue. Presently, at Shestakov Yacht Sales Inc., we have a wide variety of yachts available on our sale's list. We also work in close contact with all the big yacht manufacturers from all over the world.

If you would like to buy a yacht 40ft 2007 Doral Mediterra — DORAL or would like help answering any questions concerning purchasing, selling or chartering a yacht, please call +1(954)274-4435

TABLE OF CONTENTS

TABLE OF CONTENTS	2
SPECIFICATIONS	3
Overview	3
Basic Information	3
Dimensions	3
Speed, Capacities and Weight	4
Accommodations	4
Hull and Deck Information	4
Engine Information	4
PHOTOS	5
CONTACTS	14
Contact details	14
Telephones	14
Office hours	14
Address	14

SPECIFICATIONS

Overview

Roomy and robust 40' Doral Mediterra with gorgeous Silver hull side paint. Excellent access fore and aft with a walk-through windshield and double centerline transom door. Social seating in the cockpit is accented with a grill and sink. Down in the cabin, you are greeted with gorgeous cherry wood and teak and holly floors accented with deep pile carpeting. The galley is fully equipped to port, with Master forward and a Guest stateroom aft, both with ensuite heads.

Manufacturer's Overview:

The Doral Mediterra 40 is powered by Volvo Penta IPS500 pods. As verified by Boat Test, her cruising sweet spot is 30 mph, consuming an efficient 1.25 mpg, and topping out at 40 mph. Around the docks, the joy stick makes for no-fuss maneuvering. Her deep V hull and lower center of gravity make her an exceptional blue water yacht.

This is no high-production sports cruiser. Doral's attention to detail, quality engineering, and craftsmanship are best in class.

There are two staterooms and two heads, and the benefits of design elements that any cruising owners would appreciate. For example, the one level cockpit and helm sole make for a much safer, comfortable, and congenial space.

Basic Information

Category: Cruising Yacht

Sub Category: Express

Model Year: 2007

Year Built: 2007

Country: United States

Dimensions

LOA: 40' (12.19mm)

Beam: 13.25

Max Draft: 3' 8" (1.12mm)

Speed, Capacities and Weight

Cruise Speed: 30 Knots Kts. (35 MPH)

Max Speed: 40 Knots Kts. (46 MPH)

Water Capacity: 80 Gallons

Holding Tank: 33 Gal Gallons

Fuel Capacity: 294 Gal Gallons

Accommodations

Total Cabins: 2

Total Berths: 2

Total Heads: 2

Hull and Deck Information

Hull Material: Fiberglass

Hull Configuration: Modified Deep Vee

Engine Information

Engines: 2

Manufacturer: Volvo Penta

Engine Type: Inboard

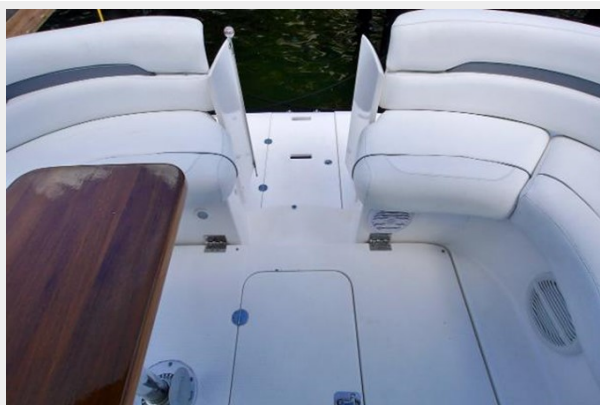
Fuel Type: Diesel

PHOTOS





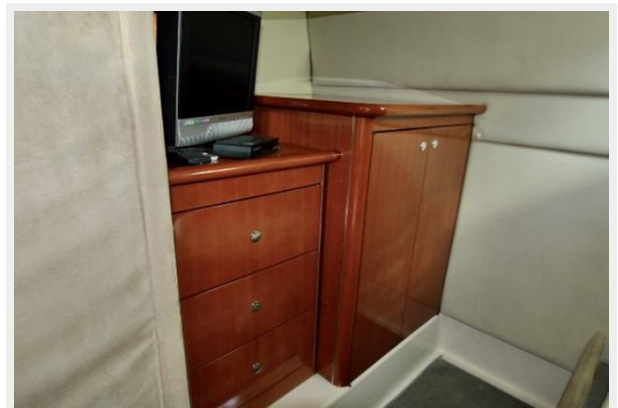
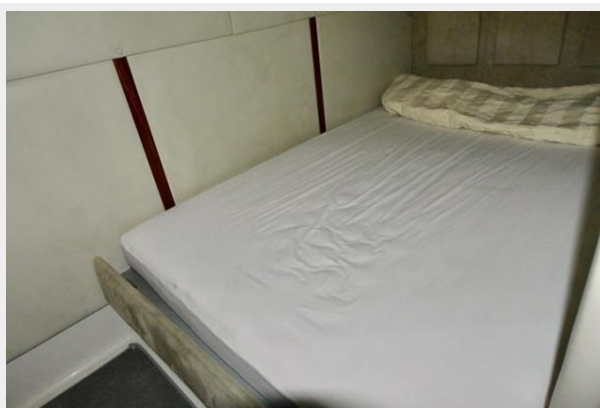
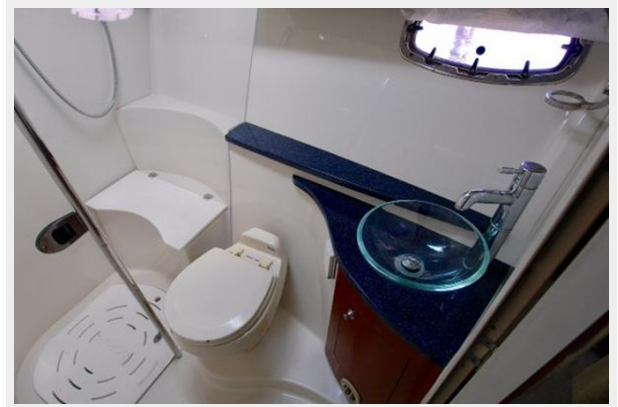














CONTACTS

Andrey Shestakov, leading yacht broker of the sales department of Shestakov Yacht Sales Inc. Shestakov Yacht Sales Inc., the official representative of the Miami/Fort Lauderdale FL headquarters.

Contact details

Email: andrey@shestakovyachtsales.com

Web: shestakovyachtsales.com/en/

Telephones

USA: +1(954)274-4435

Office hours

Monday – Saturday: **9:00 - 21:00** EDT

Sunday: **closed**

Address



Harbour Towne Marina, 850 NE 3rd St,
STE 213, Dania, FL 33004